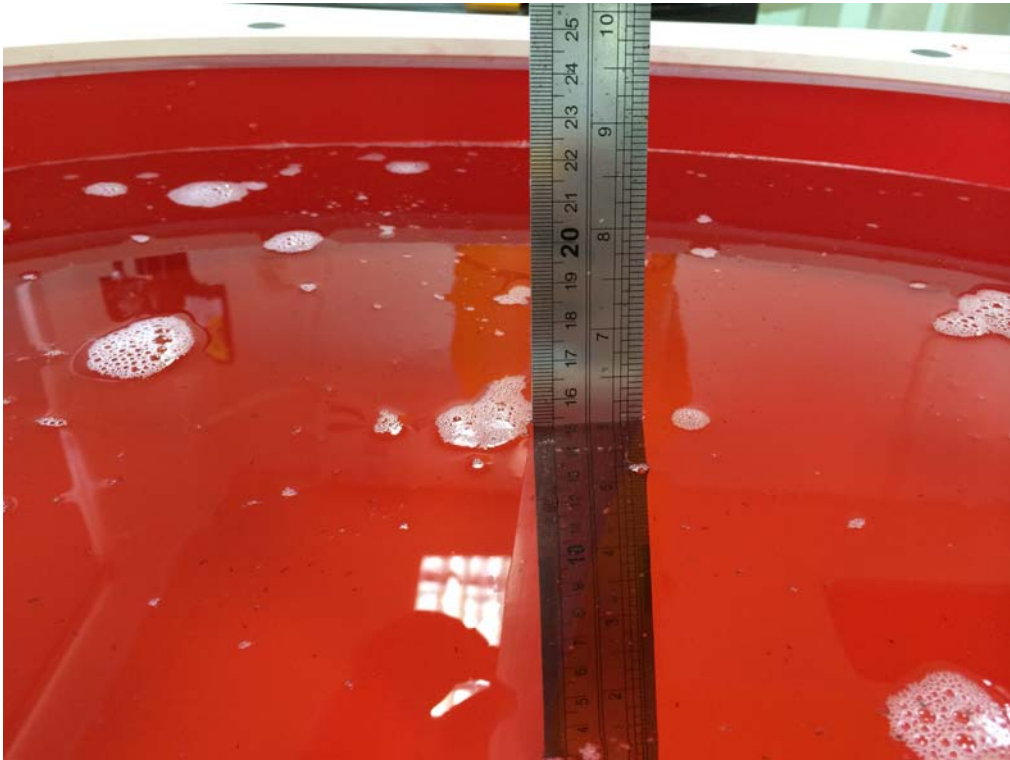
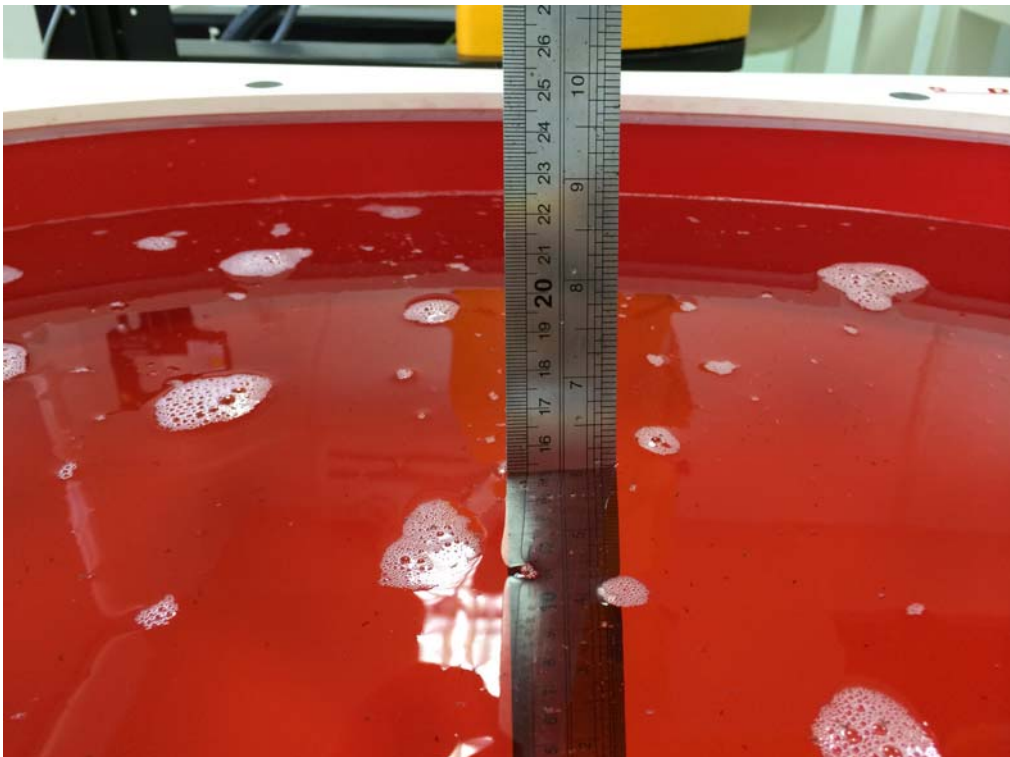


## Test Setup Photos of The EUT



Photograph of the depth in the Head Phantom (450MHz)



Photograph of the depth in the Body Phantom (450MHz)



**Face-held, the front of the EUT towards phantom (The distance was 25mm)**



**Body-worn, the front of the EUT towards ground with A1, B2, BC2 and C1  
(The distance was 0mm)**