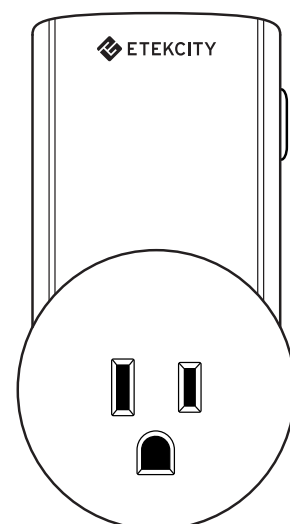
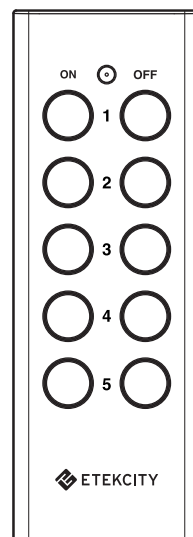




## ZAP Remote

Model Nos.: ZAP 1L-Tx

ZAP 1L-Rx



### Questions or Concerns?

(855) 686-3835

[support@etekcity.com](mailto:support@etekcity.com)

Thank You.

Thank you for purchasing the **Remote Outlet** by Etekcity. We are dedicated to providing our customers with quality products for building on better living. Should you have any questions or concerns about using your new product, feel free to reach out to our helpful Customer Support Team at **support@etekcity.com**. We hope you enjoy your new product!



## Table of Contents

Safety Information	4
Function Diagram	6
Operation	8
Reprogramming an Outlet	10
Resetting an Outlet	12
Troubleshooting	14
Specifications	15
Package Contents	15
Warranty Information	16
Customer Support	21



## Safety Information

**IMPORTANT:** Please read, understand, and comply with all of the instructions provided in this manual before using this device. Failure to comply with the instructions given in this manual and/or using the device in ways other than the ones mentioned herein may result in physical harm and/or damage to the device.

### Important Safety Information

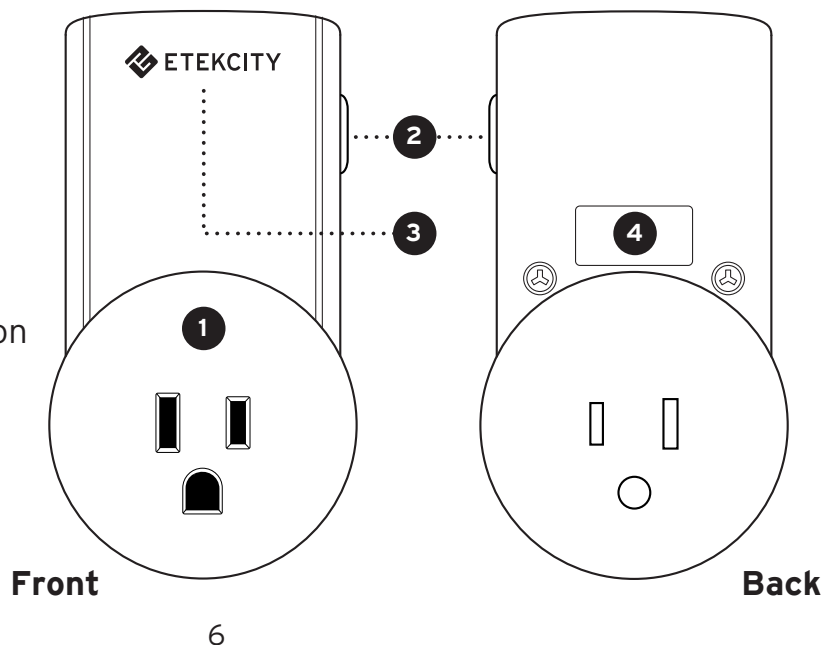
- The wireless range may be limited by other electronic devices, appliances, walls, or other physical barriers.
- The outlets are intended for indoor use only.
- Avoid exposure to high-temperature sources, direct sunlight, or moisture.
- **Do not** exceed the maximum load current of 10A (~1200W).

- **Do not** use appliances such as refrigerators, air conditioning units, and washing machines with the outlets. Such appliances exceed the maximum load current of 10A (~1200W).
- Keep out of reach of children.
- The outlets are best used in areas with proper air circulation.
- When cleaning, use a dry cloth to wipe the outlet and remote surfaces.
- For your safety, make sure the batteries within the remotes are correctly installed before use.
- **Do not** dispose of any part of this product in a fire.
- The remote is not compatible with rechargeable batteries.
- This device is not intended for use in areas with high humidity, such as bathrooms.
- For best performance, regularly change the batteries in the remote controls.
- If the remote is not in use for an extended period of time, remove batteries.
- These outlets are not compatible with the ZAP 3VX remote outlets.

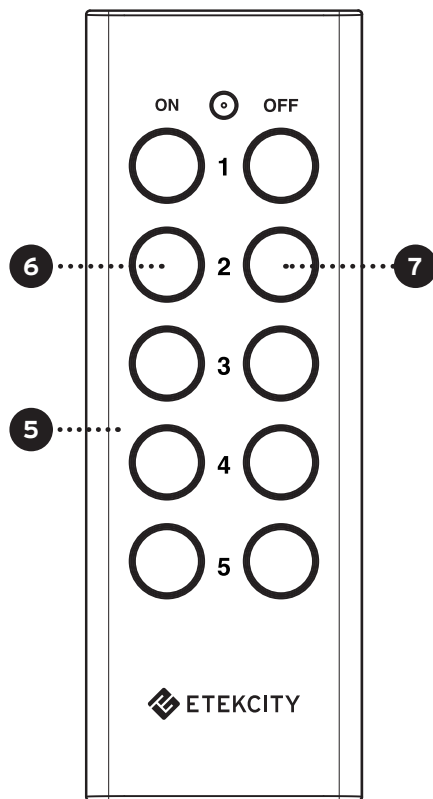


## Function Diagram

1. Outlet
2. Power/Program Button
3. Outlet Indicator Light
4. Outlet Number



- 5. Remote
- 6. ON Buttons
- 7. OFF Buttons

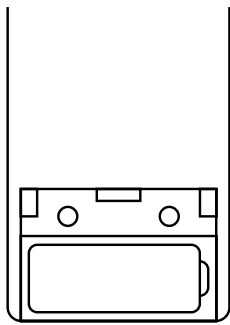




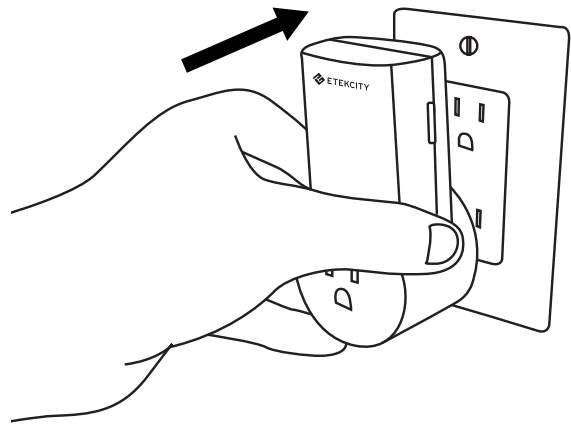
## Operation

The outlets are pre-programmed for immediate use, but the configuration can be customized to meet your needs.

1. Install one 12V (23A) battery in each remote control.

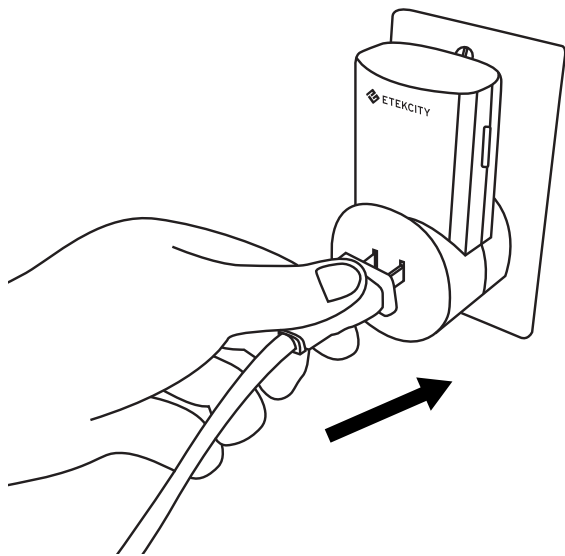


2. Plug each outlet into a powered socket.

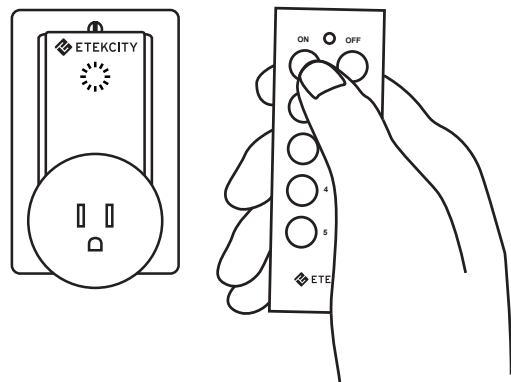




3. Plug an appliance into each outlet. Make sure the appliance is switched to **ON** in order to allow the outlet to control the device.

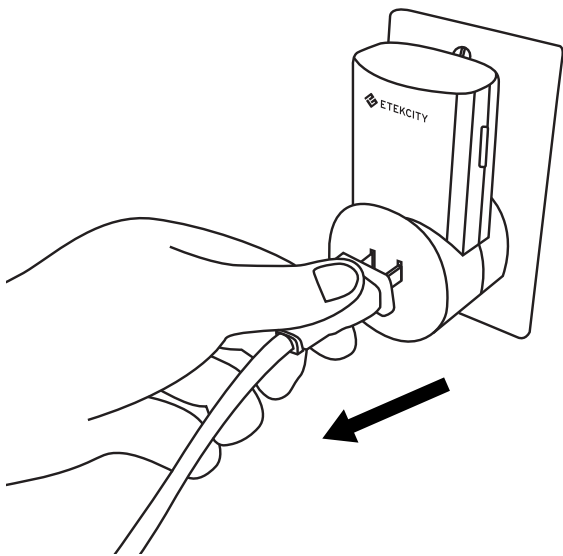


4. Press the **ON** or **OFF** buttons for the corresponding outlet number on the remote. The indicator light on the corresponding outlet will turn on or turn off, confirming that the outlet is now in use.

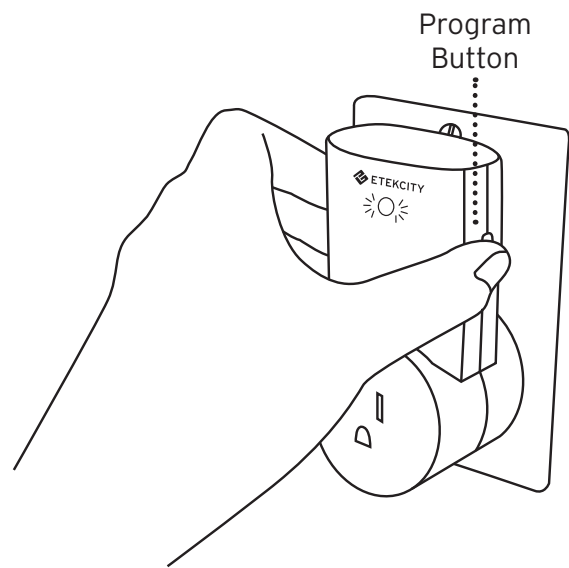


## Reprogramming an Outlet

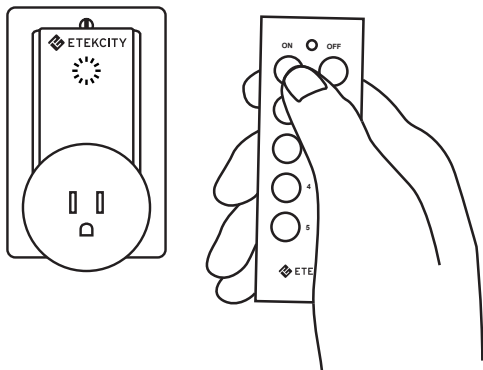
1. Unplug device from outlet.



2. Press and hold program button until indicator light starts to blink.

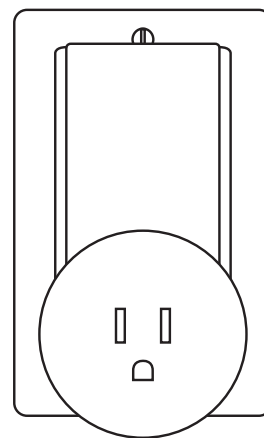


3. Release program button, press the **ON** or **OFF** button for the desired number on the remote.



4. Pairing is successful when indicator light stops blinking.

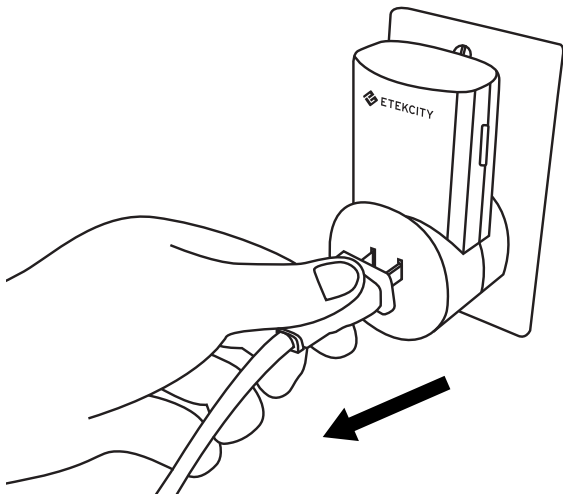
**NOTE:** You may repeat the reprogramming steps to assign up to 10 outlets to a single number to simultaneously control multiple devices with a single click.



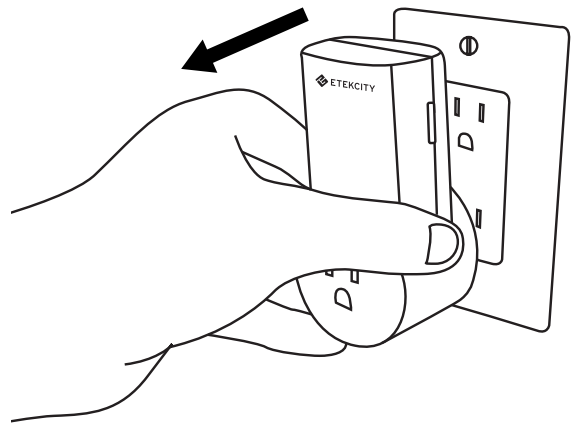
## Resetting an Outlet

To remove an outlet from all remote control pairings:

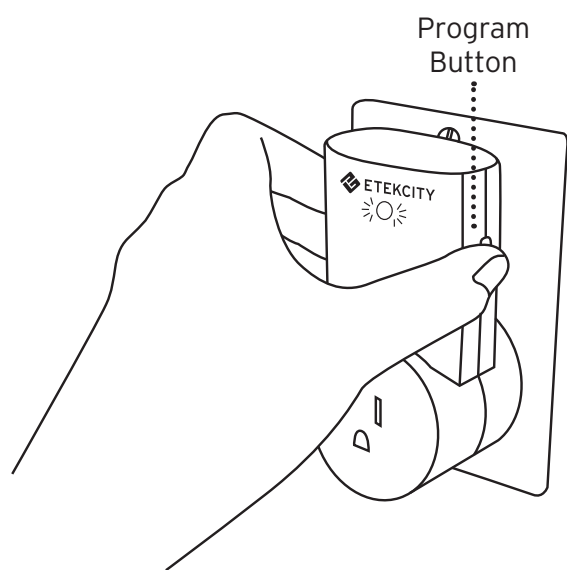
1. Unplug any devices connected to the remote outlet.



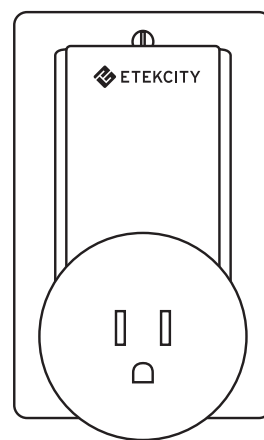
2. Remove the outlet from the power socket.



3. Press and hold the program button.
4. Plug outlet back into power socket while continuing to hold program button.



5. Hold program button for approximately 5 seconds until LED indicator begins to flash.
6. Program reset will be complete when indicator light stops blinking.





## Troubleshooting

Issue	Solution
Outlet is unresponsive to remote commands.	Replace the remote batteries with new 12V (23A) batteries. Low battery power may decrease readable wireless remote range.
	Make sure the outlet and device are properly connected and powered on.
	Make sure that the outlet is placed in an area with proper air circulation to avoid overheating.
	Make sure the maximum load current of 10A (~1200W) isn't being exceeded. If so, unplug the device from the outlet immediately.
	If the outlet is still unresponsive, refer to the <b>Resetting</b> (page 12) and <b>Reprogramming</b> (page 10) sections in the manual.



## Specifications

<b>Voltage:</b>	120V~60 Hz
<b>Maximum Current:</b>	10A
<b>Maximum Power:</b>	1200W
<b>Transmission Frequency:</b>	433.92 MHz
<b>Remote Battery Power:</b>	12V (23A)
<b>Remote Control Range:</b>	100 ft (30 m)*
<b>Operating Temperature:</b>	32°~95°F (0°~35°C)
<b>Storage Temperature:</b>	-4°~167°F (-4°~75°C)

**\*NOTE:** The wireless range may be shortened by other electronic devices, appliances, walls, and other physical barriers.

## Package Contents

### ZAP 1L-Rx

1 x Remote Outlet  
1 x User Manual

### ZAP 1L-Tx

1 x Remote Control  
1 x 12V (23A) Battery  
1 x User Manual



## Warranty Information

<b>Product Name</b>	ZAP Remote
<b>Model Number</b>	ZAP 1L-Rx ZAP 1L-Tx
<b>Default Warranty Period</b>	1 year
<i>For your own reference, we strongly recommend that you record your order number and date of purchase.</i>	
<b>Order Number:</b>	
<b>Date of Purchase:</b>	

### TERMS & POLICY

Etekcitec warrants all products to be of the highest quality in material, craftsmanship, and service effective from the date of purchase to the end of the warranty period.

Etekcitec will replace any product found to be defective due to manufacturer flaws based on eligibility. Refunds are available within the first 30 days of purchase. Refunds are only available to the original purchaser of the product. This warranty extends only to personal use and does not extend to any product that has been used for commercial, rental, or any other use in which the product is not intended for. There are no warranties other than the warranties expressly set forth with each product.



This warranty is non-transferrable. Etekcity is not responsible in any way for any damages, losses, or inconveniences caused by equipment failure by user negligence, abuse, or use noncompliant with the user manual or any additional safety, use, or warnings included in the product packaging and manual.

**This warranty does not apply to the following:**

- Damage due to abuse, accident, alteration, misuse, tampering, or vandalism.
- Improper or inadequate maintenance. Damage in return transit.
- Unsupervised use by children under 18 years of age.

Etekcity and its subsidiaries assume no liability for damage caused by the use of the product other than for its intended use or as instructed in the user manual. Some

states do not allow this exclusion or limitation of incidental or consequential losses so the foregoing disclaimer may not apply to you. This warranty gives you specific legal rights and you may also have other rights which may vary from state to state.

**ALL EXPRESSED AND IMPLIED WARRANTIES, INCLUDING THE WARRANTY OF MERCHANTABILITY, ARE LIMITED TO THE PERIOD OF THE LIMITED WARRANTY.**

**Additional 1-Year Warranty**

You can extend your 1-year warranty by an additional year. Log onto **[www.etekcity.com/warranty](http://www.etekcity.com/warranty)** and enter your order number (e.g., from Amazon or Houzz) within the first 14 days of your purchase to register your new product for the extended warranty.

If you are unable to provide the order number for your product, please type a short note in the order number field along with the date you received your product.

#### **Defective Products & Returns**

Should your product prove defective within the specified warranty period, please contact Customer Support via **support@etekcity.com** with your invoice and order number. **DO NOT** dispose of your product before contacting us. Once our Customer Support Team has approved your request, please return the unit with a copy of your invoice and order number.

## FCC statement to the user

This device complies with Part 15 of the FCC Rules. Operation is subject to the following two conditions:

- (1) This device may not cause harmful interference, and
- (2) This device must accept any interference received, including interference that may cause undesired operation.

Any changes or modifications not expressly approved by the party responsible for compliance could void the user's authority to operate this equipment.

This equipment has been tested and found to comply with the limits for a Class B digital device, pursuant to Part 15 of the FCC Rules. These limits are designed to provide reasonable protection against harmful interference in a residential installation. This equipment generates, uses and can radiate radio frequency energy and, if not installed and used in accordance with the instructions, may cause harmful interference to radio communications.

However, there is no guarantee that interference will not occur in a particular installation. If this equipment does cause harmful interference to radio or television reception, which can be determined by turning the equipment off

and on, the user is encouraged to try to correct the interference by one of the following measures:

- Reorient or relocate the receiving antenna.
- Connect the equipment into an outlet on a circuit different from that to which the receiver is connected.
- Increase the separation between the equipment and receiver.
- Consult the dealer or an experienced radio/TV technician for help.

## **FCC radiation exposure statement**

This equipment complies with FCC radiation exposure limits set forth for an uncontrolled environment. End users must follow the specific operating instructions for satisfying RF exposure compliance. To maintain compliance with FCC RF exposure compliance requirements, please follow operation instructions as documented in this manual. This transmitter must not be co-located or operating in conjunction with any other antenna or transmitter. This equipment should be installed and operated with a minimum distance of 20cm between the radiator and your body. The availability of some specific channels and/or operational frequency bands are country dependent and are firmware programmed at the factory to match the intended destination. The firmware setting is not accessible by the end user.



## Customer Support

Should you encounter any issues or have any questions regarding your new product, feel free to contact our helpful Customer Support Team. Your satisfaction is ours!

### **CUSTOMER SUPPORT**

Etekcite Corporation  
1202 N. Miller St., Suite A  
Anaheim, CA 92806

**Email:** [support@etekcity.com](mailto:support@etekcity.com)

**Local:** (657) 500-1872

**Toll-Free:** (855) 686-3835

### **SUPPORT HOURS**

Monday - Friday

9:00 am - 5:00pm PT

*\*Please have your order confirmation number ready before contacting customer support.*



**ETEKCITY<sup>®</sup>**

Building on better living.



Scan here and join the community!  
<http://www.etekcity.com>