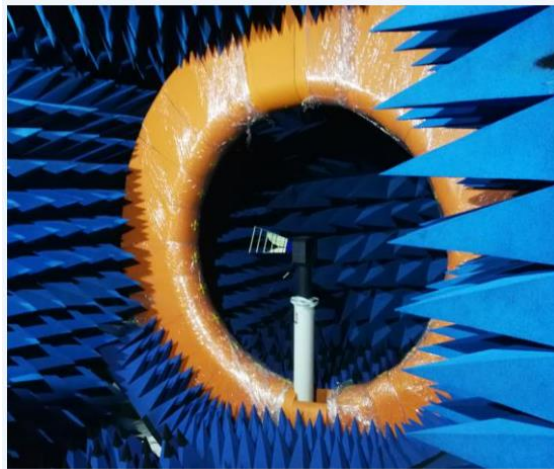


## 1. Product Application

Terminal of the antenna products can only be used for BT antenna.

## 2. The test equipment



A 24-probe microwave chamber



R&S CMW500



Agilent E5515C



Agilent Technologies E5071B

## 3. BT Antenna description

### 3.1 BT Technology Parameters

Manufacture: Jiangxi Xinmanda Circuit Co., Ltd

Address: Building B1, Block D11-1-B, Jizhou District industrial park, Ji'an, Jiangxi province

Antenna Model: CF558BLE

BT antenna type: PCB antenna

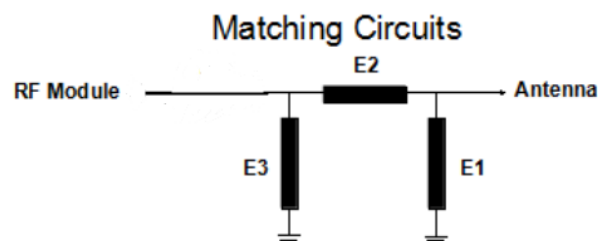
BT Frequency Range: 2400MHz-2500MHz

Maximum antenna gain: 0.22dbi @ 2490MHz

Operating Humidity: 85% R.H.MAX

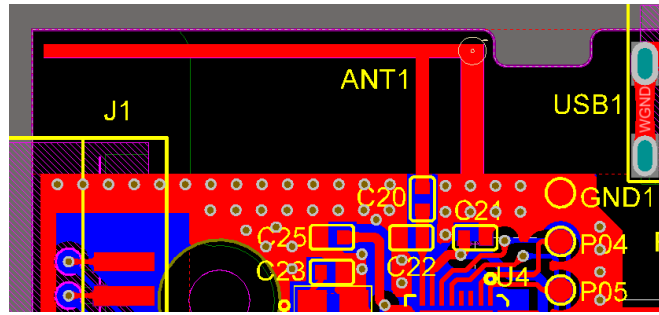
Temperature Rating: 5°C~+40°C

### 3.2 BT matching circuit

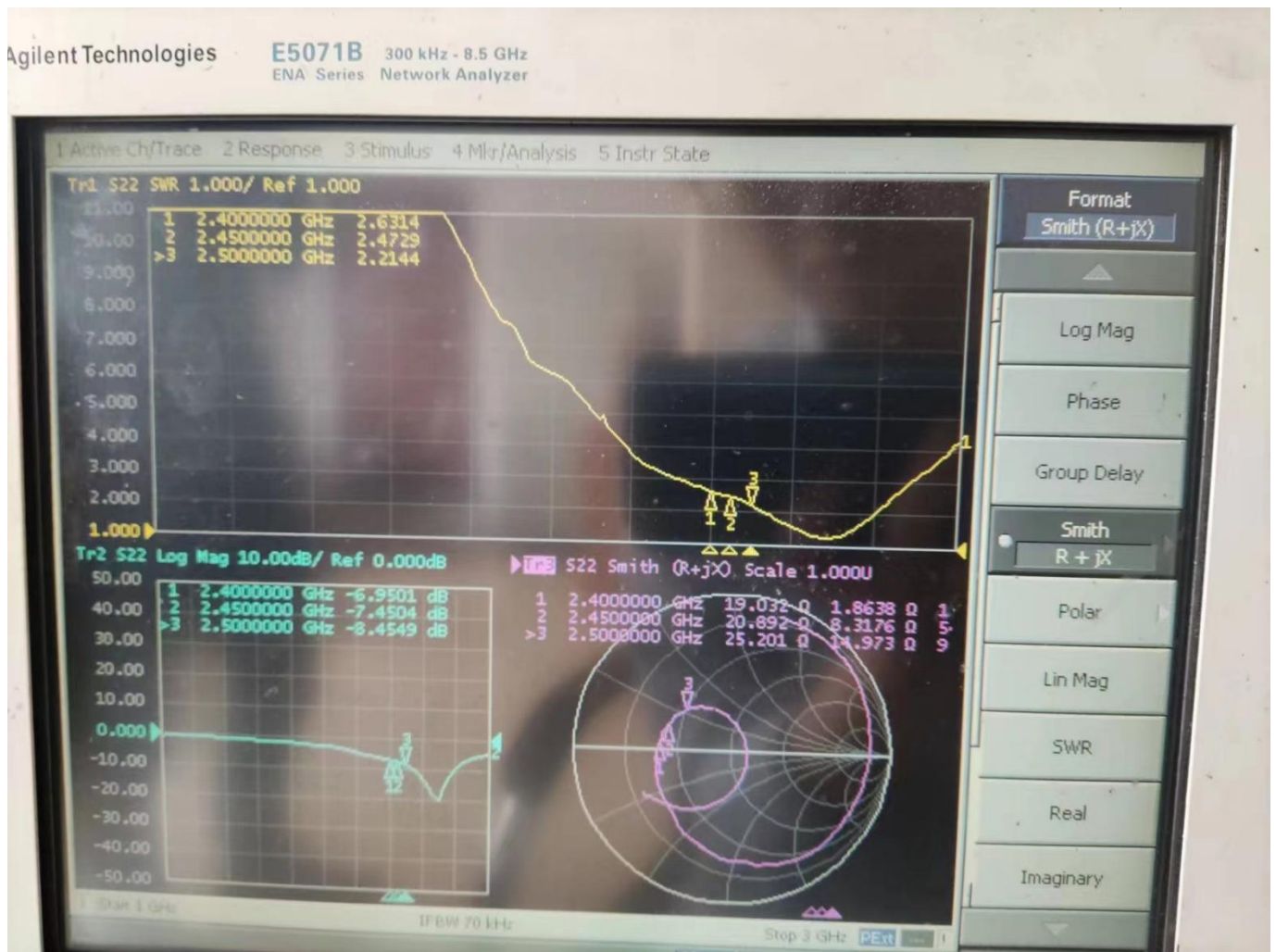


Element	Value
E1(0402)	2.2uF
E2(0402)	12PF
E3(0402)	1PF

### 3.3 BT antenna position



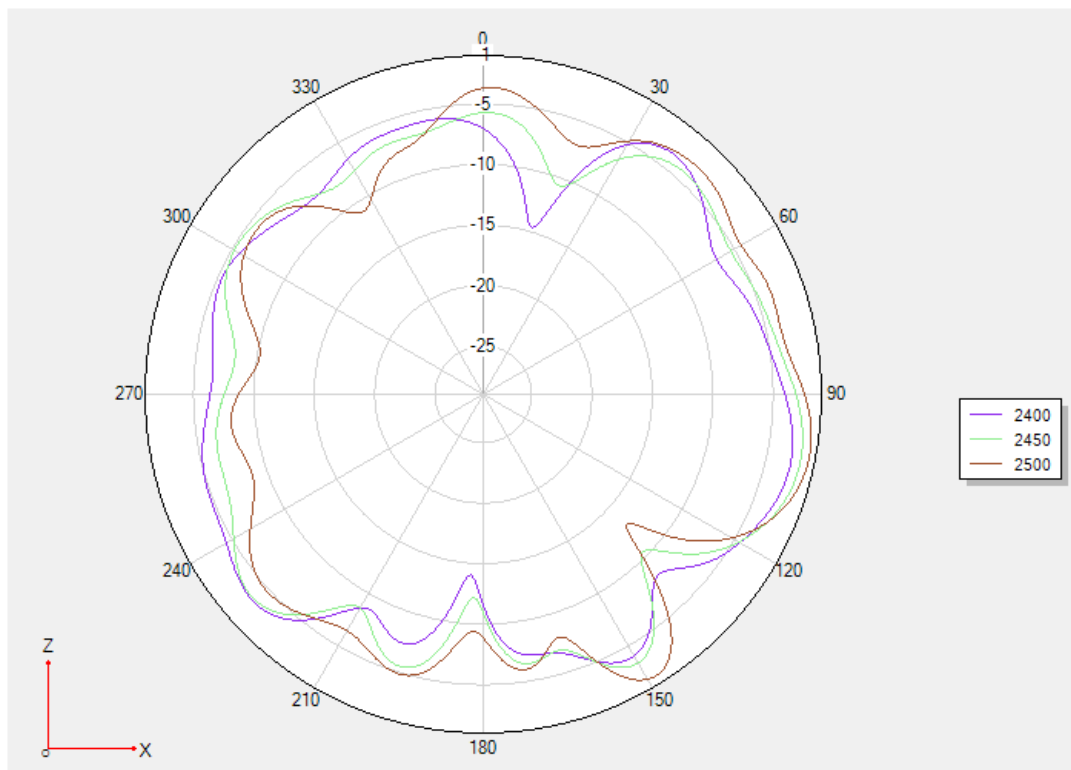
### 3.4 BT VSWR/Return Loss/Smith:



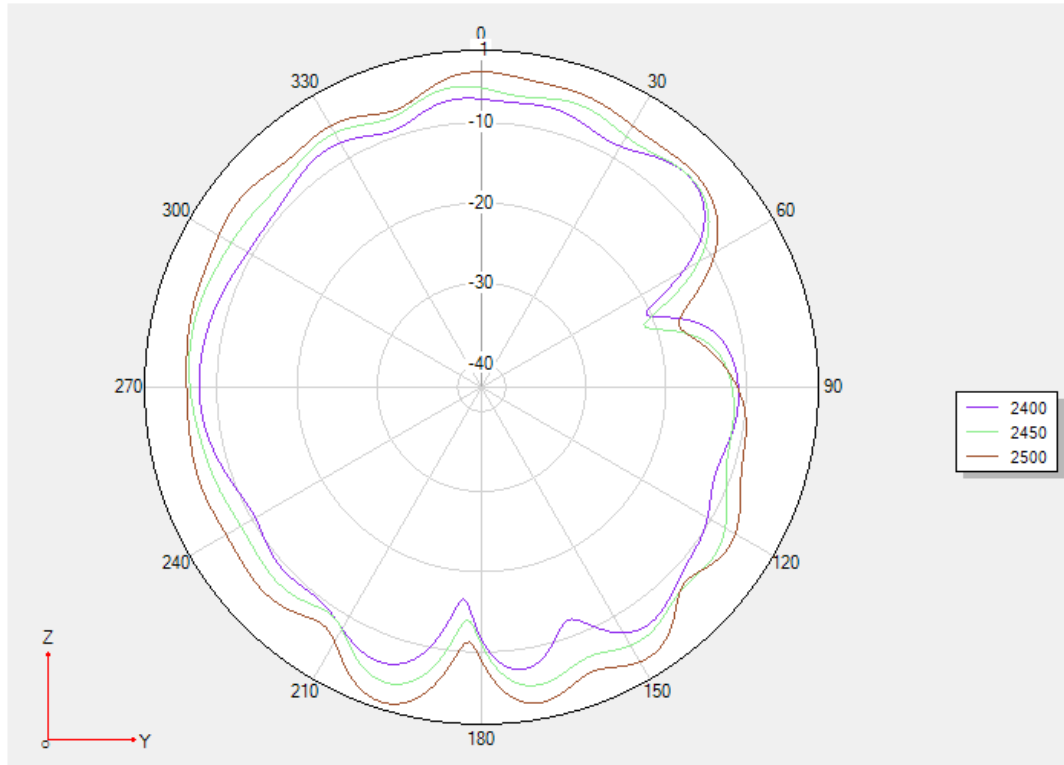
### 3.5 BT Efficiency And Gain:

Frequency/Mhz	Efficiency / %	MaxGain/dBi
2400	15.14	-1.9
2410	14.79	-1.79
2420	15.52	-1.44
2430	15.92	-1.49
2440	15.81	-1.46
2450	16.37	-0.94
2460	16.52	-0.67
2470	16.18	-0.66
2480	16.98	-0.29
2490	17.82	0.22
2500	17.34	-0.05

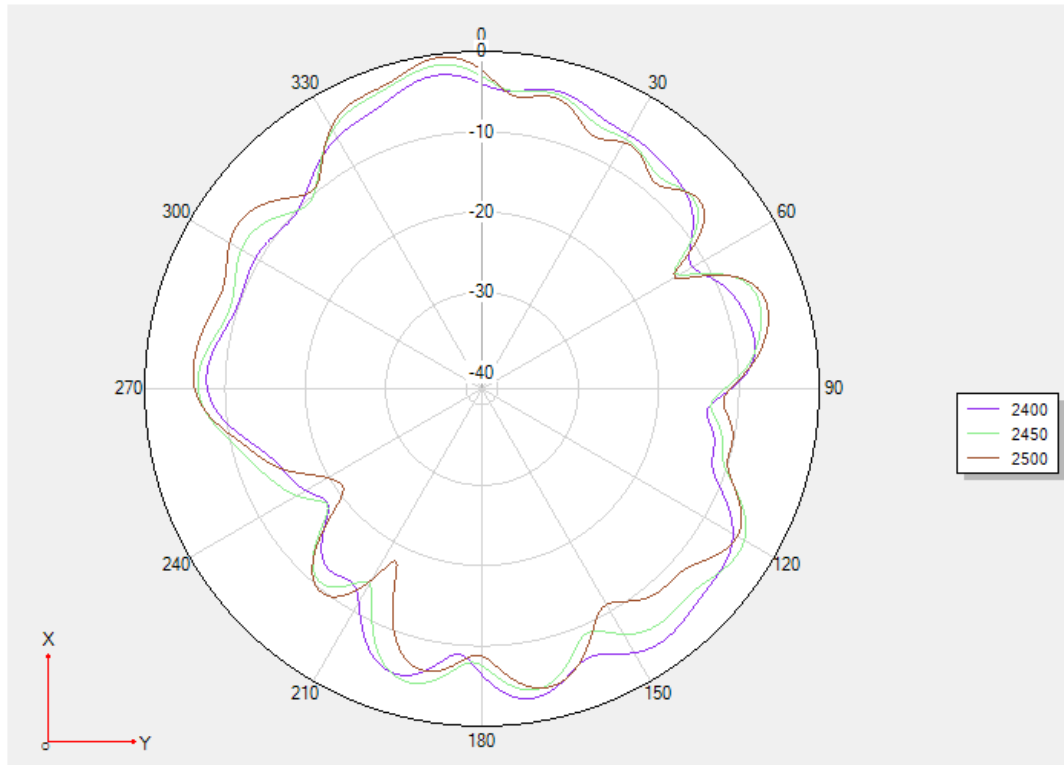
### 3.6. BT 2D Pattern Phi0°



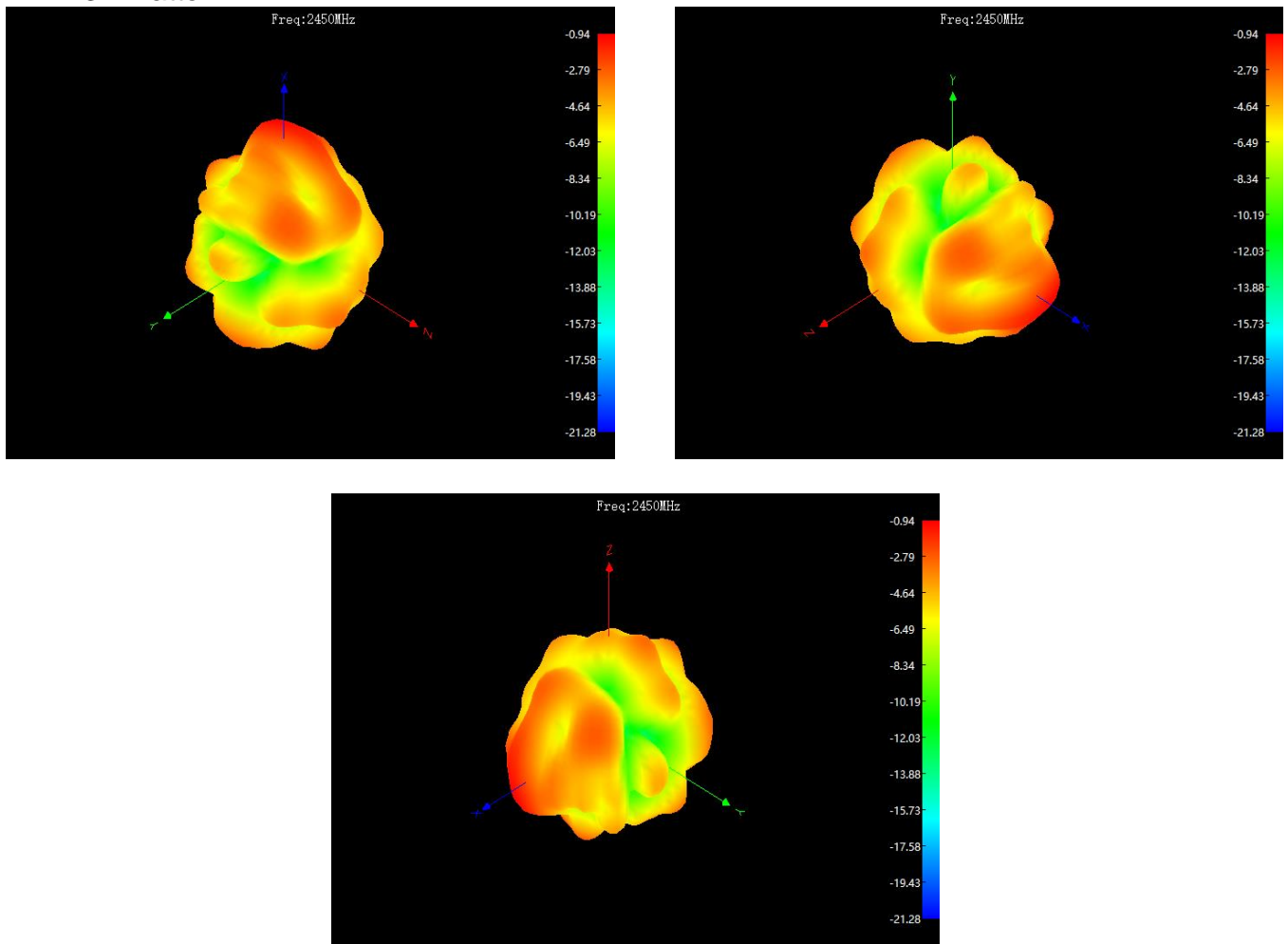
### Phi90°



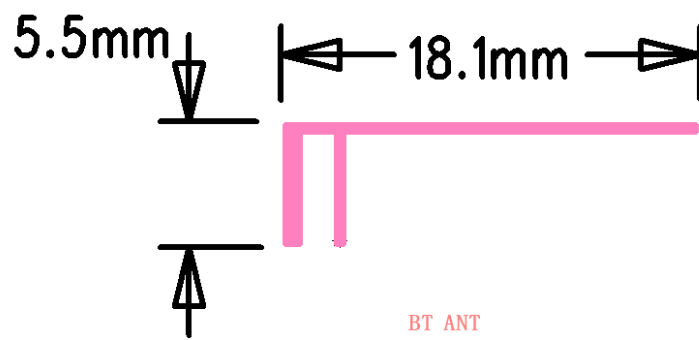
### Theta90°



### 3.7. BT 3D Pattern



### 3.7 BT Engineering drawings:



PCB on-board antenna

