



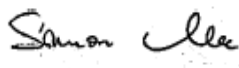

SAR EVALUATION REPORT

For

Shanghai Howay GIS Co., Ltd

Room 230, Focus building, Chunshe Road, Minhang Distract, Shanghai ,China

FCC ID: 2AAZDS1XN2015

Report Type: Original Report	Product Type: Handheld GPS/GIS Data Collector
Prepared By: <u>Simon Ma</u>	
Report Number: <u>RKS150703001-022</u>	
Report Date: <u>2015-07-22</u>	
Reviewed By: <u>Bo Li</u>	
Bay Area Compliance Laboratories Corp. 1274 Anvilwood Avenue, Sunnyvale, CA 94089, USA Tel: (408) 732-9162 Fax: (408) 732 9164	

Note: This test report is prepared for the customer shown above and for the device described herein. It may not be duplicated or used in part without prior written consent from Bay Area Compliance Laboratories Corp. This report must not be used by the customer to claim product certification, approval, or endorsement by A2LA* or any agency of the Federal Government. * This report may contain data that are not covered by the A2LA accreditation and are marked with an asterisk “*” (Rev.3)

Summary of Test Results			
Rule Part(s):	FCC §2.1093		
Test Procedure(s):	IEEE 1528: 2013, KDB 447498 KDB 865664, KDB 941225		
Device Category: Exposure Category:	Portable Device General Population/Uncontrolled Exposure		
Device Type:	Portable Device		
Modulation Type:	GMSK, CCK, OFDM, FHSS		
TX Frequency Range:	GSM850: 824-849 MHz GSM1900: 1850-1910 MHz Bluetooth: 2402-2480 MHz, 802.11b/g: 2412-2462 MHz		
Maximum average Conducted Power*:	GSM850: 22.77 dBm GSM1900: 20.27dBm Bluetooth: 0.435dBm 802.11b/g: 8.51dBm		
Antenna Type(s) Tested:	Internal Antennas		
Body-Worn Accessories:	None		
Face-Head Accessories:	None		
Battery Type (s) Tested:	Li-ion Battery: 3.7Vdc, 3000mAh,		
Max. SAR Level (s) Measured:	Level (W/Kg)	Position	Operational Band/Mode
	1-g SAR: 0.548	Head	GSM850
	10-g SAR: 0.526	Handheld	
	1-g SAR: 0.219	Head	GSM1900
	10-g SAR: 0.402	Handheld	
	1-g SAR: 0.895	Head	Simultaneous TX
	10-g SAR: 0.667	Handheld	

TABLE OF CONTENTS

1	GENERAL DESCRIPTION	6
1.1	PRODUCT DESCRIPTION FOR EQUIPMENT UNDER TEST (EUT)	6
1.2	EUT TECHNICAL SPECIFICATION	6
2	TEST FACILITY.....	7
3	REFERENCE, STANDARDS AND GUIDELINES	8
3.1	SAR LIMITS	9
4	EQUIPMENT LIST AND CALIBRATION.....	10
4.1	EQUIPMENT LIST & CALIBRATION INFO.....	10
5	EUT TEST STRATEGY AND METHODOLOGY.....	11
5.1	TEST POSITIONS FOR BODY-SUPPORTED DEVICE AND OTHER CONFIGURATIONS	11
5.2	CHEEK/TOUCH POSITION	12
5.3	EAR/TILT POSITION.....	12
5.4	TEST POSITIONS FOR BODY-WORN AND OTHER CONFIGURATIONS	13
5.5	SAR EVALUATION PROCEDURE.....	14
5.6	TEST METHODOLOGY	14
6	DASY4 SAR EVALUATION PROCEDURE	15
6.1	POWER REFERENCE MEASUREMENT	15
6.2	AREA SCAN.....	15
6.3	ZOOM SCAN	16
6.4	POWER DRIFT MEASUREMENT	16
6.5	Z-SCAN	16
7	DESCRIPTION OF TEST SYSTEM.....	17
7.1	TISSUE DIELECTRIC PARAMETERS	18
7.2	MEASUREMENT SYSTEM DIAGRAM	18
7.3	SYSTEM COMPONENTS.....	19
8	SAR MEASUREMENT SYSTEM VERIFICATION	27
8.1	SYSTEM ACCURACY VERIFICATION	27
8.2	SAR SYSTEM VERIFICATION SETUP AND PROCEDURE	27
8.3	LIQUID AND SYSTEM VALIDATION.....	28
9	SAR MEASUREMENT RESULTS	29
9.1	TEST ENVIRONMENTAL CONDITIONS	29
9.2	TEST RESULTS	29
10	SAR SIMULTANEOUS TRANSMISSION DESCRIPTION	31
11	APPENDIX A – MEASUREMENT UNCERTAINTY.....	36
12	APPENDIX B – PROBE CALIBRATION CERTIFICATES	38
13	APPENDIX C – DIPOLE CALIBRATION CERTIFICATES	49
14	APPENDIX D - TEST SYSTEM VERIFICATIONS SCANS	63
15	APPENDIX E – SAR PLOTS (SUMMARY OF THE HIGHEST SAR VALUES)	67
16	APPENDIX F– OUTPUT POWER MEASUREMENT	71
17	APPENDIX G – TEST SETUP PHOTOS	72

17.1	LEFT HEAD TOUCH	72
17.2	LEFT HEAD TILT	72
17.3	RIGHT HEAD TOUCH.....	73
17.4	RIGHT HEAD TILT	73
17.5	BACK SIDE TOUCH TO THE FLAT PHANTOM.....	74
17.6	LEFT SIDE TOUCH TO THE FLAT PHANTOM.....	74
17.7	RIGHT SIDE TOUCH TO THE FLAT PHANTOM.....	75
17.8	BOTTOM SIDE TOUCH TO THE FLAT PHANTOM.....	75
18	APPENDIX H – EUT PHOTOS.....	76
18.1	EUT – FRONT VIEW.....	76
18.2	EUT – BACK VIEW	76
18.3	EUT – LEFT EDGE VIEW.....	77
18.4	EUT – RIGHT EDGE VIEW.....	77
18.5	EUT – TOP EDGE VIEW	78
18.6	EUT – BOTTOM EDGE VIEW.....	78
18.7	EUT – OPEN CASE VIEW	79
19	APPENDIX I - INFORMATIVE REFERENCES.....	80

DOCUMENT REVISION HISTORY

Revision Number	Report Number	Description of Revision	Date of Revision
0	RKS150703001-022	Original Report	2015-07-22

1 General Description

1.1 Product Description for Equipment under Test (EUT)

This report has been prepared on behalf of Shanghai Howay GIS Co., Ltd and their product, FCC ID: 2AAZDS1XN2015, Model S10 or the EUT (Equipment under Test) as referred to in the rest of this report. The EUT is a handheld GPS/GIS Data Collector.

***Note:**

This series products model: S12, S16, S12B and S10, we select model: S10 to test, there is no electrical change has been made to the equipment, please refer to the product similarity letter.

1.2 EUT Technical Specification

Item	Description
Modulation	GMSK, CCK, OFDM, FHSS
Frequency Range	GSM850: 824-849 MHz GSM1900: 1850-1910 MHz Bluetooth: 2402-2480 MHz, 802.11b/g: 2412-2462 MHz
Maximum average Conducted Power Measured	GSM850: 22.77 dBm GSM1900: 20.27dBm Bluetooth: 0.435dBm 802.11b/g: 8.51dBm
Dimensions (L*W*H)	160 (L) x 95 mm (W) x 30 mm (H)
Power Source	Li-ion Battery: 3.8Vdc, 3000mAh,
Normal Operation	Held to ear and Handheld

2 Test Facility

Bay area compliance Laboratories Corp. (BACL) is:

1- An independent Commercial Test Laboratory accredited to **ISO 17025: 2005** by **A2LA**, in the fields of: Electromagnetic Compatibility & Telecommunications covering Emissions, Immunity, Radio, RF Exposure, Safety and Telecom. This includes NEBS (Network Equipment Building System), Wireless RF, Telecommunications Terminal Equipment (TTE); Network Equipment; Information Technology Equipment (ITE); Medical Electrical Equipment; Industrial, Commercial, and Medical Test Equipment; Professional Audio and Video Equipment; Electronic (Digital) Products; Industrial and Scientific Instruments; Cabled Distribution Systems and Energy Efficiency Lighting.

2- An ENERGY STAR Recognized Laboratory, for the LM80 Testing, a wide variety of Luminaires and Computers.

3- A NIST Designated Phase-I and Phase-II CAB including: ACMA (Australian Communication and Media Authority), BSMI (Bureau of Standards, Metrology and Inspection of Taiwan), IDA (Infocomm Development Authority of Singapore), IC (Industry Canada), Korea (Ministry of Communications Radio Research Laboratory), NCC (Formerly DGT; Directorate General of Telecommunication of Chinese Taipei) OFTA (Office of the Telecommunications Authority of Hong Kong), Vietnam, VCCI - Voluntary Control Council for Interference of Japan and a designated EU CAB (Conformity Assessment Body) (Notified Body) for the EMC and R&TTE Directives.

4- A Product Certification Body accredited to **ISO Guide 65:1996** by **A2LA** to certify:

1- Unlicensed, Licensed radio frequency devices and Telephone Terminal Equipment for the FCC. Scope A1, A2, A3, A4, B1, B2, B3, B4 & C.

2. Radio Standards Specifications (RSS) in the Category I Equipment Standards List and All Broadcasting Technical Standards (BETS) in Category I Equipment Standards List for Industry Canada.

3. Radio Communication Equipment for Singapore.

4. Radio Equipment Specifications, GMDSS Marine Radio Equipment Specifications, and Fixed Network Equipment Specifications for Hong Kong.

5. Japan MIC Telecommunication Business Law (A1, A2) and Radio Law (B1, B2 and B3).

6. Audio/Video, Battery Charging Systems, Computers, Displays, Enterprise Servers, Imaging Equipment, Set-Top Boxes, Telephony, Televisions, Ceiling Fans, CFLs (Including GU24s), Decorative Light Strings, Integral LED Lamps, Luminaires, Residential Ventilating Fans.

The test site used by BACL Corp. to collect radiated and conducted emissions measurement data is located at its facility in Sunnyvale, California, USA.

The test site at BACL Corp. has been fully described in reports submitted to the Federal Communication Commission (FCC) and Voluntary Control Council for Interference (VCCI). The details of these reports have been found to be in compliance with the requirements of Section 2.948 of the FCC Rules on February 11 and December 10, 1997, and Article 8 of the VCCI regulations on December 25, 1997. The test site also complies with the test methods and procedures set forth in CISPR 22:2008 §10.4 for measurements below 1 GHz and §10.6 for measurements above 1 GHz as well as ANSI C63.4-2009, ANSI C63.4-2009, TIA/EIA-603 & CISPR 24:2010.

The Federal Communications Commission and Voluntary Control Council for Interference have the reports on file and they are listed under FCC registration number: 90464 and VCCI Registration No.: A-0027. The test site has been approved by the FCC and VCCI for public use and is listed in the FCC Public Access Link (PAL) database.

Additionally, BACL Corp. is an American Association for Laboratory Accreditation (A2LA) accredited laboratory (Lab Code 3297-02). The current scope of accreditations can be found at

<http://www.a2la.org/scopepdf/3297-02.pdf?CFID=1132286&CFTOKEN=e42a3240dac3f6ba-6DE17DCB-1851-9E57-477422F667031258&jsessionid=8430d44f1f47cf2996124343c704b367816b>

3 Reference, Standards and Guidelines

FCC:

The Report and Order requires routine SAR evaluation prior to equipment authorization of portable transmitter devices, including portable telephones. For consumer products, the applicable limit is 1.6 mW/g as recommended by the ANSI/IEEE standard C95.1-1992 [6] for an uncontrolled environment (Paragraph 65). According to the Supplement C of OET Bulletin 65 "Evaluating Compliance with FCC Guide-lines for Human Exposure to Radio frequency Electromagnetic Fields", released on Jun 29, 2001 by the FCC, the device should be evaluated at maximum output power (radiated from the antenna) under "worst-case" conditions for normal or intended use, incorporating normal antenna operating positions, device peak performance frequencies and positions for maximum RF energy coupling.

This report describes the methodology and results of experiments performed on wireless data terminal. The objective was to determine if there is RF radiation and if radiation is found, what is the extent of radiation with respect to safety limits. SAR (Specific Absorption Rate) is the measure of RF exposure determined by the amount of RF energy absorbed by human body (or its parts) – to determine how the RF energy couples to the body or head which is a primary health concern for body worn devices. The limit below which the exposure to RF is considered safe by regulatory bodies in North America is 1.6 mW/g average over 1 gram of tissue mass.

CE:

The CE requires routine SAR evaluation prior to equipment authorization of portable transmitter devices, including portable telephones. For consumer products, the applicable limit is 2 mW/g as recommended by the EN50360 for an uncontrolled environment. According to the Standard, the device should be evaluated at maximum output power (radiated from the antenna) under "worst-case" conditions for normal or intended use, incorporating normal antenna operating positions, device peak performance frequencies and positions for maximum RF energy coupling.

This report describes the methodology and results of experiments performed on wireless data terminal. The objective was to determine if there is RF radiation and if radiation is found, what is the extent of radiation with respect to safety limits? SAR (Specific Absorption Rate) is the measure of RF exposure determined by the amount of RF energy absorbed by human body (or its parts) – to determine how the RF energy couples to the body or head which is a primary health concern for body worn devices. The limit below which the exposure to RF is considered safe by regulatory bodies in Europe is 2 mW/g average over 10 gram of tissue mass.

The test configurations were laid out on a specially designed test fixture to ensure the reproducibility of measurements. Each configuration was scanned for SAR. Analysis of each scan was carried out to characterize the above effects in the device.

3.1 SAR Limits

FCC Limit (1g Tissue)

EXPOSURE LIMITS	SAR (W/kg)	
	(General Population / Uncontrolled Exposure Environment)	(Occupational / Controlled Exposure Environment)
Spatial Average (averaged over the whole body)	0.08	0.4
Spatial Peak (averaged over any 1 g of tissue)	1.60	8.0
Spatial Peak (hands/wrists/feet/ankles averaged over 10 g)	4.0	20.0

CE Limit (10g Tissue)

EXPOSURE LIMITS	SAR (W/kg)	
	(General Population / Uncontrolled Exposure Environment)	(Occupational / Controlled Exposure Environment)
Spatial Average (averaged over the whole body)	0.08	0.4
Spatial Peak (averaged over any 10 g of tissue)	2.0	10
Spatial Peak (hands/wrists/feet/ankles averaged over 10 g)	4.0	20.0

Population/Uncontrolled Environments are defined as locations where there is the exposure of individual who have no knowledge or control of their exposure.

Occupational/Controlled Environments are defined as locations where there is exposure that may be incurred by people who are aware of the potential for exposure (i.e. as a result of employment or occupation).

General Population/Uncontrolled environments Spatial Peak limit 1.6 W/kg (FCC) & 2 W/kg (CE) applied to the EUT.

4 Equipment List and Calibration

4.1 Equipment List & Calibration Info

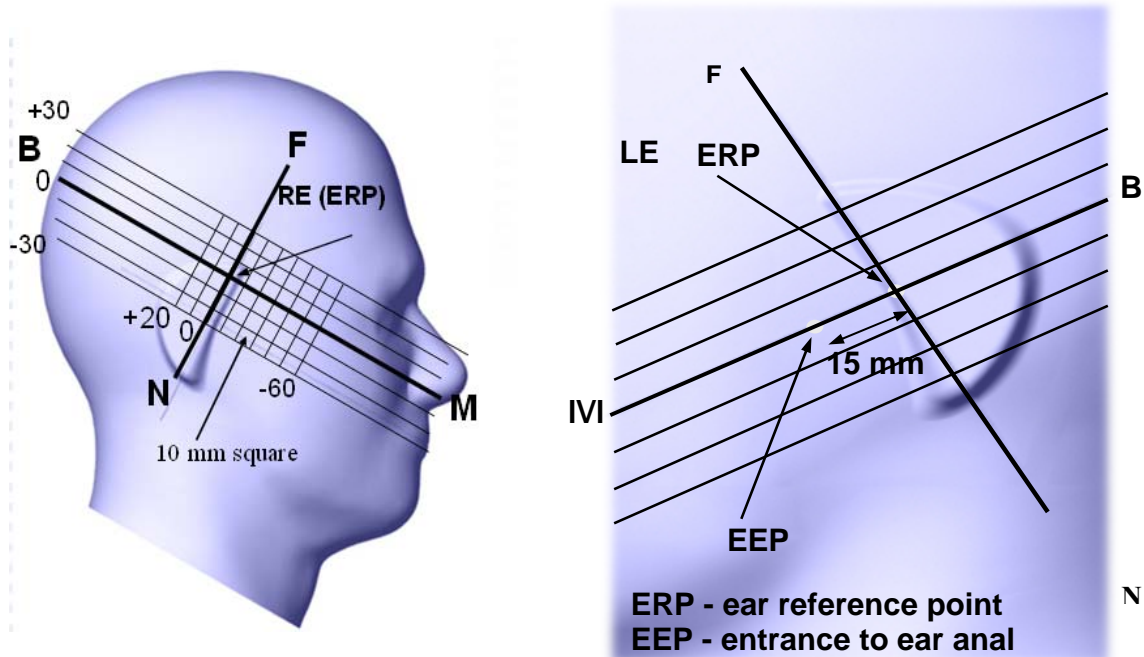
Type/Model	Cal. Due Date	S/N
DASY4 Professional Dosimetric System	N/A	N/A
Robot RX60L	N/A	CS7MBSP / 467
Robot Controller	N/A	F01/5J72A1/A/01
Dell Computer Dimension 3000	N/A	N/A
SPEAG EDC3	N/A	N/A
SPEAG DAE3	2015-08-13	456
DASY4 Measurement Server	N/A	1176
SPEAG Probe, SAR Sensor ET3DV6	2015-08-19	1604
SPEAG Probe, SAR Sensor ES3DV2	2014-12-17	3019
Antenna, Dipole, ALS-D-835-S-2	2016-10-27	180-00564
Antenna, Dipole, ALS-D-1900-S-2	2017-10-27	210-00715
SPEAG Twin SAM Phantom	N/A	TP-1032
Muscle Equivalent Matter (835 MHz)	Each Time	N/A
Muscle Equivalent Matter (1900 MHz)	Each Time	N/A
Rohde & Schwarz, Signal Analyzer FSQ26	2016-03-19	200749
Mini Circuits, Amplifier	2015-10-17	N605601404
Power Meter Agilent E4419B	2015-07-11	MY4121511
Dielectric Probe Kit HP85070C	2016-03-06	US99360201
HP, Signal Generator, 83650B	2015-08-06	3614A00276
Mini Circuits, AMPLIFIER ZVE-8G+	2015-10-17	N605601404
HP, Analyzer, Network, 8753D	2015-10-28	3410A04346
HP, Directional Coupler 779D	N/A	1144A05102
Antenna, Horn DRH-118	N/A	A052704
R & S Communication Tester, CMU200	2015-07-12	103492
Agilent, Communications Analyzer, E5515C	2016-08-16	GB44051221

5 EUT Test Strategy and Methodology

5.1 Test positions for body-supported device and other configurations

This category includes most wireless handsets with fixed, retractable or internal antennas located toward the top half of the device, with or without a foldout, sliding or similar keypad cover. The handset should have its earpiece located within the upper ¼ of the device, either along the centerline or off-centered, as perceived by its users. This type of handset should be positioned in a normal operating position with the “test device reference point” located along the “vertical centerline” on the front of the device aligned to the “ear reference point”. The “test device reference point” should be located at the same level as the center of the earpiece region. The “vertical centerline” should bisect the front surface of the handset at its top and bottom edges. An “ear reference point” is located on the outer surface of the head phantom on each ear spacer. It is located 1.5 cm above the center of the ear canal entrance in the “phantom reference plane” defined by the three lines joining the center of each “ear reference point” (left and right) and the tip of the mouth.

A handset should be initially positioned with the earpiece region pressed against the ear spacer of a head phantom. For the SCC-34/SC-2 head phantom, the device should be positioned parallel to the “N-F” line defined along the base of the ear spacer that contains the “ear reference point”. For interim head phantoms, the device should be positioned parallel to the cheek for maximum RF energy coupling. The “test device reference point” is aligned to the “ear reference point” on the head phantom and the “vertical centerline” is aligned to the “phantom reference plane”. This is called the “initial ear position”. While maintaining these three alignments, the body of the handset is gradually adjusted to each of the following positions for evaluating SAR:



5.2 Cheek/Touch Position

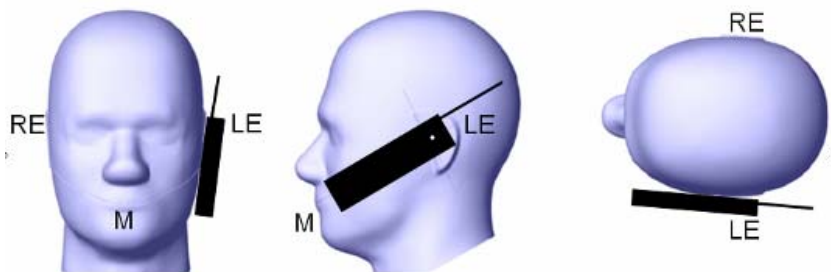
The device is brought toward the mouth of the head phantom by pivoting against the “ear reference point” or along the “N-F” line for the SCC-34/SC-2 head phantom.

This test position is established:

- When any point on the display, keypad or mouthpiece portions of the handset is in contact with the phantom.
- (or) When any portion of a foldout, sliding or similar keypad cover opened to its intended self-adjusting normal use position is in contact with the cheek or mouth of the phantom.

For existing head phantoms – when the handset loses contact with the phantom at the pivoting point, rotation should continue until the device touches the cheek of the phantom or breaks its last contact from the ear spacer.

Cheek /Touch Position



5.3 Ear/Tilt Position

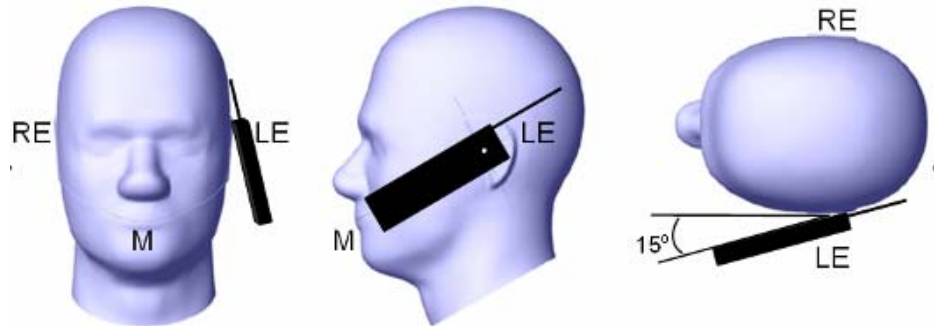
1) If the earpiece of the handset is not in full contact with the phantom’s ear spacer (in the “Cheek/Touch position”) and the peak SAR location for the “Cheek/Touch” position is located at the ear spacer region or corresponds to the earpiece region of the handset, the device should be returned to the “initial ear position” by rotating it away from the mouth until the earpiece is in full contact with the ear spacer.

2) (otherwise) The handset should be moved (translated) away from the cheek perpendicular to the line passes through both “ear reference points” (note: one of these ear reference points may not physically exist on a split head model) for approximate 2-3 cm. While it is in this position, the device handset is tilted away from the mouth with respect to the “test device reference point” until the inside angle between the vertical centerline on the front surface of the phone and the horizontal line passing through the ear reference point is by 15 80°. After the tilt, it is then moved (translated) back toward the head perpendicular to the line passes through both “ear reference points” until the device touches the phantom or the ear spacer. If the antenna touches the head first, the positioning process should be repeated with a tilt angle less than 15° so that the device and its antenna would touch the phantom simultaneously. This test position may require a device holder or positioner to achieve the translation and tilting with acceptable positioning repeatability.

If a device is also designed to transmit with its keypad cover closed for operating in the head position, such positions should also be considered in the SAR evaluation. The device should be tested on the left and right side of the head phantom in the “Cheek/Touch” and “Ear/Tilt” positions. When applicable, each configuration should be tested with the antenna in its fully extended and fully retracted positions. These test configurations should be tested at the high, middle and low frequency channels of each operating mode; for example, AMPS, CDMA, and TDMA. If the SAR measured at the middle channel for each test configuration (left, right, Cheek/Touch, Tile/Ear, extended and retracted) is at least 2.0 dB lower than the SAR limit, testing at the high and low channels is optional for such test configuration(s).

If the transmission band of the test device is less than 10 MHz, testing at the high and low frequency channels is optional.

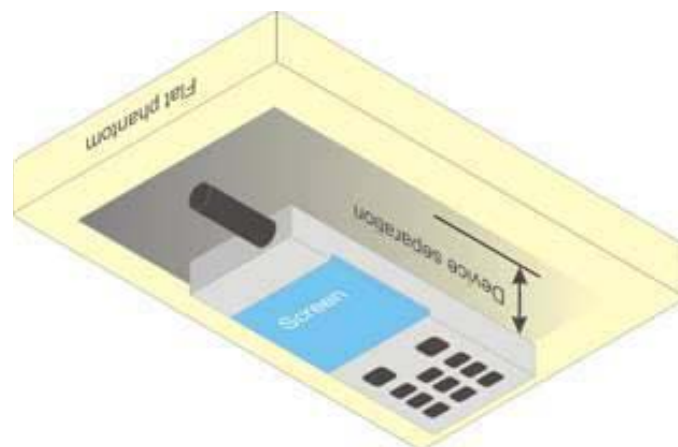
Ear /Tilt 15° Position



5.4 Test positions for body-worn and other configurations

Body-worn operating configurations should be tested with the belt-clips and holsters attached to the device and positioned against a flat phantom in normal use configurations. Devices with a headset output should be tested with a headset connected to the device. When multiple accessories that do not contain metallic components are supplied with the device, the device may be tested with only the accessory that dictates the closest spacing to the body. When multiple accessories that contain metallic components are supplied with the device, the device must be tested with each accessory that contains a unique metallic component. If multiple accessories share an identical metallic component (e.g., the same metallic belt-clip used with different holsters with no other metallic components), only the accessory that dictates the closest spacing to the body must be tested.

Body-worn accessories may not always be supplied or available as options for some devices that are intended to be authorized for body-worn use. A separation distance of 1.5 cm between the back of the device and a flat phantom is recommended for testing body-worn SAR compliance under such circumstances. Other separation distances may be used, but they should not exceed 2.5 cm. In these cases, the device may use body-worn accessories that provide a separation distance greater than that tested for the device provided however that the accessory contains no metallic components.



5.5 SAR Evaluation Procedure

The evaluation was performed with the following procedure:

Step 1: Measurement of the SAR value at a fixed location above the ear point or central position was used as a reference value for assessing the power drop. The SAR at this point is measured at the start of the test and then again at the end of the testing.

Step 2: The SAR distribution at the exposed side of the head was measured at a distance of 4 mm from the inner surface of the shell. The area covered the entire dimension of the head or EUT and the horizontal grid spacing was 15 mm x 15 mm. Based on these data, the area of the maximum absorption was determined by line interpolation. The first Area Scan covers the entire dimension of the EUT to ensure that the hotspot was correctly identified.

Step 3: Around this point, a volume of 30 mm x 30 mm x 21 mm was assessed by measuring 5 x 5 x 7 points. On the basis of this data set, the spatial peak SAR value was evaluated under the following procedure:

1. The data at the surface were extrapolated, since the center of the dipoles is 1.2 mm away from the tip of the probe and the distance between the surface and the lowest measuring point is 1.3 mm. The extrapolation was based on a least square algorithm. A polynomial of the fourth order was calculated through the points in z-axes. This polynomial was then used to evaluate the points between the surface and the probe tip.
2. The maximum interpolated value was searched with a straightforward algorithm. Around this maximum the SAR values averaged over the spatial volumes (1 g or 10 g) were computed by the 3D-Spline interpolation algorithm. The 3D-Spline is composed of three one dimensional splines with the "Not a knot"-condition (in x, y and z-directions). The volume was integrated with the trapezoidal-algorithm. One thousand points (10 x 10 x 10) were interpolated to calculate the averages.
3. All neighboring volumes were evaluated until no neighboring volume with a higher average value was found.

Step 4: Re-measurement of the SAR value at the same location as in Step 1. If the value changed by more than 5%, the evaluation was repeated.

5.6 Test Methodology

- KDB 447498 D01 (General SAR Guidance)
- KDB 648474 D01 SAR Handsets Multi Xmitter and Ant)
- KDB 865664 D01 (SAR Measurements up to 6 GHz)

6 DASY4 SAR Evaluation Procedure

6.1 Power Reference Measurement

The Power Reference Measurement and Power Drift Measurement jobs are useful jobs for monitoring the power drift of the device under test in the batch process. Both jobs measure the field at a specified reference position, at a selectable distance from the phantom surface. The reference position can be either the selected section's grid reference point or a user point in this section. The reference job projects the selected point onto the phantom surface, orients the probe perpendicularly to the surface, and approaches the surface using the selected detection point method. The Minimum distance of probe sensors to surface determines the closest measurement point to phantom surface. By default, the Minimum distance of probe sensors to surface is 4mm. This distance can be modified by the user, but cannot be smaller than the Distance of sensor calibration points to probe tip as defined in the probe properties (for example, 2.7mm for an ET3DV6 probe type).

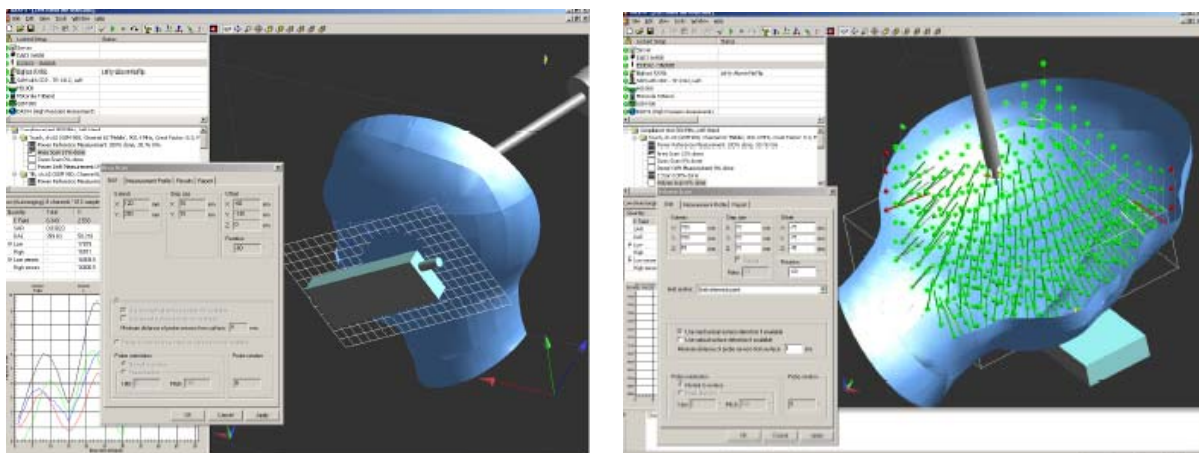
6.2 Area Scan

The Area Scan is used as a fast scan in two dimensions to find the area of high field values, before doing a finer measurement around the hot spot. The sophisticated interpolation routines implemented in DASY4 software can find the maximum locations even in relatively coarse grids.

The scanning area is defined by an editable grid. This grid is anchored at the grid reference point of the selected section in the phantom. When the Area Scan's property sheet is brought-up, grid settings can be edited by a user.

When an Area Scan has measured all reachable points, it computes the field maxima found in the scanned area, within a range of the global maximum. The range (in dB) is specified in the standards for compliance testing. For example, a 2 dB range is required in IEEE 1528-2003, EN 50361 and IEC 62209 standards, whereby 3 dB is a requirement when compliance is assessed in accordance with the ARIB standard (Japan). If only one Zoom Scan follows the Area Scan, then only the absolute maximum will be taken as reference. For cases where multiple maximums are detected, the number of Zoom Scans has to be increased accordingly.

After measurement is completed, all maxima and their coordinates are listed in the Results property page. The maximum selected in the list is highlighted in the 3-D view. For the secondary maxima returned from an Area Scan, the user can specify a lower limit (peak SAR value), in addition to the Find secondary maxima within x dB condition. Only the primary maximum and any secondary maxima within x dB from the primary maximum and above this limit will be measured.



6.3 Zoom Scan

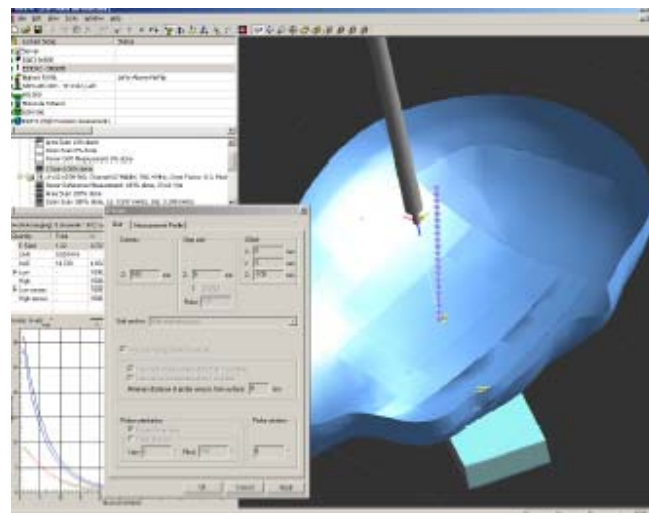
Zoom Scans are used to assess the peak spatial SAR values within a cubic averaging volume containing 1 g and 10 g of simulated tissue. The default Zoom Scan measures 5 x 5 x 7 points within a cube whose base faces are centered around the maxima found in a preceding area scan job within the same procedure. When the measurement is done, the Zoom Scan evaluates the averaged SAR for 1 g and 10 g and displays these values next to the job's label.

6.4 Power drift measurement

The Power Drift Measurement job measures the field at the same location as the most recent power reference measurement job within the same procedure, and with the same settings. The Power Drift Measurement gives the field difference in dB from the reading conducted within the last Power Reference Measurement. Several drift measurements are possible for one reference measurement. This allows a user to monitor the power drift of the device under test within a batch process. The measurement procedure is the same as Step 1.

6.5 Z-Scan

The Z Scan job measures points along a vertical straight line. The line runs along the Z axis of a one-dimensional grid. A user can anchor the grid to the section reference point, to any defined user point or to the current probe location. As with any other grids, the local Z axis of the anchor location establishes the Z axis of the grid.



7 Description of Test System

These measurements were performed with the automated near-field scanning system DASY4 from Schmid & Partner Engineering AG (SPEAG) which is the fourth generation of the system shown in the figure hereinafter:



The system is based on a high precision robot (working range greater than 0.9m), which positions the probes with a positional repeatability of better than $\pm 0.02\text{mm}$. Special E- and H-field probes have been developed for measurements close to material discontinuity, the sensors of which are directly loaded with a Schottky diode and connected via highly resistive lines to the data acquisition unit.

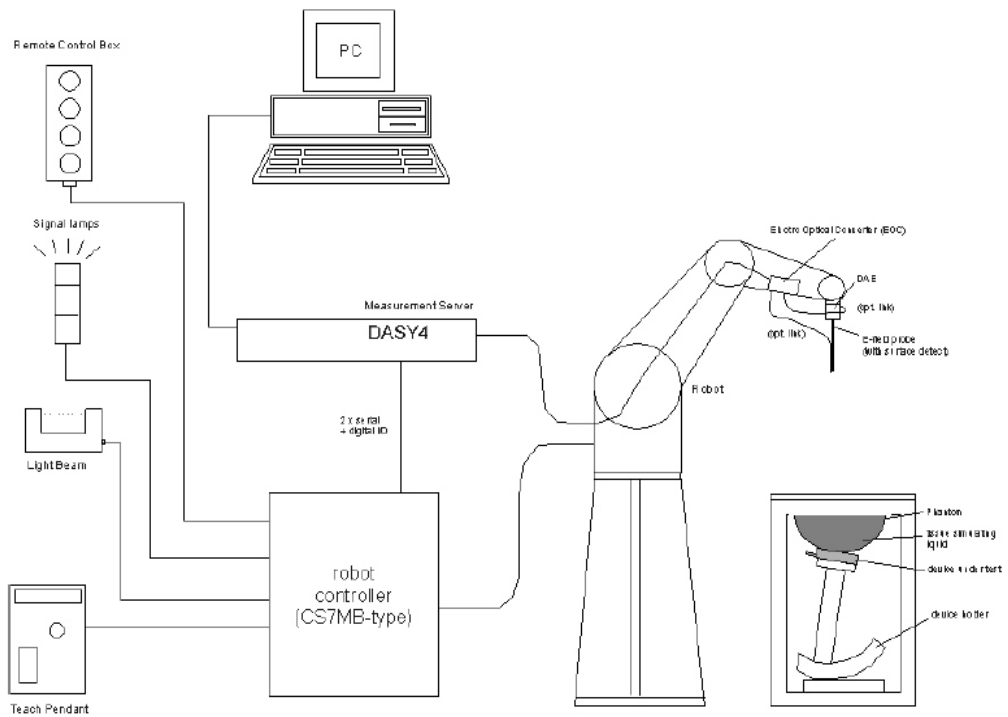
The SAR measurements were conducted with the dosimetric probe ET3DV6 SN: 1604 (manufactured by SPEAG), designed in the classical triangular configuration and optimized for dosimetric evaluation. The probe has been calibrated according to the procedure with accuracy of better than $\pm 10\%$. The spherical isotropy was evaluated with the procedure and found to be better than $\pm 0.25\text{dB}$.

7.1 Tissue Dielectric Parameters

IEEE SCC-34/SC-2 P1528 Recommended Tissue Dielectric Parameters

Frequency (MHz)	Head Tissue		Body Tissue	
	ϵ_r	σ (S/m)	ϵ_r	σ (S/m)
150	52.3	0.76	61.9	0.80
300	45.3	0.87	58.2	0.92
450	43.5	0.87	56.7	0.94
835	41.5	0.90	55.2	0.97
900	41.5	0.97	55.0	1.05
915	41.5	0.98	55.0	1.06
1450	40.5	1.20	54.0	1.30
1610	40.3	1.29	53.8	1.40
1800-2000	40.0	1.40	53.3	1.52
2450	39.2	1.80	52.7	1.95
3000	38.5	2.40	52.0	2.73
5800	35.3	5.27	48.2	6.00

7.2 Measurement System Diagram



The DASY4 system for performing compliance tests consists of the following items:

- A standard high precision 6-axis robot (Stäubli RX family) with controller, teach pendant and software. An arm extension for accommodating the data acquisition electronics (DAE).
- A dosimetric probe, i.e., an isotropic E-field probe optimized and calibrated for usage in tissue simulating liquid. The probe is equipped with an optical surface detector system.
- A data acquisition electronics (DAE) which performs the signal amplification, signal multiplexing, AD-conversion, offset measurements, mechanical surface detection, collision detection, etc. The unit is battery powered with standard or rechargeable batteries. The signal is optically transmitted to the EOC.
- The Electro-optical converter (EOC) performs the conversion between optical and electrical of the signals for the digital communication to the DAE and for the analog signal from the optical surface detection. The EOC is connected to the measurement server.
- The function of the measurement server is to perform the time critical tasks such as signal filtering, control of the robot operation and fast movement interrupts.
- A probe alignment unit which improves the (absolute) accuracy of the probe positioning.
- A computer operating Windows 2000 or Windows XP.
- DASY4 software.
- Remote control with teach pendant and additional circuitry for robot safety such as warning lamps, etc.
- The SAM twin phantom enabling testing left-hand and right-hand usage.
- The device holder for handheld mobile phones.
- Tissue simulating liquid mixed according to the given recipes.
- Validation dipole kits allowing system validation.

7.3 System Components

- DASY4 Measurement Server
- Data Acquisition Electronics
- Probes
- Light Beam Unit
- Medium
- SAM Twin Phantom
- Device Holder for SAM Twin Phantom
- System Validation Kits
- Robot

DASY4 Measurement Server

The DASY4 measurement server is based on a PC/104 CPU board with a 166MHz low-power Pentium, 32MB chip disk and 64MB RAM. The necessary circuits for communication with either the DAE4 (or DAE3) electronic box as well as the 16-bit AD-converter system for optical detection and digital I/O interface are contained on the DASY4 I/O-board, which is directly connected to the PC/104 bus of the CPU board.



The measurement server performs all real-time data evaluation for field measurements and surface detection, controls robot movements and handles safety operation. The PC-operating system cannot interfere with these time critical processes. All connections are supervised by a watchdog, and disconnection of any of the cables to the measurement server will automatically disarm the robot and disable all program-controlled robot movements. Furthermore, the measurement server is equipped with two expansion slots which are reserved for future applications. Please note that the expansion slots do not have a standardized pin out and therefore only the expansion cards provided by SPEAG can be inserted. Expansion cards from any other supplier could seriously damage the measurement server.

Data Acquisition Electronics

The data acquisition electronics DAE3 consists of a highly sensitive electrometer grade preamplifier with auto-zeroing, a channel and gain-switching multiplexer, a fast 16 bit AD-converter and a command decoder and control logic unit. Transmission to the measurement server is accomplished through an optical downlink for data and status information as well as an optical uplink for commands and the clock.



Probes

The DASY system can support many different probe types.

Dosimetric Probes: These probes are specially designed and calibrated for use in liquids with high permittivities. They should not be used in air, since the spherical isotropy in air is poor (± 2 dB). The dosimetric probes have special calibrations in various liquids at different frequencies.

Free Space Probes: These are electric and magnetic field probes specially designed for measurements in free space. The z-sensor is aligned to the probe axis and the rotation angle of the x-sensor is specified. This allows the DASY system to automatically align the probe to the measurement grid for field component measurement. The free space probes are generally not calibrated in liquid. (The H-field probes can be used in liquids without any change of parameters.)

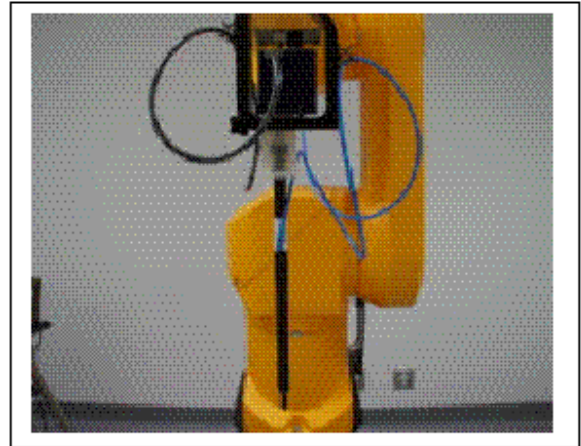
Temperature Probes: Small and sensitive temperature probes for general use. They use a completely different parameter set and different evaluation procedures. Temperature rise features allow direct SAR evaluations with these probes.

ET3DV6 Probe Specification

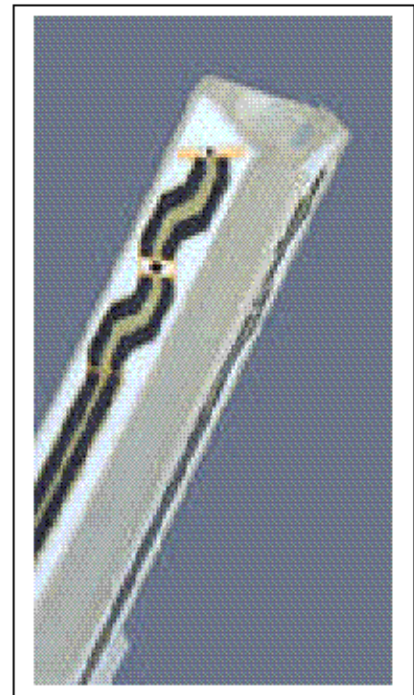
Construction Symmetrical design with triangular core
 Built-in optical fiber for surface detection System
 Built-in shielding against static charges
 Calibration In air from 10 MHz to 2.5 GHz
 In brain and muscle simulating tissue at
 Frequencies of 450 MHz, 900 MHz and
 1.8 GHz (accuracy $\pm 8\%$)
 Frequency 10 MHz to > 6 GHz; Linearity: ± 0.2 dB
 (30 MHz to 3 GHz)
 Directivity ± 0.2 dB in brain tissue (rotation around
 probe axis)
 ± 0.4 dB in brain tissue (rotation normal probe axis)
 Dynamic 5 mW/g to > 100 mW/g;
 Range Linearity: ± 0.2 dB
 Surface ± 0.2 mm repeatability in air and clear liquids
 Detection over diffuse reflecting surfaces.
 Dimensions Overall length: 330 mm
 Tip length: 16 mm

Body diameter: 12 mm
 Tip diameter: 6.8 mm
 Distance from probe tip to dipole centers: 2.7 mm
 Application General dosimetric up to 3 GHz
 Compliance tests of mobile phones
 Fast automatic scanning in arbitrary phantoms

The SAR measurements were conducted with the dosimetric probe ET3DV6 designed in the classical triangular configuration and optimized for dosimetric evaluation. The probe is constructed using the thick film technique; with printed resistive lines on ceramic substrates. The probe is equipped with an optical multi-fiber line ending at the front of the probe tip. It is connected to the EOC box on the robot arm and provides an automatic detection of the phantom surface. Half of the fibers are connected to a pulsed infrared transmitter, the other half to a synchronized receiver. As the probe approaches the surface, the reflection from the surface produces a coupling from the transmitting to the receiving fibers. This reflection increases first during the approach, reaches maximum and then decreases. If the probe is flatly touching the surface, the coupling is zero. The distance of the coupling maximum to the surface is independent of the surface reflectivity and largely independent of the surface to probe angle. The DASY3 software reads the reflection during a software approach and looks for the maximum using a 2nd order fitting. The approach is stopped when reaching the maximum.



Photograph of the probe



Inside view of
ET3DV6 E-field Probe

E-Field Probe Calibration Process

Each probe is calibrated according to a dosimetric assessment procedure described in [6] with accuracy better than +/- 10%. The spherical isotropy was evaluated with the procedure described in [7] and found to be better than +/-0.25dB. The sensitivity parameters (NormX, NormY, NormZ), the diode compression parameter (DCP) and the conversion factor (ConvF) of the probe are tested.

The free space E-field from amplified probe outputs is determined in a test chamber. This is performed in a TEM cell for frequencies below 1 GHz, and in a waveguide above 1 GHz for free space. For the free space calibration, the probe is placed in the volumetric center of the cavity and at the proper orientation with the field. The probe is then rotated 360 degrees.

E-field temperature correlation calibration is performed in a flat phantom filled with the appropriate simulated brain tissue. The measured free space E-field in the medium correlates to temperature rise in dielectric medium. For temperature correlation calibration a RF transparent thermistor-based temperature probe is used in conjunction with the E-field probe.

Data Evaluation

The DASY4 post-processing software (SEMCAD) automatically executes the following procedures to calculate the field units from the microvolt readings at the probe connector. The parameters used in the evaluation are stored in the configuration modules of the software:

Probe parameters: - Sensitivity	Normi, ai0, ai1, ai2
- Conversion factor	ConvFi
- Diode compression point	dcpi
Device parameters: - Frequency	f
- Crest factor	cf
Media parameters: - Conductivity	σ
- Density	ρ

These parameters must be set correctly in the software. They can be found in the component documents or they can be imported into the software from the configuration files issued for the DASY components. In the direct measuring mode of the multimeter option, the parameters of the actual system setup are used. In the scan visualization and export modes, the parameters stored in the corresponding document files are used.

The first step of the evaluation is a linearization of the filtered input signal to account for the compression characteristics of the detector diode. The compensation depends on the input signal, the diode type and the DC-transmission factor from the diode to the evaluation electronics. If the exciting field is pulsed, the crest factor of the signal must be known to correctly compensate for peak power. The formula for each channel can be given as:

$$V_i = U_i + U_i^2 \cdot \frac{cf}{dcp_i}$$

With V_i = compensated signal of channel i (i =x, y, z)
 U_i = input signal of channel i (i =x, y, z)
 cf = crest factor of exciting field (DASY parameter)
 dcp_i = diode compression point (DASY parameter)

From the compensated input signals the primary field data for each channel can be evaluated:

$$\text{E - field probes : } E_i = \sqrt{\frac{V_i}{\text{Norm}_i \cdot \text{ConF}}}$$

$$\text{H - field probes : } H_i = \sqrt{V_i} \cdot \frac{a_{i0} + a_{i1}f + a_{i2}f^2}{f}$$

- With V_i = compensated signal of channel i ($i = x, y, z$)
 Norm_i = sensor sensitivity of channel i ($i = x, y, z$)
 $\mu\text{V}/(\text{V}/\text{m})^2$ for E-field probes
 ConF = sensitivity enhancement in solution
 a_{ij} = sensor sensitivity factors for H-field probes
 f = carrier frequency [GHz]
 E_i = electric field strength of channel i in V/m
 H_i = diode compression point (DASY parameter)

The RSS value of the field components gives the total field strength (Hermitian magnitude):

$$E_{tot} = \sqrt{E_x^2 + E_y^2 + E_z^2}$$

The primary field data are used to calculate the derived field units.

$$SAR = E_{tot}^2 \cdot \frac{\sigma}{\rho \cdot 1'000}$$

- With SAR = local specific absorption rate in mW/g
 E_{tot} = total field strength in V/m
 σ = conductivity in [mho/meter] or [Siemens/meter]
 ρ = equivalent tissue density in g/cm^3

Note that the density is normally set to 1, to account for actual brain density rather than the density of the simulation liquid.

Light Beam Unit

The light beam switch allows automatic “tooling” of the probe. During the process, the actual position of the probe tip with respect to the robot arm is measured, as well as the probe length and the horizontal probe offset. The software then corrects all movements, so that the robot coordinates are valid for the probe tip. The repeatability of this process is better than 0.1 mm. If a position has been taught with an aligned probe, the same position will be reached with another aligned probe within 0.1 mm, even if the other probe has different dimensions. During probe rotations, the probe tip will keep its actual position.

Medium

The parameters of the tissue simulating liquid strongly influence the SAR in the liquid. The parameters for the different frequencies are defined in the corresponding compliance standards (e.g., EN 50361, IEEE 1528-2003).

Parameter measurements

Several measurement systems are available for measuring the dielectric parameters of liquids:

- The open coax test method (e.g., HP85070 dielectric probe kit) is easy to use, but has only moderate accuracy. It is calibrated with open, short, and deionized water and the calibrations a critical process.
- The transmission line method (e.g., model 1500T from DAMASKOS, INC.) measures the transmission and reflection in a liquid filled high precision line. It needs standard two port calibration and is probably more accurate than the open coax method.
- The reflection line method measures the reflection in a liquid filled shorted precision lined. The method is not suitable for these liquids because of its low sensitivity.
- The slotted line method scans the field magnitude and phase along a liquid filled line. The evaluation is straight forward and only needs a simple response calibration. The method is very accurate, but can only be used in high loss liquids and at frequencies above 100 to 200MHz. Cleaning the line can be tedious.

SAM Twin Phantom

The SAM twin phantom is a fiberglass shell phantom with 2mm shell thickness (except the ear region where shell thickness increases to 6mm). It has three measurement areas:

- Left hand
- Right hand
- Flat phantom

The phantom table comes in two sizes: A 100 x 50 x 85 cm (L x W x H) table for use with free standing robots (DASY4 professional system option) or as a second phantom and a 100 x 75 x 85 cm (L x W x H) table with reinforcements for table mounted robots (DASY4 compact system option).

The bottom plate contains three pair of bolts for locking the device holder. The device holder positions are adjusted to the standard measurement positions in the three sections. Only one device holder is necessary if two phantoms are used (e.g., for different liquids) A white cover is provided to tap the phantom during o_{-} periods to prevent water evaporation and changes in the liquid parameters. Free space scans of devices on the cover are possible. On the phantom top, three reference markers are provided to identify the phantom position with respect to the robot.



The phantom can be used with the following tissue simulating liquids:

- Water-sugar based liquids can be left permanently in the phantom. Always cover the liquid if the system is not used, otherwise the parameters will change due to water evaporation.
- Glycol based liquids should be used with care. As glycol is a softener for most plastics, the liquid should be taken out of the phantom and the phantom should be dried when the system is not used (desirable at least once a week).
- Do not use other organic solvents without previously testing the phantom's compatibility.

Device Holder for SAM Twin Phantom

The SAR in the phantom is approximately inversely proportional to the square of the distance between the source and the liquid surface. For a source in 5mm distance, a positioning uncertainty of ± 0.5 mm would produce a SAR uncertainty of $\pm 20\%$. An accurate device positioning is therefore crucial for accurate and repeatable measurements. The positions, in which the devices must be measured, are defined by the standards.

The DASY device holder is designed to cope with different positions given in the standard. It has two scales for the device rotation (with respect to the body axis) and the device inclination (with respect to the line between the ear reference points). The rotation centers for both scales is the ear reference point ERP). Thus the device needs no repositioning when changing the angles.



The DASY device holder has been made out of low-loss POM material having the following dielectric parameters: relative permittivity $\epsilon_r=3$ and loss tangent $\tan \delta=0.02$. The amount of dielectric material has been reduced in the closest vicinity of the device, since measurements have suggested that the influence of the clamp on the test results could thus be lowered.

System Validation Kits

Each DASY system is equipped with one or more system validation kits. These units, together with the predefined measurement procedures within the DASY software, enable the user to conduct the system performance check and system validation. For that purpose a well defined SAR distribution in the flat section of the SAM twin phantom is produced.

System validation kit includes a dipole, tripod holder to fix it underneath the flat phantom and a corresponding distance holder. Dipoles are available for the variety of frequencies between 300MHz and 6 GHz (dipoles for other frequencies or media and other calibration conditions are available upon request).

The dipoles are highly symmetric and matched at the center frequency for the specified liquid and distance to the flat phantom (or flat section of the SAM-twin phantom). The accurate distance between the liquid surface and the dipole center is achieved with a distance holder that snaps on the dipole.

Robot

The DASY4 system uses the high precision industrial robots RX60L, RX90 and RX90L, as well as the RX60BL and RX90BL types out of the newer series from Stäubli SA (France). The RX robot series offers many features that are important for our application:

- High precision (repeatability 0.02mm)
- High reliability (industrial design)
- Low maintenance costs (virtually maintenance-free due to direct drive gears; no belt drives)
- Jerk-free straight movements (brushless synchronous motors; no stepper motors)
- Low ELF interference (the closed metallic construction shields against motor control fields)

For the newly delivered DASY4 systems as well as for the older DASY3 systems delivered since 1999, the CS7MB robot controller version from Stäubli is used. Previously delivered systems have either a CS7 or CS7M controller; the differences to the CS7MB are mainly in the hardware, but some procedures in the robot software from Stäubli are also not completely the same. The following descriptions about robot hard- and software correspond to CS7MB controller with software version 13.1 (edit S5). The actual commands, procedures and configurations, also including details in hardware, might differ if an older robot controller is in use. In this case please also refer to the Stäubli manuals for further information.

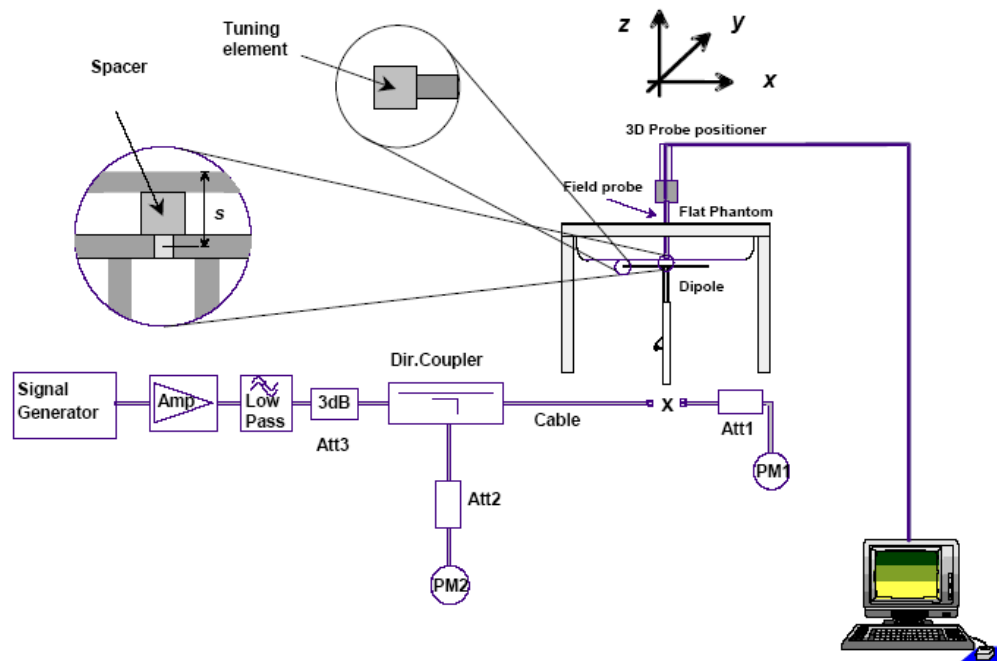


8 SAR Measurement System Verification

8.1 System Accuracy Verification

SAR system verification is required to confirm measurement accuracy. The system verification must be performed for each frequency band. System verification must be performed before each series of SAR measurements.

8.2 SAR System Verification Setup and procedure



Procedure:

- 1) The SAR system verification measurements were performed in the flat section of TWIN SAM or flat phantom with shell thickness of 2 ± 0.2 mm filled with head or body liquid.
- 2) The depth of liquid in phantom must be ≥ 15 cm for SAR measurement less than 3 GHz and ≥ 10 cm for SAR measurement above 3 GHz.
- 3) The dipole was mounted below the center of flat phantom, and oriented parallel to the Y-Axis. The standard measurement distance is 15 mm (below 1 GHz) and 10 mm (above 1 GHz) from dipole center to the liquid surface.
- 4) The dipole input power was 250 mW or 100 mW.
- 5) The SAR results are normalized to 1 Watt input power.
- 6) Compared the normalized the SAR results to the dipole calibration results.

8.3 Liquid and System Validation

Date	Simulant	Freq. [MHz]	Parameters	Liquid Temp [°C]	Target Value	Measured Value	Deviation [%]	Limits [%]
2015-07-03	Head	835	ϵ_r	22	41.5	42.9	3.26	± 5
			σ	22	0.90	0.91	1.10	± 5
			1g SAR	22	9.78	1.01*10	3.17	± 10
	Body		ϵ_r	22	55.2	55.7	0.90	± 5
			σ	22	0.97	0.98	1.02	± 5
			10g SAR	22	6.27	0.571*10	-9.81	± 10
	Head	1900	ϵ_r	22	40.0	39.68	-0.81	± 5
			σ	22	1.40	1.41	0.71	± 5
			1g SAR	23	41.28	4.20*10	1.71	± 10
	Body		ϵ_r	22	53.3	51.4	-3.70	± 5
			σ	22	1.52	1.54	1.30	± 5
			10g SAR	22	20.41	2.21*10	7.65	± 10

Frequency	Liquid Type	Liquid Parameter		Target Value		Delta (%)		Tolerance (%)
		ϵ_r	σ (S/m)	ϵ_r	σ (S/m)	$\Delta\epsilon_r$	$\Delta\sigma$ (S/m)	
824.2	Head	41.26	0.91	41.55	0.90	-0.70	1.11	± 5
	Body	53.07	0.99	55.01	0.97	-3.53	2.06	± 5
836.6	Head	41.15	0.91	41.50	0.90	-0.84	1.11	± 5
	Body	52.95	0.97	55.20	0.97	-4.08	0.00	± 5
848.8	Head	43.27	0.90	41.50	0.92	4.27	-2.17	± 5
	Body	52.64	1.00	55.16	0.99	-4.57	1.01	± 5
1850.2	Head	39.55	1.42	40.00	1.40	-1.13	1.43	± 5
	Body	51.30	1.52	53.30	1.52	-3.75	0.00	± 5
1880.0	Head	39.71	1.41	40.00	1.40	-0.72	0.71	± 5
	Body	52.02	1.53	53.30	1.52	-2.40	0.66	± 5
1909.8	Head	39.57	1.43	40.00	1.40	-1.08	2.14	± 5
	Body	53.24	1.55	53.30	1.52	-0.11	1.97	± 5

ϵ_r = relative permittivity, σ = conductivity and $\rho=1000 \text{ kg/m}^3$

9 SAR Measurement Results

This page summarizes the results of the performed dosimetric evaluation. The plots with the corresponding SAR distributions, which reveal information about the location of the maximum SAR with respect to the device, could be found in Appendix E.

9.1 Test Environmental Conditions

Temperature:	20-24 °C
Relative Humidity:	27-34 %
ATM Pressure:	101.6-102.9 kPa

Testing was performed by Simon Ma from 2015-07-03 to 2015-07-04 in SAR chamber.

9.2 Test results

EUT Position	Frequency (MHz)	Test Mode	Power Drift (dB)	Meas. Power (dBm)	Max. Tune up Power (dBm)	1g SAR (W/Kg)			
						Scaled Factor	Meas. SAR	Scaled SAR	Plot
Left Head Cheek	836.6	Voice	-0.024	22.77	23.00	1.05	0.365	0.385	/
Left Head Tilt	836.6	Voice	-0.113	22.77	23.00	1.05	0.273	0.288	/
Right Head Cheek	824.2	Voice	-0.019	22.75	23.00	1.06	0.293	0.310	/
	836.6	Voice	-0.008	22.77	23.00	1.05	0.407	0.429	/
	848.8	Voice	-0.094	22.50	23.00	1.12	0.488	0.548	1#
Right Head Tilt	836.6	Voice	-0.022	22.77	23.00	1.05	0.239	0.252	/

Note:

1. When the 1-g SAR is ≤ 0.8 W/Kg, testing for other channels are optional.

EUT Position	Frequency (MHz)	Test Mode	Power Drift (%)	Max. Meas. Power (dBm)	Max. Rated Power (dBm)	10-g SAR (W/Kg)			
						Scaled Factor	Meas. SAR	Scaled SAR	Plot
Handheld-Back (0mm)	824.2	GPRS	-0.06	23.75	24.00	1.06	0.497	0.526	2#
Handheld -Left (0mm)	824.2	GPRS	-0.04	23.75	24.00	1.06	0.227	0.240	/
Handheld -Right(0mm)	824.2	GPRS	-0.001	23.75	24.00	1.06	0.238	0.252	/
Handheld -Bottom(0mm)	824.2	GPRS	0.01	23.75	24.00	1.06	0.02	0.021	

Note:

1. When the 10-g SAR is ≤ 2.0 W/Kg, testing for other channels are optional.
 2. The Multi-slot Classes of EUT is Class 10 which has maximum 4 Downlink slots and 2 Uplink slots, the maximum active slots is 5, when perform the multiple slots scan, 3DL+2UL is the worst case.

EUT Position	Frequency (MHz)	Test Mode	Power Drift (dB)	Meas. Power (dBm)	Max. Tune up Power (dBm)	1g SAR (W/Kg)			
						Scaled Factor	Meas. SAR	Scaled SAR	Plot
Left Head Cheek	1880.0	Voice	-0.094	20.07	20.50	1.10	0.089	0.098	
Left Head Tilt	1880.0	Voice	0.028	20.07	20.50	1.10	0.055	0.061	/
Right Head Cheek	1850.2	Voice	-0.219	19.92	20.50	1.14	0.192	0.219	3#
	1880	Voice	0.022	20.07	20.50	1.10	0.154	0.170	/
	1909.8	Voice	-0.073	20.27	20.50	1.05	0.126	0.133	/
Right Head Tilt	1880	Voice	-0.057	20.07	20.50	1.10	0.064	0.071	/

Note:

1. When the 1-g SAR is ≤ 0.8 W/Kg, testing for other channels are optional.

EUT Position	Frequency (MHz)	Test Mode	Power Drift (%)	Max. Meas. Power (dBm)	Max. Rated Power (dBm)	10-g SAR (W/Kg)			
						Scaled Factor	Meas. SAR	Scaled SAR	Plot
Handheld-Back (0mm)	1850.2	GPRS	-0.03	20.85	21.00	1.04	0.388	0.402	4#
Handheld -Left (0mm)	1850.2	GPRS	-0.074	20.85	21.00	1.04	0.042	0.043	/
Handheld -Right(0mm)	1850.2	GPRS	0.03	20.85	21.00	1.04	0.173	0.179	/
Handheld -Bottom(0mm)	1850.2	GPRS	0.01	20.85	21.00	1.04	0.110	0.114	

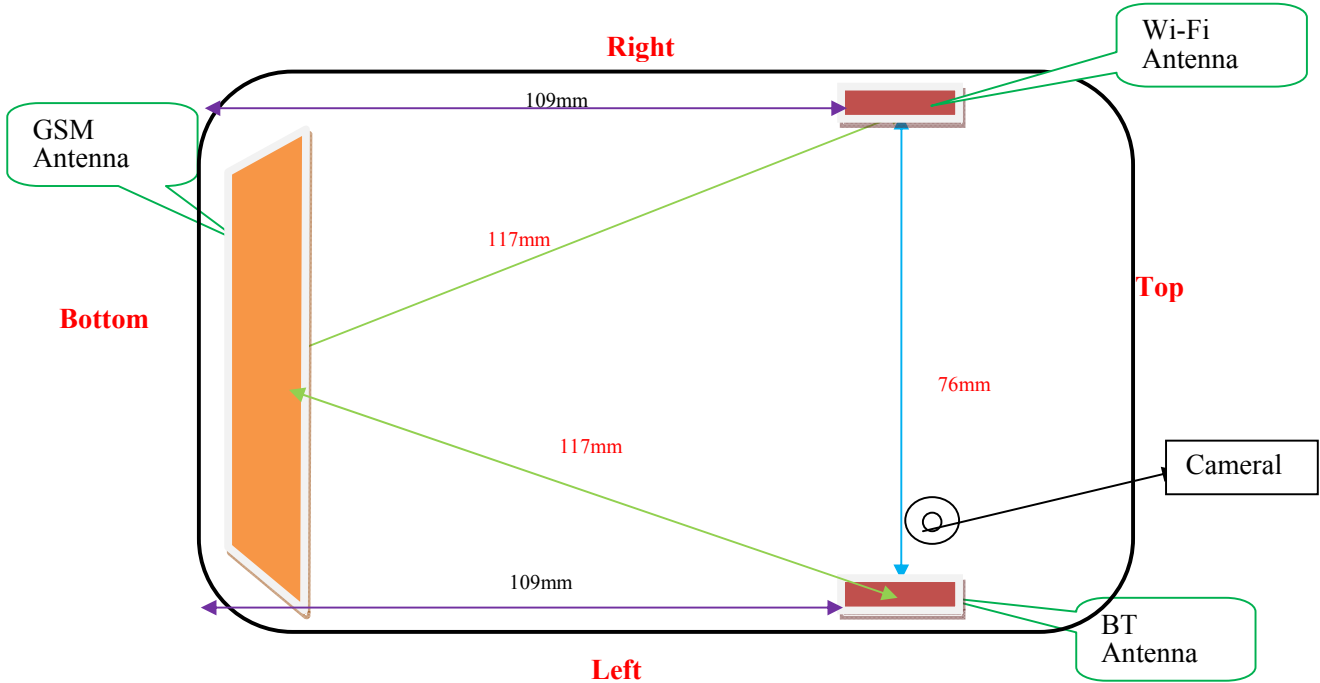
Note:

1. When the 10-g SAR is ≤ 2.0 W/Kg, testing for other channels are optional.

2. The Multi-slot Classes of EUT is Class 10 which has maximum 4 Downlink slots and 2 Uplink slots, the maximum active slots is 5, when perform the multiple slots scan, 3DL+2UL is the worst case.

10 SAR SIMULTANEOUS TRANSMISSION DESCRIPTION

BT& Wi-Fi and GS Antennas Location:



Simultaneous Transmission:

Description of Simultaneous Transmit Capabilities			Antennas Distance (mm)
Transmitter Combination	Simultaneous?	Hotspot?	
GSM + Bluetooth	√	×	117
GSM + Wi-Fi	√	×	117
GPRS + Bluetooth	√	×	117
GPRS + Wi-Fi	√	×	117
Wi-Fi + Bluetooth	×	×	76

Standalone SAR test exclusion considerations

Head Position:

Mode	P_{avg} (dBm)	P_{avg} (mW)	Distance (mm)	Calculated value	Threshold (1-g)	SAR Test Exclusion
GSM850	23.00	199.53	0	36.8	3.0	No
PCS1900	20.50	112.20	0	30.9	3.0	No
Wi-Fi	9.00	7.94	0	2.6	3.0	Yes
Bluetooth	0.50	1.12	0	0.4	3.0	Yes

Handheld Position:

Mode	P _{avg} (dBm)	P _{avg} (Mw)	Distance (mm)	Calculated value	Threshold (10-g)	SAR Test Exclusion
GPRS850	24.00	251.19	0	46.3	7.5	No
GPRS1900	21.00	125.89	0	34.7	7.5	No
Wi-Fi	9.00	7.94	0	2.6	7.5	Yes
Bluetooth	0.50	1.12	0	0.4	7.5	Yes

The 1-g and 10-g SAR test exclusion thresholds for 100 MHz to 6 GHz at *test separation distances* ≤ 50 mm are determined by:

$[(\text{max. power of channel, including tune-up tolerance, mW}) / (\text{min. test separation distance, mm})] \cdot [\sqrt{f(\text{GHz})}] \leq 3.0$ for 1-g SAR and ≤ 7.5 for 10-g extremity SAR, where

1. $f(\text{GHz})$ is the RF channel transmit frequency in GHz.
2. Power and distance are rounded to the nearest mW and mm before calculation.
3. The result is rounded to one decimal place for comparison.
4. When the minimum test separation distance is < 5 mm, a distance of 5 mm is applied to determine SAR test Exclusion.

Standalone SAR estimation:

Mode	Distance to the Side (mm)		P _{avg} (dBm)	P _{avg} (mW)	Estimated 1-g (W/kg)	Estimated 10-g (W/kg)
Wi-Fi Head	Head	0	9.00	7.94	0.347	/
Wi-Fi Handheld	Back	0	9.00	7.94	/	0.141
	Left	81	9.00	7.94	/	0.100
	Right	5	9.00	7.94	/	0.141
	Top	27	9.00	7.94	/	0.0261
	Bottom	109	9.00	7.94	/	0.100
BT Head	Head	0	0.50	1.12	0.053	/
BT Handheld	Back	0	0.50	1.12	/	0.022
	Left	5	0.50	1.12	/	0.022
	Right	81	0.50	1.12	/	0.100
	Top	27	0.50	1.12	/	0.004
	Bottom	109	0.50	1.12	/	0.100

When standalone SAR test exclusion applies to an antenna that transmits simultaneously with other antennas, the standalone SAR must be estimated according to following to determine simultaneous transmission SAR test exclusion:

1. $[(\text{max. power of channel, including tune-up tolerance, mW}) / (\text{min. test separation distance, mm})] \cdot [\sqrt{f(\text{GHz})} / x]$ W/kg for test separation distances ≤ 50 mm; where $x = 7.5$ for 1-g SAR, where $x = 18.5$ for 10-g SAR.

When the minimum test separation distance is < 5 mm, a distance of 5 mm is applied to determine SAR test Exclusion.

2. 0.4 W/kg for 1-g SAR and 1.0 W/kg for 10-g SAR, when the test separation distances is > 50 mm.

Head Simultaneous SAR test exclusion considerations:**GSM with BT:**

Mode	Position	Reported SAR (W/kg)		Σ SAR
		GSM	BT	< 1.6W/kg
GSM850	Left Head Cheek	0.385	0.053	0.438
	Left Head Tilt	0.288	0.053	0.341
	Right Head Cheek	0.548	0.053	0.601
	Right Head Tilt	0.252	0.053	0.305
PCS1900	Left Head Cheek	0.098	0.053	0.151
	Left Head Tilt	0.061	0.053	0.114
	Right Head Cheek	0.219	0.053	0.272
	Right Head Tilt	0.071	0.053	0.124

GSM with Wi-Fi:

Mode	Position	Reported SAR (W/kg)		Σ SAR
		GSM	Wi-Fi	< 1.6W/kg
GSM850	Left Head Cheek	0.385	0.347	0.732
	Left Head Tilt	0.288	0.347	0.635
	Right Head Cheek	0.548	0.347	0.895
	Right Head Tilt	0.252	0.347	0.599
PCS1900	Left Head Cheek	0.098	0.347	0.445
	Left Head Tilt	0.061	0.347	0.408
	Right Head Cheek	0.219	0.347	0.566
	Right Head Tilt	0.071	0.347	0.418

Note:

If the sum of the 1-g SAR measured for the simultaneously transmitting antennas is less than the SAR limit, SAR measurement for simultaneous transmission is not required.

Handheld Simultaneous SAR test exclusion considerations:

Evaluations for Simultaneous SAR, BT+GSM/3G					
Test Position	Back	Left	Right	Bottom	Top
Mode	Stand Alone 10-g SAR (W/Kg)				
GPRS 850	0.526	0.240	0.252	0.021	/
GPRS 1900	0.402	0.043	0.179	0.114	/
BT	0.022	0.022	0.100	0.100	0.004
	Σ 10-g SAR(W/Kg)				
GPRS 850 + BT	0.548	0.262	0.352	0.121	/
GPRS1900 + BT	0.424	0.065	0.279	0.214	/
Evaluations for Simultaneous SAR, Mobile Hot Spot Positions					
Test Position	Back	Left	Right	Bottom	Top
Mode	Stand Alone 10-g SAR (W/Kg)				
GPRS 850	0.526	0.240	0.252	0.021	/
GPRS 1900	0.402	0.043	0.179	0.114	/
Wi-Fi	0.141	0.100	0.141	0.100	0.026
	Σ 10-g SAR(W/Kg)				
GPRS 850 + Wi-Fi	0.667	0.34	0.393	0.121	/
GPRS 1900 + Wi-Fi	0.543	0.143	0.32	0.214	/

Note:

If the sum of the 10-g SAR measured for the simultaneously transmitting antennas is less than the SAR limit, SAR measurement for simultaneous transmission is not required.

11 Appendix A – Measurement Uncertainty

According to **IEEE1528:2013**, the uncertainty budget has been determined for the Head SAR measurement system and is given in the following Table.

SASY4 Uncertainty Budget								
Error Description	Uncertainty Value	Prob. Dist.	Div.	(c i) 1g	(c i) 10g	Std. Unc. (1g)	Std. Unc. (10g)	(v i) v _{eff}
Measurement System								
Probe Calibration	± 6.0 %	N	1	1	1	± 6.0 %	± 6.0 %	∞
Axial Isotropy	± 4.7 %	R	$\sqrt{3}$	$\sqrt{0.5}$	$\sqrt{0.5}$	± 1.9 %	± 1.9 %	∞
Hemispherical Isotropy	± 9.6 %	R	$\sqrt{3}$	$\sqrt{0.5}$	$\sqrt{0.5}$	± 3.9 %	± 3.9 %	∞
Boundary Effects	± 1.0 %	R	$\sqrt{3}$	1	1	± 0.6 %	± 0.6 %	∞
Linearity	± 4.7 %	R	$\sqrt{3}$	1	1	± 2.7 %	± 2.7 %	∞
System Detection Limits	± 1.0 %	R	$\sqrt{3}$	1	1	± 0.6 %	± 0.6 %	∞
Modulation response	± 4.0 %	R	$\sqrt{3}$	1	1	± 2.3 %	± 2.3 %	∞
Readout Electronics	± 0.3 %	N	1	1	1	± 0.3 %	± 0.3 %	∞
Response Time	± 0.8 %	R	$\sqrt{3}$	1	1	± 0.5 %	± 0.5 %	∞
Integration Time	± 2.6 %	R	$\sqrt{3}$	1	1	± 1.5 %	± 1.5 %	∞
RF Ambient Noise	± 3.0 %	R	$\sqrt{3}$	1	1	± 1.7 %	± 1.7 %	∞
RF Ambient reflection	± 3.0 %	R	$\sqrt{3}$	1	1	± 1.7 %	± 1.7 %	∞
Probe Positioner	± 0.4 %	R	$\sqrt{3}$	1	1	± 0.2 %	± 0.2 %	∞
Probe Positioning	± 2.9 %	R	$\sqrt{3}$	1	1	± 1.7 %	± 1.7 %	∞
Max. SAR Eval.	± 1.0 %	R	$\sqrt{3}$	1	1	± 0.6 %	± 0.6 %	∞
Test Sample Related								
Device Positioning	± 2.9 %	N	1	1	1	± 2.9 %	± 2.9 %	145
Device Holder	± 3.6 %	N	1	1	1	± 3.6 %	± 2.6 %	5
SAR scaling	± 2.0 %	R	$\sqrt{3}$	1	1	± 1.2 %	± 1.2 %	∞
Phantom and tissue parameters								
Phantom Uncertainty	± 4.0 %	R	$\sqrt{3}$	1	1	± 2.3 %	± 2.3 %	∞
Uncertainty in SAR correction for deviations in permittivity and conductivity	± 2.0 %	N	1	1	0.84	± 2.0%	± 1.7%	∞
Liquid conductivity measurement	± 3.5 %	N	1	0.78	0.71	± 2.7%	± 2.5%	∞
Liquid permittivity measurement	± 2.0 %	N	1	0.23	0.26	± 0.5%	± 0.5%	∞
Liquid conductivity—temperature uncertainty	± 0.5 %	R	$\sqrt{3}$	0.78	0.71	± 0.2%	± 0.2%	∞
Liquid permittivity—temperature uncertainty	± 2.5 %	R	$\sqrt{3}$	0.23	0.26	± 0.3%	± 0.4%	∞
Combined Std. Uncertainty	-	-	-	-	-	± 10.7 %	± 10.6 %	330
Expanded uncertainty (95 % conf. interval)	-	RSS	-	-	-	± 21.4 %	± 20.8 %	-

According to **IEC62209-2:2010**, the uncertainty budget has been determined for the Body SAR measurement system and is given in the following Table.

SASY4 Uncertainty Budget								
Error Description	Uncertainty Value	Prob. Dist.	Div.	(c i) 1g	(c i) 10g	Std. Unc. (1g)	Std. Unc. (10g)	(v i) v _{eff}
Measurement System								
Probe Calibration	± 6.0 %	N	1	1	1	± 6.0 %	± 6.0 %	∞
Axial Isotropy	± 4.7 %	R	$\sqrt{3}$	1	1	± 1.9 %	± 1.9 %	∞
Linearity	± 4.7 %	R	$\sqrt{3}$	1	1	± 2.7 %	± 2.7 %	∞
Probe Modulation response	± 4.0 %	R	$\sqrt{3}$	1	1	± 2.3 %	± 2.3 %	∞
Detection Limits	± 1.0 %	R	$\sqrt{3}$	1	1	± 0.6 %	± 0.6 %	∞
Boundary Effects	± 1.0 %	R	$\sqrt{3}$	1	1	± 0.6 %	± 0.6 %	∞
Readout Electronics	± 0.3 %	N	1	1	1	± 0.3 %	± 0.3 %	∞
Response Time	± 0.8 %	R	$\sqrt{3}$	1	1	± 0.5 %	± 0.5 %	∞
Integration Time	± 2.6 %	R	$\sqrt{3}$	1	1	± 1.5 %	± 1.5 %	∞
RF Ambient Noise	± 3.0 %	R	$\sqrt{3}$	1	1	± 1.7 %	± 1.7 %	∞
RF Ambient reflection	± 3.0 %	R	$\sqrt{3}$	1	1	± 1.7 %	± 1.7 %	∞
Probe Positioner	± 0.4 %	R	$\sqrt{3}$	1	1	± 0.2 %	± 0.2 %	∞
Probe Positioning	± 2.9 %	R	$\sqrt{3}$	1	1	± 1.7 %	± 1.7 %	∞
Post-processing	± 1.0 %	R	$\sqrt{3}$	1	1	± 0.6 %	± 0.6 %	∞
Test Sample Related								
Device Positioning	± 2.9 %	N	1	1	1	± 2.9 %	± 2.9 %	145
Device Holder	± 3.6 %	N	1	1	1	± 3.6 %	± 2.6 %	5
Power scaling	± 2.0 %	R	$\sqrt{3}$	1	1	± 1.2 %	± 1.2 %	∞
Power Drift	± 5.0 %	R	$\sqrt{3}$	1	1	± 2.9 %	± 2.9 %	∞
Phantom and Setup								
Phantom Uncertainty	± 4.0 %	R	$\sqrt{3}$	1	1	± 2.3 %	± 2.3 %	∞
Algorithm for correcting SAR for deviations in permittivity and conductivity	± 2.0 %	N	1	1	0.84	± 2.0%	± 1.7%	∞
Liquid conductivity (meas.)	± 3.5 %	N	1	0.78	0.71	± 2.7%	± 2.5%	
Liquid permittivity (meas.)	± 2.0 %	N	1	0.23	0.26	± 0.5%	± 0.5%	
Liquid conductivity—temperature uncertainty	± 0.5 %	R	$\sqrt{3}$	0.78	0.71	± 0.2%	± 0.2%	
Liquid permittivity—temperature uncertainty	± 2.5 %	R	$\sqrt{3}$	0.23	0.26	± 0.3%	± 0.4%	
Combined Std. Uncertainty		RSS	-	-	-	± 10.4 %	± 10.3 %	330
Expanded uncertainty (95 % conf. interval)	-	-	-	-	-	± 20.8 %	± 20.6 %	-

12 Appendix B – Probe Calibration Certificates

**Calibration Laboratory of
Schmid & Partner
Engineering AG**
Zeughausstrasse 43, 8004 Zurich, Switzerland



S Schweizerischer Kalibrierdienst
C Service suisse d'étalonnage
S Servizio svizzero di taratura
S Swiss Calibration Service

Accredited by the Swiss Accreditation Service (SAS)
The Swiss Accreditation Service is one of the signatories to the EA
Multilateral Agreement for the recognition of calibration certificates

Accreditation No.: **SCS 108**

Client **BACL**

Certificate No: **ET3-1604_Aug14**

CALIBRATION CERTIFICATE

Object: **ET3DV6 - SN:1604**

Calibration procedure(s): **QA CAL-01.v9, QA CAL-12.v9, QA CAL-23.v5, QA CAL-25.v6
Calibration procedure for dosimetric E-field probes**

Calibration date: **August 19, 2014**

This calibration certificate documents the traceability to national standards, which realize the physical units of measurements (SI).
The measurements and the uncertainties with confidence probability are given on the following pages and are part of the certificate.

All calibrations have been conducted in the closed laboratory facility: environment temperature (22 ± 3)°C and humidity < 70%.

Calibration Equipment used (M&TE critical for calibration)

Primary Standards	ID	Cal Date (Certificate No.)	Scheduled Calibration
Power meter E4419B	GB41293874	03-Apr-14 (No. 217-01911)	Apr-15
Power sensor E4412A	MY41498057	03-Apr-14 (No. 217-01911)	Apr-15
Reference 3 dB Attenuator	SN: S5054 (3c)	03-Apr-14 (No. 217-01915)	Apr-15
Reference 20 dB Attenuator	SN: S5277 (20x)	03-Apr-14 (No. 217-01919)	Apr-15
Reference 30 dB Attenuator	SN: S5129 (30b)	03-Apr-14 (No. 217-01920)	Apr-15
Reference Probe ES3DV2	SN: 3013	30-Dec-13 (No. ES3-3013_Dec13)	Dec-14
DAE4	SN: 660	13-Dec-13 (No. DAE4-660_Dec13)	Dec-14
Secondary Standards	ID	Check Date (in house)	Scheduled Check
RF generator HP 8648C	US3642U01700	4-Aug-99 (in house check Apr-13)	In house check: Apr-16
Network Analyzer HP 8753E	US37390585	18-Oct-01 (in house check Oct-13)	In house check: Oct-14

	Name	Function	Signature
Calibrated by:	Jeton Kastrali	Laboratory Technician	
Approved by:	Katja Pokovic	Technical Manager	

Issued: August 20, 2014

This calibration certificate shall not be reproduced except in full without written approval of the laboratory.

Certificate No: ET3-1604_Aug14

Page 1 of 11

**Calibration Laboratory of
Schmid & Partner
Engineering AG**
Zeughausstrasse 43, 8004 Zurich, Switzerland



S Schweizerischer Kalibrierdienst
S Service suisse d'étalonnage
S Servizio svizzero di taratura
S Swiss Calibration Service

Accredited by the Swiss Accreditation Service (SAS)
The Swiss Accreditation Service is one of the signatories to the EA
Multilateral Agreement for the recognition of calibration certificates

Accreditation No.: **SCS 108**

Glossary:

TSL	tissue simulating liquid
NORM _{x,y,z}	sensitivity in free space
ConvF	sensitivity in TSL / NORM _{x,y,z}
DCP	diode compression point
CF	crest factor (1/duty_cycle) of the RF signal
A, B, C, D	modulation dependent linearization parameters
Polarization φ	φ rotation around probe axis
Polarization ϑ	ϑ rotation around an axis that is in the plane normal to probe axis (at measurement center), i.e., $\vartheta = 0$ is normal to probe axis
Connector Angle	information used in DASY system to align probe sensor X to the robot coordinate system

Calibration is Performed According to the Following Standards:

- IEEE Std 1528-2013, "IEEE Recommended Practice for Determining the Peak Spatial-Averaged Specific Absorption Rate (SAR) in the Human Head from Wireless Communications Devices: Measurement Techniques", June 2013
- IEC 62209-1, "Procedure to measure the Specific Absorption Rate (SAR) for hand-held devices used in close proximity to the ear (frequency range of 300 MHz to 3 GHz)", February 2005

Methods Applied and Interpretation of Parameters:

- NORM_{x,y,z}**: Assessed for E-field polarization $\vartheta = 0$ ($f \leq 900$ MHz in TEM-cell; $f > 1800$ MHz: R22 waveguide). NORM_{x,y,z} are only intermediate values, i.e., the uncertainties of NORM_{x,y,z} does not affect the E²-field uncertainty inside TSL (see below ConvF).
- NORM(f)_{x,y,z}** = NORM_{x,y,z} * frequency_response (see Frequency Response Chart). This linearization is implemented in DASY4 software versions later than 4.2. The uncertainty of the frequency response is included in the stated uncertainty of ConvF.
- DCP_{x,y,z}**: DCP are numerical linearization parameters assessed based on the data of power sweep with CW signal (no uncertainty required). DCP does not depend on frequency nor media.
- PAR**: PAR is the Peak to Average Ratio that is not calibrated but determined based on the signal characteristics
- A_{x,y,z}; B_{x,y,z}; C_{x,y,z}; D_{x,y,z}; VR_{x,y,z}**: A, B, C, D are numerical linearization parameters assessed based on the data of power sweep for specific modulation signal. The parameters do not depend on frequency nor media. VR is the maximum calibration range expressed in RMS voltage across the diode.
- ConvF and Boundary Effect Parameters**: Assessed in flat phantom using E-field (or Temperature Transfer Standard for $f \leq 800$ MHz) and inside waveguide using analytical field distributions based on power measurements for $f > 800$ MHz. The same setups are used for assessment of the parameters applied for boundary compensation (alpha, depth) of which typical uncertainty values are given. These parameters are used in DASY4 software to improve probe accuracy close to the boundary. The sensitivity in TSL corresponds to NORM_{x,y,z} * ConvF whereby the uncertainty corresponds to that given for ConvF. A frequency dependent ConvF is used in DASY version 4.4 and higher which allows extending the validity from ± 50 MHz to ± 100 MHz.
- Spherical isotropy (3D deviation from isotropy)**: in a field of low gradients realized using a flat phantom exposed by a patch antenna.
- Sensor Offset**: The sensor offset corresponds to the offset of virtual measurement center from the probe tip (on probe axis). No tolerance required.
- Connector Angle**: The angle is assessed using the information gained by determining the NORM_x (no uncertainty required).

ET3DV6 - SN:1604

August 19, 2014

Probe ET3DV6

SN:1604

Manufactured: July 30, 2001
Calibrated: August 19, 2014

Calibrated for DASY/EASY Systems
(Note: non-compatible with DASY2 system!)

ET3DV6- SN:1604

August 19, 2014

DASY/EASY - Parameters of Probe: ET3DV6 - SN:1604**Basic Calibration Parameters**

	Sensor X	Sensor Y	Sensor Z	Unc (k=2)
Norm ($\mu\text{V}/(\text{V}/\text{m})^2$) ^A	1.89	1.80	1.82	$\pm 10.1\%$
DCP (mV) ^B	98.2	97.9	97.5	

Modulation Calibration Parameters

UID	Communication System Name		A dB	B dB $\sqrt{\mu\text{V}}$	C	D dB	VR mV	Unc ^E (k=2)
0	CW	X	0.0	0.0	1.0	0.00	262.1	$\pm 3.5\%$
		Y	0.0	0.0	1.0		265.6	
		Z	0.0	0.0	1.0		252.9	

The reported uncertainty of measurement is stated as the standard uncertainty of measurement multiplied by the coverage factor $k=2$, which for a normal distribution corresponds to a coverage probability of approximately 95%.

^A The uncertainties of NormX,Y,Z do not affect the E²-field uncertainty inside TSL (see Pages 5 and 6).

^B Numerical linearization parameter: uncertainty not required.

^E Uncertainty is determined using the max. deviation from linear response applying rectangular distribution and is expressed for the square of the field value.

ET3DV6- SN:1604

August 19, 2014

DASY/EASY - Parameters of Probe: ET3DV6 - SN:1604

Calibration Parameter Determined in Head Tissue Simulating Media

f (MHz) ^c	Relative Permittivity ^f	Conductivity (S/m) ^f	ConvF X	ConvF Y	ConvF Z	Alpha ^g	Depth ^g (mm)	Unct. (k=2)
450	43.5	0.87	7.42	7.42	7.42	0.24	2.71	± 13.3 %
600	42.7	0.88	7.16	7.16	7.16	0.19	2.18	± 13.3 %
835	41.5	0.90	6.55	6.55	6.55	0.29	2.74	± 12.0 %
900	41.5	0.97	6.40	6.40	6.40	0.27	2.91	± 12.0 %
1750	40.1	1.37	5.38	5.38	5.38	0.80	2.04	± 12.0 %
1900	40.0	1.40	5.13	5.13	5.13	0.80	1.96	± 12.0 %
2450	39.2	1.80	4.56	4.56	4.56	0.80	1.71	± 12.0 %

^c Frequency validity above 300 MHz of ± 100 MHz only applies for DASY v4.4 and higher (see Page 2), else it is restricted to ± 50 MHz. The uncertainty is the RSS of the ConvF uncertainty at calibration frequency and the uncertainty for the indicated frequency band. Frequency validity below 300 MHz is ± 10 , 25, 40, 50 and 70 MHz for ConvF assessments at 30, 64, 128, 150 and 220 MHz respectively. Above 5 GHz frequency validity can be extended to ± 110 MHz.

^f At frequencies below 3 GHz, the validity of tissue parameters (ϵ and σ) can be relaxed to $\pm 10\%$ if liquid compensation formula is applied to measured SAR values. At frequencies above 3 GHz, the validity of tissue parameters (ϵ and σ) is restricted to $\pm 5\%$. The uncertainty is the RSS of the ConvF uncertainty for indicated target tissue parameters.

^g Alpha/Depth are determined during calibration. SPEAG warrants that the remaining deviation due to the boundary effect after compensation is always less than $\pm 1\%$ for frequencies below 3 GHz and below $\pm 2\%$ for frequencies between 3-6 GHz at any distance larger than half the probe tip diameter from the boundary.

ET3DV6- SN:1604

August 19, 2014

DASY/EASY - Parameters of Probe: ET3DV6 - SN:1604

Calibration Parameter Determined in Body Tissue Simulating Media

f (MHz) ^C	Relative Permittivity ^F	Conductivity (S/m) ^F	ConvF X	ConvF Y	ConvF Z	Alpha ^G	Depth ^G (mm)	Unct. (k=2)
450	56.7	0.94	7.73	7.73	7.73	0.16	1.96	± 13.3 %
600	56.1	0.95	7.20	7.20	7.20	0.07	1.20	± 13.3 %
835	55.2	0.97	6.27	6.27	6.27	0.29	3.00	± 12.0 %
900	55.0	1.05	6.18	6.18	6.18	0.63	1.82	± 12.0 %
1750	53.4	1.49	4.89	4.89	4.89	0.80	2.37	± 12.0 %
1900	53.3	1.52	4.68	4.68	4.68	0.80	2.45	± 12.0 %
2450	52.7	1.95	4.24	4.24	4.24	0.60	1.17	± 12.0 %

^C Frequency validity above 300 MHz of ± 100 MHz only applies for DASY v4.4 and higher (see Page 2), else it is restricted to ± 50 MHz. The uncertainty is the RSS of the ConvF uncertainty at calibration frequency and the uncertainty for the indicated frequency band. Frequency validity below 300 MHz is ± 10, 25, 40, 50 and 70 MHz for ConvF assessments at 30, 64, 128, 150 and 220 MHz respectively. Above 5 GHz frequency validity can be extended to ± 110 MHz.

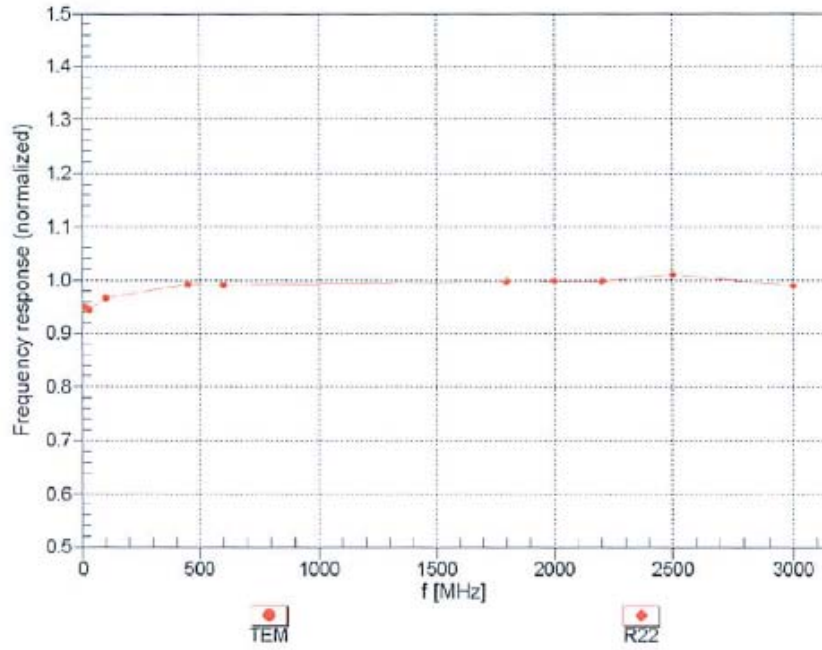
^F At frequencies below 3 GHz, the validity of tissue parameters (ϵ and σ) can be relaxed to ± 10% if liquid compensation formula is applied to measured SAR values. At frequencies above 3 GHz, the validity of tissue parameters (ϵ and σ) is restricted to ± 5%. The uncertainty is the RSS of the ConvF uncertainty for indicated target tissue parameters.

^G Alpha/Depth are determined during calibration. SPEAG warrants that the remaining deviation due to the boundary effect after compensation is always less than ± 1% for frequencies below 3 GHz and below ± 2% for frequencies between 3-6 GHz at any distance larger than half the probe tip diameter from the boundary.

ET3DV6- SN:1604

August 19, 2014

Frequency Response of E-Field (TEM-Cell: ifi110 EXX, Waveguide: R22)

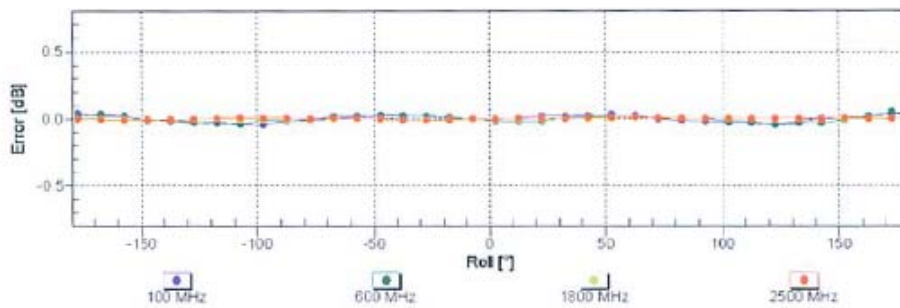
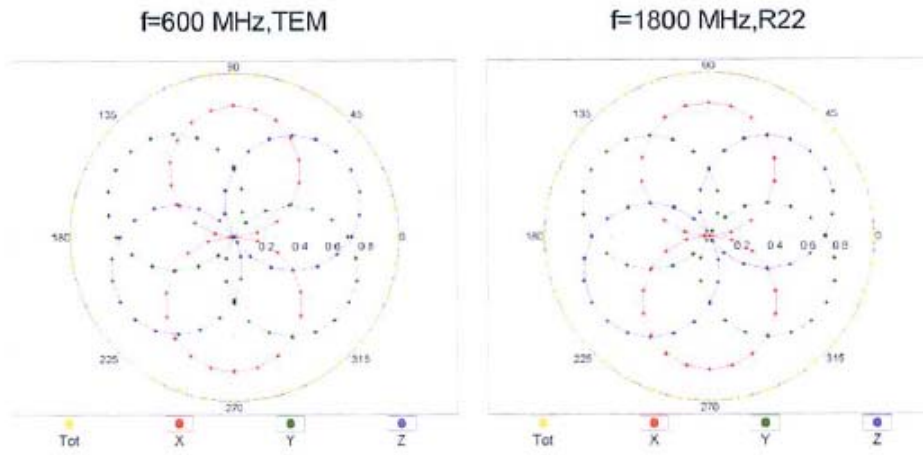


Uncertainty of Frequency Response of E-field: $\pm 6.3\%$ (k=2)

ET3DV6- SN:1604

August 19, 2014

Receiving Pattern (ϕ), $\theta = 0^\circ$

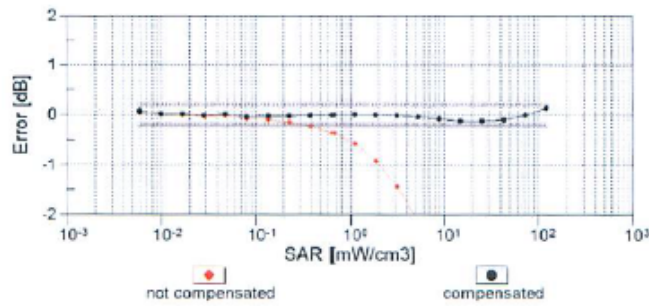
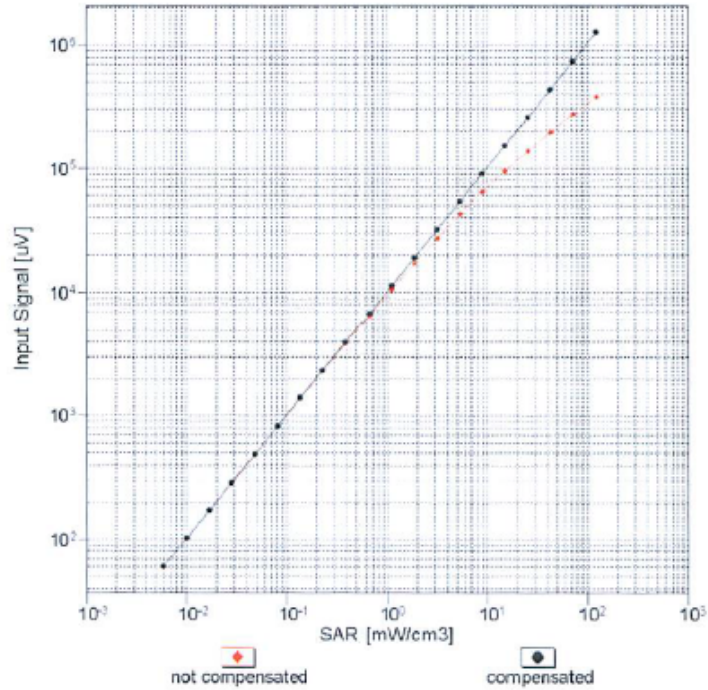


Uncertainty of Axial Isotropy Assessment: $\pm 0.5\%$ (k=2)

ET3DV6- SN:1604

August 19, 2014

Dynamic Range $f(\text{SAR}_{\text{head}})$ (TEM cell, $f_{\text{eval}} = 1900 \text{ MHz}$)

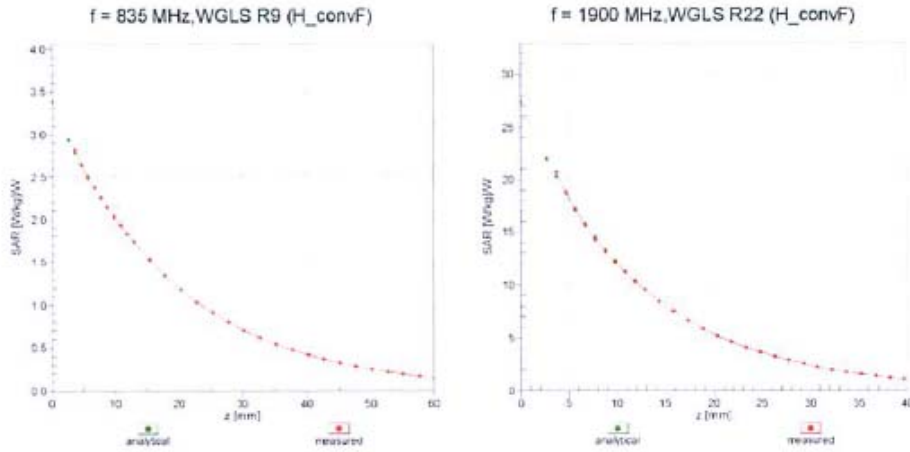


Uncertainty of Linearity Assessment: $\pm 0.6\%$ ($k=2$)

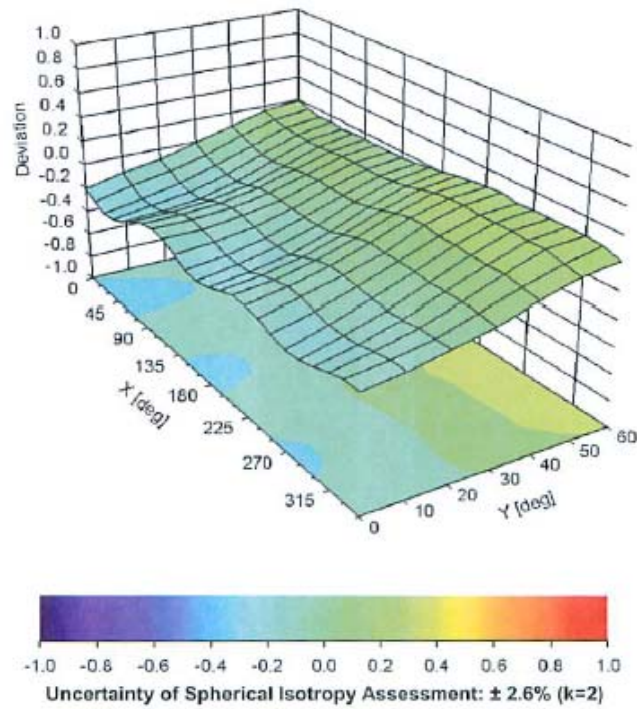
ET3DV6- SN:1604

August 19, 2014

Conversion Factor Assessment



Deviation from Isotropy in Liquid Error (ϕ, θ), $f = 900$ MHz



ET3DV6- SN:1604

August 19, 2014

DASY/EASY - Parameters of Probe: ET3DV6 - SN:1604**Other Probe Parameters**

Sensor Arrangement	Triangular
Connector Angle (°)	-117.4
Mechanical Surface Detection Mode	enabled
Optical Surface Detection Mode	enabled
Probe Overall Length	337 mm
Probe Body Diameter	10 mm
Tip Length	10 mm
Tip Diameter	6.8 mm
Probe Tip to Sensor X Calibration Point	2.7 mm
Probe Tip to Sensor Y Calibration Point	2.7 mm
Probe Tip to Sensor Z Calibration Point	2.7 mm
Recommended Measurement Distance from Surface	4 mm

13 Appendix C – Dipole Calibration Certificates

NCL CALIBRATION LABORATORIES

Calibration File No: DC-1604
Project Number: BACL-dipole cal-5780

CERTIFICATE OF CALIBRATION

It is certified that the equipment identified below has been calibrated in the
NCL CALIBRATION LABORATORIES by qualified personnel following recognized
procedures and using transfer standards traceable to NRC/NIST.

Validation Dipole
835MHz Head & Body

Manufacturer: APREL Laboratories
Part number: ALS-D-835-S-2
Frequency: 835MHz
Serial No: 180-00564

Customer: Bay Area Compliance (USA)

Calibrated: 27th October 2014
Released on: 30th October 2014

This Calibration Certificate is Incomplete Unless Accompanied with the Calibration Results Summary

Released By: _____



Art Brennan, Quality Manager

NCL CALIBRATION LABORATORIES

303 Terry Fox Drive, Suite 102
Kanata, Ontario
CANADA, K2K 3J1

Division of APREL
TEL: (613) 435-8300
FAX: (613) 435-8306

NCL Calibration Laboratories

Division of APREL Inc.

Conditions

Dipole 180-00565 was a recalibration.

Ambient Temperature of the Laboratory: 22 °C +/- 0.5°C
Temperature of the Tissue: 21 °C +/- 0.5°C

Attestation

The below named signatories have conducted the calibration and review of the data which is presented in this calibration report.

We the undersigned attest that to the best of our knowledge the calibration of this subject has been accurately conducted and that all information contained within the results pages have been reviewed for accuracy.



Art Brennan, Quality Manager



Maryna Nesterova Calibration Engineer

Primary Measurement Standards

Instrument	Serial Number	Cal due date
Tektronix USB Power Meter	11C940	May 14, 2015
Network Analyzer Anritsu 37347C	002106	Feb. 20, 2015

This page has been reviewed for content and attested to by signature within this document.

NCL Calibration Laboratories

Division of APREL Inc.

Calibration Results Summary

The following results relate the Calibrated Dipole and should be used as a quick reference for the user.

Mechanical Dimensions and Mechanical Verification

APREL Length	APREL Height	Measured Length	Measured Height
161.0 mm	89.8 mm	161.0 mm	89.8 mm

Electrical Specification 835MHz

Tissue Type	Return Loss:	Impedance:	SWR:
Head	-28.171 dB	53.551 Ω	1.084 U
Body	-22.838 dB	57.573 Ω	1.1206 U

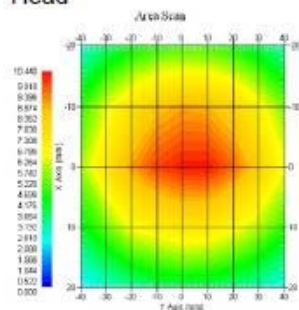
System Validation Results

Tissue	Frequency	1 Gram	10 Gram
Head	835 MHz	9.78	6.21
Body	835 MHz	9.76	6.27

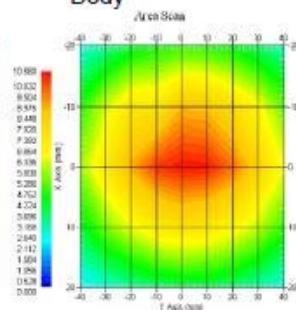
Tissue Type	Measured Epsilon (permittivity)	Measured Sigma (conductivity)
Head	43.35	0.94
Body	55.46	1.00

835MHz

Head



Body



This page has been reviewed for content and attested to by signature within this document.

3

NCL Calibration Laboratories

Division of APREL Inc.

Introduction

This Calibration Report has been produced in line with the SSI Dipole Calibration Procedure SSI-TP-018-ALSAS. The results contained within this report are for Validation Dipole 180-00565. The calibration routine consisted of a three-step process. Step 1 was a mechanical verification of the dipole to ensure that it meets the mechanical specifications. Step 2 was an Electrical Calibration for the Validation Dipole, where the SWR, Impedance, and the Return loss were assessed. Step 3 involved a System Validation using the ALSAS-10U, along with APREL E-020 30 MHz to 6 GHz E-Field Probe Serial Number 225.

References

- SSI-TP-018-ALSAS Dipole Calibration Procedure
- SSI-TP-016 Tissue Calibration Procedure
- IEEE 1528:2013 "Recommended Practice for Determining the Peak Spatial-Average Specific Absorption Rate (SAR) in the Human Head from Wireless Communications Devices: Measurement Techniques"
- IEC-62209-1:2006 "Human exposure to radio frequency fields from hand-held and body-mounted wireless communication devices – Human models, instrumentation, and procedures"
Part 1: "Procedure to determine the Specific Absorption Rate (SAR) for hand-held devices used in close proximity of the ear (frequency range of 300 MHz to 3 GHz)"
- IEC-62209-2:2010 "Human exposure to radio frequency fields from hand-held and body-mounted wireless communication devices – Human models, instrumentation, and procedures"
Part 2: "Procedure to determine the Specific Absorption Rate (SAR) for hand-held devices used in close proximity of the ear (frequency range of 30 MHz to 6 GHz)"
- D28-002 Procedure for validation of SAR system using a dipole

Conditions

Ambient Temperature of the Laboratory: 22 °C +/- 0.5°C
Temperature of the Tissue: 21 °C +/- 0.5°C

Dipole Calibration uncertainty

The calibration uncertainty for the dipole is made up of various parameters presented below.

Mechanical	1%
Positioning Error	1.22%
Electrical	1.7%
Tissue	2.2%
Dipole Validation	2.2%
TOTAL	8.32% (16.64% K=2)

4

This page has been reviewed for content and attested to by signature within this document.

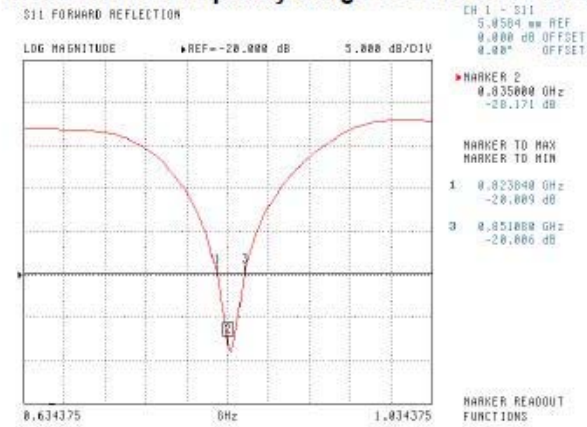
NCL Calibration Laboratories
 Division of APREL Inc.

Electrical Calibration

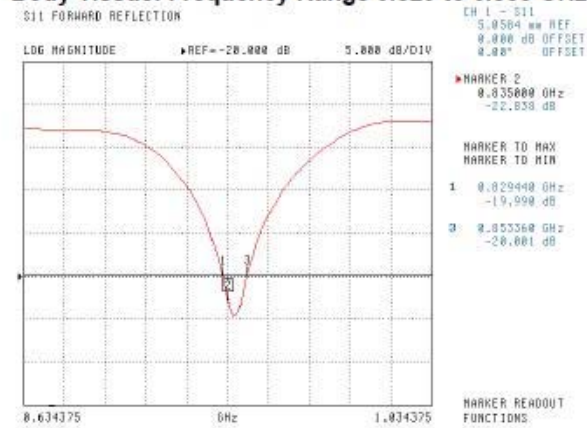
Electrical Specification 835MHz

Forward Reflection

Head Tissue: Frequency Range 0.823 to 0.851 GHz



Body Tissue: Frequency Range 0.829 to 0.853 GHz



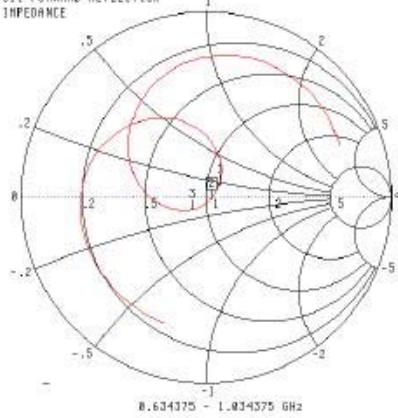
This page has been reviewed for content and attested to by signature within this document.

NCL Calibration Laboratories
 Division of APREL Inc.

**Electrical Specification 835MHz
 Impedance**

Head Tissue

S11 FORWARD REFLECTION
 IMPEDANCE



CH 1 - S11
 5.0504 m REF
 0.000 dB OFFSET
 0.00° OFFSET

MARKER 2
 0.835000 GHz
 33.551 Ω
 -81.1951 jΩ

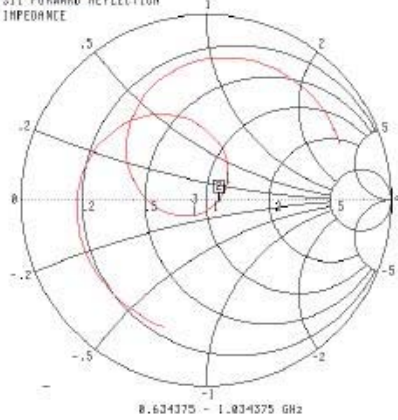
MARKER TO MAX
 MARKER TO MIN

- 1 0.823640 GHz
 57.578 Ω
 -7.949 jΩ
- 3 0.851800 GHz
 42.678 Ω
 -6.824 jΩ

MARKER READOUT
 FUNCTIONS

Body Tissue

S11 FORWARD REFLECTION
 IMPEDANCE



CH 1 - S11
 5.0504 m REF
 0.000 dB OFFSET
 0.00° OFFSET

MARKER 2
 0.835000 GHz
 37.573 Ω
 -913.825 jΩ

MARKER TO MAX
 MARKER TO MIN

- 1 0.829440 GHz
 68.450 Ω
 3.856 jΩ
- 3 0.855360 GHz
 44.122 Ω
 -7.473 jΩ

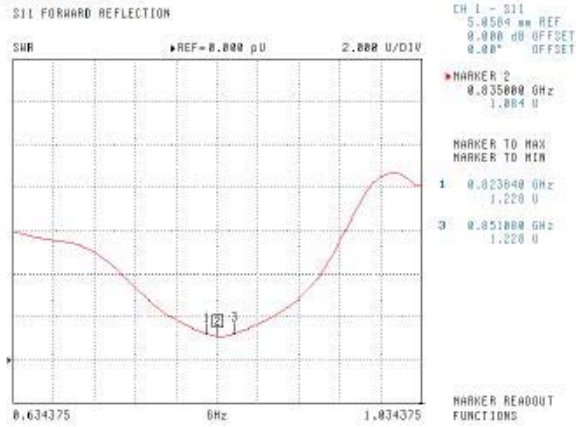
MARKER READOUT
 FUNCTIONS

This page has been reviewed for content and attested to by signature within this document.

NCL Calibration Laboratories
 Division of APREL Inc.

**Electrical Specification 835MHz
 Standing Wave Ratio**

Head Tissue



Body Tissue



This page has been reviewed for content and attested to by signature within this document.

NCL CALIBRATION LABORATORIES

Calibration File No: DC-1606
Project Number: BACL-dipole-cal-5780

CERTIFICATE OF CALIBRATION

It is certified that the equipment identified below has been calibrated in the
NCL CALIBRATION LABORATORIES by qualified personnel following recognized
procedures and using transfer standards traceable to NRC/NIST.

Validation Dipole
1900MHz Head & Body

Manufacturer: APREL Laboratories
Part number: ALS-D-1900-S-2
Frequency: 1900MHZ
Serial No: 210-00715

Customer: Bay Area Compliance (USA)

Calibrated: 27th October 2014
Released on: 30th October 2014

This Calibration Certificate is Incomplete Unless Accompanied with the Calibration Results Summary

Released By: _____



Art Brennan, Quality Manager

NCL CALIBRATION LABORATORIES

303 Terry Fox Drive, Suite 102
Kanata, Ontario
CANADA K2K 3J1

Division of APREL
TEL: (613) 435-8300
FAX: (613) 435-8306

NCL Calibration Laboratories

Division of APREL Inc.

Conditions

Dipole 210-00715 was a recalibration.

Ambient Temperature of the Laboratory: 22 °C +/- 0.5°C
Temperature of the Tissue: 21 °C +/- 0.5°C

Attestation

The below named signatories have conducted the calibration and review of the data which is presented in this calibration report.

We the undersigned attest that to the best of our knowledge the calibration of this subject has been accurately conducted and that all information contained within the results pages have been reviewed for accuracy.



Art Brennan, Quality Manager



Maryna Nesterova Calibration Engineer

Primary Measurement Standards

Instrument	Serial Number	Cal due date
Tektronix USB Power Meter	11C940	May 14, 2015
Network Analyzer Anritsu 37347C	002106	Feb. 20, 2015

This page has been reviewed for content and attested to by signature within this document.

NCL Calibration Laboratories

Division of APREL Inc.

Calibration Results Summary

The following results relate the Calibrated Dipole and should be used as a quick reference for the user.

Mechanical Dimensions and Mechanical Verification

APREL Length	APREL Height	Measured Length	Measured Height
68.0 mm	39.5 mm	67.1 mm	38.9 mm

Electrical Specification 1900MHz

Tissue Type	Return Loss:	Impedance:	SWR:
Head	-29.341 dB	51.897 Ω	1.071 U
Body	-23.129 dB	54.275 Ω	1.139 U

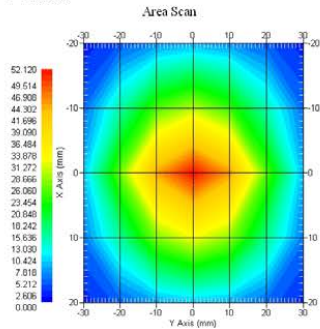
System Validation Results

Tissue	Frequency	1 Gram	10 Gram
Head	1900 MHz	41.28	20.9
Body	1900 MHz	40.03	20.41

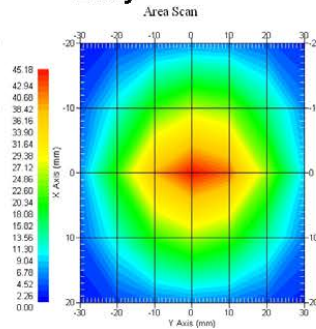
Tissue Type	Measured Epsilon (permittivity)	Measured Sigma (conductivity)
Head	40.27	1.44
Body	52.63	1.46

1900 MHz

Head



Body



This page has been reviewed for content and attested to by signature within this document.

NCL Calibration Laboratories

Division of APREL Inc.

Introduction

This Calibration Report has been produced in line with the SSI Dipole Calibration Procedure SSI-TP-018-ALSAS. The results contained within this report are for Validation Dipole 210-00715. The calibration routine consisted of a three-step process. Step 1 was a mechanical verification of the dipole to ensure that it meets the mechanical specifications. Step 2 was an Electrical Calibration for the Validation Dipole, where the SWR, Impedance, and the Return loss were assessed. Step 3 involved a System Validation using the ALSAS-10U, along with APREL E-020 30 MHz to 6 GHz E-Field Probe Serial Number 225.

References

- SSI-TP-018-ALSAS Dipole Calibration Procedure
- SSI-TP-016 Tissue Calibration Procedure
- IEEE 1528:2013 "Recommended Practice for Determining the Peak Spatial-Average Specific Absorption Rate (SAR) in the Human Head from Wireless Communications Devices: Measurement Techniques"
- IEC-62209-1:2006 "Human exposure to radio frequency fields from hand-held and body-mounted wireless communication devices – Human models, instrumentation, and procedures"
Part 1: "Procedure to determine the Specific Absorption Rate (SAR) for hand-held devices used in close proximity of the ear (frequency range of 300 MHz to 3 GHz)"
- IEC-62209-2:2010 "Human exposure to radio frequency fields from hand-held and body-mounted wireless communication devices – Human models, instrumentation, and procedures"
Part 2: "Procedure to determine the Specific Absorption Rate (SAR) for hand-held devices used in close proximity of the ear (frequency range of 30 MHz to 6 GHz)"
- D28-002 Procedure for validation of SAR system using a dipole

Conditions

Ambient Temperature of the Laboratory: 22 °C +/- 0.5°C
Temperature of the Tissue: 21 °C +/- 0.5°C

Dipole Calibration uncertainty

The calibration uncertainty for the dipole is made up of various parameters presented below.

Mechanical	1%
Positioning Error	1.22%
Electrical	1.7%
Tissue	2.2%
Dipole Validation	2.2%
TOTAL	8.32% (16.64% K=2)

This page has been reviewed for content and attested to by signature within this document.

4

NCL Calibration Laboratories

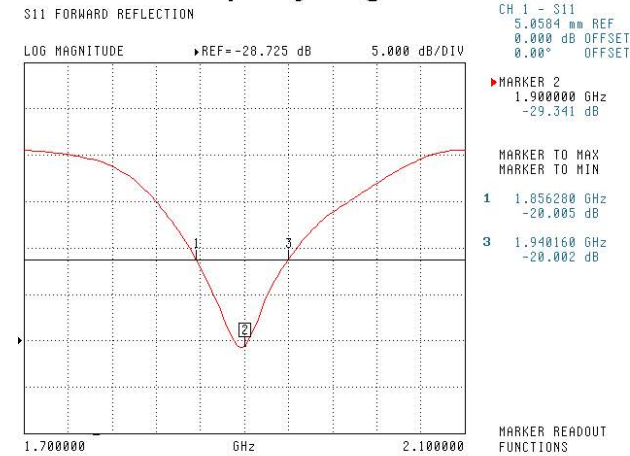
Division of APREL Inc.

Electrical Calibration

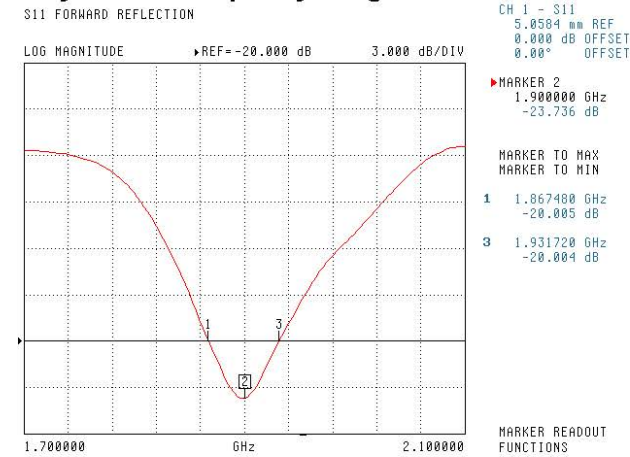
Electrical Specification 1900MHz

Forward Reflection

Head Tissue: Frequency Range 1.856 to 1.940 GHz



Body Tissue: Frequency Range 1.867 to 1.931 GHz



This page has been reviewed for content and attested to by signature within this document.

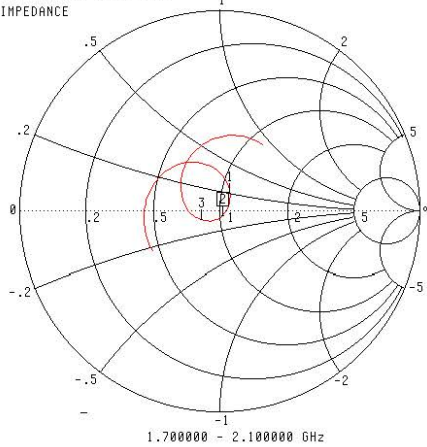
NCL Calibration Laboratories

Division of APREL Inc.

**Electrical Specification 1900MHz
Impedance**

Head Tissue

S11 FORWARD REFLECTION
IMPEDANCE



CH 1 - S11
5.0584 mm REF
0.000 dB OFFSET
0.00° OFFSET

▶ MARKER 2
1.900000 GHz
51.897 Ω
-2.847 jΩ

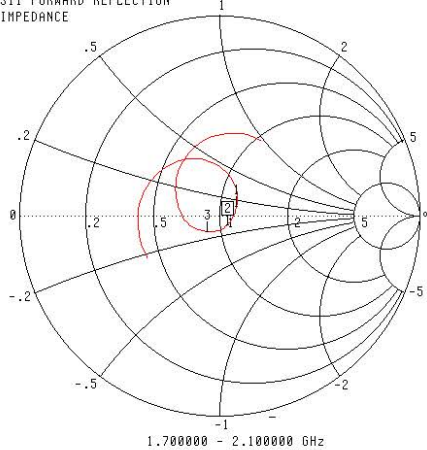
MARKER TO MAX
MARKER TO MIN

1 1.856200 GHz
55.876 Ω
9.248 jΩ
3 1.940160 GHz
41.753 Ω
-4.038 jΩ

MARKER READOUT
FUNCTIONS

Body Tissue

S11 FORWARD REFLECTION
IMPEDANCE



CH 1 - S11
5.0584 mm REF
0.000 dB OFFSET
0.00° OFFSET

▶ MARKER 2
1.900000 GHz
54.275 Ω
-5.222 jΩ

MARKER TO MAX
MARKER TO MIN

1 1.867480 GHz
59.473 Ω
5.466 jΩ
3 1.931720 GHz
44.123 Ω
-7.394 jΩ

MARKER READOUT
FUNCTIONS

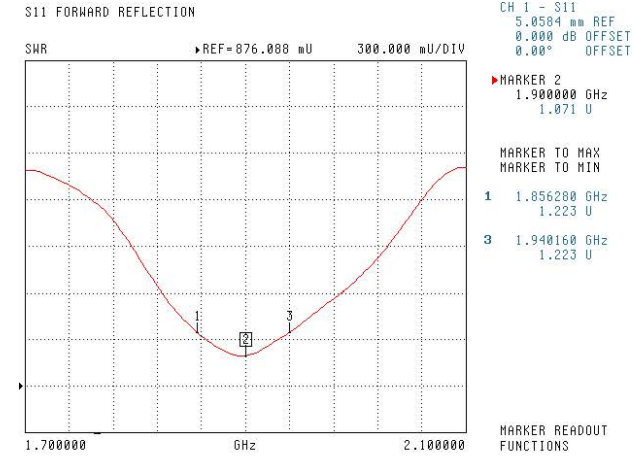
This page has been reviewed for content and attested to by signature within this document.

NCL Calibration Laboratories

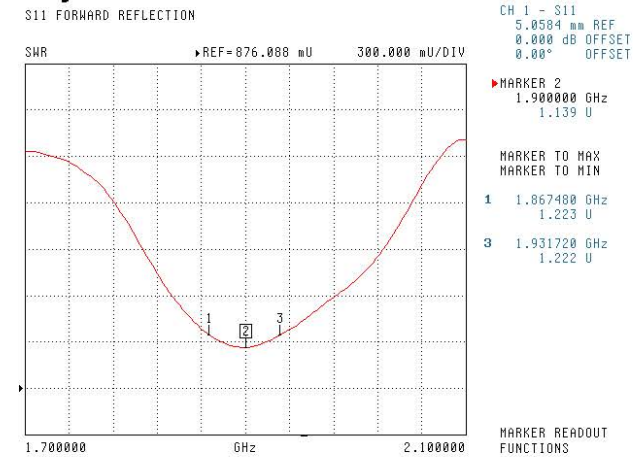
Division of APREL Inc.

**Electrical Specification 1900MHz
Standing Wave Ratio**

Head Tissue



Body Tissue



This page has been reviewed for content and attested to by signature within this document.

14 Appendix D - Test System Verifications Scans

Test Laboratory: Bay Area Compliance Lab Corp.(BACL)

System Performance Test (835 MHz Head)

DUT: Dipole 835 MHz; Type: D835V2; Serial: D835V2 - SN: 180-00564

Communication System: CW; Frequency: 835 MHz; Duty Cycle: 1:1
 Medium parameters used: $f = 835$ MHz; $\sigma = 0.91$ mho/m; $\epsilon_r = 42.9$; $\rho = 1000$ kg/m³
 Phantom section: Flat Section
 Measurement Standard: DASy4 (High Precision Assessment)

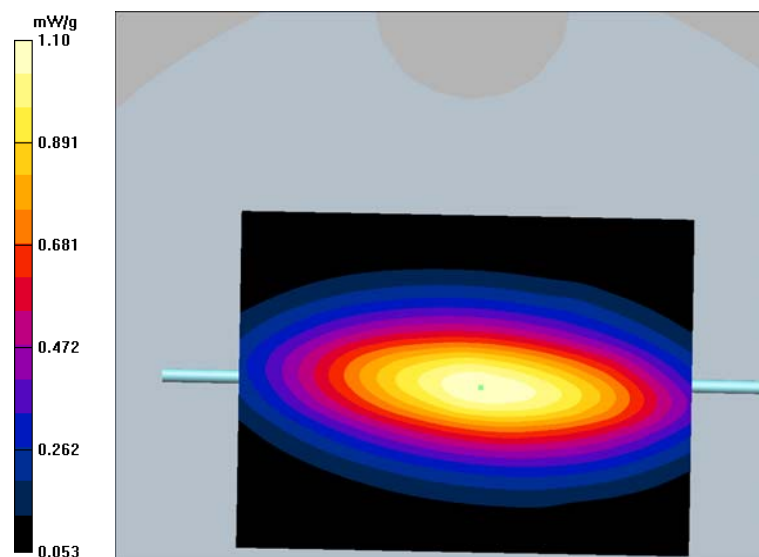
DASy4 Configuration:

- Probe: ET3DV6 - SN1604; ConvF(6.27, 6.27, 6.27); Calibrated: 8/19/2014
- Sensor-Surface: 4mm (Mechanical Surface Detection)
- Electronics: DAE3 Sn456; Calibrated: 8/13/2014
- Phantom: SAM with CRP; Type: Twin SAM; Serial: TP-1032
- Measurement SW: DASy4, V4.7 Build 80; Postprocessing SW: SEMCAD, V1.8 Build 186

835MHz Head system validation , Pin = 100 mW /Area Scan (91x121x1): Measurement grid: dx=10mm, dy=10mm
 Maximum value of SAR (interpolated) = 1.10 mW/g

835MHz Head system validation , Pin = 100 mW /Zoom Scan (7x7x7)/Cube 0: Measurement grid: dx=5mm, dy=5mm, dz=5mm
 Reference Value = 36.6 V/m; Power Drift = -0.019 dB
 Peak SAR (extrapolated) = 1.73 W/kg

SAR (1 g) = 1.01 mW/g; SAR (10 g) = 0.599 mW/g
 Maximum value of SAR (measured) = 1.10 mW/g



Test Laboratory: Bay Area Compliance Lab Corp.(BACL)**System Performance Test (835 MHz Body)****DUT: Dipole 835 MHz; Type: D835V2; Serial: D835V2 - SN: 180-00564**

Communication System: CW; Frequency: 835 MHz; Duty Cycle: 1:1
Medium parameters used: $f = 835$ MHz; $\sigma = 0.98$ mho/m; $\epsilon_r = 55.7$; $\rho = 1000$ kg/m³
Phantom section: Flat Section
Measurement Standard: DASYS4 (High Precision Assessment)

DASY4 Configuration:

- Probe: ET3DV6 - SN1604; ConvF(6.27, 6.27, 6.27); Calibrated: 8/19/2014
- Sensor-Surface: 4mm (Mechanical Surface Detection)
- Electronics: DAE3 Sn456; Calibrated: 8/13/2014
- Phantom: SAM with CRP; Type: Twin SAM; Serial: TP-1032
- Measurement SW: DASYS4, V4.7 Build 80; Postprocessing SW: SEMCAD, V1.8 Build 186

835MHz Body system validation, Pin = 100 mW /Area Scan (91x121x1): Measurement grid: dx=10mm, dy=10mm

Maximum value of SAR (interpolated) = 1.05 mW/g

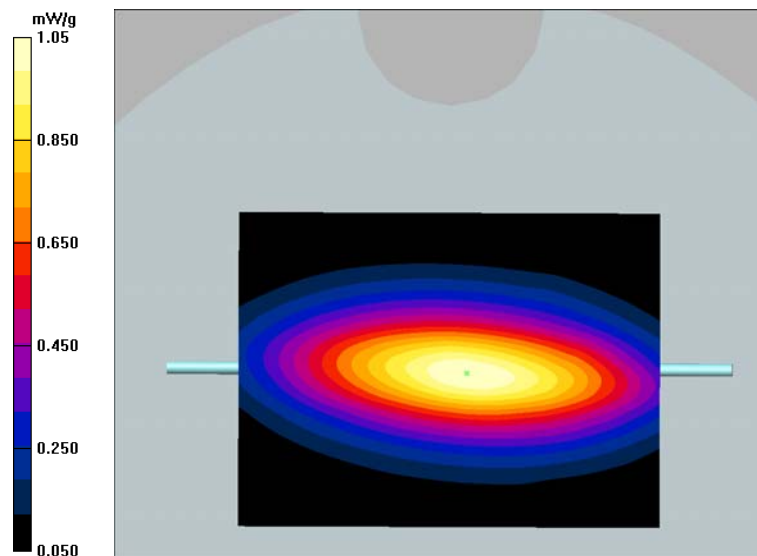
835MHz Body system, Pin = 100 mW /Zoom Scan (7x7x7)/Cube 0: Measurement grid: dx=5mm, dy=5mm, dz=5mm

Reference Value = 35.3 V/m; Power Drift = -0.277 dB

Peak SAR (extrapolated) = 1.62 W/kg

SAR (1 g) = 0.960 mW/g; SAR (10 g) = 0.571 mW/g

Maximum value of SAR (measured) = 1.05 mW/g



Test Laboratory: Bay Area Compliance Lab Corp. (BACL)

System Performance Test (1900 MHz Head)

DUT: Dipole 1900 MHz; Type: D1900V2; Serial: D1900V2 - SN: 210-00715

Communication System: CW; Frequency: 1900 MHz; Duty Cycle: 1:1
 Medium parameters used: $f = 1900 \text{ MHz}$; $\sigma = 1.41 \text{ mho/m}$; $\epsilon_r = 39.68$; $\rho = 1000 \text{ kg/m}^3$
 Phantom section: Flat Section
 Measurement Standard: DAS4 (High Precision Assessment)

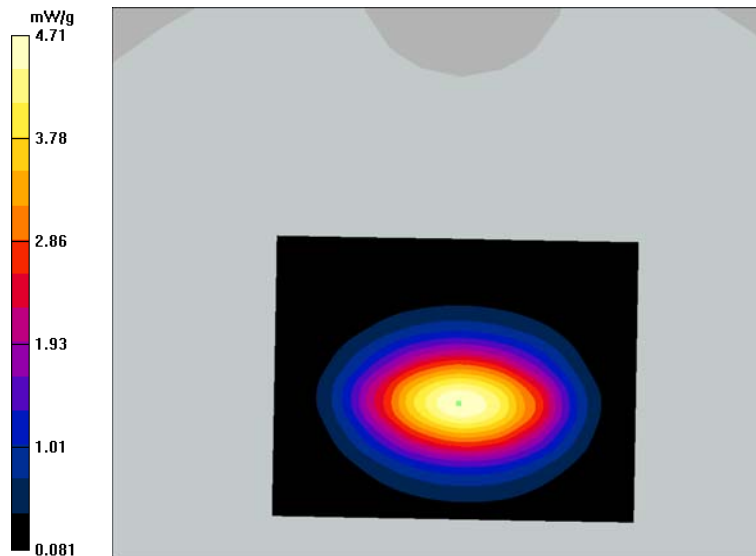
DASY4 Configuration:

- Probe: ET3DV6 - SN1604; ConvF(4.68, 4.68, 4.68); Calibrated: 8/19/2014
- Sensor-Surface: 4mm (Mechanical Surface Detection)
- Electronics: DAE3 Sn456; Calibrated: 8/13/2014
- Phantom: SAM with CRP; Type: Twin SAM; Serial: TP-1032
- Measurement SW: DAS4, V4.7 Build 80; Postprocessing SW: SEMCAD, V1.8 Build 186

1900MHz Head system validation , Pin = 100 mW /Area Scan (71x91x1): Measurement grid: $dx=10\text{mm}$, $dy=10\text{mm}$
 Maximum value of SAR (interpolated) = 4.70 mW/g

1900MHz Head system validation , Pin = 100 mW /Zoom Scan (7x7x7)/Cube 0: Measurement grid: $dx=5\text{mm}$, $dy=5\text{mm}$, $dz=5\text{mm}$
 Reference Value = 53.3 V/m; Power Drift = 0.212 dB
 Peak SAR (extrapolated) = 7.43 W/kg

SAR(1 g) = 4.2 mW/g; SAR(10 g) = 2.21 mW/g
 Maximum value of SAR (measured) = 4.71 mW/g



Test Laboratory: Bay Area Compliance Lab Corp. (BACL)

System Performance Test (1900 MHz Body)

DUT: Dipole 1900 MHz; Type: D1900V2; Serial: D1900V2 - SN: 210-00715

Communication System: CW; Frequency: 1900 MHz; Duty Cycle: 1:1
 Medium parameters used: $f = 1900 \text{ MHz}$; $\sigma = 1.54 \text{ mho/m}$; $\epsilon_r = 51.4$; $\rho = 1000 \text{ kg/m}^3$
 Phantom section: Flat Section
 Measurement Standard: DASYS4 (High Precision Assessment)

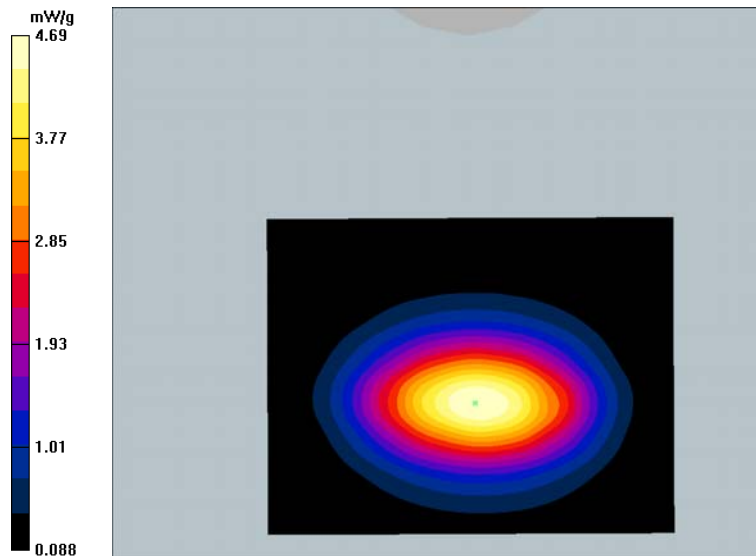
DASY4 Configuration:

- Probe: ET3DV6 - SN1604; ConvF(4.68, 4.68, 4.68); Calibrated: 8/19/2014
- Sensor-Surface: 4mm (Mechanical Surface Detection)
- Electronics: DAE3 Sn456; Calibrated: 8/13/2014
- Phantom: SAM with CRP; Type: Twin SAM; Serial: TP-1032
- Measurement SW: DASYS4, V4.7 Build 80; Postprocessing SW: SEMCAD, V1.8 Build 186

1900MHz Body system validation , Pin = 100 mW /Area Scan (71x91x1): Measurement grid: $dx=10\text{mm}$, $dy=10\text{mm}$
 Maximum value of SAR (interpolated) = 4.75 mW/g

1900MHz Body system validation , Pin = 100 mW /Zoom Scan (7x7x7)/Cube 0: Measurement grid: $dx=5\text{mm}$, $dy=5\text{mm}$, $dz=5\text{mm}$
 Reference Value = 55.7 V/m; Power Drift = 0.224 dB
 Peak SAR (extrapolated) = 6.53 W/kg

SAR(1 g) = 4.09 mW/g; SAR(10 g) = 2.21 mW/g
 Maximum value of SAR (measured) = 4.69 mW/g



15 Appendix E – SAR Plots (Summary of the Highest SAR Values)

Test Laboratory: Bay Area Compliance Lab Corp. (BACL)

GSM850 Right Head Touch (High Channel)

DUT: Handheld GPS/GIS Data Collector;

Communication System: GSM 850 Voice; Frequency: 848.8 MHz; Duty Cycle: 1:8
 Medium parameters used (interpolated): $f = 848.8$ MHz; $\sigma = 0.90$ mho/m; $\epsilon_r = 43.27$; $\rho = 1000$ kg/m³
 Phantom section: Flat Section
 Measurement Standard: DASYS4 (High Precision Assessment)

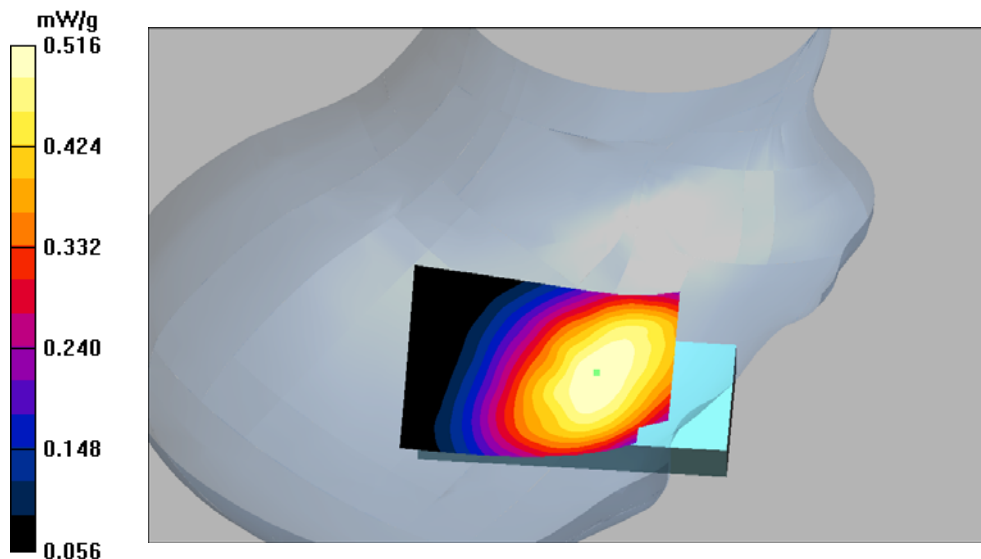
DASY4 Configuration:

- Probe: ET3DV6 - SN1604; ConvF(6.27, 6.27, 6.27); Calibrated: 8/19/2014
- Sensor-Surface: 4mm (Mechanical Surface Detection)
- Electronics: DAE3 Sn456; Calibrated: 8/13/2014
- Phantom: SAM with CRP; Type: Twin SAM; Serial: TP-1032
- Measurement SW: DASYS4, V4.7 Build 80; Postprocessing SW: SEMCAD, V1.8 Build 186

Right head Touch High Channel/Area Scan (71x91x1): Measurement grid: dx=10mm, dy=10mm
 Maximum value of SAR (interpolated) = 0.524 mW/g

Right head Touch High Channel/Zoom Scan (7x7x7)/Cube 0: Measurement grid: dx=5mm, dy=5mm, dz=5mm
 Reference Value = 7.63 V/m; Power Drift = -0.094 dB
 Peak SAR (extrapolated) = 0.620 W/kg

SAR(1 g) = 0.488 mW/g; SAR(10 g) = 0.370 mW/g
 Maximum value of SAR (measured) = 0.516 mW/g



1#

Test Laboratory: Bay Area Compliance Lab Corp. (BACL)

GPRS850, Back touch to the Phantom - (Low Channel)

DUT: Handheld GPS/GIS Data Collector;

Communication System: GPRS850; Frequency: 824.2 MHz; Duty Cycle: 1:4
 Medium parameters used: $f = 824.2\text{MHz}$; $\sigma = 0.99\text{ mho/m}$; $\epsilon_r = 53.07$; $\rho = 1000\text{ kg/m}^3$
 Phantom section: Flat Section
 Measurement Standard: DASYS4 (High Precision Assessment)

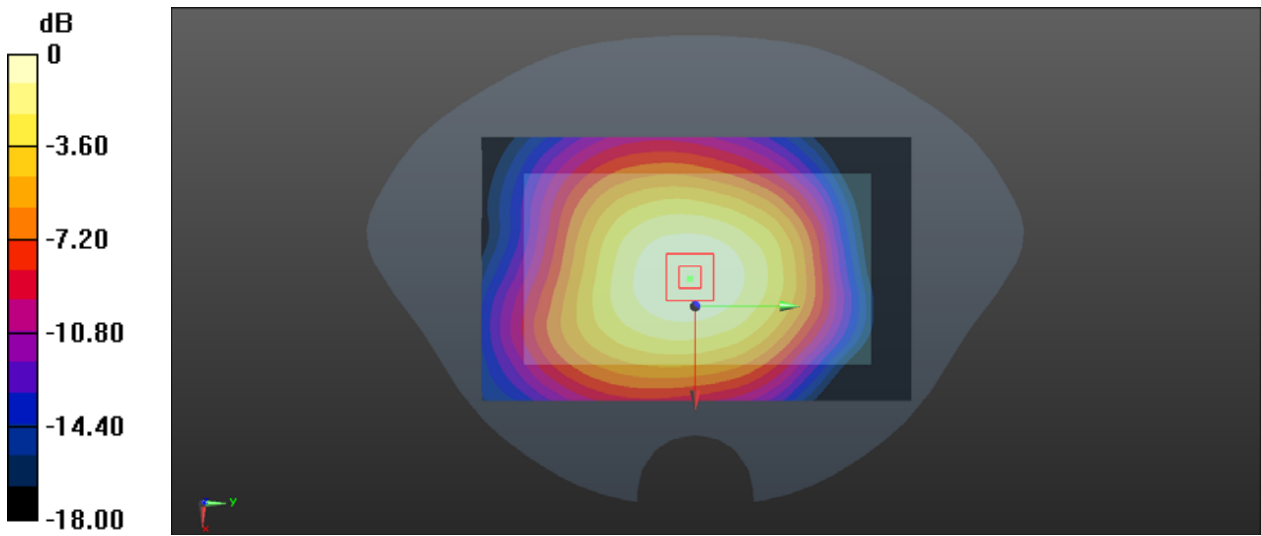
DASY4 Configuration:

- Probe: ET3DV6 - SN1604; ConvF(4.68, 4.68, 4.68); Calibrated: 8/19/2014
- Sensor-Surface: 4mm (Mechanical Surface Detection)
- Electronics: DAE3 Sn456; Calibrated: 8/13/2014
- Phantom: SAM with CRP; Type: Twin SAM; Serial: TP-1032
- Measurement SW: DASYS4, V4.7 Build 80; Postprocessing SW: SEMCAD, V1.8 Build 186

Back Touch to the Phantom/Area Scan (101x141x1): Measurement grid: $dx=10\text{mm}$, $dy=10\text{mm}$
 Maximum value of SAR (interpolated) = 0.875 mW/g

Back Touch to the Phantom/Zoom Scan (7x7x7)/Cube 0: Measurement grid: $dx=5\text{mm}$, $dy=5\text{mm}$, $dz=5\text{mm}$
 Reference Value = 27.68 V/m; Power Drift = -0.06 dB
 Peak SAR (extrapolated) = 1.26 W/kg

SAR (1 g) = 0.712 mW/g; SAR (10 g) = 0.497 mW/g
 Maximum value of SAR (measured) = 0.754 mW/g



0 dB = 0.754 W/kg = -1.23 dBW/kg

#2

Test Laboratory: Bay Area Compliance Lab Corp. (BACL)**GSM1900 Right Head Touch (Low Channel)****DUT: Handheld GPS/GIS Data Collector;**

Communication System: GSM1900; Frequency: 1850.2 MHz; Duty Cycle: 1:8
 Medium parameters used: $f = 1850.2$ MHz; $\sigma = 1.42$ mho/m; $\epsilon_r = 39.55$; $\rho = 1000$ kg/m³
 Phantom section: Flat Section
 Measurement Standard: DASYS4 (High Precision Assessment)

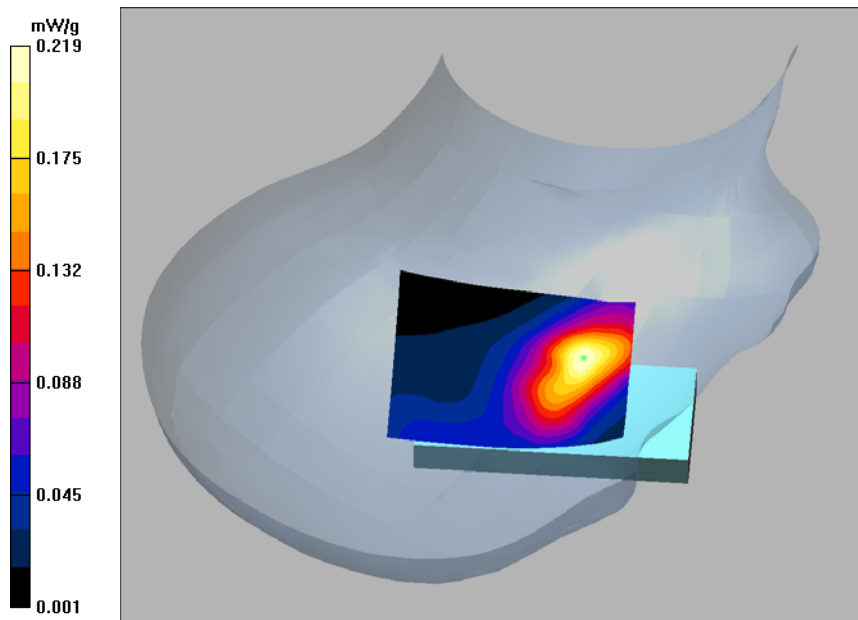
DASY4 Configuration:

- Probe: ET3DV6 - SN1604; ConvF(4.68, 4.68, 4.68); Calibrated: 8/19/2014
- Sensor-Surface: 4mm (Mechanical Surface Detection)
- Electronics: DAE3 Sn456; Calibrated: 8/13/2014
- Phantom: SAM with CRP; Type: Twin SAM; Serial: TP-1032
- Measurement SW: DASYS4, V4.7 Build 80; Postprocessing SW: SEMCAD, V1.8 Build 186

Right head Touch Low Channel/Area Scan (71x91x1): Measurement grid: dx=10mm, dy=10mm
 Maximum value of SAR (interpolated) = 0.219 mW/g

Right head Touch Low Channel/Zoom Scan (7x7x7)/Cube 0: Measurement grid: dx=5mm, dy=5mm, dz=5mm
 Reference Value = 4.81 V/m; Power Drift = -0.089 dB
 Peak SAR (extrapolated) = 0.317 W/kg

SAR(1 g) = 0.192 mW/g; SAR(10 g) = 0.113 mW/g
 Maximum value of SAR (measured) = 0.216 mW/g



#3

Test Laboratory: Bay Area Compliance Lab Corp. (BACL)

GPRS 1900, Back touch to the Phantom - (Low Channel)

DUT: Handheld GPS/GIS Data Collector;

Communication System: GPRS1900; Frequency: 1850.2 MHz; Duty Cycle: 1:4
 Medium parameters used: $f = 1850.2 \text{ MHz}$; $\sigma = 1.52 \text{ mho/m}$; $\epsilon_r = 51.3$; $\rho = 1000 \text{ kg/m}^3$
 Phantom section: Flat Section
 Measurement Standard: DAS4 (High Precision Assessment)

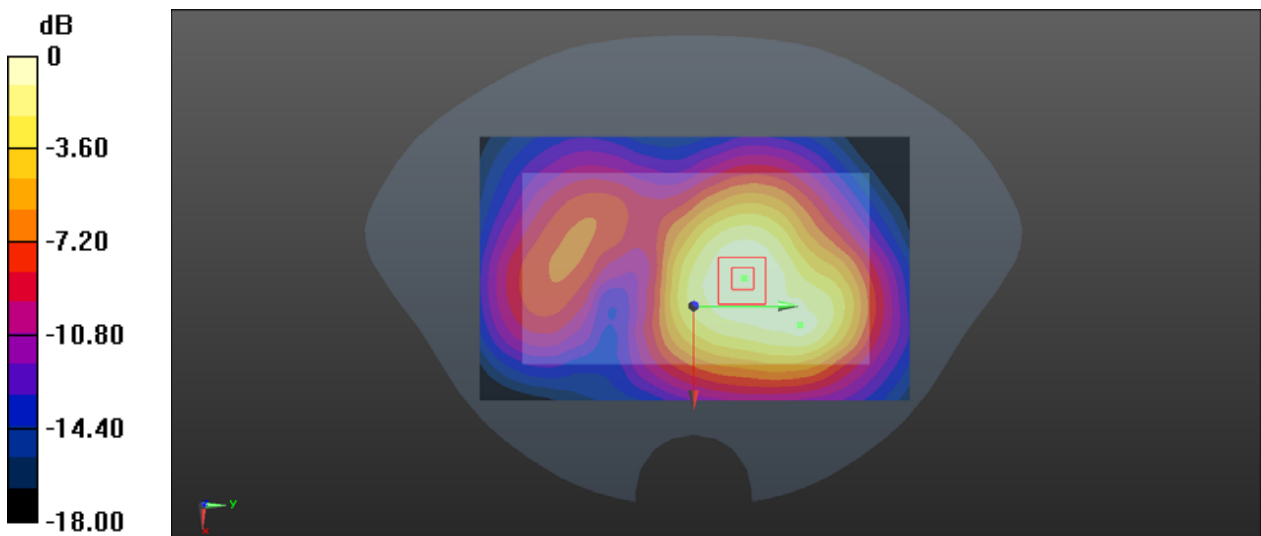
DASY4 Configuration:

- Probe: ET3DV6 - SN1604; ConvF(4.68, 4.68, 4.68); Calibrated: 8/19/2014
- Sensor-Surface: 4mm (Mechanical Surface Detection)
- Electronics: DAE3 Sn456; Calibrated: 8/13/2014
- Phantom: SAM with CRP; Type: Twin SAM; Serial: TP-1032
- Measurement SW: DAS4, V4.7 Build 80; Postprocessing SW: SEMCAD, V1.8 Build 186

Back Touch to the Phantom /Area Scan (71x91x1): Measurement grid: $dx=10\text{mm}$, $dy=10\text{mm}$
 Maximum value of SAR (interpolated) = 0.798 mW/g

Back Touch to the Phantom /Zoom Scan (7x7x7)/Cube 0: Measurement grid: $dx=5\text{mm}$, $dy=5\text{mm}$, $dz=5\text{mm}$
 Reference Value = 16.16 V/m; Power Drift = -0.03 dB
 Peak SAR (extrapolated) = 1.024W/kg

SAR(1 g) = 0.626 mW/g; SAR(10 g) = 0.388 mW/g
 Maximum value of SAR (measured) = 0.675 mW/g



0 dB = 0.675 W/kg = -1.71 dBW/kg

#4

16 Appendix F– Output Power Measurement

Conducted Output Power Measurement Results

GSM (GMSK):

Radio	Frequency (MHz)	Output Average Power (dBm)					
		GSM Voice		GPRS			
		Mea. Power	Max tune-up Power	1 slot		2 slots	
Mea. Power	Max tune-up Power			Mea. Power	Max tune-up Power		
GSM 850	824.2	22.75	23.00	22.44	22.50	23.75	24.00
	836.6	22.77	23.00	22.27	22.50	22.58	23.00
	848.8	22.50	23.00	22.07	22.50	23.38	24.00
GSM 1900	1850.2	19.92	20.50	19.45	19.50	20.85	21.00
	1880	20.07	20.50	19.15	19.50	20.46	20.50
	1909.8	20.27	20.50	19.13	19.50	20.05	20.50

Bluetooth

Mode	Channel frequency (MHz)	Output Power (dBm)	Max tune-up Power (dBm)
BDR(GFSK)	2402	0.254	0.500
	2441	0.435	0.500
	2480	0.285	0.500
EDR(4-DQPSK)	2402	-0.393	0.500
	2441	-0.135	0.500
	2480	-0.736	0.500
EDR-8DPSK	2402	-0.415	0.500
	2441	-0.363	0.500
	2480	-0.591	0.500

Wi-Fi

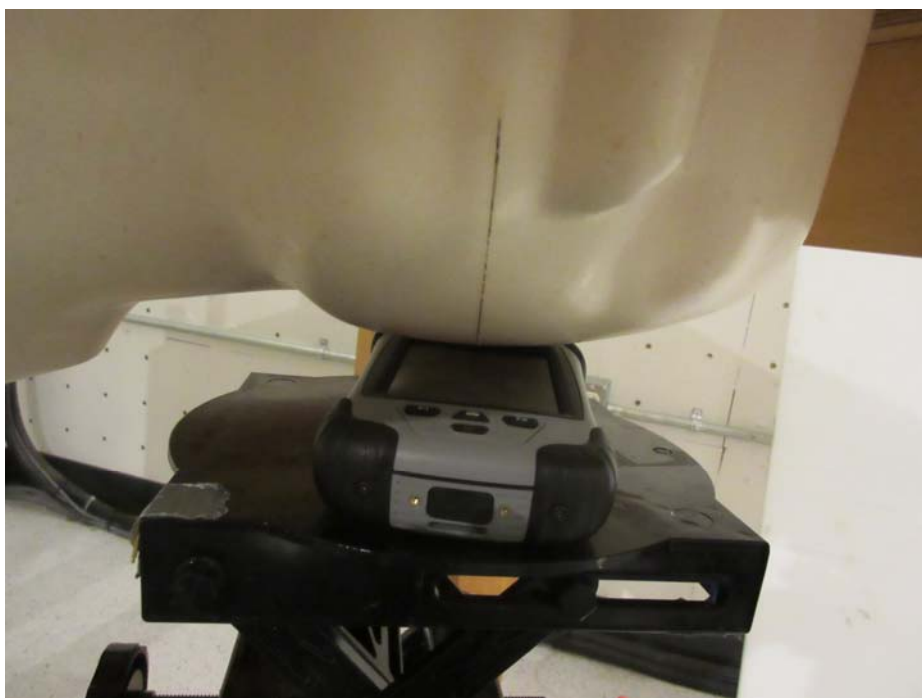
Band	Frequency (MHz)	Output Power (dBm)	Max tune-up Power (dBm)
802.11b	2412	8.51	9.00
	2437	8.35	9.00
	2462	8.29	9.00
802.11g	2412	7.31	8.00
	2437	7.83	8.00
	2462	7.89	8.00
802.11n HT20	2412	7.20	8.00
	2437	7.09	8.00
	2462	7.86	8.00

17 Appendix G – Test Setup Photos

17.1 Left Head Touch



17.2 Left Head Tilt



17.3 Right Head Touch



17.4 Right Head Tilt



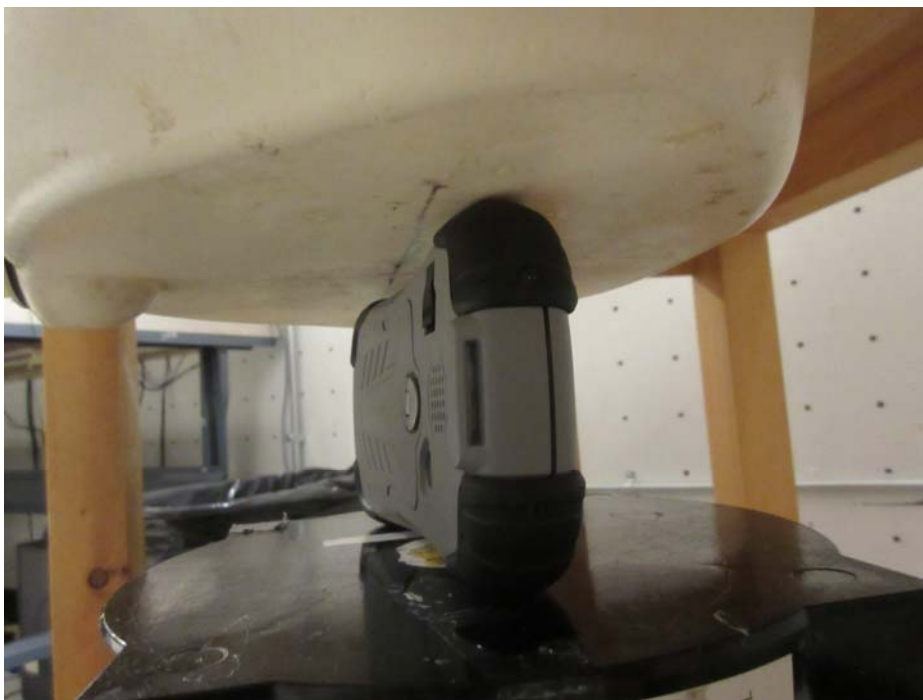
17.5 Back Side Touch to the Flat Phantom



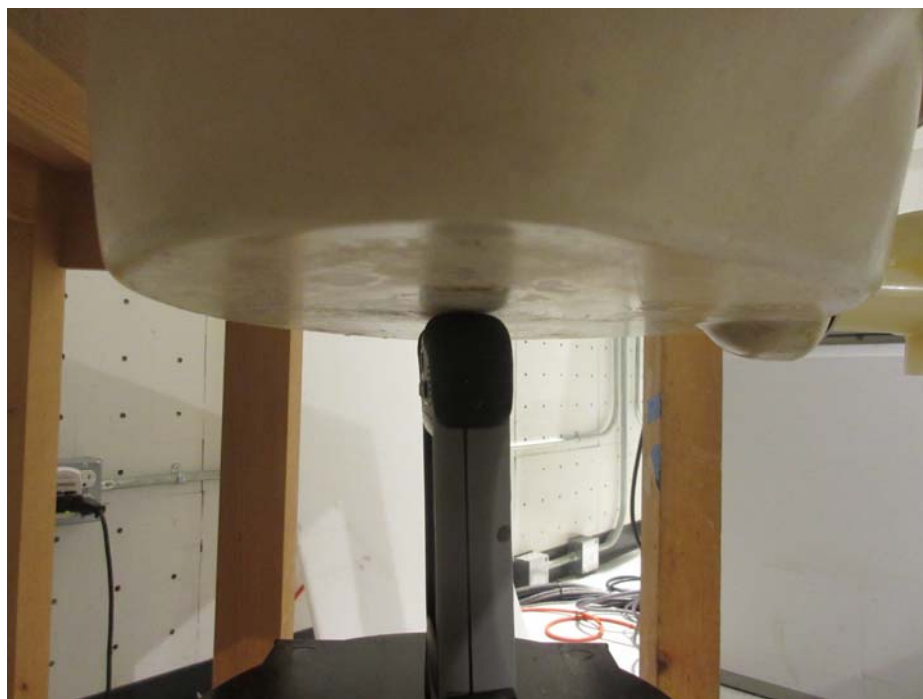
17.6 Left Side Touch to the Flat Phantom



17.7 Right Side Touch to the Flat Phantom



17.8 Bottom Side Touch to the Flat Phantom



18 Appendix H – EUT Photos

18.1 EUT – Front View



18.2 EUT – Back View



18.3 EUT – Left Edge View



18.4 EUT – Right Edge View



18.5 EUT – Top Edge View



18.6 EUT – Bottom Edge View



18.7 EUT – Open Case View



19 Appendix I - Informative References

- [1] Federal Communications Commission, "Report and order: Guidelines for evaluating the environmental effects of radiofrequency radiation", Tech. Rep. FCC 96-326, FCC, Washington, D.C. 20554, 1996.
- [2] David L. Means Kwok Chan, Robert F. Cleveland, "Evaluating compliance with FCC guidelines for human exposure to radiofrequency electromagnetic fields", Tech. Rep., Federal Communication Commission, Office of Engineering & Technology, Washington, DC, 1997.
- [3] Thomas Schmid, Oliver Egger, and Niels Kuster, "Automated E-field scanning system for dosimetric assessments", IEEE Transactions on Microwave Theory and Techniques, vol. 44, pp. 105-113, Jan. 1996.
- [4] Niels Kuster, Ralph Kastle, and Thomas Schmid, "Dosimetric evaluation of mobile communications equipment with known precision", IEEE Transactions on Communications, vol. E80-B, no. 5, pp. 645-652, May 1997.
- [5] CENELEC, "Considerations for evaluating of human exposure to electromagnetic fields (EMFs) from mobile telecommunication equipment (MTE) in the frequency range 30MHz - 6GHz", Tech. Rep., CENELEC, European Committee for Electrotechnical Standardization, Brussels, 1997.
- [6] ANSI, ANSI/IEEE C95.1-1992: IEEE Standard for Safety Levels with Respect to Human Exposure to Radio Frequency Electromagnetic Fields, 3 kHz to 300 GHz, The Institute of Electrical and Electronics Engineers, Inc., New York, NY 10017, 1992.
- [7] Katja Pokovic, Thomas Schmid, and Niels Kuster, "Robust setup for precise calibration of E-field probes in tissue simulating liquids at mobile communications frequencies", in ICECOM '97, Dubrovnik, October 15-17, 1997, pp. 120-24.
- [8] Katja Pokovic, Thomas Schmid, and Niels Kuster, "E-field probe with improved isotropy in brain simulating liquids", in Proceedings of the ELMAR, Zadar, Croatia, 23-25 June, 1996, pp. 172-175.
- [9] Volker Hombach, Klaus Meier, Michael Burkhardt, Eberhard Kuhn, and Niels Kuster, "The dependence of EM energy absorption upon human head modeling at 900 MHz", IEEE Transactions on Microwave Theory and Techniques, vol. 44, no. 10, pp. 1865-1873, Oct. 1996.
- [10] Klaus Meier, Ralf Kastle, Volker Hombach, Roger Tay, and Niels Kuster, "The dependence of EM energy absorption upon human head modeling at 1800 MHz", IEEE Transactions on Microwave Theory and Techniques, Oct. 1997, in press.
- [11] W. Gander, Computermathematik, Birkhaeuser, Basel, 1992.
- [12] W. H. Press, S. A. Teukolsky, W. T. Vetterling, and B. P. Flannery, Numerical Recipes in C, The Art of Scientific Computing, Second Edition, Cambridge University Press, 1992. Dosimetric Evaluation of Sample device, month 1998 9
- [13] NIS81 NAMAS, "The treatment of uncertainty in EMC measurement", Tech. Rep., NAMAS Executive, National Physical Laboratory, Teddington, Middlesex, England, 1994.
- [14] Barry N. Taylor and Christ E. Kuyatt, "Guidelines for evaluating and expressing the uncertainty of NIST measurement results", Tech. Rep., National Institute of Standards and Technology, 1994. Dosimetric Evaluation of Sample device, month 1998 10.

--- END OF REPORT ---