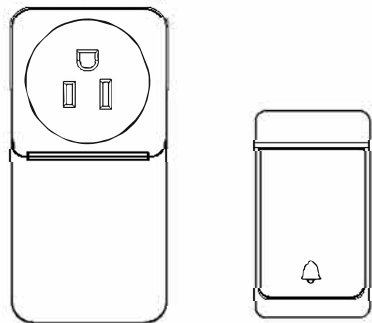


## Wireless Doorbell with Socket

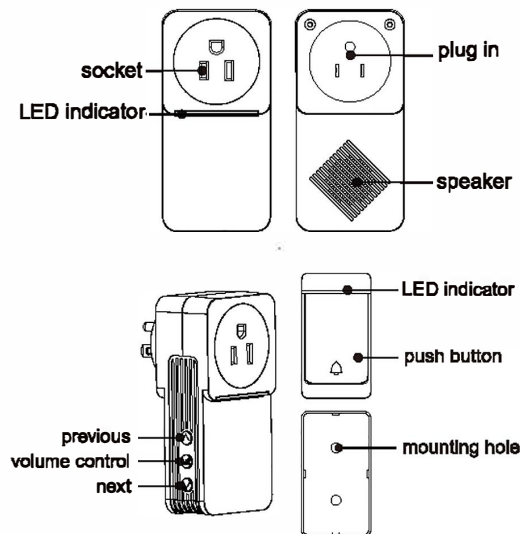
### User Manual

(Model: HD10)



This package includes:

- Wireless door chime with socket
- Wireless push button
- Hardware pack
- Battery for push button



#### Introduction

This twin plug-through chime kit is easy to install and use. It comes with 52 different melodies to choose from and the chime can be plugged into any mains socket around your

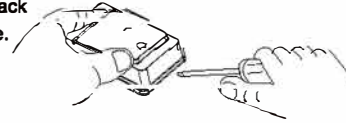
1

home so you will never have to change the batteries in it, and the plug-through feature allows you to still use the socket for other electrical products.

#### Battery Installation

##### A. Push button

1. Remove back cover by pushing in tab located at the bottom of the touch button unit with a small screwdriver.
2. Install an alkaline 23A 12V battery, make sure battery is oriented properly.
3. Put back the back cover into place.



##### B. Door Chime

Just make sure the plug is suitable for you.

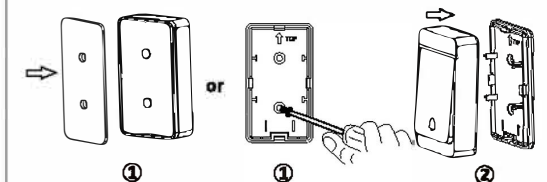
#### Mounting

Before mounting push button and chime, temporarily position them where you want them mounted. Press push button to verify chime and push button work properly. If chime does not sound, see Troubleshooting on page 6.

2

##### A. Mount push button

- Use either screws or double sided tape to mount push button.
- To mount with screws, remove back of case by pushing tab on button with a small screwdriver.
- Attach back of case to door jamb or wall. Snap front of button on.
- To mount with double sided tape, make sure the surface of the door jamb or wall is clean and smooth.



##### B. Mount door chime

Just plug the door chime into standard outlet in room, then it will work.

3

#### How to Operate?

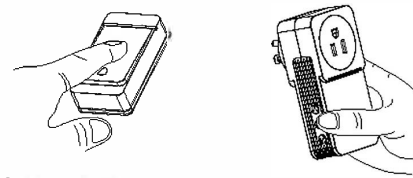
1. Press the volume button to control the volume of the melody. There are 5 adjustable volume levels: higher, high, medium, low, and mute.
2. Press the Previous/Next button to select the melody you like. There are 52 different melodies with 16 chords.
3. Reset function: Press and hold the Previous/Next button for 3 seconds. The music will be reset to the default selection.
4. This doorbell comes with a memory function in case of unexpected power failure.
5. Plug through socket enables use of the socket for other devices.

#### Code Learning

The code learning function allows you to expand your system with more push button or door chimes. Follow the instructions below for the code learning.

1. Press and hold the Volume button on door chimes, plug it into standard outlet, then release the button.
2. Press the push button, if a melody is heard, then code learning is successful. If not, repeat the above step to learn the code again.

4



#### Technical Data

- External input of door chime: AC 110V(US), AC220V(EU, UK, AU)
- Push button battery: 23A 12V(include)
- Volume: 0-110dB(5 levels including mute)
- Range: Up to 1000 feet (in the open air)
- Number of melodies: 52
- Working frequency: 433.92MHz
- Max. current for socket: 10A(AU), 13A(UK), 16A(EU, US)
- Max. voltage for socket: 110V(US), 250V(EU, UK, AU)

#### Important

1. Door chime is designed for indoor use only.
2. Avoid mounting the push button on metal frames, and make sure the mounting surface is smooth.
3. Avoid mounting the chime above heat sources such as radiators, or in damp areas such as a kitchen or bathroom.

5

4. Please do not open and repair it without professional guide in order to avoid any breakdown of components.
5. Please use high quality alkaline batteries rather than carbon zinc batteries which are insecure and have shorter service life.
6. Please do not expose it to the sun and rain for a long time and keep it away from metallic object.
7. The range of the doorbell depends on location, temperature and battery condition.
8. If not using the doorbell for long periods, unplug the chime from socket and remove the battery from push button to prevent leakage.
9. Dispose of old battery in accordance with the relevant legislation.

#### Troubleshooting

Problems	Solutions
1. Chime does not sounds	<ul style="list-style-type: none"> <li>• Check orientation of push button battery.</li> <li>• Check the battery; replace with new batteries if necessary.</li> </ul>

6

Problems	Solutions
2. Chime does not sounds	<ul style="list-style-type: none"> <li>• Check whether the plug is well inserted into the socket.</li> <li>• Make sure the push button and chime code learning instructions to reset the code.</li> </ul>
3. Batteries seem OK, but the chime does not work when installed.	<ul style="list-style-type: none"> <li>• Do not mount the chime or doorbell button on metal or near metal studs. This reduces the transmitting range.</li> <li>• Do not mount the chime too close to ground level concrete slabs. This may also reduce the range. Mount the chime away from the floor.</li> <li>• Try different locations for chime closer to the doorbell button. Also try to orient the chime at a different angle to increase the range.</li> </ul>
4. Push button does not work	<ul style="list-style-type: none"> <li>• Re-install the battery in push button.</li> </ul>

7

#### FCC Warning:

This equipment has been tested and found to comply with the limits for a Class B digital device, pursuant to part 15 of the FCC Rules. These limits are designed to provide reasonable protection against harmful interference in a residential installation. This equipment generates, uses and can radiate radio frequency energy and, if not installed and used in accordance with the instructions, may cause harmful interference to radio communications. However, there is no guarantee that interference will not occur in a particular installation. If this equipment does cause harmful interference to radio or television reception, which can be determined by turning the equipment off and on, the user is encouraged to try to correct the interference by one or more of the following measures:

- Reorient or relocate the receiving antenna.
- Increase the separation between the equipment and receiver.
- Connect the equipment into an outlet on a circuit different from that to which the receiver is connected.
- Consult the dealer or an experienced radio/TV technician for help.

Caution: Any changes or modifications to this device not explicitly approved by manufacturer could void your authority to operate this equipment.

This device complies with part 15 of the FCC Rules. Operation is subject to the following two conditions:  
(1) This device may not cause harmful interference, and (2) this device must accept any interference received, including interference that may cause undesired operation.

The device has been evaluated to meet general RF exposure requirement.

