

Egreat

A5

4K Blu-ray Media Player

User Guide



Welcome

Thank you for choosing Egreat brand product.

Egreat Technology Co., Ltd is a key National High-Tech enterprise, which was founded in 2006 Shenzhen China. We specialized in research, production, sales and service in UHD Media Player products and mainly marketed in South-East Asia, Europe and North America markets, all of our products with CE FCC RoHS certification and DTS & Dolby Licence.

Egreat always adheres to the business philosophy, faith, cautiousness, pragmatic and innovation, constantly optimizes the development strategy of high quality and perfect service. Now it has grown to be an integrative, comprehensive and high-tech manufacturer in such field.

With its strong R&D strength, advanced manufacturing line, professional sales team and high-efficiency after sales system, we have rapidly evolved into a leader in the UHD Media player industry and been recognized as a reliable supplier for many international buyers.

People all over the world are welcome to grow up together with Egreat!

This user guide with detailed description for using the product, in order to let you learn about how to use this 4K Blu-ray media player, please read it carefully before using.

The product specifications and features may change when the product is released the update software, please refer to the actual product for the use methods after upgrading.

Table of contents

Table of contents.....	5
Chapter 1 Main features.....	6
Chapter 2 Connection interface	8
I, Connection interface	8
II, Remote control button.....	11
Chapter 3 Connection and installation.....	12
Chapter 4 Initial settings.....	14
I, Video output settings.....	14
II, Audio output settings	15
III, Network settings.....	17
Chapter 5 Operation interface.....	21
I, Home page interface description.....	21
II, "More" column interface description.....	22
III, "My APPs" interface description.....	23
Chapter 6 Local play.....	26
I, Remote control button function.....	26
II, Poster wall function	27
III, Blu-ray navigation menu function	29
IV, Video file play	31
V, Add extended font of special effects subtitles	39
VI, Imprex image processing engine	41
VII, Music file play	43
VIII, Photo file play.....	44
IX, File browsing	44
Chapter 7 XBMC introduction.....	47
Chapter 8 Application installation.....	49
Chapter 9 Quick settings	50
I, General settings	50
II, Display settings	51
III, Sound settings	52
IV, Subtitle settings.....	53
V, About settings.....	54
Chapter 10 Advanced system settings.....	56
Chapter 11 Firmware update.....	58
Chapter 12 Remote control learning key	62
Chapter 13 Specification parameter	64
I, Hardware.....	64
II, Format.....	65

Chapter 1 Main features

This machine is a professional 4K Blu-ray media player, the main features are as below.

1. 4K Blu-ray media player.
 2. The world's first and exclusive Blu-ray navigation with full function, let you enjoy the full content of the Blu-ray movie.
 3. Exclusive wide color gamut HDR/HDR10, 10bit deep color, 1.07 billion kinds of color rendering, bring you with the experience of lifelike visual effect which never had.
 4. Exclusive full automatic poster wall, show you all video details, experience a different process of movie selection.
 5. 4k@60hz point to point video output, perfect fit display equipment, show you the highest quality of the picture.
 6. The industry's first DTS & Dolby certification, the perfect support for a new generation of ATMOS/DTS:X audio passthrough output.
 7. H.265/HEVC true 4K hardware decoding, smooth decoding up to 200Mbps high bit rate.
 8. 100M adaptive wired network, 802.11b/g/n speed wireless network, play smoothly in local area network.
 9. Support samba/NFS LAN sharing, play 4K/3D very clear movie, no need to plug and copy the movie frequently.
 10. Support U-Disk, mobile hard disk, 2T~8T GPT format super hard disk read & play.
 11. Support all format Blu-ray 3D movie play, let you experience the effect of 3D theater at home.
 12. One key intelligent switching movie audio track & subtitles, no need further layer set.
 13. Large white LED display panel, let you know the working status of the machine at any time, luxurious & generous.
-

Egreat 4K Blu-ray Media Player

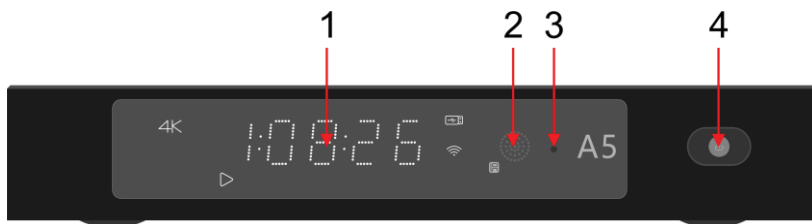
14. 4core 64bit A53 processor, android 5.1 intelligent operating system.

Chapter 2 Connection interface

I, Connection interface

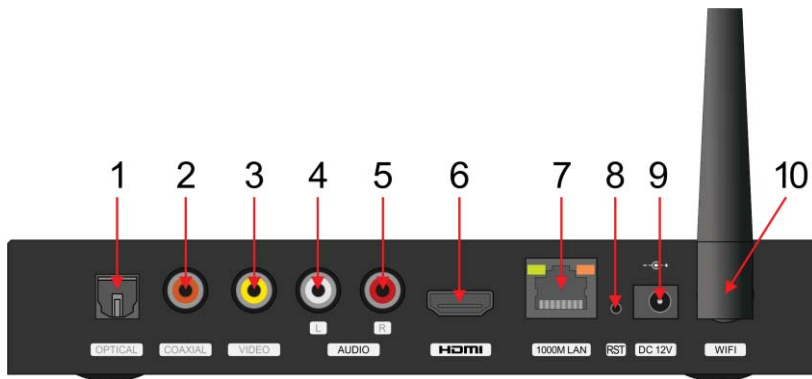
This machine is equipped with abundant of input and output interfaces, please refer to the contents of this chapter to know the player's interface functions.

Front



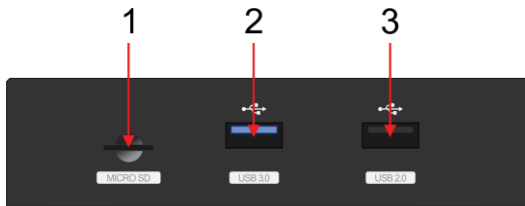
1. LED display panel
2. Remote control receiving window
3. Standby indicator
4. Standby key

Back

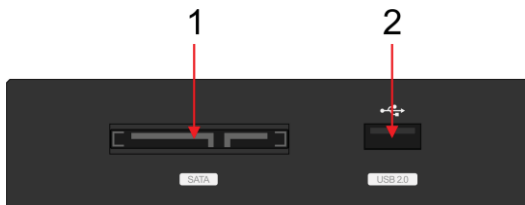


Egreat 4K Blu-ray Media Player

1. Optical audio output
2. Coaxial audio output
3. Composite video output
4. Left channel audio output
5. Right channel audio output
6. 4K HDMI output
7. Wired network interface
8. Forced recovery button
9. DC power input
10. Wireless network antenna



1. Micro SD card interface
2. USB3.0 interface
3. USB2.0 interface

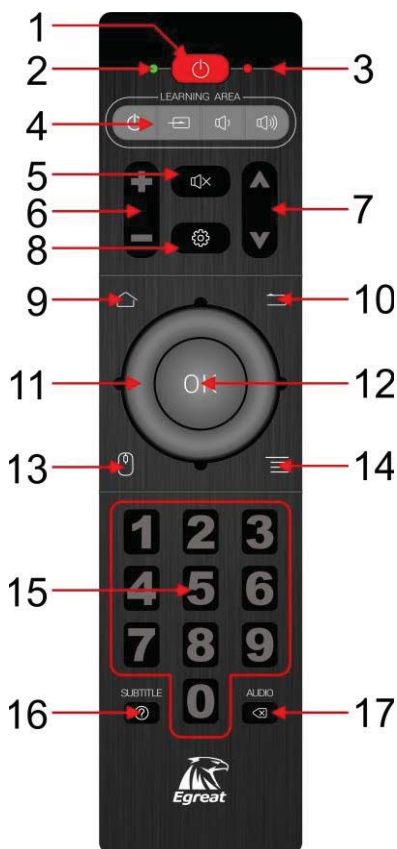


1. SATA interface
 2. USB2.0 interface
-

Note

- Please don't plug the HDMI cable or hard disk in the charged state to avoid damage to the machine.
- Please don't pour the liquid on the machine, so as not to cause damage to the machine.
- There is no spare part of this machine in the package, the nonprofessionals do not disassemble the machine.

II, Remote control button



1. Power key
2. LED indicator for IR transmitter
3. LED indicator for learning mode
4. Learning key area
5. Mute key
6. Vol+/Vol- key
7. Prev/Next key
8. Settings key
9. Home page
10. Return key
11. Up/Down/Left/Right key
12. OK key
13. Mouse mode key
14. Menu key
15. 0~9 number key
16. Subtitle/Help key
17. Audio/Delete key

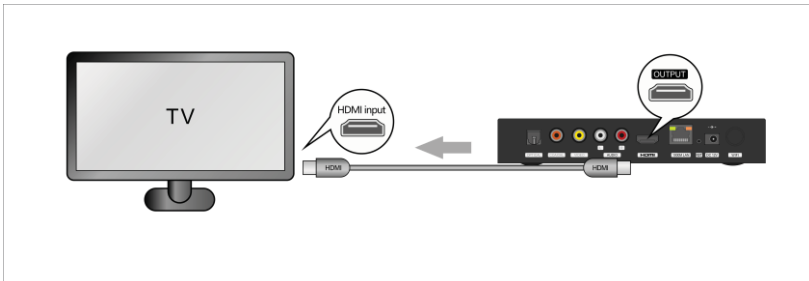
Note

- The key of the remote control with multiple functions, which detailed in the description of the following chapters.
- The functions of the learning keys are detailed in the description of the following special chapter.

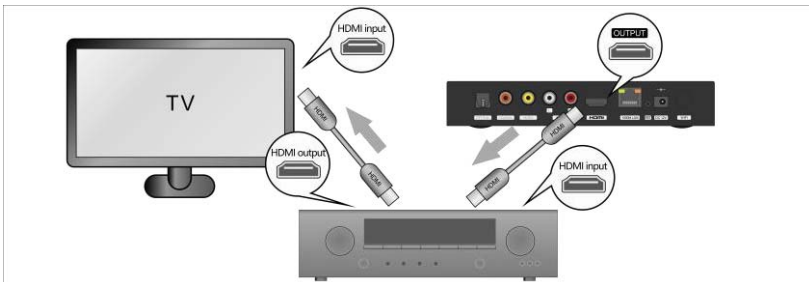
Chapter 3 Connection and installation

Method for connecting TV

Please turn off the power of the TV and media player first, then connect the media player and TV with the HDMI cable.

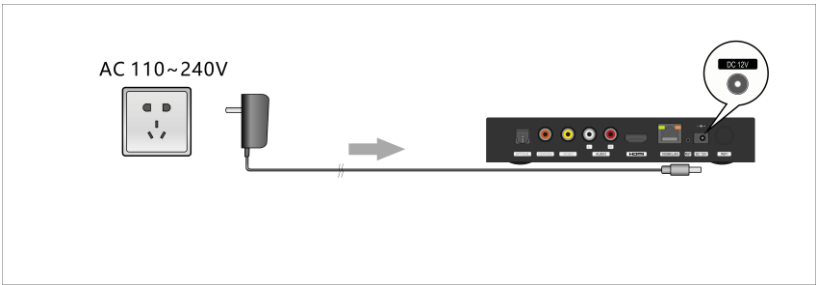


If you use an audio power amplifier, please use the HDMI or optical cable to connect the TV to the amplifier, then connect the amplifier to the media player.



This product comes along with a power adapter, please connect the power adapter with the media player DC in power port, then connect the adapter with 110~240V AC power socket.

Egreat 4K Blu-ray Media Player



Chapter 4 Initial settings

To have a better experience, please connect this machine to the internet first, then set the most suitable audio and video output modes of this player according to the modes supported by your audio and video devices (such as audio power amplifier, TV and projector).

I, Video output settings

This machine can automatically recognize the perfect video resolution output according to the TV settings when connected with TV via HDMI cable. But in some cases or in the case of using composite video output, you need manually adjust the video resolution output to the perfect status.

Please select “Settings” from the home page and choose “Display”, then select the suitable resolution according to your display device.



If you connect to the traditional picture tube TV via the composite video cable, please choose the “576P” or “480P” video output.

If you connect to the normal TV via the HDMI cable, please choose the “1080P” video output.

If you connect to the 4K TV, strongly recommend to choose the “2160P

Egreat 4K Blu-ray Media Player

60Hz" video output, so as to achieve the best display effect of the 4K TV.

Note

- If there is no screen display after switching resolution, please wait 15 seconds not to operate, the machine will automatically switch back to the previous resolution.
- The resolution is not as higher as better, please refer to the best resolution supported by the display device.
- 4K resolution (2160P 60Hz, 2160P 50Hz, 2160P 30Hz, 2160P 25Hz, 2160P 24Hz) , you must ensure that the HDMI cable, audio power amplifier (if used), the projector and other devices all can be used to support the 4K.

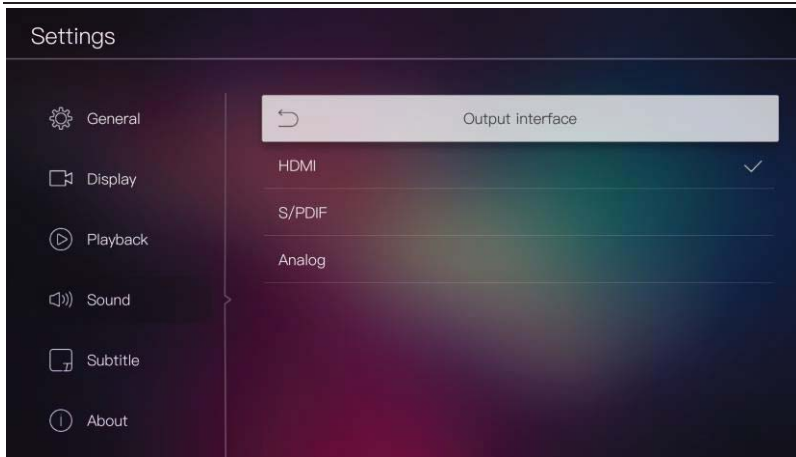
II, Audio output settings

If you connect this machine directly to the TV without the audio power amplifier, please select "Settings" from the home page and choose "Sound", enter "Passthrough", then select "Off", so the player will be "LPCM" audio format output, the TV can make a normal sound.

If you connect the machine to the audio power amplifier, please read this section carefully.

To get the best audio effect of the audio power amplifier, you need to set the machine to output the appropriate audio format.

First, please select "Settings" from the home page and choose "Sound", then select "Output interface" option.

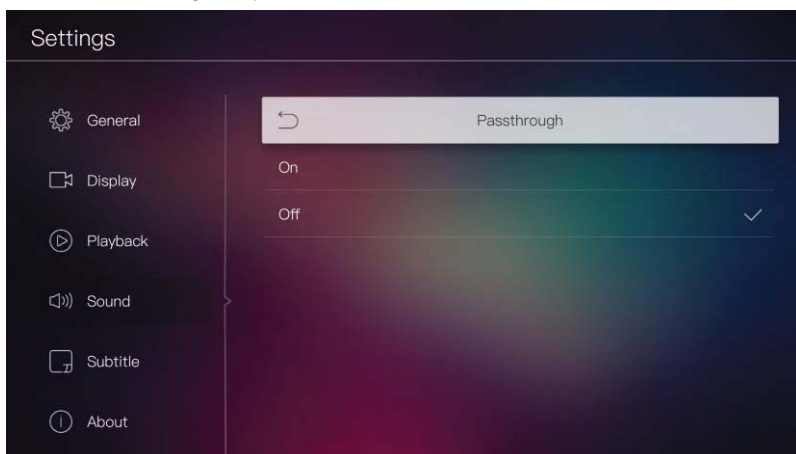


If you connect to the audio power amplifier via the HDMI HD cable, please select the "HDMI" option;

If you connect to the audio power amplifier via the optical or coaxial cable, please select the "S/PDIF" option.

If you connect to the audio power amplifier via analog audio cable (the red and white cable in the composite video cable group), please select the "Analog" option. *Note, after selected the "Analog" option, no need to set the following "Passthrough" option and "Amplifier compatibility" option.*

Next, please select "Settings" from the home page and choose "Sound", select "Passthrough" option.

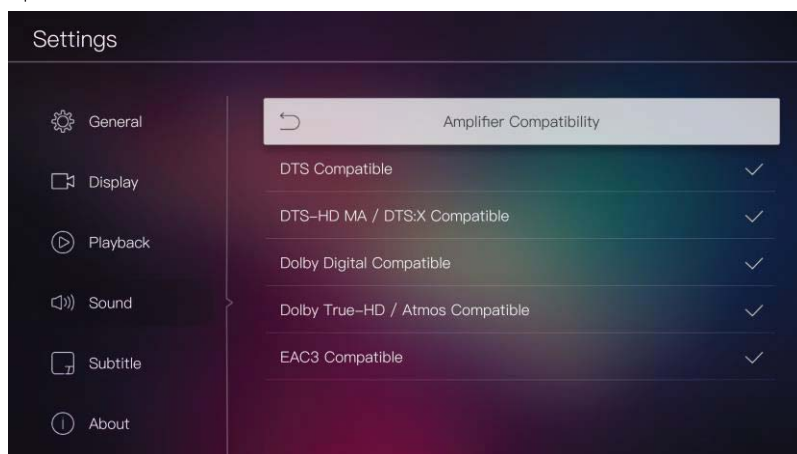


Egreat 4K Blu-ray Media Player

If you want the player to output the audio decoding format, please select the “Off” option to turn off the passthrough output.

If you want the player to output the audio passthrough format, please select the “On” option to turn on the passthrough output.

In the case of turning on passthrough output, please select the “Settings” from the home page and choose “Sound”, select “Amplifier compatibility” option.



In the “Amplifier compatibility” option, please select the corresponding audio format options according to the support situation of your audio power amplifier for audio format of DTS-HDMA/DTS:X, Dolby Digital, Dolby True-HD/Atmos and EAC3.

For example, if your audio power amplifier only support DTS and Dolby Digital audio decoding, please select “DTS” and “Dolby Digital” two options.

Note	● If the selection is not appropriate, it may cause the movie no sound when play or can't reach the best effect. Please refer to the user guide or specifications of the audio power amplifier when needed.
-------------	---

III, Network settings

Select “Settings” from the home page and enter “General” as below,

If you use the wireless network, please select and turn on “Wi-Fi” in “General” option, the system will search and list out all nearby Wi-Fi signals

after a while, please select the one you want to connect and login with the password, the connection information of the wireless network will be displayed after the connection.

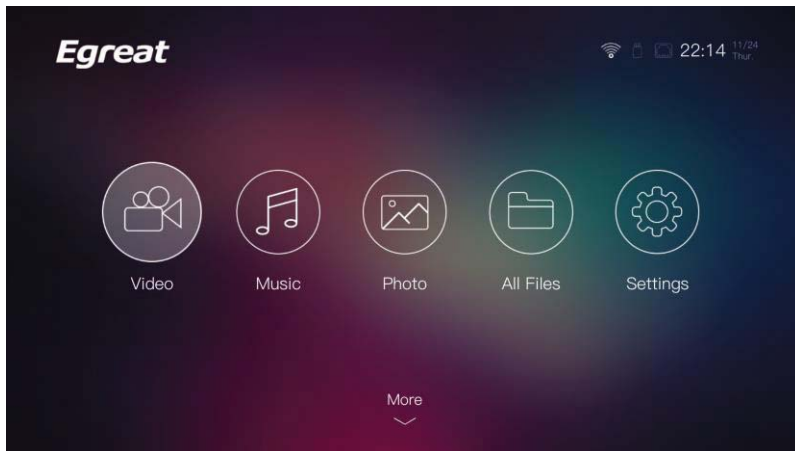
If you use the wired network, please connect the network cable, select and turn on “Ethernet” in “General” option, then the system will connect to the internet automatically, the connection information of the wired network will be displayed after the connection.



When using a wired network connection, if you select the “DHCP” option, then the system will automatically assign the IP address and automatically connect to the wired network. If you haven’t selected the “DHCP” option, you need to manually enter the IP address, subnet mask, gateway and DNS related information, the system will configure the wired network and automatically connect according to the manually entered information.

Chapter 5 Operation interface

I, Home page interface description



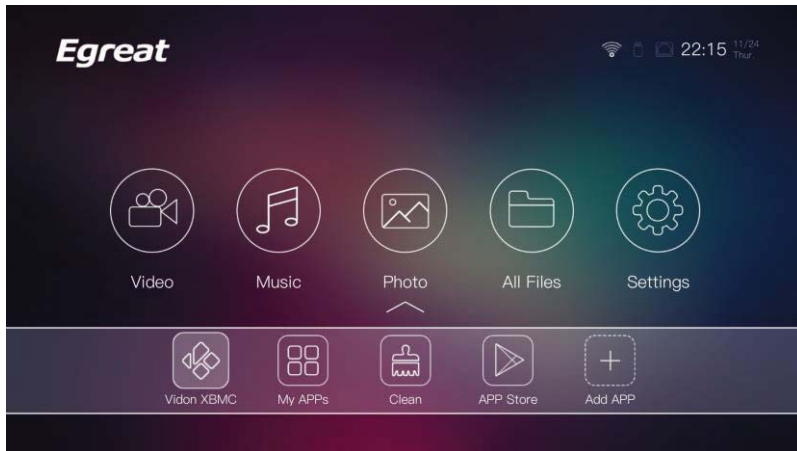
In the home page, the top right of the home page will show the current clock / date / week / wired network / wireless network /USB device information, etc.

There are several large circular function icons in the middle of the home page interface, from left to right, the functions are as below.

1. Video: Browse the video files located in the local area and local area network for the video play.
2. Music: Browse the music files located in the local area and local area network for the music play.
3. Photo: Browse the photo files located in the local area and local area network for the photo play.
4. All files: View all storage devices connected to this machine and all shared files in the local area network, can install the applications and open the files in various formats from here, and rename, copy, paste, remove the files through here and so on.
5. Settings: Enter the quick settings and adjust some functions and effects

of this machine.

There is a smaller “More” icon at the bottom of the home page interface, you can press the “Down” key of the remote control to enter the “More” column.



From left to right, the functions are as below.

1. Vidon XBMC: Enter a powerful multimedia file play software XBMC (KODI) .
2. My APPs: View all applications that have been installed in this machine, and start running them or clear data, sort or uninstall and so on.
3. Clean: After running a lot of applications, the resources of the machine may be occupied too much and cause the system to slow down, these wasted resources can be released through this function, and recover the running speed of the machine again.
4. APP Store: Enter the APP Store, install your favorite applications.
5. Add APP: Add a shortcut of the application used frequently to the “More” column, and no longer need to be hard to choose from the list of “My APPs”.

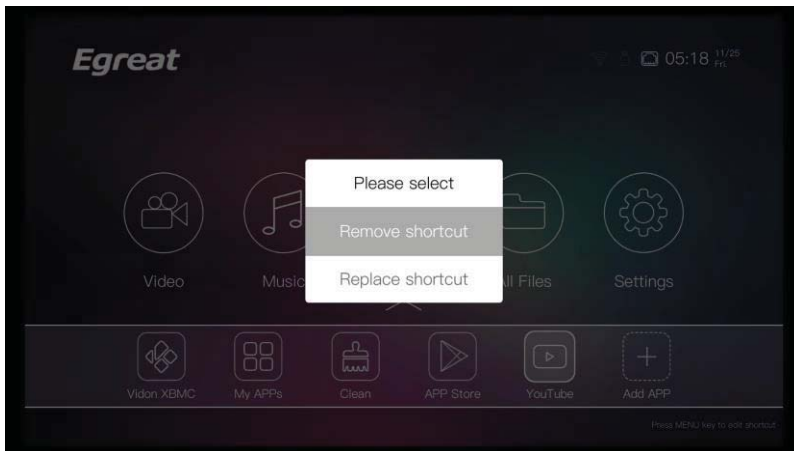
II, “More” column interface description

By using the “Add APP” button in the “More” column, allows you to add a shortcut of the application used frequently to the “More” column, thus

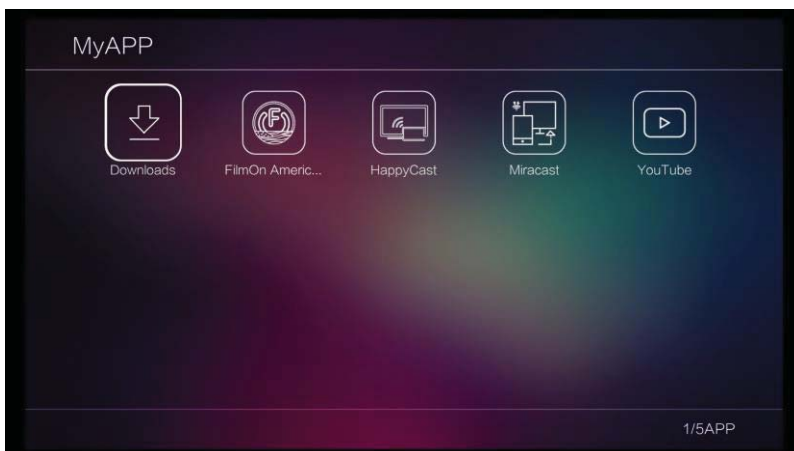
Egreat 4K Blu-ray Media Player

you can quickly start the application when need to use.

In the “More” column, move the operation focus to the shortcut of application that has been added, press the menu key of the remote control, you can remove or replace the shortcut.



III, “My APPs” interface description



In “My APPs” interface, will list out all applications installed in this machine for users to select to use, usually the more newly installed applications will be ranked in the back.

In "My APPs" interface, press the menu key, open the option menu for sorting and other management operations.



The function of option menu from top to bottom are as below.

1. Sorting: Set the arrangement method of the applications in this interface, and arrange the application icons according to the file name, time and frequency of use.
 2. Details: Show the storage use status of the selected application and operational requirement information and so on, and also can be forced to terminate the operation of program or even uninstall and so on.
 3. Set Top: Be forced to set an application icon to the first icon display location.
 4. Uninstall: Uninstall and remove the selected application from this machine.
 5. Set Boot: Set the specified application to boot automatically, that is, the machine will automatically enter the specified application after boot, and does not require the user to operate.
-