

# **RUN FREE PRO<sup>HD</sup>**

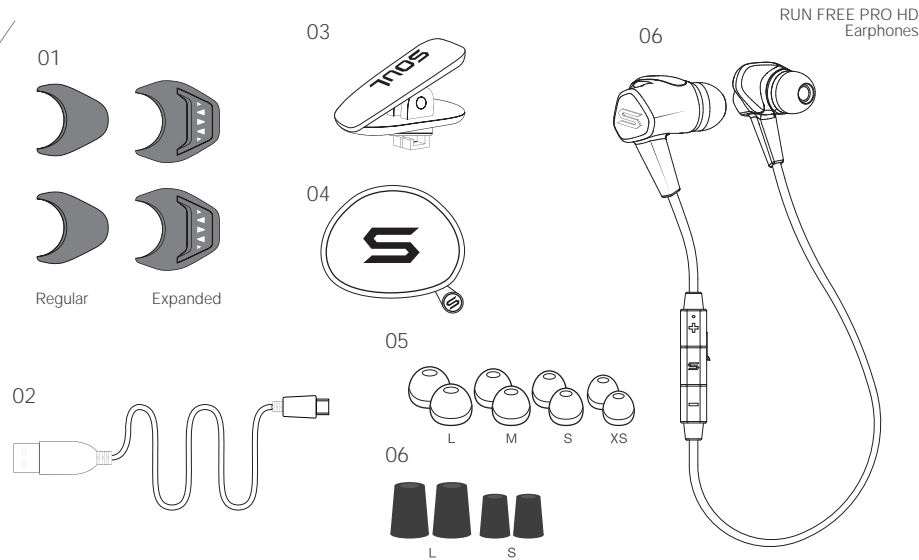
## **USER GUIDE**

Balanced Armature Sports Earphones With Bluetooth

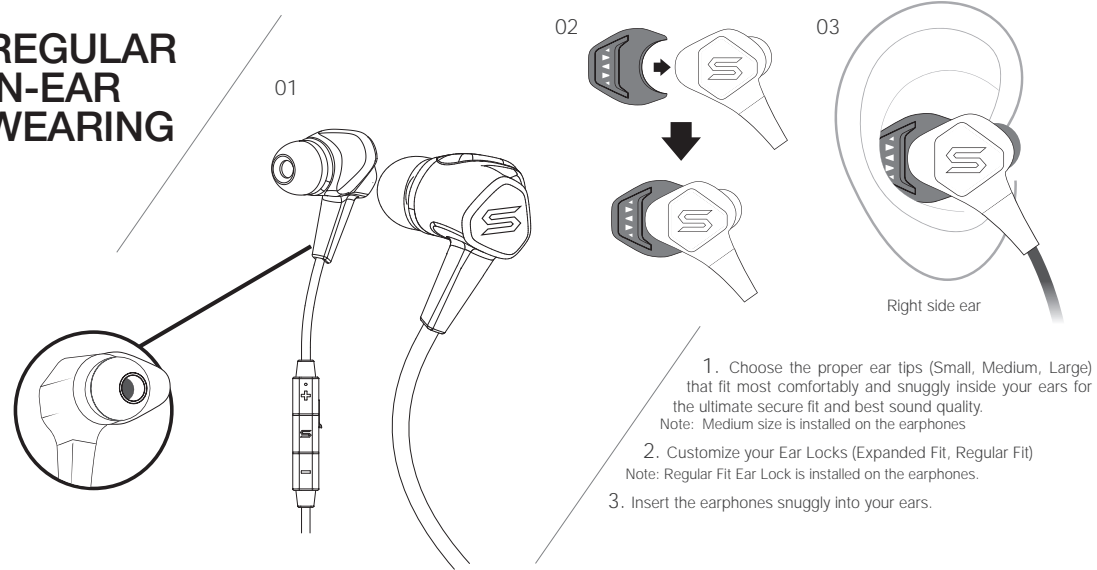
**RUN FREE PRO HD**



## WHAT'S IN THE BOX

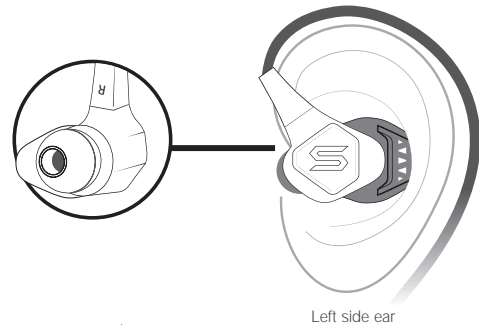
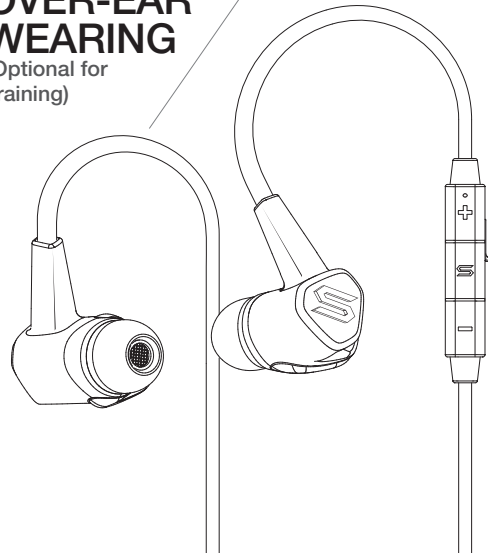


## REGULAR IN-EAR WEARING



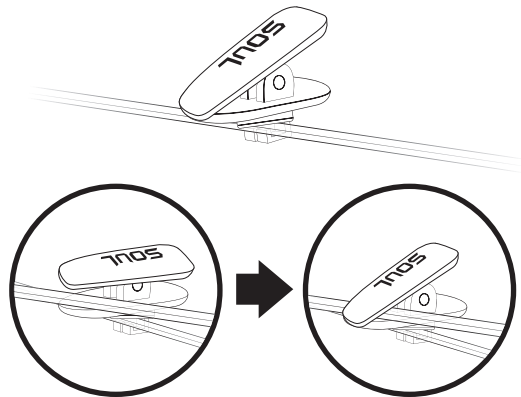
## OVER-EAR WEARING

(Optional for Training)



NOTE: Over-ear wearing option is not designed for calls. Enjoy your music with the cord behind your neck while you train!

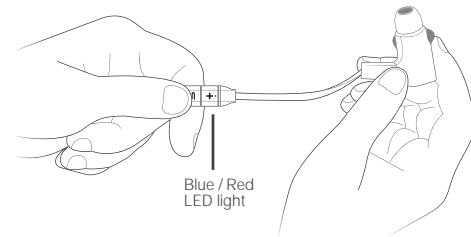
1. Choose the proper ear tips.
2. Customize your Ear Locks (Expanded Fit, Regular Fit)  
Note: Regular Fit Ear Lock is installed on the earphones.
3. Reverse the earphones before inserting into your ears.



TIP: The cable will be longer in this wearing option. You can use the clip to shorten the cable so it won't interfere your training.

## PAIRING

1. In the "OFF" position. Turn "ON" pairing mode by pressing and holding the center button on the remote for 5 seconds until the Blue/Red LED light starts to flash on the earphones.
2. On your phone/music devices, turn Bluetooth on. It should start searching for devices.
3. Find "SOUL RUN FREE PRO HD" and select (You may need to enter passcode 0000 if prompted)
4. Voice prompt or beeping sound will indicate that the RUN FREE PRO HD is connected.
5. If pairing fails, turn off the earphones by pressing on the center button for 5 seconds then repeat the process. (You may also see your phone/music devices instructions for more information)



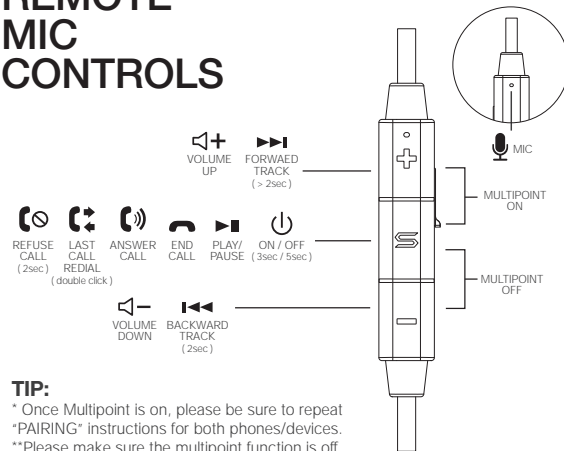
## AUTO PAIRING MODE

1. Paired devices will remember each other unless pairing information is deleted.
2. After initial pairing, simply press the center button for 3 seconds and the earphones will be paired with the phone/music device automatically.
3. To pair a new phone/music device, go into Bluetooth settings on your phone/music device, delete paired device and repeat the "PAIRING" instructions above.

## MULTIPOINT (PAIRING WITH MORE THAN ONE DEVICE)

1. With SOUL multipoint technology, you can pair and connect up to two Bluetooth devices to your earphones.
2. The headset must be in standby mode (Not connected with any device or phone)
3. To turn on, user can press the volume "+" and "Multifunction" buttons together. User will hear a tone which indicates the activation of this feature.
4. To turn off, user can press the volume "-" and "Multifunction" buttons together. User will hear a tone which indicates the deactivation of this feature.

## REMOTE MIC CONTROLS

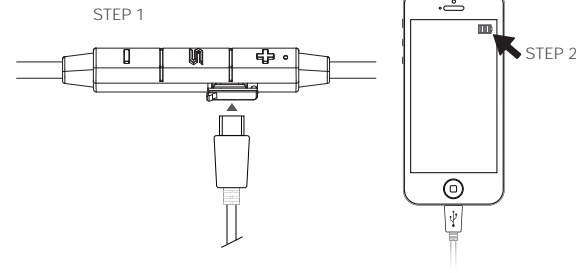


### TIP:

\* Once Multipoint is on, please be sure to repeat "PAIRING" instructions for both phones/devices.  
\*\*Please make sure the multipoint function is off when not connected to 2 phones/devices.

## BATTERY LIFE AND CHARGING

1. Charging the battery prior to first use is recommended but not required. The RUN FREE PRO HD is pre-charged however initial charge will vary.
2. Battery life status will be indicated at the top right corner of your iPhone screen.
3. Low battery indicator on earphones is shown by a Red LED light. Charge the earphone when the flashing light turns Red.
4. When charging, Red LED light means the earphones are being charged. A Blue LED light means the earphones are fully charged.



## SPECIFICATIONS

Bluetooth Version:  
V4.1 + EDR with Apt-X decoder support

Profile:  
A2DP, AVRCP, HSP, and HFP.

Range:  
10 meters (33 feet)

Charging time (Full charge):  
Approx. 2 hours

Working time:  
up to 12 hours (Varies by volume and content)

Standby time:  
up to 12 days

Dimensions:  
17H x 19W x 32D (mm) earphone size, 580mm cord length

Weight:  
15g

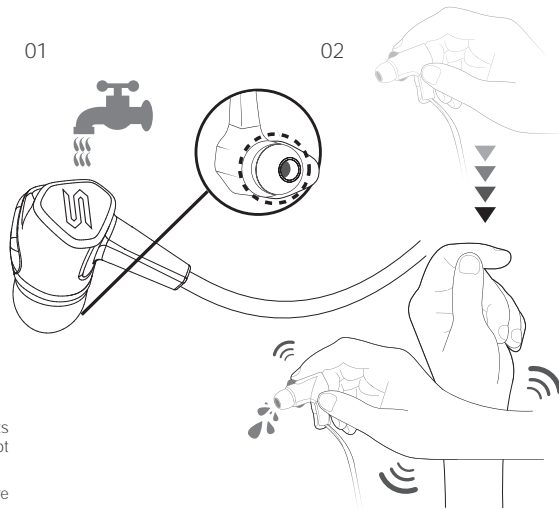
## WATER/ SWEAT PROOF

1. The earphone unit is not completely waterproof where the sound is output. Sound may become muffled if water gets inside.
2. When this happens, hold the earphones as shown and pat 10-20 times to remove the water. Place a dry cloth underneath the earphones for 2-3 hours.

Please ensure the USB battery door is completely closed and locked securely before cleaning.

### NOTE:

1. Sweat resistance performance of your earphones is based on measurements stated in this manual. Malfunctions as a result by misuse by the customer are not covered by the warranty.
2. It is recommended to dry off the device for 24 hours in a dry environment before charging after exposure to water or sweat.



### ! WARNING

DO NOT WASH THE EARPHONES WHEN THE USB BATTERY DOOR IS OPENED OR LOOSE

DO NOT use alcohol, paint thinners, detergent, shampoo, or other solvents for cleaning purposes.

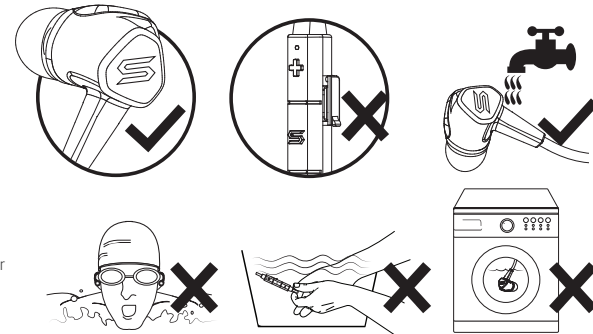
DO NOT intentionally immerse the earphones under water.

DO NOT wear the earphones to swim.

DO NOT wash the earphones in washing machine.

NOTE: The Remote Control Microphone is only water resistant to a degree equivalent to IPX2 drip-proof specification. Do not wash them in running water in the same way as you would wash the earphone unit.

**CONNECT AND GET LISTENING !**



**Compliance with FCC rules (U.S.A., only)**

This device complies with Part 15 of the FCC rules. Operation is subject to the following two conditions:

(1) This device may not cause harmful interference, and (2) this device must accept any interference received, including interference that may cause undesired operation.

**Warning**

Changes or modifications to this unit not expressly approved by the party responsible for compliance could avoid the user's authority to operate the equipment.

**Note**

This equipment has been tested and found to comply with the limits for a Class B digital device, pursuant to Part 15 of the FCC Rules. These limits are designed to provide reasonable protection against harmful interference in a residential installation. This equipment generates, uses and can radiate radio frequency energy and, if not installed and used in accordance with the instructions, may cause harmful interference to radio communications.

However, there is no guarantee that interference will not occur in a particular installation. If this equipment does cause harmful interference to radio or television reception, which can be determined by turning the equipment off and on, the user is encouraged to try to correct the interference by one or more of the following measures:

- Reorient or relocate the receiving antenna.
- Increase the separation between the equipment and receiver.
- Connect the equipment into an outlet on a circuit different from that to which the receiver is connected.
- Consult the dealer or an experienced radio/TV technician for help.

**SOUL®**

**Join #SOULNATION**

Please follow us on our social media platforms for news and updates !



@Soulelectronics



Soul Electronics



Soul Electronics

