

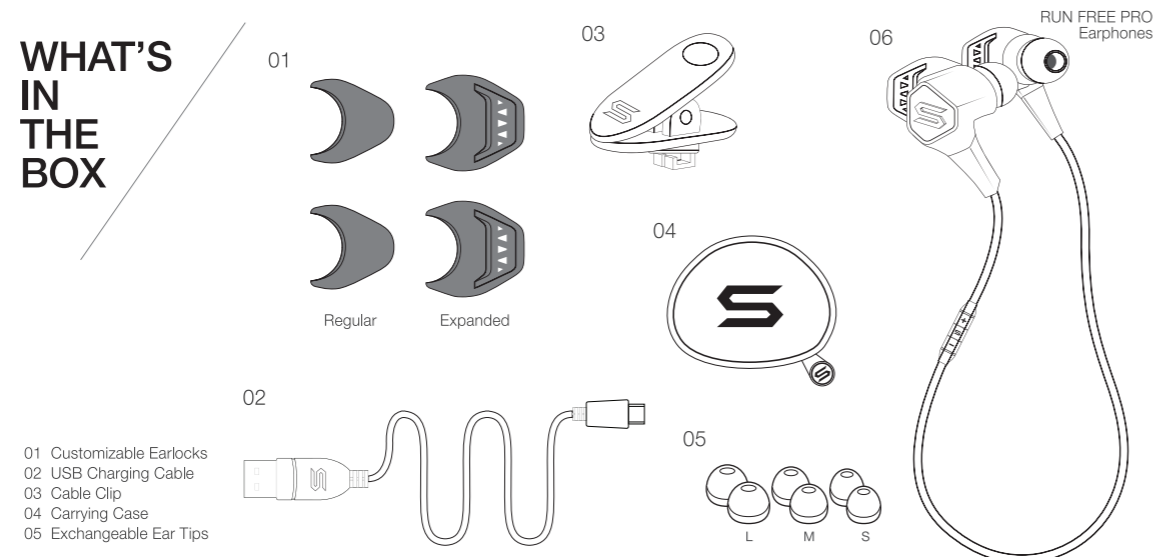
162X420MM 80g

SOUL

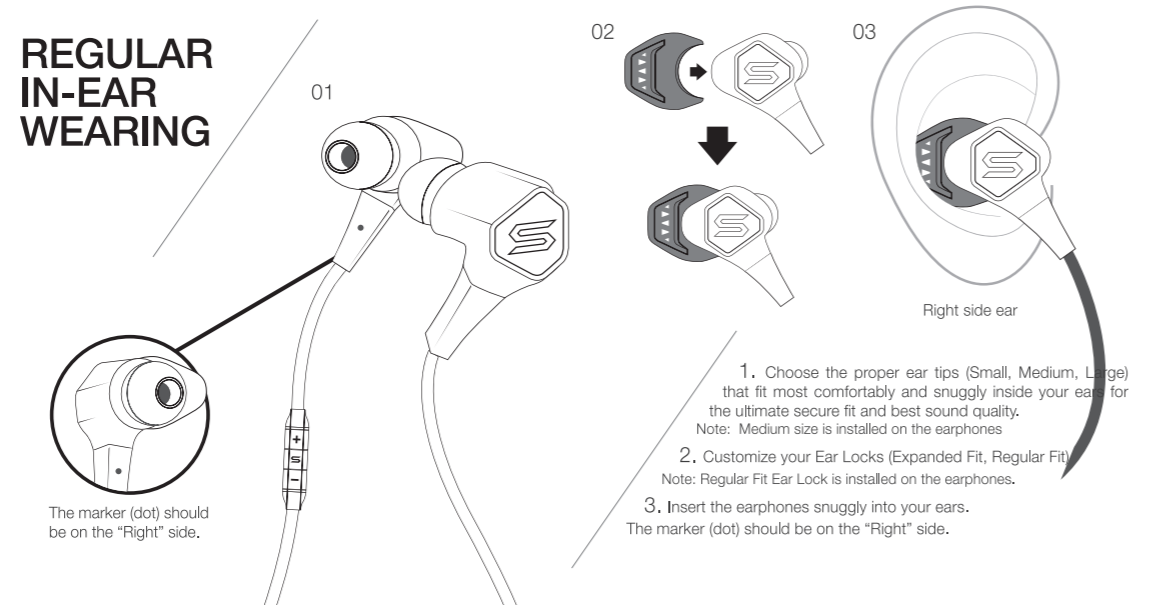
Join #SOULNATION
Please follow us on our social media platforms for news and updates!

Facebook: Soul Electronics
Instagram: Soul Electronics
Twitter: @Soulelectronics

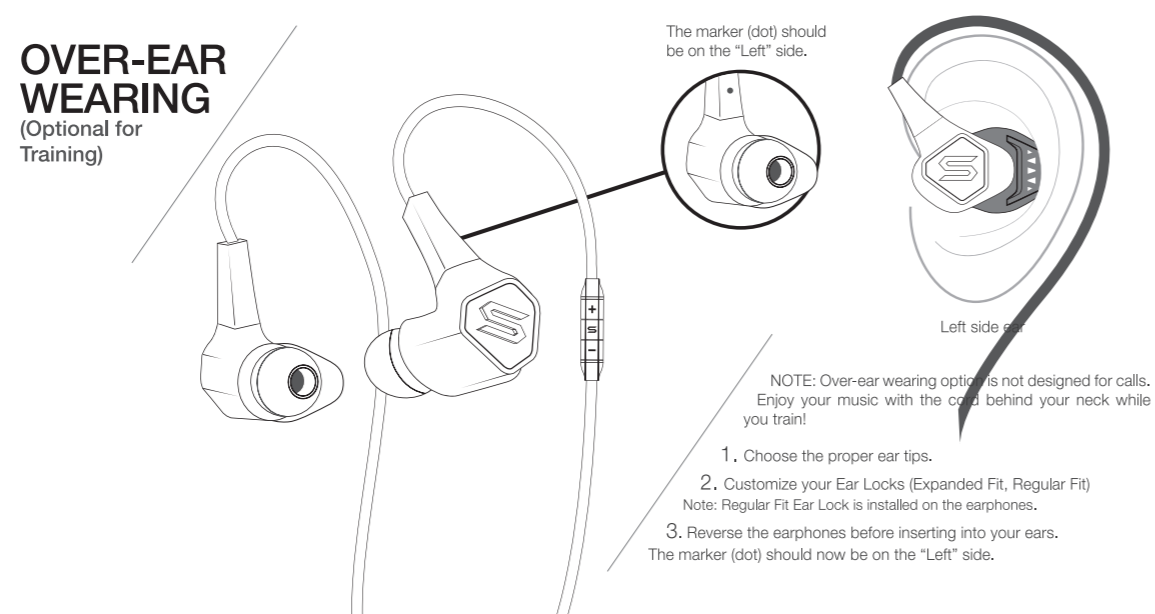
WHAT'S IN THE BOX



REGULAR IN-EAR WEARING



OVER-EAR WEARING (Optional for Training)



WARNING

DO NOT WASH THE EARPHONES WHEN THE USB BATTERY DOOR IS OPENED OR LOOSE
DO NOT use alcohol, paint thinners, detergent, shampoo, or other solvents for cleaning purposes.
DO NOT intentionally immerse the earphones under water.
DO NOT wear the earphones to swim.
DO NOT wash the earphones in washing machine.

NOTE: The Remote Control Microphone is only water resistant to a degree equivalent to IPX2 drip-proof specification. Do not wash them in running water in the same way as you would wash the earphone unit.

CONNECT AND GET LISTENING!

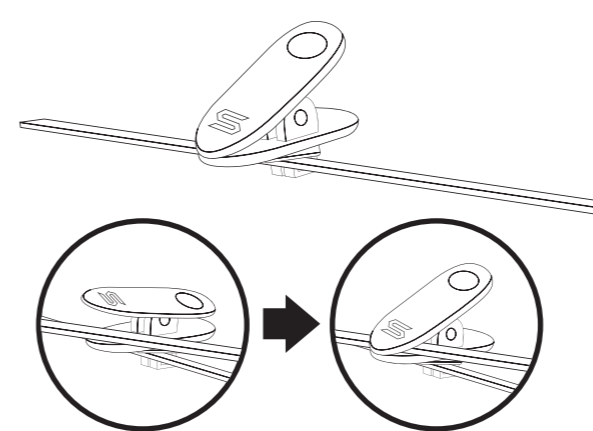


SOUL RUN FREE PRO USER GUIDE

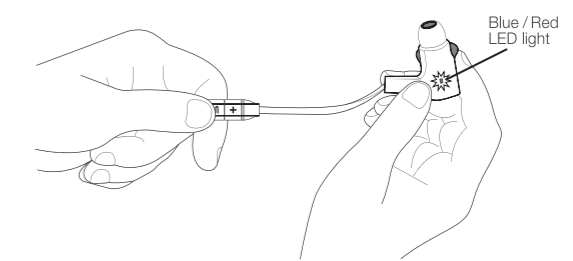
ENGLISH

PAIRING

- In the "OFF" position, Turn "ON" pairing mode by pressing and holding the center button on the remote for 5 seconds until the Blue/Red LED light starts to flash on the earphones.
- On your phone/music devices, turn Bluetooth on. It should start searching for devices.
- Find "SOUL RUN FREE PRO" and select (You may need to enter passcode 0000 if prompted)
- Voice prompt or beeping sound will indicate that the RUN FREE PRO is connected.
- If pairing fails, turn off the earphones by pressing on the center button for 5 seconds then repeat the process. (You may also see your phone/music devices instructions for more information)



TIP: The cable will be longer in this wearing option. You can use the clip to shorten the cable so it won't interfere your training.



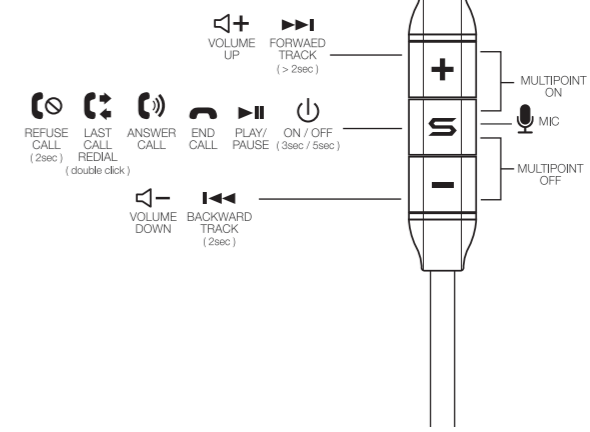
AUTO PAIRING MODE

- Paired devices will remember each other unless pairing information is deleted.
- After initial pairing, simply press the center button for 3 seconds and the earphones will be paired with the phone/music device automatically.
- To pair a new phone/music device, go into Bluetooth settings on your phone/music device, delete paired device and repeat the "PAIRING" instructions above.

MULTIPOINT (PAIRING WITH MORE THAN ONE DEVICE)

- With SOUL multipoint technology, you can pair and connect up to two Bluetooth devices to your earphones. (Not connected with any device or phone)
- To turn on, user can press the volume "+" and "Multifunction" buttons together. User will hear a tone which indicates the activation of this feature.
- To turn off, user can press the volume "-" and "Multifunction" buttons together. User will hear a tone which indicates the deactivation of this feature.

REMOTE MIC CONTROLS



BATTERY LIFE AND CHARGING

- Charging the battery prior to first use is recommended but not required. The RUN FREE PRO is pre-charged however initial charge will vary.
- Battery life status will be indicated at the top right corner of your iPhone screen.
- Low battery indicator on earphones is shown by a Red LED light. Charge the earphone when the flashing light turns Red.
- When charging, Red LED light means the earphones are being charged. A Blue LED light means the earphones are fully charged.

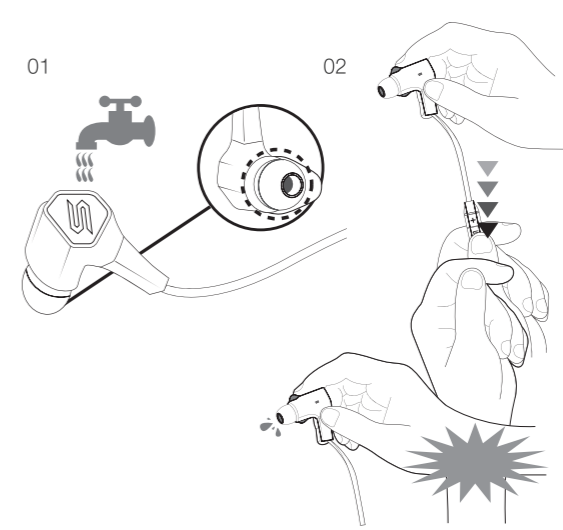
SPECIFICATIONS

Bluetooth Version: V4.0 + EDR with Apt-X decoder support
Profile: A2DP, AVRCP, HSP, and HFP.
Codec: mSBC
Range: 10 meters (33 feet)
Charging time (Full charge): Approx. 2 hours
Working time: up to 8 hours (Varies by volume and content)
Standby time: up to 10 days
Dimensions: 18H x 18W x 32D (mm) earphone size, 575mm cord length
Weight: 17g

WATER/SWEAT PROOF

- The earphone unit is not completely waterproof where the sound is output. Sound may become muffled if water gets inside.
- When this happens, hold the earphones as shown and pat 10-20 times to remove the water. Place a dry cloth underneath the earphones for 2-3 hours.
Please ensure the USB battery door is completely closed and locked securely before cleaning.

NOTE: Water/sweat resistance performance of your earphones is based on measurements stated in this manual. Malfunctions as a result by misuse by the customer are not covered by the warranty.



SOUL[®]

Compliance with FCC rules (U.S.A., only)

This device complies with Part 15 of the FCC rules. Operation is subject to the following two conditions:

(1) This device may not cause harmful interference, and (2) this device must accept any interference received, including interference that may cause undesired operation.

FCC WARNING

- Changes or modifications not expressly approved by the party responsible for compliance could void the user's authority to operate this equipment.
- Proper connections must be used for connection to a host computer and/or peripherals in order to meet FCC emission limits.

© 2013 Soul Electronics
www.soulelectronics.com