

User Manual



NOTE:

- **Please charge 10 HOURS before turning on the device.**
- For Spanish users, please go to "Control Panel", then go to "Clock, Language, and Region", then go to "Language" to change from English to Spanish Language OSD.

17.3" All in One

To assure the product to work in best status please read the guide carefully before operation and keep it well for future use

Thank you for purchasing iView products, for more information or to purchase new products, visit us on **WWW.IVIEWUS.COM**



Laptop with Touch – 360° Rotation

- ★ MEGATRON II (14,1" Intel Quad Core, Windows 10, 360° Rotation)
- ★ ULTIMA (13,3" Intel Quad Core, Windows 10, 360° Rotation)
- ★ MAXIMUS Plus (11,6" Intel Quad Core, Windows 10, 360° Rotation)
- ★ MAXIMUS IV (11,6" Intel Dual Core, Windows 10, 360° Rotation)



Intel Windows Laptop

- ★ 1410NB (14,1" Intel Quad Core, BT, Windows 10)
- ★ 1330NB (13,3" Intel Quad Core, BT, Windows 10)



Detachable Touch 2 in 1 Laptop

- ★ MAGNUS Plus (10,1" Intel Quad Core, Windows 10)
- ★ i1040QW (10,1" Intel Quad Core, Windows 10)



Windows Tablet

- ★ OPTIMUS (8" Intel Quad Core, Windows 10)



All in One

- ★ 1760AIO (17,3" Intel Dual Core, Windows 10, Desktop PC & Tablet)
- ★ 1780AIO (17,3" Intel Quad Core, Windows 10, Desktop PC & Tablet)
- ★ 2150AIO (21,5" Intel Quad Core, Windows 10, Desktop PC & Tablet)

Android Tablet

- ★ 1170TPC (10,1" Quad Core, BT)
- ★ 1070TPCII (10,1" Quad Core, BT)
- ★ 1066TPC-K (10,1" Quad Core, BT, BT Keyboard Case)
- ★ 1060TPC (10,1" Quad Core, BT)
- ★ 930TPC (9" Quad Core, BT)
- ★ 769TPCII (7" Quad Core, BT)
- ★ 766TPC-K (7" Quad Core, BT, BT Keyboard Case)
- ★ 733TPC (7" Quad Core, USB Keyboard Case Optional)
- ★ 730TPC (7" Quad Core, BT)
- ★ 711TPC (7" Quad Core, BT, Kid Sing Pad with Microphone)



3G Tablet

- ★ M7 (7" Quad Core with Phone, BT, GPS, 3G)



Converter Box

- ★ 3500STBII (Converter Box)
- ★ 3300STB (Converter Box)
- ★ 3200STB (Converter Box)
- ★ 3200STB-A (Converter Box, with External Antenna)
- ★ 3100STB (Converter Box)



The Smallest PC

- ★ CYBER PC Pro (Intel Quad Core, BT, Windows 10)
- ★ CYBER PC (Intel Quad Core, BT, Windows 10)
- ★ CYBER BOX (ATSC, Quad Core, BT, Android 7.1)

New Product



- ★ Smart Art Printer



- ★ Smart Vacuum



- ★ Smart Socket



- ★ Smart Bulb



- ★ Smart Sensor



- ★ Smart Camera



- ★ Fingerprint Padlock



- ★ Wireless Charger

iVIEW introduces the new 1786AIO Portable PC! This All in One Portable PC has a beautiful 17.3 inch multi-cap & IPS Screen which allows you to watch movies or view your favorite photos from any angle. The 1920x1080 High Resolution screen provides you with a crisp and bright display, perfect for your entertainment, or work needs. The Windows 10 Operating System, Intel® Celeron® Processor N4120 Quad Core CPU, and 4GB of RAM allow you to glide through your experience with the iVIEW-17806AIO. Storing your favorite content is made easy with 64GB of Internal Storage, or you can save up to 128GB more with the additional Micro SD card reader. Video chat is made easy with the 2.0 MP front camera and built in microphone. The iVIEW-1786AIO features a built in 2600 mAh battery allowing you the freedom to take it with you On-the-Go! If you are looking for a high performance 17.3" Portable PC, iVIEW-1786AIO is the best All in One Portable PC you can't miss out.

Notes

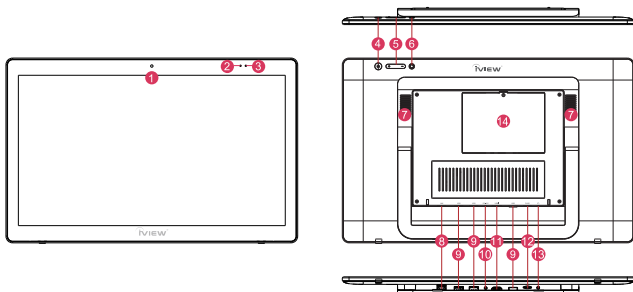
- * This product is highly electric. Do not dismantle.
- * Take necessary precautions to avoid dropping.
- * Store in a cool environment: avoid extreme temperatures, humidity, and dust. Keep product away from strong magnets and long-term exposure to the sun.
- * Clean the device by gently wiping the product with a damp cloth; the use of chemical cleaners is prohibited. Keep out of water.
- * When using headphones for long periods of time, be advised that high volume may cause permanent damage to hearing.
- * When using headphones, be mindful of your surroundings while traveling.
- * Only use permitted battery, charger and accessories. The use of any other type of product could damage the device and may be dangerous.
- * Please deal with waste machinery and accessories according to local environmental regulations.
- * If you have any questions about the product, please contact the store of purchase or iVIEW's customer service center directly.
- * Please follow the user's guide and backup your files. The company is not responsible for any data loss that may occur due to product damage.

Table of Contents

1. Product Overview	2
2. Keyboard & Mouse Setup	3
3. System Setup	4
3.1 Account Setup	4
4. Desktop Functions	5
4.1 Windows Start Menu	5
4.2 Basic Touch Screen Commands	5
4.3 Personalization	7
4.4 Action Center	8
4.5 Task View	9
4.6 Split-Screen	9
5. Additional Functions	10
5.1 Sleep, Restart and Shut Down	10
5.2 Recovery	10
5.3 Bluetooth	12
5.4 Account Management	12
6. Storage Expansion	13
6.1 Micro SD Card	13
6.2 Internal Hard Drive	13
7. Product Features	14
8. Accessories	14

1. Product Overview

iVIEW PC:



1. Main Camera.
2. Charging Indicator.
3. Power Indicator.
4. Power Button: Press and hold to power on / off. Tap it briefly to enter and wake from sleep mode.
5. Volume- / Volume+: Lower / raise Volume.
6. Reset Button.
7. Speakers.
8. RJ-45 Port: For Ethernet LAN.
9. USB 3.0 Port (3 in total).
10. 12V DC-in Charge Port.
11. HDMI: HDMI video output.
12. Micro SD Card Reader: Supports Micro SD and Micro SDHC format.
13. Earphone Jack: 3.5mm standard earphone jack can transmit the audio signals of laptop to earphone.
14. HDD Compartment: Supports 2.5" SATA or 2.5" SSD Internal Hard Drives.

2. Keyboard & Mouse Setup

Before powering on your device, follow the instructions below to set up your wireless keyboard and mouse.

The wireless receiver has been inserted to the USB port of device. If not, open battery cover on the mouse and remove the wireless receiver. You can find it located next to the battery compartment, shown in the picture below:



Insert the receiver in any of the device's USB Ports (shown in Section 1).



Insert batteries into the mouse and keyboard respectively, and re-attach battery covers. Battery sizes are as follows:

-Keyboard = 2 AAA Batteries

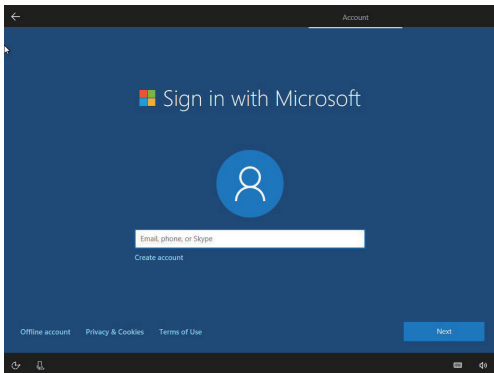
-Mouse = 2 AAA Batteries (Make sure the switch on bottom is on.)

You can set the mouse response speed by pressing the DPI button: Quick (1200DPI, default), Slow (800DPI).

3. System Setup

Windows will automatically help you set up your internet connection and system preferences.

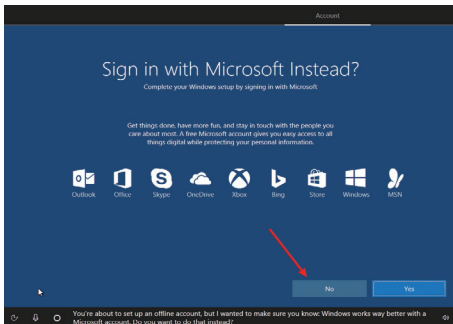
3.1 Account Setup



Once your network is set up, you'll be asked to set up an account. You can add an existing Microsoft account, or you can create one.

If you do not wish to create a Microsoft account at this time, you can select OFFLINE ACCOUNT near the bottom left-hand corner.


(NOTE: Some features, like the Microsoft store, will only be available using a Microsoft account.)



When creating an offline account, you'll be prompted with the screen above. Just select NO, and you'll be able to set up an offline user name and password.

4. Desktop Functions

4.1 Windows Start Menu

You can access the Windows Start Menu by clicking on the Windows Icon in the bottom-left corner of the screen, or by pressing the  key on your keyboard.

Some apps and functions will only be available using a Microsoft Account.



4.2 Basic Touch Screen Commands

Task View



Slide to the right from the left side of the screen to open Task View.

Action Center



Slide to the left from the right side of the screen to open the action center.

Zoom Out



To zoom out on an image or web page, place two fingers on the screen and pinch inwards.

Zoom In



To zoom in on an image or web page, place two fingers on the screen and pinch outwards.

Scroll up



In any menu or page, place finger and slide downwards to scroll to the top of the menu or page.

Drag & Drop



Tap on an App or File with your finger and slide sideways to move that file. Remove finger to place file in new location.

Scroll Down



In any menu or page, place finger and slide upwards to scroll to the bottom the menu or page.

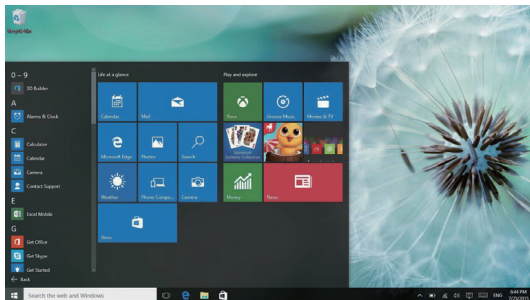
Context Menu



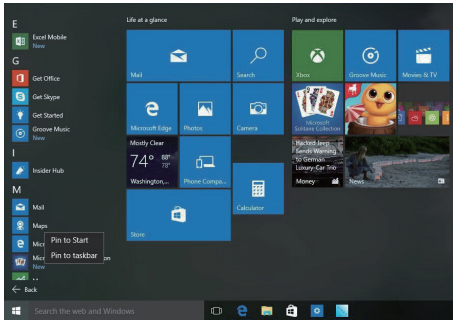
Place your finger on an app or anywhere on the screen and hold for 2 seconds, then release. Just like a right-click on a mouse, this will open a context menu.



4.3 Personalization

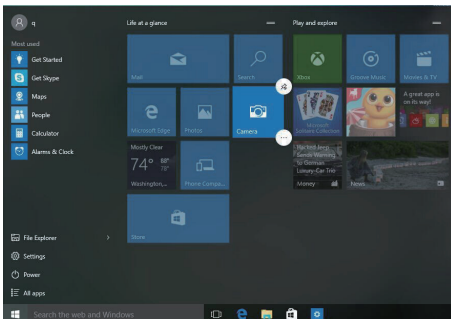
Your device comes with an assortment of pre-installed applications. You can view them all in the start menu, under "All Apps". You can also pin your favorite applications to the start menu or the taskbar for quick access.



If you would like to pin apps to the start menu, right-click, or tap & hold on an application until a menu pops up. From there, you can select “Pin to Start” or select the “More” option if you would like to pin the application to the taskbar.

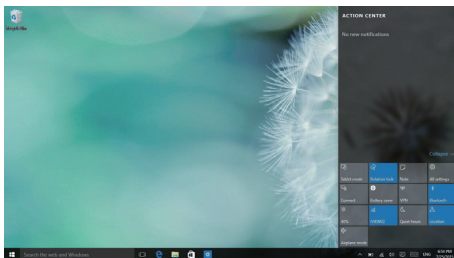


You can also unpin apps that you don't use, by right-clicking and selecting “Unpin”. If you're using the touch screen, tap and hold the pinned application for about one second, click  to unpin it from the Start Menu or Taskbar. You can also click  for additional options.




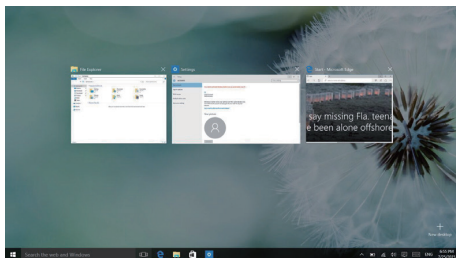
4.4 Action center

From the right side of the screen, place and slide your finger to the left to open the Action Center. Here, you are able to monitor your device's status, access settings, connect to a Bluetooth device, etc.



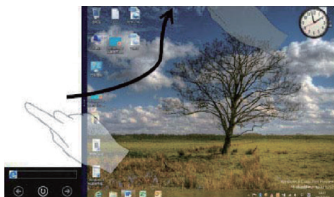
4.5 Task View

From the left side of the screen, place and slide your finger to the right to open Task View. This will display all applications currently running on your device. Click  on an application to close it.

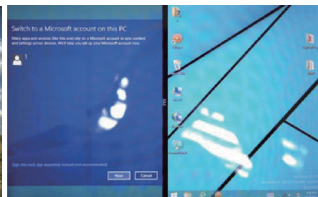


4.6 Split-Screen

If you want to split-screen two applications at the same time, open the two apps you want to use, making sure one of them is full screen. Tap and hold to drag an app to the left side of the screen (Figure 1) to dock it. Select the second app to open on the right side. In (Figure 2), you can press and slide the bar in the center to partition screen space between the two apps.



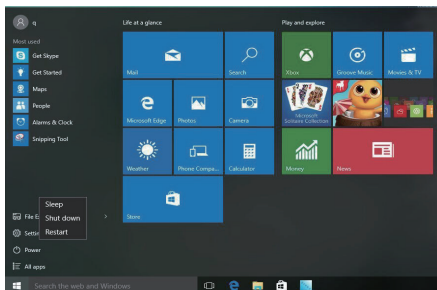
(Figure 1)



(Figure 2)

5. Additional Functions

5.1 Sleep, Restart and Shut Down



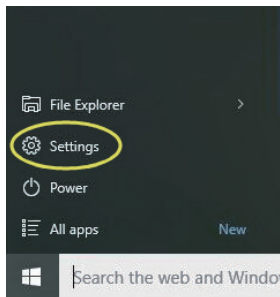
● Forced Reset / Shutdown

If the tablet freezes, you can press and hold the Power button for 8~12 seconds. The tablet will shutdown automatically.

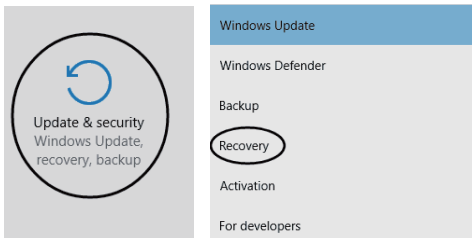
5.2 Recovery

When your device is not performing well, you can perform a Windows Reset. (NOTE: This WILL erase all your data and revert back to factory settings)

First, click on the start icon, or press the  key on your keyboard. This will bring up the start menu. Select SETTINGS.



You'll then be brought to the SETTINGS Window. At the bottom, select UPDATE AND SECURITY, followed by RECOVERY.



Select the Get Started Button underneath RESET THIS PC.

Reset this PC

If your PC isn't running well, resetting it might help. This lets you choose to keep your personal files or remove them, and then reinstalls Windows.

Get started

You will be prompted TWICE. First, select, REMOVE EVERYTHING.

Choose an option

Keep my files

Removes apps and settings, but keeps your personal files.

Remove everything

Removes all of your personal files, apps, and settings.

When Prompted again, select JUST REMOVE MY FILES.

Do you want to clean the drives, too?

Just remove my files



This is quicker, but less secure. Use this if you're keeping the PC.

Remove files and clean the drive

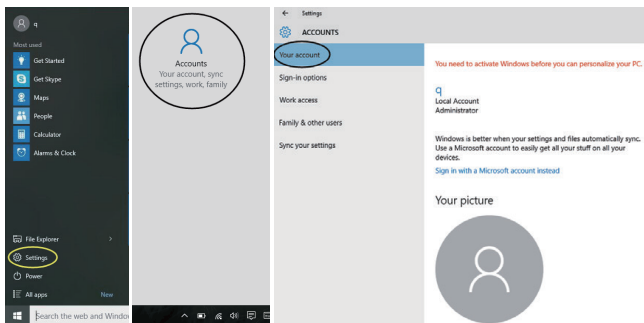
This might take a few hours, but will make it harder for someone to recover your removed files. Use this if you're recycling the PC.

Make sure your device is plugged in, and select RESET. The reset process will take roughly an hour.

5.3 Bluetooth

- a) Turn on Bluetooth by opening the action center and tapping on the Bluetooth Icon.
To pair a device, tap and hold the Bluetooth icon until the option “Go to Settings” pops up. Select it. Your device will automatically look for devices to pair.
- b) Sending Files: To send files, click on the Bluetooth  icon on the lower right corner of the desktop. Click “Send a File” and follow the instructions provided by Windows.
- c) Receiving Files: To receive files, click on the Bluetooth  icon on the lower right corner of the desktop. Click “Receive a File” and Windows will scan for Bluetooth connections.

5.4 Account management



Account Options:

Open the Start Menu by clicking on the Windows icon at the bottom-left corner of the screen. Select “Settings” followed by “Accounts.” On the right side of the window, you can create an offline account or set up a Microsoft Account for your device. Under “Sign-In Options”, you can change your password or add additional verification methods (PIN number, picture, etc.)

You can also select “Family & Other Users” to add additional users to your device.

6. Storage Expansion

The device comes with 64GB of internal storage. However, you can use one or both of the following methods to further expand the storage of your device.

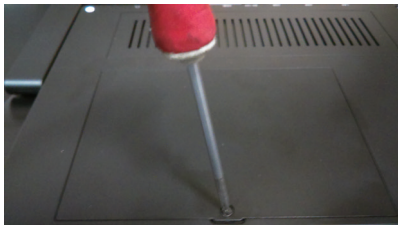
6.1 Micro SD Card

You can expand your device's storage space by inserting a Micro SD Card into the CARD slot of your device. Make sure to firmly push the SD Card into the slot until it clicks. The device supports Micro SD cards up to 128GB.



6.2 Internal Hard Drive

Your device comes with a hard drive port in the back of the device (shown in Section 1). Before installing a hard drive, make sure your device is powered off and unscrew the cover, using a Phillips screwdriver.



Once the screw is removed, the lid can pop open. Insert a 2.5 inch hard drive or SSD drive into the compartment and slide it into the connector. Once connected, re-attach and screw-in lid.



7. Product Features

- * Screen: 17.3" Touch Screen, 1920 x 1080 IPS High Resolution
- * Processor: Intel® Celeron® Processor N4120, Quad Core, 1.1GHz, up to 2.6GHz
- * OS: Windows 10 Pro
- * Memory: 4GB
- * Storage: 64GB
- * Wireless Connection: WIFI 802.11 ac/a/b/g/n (2.4GHz & 5GHz)
- * Build in Bluetooth 4.0
- * Camera: 2.0MP
- * Support Skype Video Call
- * Support 1080P Full HD Video
- * I/O Port : USB 3.0 x 3 / HDD x 1 / RJ45 x 1 / HDMI x 1
- * Card Slot: Micro SD Card (Max: 128GB)
- * Audio Output: Stereo Speaker (4Ω 2.0W) x 2 / 3.5MM Stereo Headphone Jack
- * Windows Store, Office Work, Internet Browser, Calendar, Calculator, E-mail, etc.
- * Picture Viewing, Music / Video Playback, Games, etc.
- * Supports Multi Languages
- * Battery: Built in 2,600 mAh / 7.4V Li-ion, Rechargeable
- * Power Source: 12V \equiv 3A

8. Accessories

Below items are included in your package:

- * All-in-One PC
- * Power Adapter
- * User Manual
- * Wireless Keyboard
- * Wireless Mouse
- * Handbag

Basic warranty Statement

This product is warranted to the original purchaser ONLY, to be free from defects in materials and workmanship under normal use, for **ninety (90) DAYS** (parts and labor) and **one (1) YEAR** (parts only) from the date of original purchase. We agree under the warranty period to replace product if it is determined to be defective at "No Charge" This limited warranty does not cover any loss or damages that occur as result of:

- Cosmetic damage.
- Shipping or improper installation or maintenance.
- Misuse.
- Neglect.
- Any cause other than ordinary commercial or industrial application.
- Adjustment by non-authorized source or any of the products firmware or hardware that you or any third party have modified or altered.
- Improper environment.
- Excessive or inadequate heating or air conditioning or electrical power failures, surges, connection to improper voltage supply or settings or other irregularities.
- Accidents, acts of God.

In the United States and Canada contact Customer Service at www.iviewus.com

*** Please note that in order to have your merchandise repaired and replaced by warranty, you must contact our customer service representatives by email, and get RMA number.**

To obtain factory service, the original purchaser MUST present the following:

1. A sales receipt/proof of purchase indicating date of purchase.
2. Your Name. Place of Purchase. Address. Unit Model, and Description of Problem.
3. Send the unit pre-paid to the address below in the original packaging or reasonable substitute to prevent damage. **No return will be shipped back to a PO BOX.**
4. All of the accessories that came with the product package must be sent along with the main unit.
5. Please include your check or money order in the amount of **\$30.00** to cover handling and return shipping charges We will not be responsible for delays or unprocessed claims resulting from purchaser's failure to provide any or all of the necessary information.
6. There is Additional Shipping Charge for areas outside of United States. For shipping charge please consult with our customer service.

***Please review your user
guide carefully before
using this product.***

*Additional troubleshooting information
can be found on the web at:*

***www.iviewus.com and click on “Support”
or email us at support@iviewus.com***

FCC Warning Statement

Changes or modifications not expressly approved by the party responsible for compliance could void the user's authority to operate the equipment. This equipment has been tested and found to comply with the limits for a Class B digital device, pursuant to Part 15 of the FCC Rules. These limits are designed to provide reasonable protection against harmful interference in a residential installation. This equipment generates uses and can radiate radio frequency energy and, if not installed and used in accordance with the instructions, may cause harmful interference to radio communications. However, there is no guarantee that interference will not occur in a particular installation. If this equipment does cause harmful interference to radio or television reception, which can be determined by turning the equipment off and on, the user is encouraged to try to correct the interference by one or more of the following measures:

- Reorient or relocate the receiving antenna.
- Increase the separation between the equipment and receiver.
- Connect the equipment into an outlet on a circuit different from that to which the receiver is connected.
- Consult the dealer or an experienced radio/TV technician for help.

FCC Radiation Exposure Statement

The antennas used for this transmitter must be installed to provide a separation distance of at least 20 cm from all persons and must not be co-located for operating in conjunction with any other antenna or transmitter.