

Consulting the history

Print-out history



Prêt 16/10/14 13:12:26

Historique > Impression

Nom du job	Date - Heure de début	Date - Heure de fin	Compte d'impression
TOMATOES	16/10/2014 09:02:49	16/10/2014 10:26:33	190

Retour Total impressions Transfert OK

Maintenance history



Prêt 16/10/14 13:21:22

Historique > Maintenance

Type	Numéro de lot	Date - Heure	Compteur machine (h)	Compteur CE (h)
Switch-pression		16/10/2014 13:17:32	0	0
Cartridge holder		16/10/2014 13:17:43	0	0
Pump-pression-standard-ink		16/10/2014 13:17:52	0	0

Retour Transfert OK

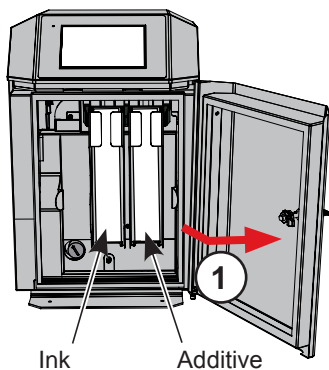


Replacing the consumables

Only if:

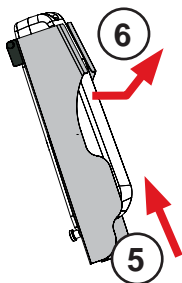
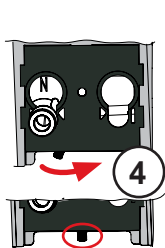
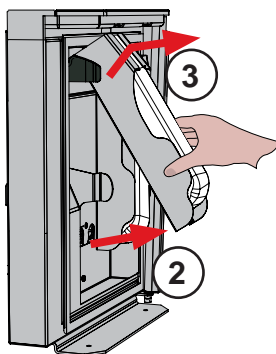
Replace ink cartridge

Replace ink cartridge



Replace additive cartridge

Replace additive cartridge



Repeat operations **1** to **6** in reverse order.

The ink cartridge drains completely into the printer's internal tank in 45 minutes.

Pigmented ink: shake the cartridge before fitting.

! Only use Markem-Imaje consumables.



G Head cleaning



Ready

Prêt 17/10/14 10:13:36

Opérations sur la tête

Etat jet	Écoutelement	Référence viscosité (g)	25 g
Vitesse jet (mm)	20	Viscosité (g)	25 g
Pression (bars)	3.05	Niveau de récupération	0
Vitesse moteur (tr/min)	1500	Valeur piezo	260
Température encres (°C)	51	Nombre phase active	0
Température tête (°C)	61	Niveau d'encre (mm)	10
Compteur machine (h)	4	Compteur circuit d'encre (h)	0
Remplacement kit tête	24 / 09 / 2013	Remplacement kit maintenance (h)	14838

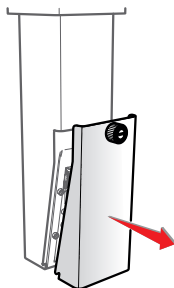
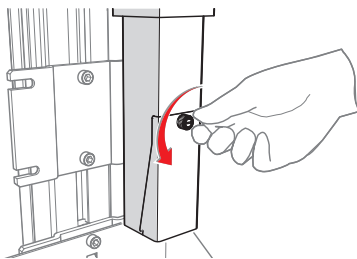
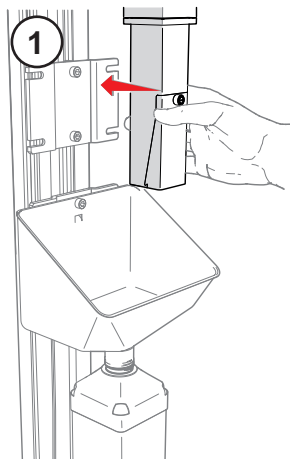
Arrêt Débouçage boîtier Intro. adhésif Contrôle Stabilité Rafraîchissement Ajuster point de tirage OK

Jet stopped

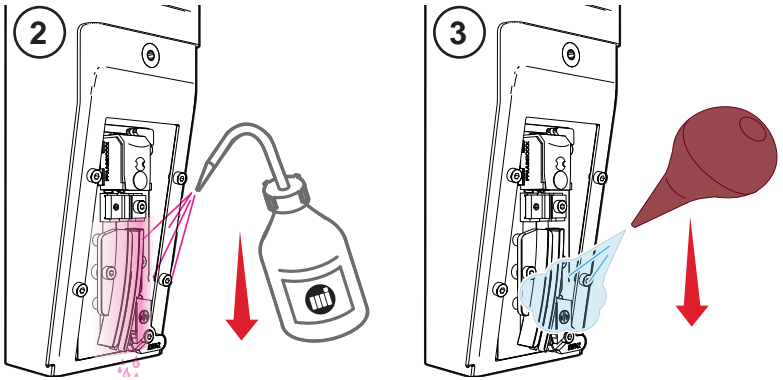
Jet arrêté 17/10/14 10:13:36



Only use Markem-Imaje cleaning fluid.



G Head cleaning



Jet stopped



Ready



When using certain inks or operating the printer in harsh environments (hot and/or dusty environments), you will need to clean the head thoroughly. See user manual or Sheet A47081.



M Head cleaning



Ready

Prêt 17/10/14 10:13:36

Opérations sur la tête

Etat jet	Écoutelement	Référence viscosité (g)	25 g
Vitesse jet (m/s)	20	Viscosité (g)	25 g
Pression (bars)	3.05	Niveau de récupération	0
Vitesse moteur (tr/min)	1500	Valeur piezo	260
Température encres (°C)	51	Nombre phase active	0
Température tête (°C)	61	Niveau d'encre (mm)	10
Compteur machine (h)	4	Compteur circuit d'encre (h)	0
Remplacement kit tête	24 / 09 / 2013	Remplacement kit maintenance (h)	14838

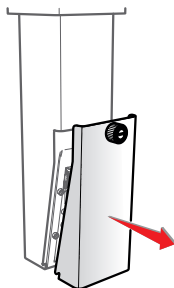
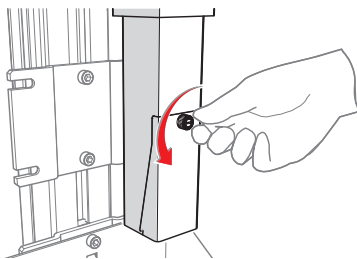
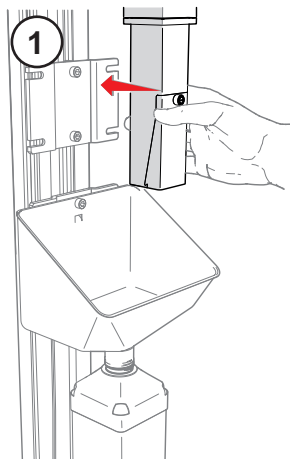
Arrêt Débrancher le câble Intro. adhésif Contrôle stabilité Rafraîchir Ajuster point de tirage OK

Jet stopped

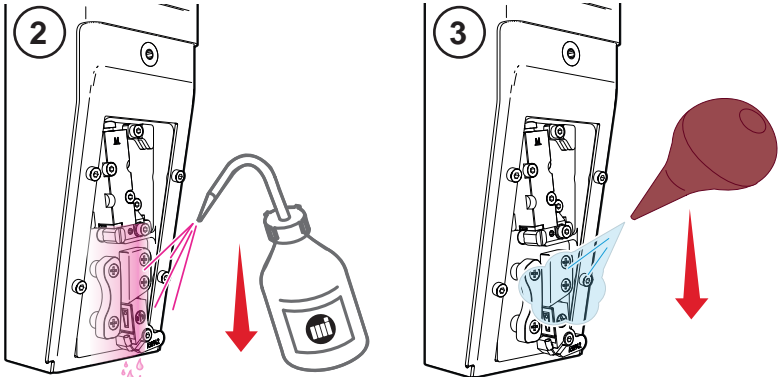
Jet arrêté 17/10/14 10:13:36



Only use Markem-Imaje cleaning fluid.



M Head cleaning



Jet stopped



Ready



When using certain inks or operating the printer in harsh environments (hot and/or dusty environments), you will need to clean the head thoroughly. See user manual or Sheet A47081.



Troubleshooting

Alarm



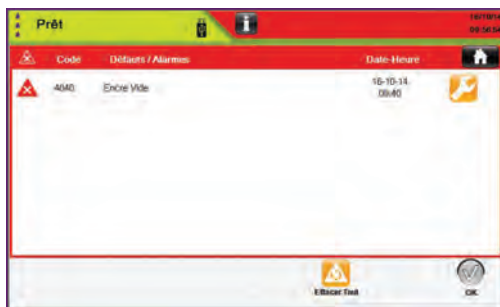
Fault: printing not possible



Consult the troubleshooting screens (if available)



Acknowledge the fault or alarm



Acknowledge all faults and alarms





S/N: Serial number: _____

Additive ref.: _____

Ink Ref.: _____



For Marking & Coding Equipment. Photographs and drawings are not binding in detail. This document was originally written in French. The French text of this document shall alone be authentic and shall prevail in the event of a dispute. Markem-Imaje reserves the right to modify the specifications of its products without prior notice. Any reproduction, even partial, of this document is prohibited. Translation of the original manual: the original manual (in French) is available on the DVD supplied with the printer.

© 2014 Markem-Imaje All Rights Reserved. English version



the team to trust ■ ■ ■

User Documentation Department

en

10/2014 - A



A48552

www.markem-imaje.com

Markem-Imaje Industries
9, rue Gaspard Monge - B.P. 110
26501 BOURG-LES-VALENCE
Cedex - France
tel 33 (0)4 75 75 55 00
fax 33 (0)4 75 82 98 32

