

MOTORIZED SHADES



SPRINGS WINDOW FASHIONS
the Best Experience Company

TABLE OF CONTENTS

How to Install Your Motorized Shade

| | |
|---|---|
| How to Install Your Motorized Shade | 3 |
| How to install your battery pack | 4 |
| How to install your plug-in transformer | 5 |
| Mounting your remote | 6 |

Quick Start Guide: Motorization App Setup

| | |
|--------------------------------------|----|
| Motorization App Setup | 8 |
| Controlling Your Shades Via App..... | 10 |

Setting Up Your Remote Without Gateway Device

| | |
|---|----|
| Getting Your Remote Ready | 14 |
| Knowing Your Shade's Limits and Home Position | 15 |
| Controlling Your Shade..... | 16 |
| Assigning Shades to Channels (Premium Remote)..... | 18 |
| Gateway Device..... | 19 |

Controlling your Shades

| | |
|----------------------------|----|
| Motorization App..... | 20 |
| Standard Remote | 20 |
| Plus Remote | 21 |
| Premium Remote | 22 |
| Shade Program Button | 23 |

Adjusting Your Shade's Limits and Home Position

| | |
|----------------------------------|----|
| Adjusting the Upper Limit..... | 25 |
| Adjusting the Lower Limit..... | 28 |
| Adjusting the Home Position..... | 31 |

Pairing Your Remotes and Shades

| | |
|--|----|
| Pairing Your Standard Remote or Plus Remote..... | 38 |
| Pairing Your Premium Remote | 42 |
| Getting Started with the Motorization App and Gateway..... | 47 |

TABLE OF CONTENTS

Integrating Your Shades with a Z-Wave® Home Automation System

| | |
|---|----|
| Step 1: (Exclude) Remove the Current Pairing Between Your Shades and Remotes..... | 56 |
| Step 2: (Include) Add Your Shades and Remotes to the Home Automation System..... | 57 |
| Step 3: (Associate) Pair Remotes with Your Shades..... | 59 |
| Firmware Update | 60 |
| Shade Recovery | 61 |

Troubleshooting

| | |
|-------------------------------------|----|
| Remotes and Power... .. | 62 |
| Gateway... .. | 65 |
| Motorization App and Bluetooth..... | 70 |

Glossary

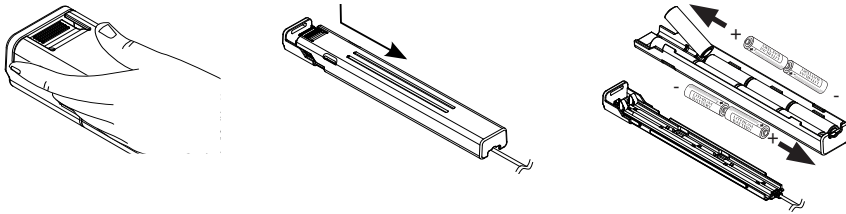
About Z-Wave

Channel Assignment Worksheet

How to Install Your Motorized Shade

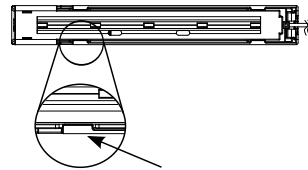
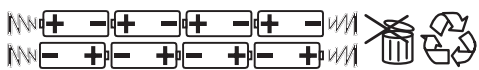
Battery pack location and installation

1. If installing the non-rechargeable solution (battery case), remove the battery case lid and insert batteries



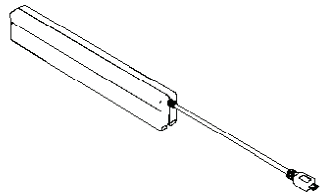
- a. Reattach the battery case lid to the battery case base by aligning the pegs with the slots.

Use only 8 AA Lithium batteries. 12 volts. Caution: Batteries must be installed as shown. Failure to do so may result in injury and will invalidate warranty. Do not mix type, brand, or old with new. Do not attempt to recharge.



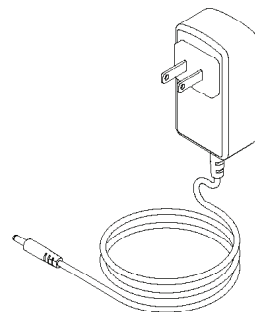
- 1a. If installing the rechargeable battery pack, the sealed battery pack is included and cannot be opened

NOTE: The rechargeable battery pack will be approximately 30% charged. Each pack will need to be charged to 100% before installing.



- 1b. Plug in li-ion battery charger to rechargeable battery pack

The LED will change to red to indicate charging. When the pack is fully charged, the LED will change to green. When fully charged, unplug the charger.



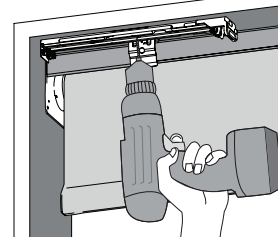
How to Install Your Motorized Shade

How to install your battery pack

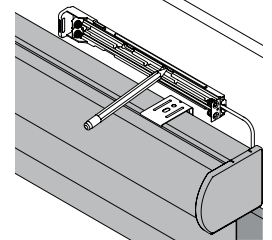
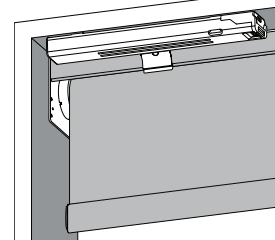
Determine inside, inside with space-saving hanger, or outside mount; then follow directions for that mounting style

Mount reloadable battery case directly to surface

2. Mark and predrill screw holes; secure back plate

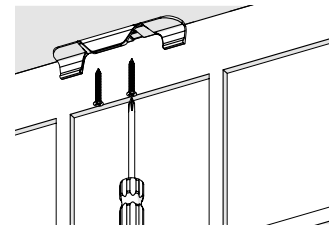
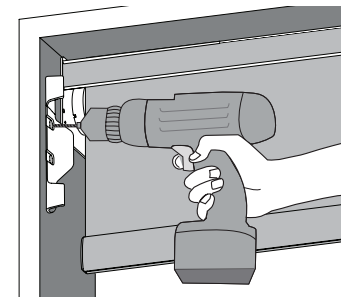
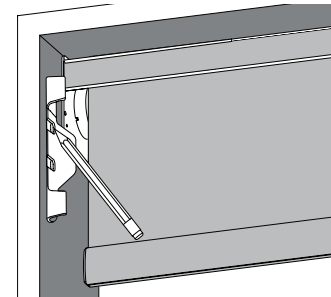


Non-rechargeable inside mount shown, rear view



Outside mount

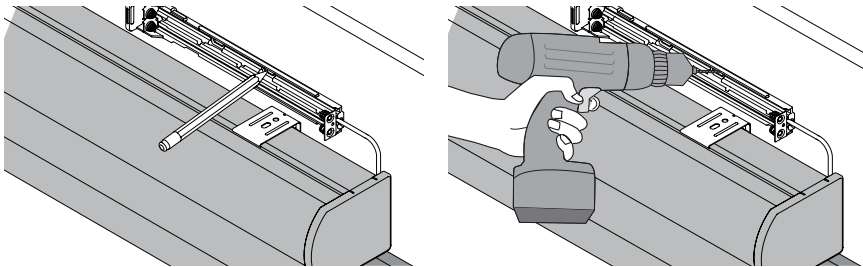
- 2a. Mark and predrill screw holes, secure hanger



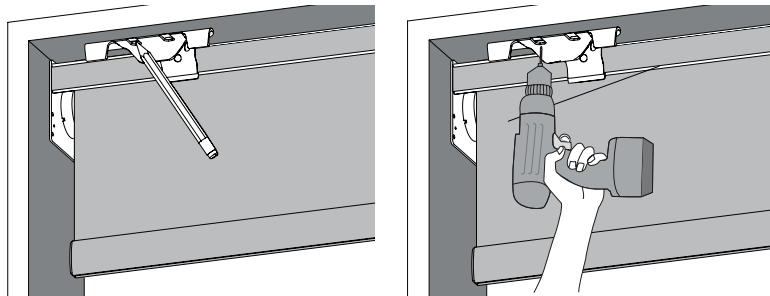
Rear view

How to Install Your Motorized Shade

How to install your battery pack

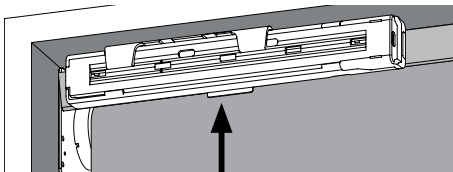


Non-rechargeable front view



Rear view

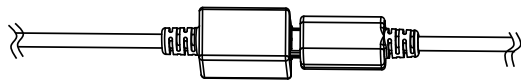
2b. Snap battery pack into hanger



Rear view

NOTE: Dual battery can be connected end to end. The rechargeable battery pack is not available with dual option.

2c. Connect battery wire connector to motor lead



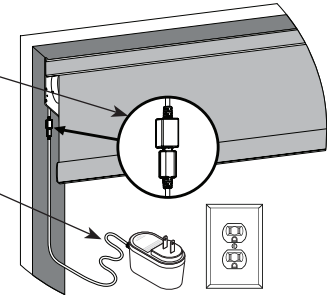
How to Install Your Motorized Shade

How to install your plug-in transformer

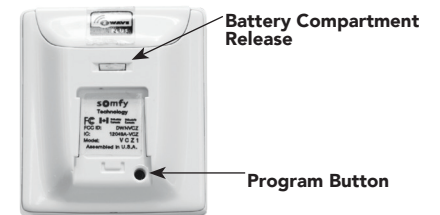
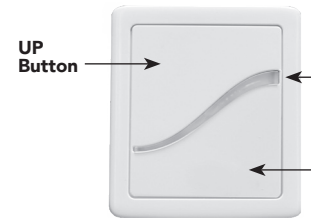
Plug-in transformer installation

5. Insert plug-in transformer into outlet. Connect plug-in transformer wire connector to motor lead. Insert plug-in transformer into outlet.

NOTE: Wire management components are not included, but can be purchased at a local hardware store or home improvement center to help disguise the power cord when using a plug-in transformer.



TWO-BUTTON REMOTE



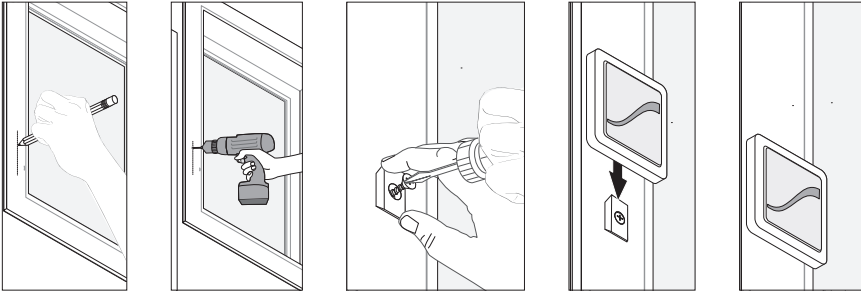
NOTE: Not available with sheer or layered shades

How to Install Your Motorized Shade

Mounting your remote

Mark screw location. Drill hole. Screw into place.
Snap bracket into mount. Insert remote.

TWO-BUTTON REMOTE

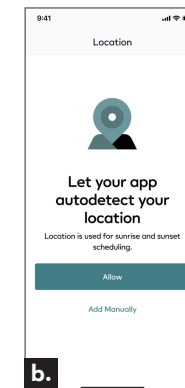
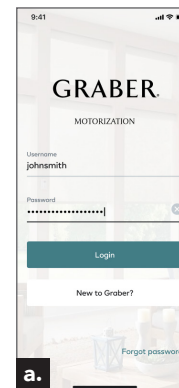


Motorization App Setup

Your shades come with embedded Bluetooth and Z-Wave capabilities. Bluetooth allows you to operate locally from a phone or tablet device without a remote or gateway device. Z-Wave allows you to operate your shades with a remote and pair them with third party services like Amazon Alexa or Google Home. Third party integration requires the gateway device. A single gateway can optimally control up to 8 devices (7 shades + 1 remote). If exceeding this number of devices, simply add additional gateways to your account as necessary.

To pair your shades directly to your phone via Bluetooth:

1. Download and install the Motorization app on your iOS or Android device.
 - a. Once downloaded, click “New to Motorization” to create your account or log in to your existing account.
 - b. Create your username and password.
 - c. Set your location manually or automatically.



All set! From here, you can start adding Bluetooth shades

Motorization App Setup

- Your shades come from the factory with limits set and ready to be paired with your phone. See more information about limits on page X.

- Ensure your shades are installed and powered on.

- Once powered, they are automatically in pairing mode.

- Initial Graber Product setup screen will be prompted once account is created. You will choose to either add a Graber Gateway or to pair a shade without a Graber Gateway (use for Bluetooth shades).

- In the app, navigate to the "Shades" tab on the bottom and select the "+".

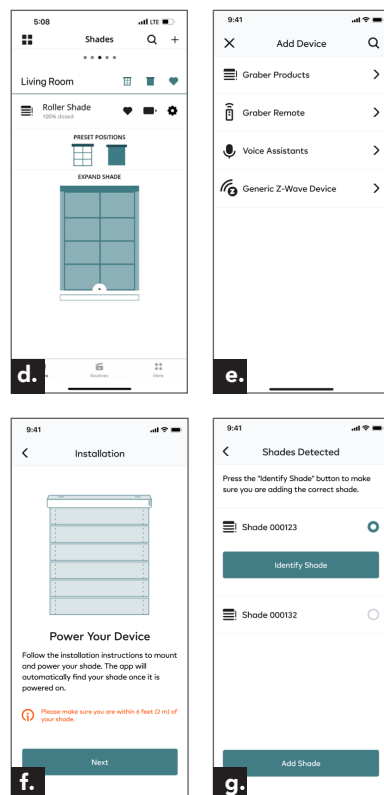
- Select "Graber Products".

- Ensure your shade has power and select "Next".

- All shades in range will show up on this screen. Keep in mind when pairing shades without a gateway, only shades within Bluetooth range will display.

- To identify a specific shade, select that shade and tap "Identify Shade". The shade will jog (a brief up/down movement) and the program button will blink blue to identify itself.


- Select one or multiple shades to add with the radio buttons on the right. Select "Add Shade".

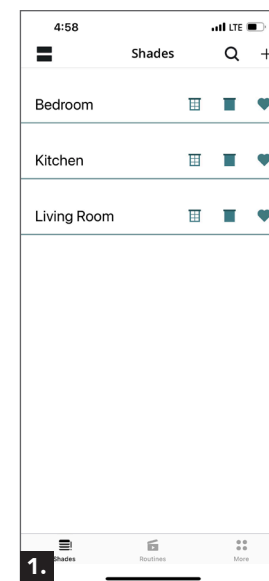



All set! From here you can name your shades, create rooms, schedule routines, etc.

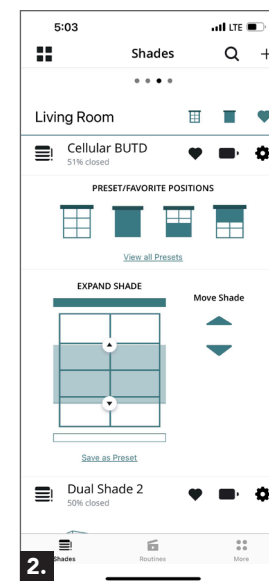
Controlling Your Shades Via App

Navigating The App

- You can control your shade
 - with Room Control or b.) by individual shade
 - To use Room Control, select the Closed/Open/Favorite icon for the room you'd like to control
 - Select the  in the top left to switch to the individual shade view



- To control your shades individually, switch to the individual shade view by following step 1.b. above
 - To view all shades within a room, scroll up and down
 - To switch from room to room, swipe left or right
 - Instructions for controlling individual shades are listed below based on shade type
 - To switch back to room view, select the  in the top left



Controlling Your Shades Via App

Standard Shades

1. Standard shades can be controlled with the slider, the preset open/closed/favorite positions, or scheduled with routines

- a. To control the shade, simply slide the arrow to the desired position or select the desired open/closed/favorite icon

You can also control all shades grouped in a room with the Closed/Open/Favorite icons at the top of the screen



Bottom-Up, Top-Down Shades

1. Bottom-up, top-down shades can be control via:
 - a. Slider: Simply slide the arrow to the desired position for either rail.

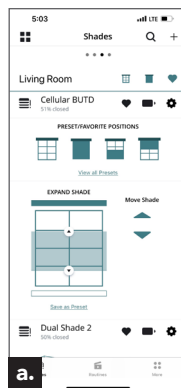
Note that sliding functionality can only be used when moving one rail away from the other.

- b. Open/Closed/Top Stack/Bottom Stack presets: Select the icon to move shade to that position. Top and Bottom stack positions can be customized in shade settings

- c. Up/Down arrows that control both rails simultaneously: To move both rails up or down together, select the up or down arrows. Each press will move the rails 5%.

Note: your screen will update to show the shade position. Once released, the shade will receive the command and move to that location.

- d. Additional User-set presets: You can set up to 6 additional presets. To set a new preset, first move the shade to the desired position and then select "Save as Preset".



Controlling Your Shades Via App

Dual Shades

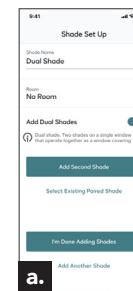
1. Dual shades are a type of shade that combines two solar/roller shades in a single window. Typically a sheer/light filtering and room darkening/blackout shade are paired.

- a. To create a dual shade configuration within the app, toggle "Add Dual Shade" during shade setup process.

- b. Select "Add Second Shade" to add a new shade or "Select Existing Paired Shade" to add an existing shade

- c. Dual shades are operated the same way as standard top-down shades:

- To control each shade individually select "Front Shade" or "Back shade" and then use the appropriate slider to move to the desired position
- To control both shades simultaneously, use the Closed/Open/Favorite preset icons. Designating front and back shades can be configured anytime in the shade settings.

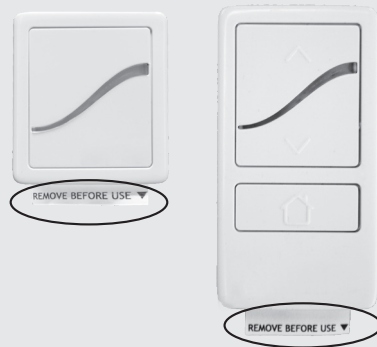


GETTING YOUR REMOTE READY

Note: If you did not order a gateway, your remotes will be paired directly with your shades. If you purchased or are setting up a gateway, remotes will be paired through the gateway to control your shades. Instructions on setting up the gateway with remotes are found below.

For the Standard Remote or Plus Remote

Pull out the paper strip on the back of the remote.



For the Premium Remote

1. Remove the battery door.
2. Insert 2 AAA batteries.
3. Replace the battery door.



Knowing Your Shade's Limits and Home Position

To help you get started quickly and easily, we set your shade up with predefined limits.

Upper Limit: The highest position your shade can reach. We pick a position that gives you the best view and also protects your shade from damage.



Lower Limit: The lowest position your shade can reach. This matches the shade length you ordered.



Home/Favorite Position: The HOME position is automatically set at to the midpoint of your shade. This can be adjusted to any point between the upper and limits

Not available with the standard remote.



Layered Shade Home position is with the shade lowered with stripe open.

Sheer shade Home position is with the shade down and the vanes closed.

You can adjust each of these positions to fit the needs of your home—just follow the instructions in the **Adjusting Your Shade's Limits and Home Position** section on page 13.

Controlling Your Shade with Remote

We preprogrammed your remotes to operate your shades. If you ordered a premium remote, see page 19 to assign each shade to a channel.

| Legend | | | |
|--------|-------------------|---|-----------|
| ● | Press and hold | ⬆ | Move up |
| ⦿ | Press and release | ⬇ | Move down |

Open Your Shade Completely

Press and **release** the UP button.



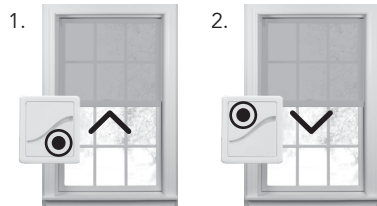
Close Your Shade Completely

Press and **release** the DOWN button.



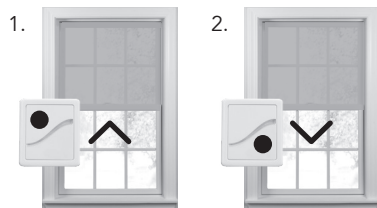
Stop Your Shade While It's Moving

- While your shade is moving up, press and release the DOWN button or the HOME button.
- While your shade is moving down, press and release the UP button or the HOME button.



Adjust Your Shade

- Press and **hold** the UP button to move the shade up.
- Press and **hold** the DOWN button to move the shade down.
- Releasing the button will stop the shade.



Move Your Shade to the Home or Favorite Position

Press and **release** the HOME button.

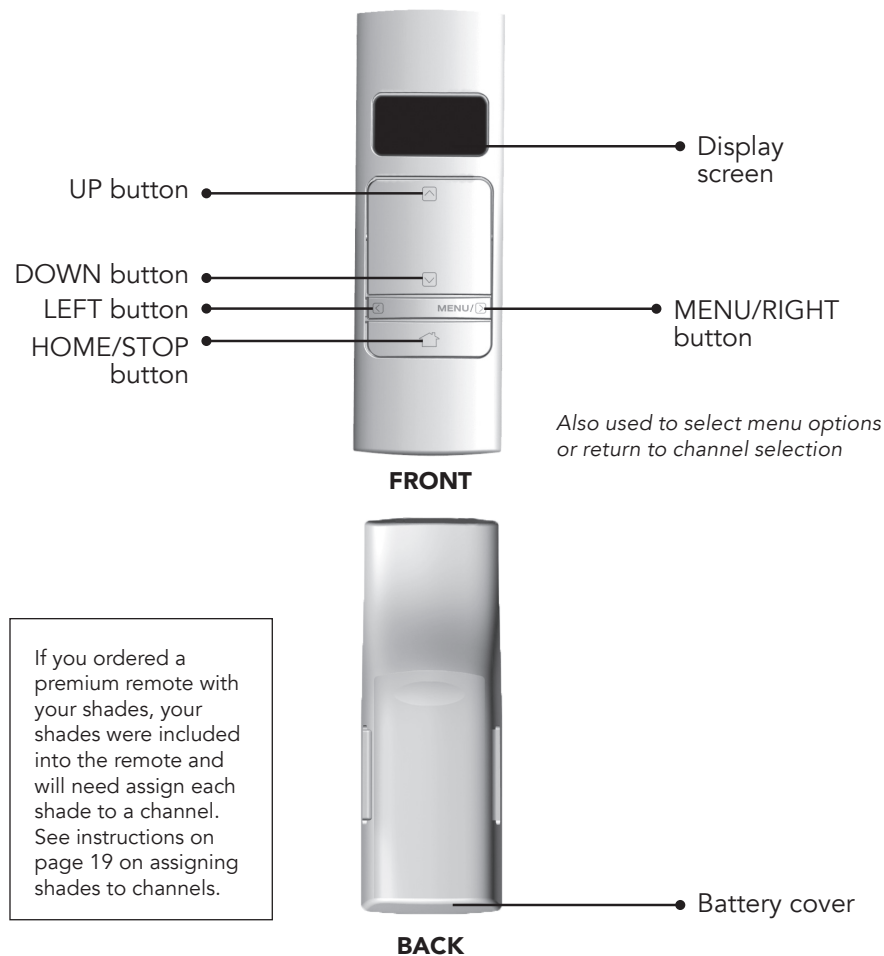
Not available with the standard remote.



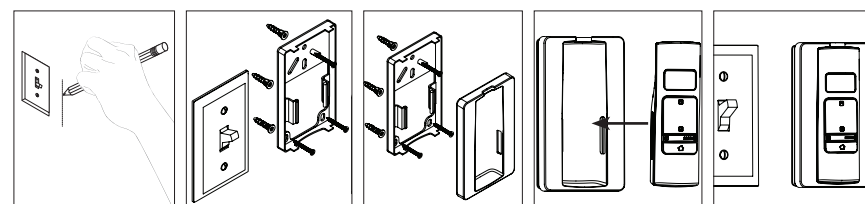
Premium Remote

Bottom Up/Top Down shades are exclusive to the premium remote. To control the bottom rail, single click the up/down buttons. To control the midrail, double click the up/down buttons.

Note: Rail control does not allow for rails to be moved toward each other.



MULTI-CHANNEL REMOTE



Assigning Shades to Channels (Premium Remote Only)

If you bought your shades and premium remote at the same time, your shades arrive already paired with your premium remote. However, you'll need to assign each shade to a channel (or multiple channels) to control them. Before beginning, we recommend that you complete the chart on page 61 to identify each shade number within the remote with your shade location/tag and preferred channel.

1. Press and hold the MENU/RIGHT button for 2 seconds to enter the menu.
2. Select CHANNEL.



3. Select the channel you want to assign the shade to by scrolling left or right.
4. Select the shade you want to assign to the channel by scrolling up or down.



5. Press and hold the MENU/RIGHT button for 2 seconds.
The shade will jog and a checkmark will appear next to the shade number on the remote screen.
6. Repeat steps 3–5 for each shade.



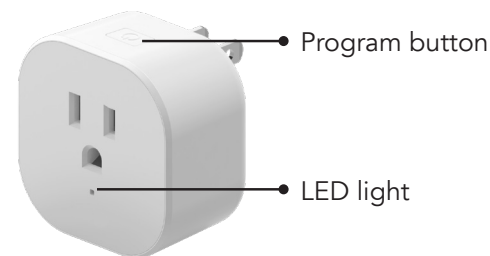
NOTE

Maximum of 8 shades per channel.

Gateway Device

The Gateway device is an optional upgrade for control in the Motorization app. This device allows you to control your shades remotely when you aren't at home and integrate with third party services. Note: If you are using remotes AND a gateway device, the remotes must be paired through the gateway device.

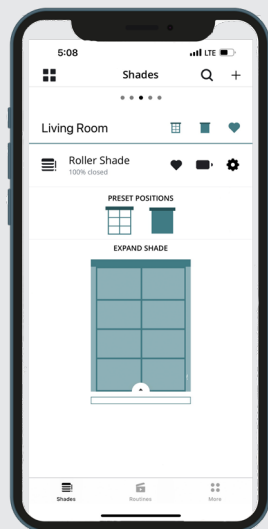
- Plug gateway into an outlet.
- The Gateway must be setup on a Wi-Fi network that is a password protected **2.4GHz**, (5GHz, and unprotected hot spots are not supported).
- Each Gateway can control up to 8 devices (shades, remotes, etc.) for optimal performance.
- Multiple Gateways can be added to one account to control more shades. A shade cannot be added to more than one gateway at a time.
- The gateway will cover ~2500 square feet (60-100ft) depending on a variety of factors including the number of walls, material of walls, etc.



CONTROLLING YOUR SHADES

Motorization App

You can control your shades directly from your smartphone or tablet with Bluetooth. No dedicated remote necessary. Download the app from the App Store or Google Play store to get started. The app allows you to control all shade movements as well as schedule basic routines.



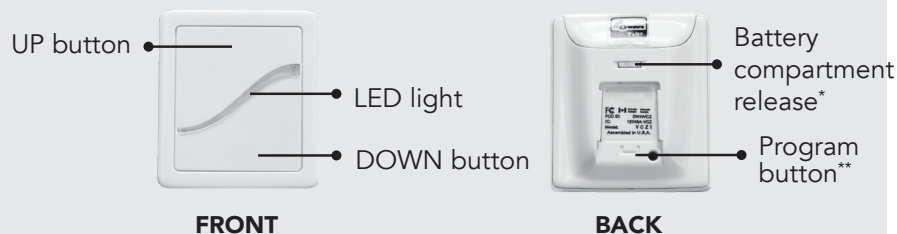
NOTE

For Bottom Up/ Top Down shades, see Premium remote information on page 22.

Standard Remote

The standard remote is used to control a single shade. It can also be used to control up to 12 shades at once.

NOTE: Not available with Sheer or Layered Shades.

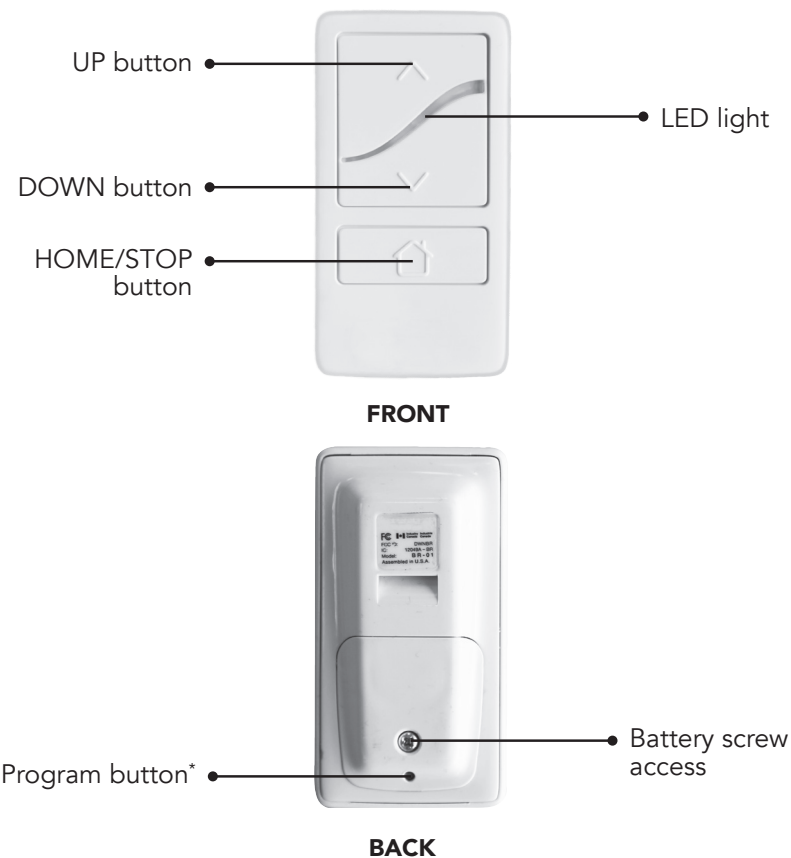


*Requires a screwdriver or similar tool to open.

**Press with a paper clip or similar tool.

Plus Remote

The plus remote can control up to 12 shades in a group performing the same function.



*Press with a paper clip or similar tool.

SINGLE-CHANNEL REMOTE

