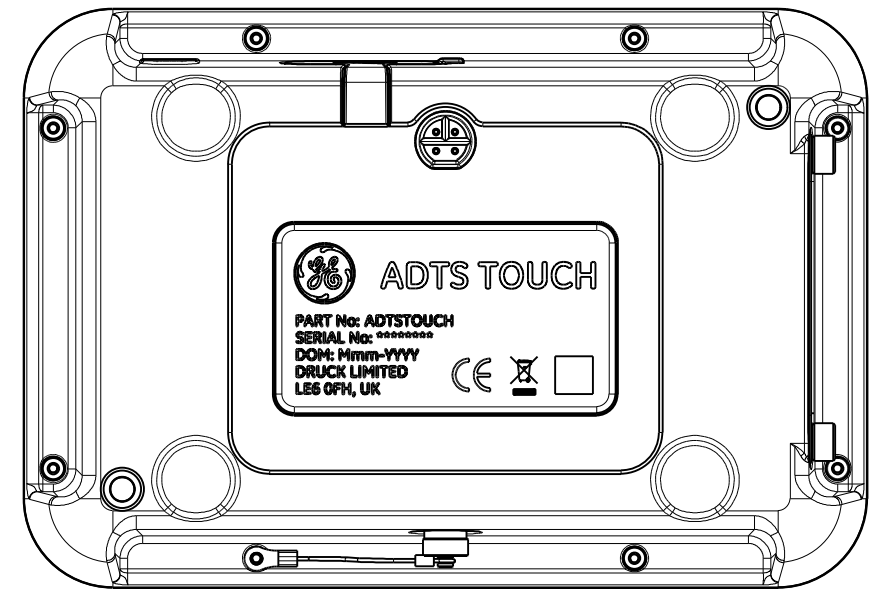
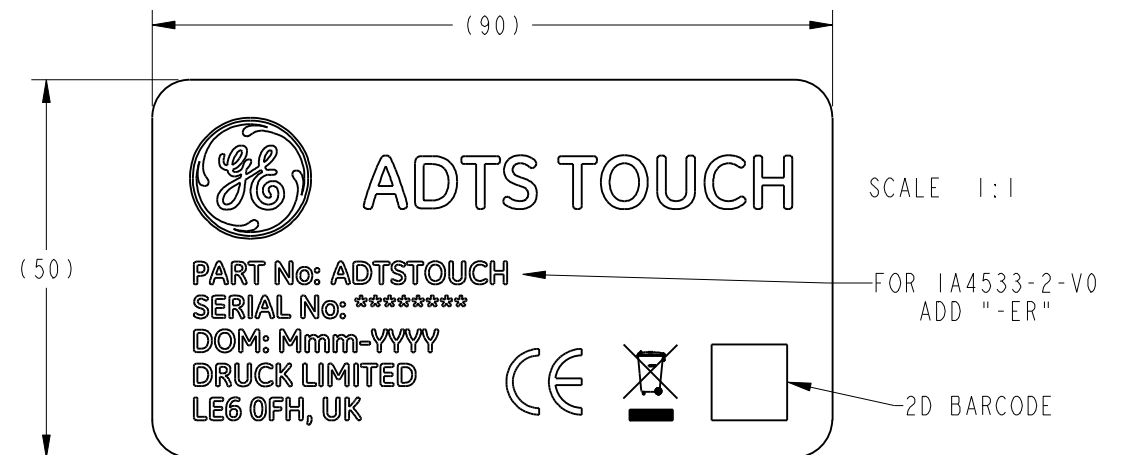


NOTES:

1. AFFIX ITEM 2 TO ITEM 1 AFTER LASER MARKING.
2. TEST SPECIFICATION: TS1049.
3. PLACE ITEM 1 (AND 2) INTO BAG (PROVIDED WITH ITEM 7) AND SECURE WITH TAPE, ITEM 10 (NOT SHOWN).
4. PLACE ITEM 12 (NOT SHOWN) AND CONFIGURED MAINS LEAD (NOT SHOWN) IN INDICATED AREA.


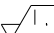
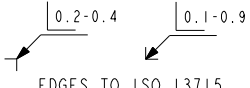
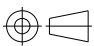


LOCATION AND ORIENTATION OF PRODUCT LABEL, ITEM 2
SCALE 1:2



PRODUCT LABEL, ITEM 2, MARKING DETAILS AS SHOWN
TEXT FONT: GE INSPIRA BOLD, TEXT HEIGHT: 3mm MINIMUM
DATE OF MANUFACTURE FORMAT AS SHOWN eg. Oct-2015

2D BARCODE TO CONTAIN PART NUMBER AND SERIAL NUMBER
TO ECC 200 IN FORMAT <PART No.><SPACE><SERIAL No.>

1A4533-2-V0		EXTENDED WIRELESS RANGE					
1A4533-1-V0		STANDARD WIRELESS RANGE					
PART NO.		DESCRIPTION, MATERIAL, REMARKS ETC.					
NON-RESTRICTED DOCUMENT FOR GENERAL CIRCULATION							
REV	A	 © 2013 DRUCK LTD FIR TREE LANE GROBY, LEICESTER LE6 0FH UK TEL: +44 (0)116 2317100	UNITS: mm UOS LINEAR TOLERANCE: ± 1.0 UOS ANGULAR TOLERANCE: $\pm 5^\circ$ UOS  1.6 MACHINED PARTS ALL OVER UOS GENERALLY IN ACCORDANCE WITH BS8888:2008 AND DC0065 DO NOT ALTER MANUALLY DO NOT SCALE	 0.2-0.4 0.1-0.9 EDGES TO ISO 13715	A3		
DATE	01-OCT-15				SCALE 1:5		
DRAWN	M.VANGO			HOLES TO BS EN ISO 286 H12			
CHECKED	W.UNDERWOOD						
MANUF	S.RUSSELL						
QUALITY	C.BREWIN			CONFIDENTIAL: THIS DOCUMENT AND ALL THE INFORMATION CONTAINED HEREIN IS THE CONFIDENTIAL AND EXCLUSIVE PROPERTY OF DRUCK LIMITED, A GE COMPANY, AND MAY NOT BE REPRODUCED, USED, DISCLOSED OR MADE PUBLIC IN ANY MANNER WITHOUT THE EXPRESS PRIOR WRITTEN AUTHORIZATION OF DRUCK LIMITED OR IT'S AFFILIATED COMPANIES ("GE"). THIS DOCUMENT IS CONVEYED PURSUANT TO RECIPIENT'S AGREEMENT TO THE FOREGOING, AND MUST BE RETURNED TO GE ON DEMAND. THE RECIPIENT AGREES THAT ARTICLES MADE IN ACCORDANCE WITH THIS DOCUMENT SHALL BE CONSIDERED GE'S DESIGN, AND THAT IDENTICAL ARTICLES OR PARTS THEREOF SHALL NOT BE MANUFACTURED FOR THE USE OR SALE BY RECIPIENT OR ANY OTHER PERSON OR ENTITY WITHOUT EXPRESS PRIOR WRITTEN AUTHORIZATION BY GE.			
PURCHASE	N/A			TITLE: ADTS TOUCH CONFIGURED HAND TERMINAL ASSEMBLY			
APPROVED	N.CAHILL						
CH. ENG	N/A	DRG. No B-A3-4533		SHT 1 OF 1			