

A

B

C

D

E

F

# BLUETOOTH XCVR

REVISIONS			
REV.	DESCRIPTION	DATE	APPROVED
A	PROTOTYPE--Initial	08/28/06	GH
B	INITIAL RELEASE	10/27/06	GH
B1	ADD FICUCIALS TO BARE BOARD	07/09/08	GH
B2	FILTER UPDATE	06/08/17	GH

### Note Table

- 1 All capacitance values are in uF unless otherwise specified.
- 2 All resistance values are in Ohms unless otherwise specified.

{Net Index Table}

SPARE COMPONENTS

Spare Gate Table		
Last Used	Not Used	Spare Gates
C12		
D2		
E9		
J1		
JP1		
L2		
MH2		
P1		
Q3		
R16		
SW1		
TP1		
U3		
X1		

ASSEMBLY/TEST PROCEDURES		PROPRIETARY INFORMATION <small>The information delineated hereon is copyrighted and proprietary to Photo Research, and may not be copied or reproduced without written permission of the President of Photo Research. This print is loaned, subject to recall on demand.</small>		<b>PHOTO RESEARCH, INC.</b> CHATSWORTH, CALIFORNIA			
				TITLE SCH,PCB,BLUETOOTH XCVR,CLASS2			
		Drawn G. HEIGEL	Date 06/08/17	SIZE <b>C</b>	FSCM NO. 92434	DWG. NO. 1804-0180-00	REV. B2
1800-0180-00 PR655		Checked S. Bryant		Approved			
NEXT ASSY	USED ON	QA		FILE	SCH BlueTooth 1804-0180 RevB2.sch	SHEET	1 of 2

{Power Table}

A

B

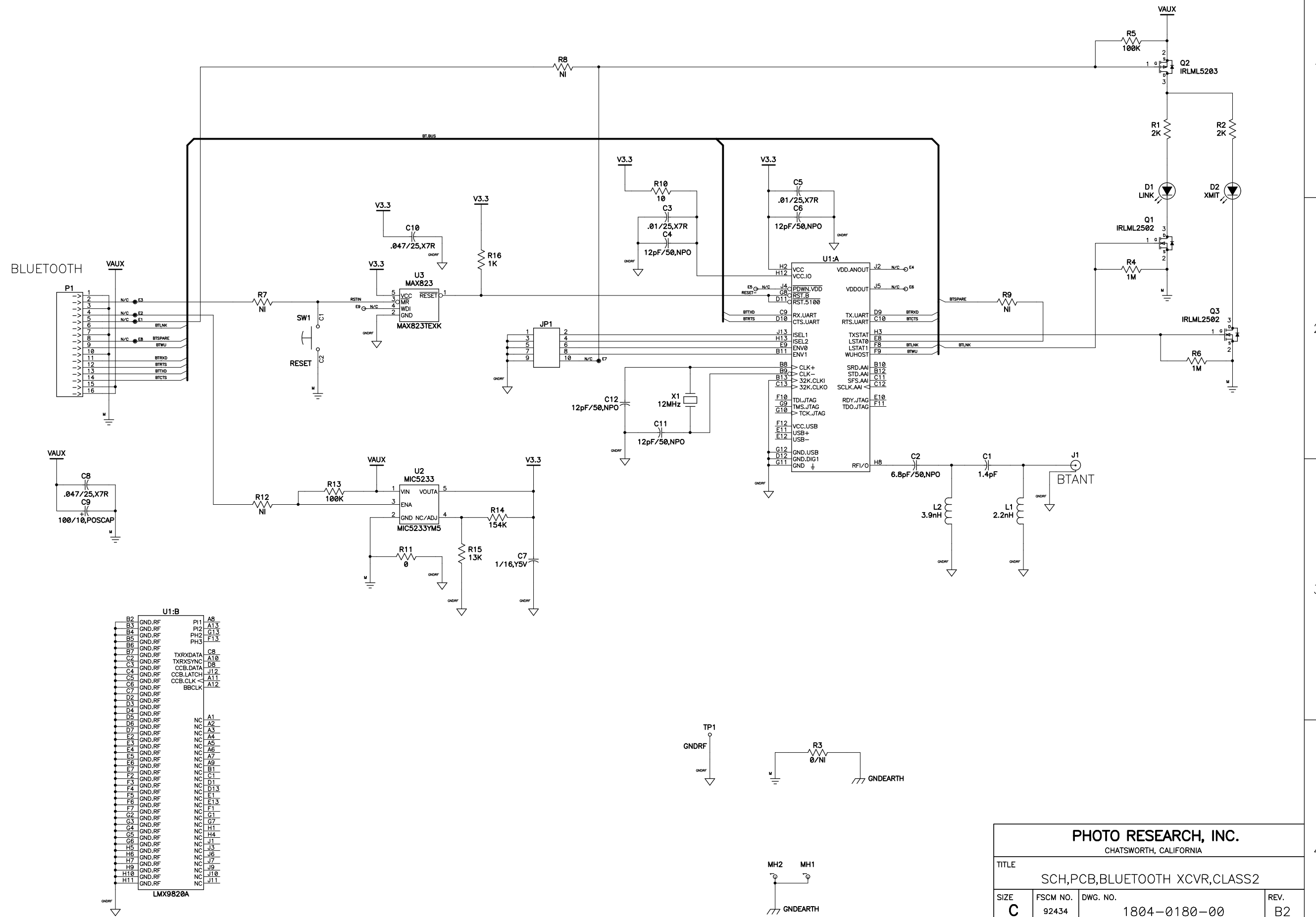
C

D

E

F

# BLUETOOTH RADIO- CLASS 2



<b>PHOTO RESEARCH, INC.</b> CHATSWORTH, CALIFORNIA			
TITLE SCH,PCB,BLUETOOTH XCVR,CLASS2			
SIZE <b>C</b>	FSCM NO. 92434	DWG. NO. 1804-0180-00	REV. B2
FILE SCH BlueTooth 1804-0180 RevB2.sch		SHEET 2 of 2	