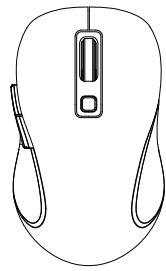


尺寸 70x90mm

# User Manual



EN DE FR IT ES

## EN User Guide

### Packing Content:

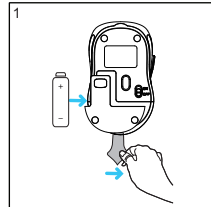
1. Mouse
2. User Manual

### System requirements:

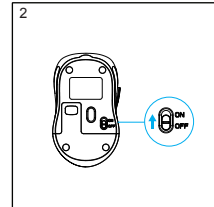
Mac OS/Windows 7/Windows 8/Windows 10/  
Vista/Linux

### Features:

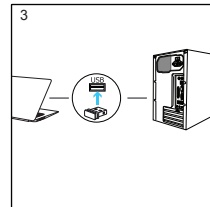
Real Rubber  
800/1200/1600 DPI



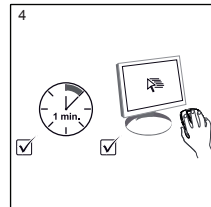
1. Put a AA battery inside



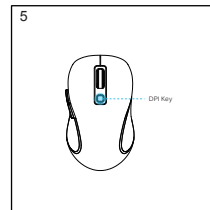
2. Turn on the switch button



3. Insert the receiver into the USB port



4. Start to use the mouse



5. Adjust the DPI by clicking the DPI key

### NOTE:

This equipment has been tested and found to comply with the limits for a Class B digital device, pursuant to part 15 of the FCC Rules. These limits are designed to provide reasonable protection against harmful interference in a residential installation. This equipment generates uses and can radiate radio frequency energy and, if not installed and used in accordance with the instructions, may cause harmful interference to radio communications. However, there is no guarantee that interference will not occur in a particular installation. If this equipment does cause harmful interference to radio or television reception, which can be determined by turning the equipment off and on, the user is encouraged to try to correct the interference by one or more of the following measures:

- Reorient or relocate the receiving antenna.
  - Increase the separation between the equipment and receiver.
  - Connect the equipment into an outlet on a circuit different from that to which the receiver is connected.
  - Consult the dealer or an experienced radio/TV technician for help
- Changes or modifications not expressly approved by the party responsible for compliance could void the user's authority to operate the equipment.
- This device complies with Part 15 of the FCC Rules. Operation is subject to the following two conditions:
- (1) this device may not cause harmful interference, and
  - (2) this device must accept any interference received, including interference that may cause undesired operation.

## DE Benutzerhandbuch

### Packungsinhalt:

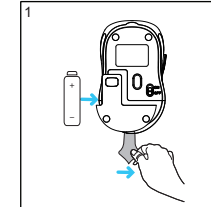
1. Maus
2. Benutzerhandbuch

### System Anforderungen:

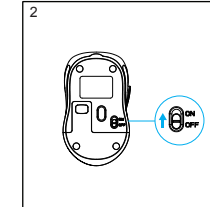
Mac OS/Windows 7/Windows 8/Windows 10/  
Vista/Linux

### Eigenschaften:

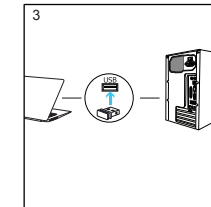
Echter Gummi  
800/1200/1600 DPI



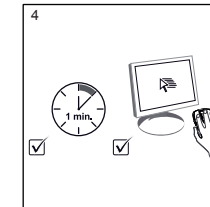
1. Legen Sie eine AA-Batterie ein



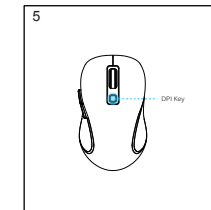
2. Schalter einschalten



3. Setzen Sie den Empfänger in den USB-Anschluss ein



4. Starten Sie, um die Maus zu verwenden



5. Stellen Sie die DPI ein, indem Sie auf die DPI-Taste klicken

## FR Guide de l'Utilisateur

### Contenu d'Emballage:

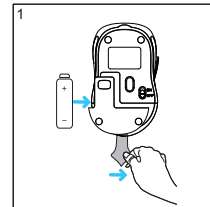
1. Souris
2. Manuel de l'Utilisateur

### Exigences Système:

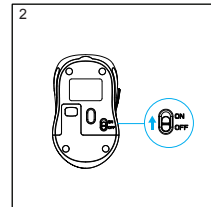
Mac OS/Windows 7/Windows 8/Windows 10/  
Vista/Linux

### Caractéristiques:

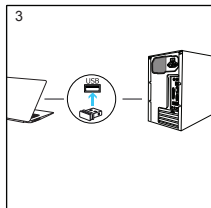
Caoutchouc Véritable  
800/1200/1600 DPI



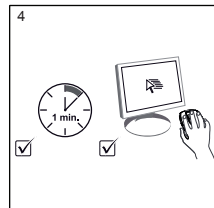
1. Mettez une pile AA à l'intérieur



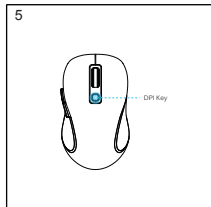
2. Allumez le bouton



3. Insérez le récepteur dans le port USB



4. Commencez à utiliser la souris



5. Ajustez le DPI en cliquant sur la touche DPI

## IT Guida Utente

### Contenuto dell'Imballaggio:

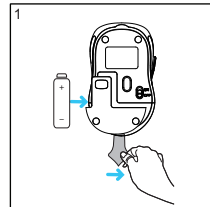
1. Mouse
2. Manuale Utente

### Requisiti di Sistema:

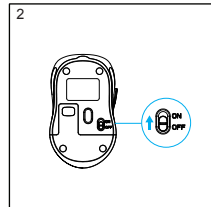
Mac OS/Windows 7/Windows 8/Windows 10/  
Vista/Linux

### Caratteristiche:

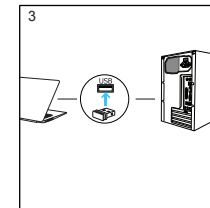
Vera Gomma  
800/1200/1600 DPI



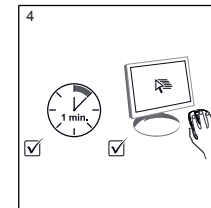
1. Inserire una batteria AA all'interno



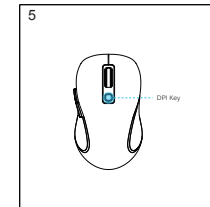
2. Accendere il pulsante interruttore



3. Inserire il ricevitore nella porta USB



4. Avviare per usare il mouse



5. Regolare il DPI facendo clic sul tasto DPI

## ES Guía del Usuario

### Contenido del Embalaje:

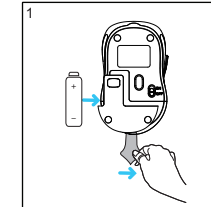
1. Ratón
2. Manual de Usuario

### Requisitos del Sistema:

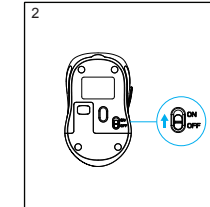
Mac OS/Windows 7/Windows 8/Windows 10/  
Vista/Linux

### Características:

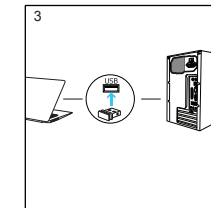
Caucho Real  
800/1200/1600 DPI



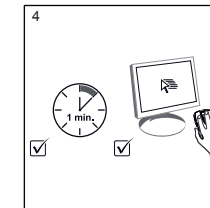
1. Coloca una batería AA en el interior



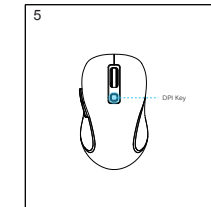
2. Enciende el botón de interruptor



3. Inserte el receptor en el puerto USB



4. Empieza a usar el ratón



5. Ajuste el DPI haciendo clic en la tecla DPI