

User Manual



Model:G1307E

EN DE FR IT ES

EN User Guide

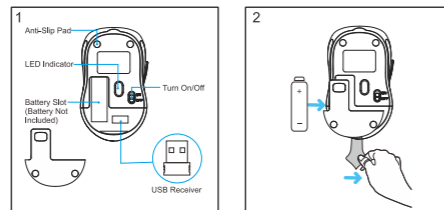
Packing Content:



System requirements:

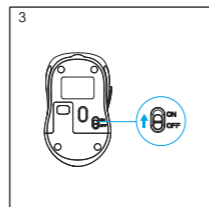
Mac OS/Windows 7/Windows 8/Windows 10/
Vista/Linux

Features:

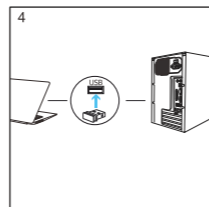
Real Rubber
800/1200/1600 DPI

1. The USB receiver is inside the mouse

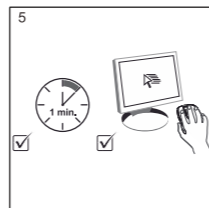
2. Put a AA battery inside



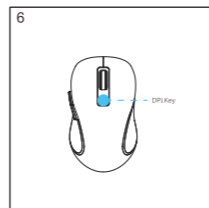
3. Turn on the switch button



4. Insert the receiver into the USB port



5. Start to use the mouse



6. Adjust the DPI by clicking the DPI key

NOTE:

This equipment has been tested and found to comply with the limits for a Class B digital device, pursuant to part 15 of the FCC Rules. These limits are designed to provide reasonable protection against harmful interference in a residential installation. This equipment generates uses and can radiate radio frequency energy and, if not installed and used in accordance with the instructions, may cause harmful interference to radio communications. However, there is no guarantee that interference will not occur in a particular installation. If this equipment does cause harmful interference to radio or television reception, which can be determined by turning the equipment off and on, the user is encouraged to try to correct the interference by one or more of the following measures:

- Reorient or relocate the receiving antenna.
- Increase the separation between the equipment and receiver.
- Connect the equipment into an outlet on a circuit different from that to which the receiver is connected.
- Consult the dealer or an experienced radio/TV technician for help

Changes or modifications not expressly approved by the party responsible for compliance could void the user's authority to operate the equipment. This device complies with Part 15 of the FCC Rules. Operation is subject to the following two conditions: (1) this device may not cause harmful interference, and (2) this device must accept any interference received, including interference that may cause undesired operation.

DE Benutzerhandbuch

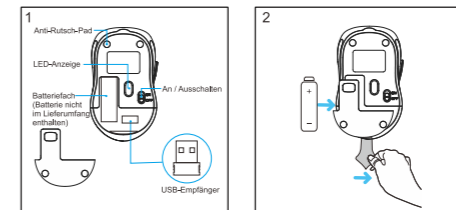
Packungsinhalt:



System Anforderungen:

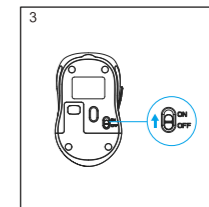
Mac OS/Windows 7/Windows 8/Windows 10/
Vista/Linux

Eigenschaften:

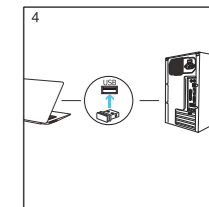
Echter Gummi
800/1200/1600 DPI

1. Der USB-Empfänger befindet sich in der Maus

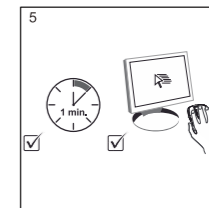
2. Legen Sie eine AA-Batterie ein



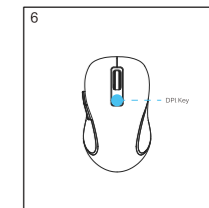
3. Schalter einschalten



4. Setzen Sie den Empfänger in den USB-Anschluss ein



5. Starten Sie, um die Maus zu verwenden



6. Stellen Sie die DPI ein, indem Sie auf die DPI-Taste klicken

FR Guide de l'Utilisateur

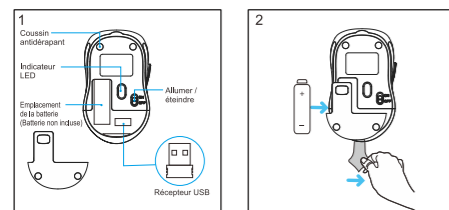
Contenu d'Emballage:



Exigences Système:

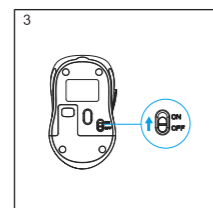
Mac OS/Windows 7/Windows 8/Windows 10/
Vista/Linux

Caractéristiques:

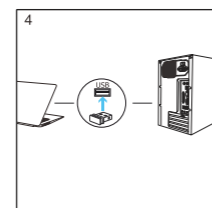
Caoutchouc Véritable
800/1200/1600 DPI

1. Le récepteur USB est à l'intérieur de la souris

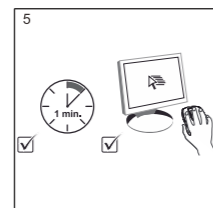
2. Mettez une pile AA à l'intérieur



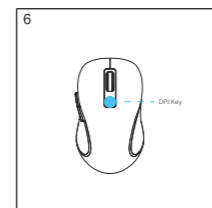
3. Allumez le bouton



4. Insérez le récepteur dans le port USB



5. Commencez à utiliser la souris



6. Ajustez le DPI en cliquant sur la touche DPI

IT Guida Utente

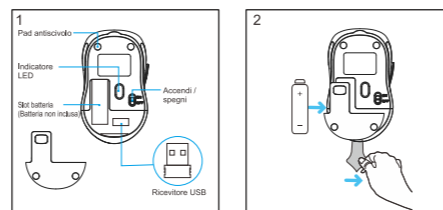
Contenuto dell'Imballaggio:



Requisiti di Sistema:

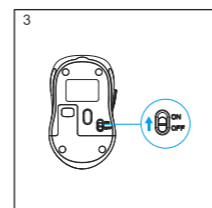
Mac OS/Windows 7/Windows 8/Windows 10/
Vista/Linux

Caratteristiche:

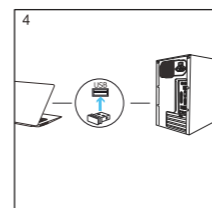
Vera Gomma
800/1200/1600 DPI

1. Il ricevitore USB si trova all'interno del mouse

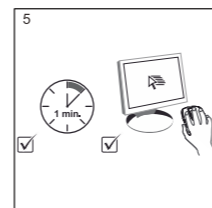
2. Inserire una batteria AA all'interno



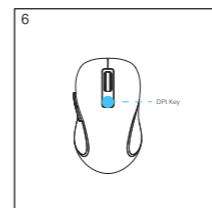
3. Accendere il pulsante interruttore



4. Inserire il ricevitore nella porta USB



5. Avviare per usare il mouse



6. Regolare il DPI facendo clic sul tasto DPI

ES Guía del Usuario

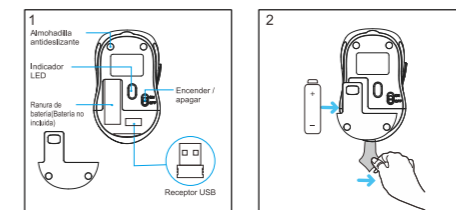
Contenido del Embalaje:



Requisitos del Sistema:

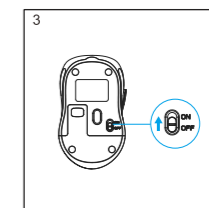
Mac OS/Windows 7/Windows 8/Windows 10/
Vista/Linux

Características:

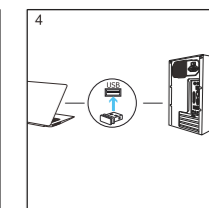
Caucho Real
800/1200/1600 DPI

1. El receptor USB está dentro del mouse

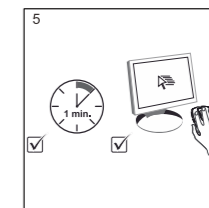
2. Coloca una batería AA en el interior



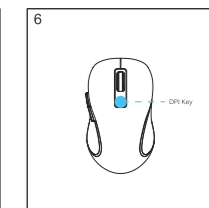
3. Encienda el botón de interruptor



4. Inserte el receptor en el puerto USB



5. Empieza a usar el ratón



6. Ajuste el DPI haciendo clic en la tecla DPI