

Wireless Mouse

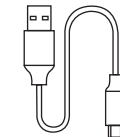
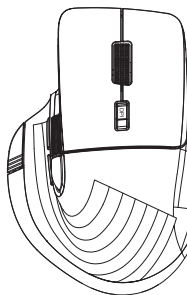
Smart Fly Scrolling Working on glass

FCC ID:2AAVD-D1051C9

1.Please check if the accessories are completed in the package

A: Mouse

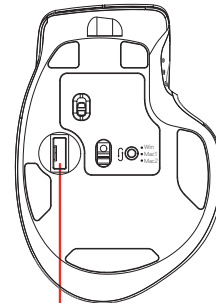
B: Charging Cable



2.Charging precautions

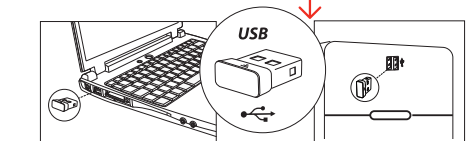
Warning:Charging limited to 5.0V voltage,don't use fast charger otherwise it may harm the mouse.We advise to use the charging cable we provided and charge the mouse through your computer port.

3.Wireless USB receiver storage location and use

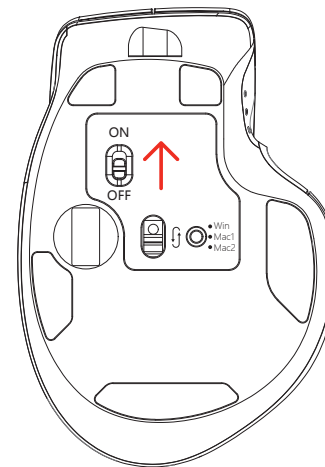


A: Take out the wireless USB receiver

B: Plug it into the device port and use it



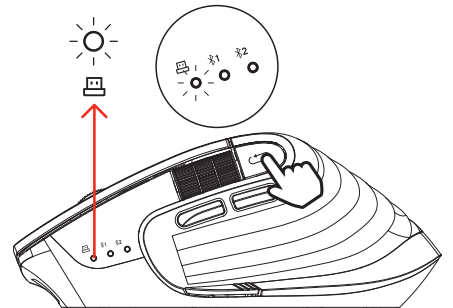
4.Power switch



5.Switching wireless signal

A: (White light) : Wireless USB receiver signal
B: (Blue light) : Bluetooth 1
C: (Green light) : Bluetooth 2

After switching to the corresponding connection type, insert the USB receiver into the corresponding device or find the Bluetooth signal on the corresponding device and connect it.

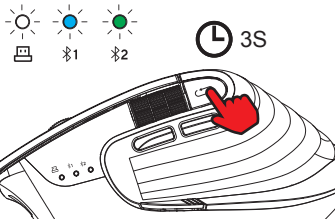


* Defaulted setting at 2.4G mode

6.Change stored wireless information

Each Bluetooth can only record the information of one device, when using the same Bluetooth to connect to another new device, please clear the memory information of the Bluetooth Settings, then the Bluetooth can be found by the new device.

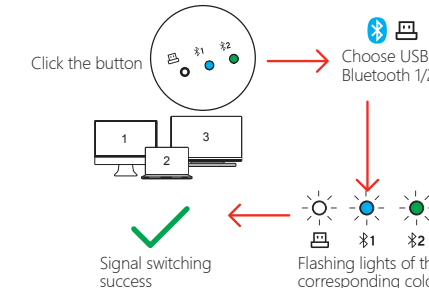
Clear method: as shown in the figure, click and switch to blue/green light, then hold down the button again for 3 seconds, the light will go into a rapid flashing state, at this time, the old device information has been cleared, can be found by the new device.



*You need to press this button with much force.We design this considering any touch by mistake.

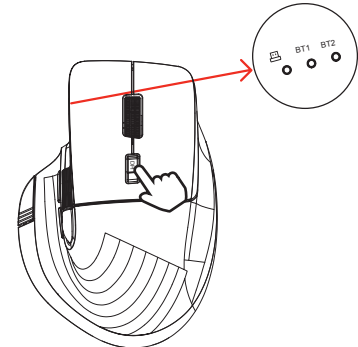
7.Fast switching between multiple devices

For connected devices, Bluetooth will remember the information of the device, at this time, If the device's wireless signal is on, only need to click the device switch key, Bluetooth will automatically connect to the corresponding device, so that users can fast switch between multiple devices.



8.DPI Adjustment

Click the DPI button to adjust the different DPI speed, It can be judged by the number of times the light flicker.



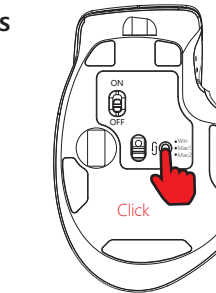
1000 DPI

1600 DPI

2400 DPI

3200 DPI

9.About using on Mac OS



Windows OS



Short Click, light flashes twice

Mac1 OS



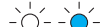
Short Click, light flashes 3 times

Mac2 OS



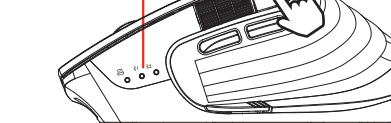
Short Click, light flashes 4 times

Windows OS



Long-press for 5S all lights on for 2S
Restore factory setting
Three channels for Windows OS

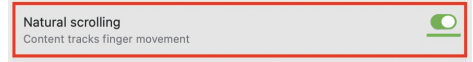
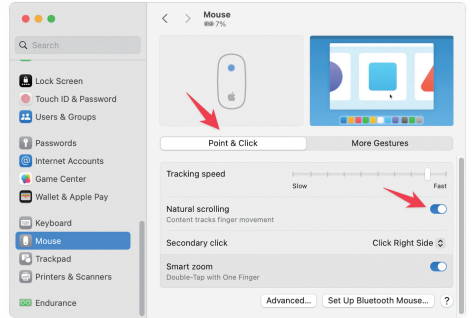
Indicator Light



When you connect this mouse with your Mac,the function of Back and Forward buttons may be unavailable if you do not switch the system button at the bottom of mouse.
Please switch to corresponding system(Mac1 and Mac2)based on the system language you are using listed as below.

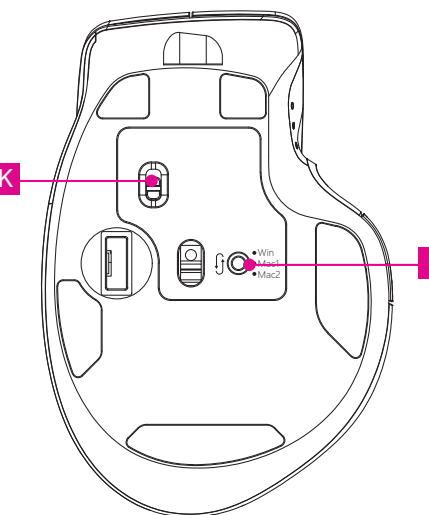
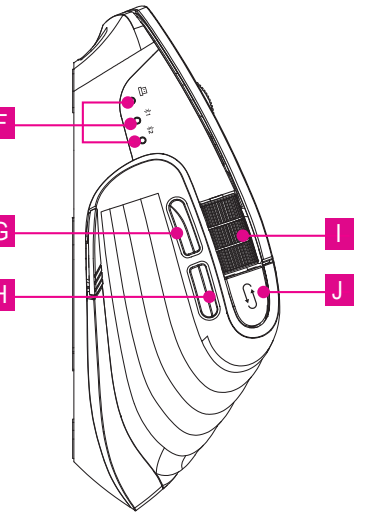
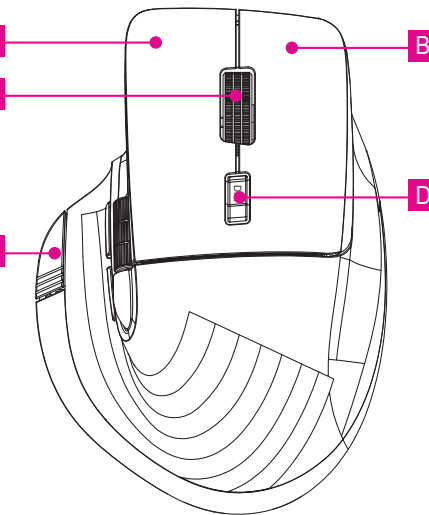
Mac1 Support Language	Mac2 Support Language
Chinese	German
English	Spanish
Russian	Italian
Arabic	Portuguese
Japanese	Norwegian
Korean	Icelandic
French	Swedish
Greek	Danish
Czech	Finnish
Belgian	
Canadian	
Irish	
Brazilian	
Farsi	
Faroese	
Romanian	
Dutch	

10.About mouse wheel direction on Mac OS



Mouse Wheel Direction Adjustment on Mac OS
1.Open the computer Settings, go to the Mouse Settings page, open "Natural scrolling".
2.Click the System switch button (red button) at the bottom of the mouse to switch to Mac.

Functions:



- A Left Button
- B Right Button
- C Smart Flying Scroll Wheel
- D DPI Button
- E Return to Desktop
- F Devices Indicators:
 - 2.4G White Indicator
 - Bluetooth 1 Blue Indicator
 - Bluetooth 2 Green Indicator
- G Forward Button
- H Back Button
- I Side Wheel
- J Devices Switch Button
- K ON/OFF Button
- L Windows/Mac OS Switch Button

- A Left Button
 - B Right Button
 - C Smart Flying Scroll Wheel *
 - D DPI Button
 - E Full Screen(Control+Command+F)
 - F Devices Indicators:
 - 2.4G White Indicator
 - Bluetooth 1 Blue Indicator
 - Bluetooth 2 Green Indicator
 - G Forward Button(Command+J)
 - H Back Button(Command+I)
 - I Side Wheel *
 - J Devices Switch Button
 - K ON/OFF Button
 - L Windows/Mac OS Switch Button
- * Refer to item 10(Mac defaulted setting)

- A Left Button
 - B Right Button
 - C Smart Flying Scroll Wheel *
 - D DPI Button
 - E Full Screen(Control+Command+F)
 - F Devices Indicators:
 - 2.4G White Indicator
 - Bluetooth 1 Blue Indicator
 - Bluetooth 2 Green Indicator
 - G Forward Button(Command+' ')
 - H Back Button(Command+;))
 - I Side Wheel *
 - J Devices Switch Button
 - K ON/OFF Button
 - L Windows/Mac OS Switch Button
- * Refer to item 10(Mac defaulted setting)

FCC Warning

This device complies with Part 15 of the FCC Rules. Operation is subject to the following two conditions:

(1) This device may not cause harmful interference, and (2) this device must accept any interference received, including interference that may cause undesired operation.

NOTE 1: This equipment has been tested and found to comply with the limits for a Class B digital device, pursuant to part 15 of the FCC Rules. These limits are designed to provide reasonable protection against harmful interference in a residential installation. This equipment generates, uses and can radiate radio frequency energy and, if not installed and used in accordance with the instructions, may cause harmful interference to radio communications. However, there is no guarantee that interference will not occur in a particular installation. If this equipment does cause harmful interference to radio or television reception, which can be determined by turning the equipment off and on, the user is encouraged to try to correct the interference by one or more of the following measures:

- Reorient or relocate the receiving antenna.
- Increase the separation between the equipment and receiver.
- Connect the equipment into an outlet on a circuit different from that to which the receiver is connected.
- Consult the dealer or an experienced radio/TV technician for help.

NOTE 2: Any changes or modifications to this unit not expressly approved by the party responsible for compliance could void the user's authority to operate the equipment.

The device has been evaluated to meet general RF exposure requirement. The device can be used in portable exposure condition without restriction.