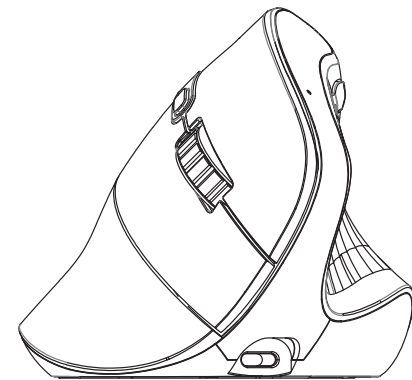


展开尺寸：520*200mm
成品尺寸：65*100mm
105G铜版纸，四色双面印刷，风琴七折后对折

Multi Device Vertical Mouse

FCC ID:2AAVD-D1031C8

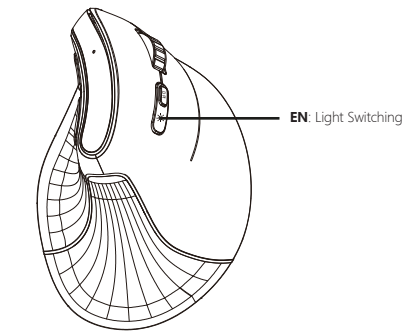


User Manual



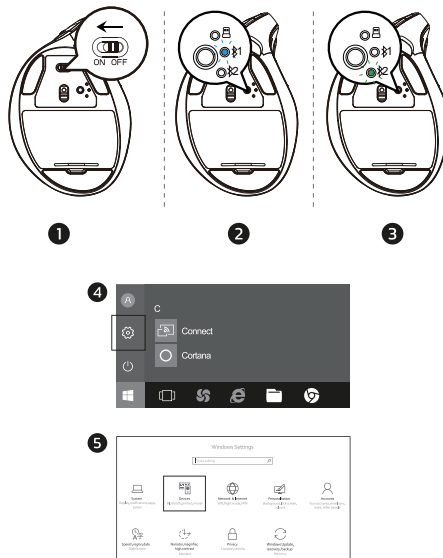
Charging precautions
Warning:Charging limited to 5.0V voltage,dont use fast charger otherwise it may harm the mouse.We advise to use the charging cable we provided and charge the mouse through your computer port.

RGB Light Mode Switch



EN:
Click the light switching button to switch the light mode as below
1.Mixed Color Running Horse
2.Colorful Breathing
3.Colorful Long Light
4.Colorful Whips
5.Colorful Snake Eating
6.Night Light 1
7.Night Light 2
8.Light off

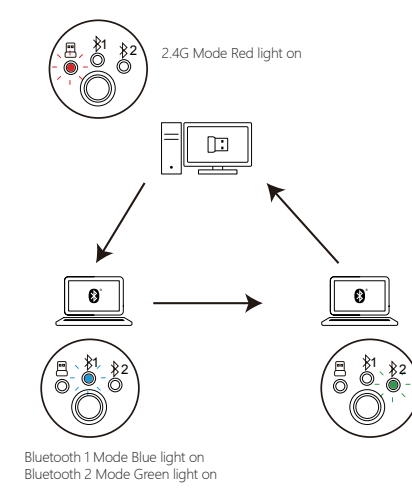
Bluetooth Connection



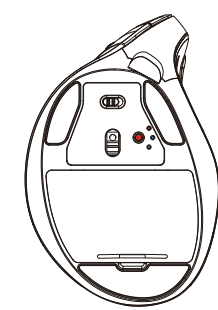
Mac OS



EN:
Please operate the Bluetooth installation steps(1~ 3) before pairing.
1.Click the "system preferences" button on the Mac.
2.Click the Bluetooth button on the system preference folder.
3.Search the Bluetooth "BTS5.2 Mouse", and click the Pairing button.
If installed completely, the mouse could be used normally.

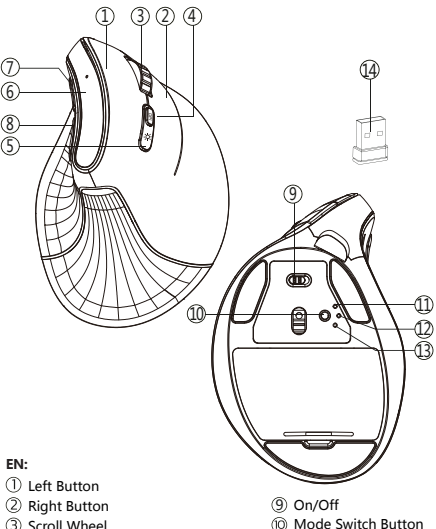


Package Include
1x Wireless Mouse
1x User Manual
1x Charging Cable



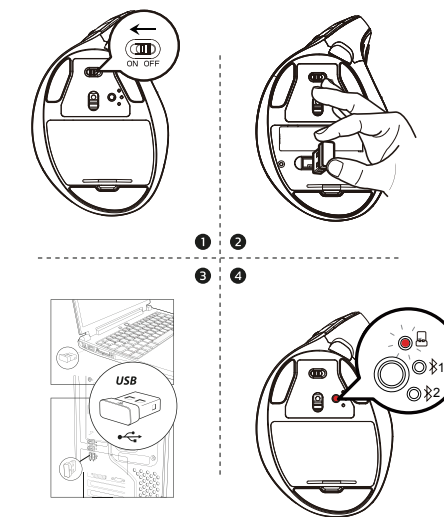
Change Stored Wireless Information
Each Bluetooth can only record the information of one device, when using the same Bluetooth to connect to another new device, please clear the memory information of the Bluetooth Settings, then the Bluetooth can be found by the new device.
Clear method: as shown in the figure, click and switch to blue/green light, then hold down the button again for 3 seconds,the light will go into a rapid flashing state, at this time, the old device information has been cleared, can be found by the new device.

Function

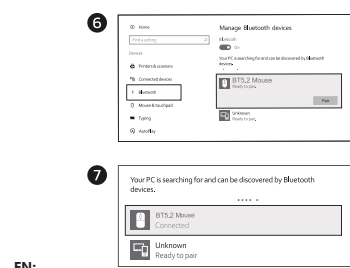


EN:
① Left Button
② Right Button
③ Scroll Wheel
④ DPI Button
⑤ Light Switching
⑥ DPI/Low power/Channel Indicator
⑦ Forward Button
⑧ Back Button
⑨ On/Off
⑩ Mode Switch Button
⑪ 2.4G Indicator
⑫ Bluetooth Indicator 1
⑬ Bluetooth Indicator 2
⑭ USB Receiver
Note:Bluetooth indicator/USB indicator flashes quickly on low battery

2.4G Connection

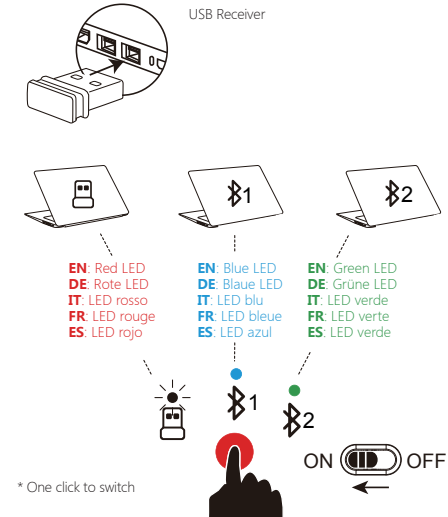


EN:
1.Turn on the mouse.
2.Take out the USB receiver.
3.Insert the USB receiver into the computer USB port.
4.Click the mode switch button to 2.4G mode then the first red LED will flash slowly.
* Defaulted setting at 2.4G mode



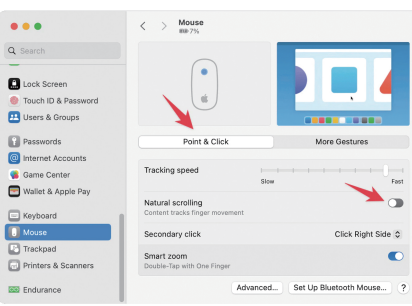
EN:
Windows System(Take Windows 10 as an example)
1.Turn on the mouse.
2.Press the switch button to switch to the second channel, then the blue LED will flash slowly.
3.Long press the switch button for 3~5 seconds until the blue LED flashes quickly.The mouse will be in Bluetooth pairing mode.
4.Click the "Bluetooth devices" button on the computer.
5.Click the "Add or remove Bluetooth devices" button.
6.Search the Bluetooth 'BTS5.2 Mouse', and click the Pairing button.
7.When the Bluetooth 'BTS5.2 Mouse' is connected, the mouse is ready to use.

Quickly switch between multiple devices



EN: Red LED
DE: Rote LED
IT: LED rosso
FR: LED rouge
ES: LED rojo
EN: Blue LED
DE: Blaue LED
IT: LED blu
FR: LED bleue
ES: LED azul
EN: Green LED
DE: Grüne LED
IT: LED verde
FR: LED verte
ES: LED verde
* One click to switch
When 2.4G or Bluetooth connect successfully, shortly press the switch button at the bottom of the mouse, and you could switch the modes easily.

About mouse wheel direction on Mac OS



Mouse Wheel Direction Adjustment on Mac OS
1.Open the computer Settings, go to the Mouse Settings page, Disable the "Natural scrolling" function.
2.Note: On Mac systems, the forward/back buttons are not functional.

EN: Basic Parameters

| | |
|--|---|
| Chipset | EP2T45F10 |
| Engine | Optics |
| Mouse Resolution | 1000-1600-2400-4000 dpi |
| Mouse Button Life | Over 3 million |
| Mouse Size | 77.7*124.8*83.2mm |
| Battery Capacity | 500mAh |
| Charging Time | Two hours |
| 2.4G Transmission Parameters | |
| Transmission distance | 10m |
| Work voltage | 3.7V |
| Work currency | RGB light on: 50 mA,RGB light off: 15 mA |
| Rate of return | 125Hz |
| Bluetooth Transmission Parameters | |
| Transmission distance | 10m |
| Work voltage | 3.7V |
| Work currency | RGB light on: 50 mA,RGB light off: 15 mA |
| Rate of return | 133Hz |
| System needs | Bluetooth receiver device(Windows10® or higher versions, Mac OS X 10.10 or higher versions, Android 4.3 or higher versions) |
| USB interface | Window® 8,Windows® 10 or higher versions Mac OS X 10.10 or higher versions Android 4.3 or higher versions |

FCC Warning

This device complies with Part 15 of the FCC Rules. Operation is subject to the following two conditions:

(1) This device may not cause harmful interference, and (2) this device must accept any interference received, including interference that may cause undesired operation.

NOTE 1: This equipment has been tested and found to comply with the limits for a Class B digital device, pursuant to part 15 of the FCC Rules. These limits are designed to provide reasonable protection against harmful interference in a residential installation. This equipment generates, uses and can radiate radio frequency energy and, if not installed and used in accordance with the instructions, may cause harmful interference to radio communications. However, there is no guarantee that interference will not occur in a particular installation. If this equipment does cause harmful interference to radio or television reception, which can be determined by turning the equipment off and on, the user is encouraged to try to correct the interference by one or more of the following measures:

- Reorient or relocate the receiving antenna.
- Increase the separation between the equipment and receiver.
- Connect the equipment into an outlet on a circuit different from that to which the receiver is connected.
- Consult the dealer or an experienced radio/TV technician for help.

NOTE 2: Any changes or modifications to this unit not expressly approved by the party responsible for compliance could void the user's authority to operate the equipment.

The device has been evaluated to meet general RF exposure requirement. The device can be used in portable exposure condition without restriction.