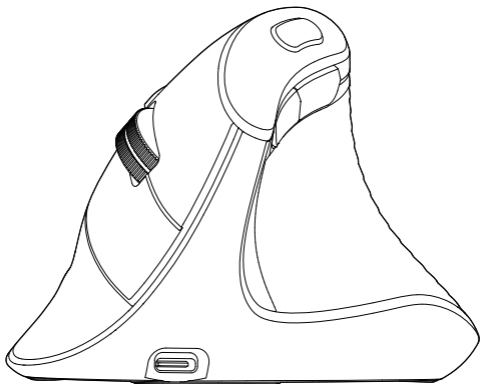


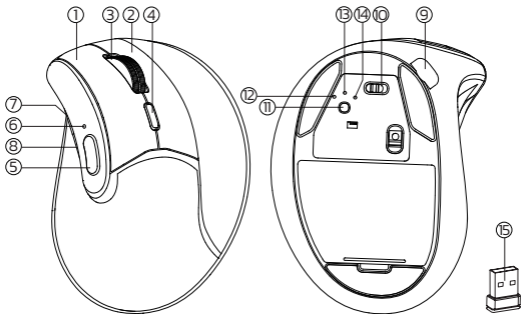
D1027C8

WIRELESS VERTICAL MOUSE



User Manual

Product Function

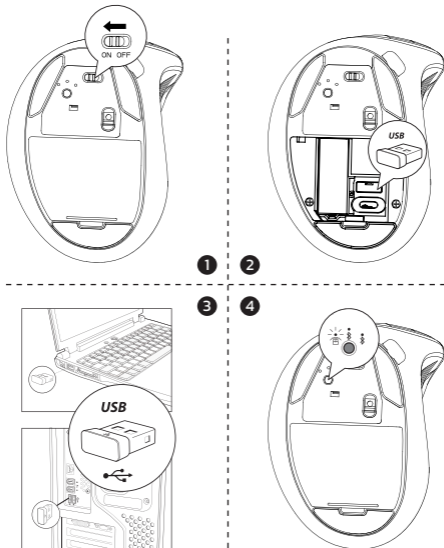


US/UK/CA

- ① Left Button
- ② Right Button
- ③ Scroll Wheel
- ④ DPI Button
- ⑤ Desktop Button
- ⑥ DPI/Channel Indicator
- ⑦ Forward Button
- ⑧ Back Button
- ⑨ Charging Port
- ⑩ On/Off
- ⑪ Mode Switch Button
- ⑫ 2.4G Indicator
- ⑬ Equipment 1 Indicator
- ⑭ Equipment 2 Indicator
- ⑮ USB Receiver

Note: Bluetooth indicator/USB indicator flashes quickly on low battery.

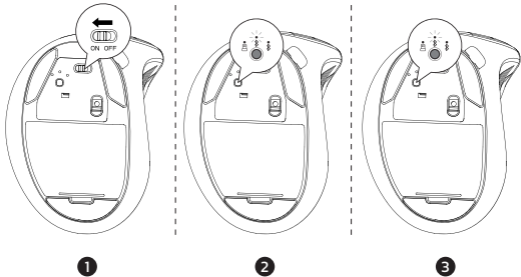
2.4G Connection



- 1 Turn on the mouse.
- 2 Take out the USB receiver.
- 3 Insert the USB receiver into the computer USB port.
- 4 Click the mode switch button to 2.4G mode then the first red LED will flash slowly.

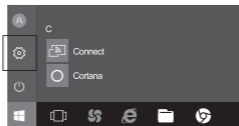
Bluetooth Connection

Windows System(Take Windows 10 as an example)



- 1 Turn on the mouse.
- 2 Press the switch button to switch to the second channel, then the blue LED will flash slowly.
- 3 Long press the switch button for 3~5 seconds until the blue LED flashes quickly. The mouse will be in Bluetooth pairing mode.

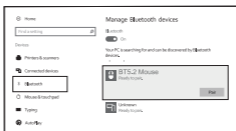
- 4 Click the “Bluetooth devices” button on the computer.



- 5 Click the “Add or remove Bluetooth devices” button.



- 6 Search the Bluetooth “BT5.2 Mouse”, and click the Pairing button.



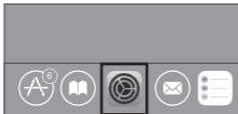
- 7 When the Bluetooth “BT5.2 Mouse” is connected, the mouse is ready to use.



Mac OS System

Please operate the Bluetooth installation steps(1~3) before pairing.

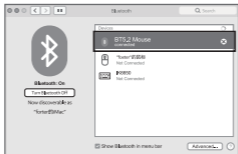
- 1 Click the "system preferences" button on the Mac.



- 2 Click the Bluetooth button on the system preference folder.

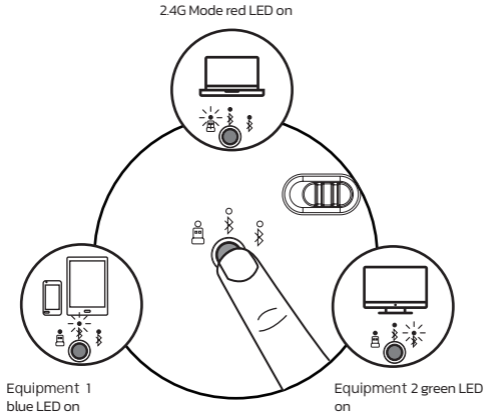


- 3 Search the Bluetooth "BT5.2 Mouse", and click the Pairing button. If installed completely, the mouse could be used normally.



Mode Switch

When 2.4G or Bluetooth connect successfully, shortly press the switch button at the bottom of the mouse, and you could switch the modes easily.



How Do You Wake up the Nulea Vertical Mouse?

The Nulea Vertical Mouse employs an intelligent sleep mode to safeguard the battery for extended use:

1. In USB receiver and Bluetooth connection mode, Nulea Vertical mouse goes into hibernation after 10 minutes of your last mouse use; If you need to use the mouse, you must push the button to wake it up (moving the mouse will not wake it up);
2. The Nulea Vertical mouse goes into deep Bluetooth sleep 109 minutes after you last used it in Bluetooth connection mode; at this point, you must press the button to wake it up while also allowing the mouse to find Bluetooth in order to reestablish the connection (it takes 3 to 5 seconds to check whether the Bluetooth of the terminal device is on).

Package Include

- 1x Wireless Mouse
- 1x USB-C Cable
- 1x User Manual

Basic Parameters

Chipset	Yichip 1066
Engine	Optics
Mouse Resolution	1000/1600/2400 dpi
Mouse Button Life	Over 3 million
Mouse Size	112.08*79.92*77.86mm
Mouse Weight	121g
2.4G Transmission Parameters	
Transmission distance	10m
Work voltage	3.7V
Work current	8.0±0.5mA
Rate of return	125Hz
Bluetooth Transmission Parameters	
Transmission distance	10m
Work voltage	3.7V
Work current	6.0±0.5mA
Rate of return	125Hz
System needs	Bluetooth receiver device
USB interface	Window® 8, Windows® 10 or higher versions Mac OS X 10.10 or higher versions Android 4.3 or higher versions

FCC ID

Any Changes or modifications not expressly approved by the party responsible for compliance could void the user's authority to operate the equipment.

This device complies with part 15 of the FCC Rules. Operation is subject to the following two conditions: (1) This device may not cause harmful interference, and (2) this device must accept any interference received, including interference that may cause undesired operation.

FCC Radiation Exposure Statement

This equipment complies with FCC radiation exposure limits set forth for an uncontrolled environment.

Correct Disposal of This Product



(Waste Electrical & Electronic Equipment)

This Marking shown on the product or its literature, indicate that it should not be disposed with other household wastes at the end of its working life.

To prevent possible harm to the environment or human health from uncontrolled waste disposal, please separate this from other types of wastes and recycle it responsibly to promote the sustainable reuse of material resources. Household user should contact either the retailer where they purchased this product or their local government office, for details of where and how they can take this item for environmentally safe recycling.

Business users should contact their supplier and check the terms and conditions of the purchase contract. This product should not be mixed with other commercial wastes for disposal.

FCC Warning

This device complies with Part 15 of the FCC Rules. Operation is subject to the following two conditions:

(1) This device may not cause harmful interference, and (2) this device must accept any interference received, including interference that may cause undesired operation.

NOTE 1: This equipment has been tested and found to comply with the limits for a Class B digital device, pursuant to part 15 of the FCC Rules. These limits are designed to provide reasonable protection against harmful interference in a residential installation. This equipment generates, uses and can radiate radio frequency energy and, if not installed and used in accordance with the instructions, may cause harmful interference to radio communications. However, there is no guarantee that interference will not occur in a particular installation. If this equipment does cause harmful interference to radio or television reception, which can be determined by turning the equipment off and on, the user is encouraged to try to correct the interference by one or more of the following measures:

- Reorient or relocate the receiving antenna.
- Increase the separation between the equipment and receiver.
- Connect the equipment into an outlet on a circuit different from that to which the receiver is connected.
- Consult the dealer or an experienced radio/TV technician for help.

NOTE 2: Any changes or modifications to this unit not expressly approved by the party responsible for compliance could void the user's authority to operate the equipment.

The device has been evaluated to meet general RF exposure requirement. The device can be used in portable exposure condition without restriction.

" This device complies with Industry Canada ' s license-exempt RSSs. Operation is subject to the following two conditions:

- (1) This device may not cause interference; and
- (2) This device must accept any interference, including interference that may cause undesired operation of the device. "

« Le présent appareil est conforme aux CNR d'Industrie Canada applicables aux appareils radio exempts de licence.

L'exploitation est autorisée aux deux conditions suivantes : (1) l'appareil ne doit pas produire de brouillage, et

(2) l'utilisateur de l'appareil doit accepter tout brouillage radioélectrique subi, même si le brouillage est susceptible d'en compromettre le fonctionnement. »



MADE IN CHINA

FCC ID:2AAVD-D1027C8

EU	REP
-----------	------------

C&E Connection E-Commerce(DE) GmbH
Zum Linnegraben 20, 65933,
Frankfurt am Main, Germany
Email: info@ce-connection.de
Phone: +49(069) 27246648

UK	REP
-----------	------------

CET PRODUCT SERVICE LTD.
Chase Business Centre, 39-41 Chase Side,
London N14 5BP United Kingdom
Email: info.cetservice@gmail.com
Phone: +447419325266