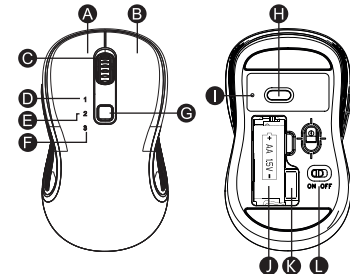


User Manual

2.4G+Bluetooth+ Bluetooth Wireless Mouse

EN

Product Function

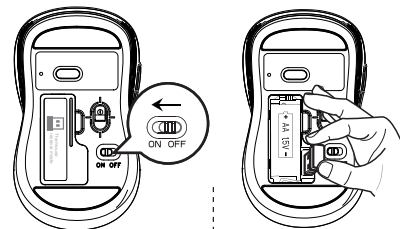


- A Left Button
- B Right Button
- C Scroll Wheel
- D USB Indicator
- E Bluetooth 1 Indicator
- F Bluetooth 2 Indicator
- G Mode Switch Button
- H DPI Button
- I DPI Indicator
- J Battery Bay
- K USB Receiver
- L On/Off
- M Forward Button
- N Back Button

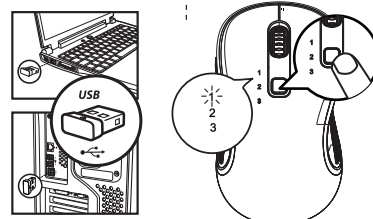
Note:Bluetooth indicator/USB indicator flashes quickly on low battery.

1

2.4G Connection



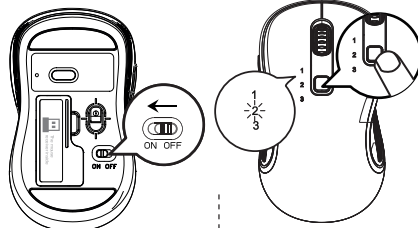
1. Turn on the mouse.
2. Remove the USB receiver.
3. Insert the USB receiver into computer USB port.
4. Press the mode switch to 2.4G mode until white LED is on.



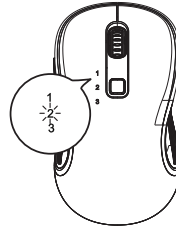
2

Bluetooth Connection

Windows System
(Take Windows 10 as an example)

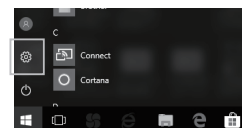


1. Turn on the mouse
2. Press the toggle button until the white light flashes slowly.
3. Press the toggle button for 3~5 seconds until the white light flashes quickly. The mouse will be at Bluetooth pairing mode this moment.



3

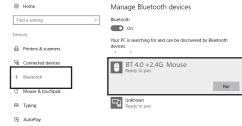
4. Click the "Bluetooth devices" button in the computer.



5. Click the "Add or remove Bluetooth devices" button.



6. Search the Bluetooth "BT 4.0+2.4G Mouse", and click Pairing button.



7. While the Bluetooth "BT 4.0+2.4G Mouse" is connected, the mouse can be used normally.



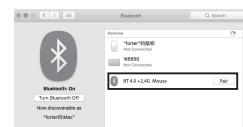
4

Mac OS System
Please operate the Bluetooth installation steps(1~3) before pairing.

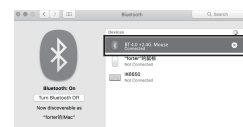
4. Click the "system preferences" button on the Mac.



5. Click the Bluetooth button on the system preference folder.



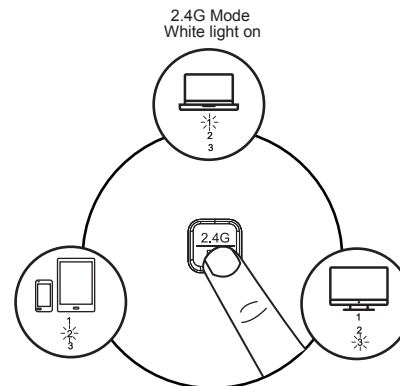
6. Search the Bluetooth "BT 4.0+2.4G Mouse", and click Pairing button. If installed completely, the mouse can be used normally.



5

Ways of Mode Switching

When Bluetooth and 2.4G connected successfully, shortly press the multi-mode toggle button, and you can switch the modes easily.



Bluetooth 1 Mode White light on

Shortly press the multi-mode toggle button at the top of mouse.

6

Basic Parameters

Chip: Nordic NRF51822
Engine: Optics
Mouse Resolution: 1000/1600/2400 dpi
Mouse Button Life: Over 3 million
Mouse Size: 109*62*37mm
Mouse Weight: 76g

2.4G Transmission Parameters:
Transmission distance: 10m
Work voltage: 1.5V
Work Current: 10.0±0.5mA
Rate of Return: 250Hz

Bluetooth Transmission Parameters:
Transmission distance: 10m
Work voltage: 1.5V
Work Current: 6.0±0.5mA
Rate of Return: 125Hz

System needs:
Bluetooth receiver device
USB interface
Windows 8, Windows 10 or higher versions
Mac OS X 10.10 or higher version
Android 4.3 or higher versions

Package Include

- ▶ 1x Wireless Mouse
- ▶ 1x USB Receiver
- ▶ 1x Manual

7

NOTE:
This equipment has been tested and found to comply with the limits for a Class B digital device, pursuant to part 15 of the FCC Rules. These limits are designed to provide reasonable protection against harmful interference in a residential installation. This equipment generates uses and can radiate radio frequency energy and, if not installed and used in accordance with the instructions, may cause harmful interference to radio communications. However, there is no guarantee that interference will not occur in a particular installation. If this equipment does cause harmful interference to radio or television reception, which can be determined by turning the equipment off and on, the user is encouraged to try to correct the interference by one or more of the following measures:
- Reorient or relocate the receiving antenna.
- Increase the separation between the equipment and receiver.
- Connect the equipment into an outlet on a circuit different from that to which the receiver is connected.
- Consult the dealer or an experienced radio/TV technician for help
Changes or modifications not expressly approved by the party responsible for compliance could void the user's authority to operate the equipment.
This device complies with Part 15 of the FCC Rules. Operation is subject to the following two conditions:
(1) this device may not cause harmful interference, and
(2) this device must accept any interference received, including interference that may cause undesired operation.

8