



User Manual

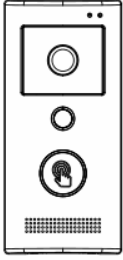



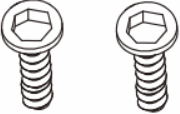
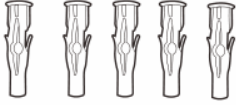

Video Doorbell

QUHWA

VP-K

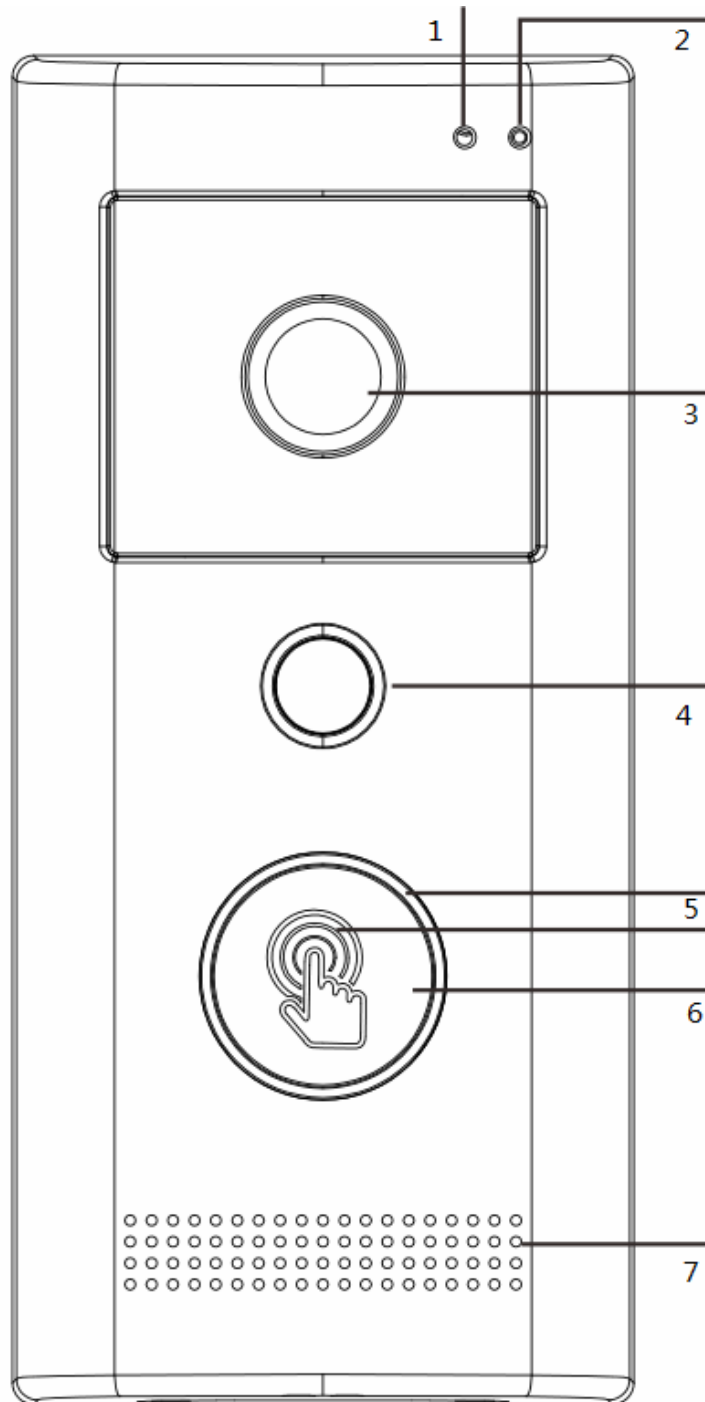
I. Packing List

- A. Video door phone host: 1
- B. Mounting wrench: 1
- C. Manual: 1
- D. Host support: 1
- E. Hex screw: 2
- F. Screw expansion plug: 5
- G. Support screw: 5

 <p>A</p>	 <p>B</p>	 <p>C</p>
 <p>D</p>	 <p>E</p>	 <p>F</p>
 <p>G</p>		

II. Product Diagram

1) Front View



1: Microphone

2: Light sensation window

3: Wide-angle high-definition camera and infrared lamp

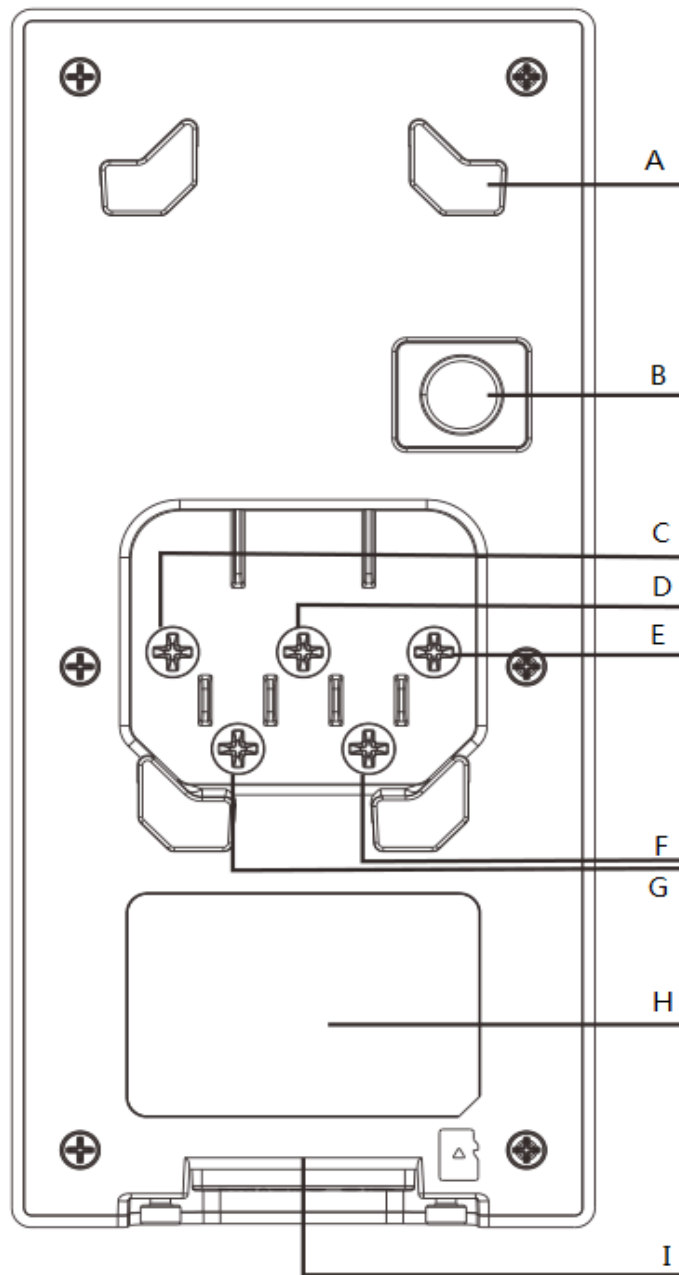
4: Human model sensing window

5: Indicator light

6: Touch key area

7: Loudspeaker

2) Rear View



A: Support fastener

B: Reset button

C: NO (normally open)

D: GND (ground)

E: NC (normally connected)

FG: AC / DC

H: Product Label

I: Micro SD

Connection instructions:

(NO + GND): to magnetic lock

(NC + GND): to electric lock

AC/DC: to AC 8-16V or DC 9-24V, without polarity difference

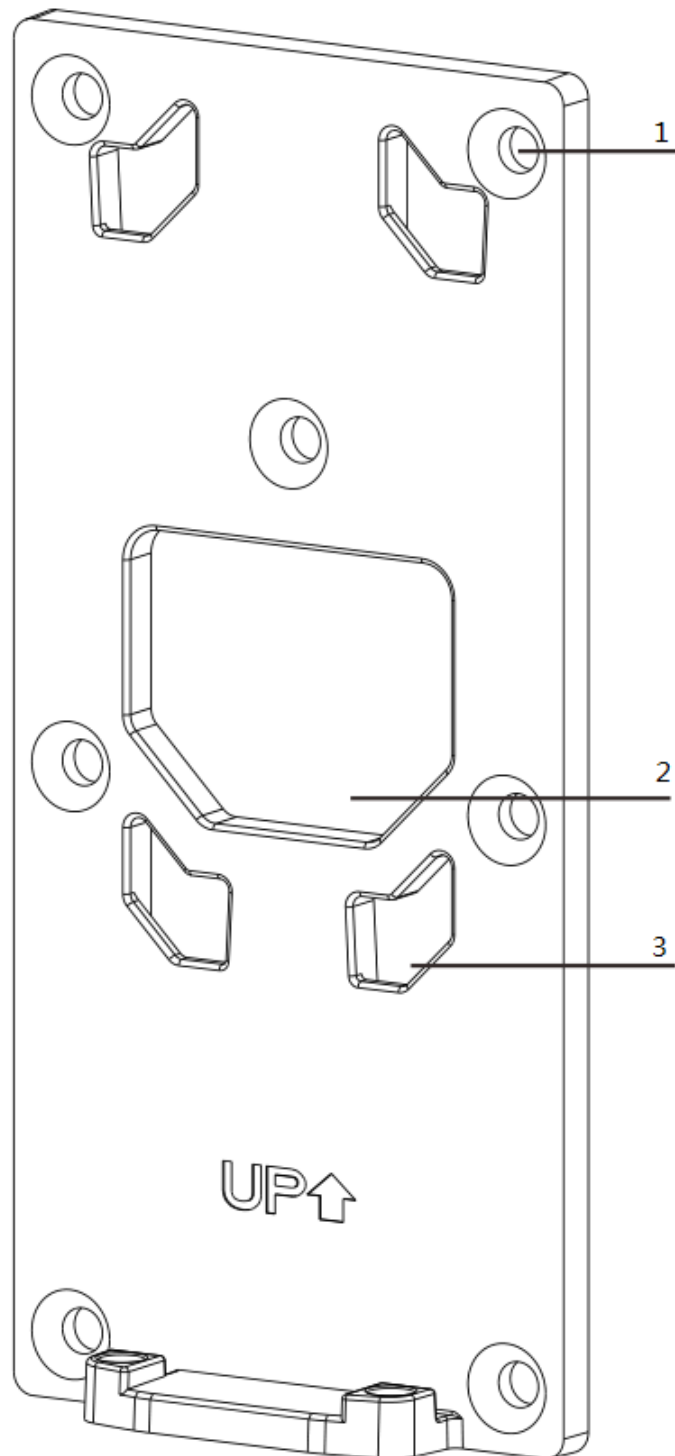
Micro SD: installed/removed in power off state, with a maximum of 64G supported.

Reset button

Operation: Long press the reset button for 5 seconds and release to restore the factory

settings. The device will restart with a prompt tone upon completion.

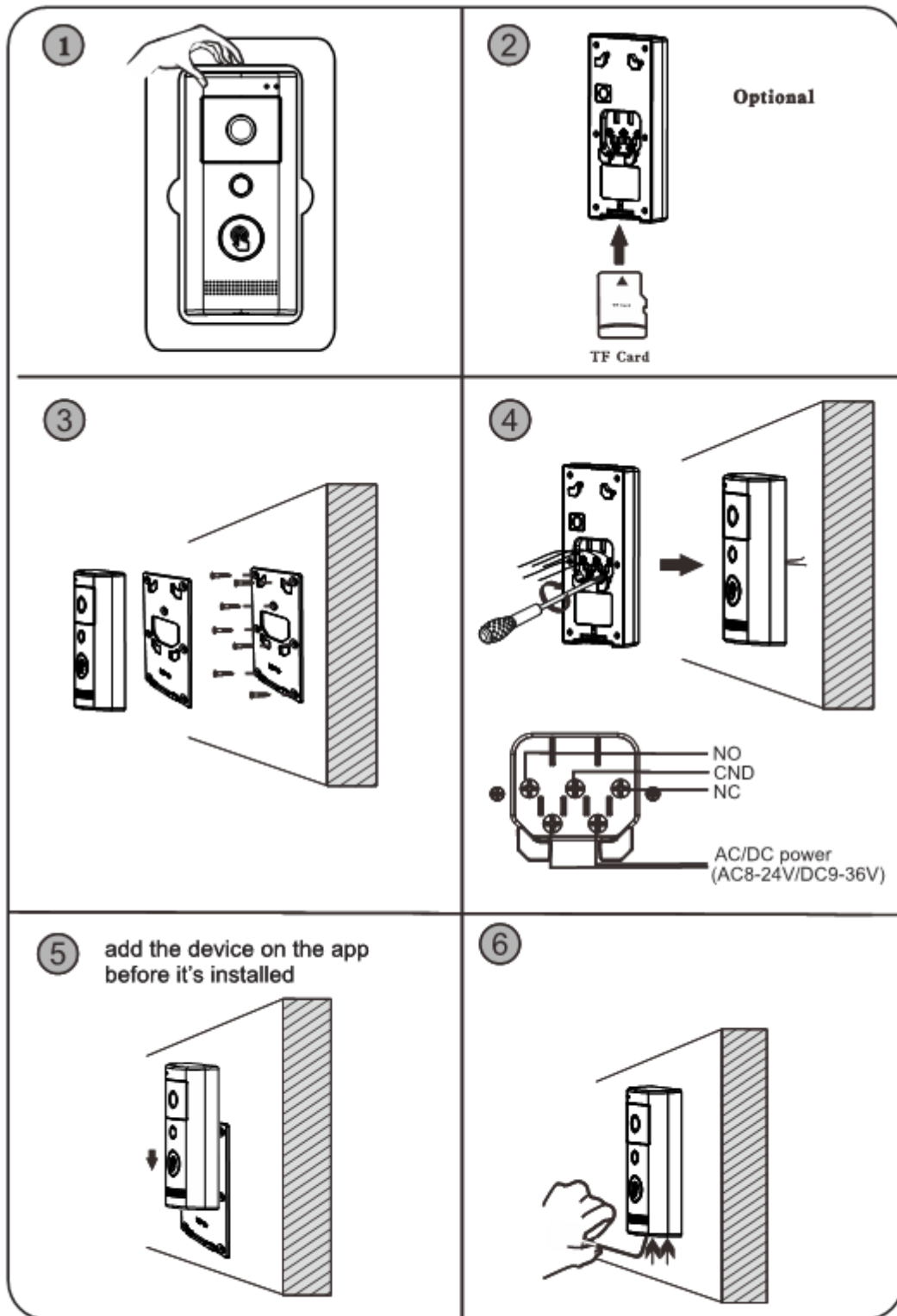
3) Host support



1: Screw fixing hole;
3: Fastener hole.

2: Cord hole

III. Installation Instructions

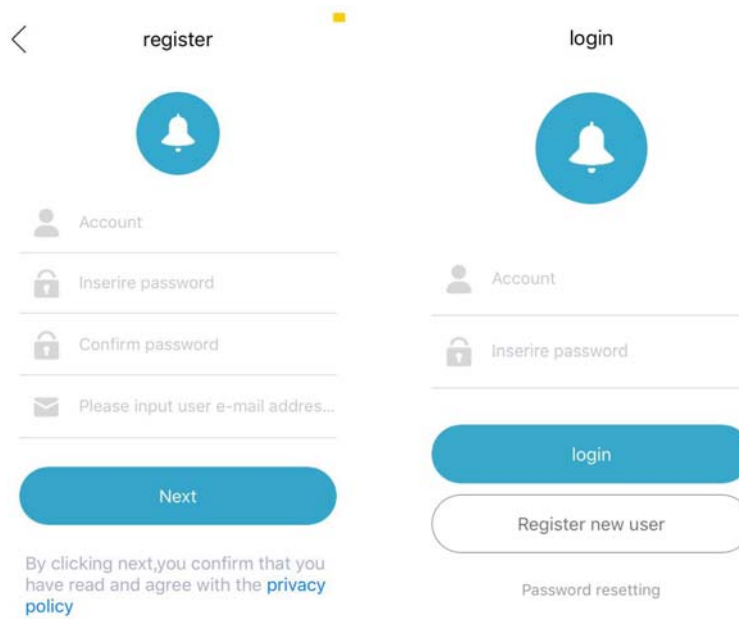


IV. Downloading APP

Search in application market for television



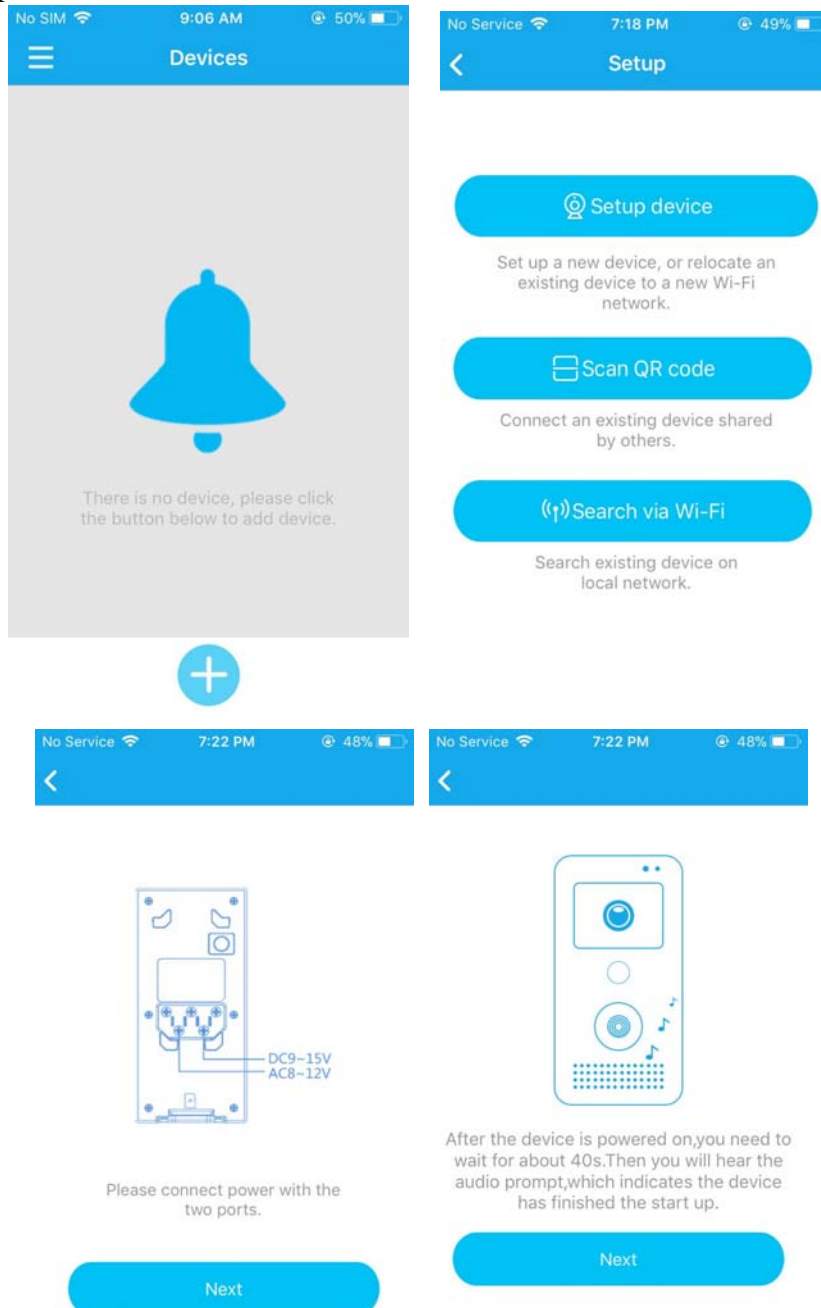
V. Registration and login

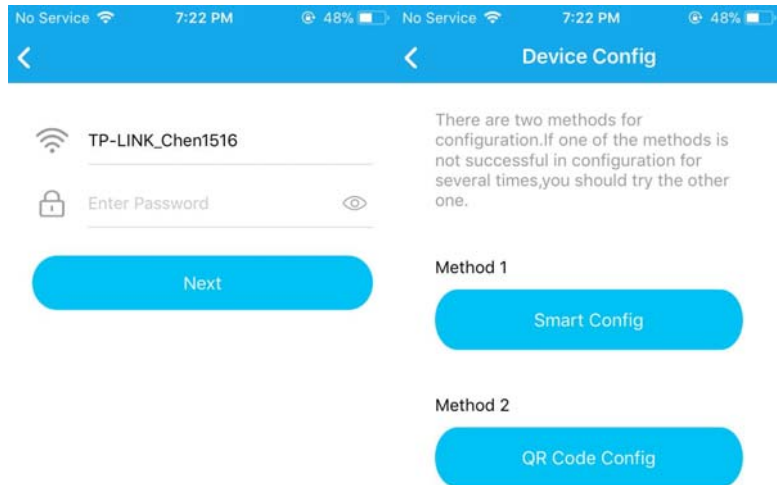
Two side-by-side screenshots of a mobile application's registration and login screens. The left screen is titled 'register' and features a blue circular icon with a white bell. Below the icon are three input fields: 'Account', 'Inserire password', and 'Confirm password'. A fourth field with an envelope icon is labeled 'Please input user e-mail address...'. A blue 'Next' button is at the bottom, with a note: 'By clicking next,you confirm that you have read and agree with the [privacy policy](#)'. The right screen is titled 'login' and features the same blue circular icon. It has two input fields: 'Account' and 'Inserire password'. A blue 'login' button is at the bottom, with a 'Register new user' button below it and a 'Password resetting' link at the very bottom.

VI. Adding equipment

1) Power on the device and wait for the system prompt tone. Device startup completed, before adding the device, make sure the mobile phone has been connected to the 2.4G WIFI network.

2) Open the television app and click "+", Click the Setup device button and enter the Wi-Fi password.

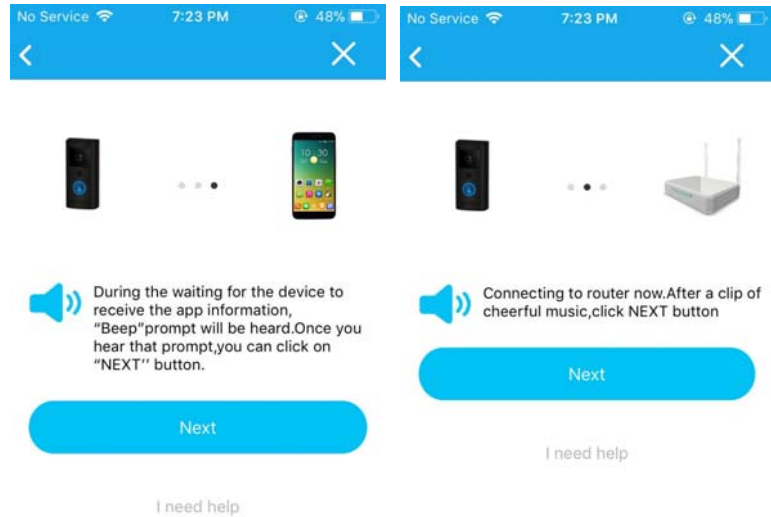




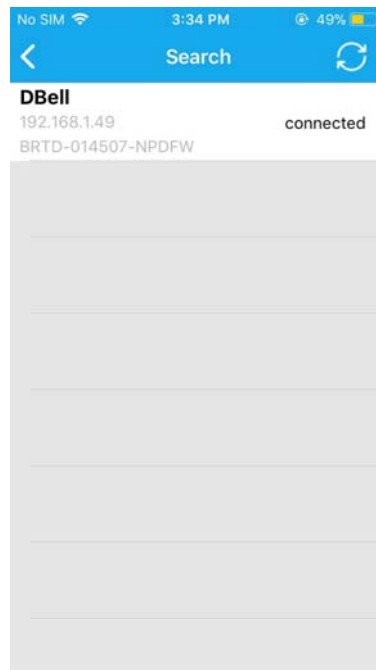
3) Long press the doorbell indicator light, release after the "di-di-di..." tone



- 4) Warning tone two times will be presented during the configuration process:
- The first beep tone indicates success of the device to obtain wifi information;
 - The second whistle indicates success of device configuration.



5) Search the configuration results.



VII. Main function

1) Call answering

When a visitor presses the call button, the indoor ding-dong machine (optional) ring out, and the mobile terminal receives the call information at the same time. Open the software, the call window is displayed against the background of a visitor picture. Operations available are the following: answer, talkback, video, photographing,

unlock and reject.

2) PIR alarm mode

When going out (or at night fortification) and the PRI monitoring mode is turned on, upon detection of someone stops at the doorway, the mobile terminal will receive the alarm screen with a screenshot of the visitor as the background, and at the same time the mobile terminal will emit audio warning to remind the owner to answer or monitor.

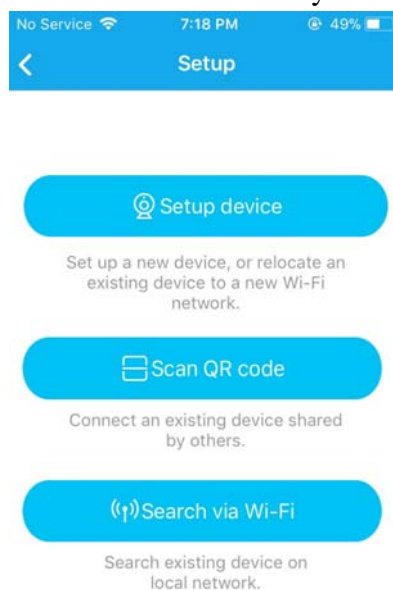
3) History query

In the software main interface, swipe right to enter the menu mode, click the History icon to enter the archive recording interface (the following is an image of cloud storage as an example), click on the corresponding icon to view the corresponding history.

4) New member to add device

"Search" :Search the device which already set up in the same wifi

"Scan QR code" :Scan QR code of device shared by family members.



5) Administrator adds a new username

The administrator needs to add username of the new member in the "Settings - User Management".

6) Device sharing

click "Home page - Device - Device sharing"

中国移动

15:36

50%

Bell

Device Sharing

2018-01-18 15:36:33



Main product parameters

Product Name: WIFI Video Doorbell

Product Model: VP-T10

Video angle range: 120°

Video compression: H.264

Video pixels: HD720P

Audio: Two-way voice intercom, comes with echo cancellation

Loudspeaker: 1W

PIR distance: 3 meters detection

Day-night mode: Automatic switching between photosensitive sensors and
between IR-CUT dual filtering

Night infrared lamp: 5

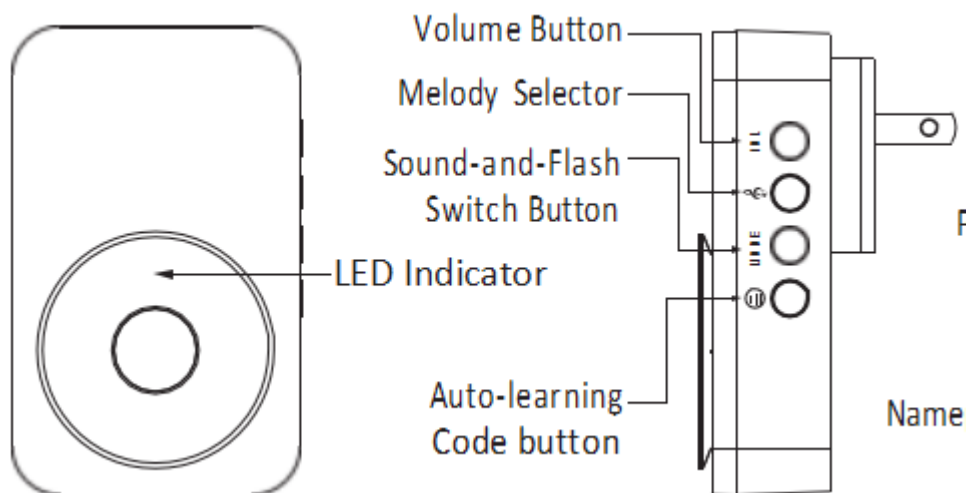
Wireless connection: WIFI 2.4GHz, IEEE 802.11 b/g/n

Power input: AC 8-16V, DC 9-24V

Working with auto-learning code wireless indoor chime

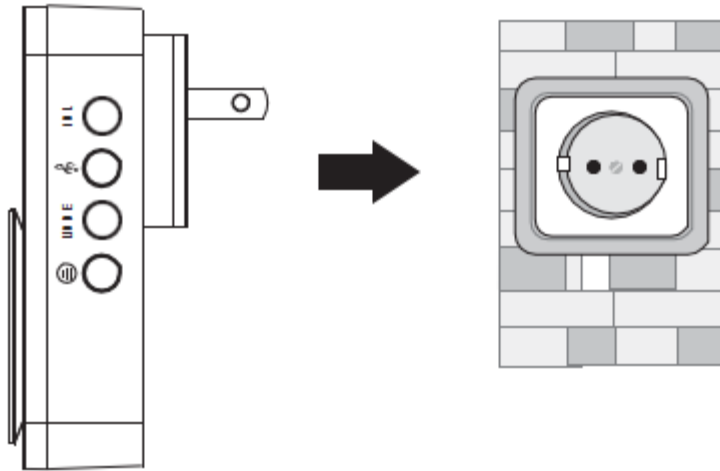
Once the video doorbell and indoor chime are powered in 20seconds,press the call button to complete configuration. The indoor chime will sound if visitor rings the video doorbell in case the smart phone is not available.

Names for Parts:



Receiver Installation:

- Plug the Receiver into any socket of AC110~240V power.



Functions Instruction

1. Press the auto-learning code button on the side of the Receiver and hold for 2 or 3 seconds, A “beep” sound comes out and the LED indication will light. Then press the call button on the video doorbell once. The Receiver will sound to indicate that new operation code is registered and memorized. Thus the video doorbell works successfully with the indoor chime. Maximum 60 codes can be matched and saved in the chime within 10 seconds. If there is no code matched and saved within the 10s, the chime will automatically exit and there will be two “beeps”.
2. There is a melody selector located on the side of the Receiver (see diagram). Selectable Tone: Total 36 melodies available.

Note: You must select the desired ring first, then match the video doorbell. If you want to change ring tones, you must delete all the information saved in the chime and reset.

Press the melody selector button and hold for 5 seconds, you can delete all the information within the chime. At the same time, the LED indicator light will light.

3. There is also a volume button on the side of the Receiver (see diagram). Press it to adjust the sound volume, total six levels.

4. There is a Sound and Flash Switch Button on the side of the receiver. Press this button for three options, working only with sound, only LED flash, sound and LED flash:

A. If a “beep” sound comes out and the LED indicator does not light, the chime will work only with sound.

B. If a “beep” sound comes out and the LED indicator lights, the chime will work with sound and LED flash.

C. If the LED indicator lights without “beep” sound, the chime will work only with LED flash.

Notes:

If the chime sounds for no reason during the digital code setting, it is indicated that it has been interfered by other similar Doorbell nearby, reset the auto-learning code as per point 1 above.

FCC Caution:

This device complies with Part 15 of the FCC rules and Industry Canada license-exempt RSS standard(s). Operation is subject to the following two conditions: (1) this device may not cause harmful interference, and (2) this device must accept any interference received, including interference that may cause undesired operation.

The manufacturer is not responsible for any radio or TV interference caused by unauthorized modifications or change to this equipment. Such modifications or change could void the user's authority to operate the equipment.

This radio transmitter (identify the device by certification number or model number if Category II) has been approved by Industry Canada to operate with the antenna types listed below with the maximum permissible gain indicated. Antenna types not included in this list, having a gain greater than the maximum gain indicated for that type, are strictly prohibited for use with this device.

This equipment has been tested and found to comply with the limits for a Class B digital device, pursuant to part 15 of the FCC Rules. These limits are designed to provide reasonable protection against harmful interference in a residential installation. This equipment generates, uses and can radiate radio frequency energy and, if not installed and used in accordance with the instructions, may cause harmful interference to radio communications. However, there is no guarantee that interference will not occur in a particular installation. If this equipment does cause harmful interference to radio or television reception, which can be determined by turning the equipment off and on, the user is encouraged to try to correct the interference by one or more of the following measures:

- Reorient or relocate the receiving antenna.
- Increase the separation between the equipment and receiver.
- Connect the equipment into an outlet on a circuit different from that to which the receiver is connected.
- Consult the dealer or an experienced radio/TV technician for help.

The device has been evaluated to meet general RF exposure requirement.

To maintain compliance with FCC's RF exposure guidelines, this equipment should be installed and operated with a minimum distance of 20cm between the radiator and your body.