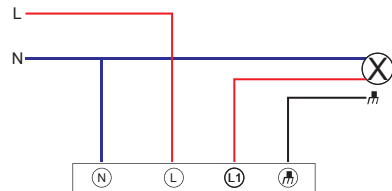


Wi-Fi Light Switch
Ref: SP-N01NL
Instruction Manual

1. Packaging List:

- 1x Switch
- 1x Manual
- 1x Accessories set

2. Wire Connection:

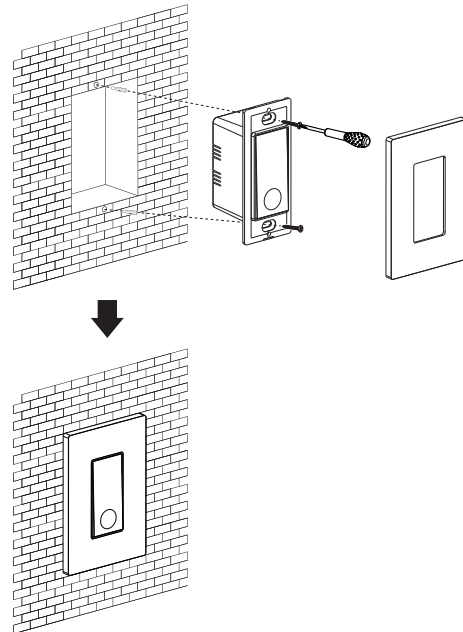


3. Installation:

This product must be installed in accordance with the installation rules and preferably by a qualified electrician. Incorrect installation and / or incorrect use may cause risk of electric shock or fire. Cut the power supply before any intervention.

Strip around 8mm cables to have a good contact surface.

- Attach the wires according to Wire Connection.
- Install the switch with wall box which is already fixed in the wall.
- Mount the cover face to the switch.
- Switch on the power.



4. APP Setup:

Download free app **Tilvision**, available on the iOS App Store or on Android Google Play.

Create your account following the instructions in the application. Click '+' to add device and follow the installation wizard in the application.

Warning: In case the Wi-Fi network or password changed, press the pairing button 5 until LED blink blue and red. Then follow the instruction in the app to add the device again.

5. Use:

On the switch :
Turn on / off the light by pressing button.

With the remote control:
Press the 'ON' ('OFF') button on remote control to turn the light on (of).

With your smartphone, via Tilvision:
Switch On/Off on app from anywhere.

6. Technical Specification:

- Power Input: AC 100V-240V
- Wi-Fi coverage: <15M
- Max.: 200W



RF Exposure Information

This equipment complies with FCC radiation exposure limits set forth for an uncontrolled environment. This equipment should be installed and operated with minimum distance of 20 cm between the radiator and your body. This transmitter must not be co-located or operating in conjunction with any other antenna or transmitter.

Changes or modifications not expressly approved by the party responsible for compliance could void your authority to operate the equipment.