

USER MANUAL

GARDEN LASER LIGHT

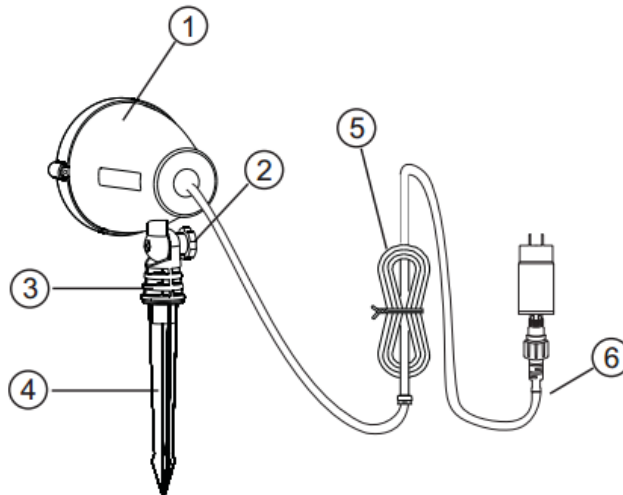
MODEL NO.: QS-25C

It is very important to operate this product according to the following instructions. Failure to do so may render your guarantee void.

CONTENTS

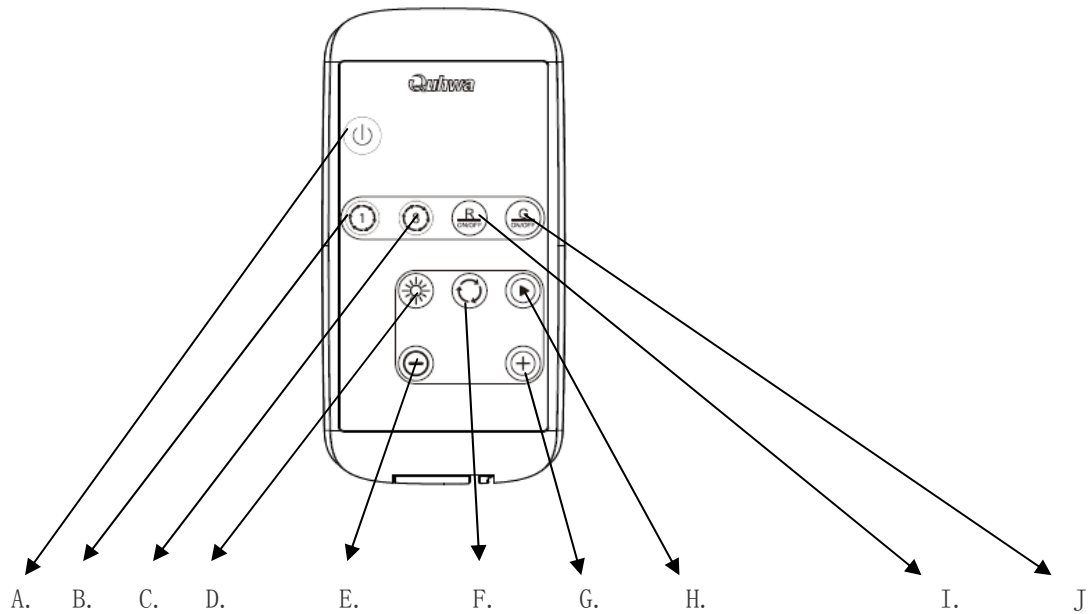
● 1x Laser Light ● 1x Screw ● 1x Stake ● 1x Bracket ● 1x User Manual ● 1x Adapter ● 1x Remote Control(with a CR2032 Battery)

Names for Parts



- ① Main Unit
- ② Screw
- ③ Bracket
- ④ Stake
- ⑤ Insert Cable
- ⑥ IP44 Adapter

RF Remote Control



- A. Power ON/OFF
- B. Choose any 1 from 8 Patterns
- C. 8 Patterns Cycling(20s for every one)
- D. Laser Light Blink Alternately Only
- E. Rotating or Blink Speed –
- F. Laser Light Rotating
- G. Rotating or Blink Speed +
- H. Laser Light Static
- I. Red Laser Light ON/OFF
- J. Green Laser Light ON/OFF

SPECIFICATIONS:

- Power Input: AC120V 60Hz/50Hz
- Power Output: DC 5V 2000mA
- Spike height: 7.79 in. (198mm)
- Coverage: Up to 25 ft x 25 ft
- Working temperature: -30°C (-22°F) to 35°C (95°F)
- Laser Power: Red: (650nm) <1.5mW; Green: (532nm) <1mW
- Dimension: Max. Diameter 4.45 in. (113 mm) x length 4.58in. (116.5mm)
- IP protection: IP65 for the device and IP44 for the adapter
- Materials: Aluminum alloy casing and spike
- Indoor and Outdoor Use
- Laser classification: Class IIIa
- Light projecting angle: 140°
- Light coverage: 144 sq. meters from 8 meters distance
1550 sq. feet from 26.25 feet distance
- Light features: Rotating, Blink, Static Red Pin-points and Green 8 Christmas Patterns / 8 Halloween Patterns
- RF remote control distance: 25m(82ft.)

Quick Setup

1. Remove all the components from packaging and saving packaging to store laser light when not in use. Please make sure that there are 1x Laser Light, 1 x Screw, 1 x Bracket, 1 x Stake, 1 x stand, 1x Adapter, 1x Remote Control and 1 x User Manual in the packaging.

2. Install the **laser light**:

1)Find a location where is no obstructions between light and its projecting surface for the laser light.

2). Fix the bracket into the laser with screw, and then insert the stake or stand to the bracket in the right way.

Attention: Please be sure the laser is unplugged before installation.

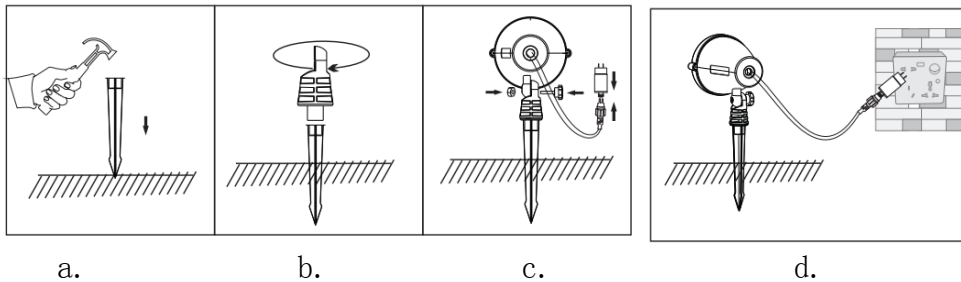
3) Installation

a, Insert the pointer on top of the stake vertically into the earth by holding the top of stake. Use hammer or a wooden mallet to gently pound spike deeper into the ground if it is too hard.

b, Screw the bracket into the stake.

c, Fix the laser projector on the bracket with screw and adjust to the appropriate angle. Connect the two round-pins of input wire to the waterproof adapter in a right way, and tighten the coupler securely.

e, Connect the adapter to a working GFCI power socket when ready to use.



4). Unplug when not in use.

Note: The darker the area the light being used in, the brighter the projection. Try to stay away from areas with bright illuminating lights.

Operate the Remote:

1, Press any button on the remote, the laser light will work on the mode.(See the remote control parts)

2, Function memory, from Off to On by pressing RF remote, the light will return to the mode before closing.

3, Please operate the RF remote control within distance: 25m(82ft.)

4, Please remove the insulation sheet when you start to use the remote at the first time.(Icon A)

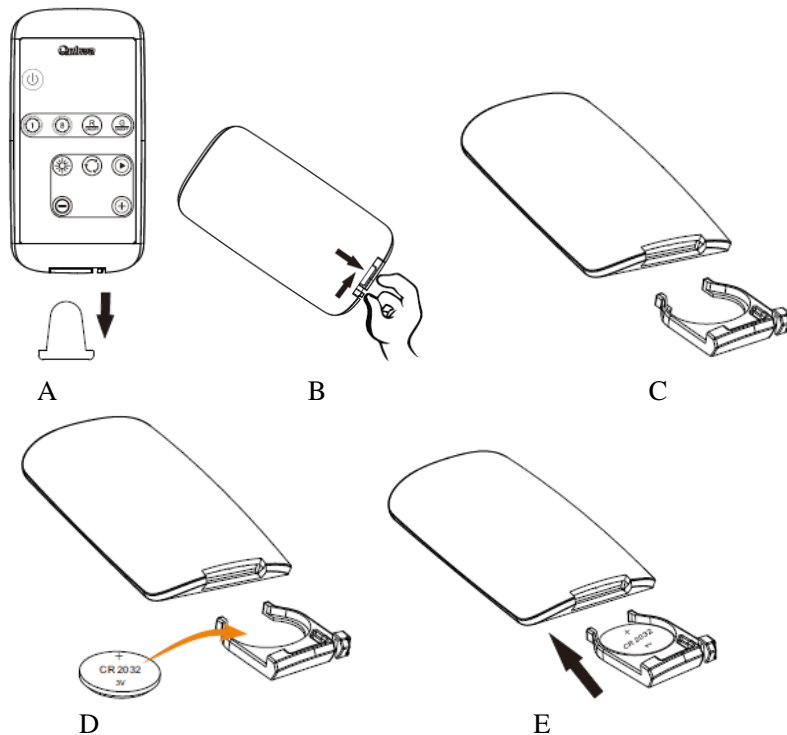
5, Please use CR2032 cell battery if the remote's power runs out.

Steps:

1), Pull out cell cabin by hand from the bottom of the remote.(Icon B, C)

2),Put one CR2032 cell with positive polarity up(read the marks on the remote) in the cell cabin.
(Icon D)

3), Push the cell cabin in the slot.(Icon E)



Built-in Timer

The device is designed to automatically shut off after 6 hours lights working in the dark, and it will go into sleep mode for 18 hours and repeat the same operation thereafter.

IMPORTANT SAFETY INSTRUCTIONS

1. No recommended for set-up or installation by children. As with all electrical products, exercise caution during handling and use to reduce the risk of electric shock. If the power cord is damaged, it must be replaced by the manufacturer, its service agent or similarly qualified persons in order to avoid a hazard.
2. To reduce the risk of burns, fire, electric shock, or injury to persons, unplug from outlet before putting on or taking off parts.
3. Close supervision is necessary when this furnishing is used by, or near children, invalids, or disabled persons.
4. Use this furnishing only for its intended use as described in these instructions. Do not use attachments not recommended by the manufacturer.
5. Keep the cord away from heaters or other heated surfaces.
6. Do not operate where aerosol (spray) products are being used or where oxygen is being administered.
7. To disconnect, turn all controls to the off position, then remove plug from power socket.
8. The furnishing has not been evaluated for flammability or cigarette ignition resistance!
9. Route the power supply cord away from walkways, driveways and traffic areas to prevent trip hazards and damage to the power supply cord.
10. Do not shake.

11. ONLY ALLOW USE BY RESPONSIBLE PERSONS

This is not a toy. Children can safely use Class **IIIa** lasers only with continuous adult supervision.

12. This product was designed for indoor and outdoor use.
13. This seasonal use product is not intended for permanent installation or use.
14. Unplug the product when leaving the house, then retiring for the night, or if left unattended.

IMPORTANT

Damages caused by the disregard of this user manual are not subject to warranty. The dealer will not accept liability for any resulting defects or problems. Keep away from heaters and other heating sources! If the device has been exposed to drastic temperature fluctuation (e.g. after transportation), do not switch it on immediately. Leave the device switched off until it has reached room temperature. Please note that damages caused by manual modifications on the device or unauthorized operation by unqualified persons are subject to warranty. Keep young children and amateurs away from the device!

PRECAUTIONS

1. To reduce the risk of fire or shock hazard, use laser light only with specifically designated extension cord. Do not expose this appliance to rain or moisture.
2. All laser light for Household Use Only
- 3. In cold winter, it is just normal for the laser light being off or dim when you start to open a cold machine, but the light will recover normally after the inner warming machine being warming up the laser machine for 10~20 minutes to reach its working temperature.**
4. This Garden Laser light should be used at allowed working temperature: -30°C(-22°F) to 35°C(95°F)

SAFE USE GUIDANCE - GENERAL

A Class IIIa laser is low powered. It normally would not harm eyes during a momentary exposure of less than ¼ second. This is within the aversion response, where a person turns away and/or blinks to avoid bright light.

Do not deliberately look or stare into the laser beam. Laser protective eyewear is normally not necessary. A Class IIIa laser is not a skin or materials burn hazard.

However, a Class IIIa laser can be a distraction, glare or flash blindness hazard for pilots and drivers.

NEVER aim any laser towards an aircraft or vehicle that is in motion. This is unsafe and is illegal -- you could be arrested and jailed.

WARNING:

Within 10 nautical miles of an airport, never project the laser beams into sky. If you are located in the area within 10 nautical miles of an airport, we recommend the laser be pointed at the wall or the ground so that no lasers point into the air!



This device complies with Part 15 of the FCC Rules. Operation is subject to the following two conditions: (1) this device may not cause harmful interference, and (2) this device must accept any interference received, including interference that may cause undesired operation.

Changes or modifications not expressly approved by the party responsible for compliance could void the user's authority to operate the equipment.



This device complies with 21 CFR chapter I, Subchapter J,
CFR1040.10 and 1040.11 of the FDA Rules.

The FDA requires labels on most laser products that contain a warning about the laser radiation and other hazards, and a statement certifying that the laser complies with FDA safety regulations. The label must also state the power output and the hazard class of the product. For your protection, warning labels and product identification labels have been affixed on the product. These labels should not be removed.

CAUTION

EYE INJURY HAZARD -- DIRECT AND REFLECTED BEAM LASER RADIATION – DO NOT STARE INTO BEAM OR VIEW DIRECT WITH OPTICAL INSTRUCTIONS!

Class **IIIa** visible-light lasers are considered safe for unintentional eye exposure, because a person will normally turn away or blink to avoid the bright light. Do NOT deliberately look into or stare into the beam -- this can cause injury to the retina in the back of the eye.

Be aware of beam reflections off glass and shiny surfaces. Depending on the surface, the reflected beam could be about as strong and as focused as a direct beam.

Maintenance and Cleaning

- Maintenance and cleaning shall only be done to the product surface. Unplug this product from the power socket before cleaning.
- Do not wet any electric parts of this product. Please use a dry, soft cloth instead of sharp tools for cleaning.
- When not in use, store neatly in a cool, dry location protected from sunlight.
- Please keep away from heaters and other heating sources.

WEEE Directive & Product Disposal

At the end of its serviceable life, this product should not be treated as household or general waste. It should be handed over to the applicable collection point for the recycling of electrical and electronic equipment.

