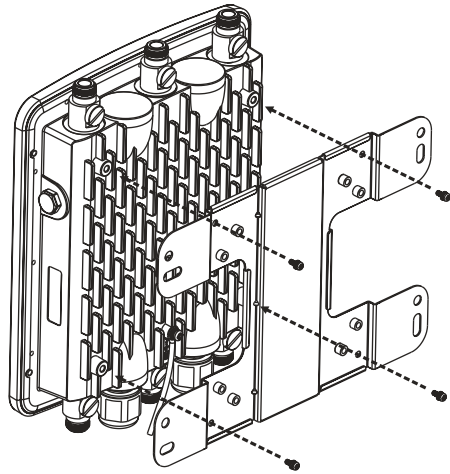
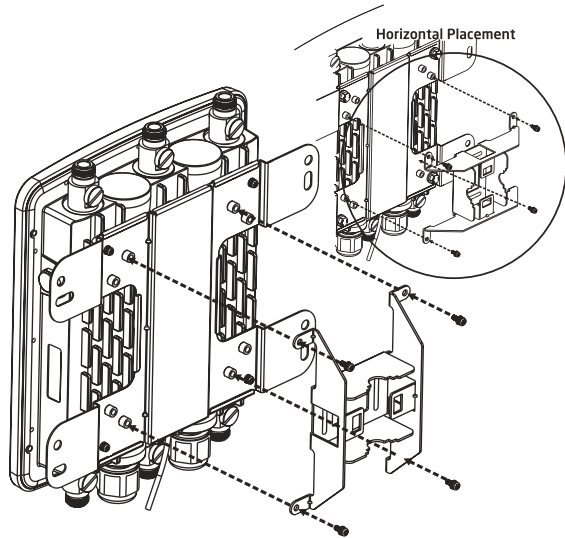


# POLE MOUNTING THE AP

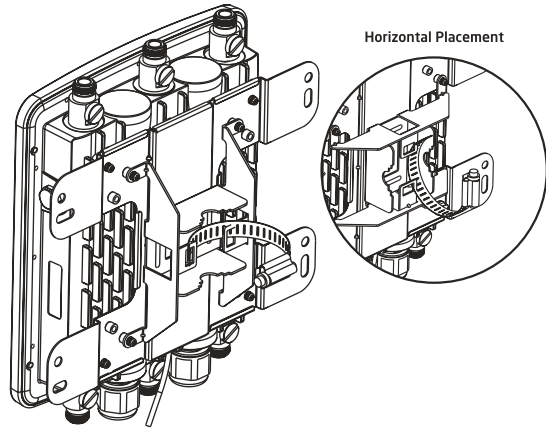
A) Place the lock and flat washers on the four cap screws and drive the screws to attach the bracket to the back of the Access Point.



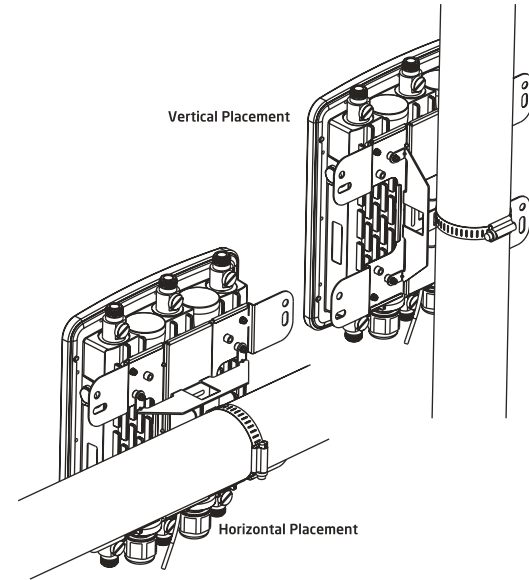
B) Determine which placement to be assembled. Drive the four round head screws to attach the Pole Mount Bracket to the bracket.



C) Thread the open end of the Pole Strap through the two tabs on the Pole Mount Bracket.



D) Lock and tighten the Pole Strap to secure the Pole Mount Bracket to the pole.



# THANK YOU!

LET'S GET YOUR GATEWAY STARTED...

## 1. POSITION DEVICE

The AP can be mounted to a wall or a pole using the attached mounting kit. Make sure to mount all antennas as indicated on the device (2.4GHz and 5GHz). Please refer to the corresponding mounting instructions on the following pages.

## 2. CONNECT POWER

The AP can only be powered by PoE+ (IEEE 802.3at) via LAN1. Supply power by connecting this port either to a PoE+ injector or a PoE+ capable switch port.

## 3. CONNECT INTERNET

Connect the AP to your local network. In order to find its managing Ocedo Connect instance the AP has to be able to access the internet. Hence, the network needs to provide a DHCP service so the AP can establish a connection automatically.

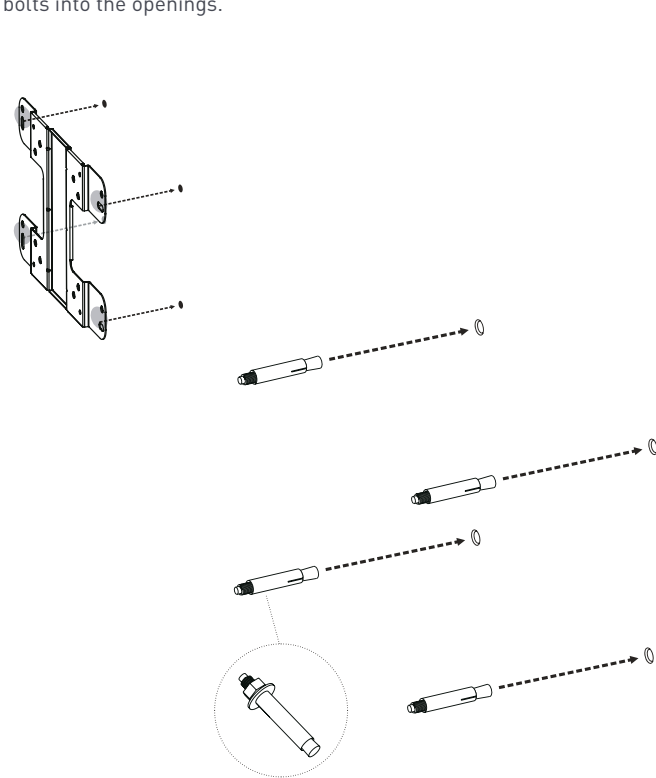
**FINISHED.**

Need help?

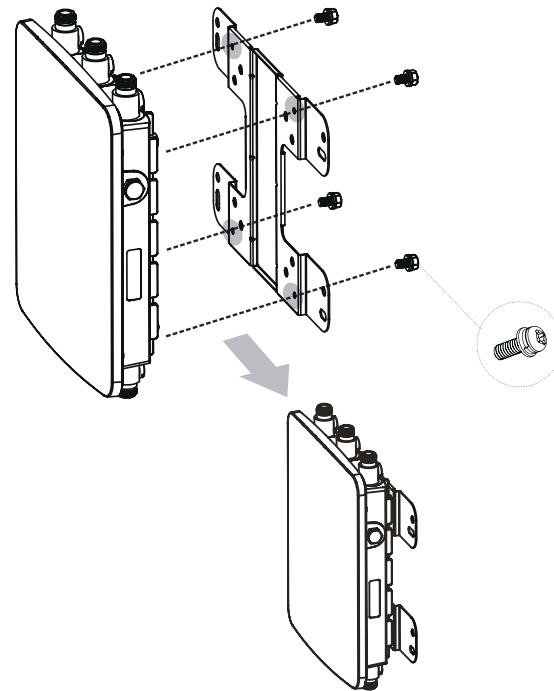
[support@ocedo.com](mailto:support@ocedo.com) | +49 (721) 754 03 444 | [www.ocedo.com](http://www.ocedo.com)

## WALL MOUNTING THE AP

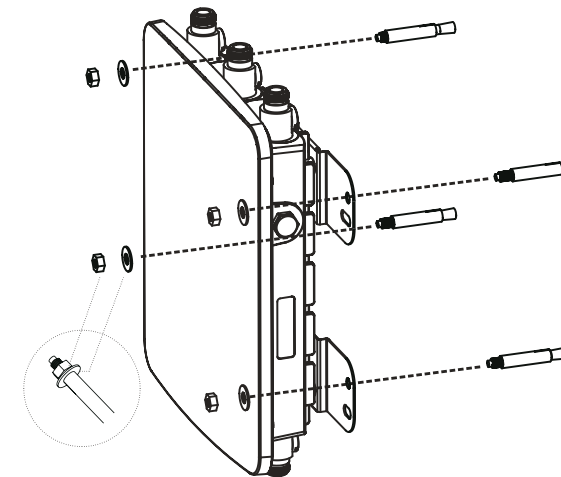
- A) Mark the four locations of the mounting holes on the flat mounting surface.
- B) Drill four 37mm deep 8mm holes in the markings and hammer the bolts into the openings.



- C) Place the lock and flat washers on the four cap screws and drive the screws to attach the bracket to the back of the Access Point.



- D) Attach the device onto the wall by tightening the bolt's flat washers and nuts to secure the bracket to the mounting surface.



POE RATING  
PoE Input: 48Vdc, 0.8A  
PSE Output: 54Vdc, 0.3A

### GROUNDING STRAP

Connect one end of the grounding strap to grounding post with included screw and washer. Securely attach it to another nearby metal structure.

### RESTRICTED ACCESS LOCATION

For equipment intended for installation in a Restricted Access Location. This product can only be accessed by service person.



WARNING  
HOT SURFACE  
DOT NO TOUCH

### TEMPERATURE RANGES

Operating temperature: -20°C - 70°C  
Storage temperature: -30°C - 80°C

## Professional installation instruction

### 1. Installation personal

This product is designed for specific application and needs to be installed by a qualified personal who has RF and related rule knowledge. The general user shall not attempt to install or change the setting.

### 2. Installation location

The product shall be installed at a location where the radiating antenna can be kept 41cm from nearby person in normal operation condition to meet regulatory RF exposure requirement.

### 3. External antenna

Use only the antennas which have been approved by the applicant. The non-approved antenna(s) may produce unwanted spurious or excessive RF transmitting power which may lead to the violation of FCC limit and is prohibited.

### 4. Installation procedure

Please refer to user's manual for the detail.

### 5. Warning

Please carefully select the installation position and make sure that the final output power does not exceed the limit set force in relevant rules. The violation of the rule could lead to serious federal penalty.

## Federal Communication Commission Interference Statement

This equipment has been tested and found to comply with the limits for a Class B digital device, pursuant to Part 15 of the FCC Rules. These limits are designed to provide reasonable protection against harmful interference in a residential installation. This equipment generates, uses and can radiate radio frequency energy and, if not installed and used in accordance with the instructions, may cause harmful interference to radio communications. However, there is no guarantee that interference will not occur in a particular installation. If this equipment does cause harmful interference to radio or television reception, which can be determined by turning the equipment off and on, the user is encouraged to try to correct the interference by one of the following measures:

- Reorient or relocate the receiving antenna.
- Increase the separation between the equipment and receiver.
- Connect the equipment into an outlet on a circuit different from that to which the receiver is connected.
- Consult the dealer or an experienced radio/TV technician for help.

FCC Caution: Any changes or modifications not expressly approved by the party responsible for compliance could void the user's authority to operate this equipment.

This device complies with Part 15 of the FCC Rules. Operation is subject to the following two conditions:

- (1) This device may not cause harmful interference, and
- (2) this device must accept any interference received, including interference that may cause undesired operation.

## IMPORTANT NOTE

FCC Radiation Exposure Statement:

This equipment complies with FCC radiation exposure limits set forth for an uncontrolled environment. This equipment should be installed and operated with minimum distance 41cm between the radiator & your body.