



東莞市仕研電子通訊有限公司  
DONGGUAN SEYA ELECTRONIC COMMUNICATION CO.,LTD

## Parameter Testing Report

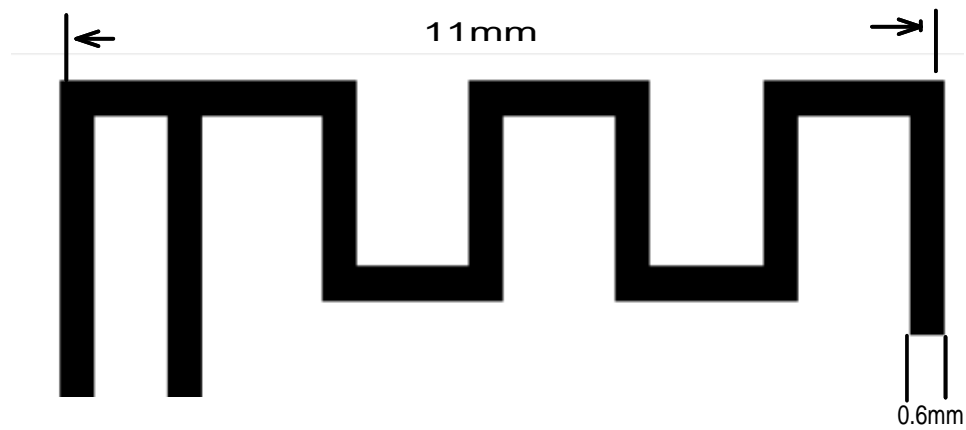
- ✚ Project:WIFI Antenna
- ✚ Product Description
  - 2400-2500MHz

- ✚ Report Date: 2022.10.28
- ✚ Report Version: 1.0
- ✚ Prepared by: Patrick
- ✚ Approved by: Jammy

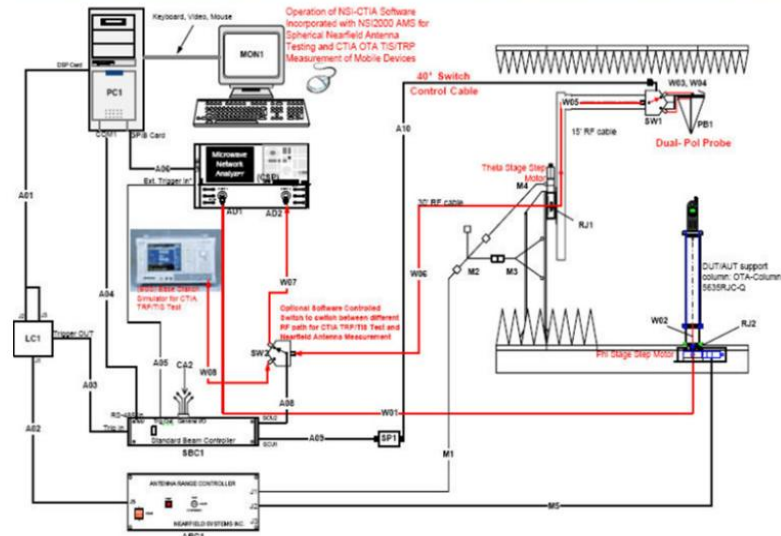
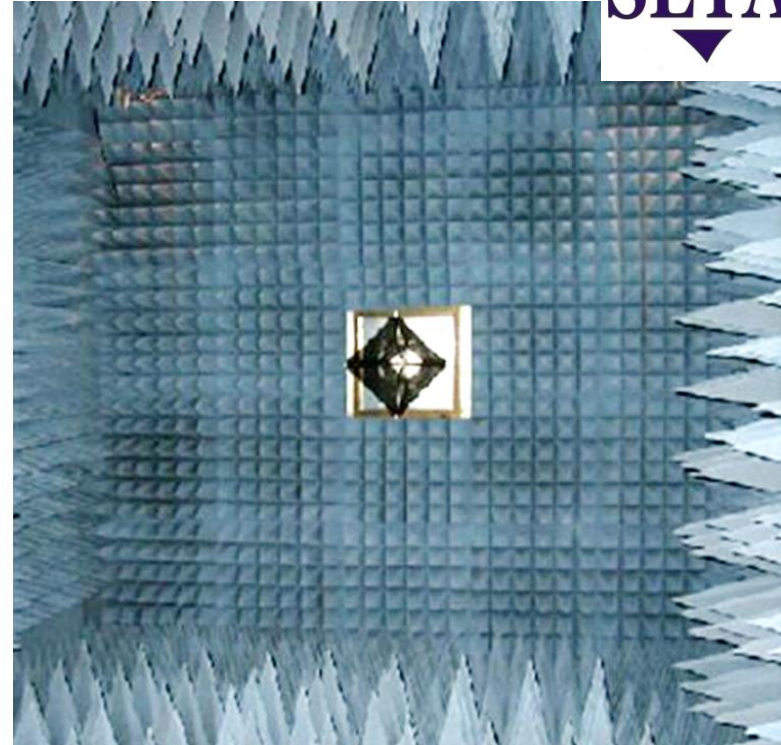
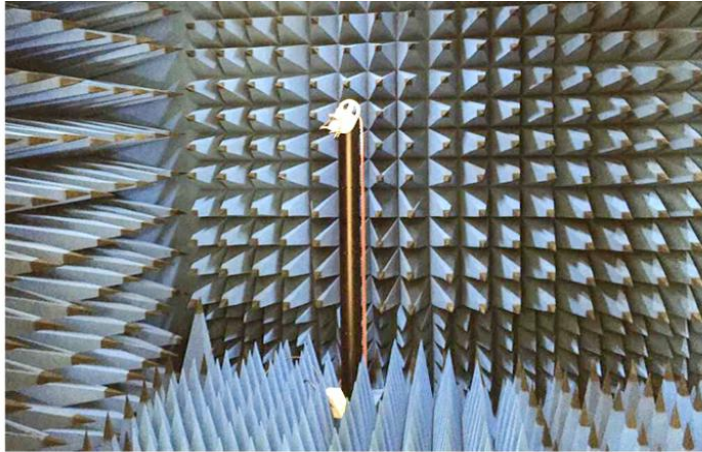
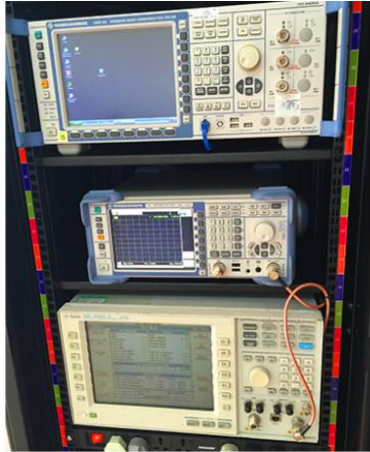
## ◆ Contents:

- ◆ 1. Testing Item & Equipment
- ◆ 2. S-Parameters Test Results
- ◆ 3. GAIN & Efficiency TEST

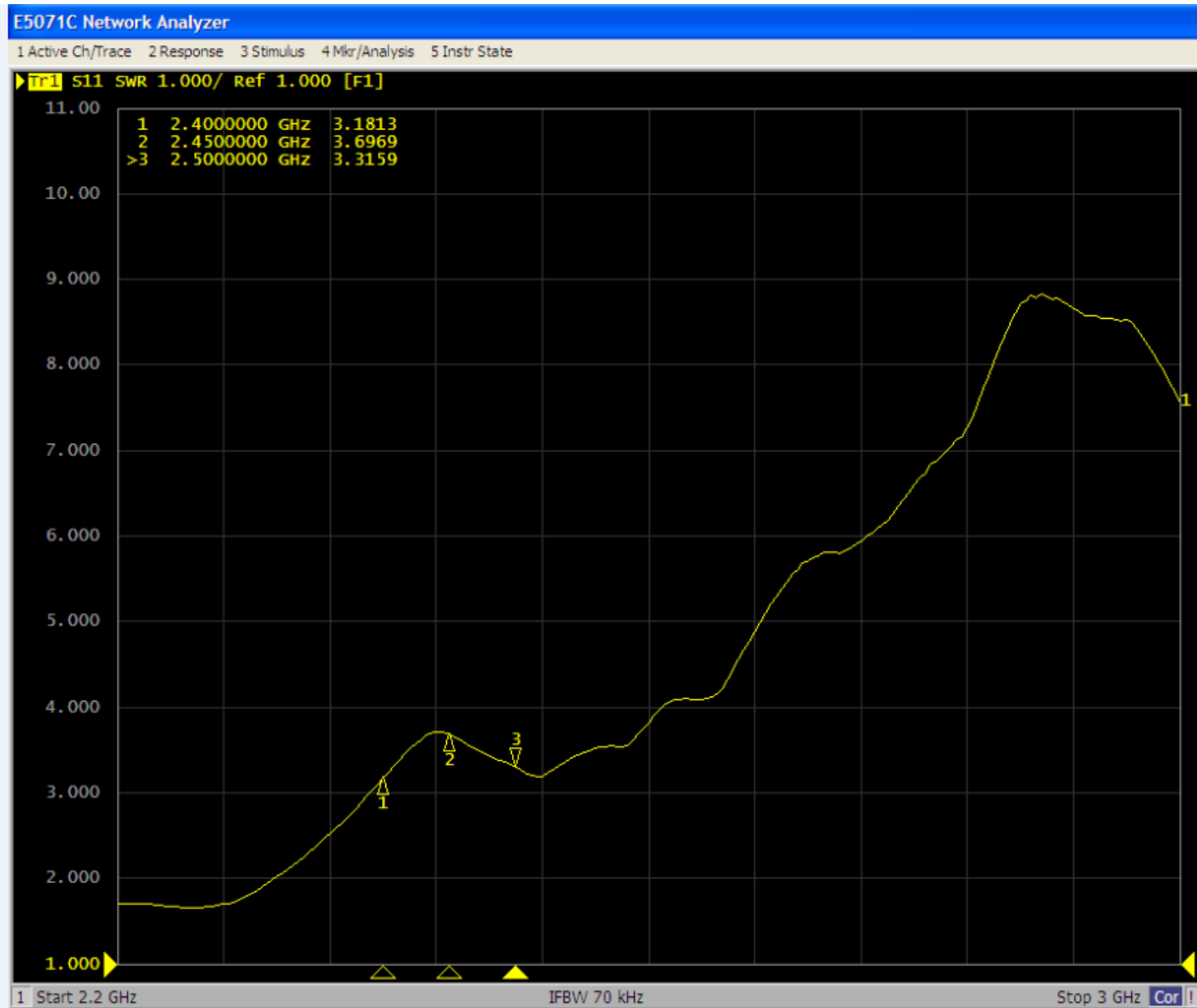
# Antenna appearance figure



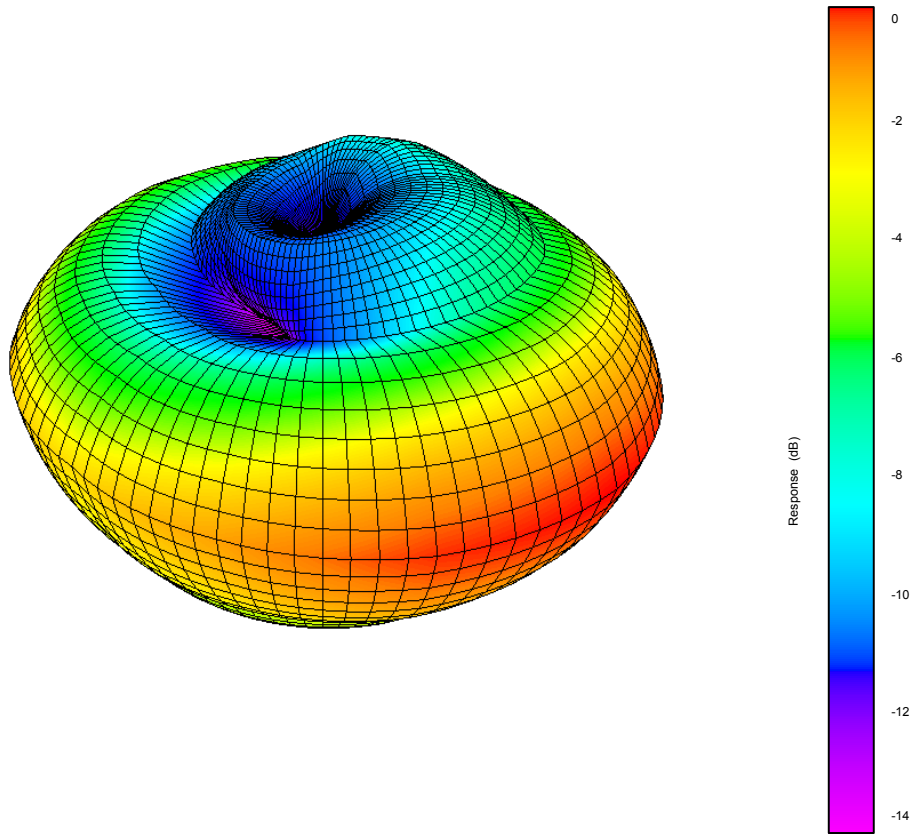
# 1. Testing Item & Equipment



# 2.VSWR TEST



# GAIN& Efficiency TEST



参数\频率(mhz)	2400	2450	2500
Peak Gain(dBi)	-0.69	0.00	-1.12
Efficiency(%)	54.56	58.09	60.77