

TX-P2 10,000mAh

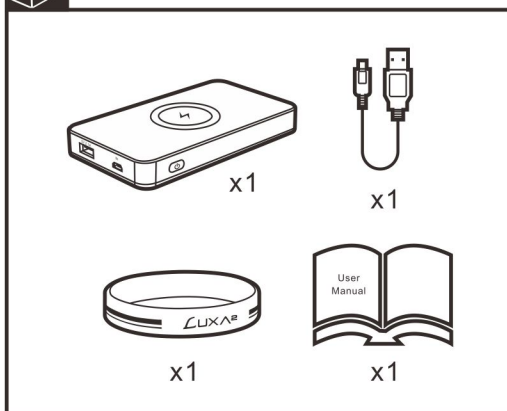
Wireless Charging Power Bank

QUICK START GUIDE

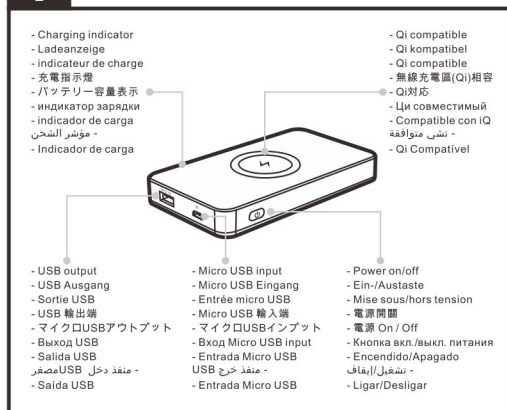
Lifestyle



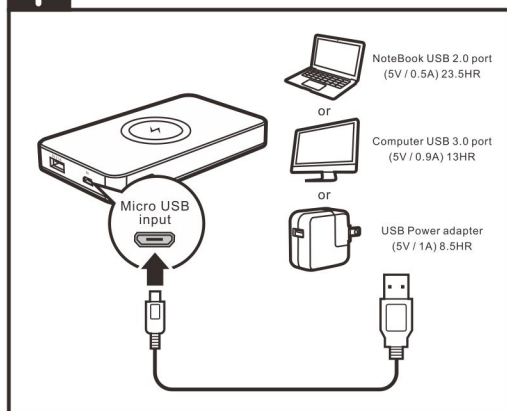
Package Contents



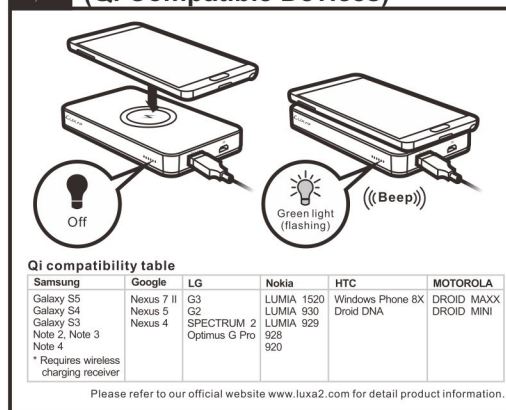
Buttons & Controls



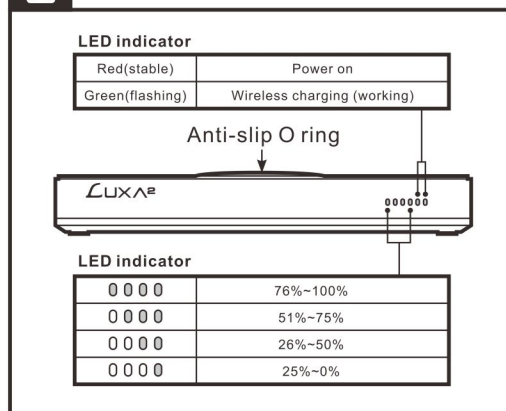
DC In(0~100%)



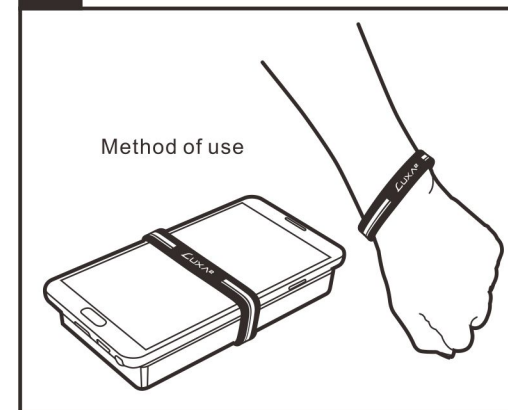
Wireless Charging (Qi Compatible Devices)



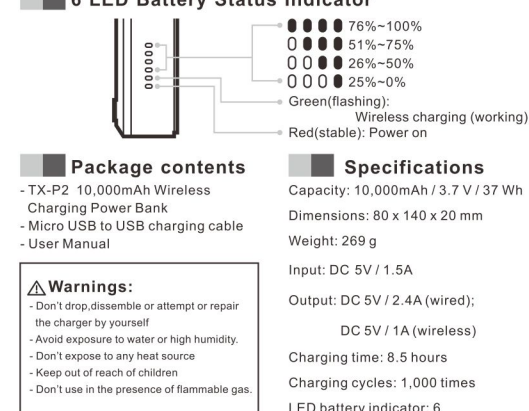
Battery Indicator



Dual Function Wristband



6 LED Battery Status Indicator



TX-P2 10,000mAh

Wireless Charging Power Bank

QUICK START GUIDE

Dear Valued Customer,
In order to protect your consumer rights, please ensure that at the time of purchase you fill out the provided warranty certificate, coupled with the retailer stamp so as to ensure valid warranty.
親愛の顧客您好，為了保障您的權益，請您在購買時，立即請經銷商填寫購買日期並蓋店章，也請妥善保存保固書，才能享有本公司之完整售後服務。

Product Name* (品名*)			
Serial number* (序號*)			
Date of purchase* (購買日期*)			
(AD)	(Year)	(Month)	(Date)
西元	年	月	日
Store of purchase (Official stamp required) 經銷店章*(請務必蓋章保固方為有效)			
<ul style="list-style-type: none"> Warranty period begins on the date of purchase of brand new, unused products by first-end user. Please retain receipt and warranty certificate as proof of purchase. If within warranty period, the product is determined defective, please return to the original store of purchase for a replacement. For additional services, please email info@luxa2.com or contact one of our global offices, of which, details can be found on the previous page. 本蓋店章及未填上購買日期，則保固期限以產品序列號所查到的出貨日期開始計算。 送修流程：聯絡經銷店章→退回不良品→店章維修→返修回廠寄 如需其他服務，請寄電子郵件至 info@luxa2.com 信箱或直接聯繫LUXA2全球分公司暨辦事處，詳情請洽 LUXA2 官網 http://www.luxa2.com/tw/ 			

Tt Community Forum
Our discussion forum has been created with the goal of bringing you closer to us, and us closer to you. It is here that we aim to showcase all our latest products and ideas, to seek your valuable opinion, and to ultimately deliver the perfect user experience for you and your lifestyle. By registering, you will be provided with all the latest news/events and promotions regarding LUXA2 as to ensure you never miss out on any important stuff!
Regular monthly giveaways provide a chance for you to win all sorts of exciting prizes.
All you have to do is follow these simple steps:
1. Register an account for free here - <http://community.thermatake.com/>
2. Take a photo of your newly purchased LUXA2 product
3. Upload onto the relevant 'Owner's Club' category on the LUXA2 boards
Each month, we will review all new uploads and the one that is deemed most creative to your lifestyle, will win the prize of the month.
We look forward to seeing you!



Deutsch

4 LED Batterie-Statusanzeige

- 76%~100%
- 51%~75%
- 26%~50%
- 25%~0%

Grün (blinkend): Drahtloses Laden (lädt)
Rot (Dauerlicht): Energieversorgung eingeschaltet

Lieferumfang
- TX-P2 10,000mAh Wireless Charging Power Bank
- Micro-USB-zu-USB-Ladekabel
- Anleitung

Technische Daten
Kapazität: 10,000mAh / 3.7 V / 37 Wh
Abmessungen: 80 x 140 x 20 mm
Gewicht: 269 g
Eingang: DC 5V / 1.5A
Ausgang: DC 5V / 2.4A (Kabel); DC 5V / 1A (wireless)
Ladezeit: 8.5 Stunden
Ladezyklen: 1,000-mal
LED-Akkuanzeige: 6

Français

6 Indicateur d'état de la batterie LED

- 76%~100%
- 51%~75%
- 26%~50%
- 25%~0%

Vert (clignotant): rechargement sans fil (en charge)
Rouge (continu): sous tension

Contenu de l'emballage
- TX-P2 10,000mAh Wireless Charging Power Bank
- Câble de recharge Micro USB vers USB
- Manuel

Caractéristiques
Capacité: 10,000mAh / 3.7 V / 37 Wh
Dimension: 80 x 140 x 20 mm
Poids: 269 g
Entrée: DC 5V / 1.5A
Sortie: DC 5V / 2.4A (par câble); DC 5V / 1A (sans fil)
Temps de recharge: 8.5 heures
Cycles de recharge: 1,000 fois
Indication LED de batterie: 6

⚠ Avertissements :
- Ne faites pas tomber, ne démontrez pas et n'essayez pas de réparer le chargeur par vous-même.
- Évitez l'exposition à l'eau ou à l'humidité.
- N'exposez pas à une source de chaleur.
- Tenez hors de portée des enfants.
- N'utilisez pas en présence de gaz inflammable.

繁體中文

六個燈號對應狀態

- 76%~100%
- 51%~75%
- 26%~50%
- 25%~0%

綠燈(閃爍): 無線充電(充電中)
紅燈(恆亮): 電源開啟

包裝內容
- TX-P2 10,000mAh Wireless Charging Power Bank
- Micro USB 傳輸線
- 說明書

規格
容量: 10,000mAh / 3.7 V / 37 Wh
尺寸: 80 x 140 x 20 mm
重量: 269 g
輸入: DC 5V / 1.5A
輸出: DC 5V / 2.4A (有線); 5V / 1A (無線)
充電時間: 8.5 小時
電池壽命: 1,000 次
電量指示燈: 六個

⚠ 警告:
- 請勿任意的拆解、摔落或改造移動電源。
- 請勿將移動電源暴露於潮濕的環境。
- 請遠離火源和高溫環境。
- 請放置在兒童拿不到的地方。
- 請勿在可燃性氣體的環境下使用。
根據交通部 低功率管理辦法 規定:
第十二條 經型式認證合格之低功率射頻電機，非經許可，公司、商號或使用者均不得擅自變更頻率、加大功率或變更原設計之特性及功能。
第十四條 低功率射頻電機之使用不得影響飛航安全及干擾合法通信；經發現有干擾現象時，應立即停用，並改善至無干擾時方得繼續使用。
前項合法通信，指依電信法規定作業之無線電通信。低功率射頻電機須忍受合法通信或工業、科學及醫療用電波輻射性電機設備之干擾。

日本語

6色のライトで使用状態を表します

- 76%~100%
- 51%~75%
- 26%~50%
- 25%~0%

緑(点滅):ワイヤレス充電(充電中)
赤(点灯):電源オン

パッケージの内容
- TX-P2 10,000mAh Wireless Charging Power Bank
- マイクロ USB - USB 充電ケーブル
- マニュアル

仕様
容量: 10,000mAh / 3.7 V / 37 Wh
寸法: 80 x 140 x 20 mm
重量: 269 g
入力: DC 5V / 1.5A
出力: DC 5V / 2.4A (USB経由); DC 5V / 1A (ワイヤレス)
充電時間: 8.5 時間
サイクル充電: 1,000 回
LED バッテリー表示: 6

⚠ ご注意:
- 充電器を落下、分解したり、自分で修理しないでください。
- 水または高温湿度への露出を避けてください。
- 熱源にさらさないでください。
- お子様の手が届かないところに置いてください。
- 可燃性ガスの等の近くでは使用しないでください。

Русский

6 Светодиодный индикатор состояния батареи

- 76%~100%
- 51%~75%
- 26%~50%
- 25%~0%

Зеленый (мигает): беспроводная зарядка (заряжается)
Красный (горит): питание включено

Пакет содержит
- TX-P2 10,000mAh Wireless Charging Power Bank
- Зарядный кабель микро-USB на USB
- Руководство

Технические характеристики
Емкость: 10,000mAh / 3.7 V / 37 Wh
Размеры: 80 x 140 x 20 mm
Вес: 269 g
Вход: DC 5V / 1A
Выход: DC 5V / 2.4A (проводной); DC 5V / 1A (беспроводной)
Время зарядки: 8.5 часов
Число циклов зарядки: 1,000 раз
Светодиодная индикация батареи: 6

⚠ Внимание!
- Не роняйте, не разбирайте и не пытайтесь отремонтировать зарядное устройство самостоятельно.
- Избегайте воздействия воды или высокой влажности.
- Не подвергайте воздействию любого источника тепла.
- Держите подальше от детей.
- Не используйте при наличии огнеопасного газа.

Español

Indicador de estado de la batería de 6 LED

- 76%~100%
- 51%~75%
- 26%~50%
- 25%~0%

Verde (parpadeando): carga inalámbrica (cargando)
Rojo (fijo): encendido

Contenido del paquete
- TX-P2 10,000mAh Wireless Charging Power Bank
- Cable de carga Micro USB a USB
- Manual del usuario

Especificaciones
Capacidad: 10,000mAh / 3.7 V / 37 Wh
Dimensiones: 80 x 140 x 20 mm
Peso: 269 g
Entrada: DC 5V / 1.5A
Salida: DC 5V / 2.4A (atado con alambre); DC 5V / 1A (inalámbrico)
Charging time: 8.5 hours
Charging cycles: 1,000 times
LED battery indicator: 6

⚠ Advertencias:
- No deje caer, abra ni intente reparar usted mismo el cargador.
- Evite la exposición al agua o la humedad excesiva.
- No lo exponga a ninguna fuente de calor.
- Manténgalo fuera del alcance de los niños.
- No lo utilice en presencia de gases inflamables.

العربية

مؤشر حالة البطارية المزود بستة مصابيح LED

- 76%~100%
- 51%~75%
- 26%~50%
- 25%~0%

أخضر (وميض): الشحن اللاسلكي (شحن)
أحمر (ثابت): تشغيل

محتويات العبوة
TX-P2 10,000mAh Wireless Charging Power Bank
كابل شحن من منفذ USBمخضر إلى منفذ USBالمستخدم

المواصفات
السعة: 10,000 ميلي أمبير في الساعة
3.7/ فولت 37/ وات في الساعة
الأبعاد: 80 x 140 x 20 مم
الوزن: 269 جم
الدخل: 5 فولت 1.5 أمبير
المخرجات: تيار مستمر 5 فولت 2.4 أمبير (سلكي); تيار مستمر 5 فولت 1 أمبير (لاسلكي)
وقت الشحن: 8.5 ساعة
دورات الشحن: 1,000مرة
مؤشر حالة البطارية بمصابيح LED: 6

⚠ تحذيرات:
لا تسقط السطح أو تفككه أو تحاول إصلاحه بنفسك
يجب تجنب تعرض الماء أو الرطوبة العالية.
لا تعرضه لأي مصدر حرارة
حافظ بعيداً عن متناول الأطفال
لا تستخدمه في وجود غاز قابل للاشتعال.

Português

6 LEDs indicadores de status da bateria

- 76%~100%
- 51%~75%
- 26%~50%
- 25%~0%

Verde (pisicante): Carregando wireless (carregando)
Vermelho (constante): Ligado

Conteúdo do pacote
- TX-P2 10,000mAh Wireless Charging Power Bank
- Cabo de carga Micro USB para USB
- Manual do Usuário

Especificações
Capacidade: 10,000mAh / 3.7 V / 37 Wh
Dimensões: 80 x 140 x 20 mm
Peso: 269 g
Entrada: 5VCC / 1,5A
Saída: 5VCC / 2,4A (com fio); 5VCC / 1A (sem fio)
Tempo de carga: 8.5 horas
Ciclos de carga: 1.000 vezes
LEDs indicadores de status da bateria: 6

⚠ Avisos:
- Não deixe cair, desmontar ou tentar reparar o carregador por conta própria
- Evite exposição à água ou alta umidade
- Não exponha a nenhuma fonte de calor
- Mantenha longe de crianças
- Não utilize na presença de gases inflamáveis

العربية

For a Class B digital device or peripheral, the instructions furnished the user shall include the following or similar statement, placed in a prominent location in the text of the manual:
NOTE: This equipment has been tested and found to comply with the limits for a Class B digital device, pursuant to Part 15 of the FCC Rules. These limits are designed to provide reasonable protection against harmful interference in a residential installation. This equipment generates, uses and can radiate radio frequency energy and, if not installed and used in accordance with the instructions, may cause harmful interference to radio communications.
However, there is no guarantee that interference will not occur in a particular installation.
If this equipment does cause harmful interference to radio or television reception, which can be determined by turning the equipment off and on, the user is encouraged to try to correct the interference by one or more of the following measures:
-- Reorient or relocate the receiving antenna.
-- Increase the separation between the equipment and receiver.
-- Connect the equipment into an outlet on a circuit different from that to which the receiver is connected.
-- Consult the dealer or an experienced radio/TV technician for help
This device complies with Part 15 of the FCC rules. Operation is subject to the following two conditions: 1) this device may not cause harmful interference, and 2) this device must accept any interference received, including interference that may cause undesired operation.
Changes or modifications not expressly approved by the party responsible for compliance could void your authority to operate the equipment.