

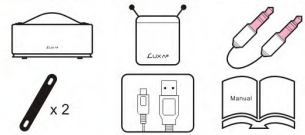
# Groovy

Bluetooth Stereo Speaker

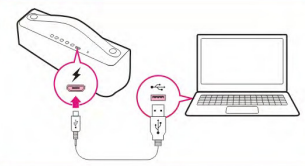
QUICK START GUIDE

FCC ID: 2AALC-ADSPKALV510

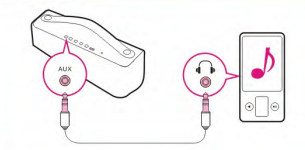
## Package Contents



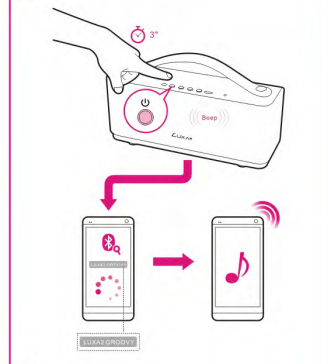
## Charging



## AUX In



## Bluetooth Pairing



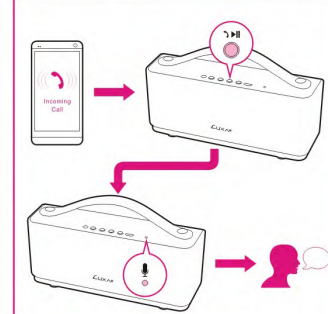
## Refresh



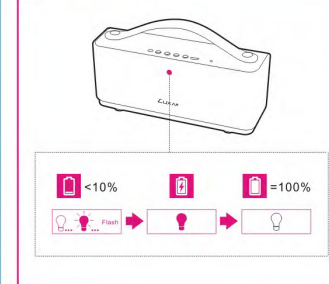
## Volume



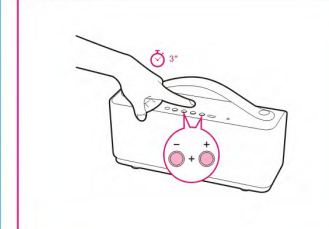
## Speakerphone



## Battery Indicator



## Reset



### General Features:

- Support A2DP and AVRCP Function (Audio Sink only, Remote Control only)
- Built-in Mic
- Playing Time: 3.5 hours at max. volume.
- Support AUX In Function
- Support Bluetooth Function.
- Brushed Aluminum Alloy
- Leather Handles

### Technical Specification:

- Bluetooth Module CSR BC5 (V2.1+EDR)
- Receive Sensitivity: better than -80dBm
- Wireless Range: in 10meters (open area)
- Audio SNR: Equal or > 80dB (Bluetooth Module)
- Power Source: Built In Rechargeable Battery Lithium 1800mAh / 3.7V
- Playing Time : 3.5 hours at max. volume.
- Charging Time : 3.5 hours
- Audio Output Power: 2.5W+2.5W(RMS), 3W+3W (Max.)
- Audio Frequency Responses: 100Hz to 20KHz
- Dimension: 186 x 54 x 76mm
- Weight: 328g
- Operating Temperature: 0 to 40°C

#### Warnings:

- Don't drop, disassemble or attempt to repair the speaker by yourself.
- Avoid exposure to water or high humidity.
- Don't expose to any heat source

This device complies with part 15 of the FCC rules. Operation is subject to the following two conditions:

(1) this device may not cause harmful interference, and

(2) this device must accept any interference received, including interference that may cause undesired operation.

Changes or modifications to this unit not expressly approved by the party responsible for compliance could void the user's authority to operate the equipment.