

Acknowledgement

Customer name: SHENZHEN ECARE ELECTRONICS CO., LTD

Product name: built-in antenna

Specification and model: 2.4 G 3dBi RF1.13 Black wire L=64mm
+IPEX

Customer material number: C.1 .2 6 0 2 3 0 1

Our Material No. : T J 0 6 8-N 0 4 0 0 0 3-0 1

Address: No.12, Zhuangyuan Bi Street, Mengang Village,
Dalingshan Town, Dongguan City

Sample delivery date: February 1 9, 2 0 2 3

Tel. :0769-81600637 Fax:0769-81600673

Email:tianji@dgtianji.com.cn

	MANUFACTURE SIGNATURE	CUSTOMER SIGNATURE
CHECKED BAY:	Wu j uan	
AUDITOR BAY:	/	
APPROVED BAY	JBM	
DATE:	2023-2-19	

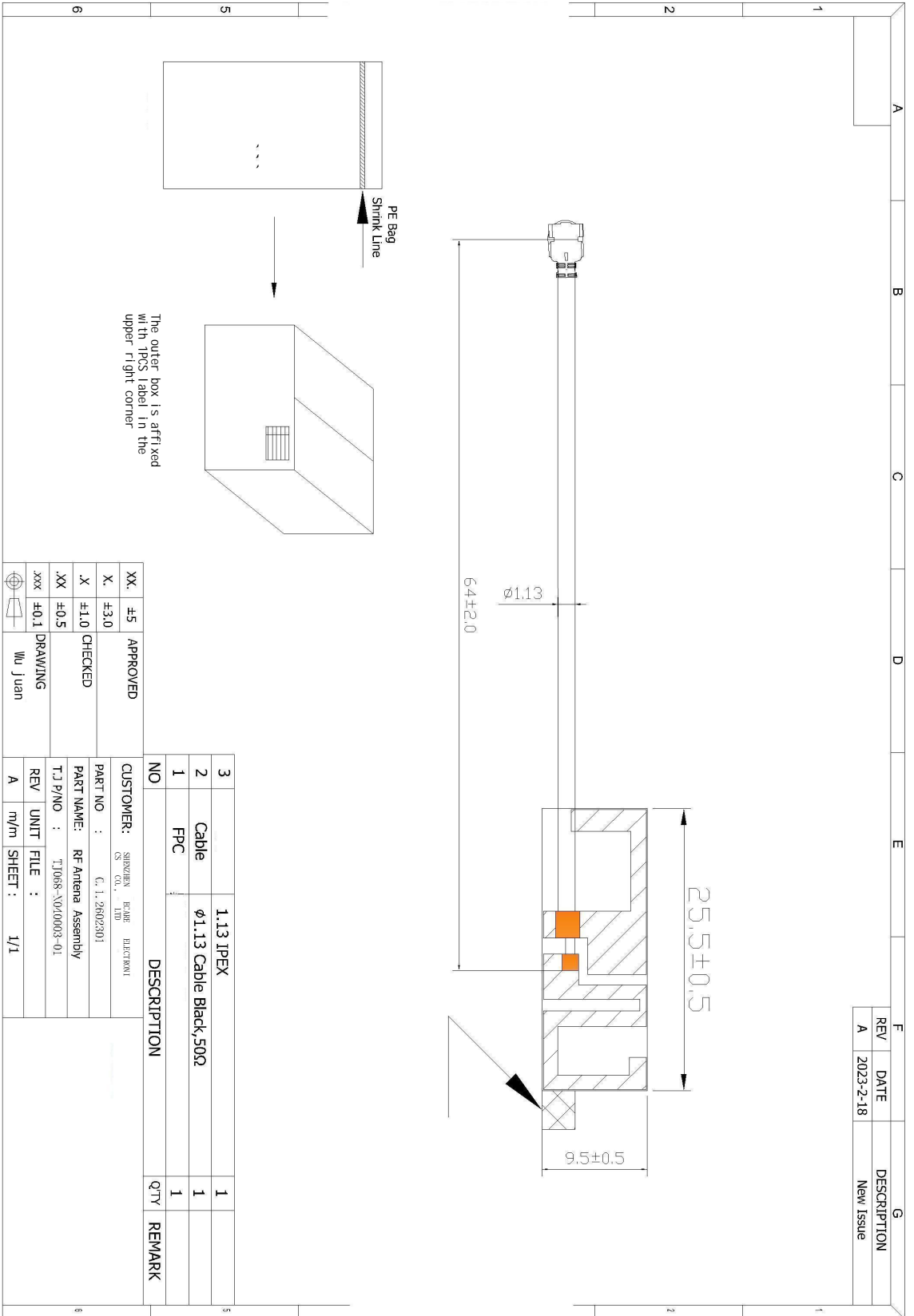


I. Specification Table:

Main technical specifications	
Frequency Range (MHz)	2400-2500MHz
Impedance(Ω)	50 \pm 5
Peak Gain(dBi)	3 dBi
VSWR	Max 2.0
Admitted Power	2W
Polarization	Linear Vertical
Radiation	Omni-directional
Connector Type	IPEX
Physical Properties	
Antenna cable	1.13 Black Cable
Operating Temp	-40 $^{\circ}$ C ~+70 $^{\circ}$ C
Storage Temp	-40 $^{\circ}$ C ~+70 $^{\circ}$ C



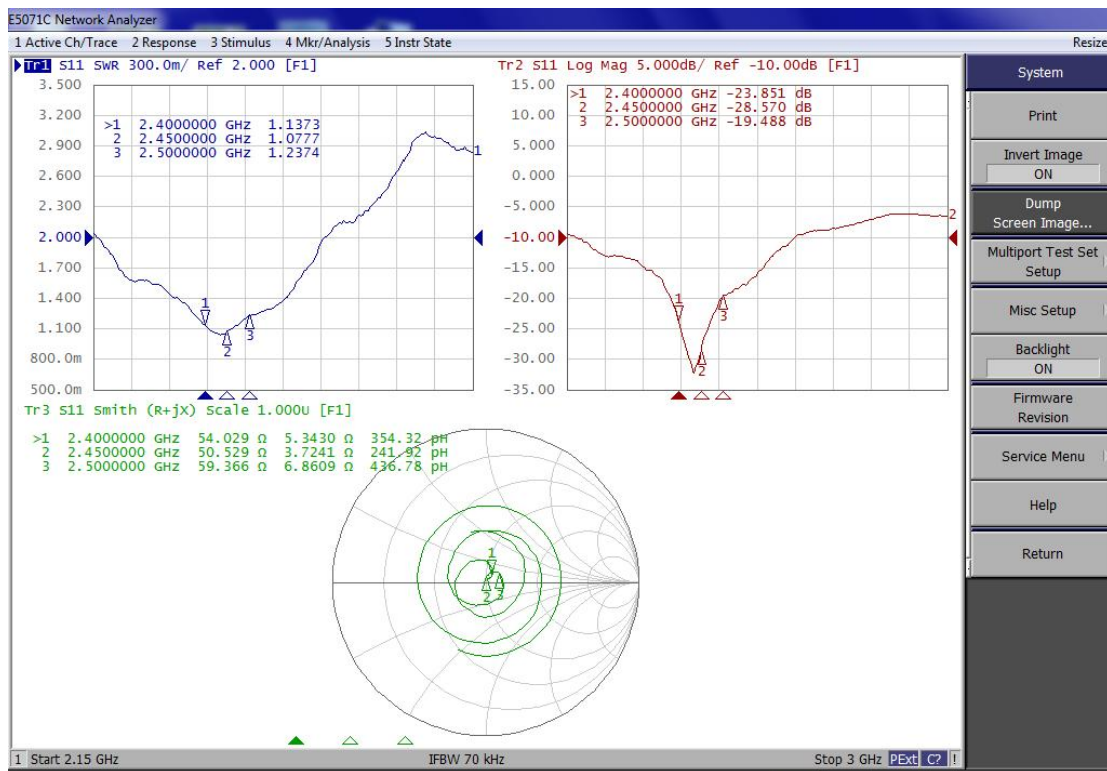
11



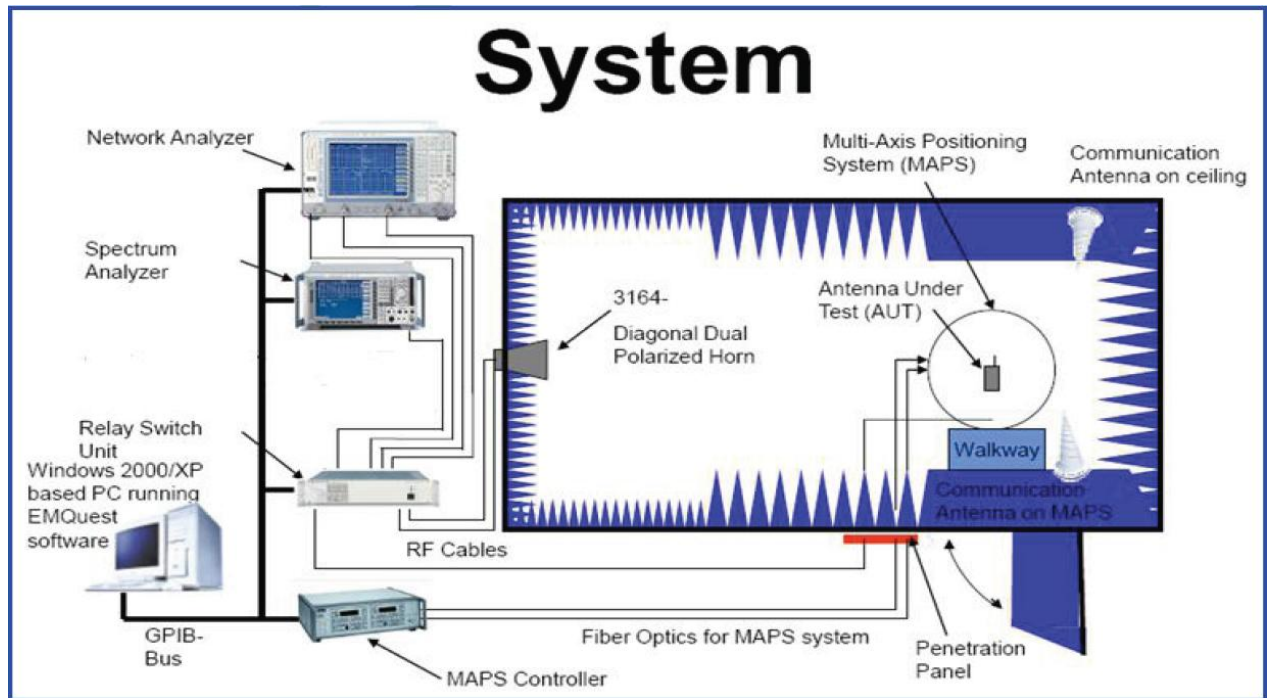
三、Product Characteristics



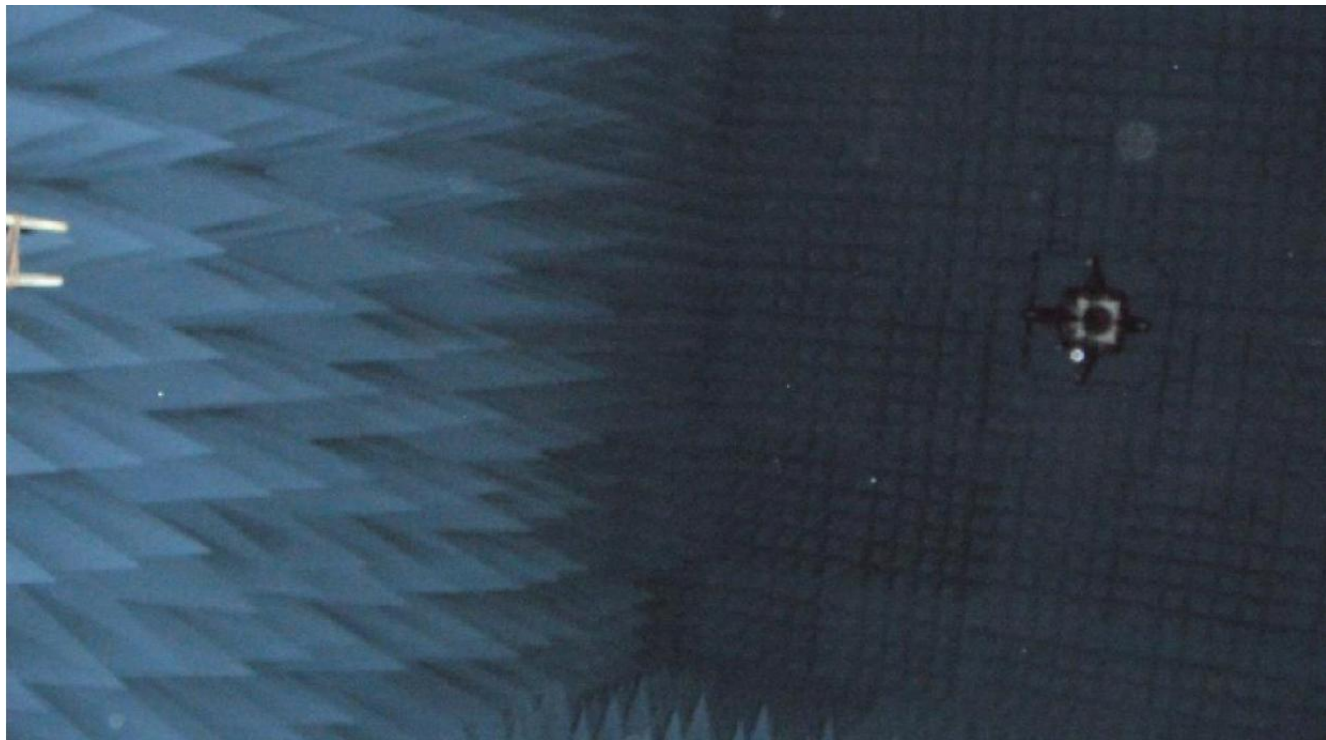
2.4GHz VSWR Return Loss



Dark room test principle block diagram:



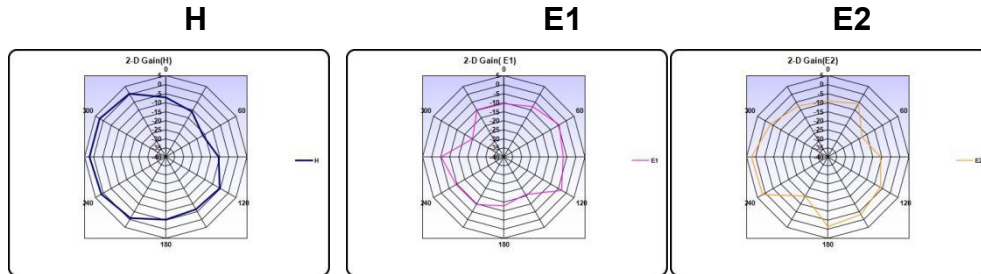
Picture of the dark room:



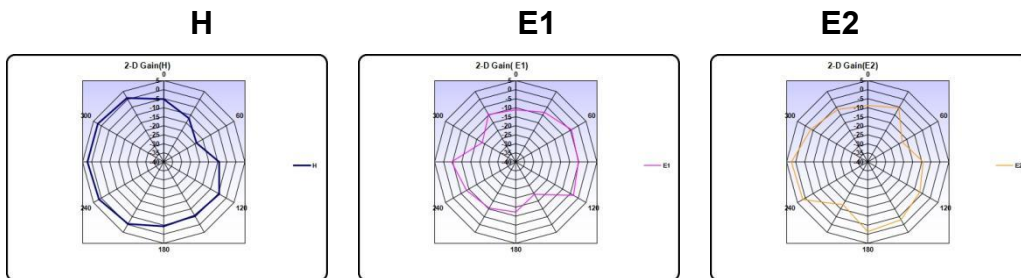
2D、3D Radiation Pattern

Radiation Pattern

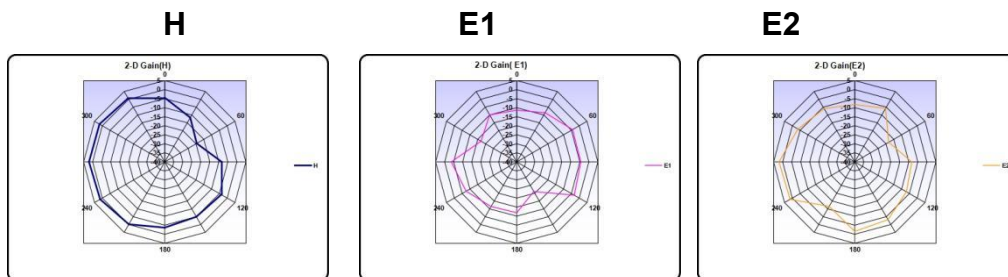
2.4GHz



2.45GHz



2.5GHz



Summary
VSWR

	Antenna 1
2400MHz	1.13
2450MHz	1.07
2500MHz	1.23

3D Peak Gain & Efficiency

Frequency	Antel 2.4GHz	
	Peak Gain (dBi)	Efficiency (%)
2400	2.21	63.78
2450	2.36	66.42
2500	3.00	64.55