



User Manual

Training Collar System

www.ipets-mall.com

Table of Contents:

Important Safety Information.....	2
Components.....	3
How the dog training system works?.....	4
Features.....	4
Key Definitions.....	5
Remote Transmitter.....	5
Collar Receiver.....	6
Operating Guide.....	6
Step 1 - Prepare the Remote Transmitter and Receiver Collar.....	6
Step 2 – Pairing Collar Receiver to Transmitter.....	7
Step 3 - Test the Training System Functions.....	8
Step 4 – Assemble and Fit the Collar Receiver.....	10
Step 5 Re-thread the collar (as diagram).....	11
Frequently Asked Questions.....	12
Troubleshooting.....	13
General Training Tips.....	14
LIMITED 90 DAYS WARRANTY.....	15
iPets CUSTOMER SERVICE.....	15

Important Safety Information

WARNING: NOT FOR AGGRESSIVE DOGS. Do not use this product if your dog is aggressive, or if your dog is prone to aggressive behavior. Aggressive dogs can cause severe injury and even death to their owner and others. If you are unsure whether this product is appropriate for your dog, please consult your veterinarian or certified trainer.

CAUTION:

Risk of skin damage: Please read and follow the instructions carefully in this guide. Proper fit of the collars is important because a loose collar may cause inconsistent performance. A collar worn for too long or made too tight on the pet's neck may cause skin damage, ranging from redness to pressure ulcers (commonly known as bedsores). These collars can cause pressure necrosis if used incorrectly and is often misidentified as burns.

- Avoid leaving the collar on the dog for more than 12 hours per day.
- When possible reposition the collar on the pet's neck every 1 to 2 hours.
- Check the fit to prevent excessive pressure, and it is okay to trim any excess strap length.
- Never connect a lead to the electronic collar because it may cause excessive pressure on the contacts.
- Wash the dog's neck area and contacts of the collar weekly with a damp cloth. Examine the contact area daily for signs of a rash or a sore.
- If a rash or sore is found, discontinue use of the collar until the skin has healed.
- If the condition persists beyond 48 hours, see your veterinarian.

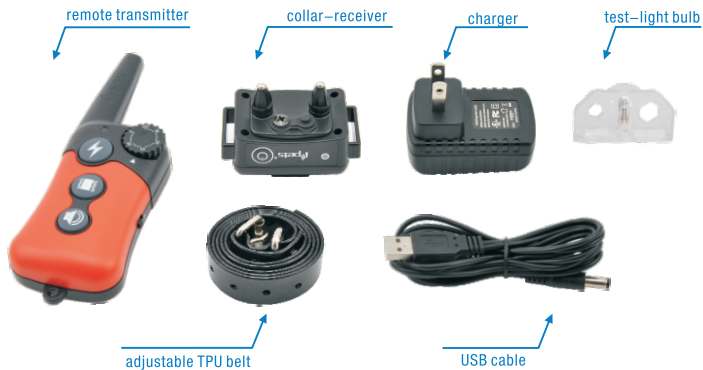
These steps will help your pet safe and comfortable. Millions of pets are comfortable while wearing stainless steel contacts. Some pets are sensitive to contact pressure. You may find after some time that your pet is very tolerant of the collar. If so you may relax some of these precautions. It is important to continue daily checks of the contact area. If redness or sores are detected, discontinue use until the skin has fully healed.

Thank you for choosing the iPets brand! You and your pet deserve a companionship that includes memorable moments and a shared understanding together. Our mission is to ensure your pet's safety by providing you the tools and techniques to successfully train your pet. Should you have any queries, please contact our customer service.

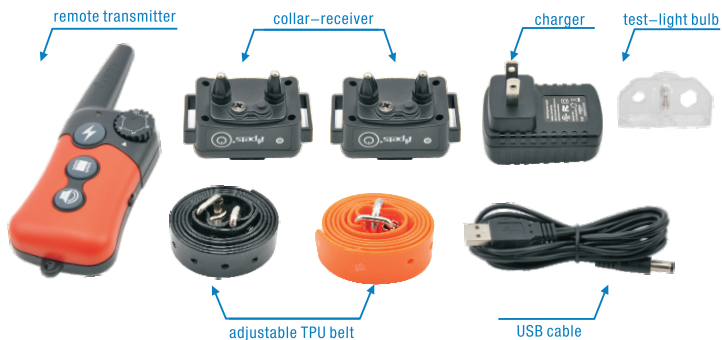
NOTE: Please charge before using the product.

Components:

PET619-1(1 for 1)



PET619-2(1 for 2)



How the dog training system works?

iPets products are reliable, effective, and comfortable for large or small dogs. The system assists in controlling your dog without a leash in a range up to 330 yards away! Instantly send a signal from the Remote Transmitter, which activates your dog's Collar Receiver. The dog will receive an annoying but safe, harmless stimulation. With correct, consistent use of this product, the dog will associate his misbehavior with your corrections, and soon enough, you will have a well-trained dog. This particular model features adjustable levels of stimulation, enabling the user to tweak accordingly to the dog's temperament, removing the risk of over stimulation.

Features

- Rechargeable Remote Transmitter and Collar Receiver.
- Waterproof Remote Transmitter and Collar Receiver.
- 100 intensity levels of Vibration.
- 100 intensity levels of Static Shock.
- Standard Tone.
- Easy to use, adjustable Intensity Dial.
- Simple, ergonomic design layout.
- Quick and straightforward pairing process.
- Range of 330 Yards.
- Capable of simultaneous control of two dogs (extra receiver is purchasable).
- Adjustable TPU strap to accommodate any size of dog.
- Auto-off feature to conserves power when not in use to extend battery life.
- Remotely turn on/off Collar Receiver.

Key Definitions



Remote Transmitter

1. **Antenna:** Transmits signal from Remote Transmitter to the Collar Receiver.
2. **Transmitter Indicator Light:** Flashes green when any of the stimulation buttons are pressed. Will blink red if battery power is low to indicate the transmitter needs recharging.
3. **Intensity Dial:** Rotate the dial to adjust the level of vibration or static shock stimulation from 0 to 100.
4. **Toggle Switch (Dog Selection):** Switches control between Collar Receiver 1 or Collar Receiver 2 (Dog 1 or Dog 2).
5. **Vibration Button:** Delivers vibration to a Collar Receiver, depending on the position of the Toggle Switch.
6. **Stimulation Button:** Delivers electronic pulse stimulation to a Collar Receiver, depending on the position of the Toggle Switch.
7. **Sound Button:** Delivers a sound to a Collar Receiver, depending on the position of the Toggle Switch.
8. **Charging Port:** Charges the battery of the Remote Transmitter when connected to a power source.

Collar Receiver



1. **ON/OFF Button:** Powers on/off the Collar Receiver and used for Pairing or Synchronization of the Collar Receiver to the Remote Transmitter.
2. **Electrodes:** Contact points cover the electrodes, and through them electronic pulse stimulation is delivered.
3. **Charging Port:** Charges the battery of the Collar Receiver when connected to a power source.
4. **Indicating Light:** Flashes green when any of the stimulations are pressed. Will blink red if the battery power is low to indicate the Collar Receiver needs recharging.

Operating Guide

Step
1

Step 1 - Prepare the Remote Transmitter and Receiver Collar: Charge the Remote Transmitter and Receiver Collar

1. Uncover the Charging Port by lifting the rubber cover.
2. Insert the charging connector into the Charging Port.
3. Plug the charger into a standard wall outlet.
4. A solid red light will appear on the Indicator Light, indicating charging is occurring.
5. Once charging is complete, the solid red light will turn to a solid green light.
6. Remove the charging connector, and replace the rubber cover to protect the Charging Port.



Note: Before first use, charge the Remote Transmitter and Receiver Collar until completion.

Powering on and off the Remote Transmitter

There is no need to turn off the transmitter. When there is no buttons being pressed on transmitter, the unit turns off automatically. Press any button and the transmitter will power back on automatically.

Powering on and off the Collar Receiver

There are two ways to power on and off the Remote Collar Receiver:

Option 1:

Press the ON/OFF button on the receiver to power the unit on or off. When the receiver is powered on, the indicating light will flash green.

Option 2:

Press and hold the Vibration and Sound Button at the same time for a few seconds to turn on or off the receiver. Please note, this feature can only be utilized if the distance between the transmitter and receiver is less than 100 feet or 30 meters and the transmitter and receiver must already be paired.

Step 2 – Pairing Collar Receiver to Transmitter

Note: Transmitter and receiver are pre-paired when leaving our manufacturing facility. In case the pairing is not established or you would like to repair the units, please follow the instructions below:

1. Power on the Collar Receiver by pressing the ON/OFF button on the Collar Receiver.
2. Press and hold the ON/OFF button for about 3 seconds until a beep sounds, and the indicating light will begin flash quickly.

3. Press any button on the transmitter once the Collar Receiver beeps. When the Remote Transmitter and Collar Receiver are paired successfully the indicating will stop flashing quickly.
4. If needing to pair a second Collar Receiver, follow the same steps but first push your Toggle Switch in the other direction.

Step 3 - Test the Training System Functions

3

The testing methods will help determine whether the training system is functioning as intended and will also teach you how to operate the system. Please ensure that the pairing process is complete before attempting to test the functionality.

Testing the Electronic Pulse Stimulation

Electronic Pulse Stimulation Tester

In your package that you received, you will find a clear almost translucent plastic piece that has a light bulb/fuse in the middle of it. This is your Electronic Pulse Stimulation tester. This component DOES NOT attach to the Collar Receiver by any means and is only for testing the static shock mode. To test the Electronic Pulse Stimulation, follow these steps:

1. Put the test light over the Electrodes of the Collar Receiver you wish to test.
2. Ensure the Toggle Switch is in the correct position for the Collar Receiver you're testing.
3. Adjust the Intensity Dial off of 100.
4. Press the Static Shock Button on your Remote Transmitter.
5. If done correctly, the test bulb should flash orange indicating the electronic pulse stimulation is operating correctly.



(Figure 3-1)

Note: If wanting to test the shock function on yourself, please ensure your finger or hand is across both contact points to ensure the connection is complete. Otherwise, user will feel no stimulation.

Testing the Vibration Functions

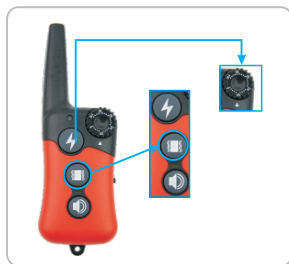
1. Ensure the Toggle Switch is in the correct position for the Collar Receiver you're testing.
2. Adjust the Intensity Dial off of 100.
3. Press the Vibration Button on your Remote Transmitter.
4. If done correctly, the Collar Receiver will vibrate.



(Figure 3-2)

Testing the Sound Functions

1. Ensure the Toggle Switch is in the correction for the Collar Receiver you're testing. Press the Sound Button on your Remote Transmitter.
2. If done correctly, the Collar Receiver will emit sound.



(Figure 3-3)

Step 4 – Assemble and Fit the Collar Receiver

4

Attaching the Contact Points

In your package that you received, you will find 3 sets of different sized contact points. These contact points are meant to be screwed onto the collar receiver by hand. The reason for 3 different sizes of contact points is because you want to use the most appropriate size according to your dogs hair/fur length. So if your dog has short hair/fur then you would want to use the smallest sized contact points. If your dog has medium hair/fur then you would want to use the medium sized ones, and if your dog has long hair/fur, then you would want to use the largest sized contact points. These contact points are screwed onto the receiver so that the points can effectively contact the dogs skin without hair/fur interfering with the connection.

Attaching the Collar Strap to the Collar Receiver

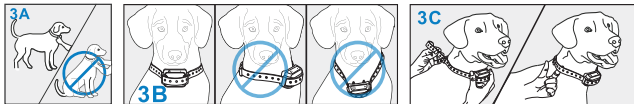
The Collar Receiver attaches to the Collar Strap by sliding through the tabs on each side and going wrapping around the back of the Collar Receiver. To accomplish this correctly, please view the diagram below:

(Include diagram/picture of the collar strap attaches to the collar receiver.)
Make sure it's the collar receiver for the model mentioned.

Fitting the Collar Receiver

Important: The proper fit and placement of the Collar Receiver is essential for effective training. The electrodes must have direct contact with the dog's skin.

- (1) To fit the Collar Receiver, attach the Collar Strap to the Receiver.
- (2) With the dog standing in front of you, place the Collar Receiver around the dog's neck, so the receiver box and Contact Points are on the underside of your dog's neck, making direct contact with the dog's skin. If direct contact is not possible, shaving some fur away, to ensure good contact is recommended.
- (3) Fasten the collar strap. The fit should be snug, but not taut. A finger should be able to be placed beneath the collar strap when around the dog's neck.
- (4) Allow the dog to wear the Collar Receiver for several minutes and check the strap again. The dog will soon become more familiar with the Collar Receiver, so it is crucial to ensure the fit comfortable and flattering.



CAUTION: RISK OF SKIN DAMAGE

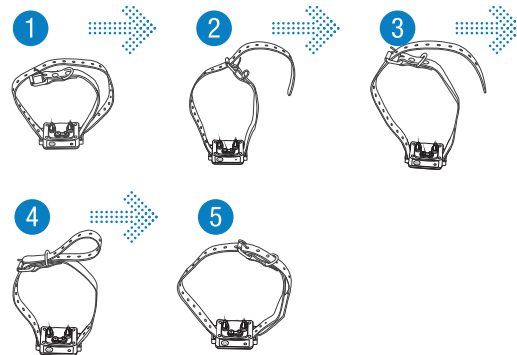
- For comfort, safety and effectiveness of this product please check the fit of the dog's collar frequently. If observing any skin irritation, immediately discontinue use of the collar for a few days. If the skin condition persists beyond 48 hours, consult a veterinarian. These collars can cause pressure necrosis, commonly known as bed sores, if used incorrectly and is often misidentified as burns.
- Do not attach a leash to the collar, which can result in squeezing the Contact Points too tightly against your dog's neck.
- The design of the Collar Receiver discourages constantly wearing the device. iPets recommends the collar not be worn for more than 12 hours out of every 24-hour period.
- Most dogs feel uncomfortable when wearing the collar for the very first time. Do not use any functions until the dog is accustomed to the collar.
- iPets suggests giving the dog, the vibration stimulation before following it with a static shock. After training for a while using this method, the dog will be aware that after vibration comes a static shock. Vibration will act as a warning, and static shock only acts as a menace that might be necessary sometimes.

Step 5 Re-thread the collar (as diagram)

5

Regular Maintenance

- Ensure Contact Points are not too tight on a weekly basis.
- Rinse the Contact Points with alcohol on a weekly basis.
- Check the dog's neck for irritation and wash the dog's neck on a weekly basis.
- Feel free to cut any additional Collar Strap material if it's too long for your dog.



Frequently Asked Questions:

How old does the dog have to be before using the system?

Your dog should have learned basic obedience commands such as, "sit" or "stay." The Collar Receiver might be too large for dogs under 15lbs.

Once my dog completes training and is been obeying my commands, will he have to wear the collar?

Probably not, but you may try to reinforce training with the collar.

Can I use the iPets rechargeable training collar with more than one dog?

Yes, you just need to purchase another Collar Receiver for the system.

Is the Collar Receiver waterproof?

Yes, but always ensure that the Rubber Cover seals the Charging Port.

Can I replace the Collar receiver with another kind of collar?

No.

Can I attach a leash to the Collar Receiver?

No, this can result in pulling the Contact Points too tightly against the dog's neck. Attach a leash to a separate, nonmetallic collar or a harness. Ensure the extra collar does not put pressure on the Contact Points.

How long can I leave the Collar Receiver on my dog?

The design of the collar discourages constant wearing. We recommend not having the dog wear the collar for more than 12 hours out of every 24-hour period.

Is the training system suitable for all dogs?

The collar is adjustable from length 5.9" (15cm) to 19.6" (50cm), if the dog's neck circumference is smaller than 5.9", you will be forced to rethread the collar, if the dog's neck circumference is larger than 22", this collar may not be suitable for the dog. This collar is not suitable for dogs under 15lbs.

Troubleshooting

My dog is not responding after successfully setting up the training system.

- Charge the Remote Transmitter and Collar Receiver for 6 hours, separately before first use.
- Ensure the Remote Transmitter and Collar Receiver are powered on.
- Check the intensity levels of vibration and static shock, making sure it is not set to 0.
- Ensure the Collar Receiver has sufficient power to operate.
- Check the collar to ensure it fits snugly against your dog's neck.
- If tested for all of the above and the dog is still not responding, please try repairing the Remote Transmitter and Receiver Collar.

The Remote Transmitter does not work.

- Check the battery status of the Remote Transmitter.
- If the battery is low, please recharge the Remote Transmitter

My collar-receiver works great for some time, yet it does not work after charging.

- First, check if the receiver has been charged correctly. Check the "prepare the collar receiver" part of the guide for the correct charging method.
- Check if the receiver has been powered on.

I want to test the Collar Receiver on myself, but it does not work.

- When testing the Collar Receiver with your hands, please touch the two electrodes simultaneously, as touching one electrode will not work.

General Training Tips:

Follow these tips on how to get the best out of your iPets Training Collar.

- (1) Make training sessions short and positive (between 10-15 minutes long for each session.) This will enable the dog to keep its attention focused on the trainer.
- (2) Train one dog at a time.
- (3) During the first initial training sessions, keep the dog in a familiar outdoor environment. Training in new locations may cause the dog to become distracted, causing you to reinforce commands with the Collar Receiver more than necessary.
- (4) Use a long leash fastened to a non-metallic collar to help the dog's learning. Ensure the additional collar and leash does not interfere with the Contact Points on the Collar Receiver. Do not use the remote training collar without a long leash until your dog is fully trained.
- (5) More success will occur by teaching the dog a command first before trying to reinforce the command with the Remote Transmitter.
- (6) For basic obedience training, vibration is more useful.
- (7) Issue one obedience command at a time, this will reduce confusion and allow the dog to remain focused. Do not use the training system for commands that the dog has not learned.
- (8) During training, look for all the positive changes in the dog's behavior and remember to reinforce them promptly with ample praise and reward.
- (9) Avoid over-correcting your dog. Use as little remote correction as possible during the training process.
- (10) When the dog has become apparently perplexed, shift the focus of the training by drawing the dog's attention to a command they have familiarity. Example: Tell the dog to sit and give abundant praise and encouragement on successful completion of the sit command.
- (11) Do not use the training system to correct or eliminate forms of aggression or biting behavior. When the dog is showing signs of aggressive behavior, immediately contact a professional dog trainer in your local area.
- (12) Please keep in mind, that you should keep training sessions short and end every session on a high note. Stop training and play with the dog as soon the dog has accomplished a new level of proficiency.

If needing more training tips, please visit us at www.ipets-mall.com or www.facebook.com/ipetsmall for plenty of resources.

Common size of different dogs

Size	Neck (cm)	Chest Measurement (cm)	Back Length (cm)	Type
Mini	20-22	25-30	19	Chihuahua, Yorkshire Terrier
Small	20-24	29-36	23	Chihuahua, Yorkshire Terrier, Poodle, Pomeranian
Medium	23-28	35-42	28	Maltese Dog, Shih Tzu
Large	27-31	41-47	31	Miniature Schnauzer, Pekingese
large	30-34	46-53	35	Schnauzer, English Cocker Spaniel
Large	33-37	52-59	40	Beagle
Huge	43-48	76-84	60	Husky
	47-52	88-97	65	Labrad or Retriever
	52-62	92-110	70	Golden Retriever, Old English Sheepdog

LIMITED 90 DAYS WARRANTY

iPets warrants this product to be free of defects in parts, materials and workmanship for a period of 90 days, from date of purchase.

Should any repairs or servicing under this warranty be required, contact Customer Service by phone or email for instructions on how to pack and ship the product to iPets.

This warranty gives you specific legal rights and you may also have other rights which vary from state to state.

iPets CUSTOMER SERVICE

Email: service@ipets-mall.com

Telephone: 1-866-877-7949 (USA & Canada only)

Hours: Weekdays 9:00 AM- 6:00 PM EST

FCC Statement:

This equipment has been tested and found to comply with the limits for a Class B digital device, pursuant to part 15 of the FCC Rules. These limits are designed to provide reasonable protection against harmful interference in a residential installation. This equipment generates, uses and can radiate radio frequency energy and, if not installed and used in accordance with the instructions, may cause harmful interference to radio communications.

However, there is no guarantee that interference will not occur in a particular installation. If this equipment does cause harmful interference to radio or television reception, which can be determined by turning the equipment off and on, the user is encouraged to try to correct the interference by one or more of the following measures:

- Reorient or relocate the receiving antenna.
- Increase the separation between the equipment and receiver.
- Connect the equipment to an outlet on a circuit different from that to which the receiver is connected.

This device complies with part 15 of the FCC rules. Operation is subject to the following two conditions: (1) This device may not cause harmful interference, and (2) this device must accept any interference received, including interference that may cause undesired operation.

Note: Modifications to this product will void the user's authority to operate this equipment.