

PetAiner®

General Training Tips

Training Manual

User Manual

Training Collar System

www.ipets-mall.com

Table of Contents

Important Safety Information.....	2
Components.....	3
How the Dog Training System Works.....	4
Features.....	4
Key Definitions.....	5
Remote Transmitter.....	5
Collar Receiver.....	6
Operating Guide.....	7
Step1 Prepare the Remote Transmitter and Receiver Collar.....	7
Step2 Test the Training System Functions.....	8
Step3 Fit the collar-receiver.....	9
Step4 Re-thread the collar(as diagram).....	11
Frequently Asked Questions.....	12
Troubleshooting.....	13
FCC Notice.....	14
Common size of different dogs.....	15
LIMITED ONE-YEAR WARRANTY.....	15
PETRAINER CUSTOMER SERVICE.....	15

Important Safety Information

WARNING: NOT FOR AGGRESSIVE DOGS. Do not use this product if your dog is aggressive, or if your dog is prone to aggressive behavior, Aggressive dogs can cause severe injury and even death to their owner and others. If you are unsure whether this product is appropriate for your dog, please consult your veterinarian or certified trainer.

CAUTION:

Risk of skin damage: Please read and follow the instructions carefully in this guide, Proper fit of the collars is important because a loose collar may cause inconsistent performance. A collar worn for too long or made too tight on the pet's neck may cause skin damage, ranging from redness to pressure ulcers (commonly known as bedsores). These collars can cause pressure necrosis if used incorrectly and is often misidentified as burns.

- Avoid leaving the collar on the dog for more than 12hours per day.
- When possible reposition the collar on the pet's neck every 1 to 2hours.
- Check the fit to prevent excessive pressure, and it is okay to trim any excess strap length.
- Never connect a lead to the electronic collar because it may cause excessive pressure on the contacts.
- Wash the dog's neck area and contacts of the collar weekly with a damp cloth.
- Examine the contact area daily for signs of a rash or a sore.
- If a rash or sore is found, discontinue use of the collar until the skin has healed.
- If the condition persists beyond 48 hours, see your veterinarian.

These steps will help your pet safe and comfortable. Millions of pets are comfortable while wearing stainless steel contacts. Some pets are sensitive to contact pressure. You may find after some time that your pet is very tolerant of the collar. If so you may relax some of these precautions, It is important to continue daily checks of the contact area, If redness or sores are detected, discontinue use until the skin has fully healed.

Thank you for choosing the Pettrainer brand! You and your pet deserve a companionship that includes memorable moments and a shared understanding together. Our mission is to ensure your pet's safety by providing you the tools and techniques to successfully train your pet, Should you have any queries, please contact our customer service.

NOTE: Please charge before using the product.

Components

PET617A-1 (1 for1)



PET617A-2 (1 for2)



How the dog training system works?

Petrainer products are reliable, effective, and comfortable for large or small dogs. The system assists in controlling your dog without a leash in a range up to 330 yards away! Instantly send a signal from the Remote Transmitter, which activates your dog's Collar Receiver. The dog will receive an annoying but safe, harmless stimulation. With correct, consistent use of this product, the dog will associate his misbehavior with your corrections, and soon enough, you will have a well-trained dog. This particular model features adjustable levels of stimulation, enabling the user to tweak accordingly to the dog's temperament, removing the risk of over stimulation.

Features

- Rechargeable Remote Transmitter and Collar Receiver.
- Waterproof Remote Transmitter and Collar Receiver.
- LCD Display featuring a blue backlight for nighttime usage.
- 100 intensity levels of Vibration.
- 100 intensity levels of Static Shock.
- Easy to use, adjustable Intensity Dial.
- Simple, ergonomic design layout.
- Belt Clip.
- Quick and straightforward pairing process.
- Range of 330 Yards.
- Capable of simultaneous control of two dogs (extra receiver is purchasable).
- Adjustable TPU strap to accommodate any size of dog.
- Auto-off feature to conserves power when not in use to extend battery life.

Key Definitions



Remote Transmitter

- **Antenna:** Transmits signal from Remote Transmitter to the Collar Receiver.
- **LCD Screen:** Indicates the intensity level of stimulation currently selected and battery life.
- **Intensity Dial:** Rotate the dial to adjust the level of stimulation from 0 to 100.
- **Toggle Switch (Dog Selection):** Switches between Collar Receiver 1 or Collar Receiver 2 (Dog 1 or Dog 2).
- **Power Button:** Powers the Remote Transmitter on and off.

- **Vibration Button:** Delivers vibration to a Collar Receiver, depending on the Toggle Switch.
- **Tone Button:** Delivers a tone to a Collar Receiver, depending on the position of the Toggle Switch.
- **Static Button:** Delivers electronic pulse stimulation to a Collar Receiver, depending on the position of the Toggle Switch.
- **Vibration + Static Button:** Delivers vibration and static stimulation to a Collar Receiver, depending on the position of the Toggle Switch.
- **Charging Jack:** Charges the battery of the Remote Transmitter when connected to a power source.
- **Belt Clip:** Allows for the possibility of hands free training.
- **Rubber Cover:** Protects the internal components of the Remote Transmitter from dust and water. Always remember to replace after charging is complete.

Collar Receiver



- 1. Contact Points:** Contact points cover the metal screws, and through them vibration or static shock stimulation is delivered.
- 2. Charging Port:** Charges the battery of the Collar Receiver when connected to a power source.

3. Power Button: Powers the Collar Receiver on or off, and pair the Collar Receiver to Remote Transmitter.

4. Receiver Indicator Light:



(A) When the Collar Receiver is charging, the light will be a solid red; it switches to green when fully charged.

(B) In standby status, the Receiver Indicator Light will flash green periodically.

(C) Pairing the Remote Transmitter and Collar Receiver will produce a solid green light.

(D) Stimulation Buttons pressed on the Remote Transmitter will cause a green light to appear on the Collar Receiver.

Note, if the unit stops powering on or communicating with each other, please simply recharge the device, it will reset and begin to operate normally.

Operating Guide

Step 1 Prepare the Remote Transmitter and Receiver Collar:

1

Charge the Remote Transmitter and Receiver Collar

1. Uncover the Charging Jack by lifting the Rubber Cover.
2. Insert the charging connector into the Charging Jack.
3. Plug the charger into a standard wall outlet.
4. A solid red light will appear on the Indicator Light, indicating charging is occurring.

5. Once charging is complete, the solid red light will turn to a solid green light.

6. Replace the Rubber Cover to protect the Charging Jack.

Note: Before first use, charge the Remote Transmitter and Receiver Collar until completion.



Powering on and off the Remote Transmitter

Press the Power Button once, the LCD display will appear and the Transmitter Indicator Light will turn to solid green.

To power off the Remote Transmitter, press the Power Button once again.

Powering on and off the Collar Receiver

Press the Power Button on the receiver to power the unit on or off. When the receiver is powered on, the indicating light will flash green.

Step 2 Test the Training System Functions:

2

The testing methods will help determine whether the training system is functioning as intended. Please ensure that the pairing process is complete before attempting to test the functionality.

Testing the Static Shock Function

1. Put the test light over the Screws of the Collar Receiver.

2. Turn on the Remote Transmitter and adjust the Intensity Dial off 100.
3. Press the Static Shock Button on your Remote Transmitter.
4. If done correctly, the test bulb should flash orange indicating the electronic pulse stimulation is operating correctly.

Note: If wanting to test the shock function on yourself, please ensure your finger or hand is across both contact points to ensure the connection is complete. Otherwise, user will feel no stimulation.

Testing the Vibration Functions

1. Power on the Remote Transmitter, and adjust the Intensity Dial off 100.
2. Press the Vibration Button on your Remote Transmitter.
3. If done correctly, the Collar Receiver will vibrate.

Testing the Sound Functions

1. Ensure the Toggle Switch is in the correction for the Collar Receiver you're testing. Press the Sound Button on your Remote Transmitter.
2. If done correctly, the Collar Receiver will emit sound.

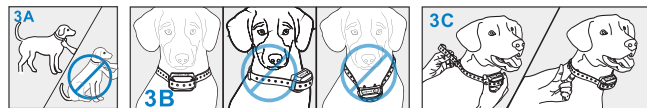
Step 3 Fit the Collar Receiver:

3

Important: The proper fit and placement of the Collar Receiver is essential for effective training. The contact points must have direct contact with the dog's skin.

- (1) To fit the Collar Receiver, attach the Collar Strap to the Receiver.
- (2) With the dog standing in front of you, place the Collar Receiver around the dog's neck, so the receiver box and Contact Points are on the underside of your dog's neck, making direct contact with the dog's skin. If direct contact is not possible, shaving some fur away, to ensure good contact is recommended.
- (3) Fasten the collar strap. The fit should be snug, but not taut. A finger should be able to be placed beneath the collar strap when around the dog's neck.

- (4) Allow the dog to wear the Collar Receiver for several minutes and check the strap again. The dog will soon become more familiar with the Collar Receiver, so it is crucial to ensure the fit comfortable and flattering.



CAUTION: RISK OF SKIN DAMAGE

For comfort, safety and effectiveness of this product please check the fit of the dog's collar frequently. If observing any skin irritation, immediately discontinue use of the collar for a few days. If the skin condition persists beyond 48 hours, consult a veterinarian. These collars can cause pressure necrosis, commonly known as bed sores, if used incorrectly and is often misidentified as burns.

Do not attach a leash to the collar, which can result in squeezing the Contact Points too tightly against your dog's neck.

The design of the Collar Receiver discourages constantly wearing the device. Pettrainer recommends the collar not be worn for more than 12 hours out of every 24-hour period.

Most dogs feel uncomfortable when wearing the collar for the very first time. Do not use any functions until the dog is accustomed to the collar.

Petrainer suggests giving the dog, the vibration stimulation before following it with a static shock. After training for a while using this method, the dog will be aware that after vibration comes a static shock. Vibration will act as a warning, and static shock only acts as a menace that might be necessary sometimes.

Pairing Collar Receiver to Transmitter

Note: Transmitter and receiver are pre-paired when leaving our manufacturing facility. In case the pairing is not established or you would like to repair the units, please follow the instructions below:

1. Press Power Button on the Remote Transmitter once to turn it on.
2. Power on the Collar Receiver by pressing the Power button once on the Collar Receiver, it will come with a beep.
3. Press and hold the Power Button for about 3 seconds until a beep sounds, and the indicating light will begin to flash quickly.
4. Press any stimulation button on the transmitter to pair to Receiver Collar. When the Remote Transmitter and Collar Receiver are paired successfully the indicating light will stop flashing quickly.
5. If needing to pair a second Collar Receiver, follow the same steps but first push your Toggle Switch in the other direction.

Note: If the unit stops powering on or communicating with each other, please simply recharge the device, it will reset and begin to operate normally.

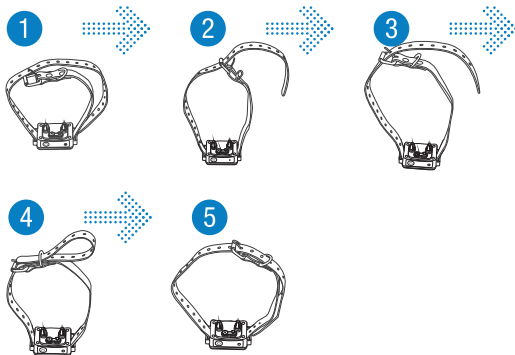
Step 4 Re-thread the collar (as diagram)

Regular Maintenance

Ensure Contact Points are not too tight on a weekly basis.

Rinse the Contact Points with alcohol on a weekly basis.

Check the dog's neck for irritation and wash the dog's neck on a weekly basis.



Frequently Asked Questions:

How old does the dog have to be before using the system?

Your dog should have learned basic obedience commands such as, "sit" or "stay." The Collar Receiver might be too large for dogs under 15lbs.

Once my dog completes training and is been obeying my commands, will he have to wear the collar?

Probably not, but you may try to reinforce training with the collar.

Can I use the Pettrainer rechargeable training collar with more than one dog?

Yes, you just need to purchase another Collar Receiver for the system.

Is the Collar Receiver waterproof?

Yes, but always ensure that the Rubber Cover seals the Charging Jack.

Can I replace the Collar receiver with another kind of collar?

No.

Can I attach a leash to the Collar Receiver?

No, this can result in pulling the Contact Points too tightly against the dog's neck. Attach a leash to a separate, nonmetallic collar or a harness. Ensure the extra collar does not put pressure on the Contact Points.

How long can I leave the Collar Receiver on my dog?

The design of the collar discourages constant wearing. We recommend not having the dog wear the collar for more than 12 hours out of every 24-hour period.

Is the training system suitable for all dogs?

The collar is adjustable from length 5.9" (15cm) to 19.6" (50cm), if the dog's neck circumference is smaller than 5.9", you will be forced to rethread the collar, if the dog's neck circumference is larger than 22", this collar may not be suitable for the dog. This collar is not suitable for dogs under 15lbs.

Troubleshooting

My dog is not responding after successfully setting up the training system.

- Charge the Remote Transmitter and Collar Receiver for 6 hours, separately before first use.
- Ensure if the Remote Transmitter and Collar Receiver power is on.
- Check the intensity levels of vibration and static shock, making sure it is not set to 0.
- Ensure the Collar Receiver has sufficient power to operate.
- Check the collar to ensure it fits snugly against your dog's neck.
- If tested for all of the above and the dog is still not responding, please try re-pairing the Remote Transmitter and Receiver Collar.

The Remote Transmitter does not work.

- Check the battery status of the Remote Transmitter.
- Press and hold the Power Button for a few seconds to power on the Remote Transmitter.

My collar-receiver works great for some time, yet it does not work after charging.

- First, check if the receiver has been charged correctly. Check the “prepare the collar receiver” part of the guide for the correct charging method.
- Check if the receiver has been powered on.

I want to test the Collar Receiver on myself, but it does not work.

- When testing the Collar Receiver with your hands, please touch the two electrodes simultaneously, as touching one electrode will not work.

FCC Notice

This device complies with Part 15 of the FCC Rules. Operation is subject to the following two conditions:

- (1) This device may not cause harmful interference, and
- (2) This device must accept any interference received, including interference that may cause undesired operation.

NOTE 1: This equipment has been tested and found to comply with the limits for a Class B digital device, pursuant to part 15 of the FCC Rules. These limits are designed to provide reasonable protection against harmful interference in a residential installation. This equipment generates, uses and can radiate radio frequency energy and, if not installed and used in accordance with the instructions, may cause harmful interference to radio communications. However, there is no guarantee that interference will not occur in a particular installation. If this equipment does cause harmful interference to radio or television reception, which can be determined by turning the equipment off and on, the user is encouraged to try to correct the interference by one or more of the following measures:

- Reorient or relocate the receiving antenna.
- Increase the separation between the equipment and receiver.
- Connect the equipment into an outlet on a circuit different from that to which the receiver is connected.
- Consult the dealer or an experienced radio/TV technician for help.

NOTE 2: Any changes or modifications to this unit not expressly approved by the party responsible for compliance could void the user's authority to operate the equipment.

Common size of different dogs

Size	Neck (cm)	Chest Measurement (cm)	Back Length (cm)	Type
Mini	20-22	25-30	19	Chihuahua, Yorkshire Terrier
Small	20-24	29-36	23	Chihuahua, Yorkshire Terrier, Poodle, Pomeranian
Medium	23-28	35-42	28	Maltese Dog, Shih Tzu
Large	27-31	41-47	31	Miniature Schnauzer, Pekingese
Large	30-34	46-53	35	Schnauzer, English Cocker Spaniel
Large	33-37	52-59	40	Beagle
Huge	43-48	76-84	60	Husky
	47-52	88-97	65	Labrador Retriever
	52-62	92-100	70	Golden Retriever, Old English Sheepdog

Limited one-year warranty

Petrainer warrants this product to be free of defects in parts, materials and workmanship for a period of one year, from date of purchase.

Should any repairs or servicing under this warranty be required, contact Customer Service by phone or email for instructions on how to pack and ship the product to Petrainer.

This warranty gives you specific legal rights and you may also have other rights which vary from state to state.

Petrainer customer service

Telephone: 1-866-877-7949 (US&CA only)

Email: service@ipets-mall.com

Hours: Weekdays 8:00 AM- 8:00 PM EST

- (6) For basic obedience training, vibration is more useful.
- (7) Issue one obedience command at a time, this will reduce confusion and allow the dog to remain focused. Do not use the training system for commands that the dog has not learned.
- (8) During training, look for all the positive changes in the dog's behavior and remember to reinforce them promptly with ample praise and reward.
- (9) Avoid over-correcting your dog. Use as little remote correction as possible during the training process.
- (10) When the dog has become apparently perplexed, shift the focus of the training by drawing the dog's attention to a command they have familiarity. Example: Tell the dog to sit and give abundant praise and encouragement on successful completion of the sit command.
- (11) Do not use the training system to correct or eliminate forms of aggression or biting behavior. When the dog is showing signs of aggressive behavior, immediately contact a professional dog trainer in your local area.
- (12) Please keep in mind, that you should keep training sessions short and end every session on a high note. Stop training and play with the dog as soon the dog has accomplished a new level of proficiency.

Digging

It is important to first understand why your pet is digging. Many dogs, such as terriers, were bred to flush out prey, and digging is very innate to them. Other dogs may be digging to find a cool spot to lie down, or simply out of boredom. Your pet may no longer have the desire to dig if he is provided with the following: A cool, shaded area in which to lie down, and plenty of water. An alternate activity, such as a favorite toy. Plenty of play, exercise, and attention. A yard free from rodents or prey that he may be trying to flush out.

1. Place the Receiver Collar on your pet and wait at least 10 minutes before placing him in the yard. No other people or pets should be in the yard, as you do not want your pet to associate the stimulation with anything other than his digging. Your pet must be securely fenced in or contained during training.

2. From a window or area where your pet cannot see you, wait until your pet begins to dig.

4. If your pet ignores the stimulation, increase the Intensity Level.

3. While your pet digs, press the Stimulation Button and release it when he stops digging. Only press

the button while your pet is in the act of digging, and do not say anything to him.

5. Continue to watch your pet, as he may choose another area to dig.

6. Do not allow your pet in the yard unsupervised until he has completely stopped digging.

Chasing

Chasing is an instinctive behavior stimulated by moving objects. Some dogs have a particularly strong desire to chase that can put them in harm's way and leave you helpless. Never allow your dog off the leash or out of a contained area until he has learned the "Come" command, regardless of the distraction. Be consistent and correct your dog every time he chases something. It is vitally important that you and your dog remain safe while learning during on-leash training. Your dog should be on a strong leash, long enough for him to attempt to chase an object, but short enough for him not to reach a road or other unsafe area. You must also be physically strong enough to restrain your dog when he tries to chase.

1. If your dog has not learned the "Come" command, keep a leash on him so you can physically stop him before he reaches the object he is chasing.

2. Set up a scenario where your dog is enticed to chase an object. Common items could be cars, motorcycles, bicycles, etc. (do not use toys).

-3-

Trash Raiding

The easiest way to prevent trash raiding is to remove garbage and tempting food from your pet's environment. You can use the Remote Trainer to teach your pet to stay away from these items:

1. Pick a temptation for your pet and position yourself where he cannot see you.

2. While your pet's mouth is touching the temptation, press and hold the Stimulation Button.

Immediately release the button when your pet leaves the temptation.

3. Do not say anything, as you want your pet to associate the stimulation with his behavior, not you.

4. If your pet does not respond to the stimulation, increase the Intensity Level and repeat the process.

5. Repeat this process in several different locations with different temptations.

General Training Tips:

Follow these tips on how to get the best out of your PetTrainer Training Collar.

(1) Make training sessions short and positive (between 10-15 minutes long for each session.) This will enable the dog to keep its attention focused on the trainer.

(2) Train one dog at a time.

(3) During the first initial training sessions, keep the dog in a familiar outdoor environment. Training in new locations may cause the dog to become distracted, causing you to reinforce commands with the Collar Receiver more than necessary.

(4) Use a long leash fastened to a non-metallic collar to help the dog's learning. Ensure the additional collar and leash does not interfere with the Contact Points on the Collar Receiver. Do not use the remote training collar without a long leash until your dog is fully trained.

(5) More success will occur by teaching the dog a command first before trying to reinforce the command with the Remote Transmitter.

-4-

Perfecting Basic Obedience

Note: When we refer to stimulation button this will change depending on your model, for models PET98DR, PET98DB, this will be your "Y" button. For any other models, there should be a stimulation button for each type of stimulation (static shock, vibration and beep).

The "Sit" Command

1. Put a separate, non-metallic collar on your pet's neck above the Receiver collar and attach at least a 10-foot leash.

Note: Be sure the extra collar does not put pressure on the Contact Points.

2. Hold the leash and the Remote Transmitter in one hand, keep your other hand free to guide your pet into a "Sit" position.

3. Press and hold your stimulation button, be it shock, vibration or beep.

4. Immediately give the "Sit" command while holding down your desired stimulation button.

5. Release the stimulation as soon as your dog sits and then give him praise.

6. Release your dog from the "Sit" command and play.

7. Repeat Steps 2 through 6.

The "Come" Command

1. Put a separate, non-metallic collar on your pet's neck ABOVE the Receiver Collar, and attach a 10-foot leash. Note: Be sure the extra collar does not put pressure on the Contact Points.

2. Hold your leash in one hand and the Remote Transmitter in the other.

3. Wait for your pet to walk away from you. Once he's far enough away, press and hold the Stimulation Button (shock, vibration or beep) on your Remote Transmitter.

4. Immediately give the command "Come" while continuing to hold your Stimulation Button.

5. Using the leash, gently guide your pet toward you until he begins to come in your direction.

6. Immediately release the Stimulation Button as soon as your pet steps towards you, and praise him enthusiastically.

7. Quickly move backwards as your pet begins to come back to you, praising him the entire time.

8. Praise your pet when he returns to you.

9. Repeat Steps 3 through 8.

10. Once your pet responds readily to the "Come" command several times, back away from him

-1-

without giving a command. When your pet turns toward you, give the command "Come" (WITHOUT STIMULATION) and praise him while you continue to back up. Praise your pet when he returns to you.

11. Use your leash to prevent your pet from running past you. If your pet manages to run past you, repeat Steps 3 through 8.

The "Stay" Command

1. Put a separate, non-metallic collar on your pet's neck ABOVE the Receiver Collar, and attach a 10-foot leash. Note: Be sure the extra collar does not put pressure on the Contact Points.

2. Put your pet on his bed. Hold your leash in one hand and the Remote Transmitter in the other.

3. Staying within 3 feet, walk the perimeter of the bed. Do not say anything to your pet.

4. If your pet tries to leave the bed, press and hold the Stimulation Button and give the "Stay" command. Continue to hold the button until your pet is back on his bed. If necessary, use the leash to guide your pet onto his place.

5. Praise your pet when he is back on his bed.

6. Once your pet has settled for a few seconds, release him and play calmly.

7. Repeat steps 1 through 5.

Eliminating Unwanted Behavior

Jumping Up

Pets typically jump up to get attention. If you do not want your pet to jump on you, then friends or members of the family should not encourage this behavior. That means every time your pet jumps on someone, he should be reprimanded or redirected to an alternate and acceptable behavior, for which he can receive praise.

Note: It is best if your pet first understands the "Sit" command.

1. As soon as your pet lifts his paws off the ground to jump on you, press the Stimulation Button and give the command "Sit."

2. Release the Stimulation Button immediately once your pet is sitting, and verbally praise him.

3. If your pet ignores the stimulation, increase the Intensity Level until he/she responds.

4. Practice this exercise in several different areas and use different people for distractions.

-2-