

## MPE Report RF Exposure Exemption

Applicant : FN-LINK TECHNOLOGY LIMITED  
Product Name : WiFi/bt module  
Trade Name : FN-LINK  
Model Number : 6233E-UUB  
Applicable Standard : 47 CFR § 2.1091  
Received Date : Nov. 07, 2022  
Issue Date : May 17, 2023

### Issued by

Approved By :

\_\_\_\_\_  
(William Chung)

Eurofins E&E Wireless Taiwan Co., Ltd.  
No. 140-1, Changan Street, Bade District,  
Taoyuan City 334025, Taiwan (R.O.C.)  
Tel : +886-3-2710188 / Fax : +886-3-2710190



Taiwan Accreditation Foundation accreditation number: 1330

#### **Note:**

- 1.The test results are valid only for samples provided by customers and under the test conditions described in this report.
- 2.This report shall not be reproduced except in full, without the written approval of Eurofins E&E Wireless Taiwan Co., Ltd.
- 3.The relevant information is provided by customers in this test report. According to the correctness, appropriateness or completeness of the information provided by the customer, if there is any doubt or error in the information which affects the validity of the test results, the laboratory does not take the responsibility.

### Revision History

Rev.	Issued Date	Revisions	Revised By
00	May 17, 2023	Initial Issue	Rowan Hsieh

# Contents

1.	General Information .....	4
2.	Description of Equipment under Test (EUT) .....	5
3.	RF Exposure Limit .....	6
4.	RF Exposure Assessment.....	7
5.	Result .....	9
6.	Conclusion.....	9

## 1. General Information

### 1.1 Reference Applicable Standard

Standard	Description	Version
IEEE C95.1	American National Standard safety levels with respect to human exposure to radio frequency electromagnetic fields, 300 KHz to 100 GHz, New York.	1992
47 CFR § 2.1091	Radiofrequency radiation exposure evaluation: mobile devices.	2023
47 CFR § 1.1307	Actions that may have a significant environmental effect, for which Environmental Assessments (EAs) must be prepared.	2023
47 CFR § 1.1310	Radiofrequency radiation exposure limits.	2023

### 1.2 Testing Location

Site Name: Site Name: Eurofins E&E Wireless Taiwan Co., Ltd.

Site Address: ☒ No. 140-1, Changan Street, Bade District, Taoyuan City 334025, Taiwan (R.O.C.)

Site Address: ☐ No. 2, Wuquan 5th Rd. Wugu Dist., New Taipei City, Taiwan (R.O.C.)

## 2. Description of Equipment under Test (EUT)

Applicant	FN-LINK TECHNOLOGY LIMITED No.8,Litong Road,Liuyang Economic & Technical Development Zone,Changsha,Hunan,China
Manufacturer	FN-LINK TECHNOLOGY LIMITED No.8,Litong Road,Liuyang Economic & Technical Development Zone,Changsha,Hunan,China
Product Name	WiFi/bt module
Model Number	6233E-UUB
FCC ID	2AATL-6233E-UUB
Operating Frequency Range (MHz)	WLAN 2.4G: 2412~2462 MHz WLAN 5.2G: 5150~5250 MHz WLAN 5.3G: 5250~5350 MHz WLAN 5.6G: 5470~5725 MHz WLAN 5.8G: 5725~5850 MHz Bluetooth BR/EDR/ LE: 2402 – 2480 MHz
Supported Modulations	IEEE 802.11 a/b/g/n/ac/ax: DSSS, OFDM Bluetooth BR/EDR/LE: GFSK, $\pi$ 4-DQPS, 8DPSK
USE Distance	20 cm
Antenna TX Chain	SISO

### Note:

The above information of DUT was declared by manufacturer. Please refer to the specifications or user's manual for more detailed description.

### 3. RF Exposure Limit

For devices that operate at larger distances from persons, where there are minimal RF coupling interactions between a device and the user or nearby persons, RF exposure compliance using maximum permissible exposure (MPE) limits is applied. The limits for MPE is listed as below:

Limits for General Population / Uncontrolled Exposure				
Frequency Range (MHz)	Electric Field Strength (E) (V/m)	Magnetic Field Strength (H) (A/m)	Power Density (S) (mW/cm <sup>2</sup> )	Averaging Time E  <sup>2</sup> , H  <sup>2</sup> or S (minutes)
0.3-1.34	614	1.63	(100)*	30
1.34-30	824 / f	2.19 / f	(180 / f <sup>2</sup> )*	30
30-300	27.5	0.073	0.2	30
300-1500	-	-	F / 1,500	30
1,500-100,000	-	-	1.0	30
Limits for Occupational / Controlled Exposure				
Frequency Range (MHz)	Electric Field Strength (E) (V/m)	Magnetic Field Strength (H) (A/m)	Power Density (S) (mW/cm <sup>2</sup> )	Averaging Time E  <sup>2</sup> , H  <sup>2</sup> or S (minutes)
0.3-3.0	614	1.63	(100)*	6
3.0-30	1,842 / f	4.89 / f	(900 / f <sup>2</sup> )*	6
30-300	61.4	0.163	1.0	6
300-1,500	-	-	F / 300	6
1,500-100,000	-	-	5	6

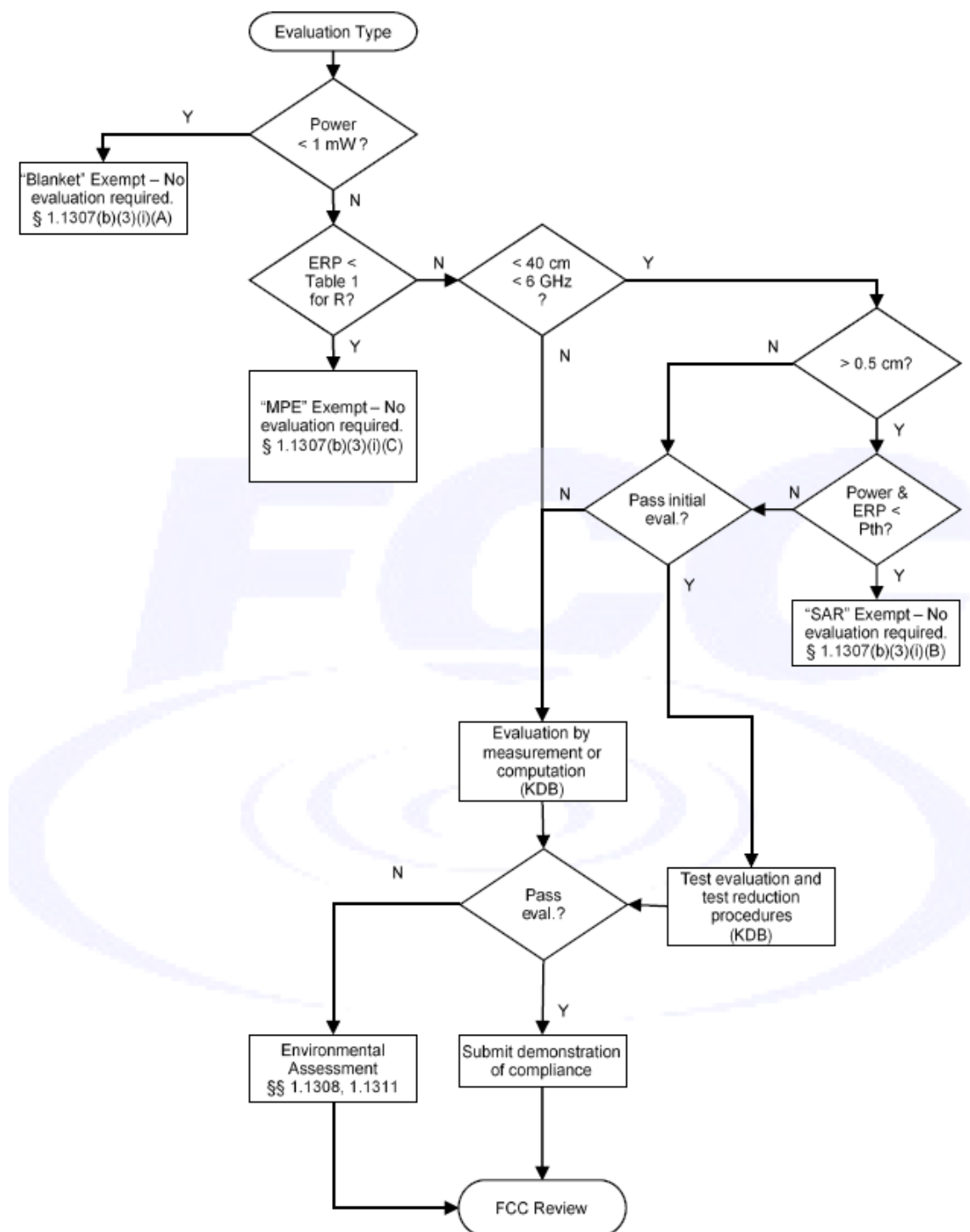
f = frequency in MHz. \* = Plane-wave equivalent power density.

## 4. RF Exposure Assessment

### 4.1 Exemption Evaluation

Exemption evaluation was performed according to the appendix A and B in KDB447498 D04.

The General Sequence for Determination of Procedure demonstrated in Figure A.1 of KDB447498 D04 was applied.



## 4.2 Human Exposure Assessment

Due to the design and installation of this product, it is not possible to conduct SAR evaluation. This is because client either manufactures or supplies the antenna(s) that will be used in the installation of this product. Therefore, this product will be evaluated as a mobile device per 47 CFR § 1.1310 titled "Radiofrequency radiation exposure limits", generally referred to as MPE limits.

In 47 CFR § 2.1091, paragraph (b) defines a mobile device as "a transmitting device designed to be used in other than fixed locations and to generally be used in such a way that a separation distance of at least 20 cm is normally maintained between the transmitter's radiating structure(s) and the body of the user or nearby persons."

Exposure evaluation

$$S_{exp} = \frac{EIRP}{4\pi d^2} = \frac{PG}{4\pi d^2} (W / m^2)$$

Where

S: is the input power (W);

G: is the antenna gain;

d : is the distance between antennas and evaluation point (m).



## 5. Result

Band	Frequency (MHz)	MAX Power (dBm)	<§1.1307(b)(3)(i)(C)> Exemption Minimum Distance (m)	<§1.1307(b)(3)(i)(C)> Exemption Threshold ERP (W)	<§1.1307(b)(3)(i)(C)> Exemption considerations
WLAN 2.4 GHz	2412 - 2462	15.32	0.020	0.768	Qualified
WLAN 5.2 GHz	5150 - 5250	15.22	0.009	0.768	Qualified
WLAN 5.3 GHz	5250 - 5350	15.45	0.009	0.768	Qualified
WLAN 5.6 GHz	5470 - 5725	15.46	0.009	0.768	Qualified
WLAN 5.8 GHz	5725 - 5850	15.45	0.008	0.768	Qualified
Bluetooth	2402 - 2480	3.49	0.020	0.768	Qualified

Note:

1. The Calculation are based on Max average power and Max Antenna gain.
2. the device is qualified for exemption under 47 CFR §1.1307(b)(3)(i)(C).

### Simultaneous Transmitting :

WLAN 2.4G + WLAN 5G

Total Exposure Ratio: 0.18

## 6. Conclusion

The result shows that this device is compliant to FCC RF Exposure restriction.

---END---