

MB-100 Motorcycle Bluetooth Headset User's Guide

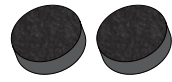
Accessories



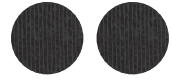
Main Unit x1



Main Unit Mounting Plate x1



Speaker Pads x2



Speaker Velcro Tapes x2

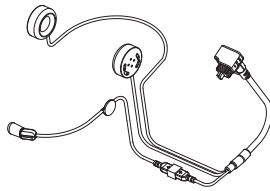


Microphone Velcro Tape x1

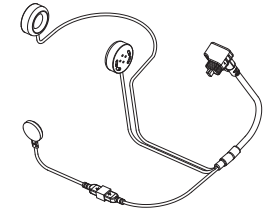


MINI USB Charging Lead x1

Helmet Headset
Boom Microphone(Open Face Helmet)



Helmet Headset
Flexible Wired Microphone(Full Face Helmet)



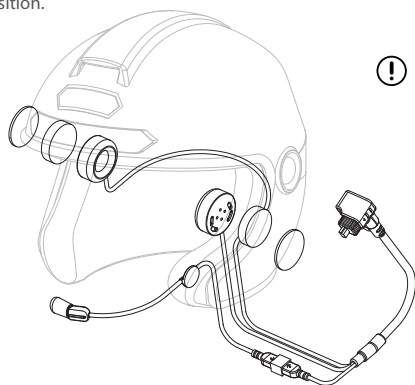
***Helmet Headset. (The headset type is determined from the local dealer.)**

Alcohol Wipes x1
User's Guide x1

Installation Diagram

Helmet Headset Installation

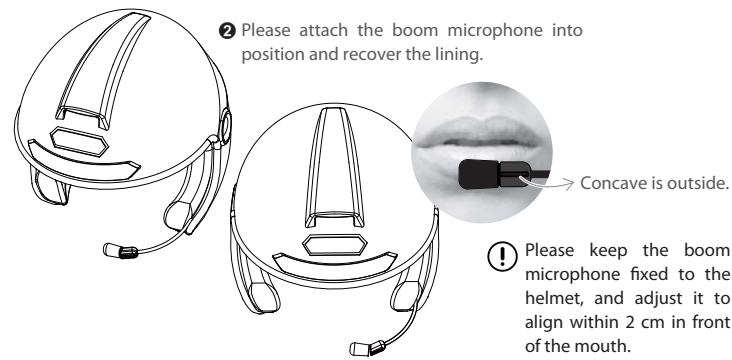
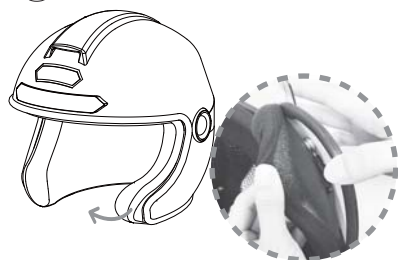
Please stick the speaker Velcro tapes to the ear pockets inside the helmet. Use the speaker pads to close your ears if the ear pockets are too deep, and then attach the headset into position.



! Please make sure the speakers are positioned exactly in line with your ear, otherwise the volume performance is limited.

Boom Microphone Installation - Open Face Helmet

! Please remove helmet lining and stick the microphone Velcro tape to the helmet inside.



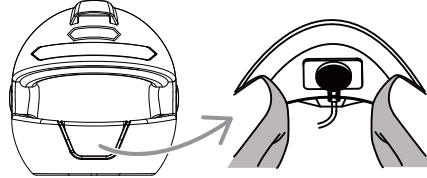
! Please attach the boom microphone into position and recover the lining.

! Please keep the boom microphone fixed to the helmet, and adjust it to align within 2 cm in front of the mouth.

Flexible Wired Microphone Installation - Full Face Helmet

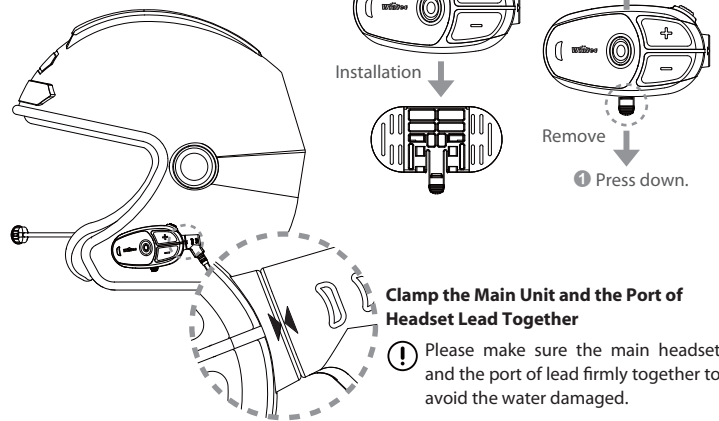
Please remove helmet lining and stick the microphone Velcro tape in front of the mouth of the full face helmet, and then fasten the flexible wired microphone into position and recover the lining.

! Please keep the boom microphone fixed to the helmet, and adjust it to align within 2 cm in front of the mouth.

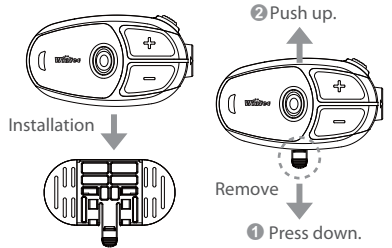


Main Mounting Plate Installation

Please stick firmly the main mounting plate on the helmet.



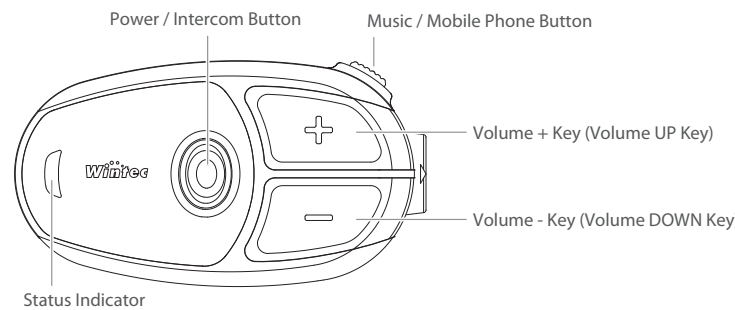
Clamp the Main Unit to the Mounting plate



Clamp the Main Unit and the Port of Headset Lead Together

! Please make sure the main headset and the port of lead firmly together to avoid the water damaged.

Controls and Switches



Power ON / OFF

Press and hold [Power / Intercom Button] about 3 seconds to power on/off.

Volume Adjustment

Momentarily press repeatedly on [Volume + Key] or [Volume - Key] to control volume. In the case of multi audio mixer, please set volume of MB-100 headset to medium, and adjust respectively volume in other Bluetooth devices by your comfortable proportion. After finishing the adjustments, the overall volume is can easily control by [Volume Key] on the headset.

Headset Pairing

Phone Pairing

Power on the MB-100 power, please press and hold [Music / Mobile Phone Button] about 6 seconds to go into phone pairing mode and the lights will be flashing Red / Blue. Select the MB-100 pairing in Bluetooth function of your mobile phone and you will hear the voice notification if the device is connected successfully.

Intercom Pairing

Power on two MB-100 headsets, please press and hold [Power / Intercom Button] about 6 seconds respectively, and the lights will be flashing Red / Green. Short press [Power / Intercom Button] on rider's MB-100 to wait for connection, and the lights will be changed to Red under the rider pairing mode. After finishing the intercom pairing, you will hear the voice notification.

Navigator Pairing

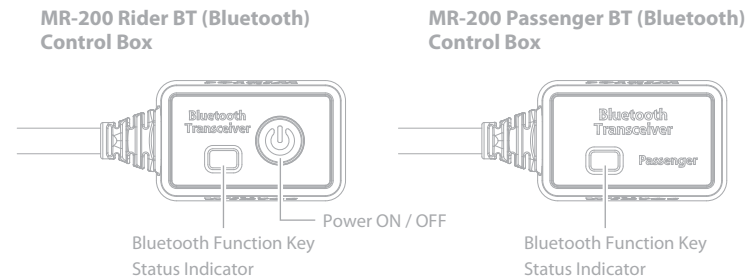
Power on the MB-100, please press and hold [Music / Mobile Phone Button] + [Volume + Key] about 6 seconds to go into the navigator pairing mode and the lights will be flashing Blue. Select the MB-100 pairing in Bluetooth function of Navigator and you will hear the voice notification if the device is connected successfully.

Radar Speed Detector and Other Bluetooth Device Pairing

Power on the MB-100, please press and hold [Music / Mobile Phone Button] + [Volume - Key] about 6 seconds to go into the radar speed detector and other Bluetooth device pairing mode and the lights will be flashing Red. Select the MB-100 pairing in Bluetooth device and you will hear the voice notification if the device is connected successfully.

MR-200 Radiocom Pairing

Power on the MB-100, please press and hold [Power / Intercom Button] about 6 seconds to go into MR-200 Radiocom pairing mode and the lights will be flashing Red / Green. Set the MR-200 Bluetooth Control Box to go into pairing mode, and you will hear the voice notification if the device is connected successfully.



Bluetooth Function Key / Status Indicator

- Waiting for connection: Blue light flashing.
- Pairing mode: Red / Blue lights flashing.
- Connected: Blue light stays on.

Power ON / OFF

Press and hold for about 3 seconds to ON / OFF.

How To Pair Headset

Turn off the Bluetooth control box power (press and hold Bluetooth function key about 3 seconds to turn off Bluetooth). Press and hold for about 6 seconds to go into pairing mode and the lights will be flashing Red / Blue.

Clear All Paired Devices

Bluetooth control box can remember two paired headsets, if you need to clear the pairing unit, with the blue light flashing (wait for link status), hold the Bluetooth button about 12 seconds until the red light shows for 5 seconds, and then all pairings are cleared.

Mobile Phone Operation

- Answer a call: Short press [Music / Mobile Phone Button].
- End a call or cancel an outgoing call: Short press [Music / Mobile Phone Button].
- Reject a call: Press and hold [Music / Mobile Phone Button] for 3 seconds.
- Voice dialing: Press and hold [Music / Mobile Phone Button]. (The function supported can vary from the mobile phone operator, please refer to the user guide of your mobile phone)
- Redial the last number: Short press [Music / Mobile Phone Button] twice quickly. (If the music is playing, please pause first.)

Music Sharing

When the MB-100 and your mobile phone connected, you can easily operate the music sharing function.

- Play the track: Short press [Music / Mobile Phone Button]. (Operate in music pausing)
- Pause the track: Short press [Music / Mobile Phone Button]. (Operate in music playing)
- Repeat to the track: Press and hold [Volume + Key] for 3 seconds. (Operate in music playing)
- Skip back to the previous track: Press and hold [Volume + Key] for 3 seconds. (Operate in music pausing)
- Skip forward to the next track: Press and hold [Volume - Key] for 3 seconds. (Operate in music playing or pausing)

Intercom Operation

When two MB-100 headsets connected, you can easily turn on/off Intercom function.

- Turn on intercom function: Short press [Power / Intercom Button]. (Operate in intercom off)
- Turn off intercom function: Short press [Power / Intercom Button]. (Operate in intercom on)

Radiocom Connected Operation

You can use the extension lead which is specialized for radiocom from our company to connect the external audio jack on the helmet headset of MB-100. Due to various radiocom adapters, please contact the local dealers for more information. (The MB-100 can use for the radiocom under no power supply.)

Automatically / Manually Answer Phone Calls

If you want to automatically answer phone calls, please operate the automatically / manually Answer Phone Calls function. (Factory Default: Manually Answer Phone Calls)

- Turn on automatically answer: Power on the MB-100, press and hold [Volume + Key] + [Volume - Key] for 3 seconds. (Under the manually answer calls)
- Turn off automatically answer: Power on the MB-100, press and hold [Volume + Key] + [Volume - Key] for 3 seconds. (Under the automatically answer calls)

Voice Notification

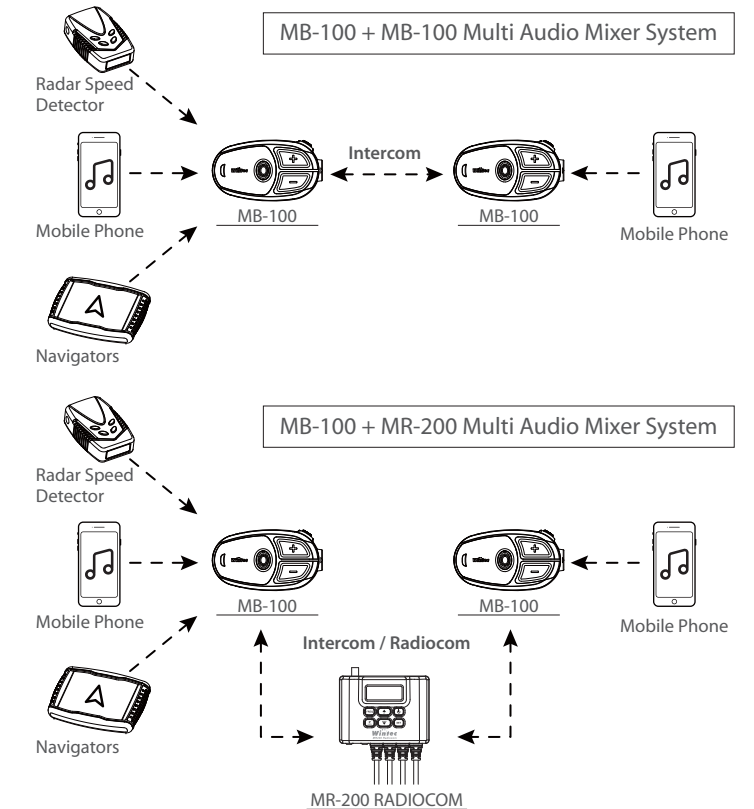
MB-100 supports voice notification function, you can use below operation to select language.

Power on the MB-100, please press and hold [Music / Mobile Phone Button] + [Volume + Key] + [Volume - Key] for 6 seconds to go into switching language voice.

Factory Reset

Please noted that operating the factory reset will clear all paired units and data, which includes voice notification and automatically answer phone calls.

Power on the MB-100, please press and hold [Music / Mobile Phone Button] + [Power / Intercom Button] for 6 seconds, the lights will be flashing Red five times to recover factory settings.



Product Specifications

Size: 76(H)x 42(W)x 23(D) mm

Weight: 44g (Main body)

Bluetooth Core Specifications: Bluetooth 4.1+EDR, Class II

Bluetooth Profiles: HSP / HFP / AVRCP / A2DP

Frequency Range: 2402 ~ 2480GHz

Operating Temperature: -10 ~ +50°C

Operating Time: Usage time of music sharing approx.26 hours. / Usage time of intercom approx.22 hours.

Troubleshooting

- Speakers no sounds / Side speaker no sounds: Please make sure the main unit and the port of helmet lead whether clamp firmly together.
- Speaker low volume: Please make sure the speakers are positioned exactly in line with your ear. If the speakers are behind your ear, it will cause the volume extremely low.
- Microphone not working: Please make sure the direction of the microphone and the helmet headset port. (Align the arrows and clamp on)
- Microphone low volume: Please make sure the boom microphone fastened within 1-2cm in front of your mouth.

Federal Communication Commission Interference Statement

This equipment has been tested and found to comply with the limits for a Class B digital device, pursuant to Part 15 of the FCC Rules. These limits are designed to provide reasonable protection against harmful interference in a residential installation.

This equipment generates, uses and can radiate radio frequency energy and, if not installed and used in accordance with the instructions, may cause harmful interference to radio communications. However, there is no guarantee that interference will not occur in a particular installation. If this equipment does cause harmful interference to radio or television reception, which can be determined by turning the equipment off and on, the user is encouraged to try to correct the interference by one of the following measures:

- Reorient or relocate the receiving antenna.
- Increase the separation between the equipment and receiver.
- Connect the equipment into an outlet on a circuit different from that to which the receiver is connected.
- Consult the dealer or an experienced radio/TV technician for help.

FCC Caution: To assure continued compliance, any changes or modifications not expressly approved by the party responsible for compliance could void the user's authority to operate this equipment. (Example - use only shielded interface cables when connecting to computer or peripheral devices).

FCC Radiation Exposure Statement

This equipment complies with FCC RF radiation exposure limits set forth for an uncontrolled environment. This equipment should be installed and operated with a minimum distance of 0.5 centimeters between the radiator and your body.

This transmitter must not be co-located or operating in conjunction with any other antenna or transmitter. The antennas used for this transmitter must be installed to provide a separation distance of at least 0.5 cm from all persons and must not be co-located or operating in conjunction with any other antenna or transmitter.

This device complies with Part 15 of the FCC Rules. Operation is subject to the following two conditions:
(1) This device may not cause harmful interference, and (2) This device must accept any interference received, including interference that may cause undesired operation.