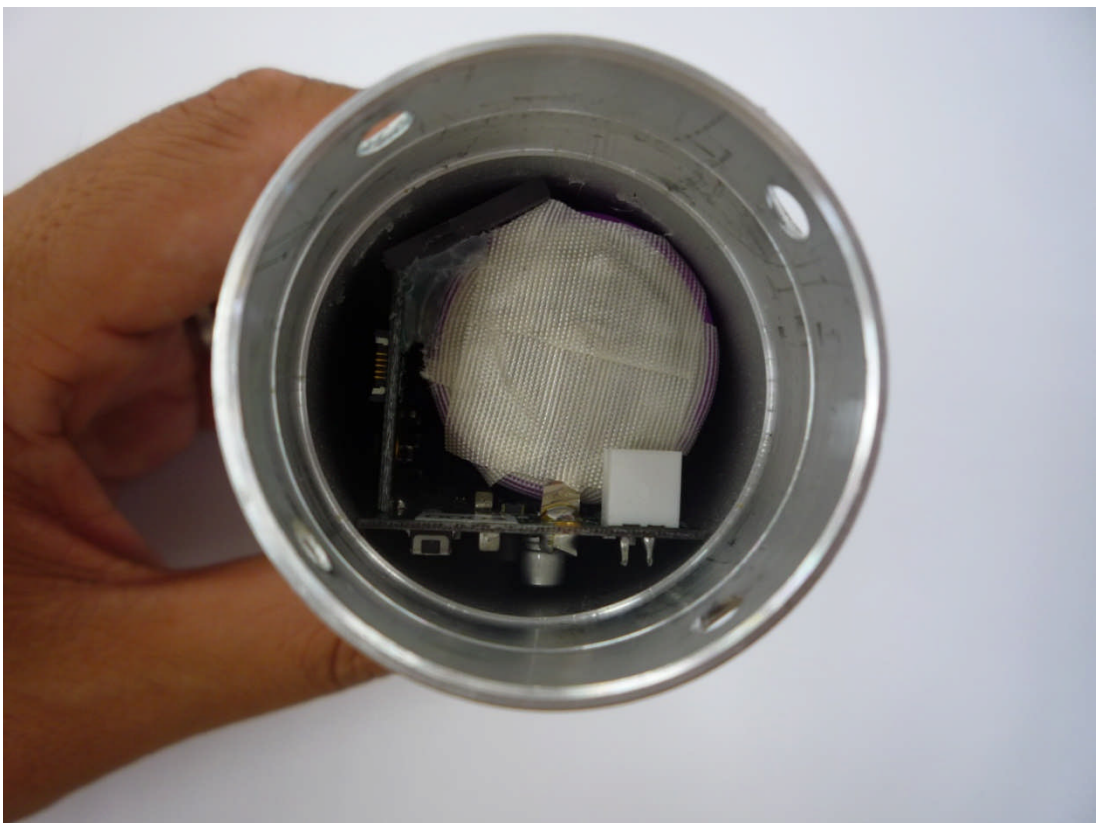


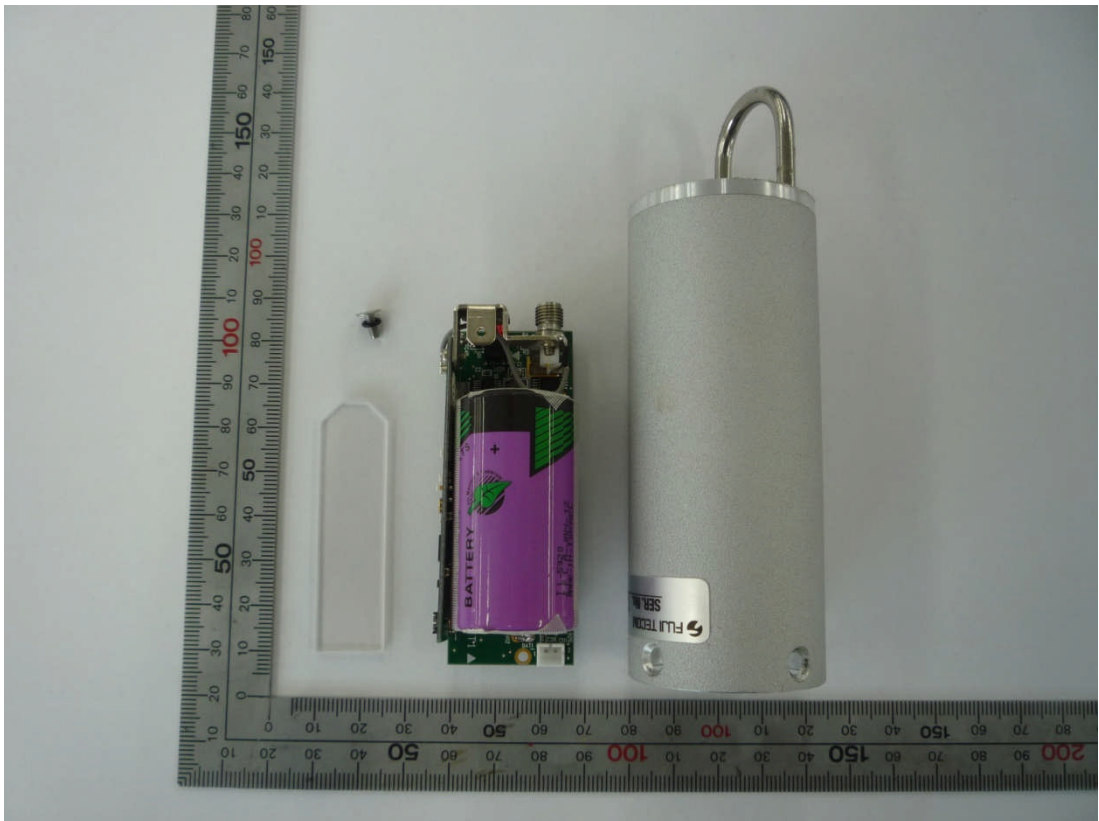
Disassemble photo of Logger



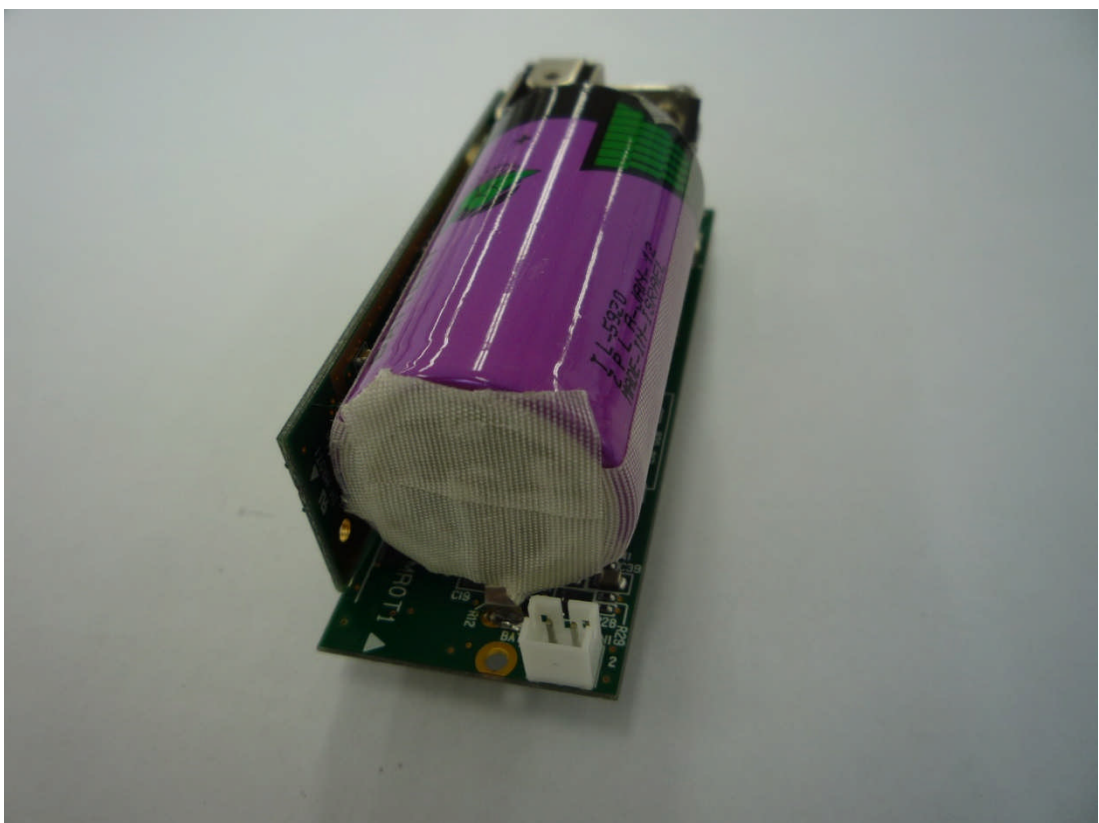
Remove sensor and 4 screw



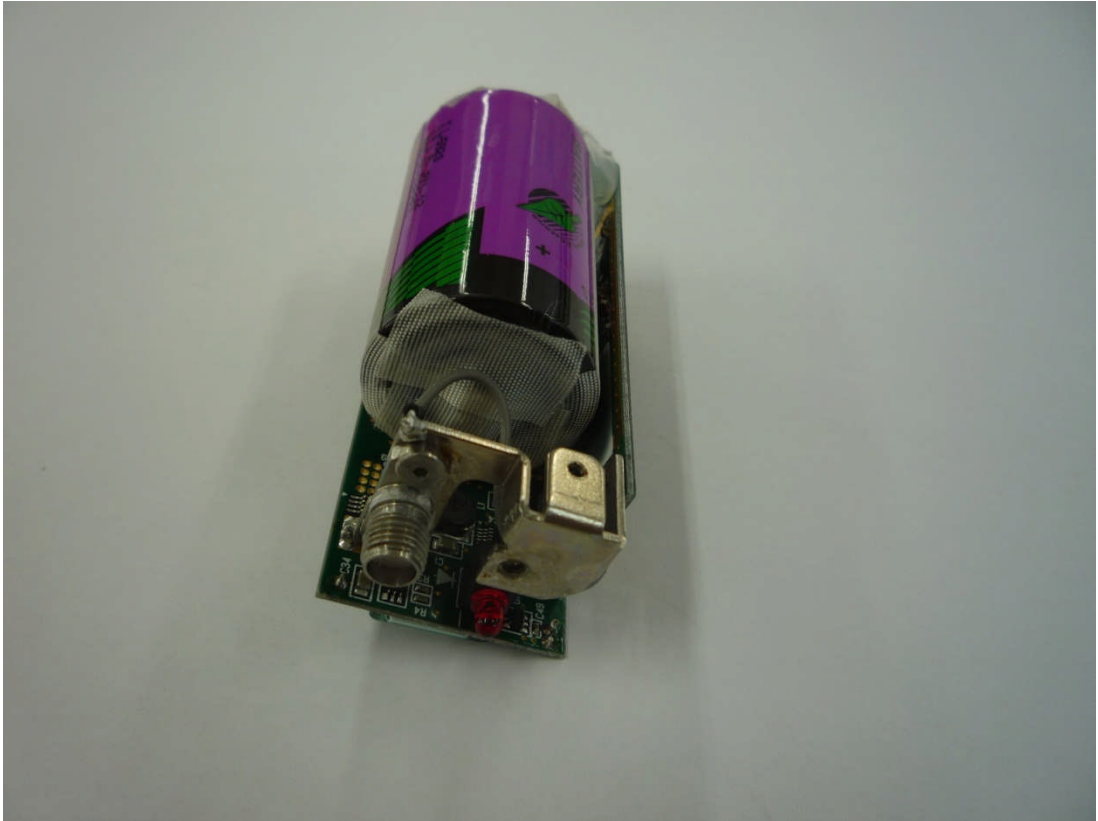
View of inside



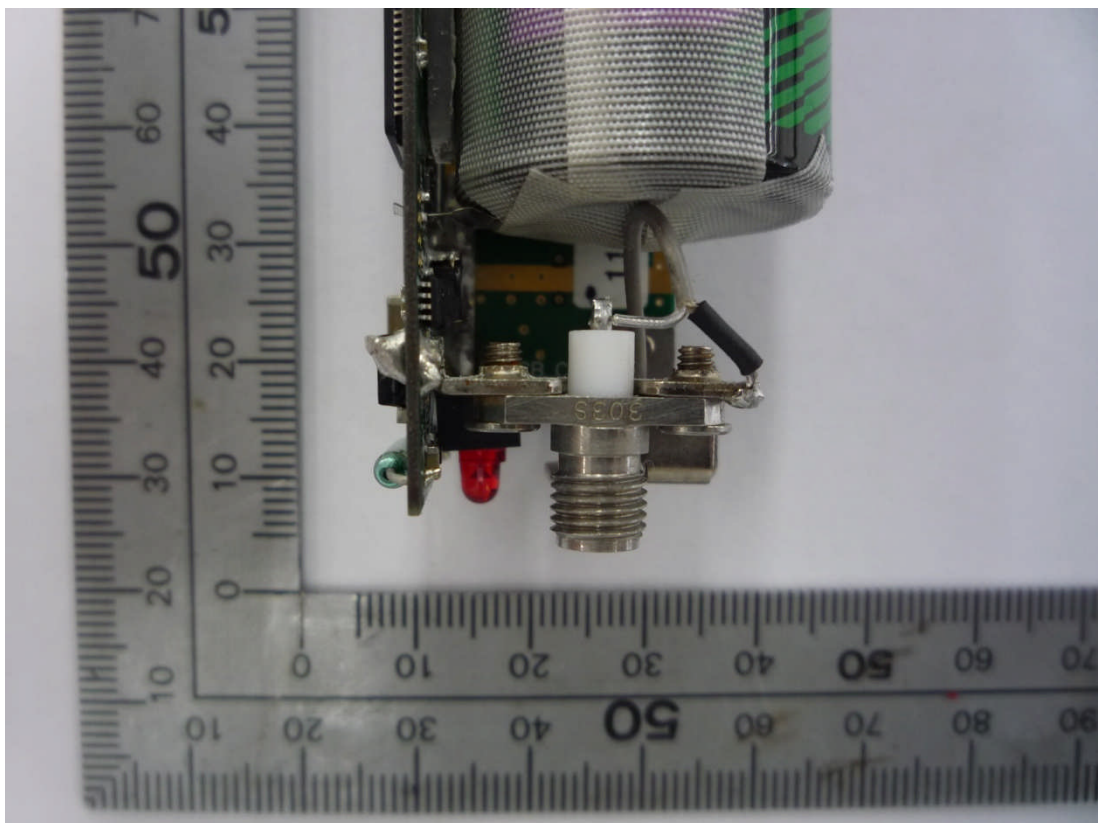
Remove case and view main PCB



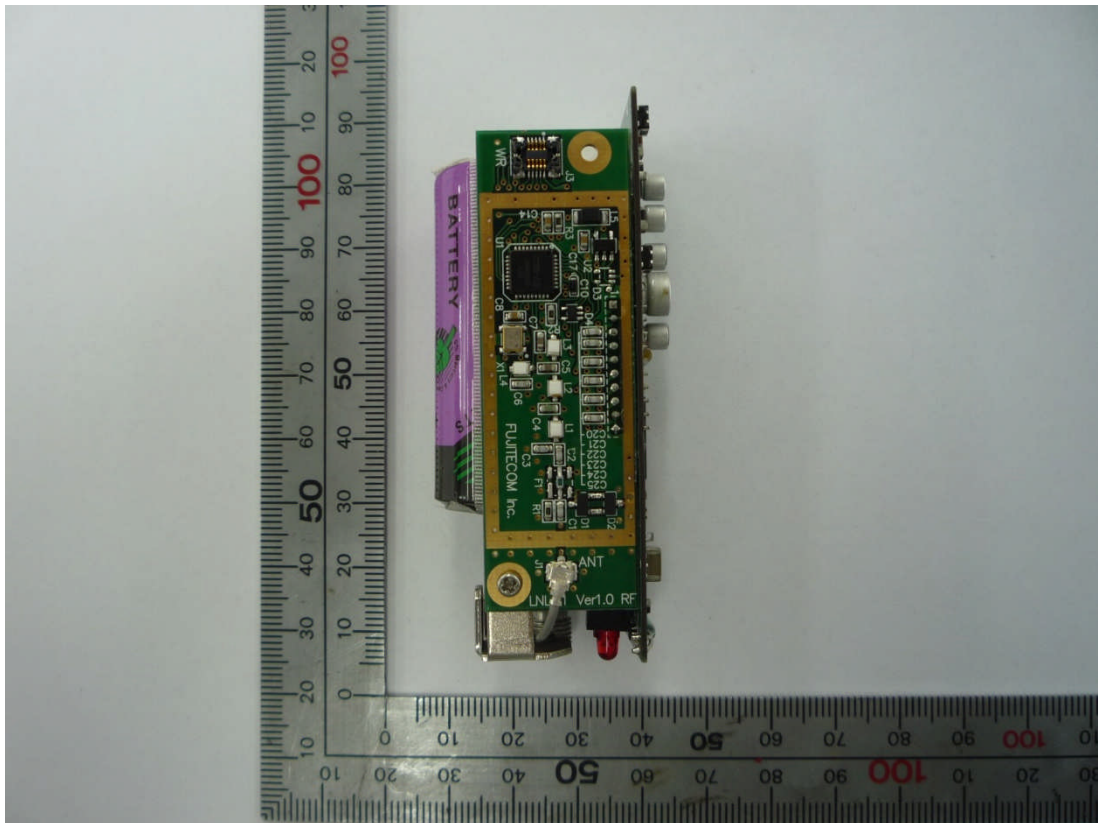
Structure of PCB (Bottom view)



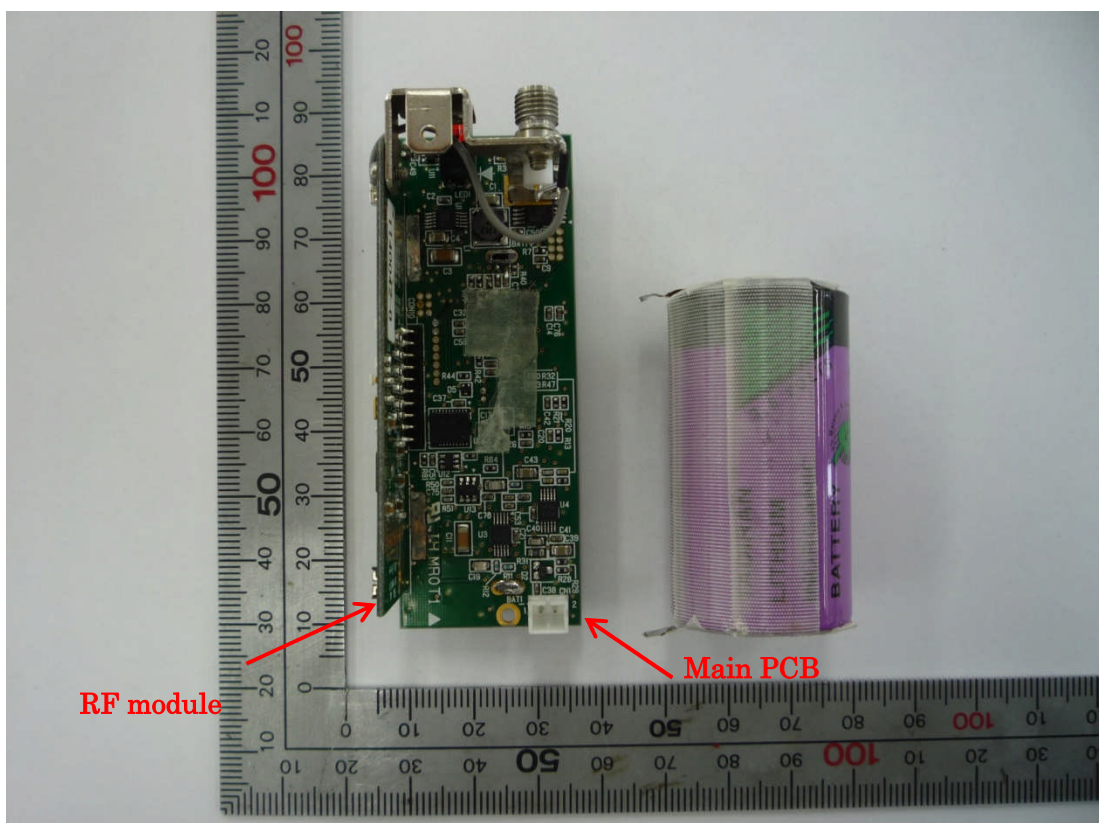
Structure of PCB (Top view)



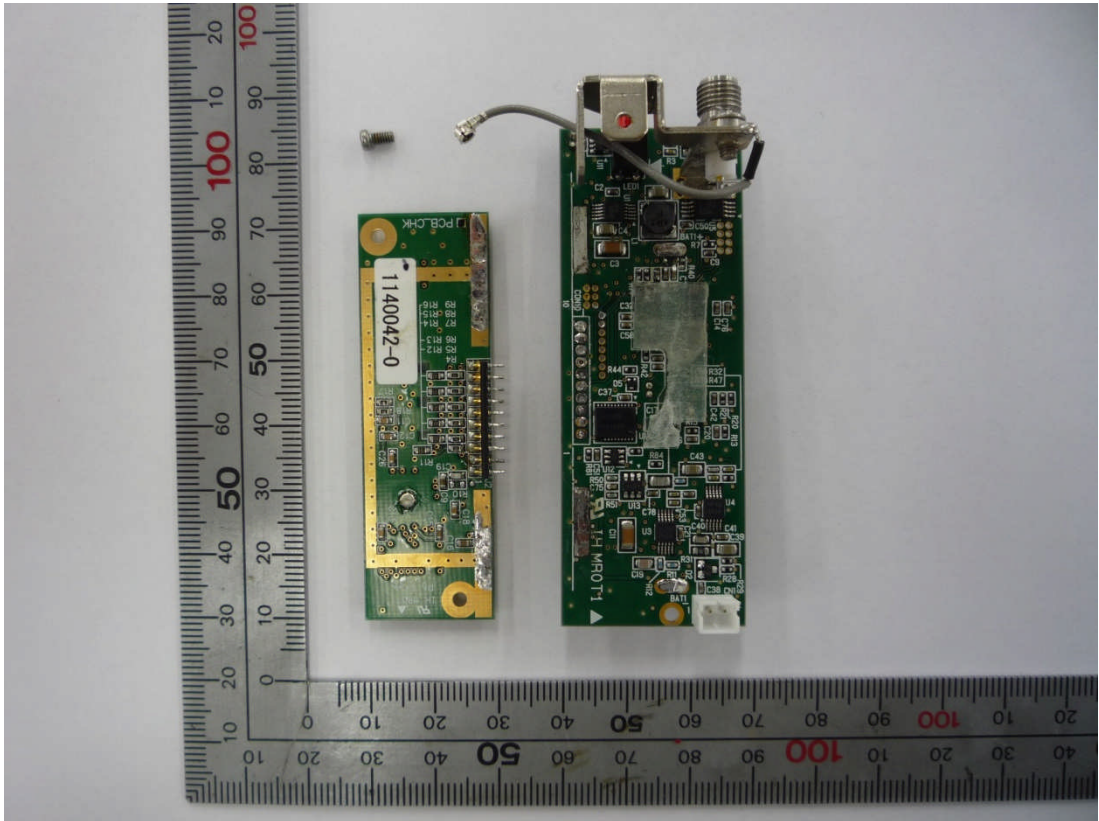
Structure of PCB (Antenna side view)



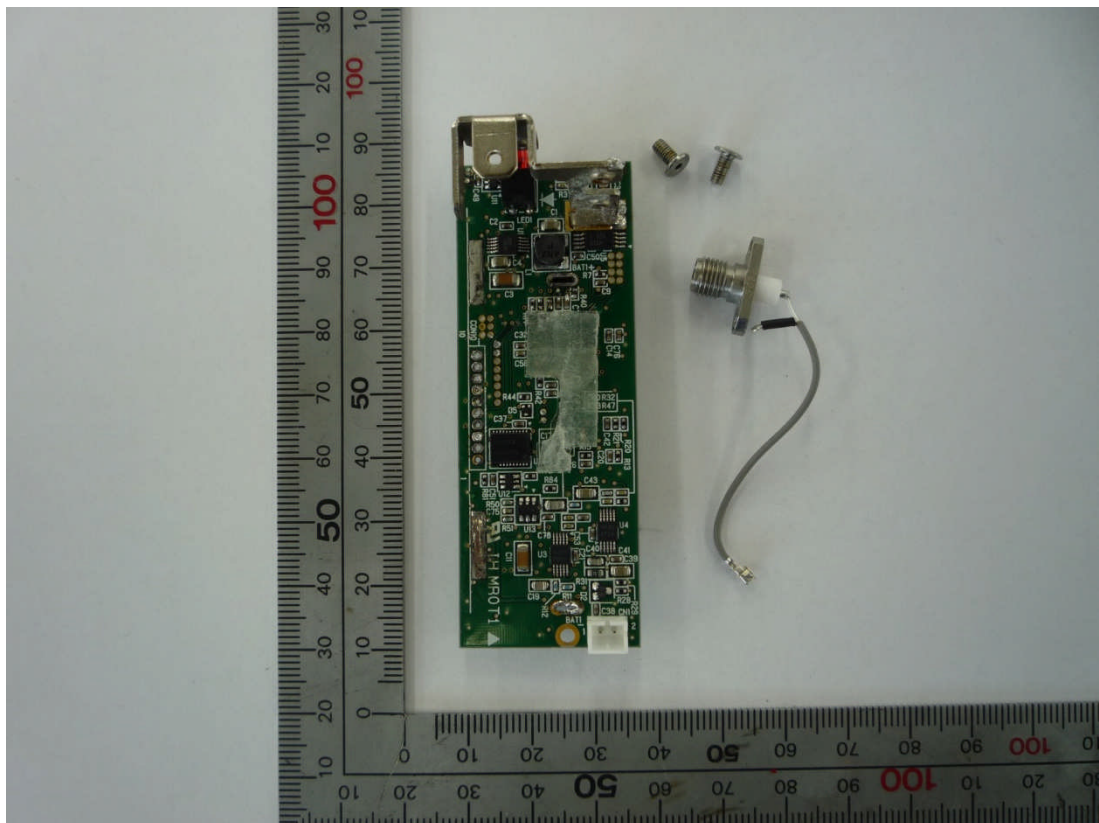
Structure of PCB (Rear view)



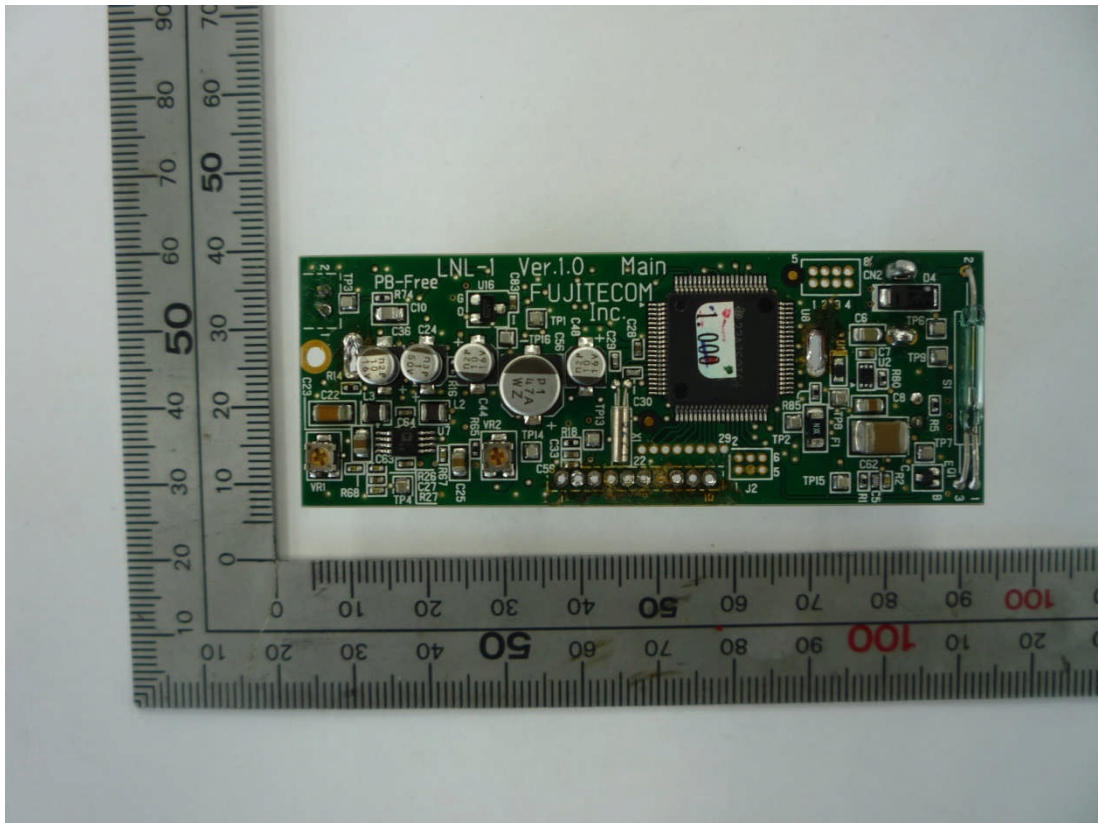
Remove battery from main PCB



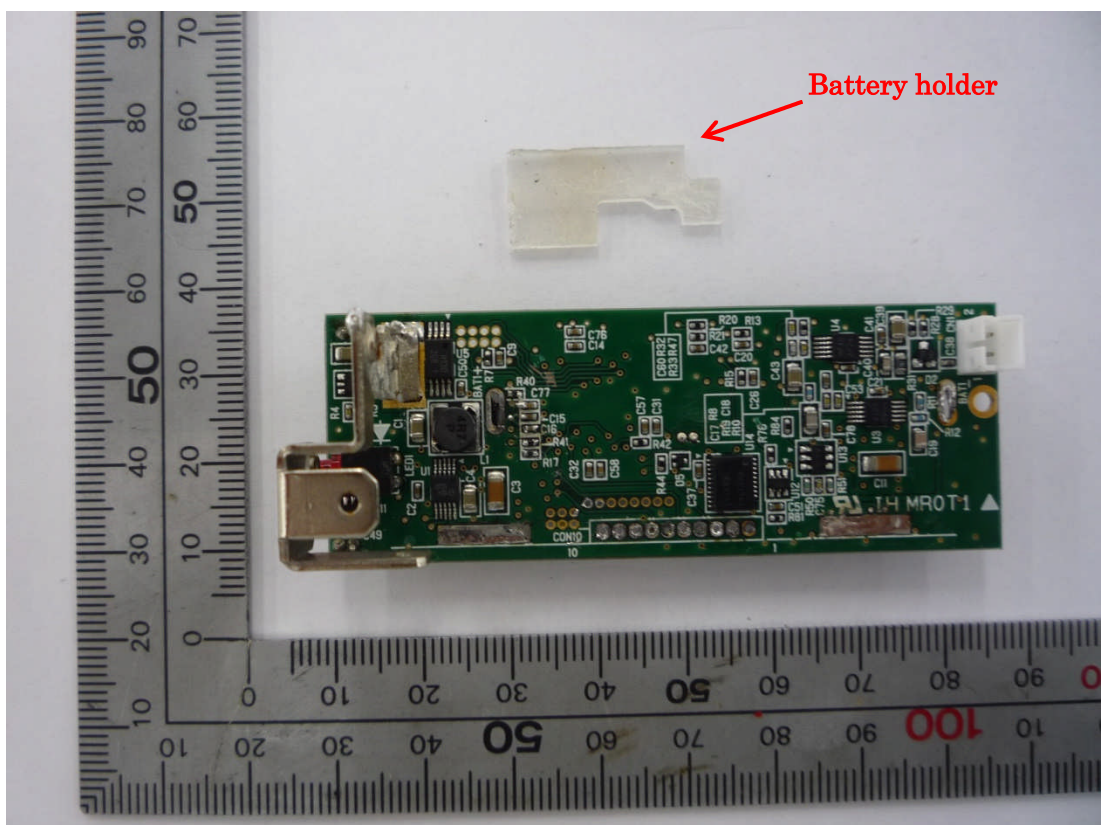
Remove RF module from main PCB



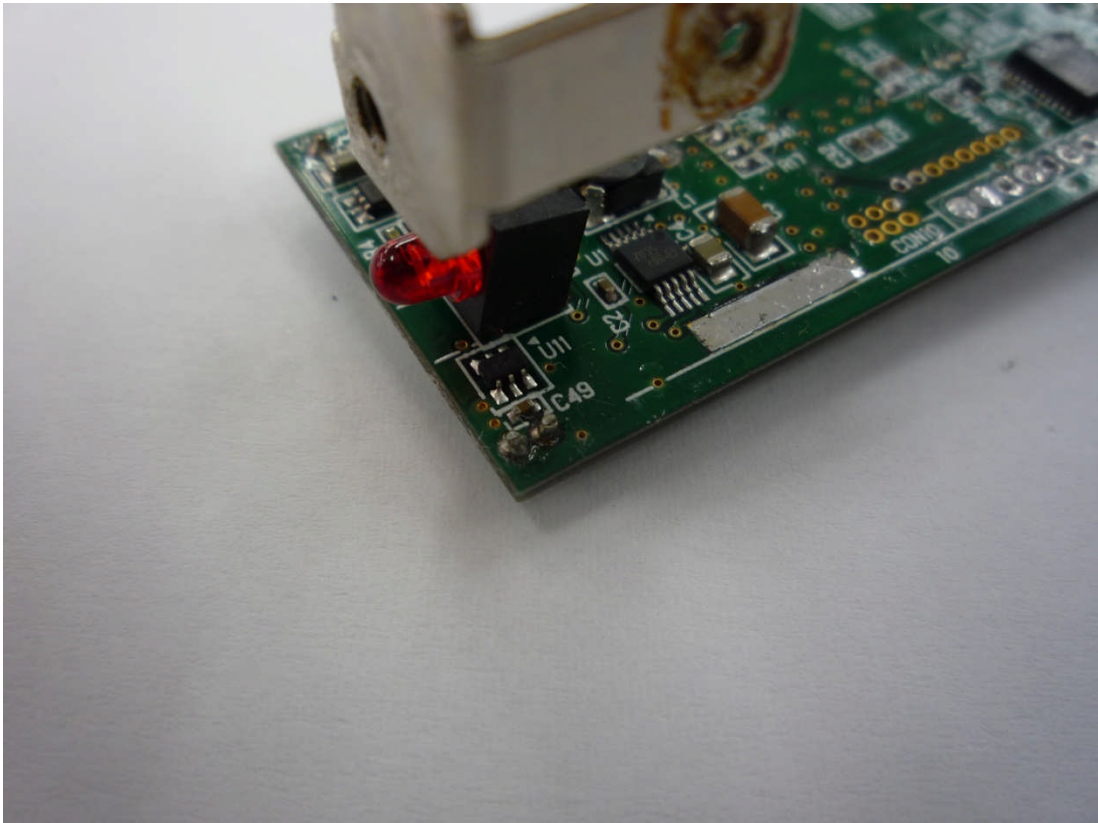
Remove antenna harness from main PCB



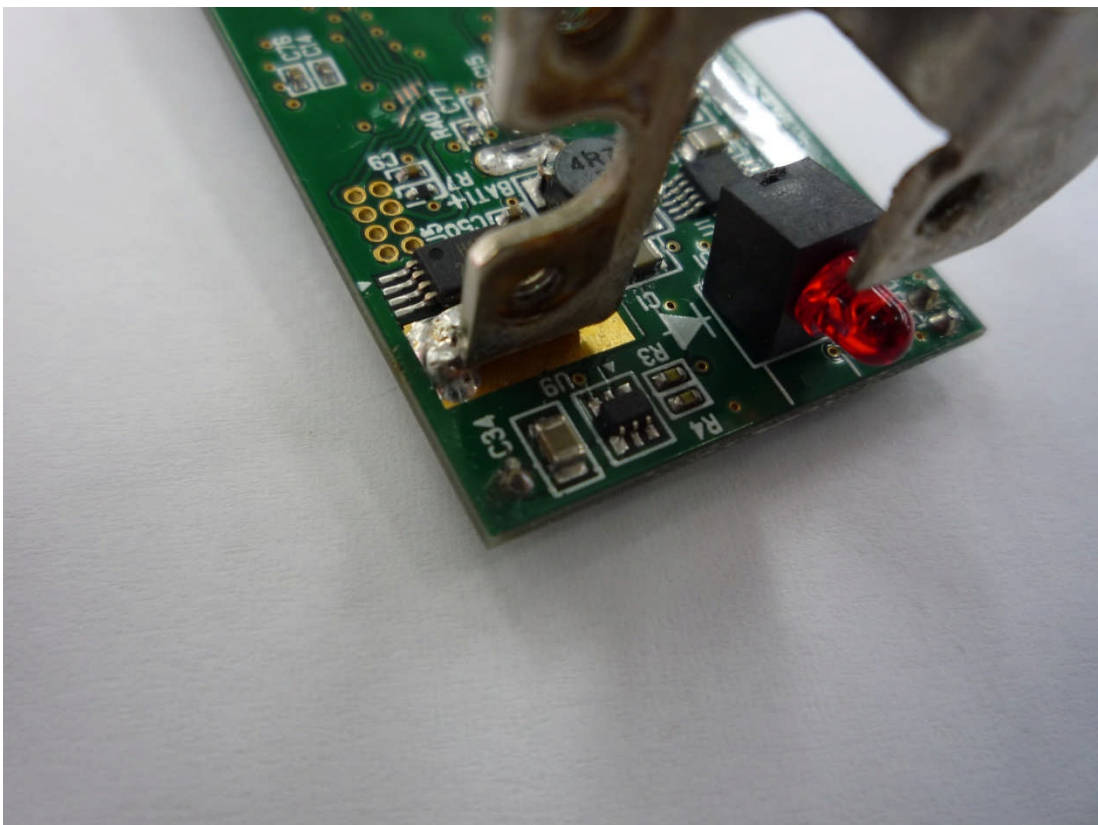
Top view of main PCB



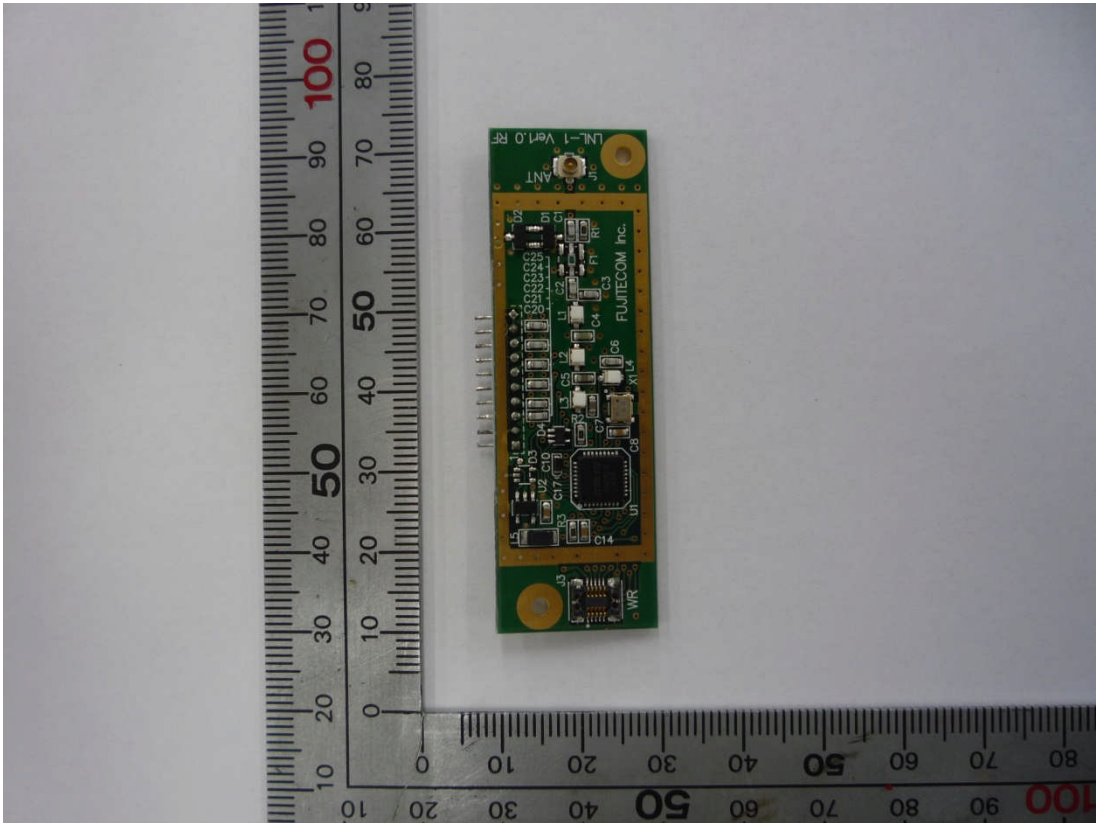
Bottom view of main PCB



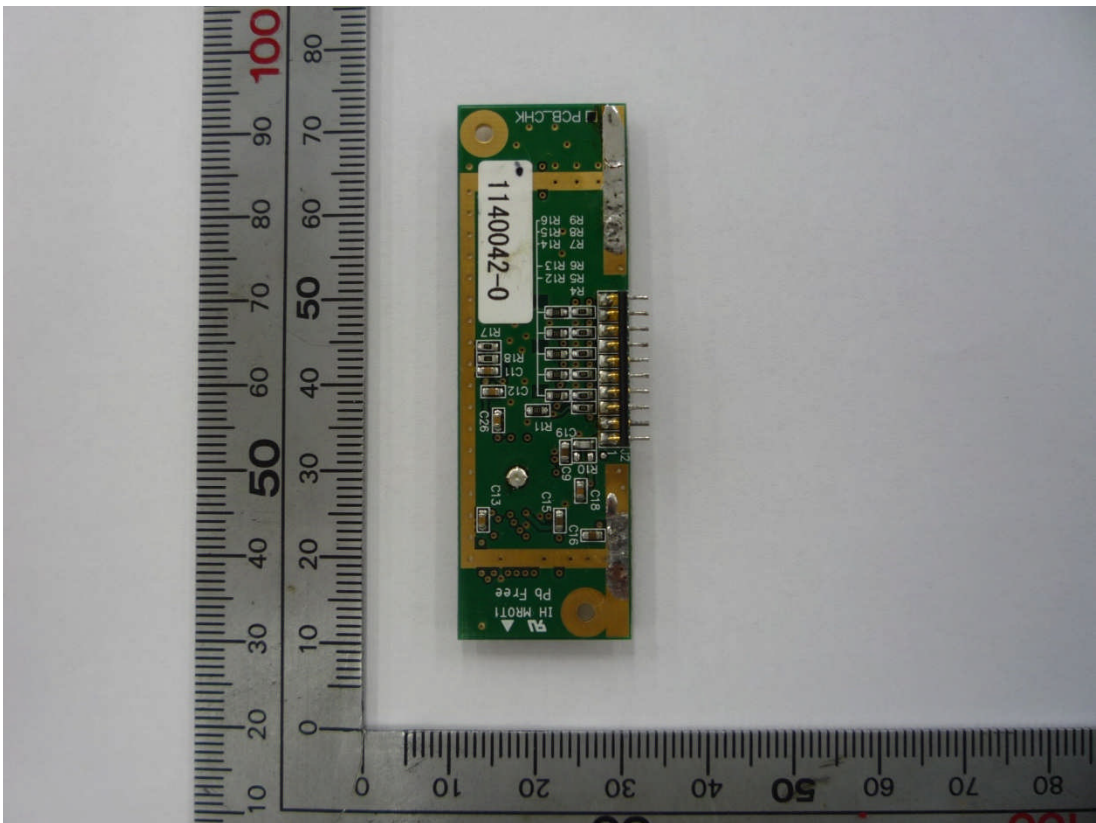
View of near antenna holder at main PCB



View of near LED at main PCB



Top view of RF module



Bottom view of RF module