



Adding a Bluetooth device

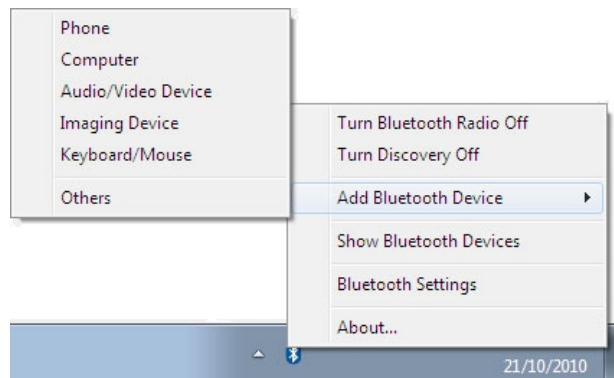
To add a Bluetooth device:

- [From the Notification area](#)
- [From My Bluetooth Devices](#)

Dependent on the device type, you can also connect to your computer from the remote device. See [Connecting from the remote device](#).

From the Notification area:

1. Ensure the device is turned on, has Bluetooth enabled and is discoverable.
2. In the Notification area, right-click the Bluetooth icon, select **Add Bluetooth Device** and choose the device type you want to add:



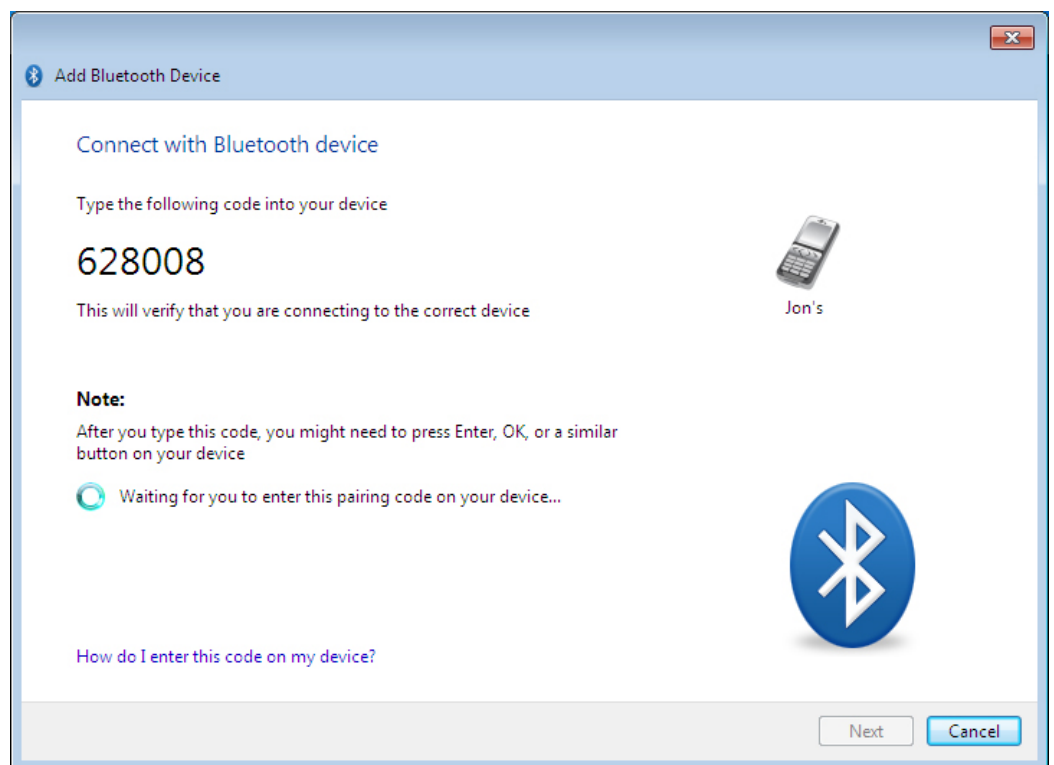
3. The **Add Bluetooth Device** window opens.

All discoverable Bluetooth devices of the chosen type, which are in range, will be displayed. Click on the device you want to connect to and click **Next**:

FCC Caution: Any changes or modifications not expressly approved by the party responsible for compliance could void the user's authority to operate this equipment. This device complies with Part 15 of the FCC Rules. Operation is subject to the following two conditions: (1) This device may not cause harmful interference, and (2) this device must accept any interference received, including interference that may cause undesired operation. This device and its antenna(s) must not be co-located or operating in conjunction with any other antenna or transmitter. NOTE: This equipment has been tested and found to comply with the limits for a Class B digital device, pursuant to Part 15 of the FCC Rules. These limits are designed to provide reasonable protection against harmful interference in a residential installation. This equipment generates, uses and can radiate radio frequency energy and, if not installed and used in accordance with the instructions, may cause harmful interference to radio communications. However, there is no guarantee that interference will not occur in a particular installation. If this equipment does cause harmful interference to radio or television reception, which can be determined by turning the equipment off and on, the user is encouraged to try to correct the interference by one or more of the following measures:-- Reorient or relocate the receiving antenna.-- Increase the separation between the equipment and receiver.-- Connect the equipment into an outlet on a circuit different from that to which the receiver is connected.-- Consult the dealer or an experienced radio/TV technician for help.

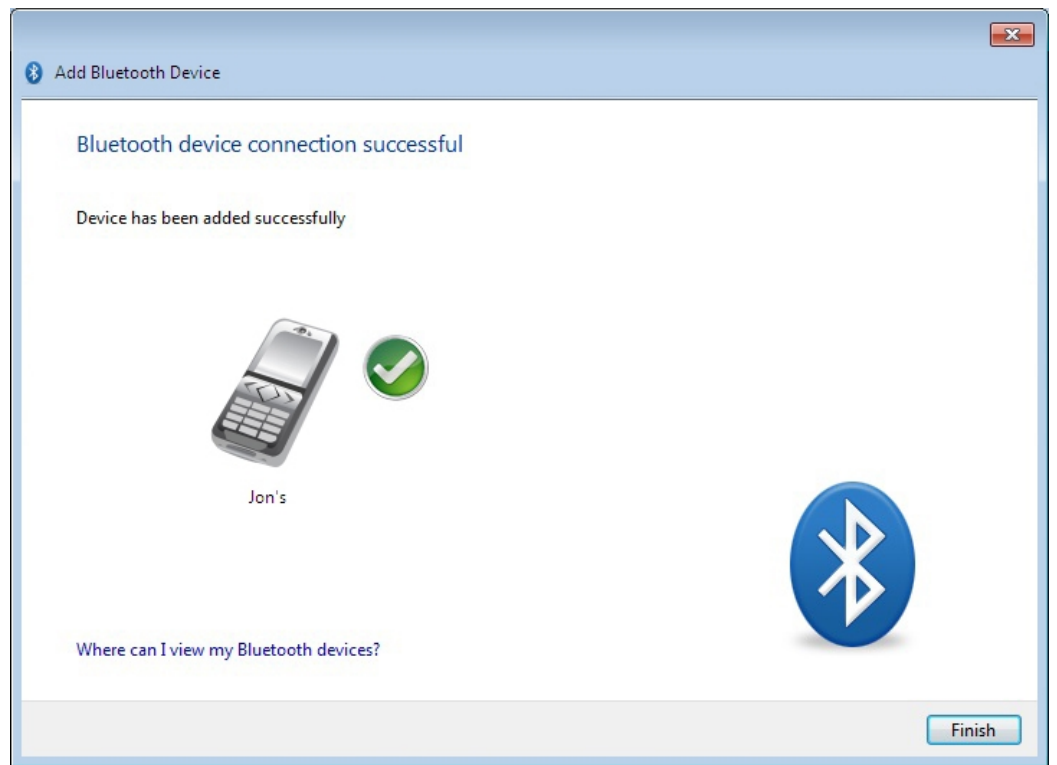
The device has been evaluated to meet general RF exposure requirement.
The device can be used in portable exposure condition without restriction.

4. You may be prompted to enter a pairing code on the device. The code may be entered on your phone handset using the number pad or using the device's keyboard. When prompted on your device, enter the pairing code:



If a pairing code is displayed on both your PC and the remote device, accept or confirm on both.

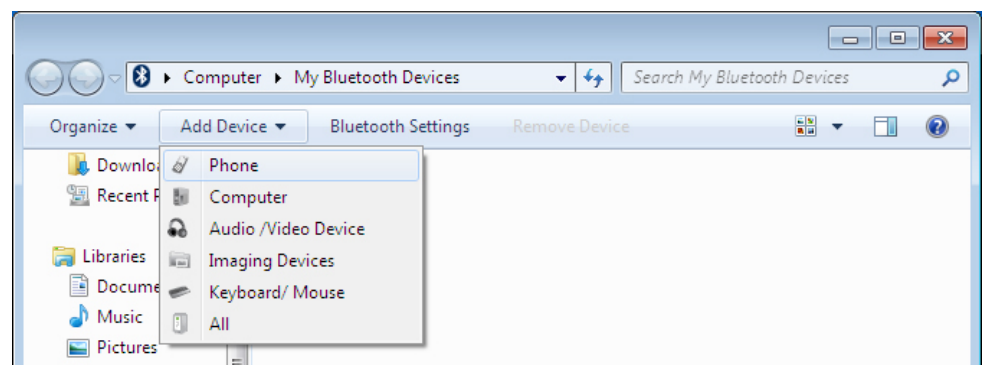
5. Click **Finish** to complete adding a Bluetooth device.



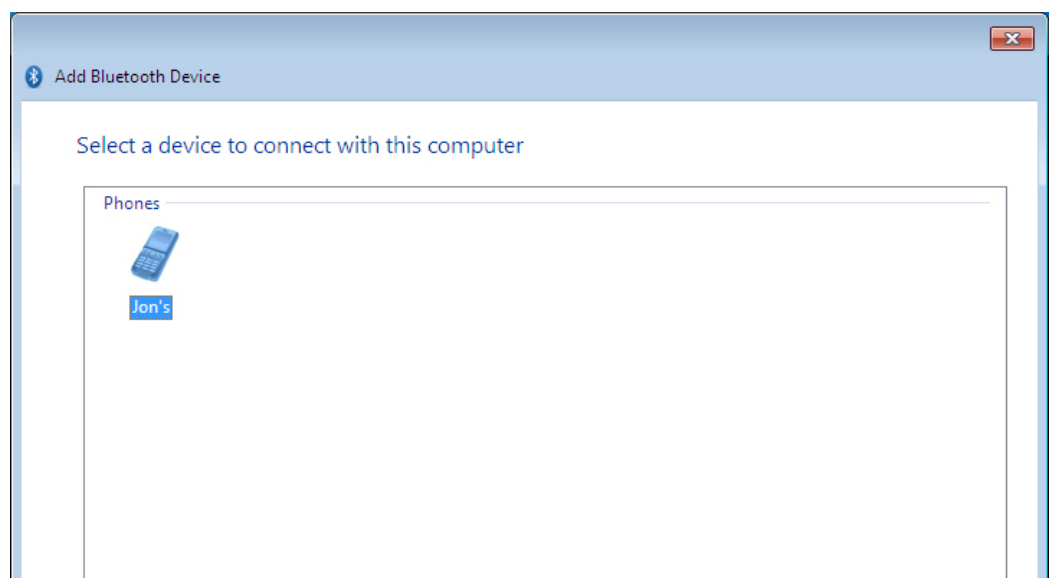
[Back to top](#)

From My Bluetooth Devices:

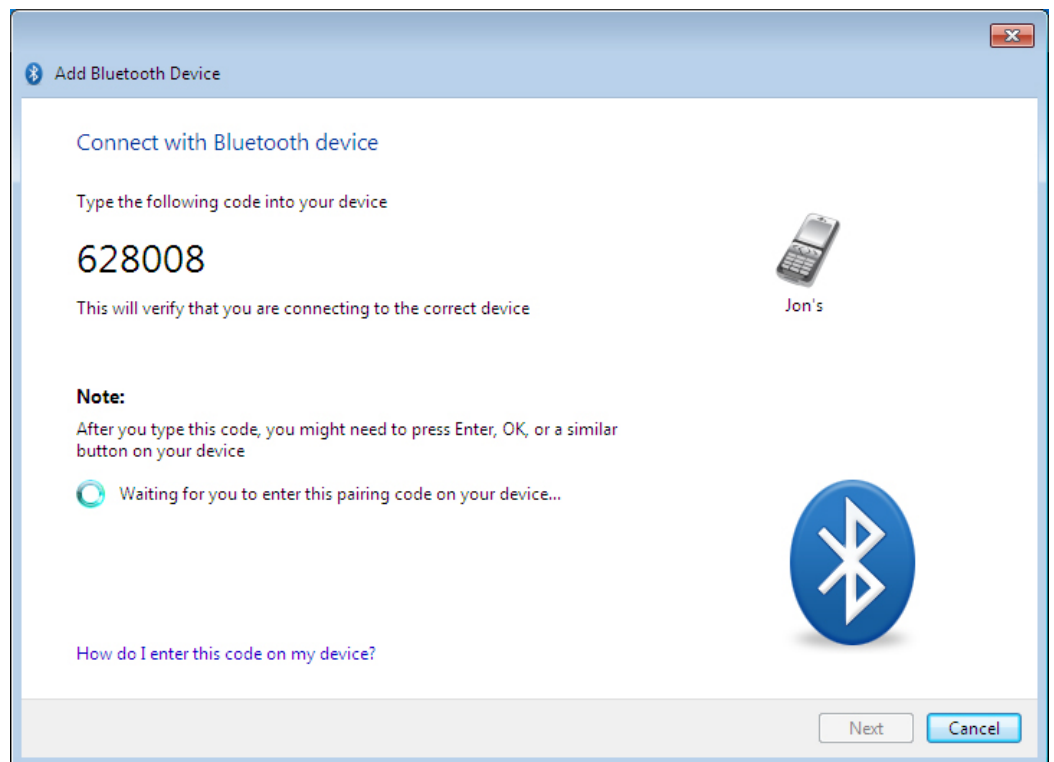
1. Ensure the device is turned on, has Bluetooth enabled and is discoverable.
2. In **My Bluetooth Devices**, click **Add Bluetooth Device** and choose the device type you want to add:



3. The **Add Bluetooth Device** window opens.
All discoverable Bluetooth devices of the chosen type, which are in range, will be displayed. Click on the device you want to connect to and click **Next**:

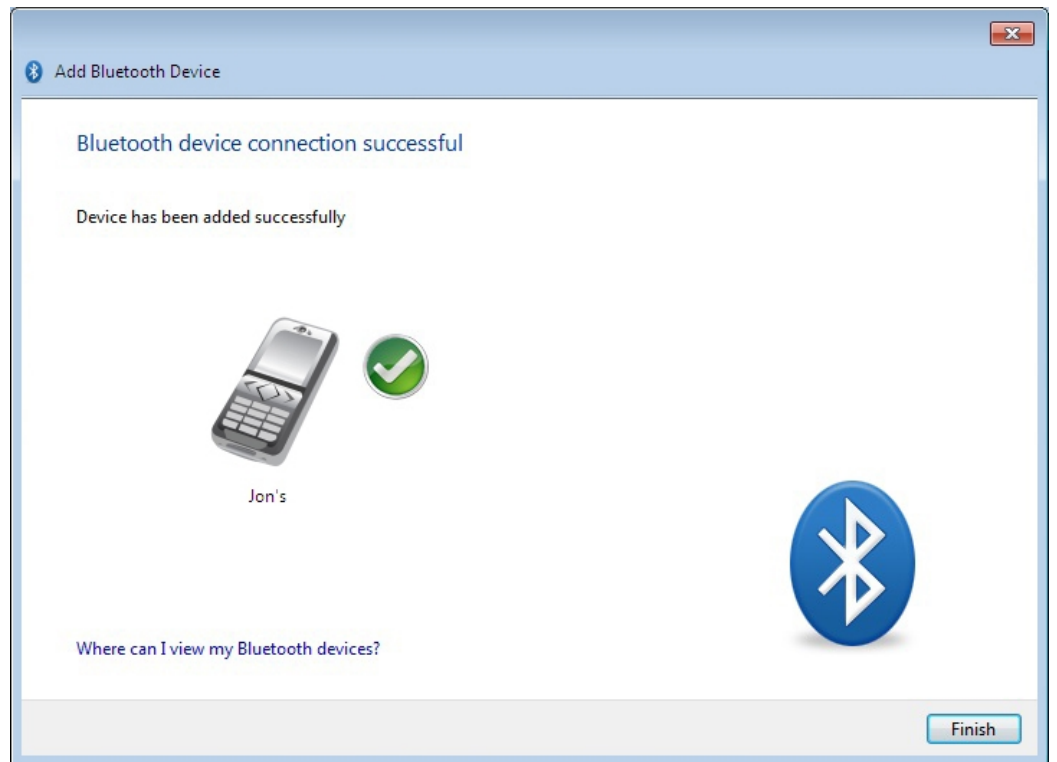


4. You may be prompted to enter a pairing code on the device. The code may be entered on your phone handset using the number pad or using the device's keyboard. When prompted on your device, enter the pairing code:



If a pairing code is displayed on both your PC and the remote device, accept or confirm on both.

5. Click **Finish** to complete adding a Bluetooth device.



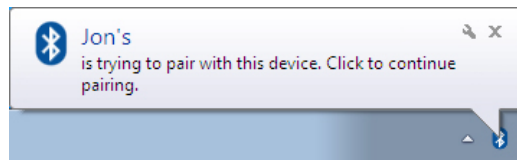
[Back to top](#)

Connecting from the remote device:

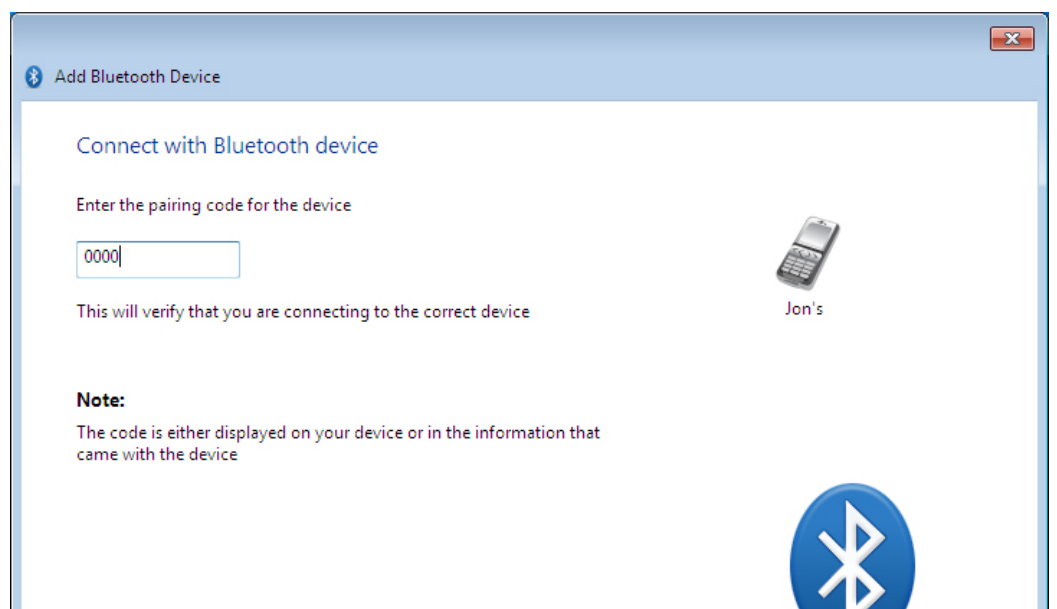
1. Ensure the device is turned on, has Bluetooth enabled and is discoverable.
2. Initiate pairing from the Bluetooth device. This will usually require you to create a pairing code on your device. In this example, the code "0000" is used.

Refer to the documentation that came with your device for more information about discovering other Bluetooth devices.

3. CSR Harmony will indicate your device is trying to connect to your computer, click it to allow the connection:

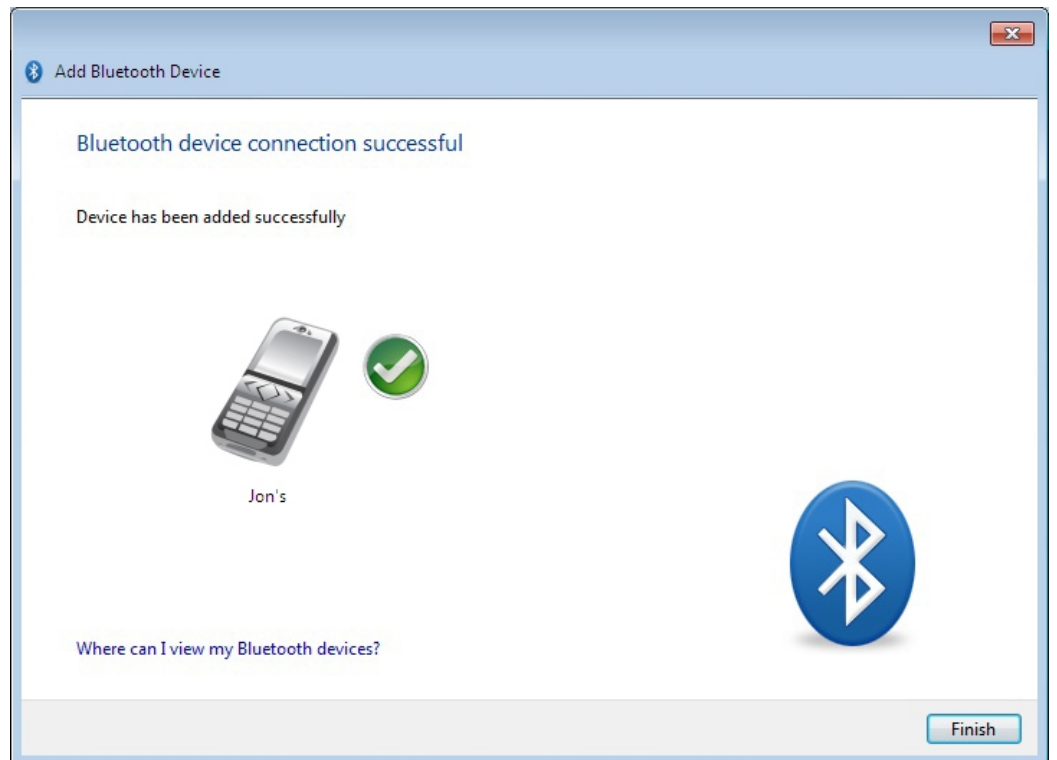


4. When prompted, enter the pairing code and click **Next**:



If a pairing code is displayed on both your PC and the remote device, accept or confirm on both.

5. Click **Finish** to complete adding a Bluetooth device.

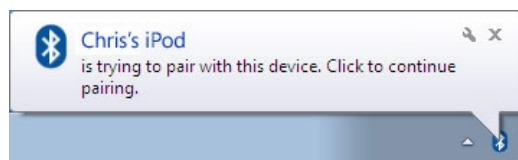


Using Secure Simple Pairing:

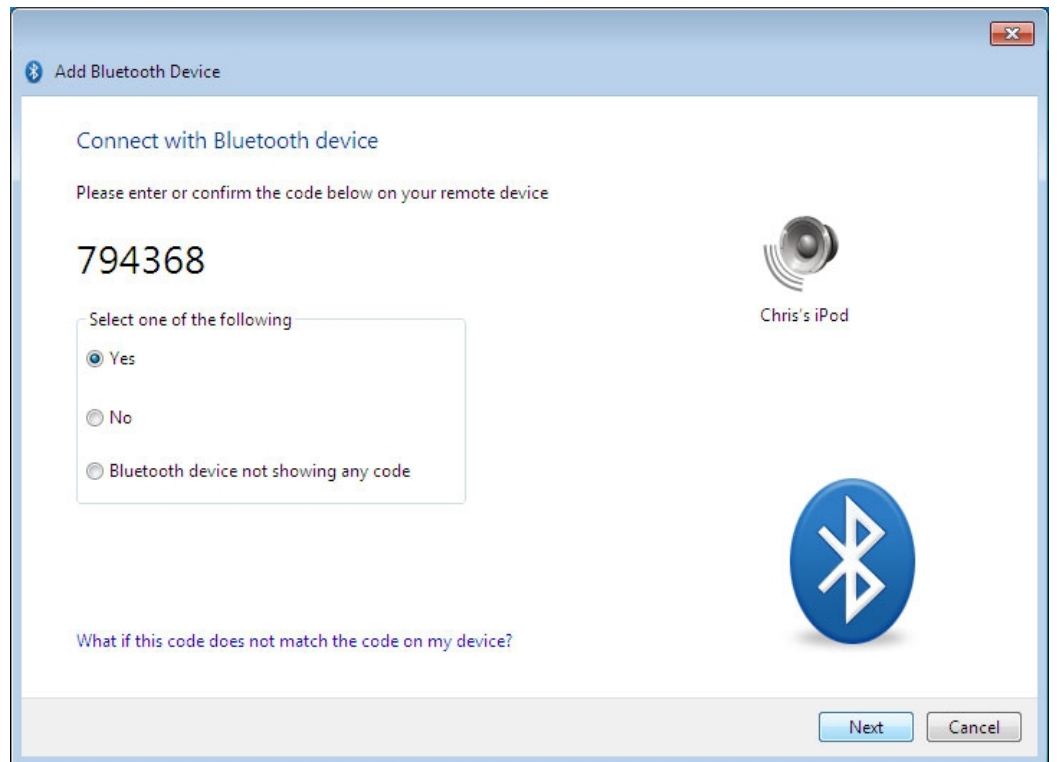
Secure simple pairing enables you to connect from a remote device where you are not required to enter a pairing code, but simply confirm one on your device.

If your device supports Secure Simple Pairing:

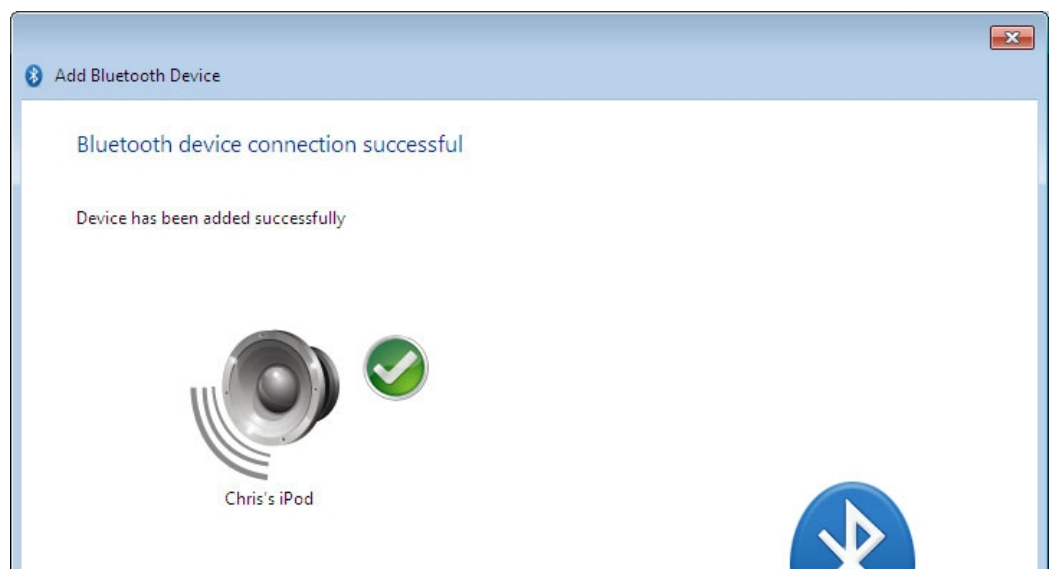
1. Initiate pairing from the Bluetooth device. CSR Harmony will indicate your device is trying to connect to your computer, click it to allow the connection:



2. A code is displayed on screen and on your device, all you need to do is confirm that the two codes are the same:



3. On your device, check and confirm that the codes are the same, then click **Next**.
4. Click **Finish** to complete adding a Bluetooth device.

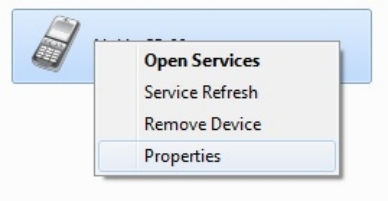


Automatically accepting connections

Automatic connection allows a device to re-connect without prompting for user action on future connections.

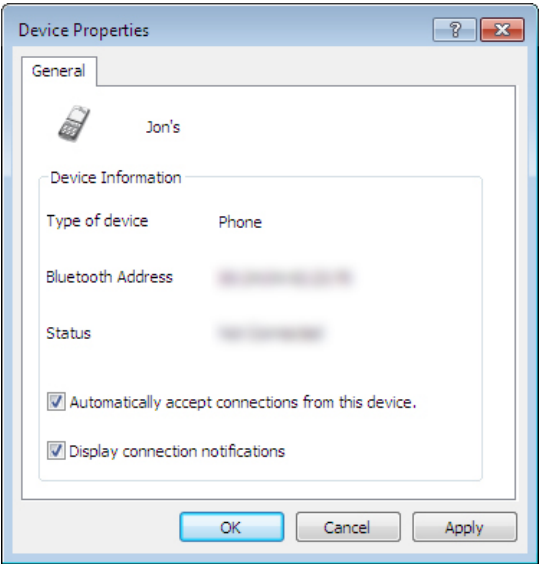
You can enable automatic connection on a known device by:

1. In **My Bluetooth Devices**, right-click the device and select **Properties**:





















2. The **Device Properties** window will open.

Tick the **Automatically accept connections from this device** box and click **Apply** or **OK**:



Bluetooth device icons

Icon	Description
	Laptop PC
	Desktop PC

	Personal Digital Assistant (PDA)
	Stereo Headset or Headphones
	Mono Headset
	Loudspeaker
	Camera
	Mouse
	Keyboard
	Gamepad or Game controller
	Modem
	Network Access Point
	Printer
	Mobile Phone
	Remote Control
	Bluetooth low energy security device
	Health Device, e.g. Weighing Scales or Heart-rate Monitor
	A device of unknown type or a device whose type could not be determined

[Back to top](#)