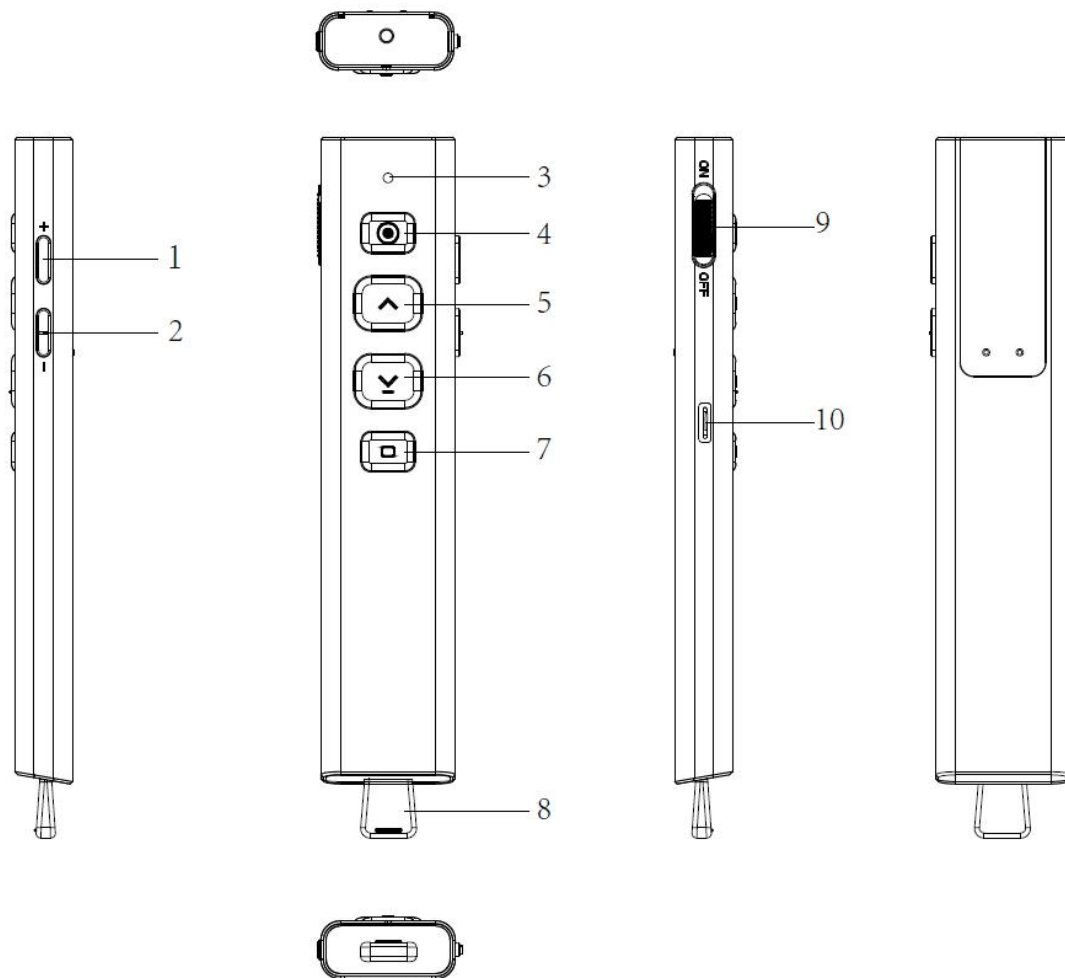


## Hawk 12-HDR250DL Quick Guide

Key functions :



	Buttons	Function description
1	+	Volume up
2	-	Volume down
3	LED	Red: working status ; Blue: charging status ; Red flashing : low battery  LED is off when full charged.

4	Mode	Double press to change modes: Spotlight, Magnifier, Digital laser. Long press: using the current mode
5	Page up	Turn to previous page
6	Page down	Turn to next page
7	Black screen/ Full screen	Short press: Full screen Long press: Black screen ( only under full screen )
8	Receiver	USB receiver
9	Power	Power on / off
10	Charging	USB-C Charging port

Get started on **Windows**:

1. Pull out the receiver, turn on the power
2. Plug the USB receiver to Computer USB port

It may takes few minutes waiting for computer's recognition when it is the first time in use

3. Install software

[http://www.hawk.asia/dom/down\\_list.php?username=szxhkdz&channel\\_id=15519709](http://www.hawk.asia/dom/down_list.php?username=szxhkdz&channel_id=15519709)

Download the software in above link.

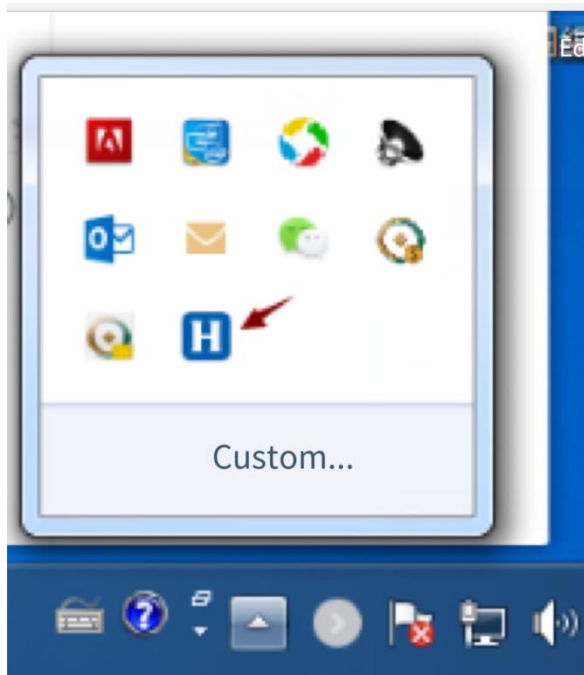
Software has 4 language supported (English, Japanese, Traditional Chinese, Simple Chinese,)

Double Click ( .exe) for auto installation. When the installation is done, you will



see            on desktop.

Double click H to activate. The H will stay under the bar



 blue means on.  grey means off

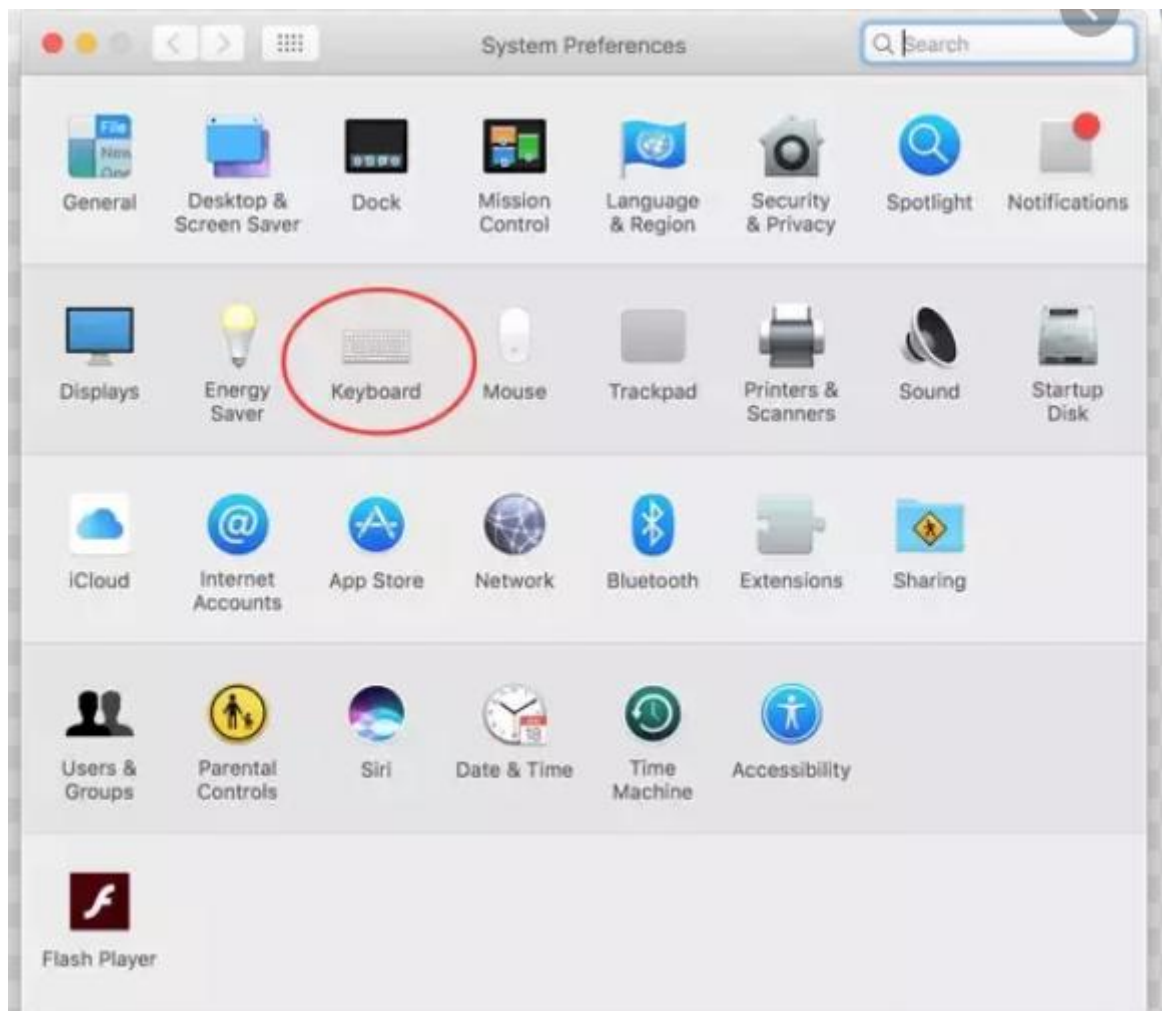
After USB receiver is plugged out of computer, it will turn grey.

Get started on **Mac**.

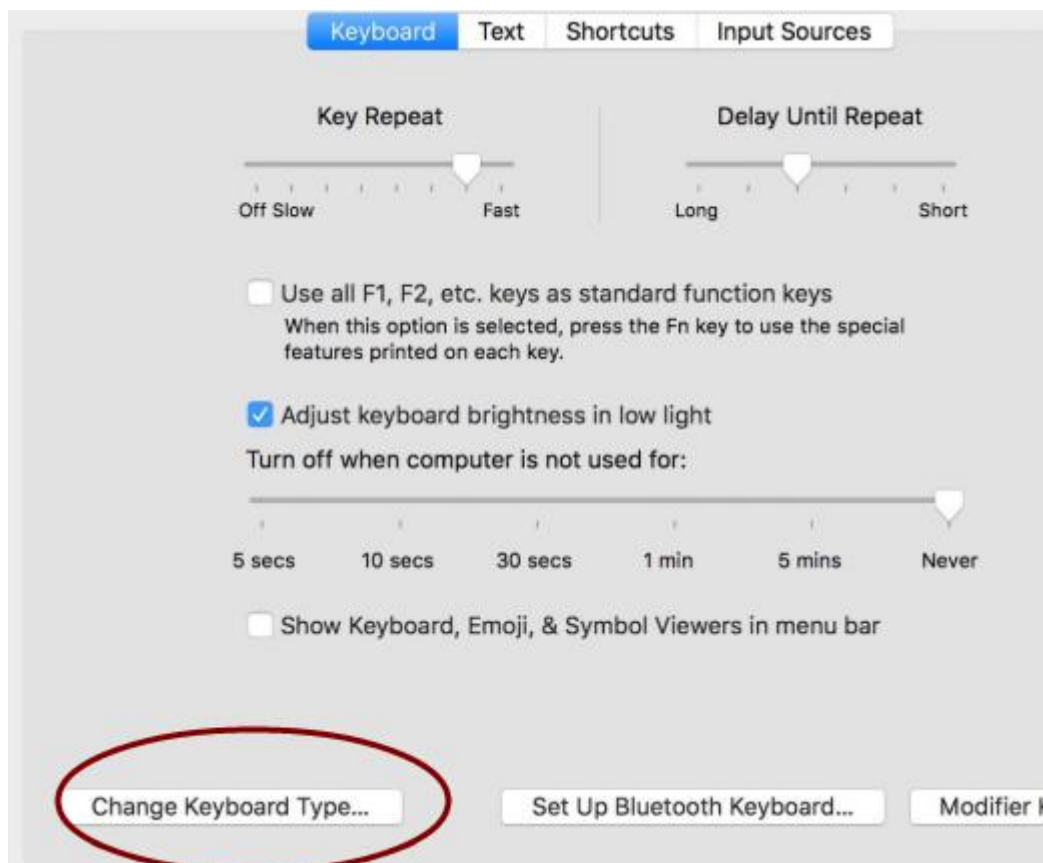
1. Pull out the receiver, turn on the power
2. Plug the USB receiver to Mac (you may need an external USB Hub )
3. Keyboard setting (only for the 1<sup>st</sup> time use)
  - a. Open system preferences



- b. Click keyboard



c. Click “change keyboard type”

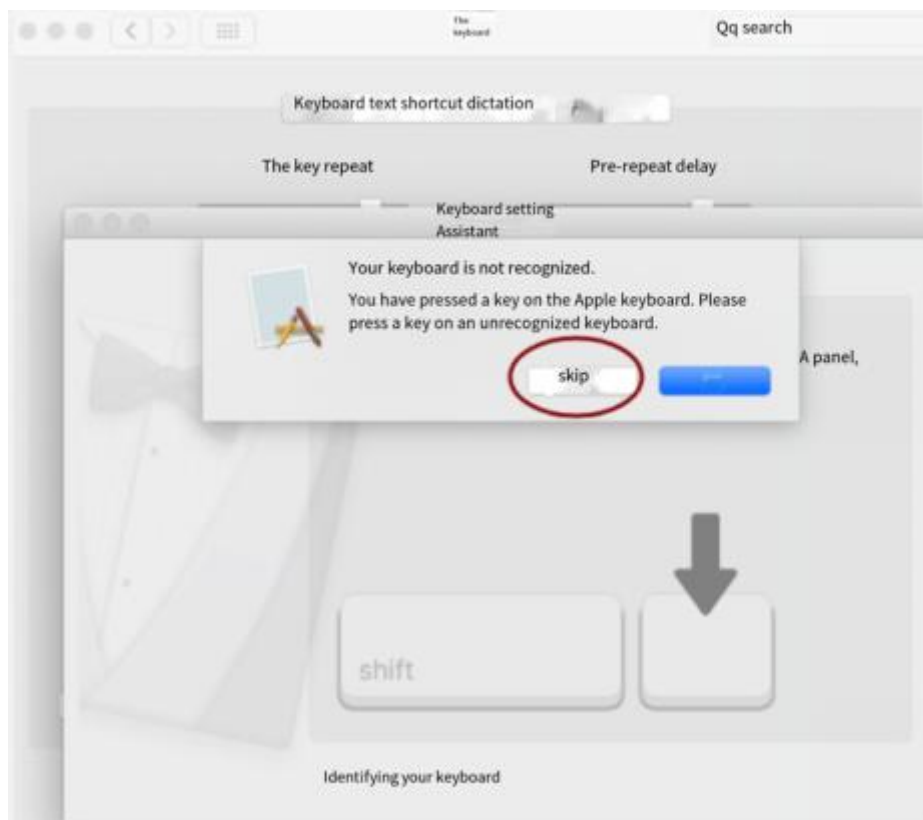


d. Click “continue”

e. Press the key next to left shift



f. Click “skip”



g. Select ANSI keyboard and complete

## Keyboard text shortcut dictation

The key repeat

Pre-repeat delay

Keyboard setting  
Assistant

### Select keyboard type

Select the keyboard type and click Finish. If you do not know the type of your keyboard, contact the manufacturer of your key and ask them to steal the type of keyboard

OJ's (Japan)

A standard Japanese keyboard with Japanese input mode keys

Iso (Europe) ISQIEC 9995  
standard keyboard

**O ANSI (USA and other countries)**

Standard 101-key or 102-key keyboards and certain other keyfish

return

complete

## Setting UI



When Calibration is needed, please locate the presenter on flat position. Press "up" and "down" at the same time till led blinks then release. After releasing, led will stop blinking. Calibration is done.



## FCC Requirement

changes or modifications not expressly approved by the party responsible for compliance could void the user's authority to operate the equipment.

This device complies with Part 15 of the FCC Rules. Operation is subject to the following two conditions:

(1) this device may not cause harmful interference, and

(2) this device must accept any interference received, including interference that may cause undesired operation.

Note: This equipment has been tested and found to comply with the limits for a Class B digital device, pursuant to Part 15 of the FCC Rules. These limits are designed to provide reasonable protection against harmful interference in a residential installation. This equipment generates, uses, and can radiate radio frequency energy, and if not installed and used in accordance with the instructions, may cause harmful interference to radio communications. However, there is no guarantee that interference will not occur in a particular installation. If this equipment does cause harmful interference to radio or television reception, which can be determined by turning the equipment off and on, the user is encouraged to try to correct the interference by one or more of the following measures:

- Reorient or relocate the receiving antenna.
- Increase the separation between the equipment and receiver.
- Connect the equipment into an outlet on a circuit different from that to which the receiver is connected.
- Consult the dealer or an experienced radio/TV technician for help.