



Wireless presenter R155

1. Introduction

Thank you for purchasing the **R155** Wireless Presenter. This device will come in handy when you need to stand out in the way you make your presentations. It features an ergonomic design, intuitive touch keys and a rubberized slip-resistant finish that will let you have complete control of your slide show. Its powerful red laser will efficiently highlight those important points of the presentation, within a range of up to 656 feet, so you have freedom to move around and interact with your audience. All you have to do is connect the USB receiver to your computer, turn on the presenter and get the job done professionally and efficiently.

Safety measures



LASER RADIATION. DO NOT STARE INTO THE BEAM OR VIEW DIRECTLY WITH OPTICAL INSTRUMENTS. CLASS 2 LASER PRODUCT. NEVER POINT A LASER BEAM INTO A PERSON'S EYES OR VIEW A LASER BEAM DIRECTLY, AS PROLONGED EXPOSURE CAN BE HAZARDOUS TO THE EYES. MOMENTARY EXPOSURE FROM A LASER POINTER, SUCH AS AN INADVERTENT SWEEP OF THE LIGHT ACROSS A PERSON'S EYES, MAY CAUSE TEMPORARY FLASH BLINDNESS SIMILAR TO THE EFFECT OF A CAMERA FLASH BULB. ALTHOUGH THIS CONDITION IS TEMPORARY, IT CAN BECOME MORE DANGEROUS IF THE EXPOSED PERSON IS ENGAGED IN A VISION CRITICAL ACTIVITY SUCH AS DRIVING.

Package content

Wireless presenter	
USB receiver	
AAA battery	
User's guide	

2. Main features

- Ideal for business slide shows, project proposals and PowerPoint presentations
- Integrated laser pointer brings focus and attention to the presentation
- Features a rubberized finish body with forward, backward, main screen and pointer buttons
- Compatible with Windows® 2003, XP, Vista, Windows 7-10, Mac OS, Linux and Android
- 2.4GHz RF with 360-degree control and wireless freedom of up to 656 feet*
- Embedded USB receiver with magnetic design for secure storage
- Plug and Play configuration; software driver is not required
- Complies with laser safety standards - it supports less than 1mW of power

*The remote operation distance is 50 feet.

3. System requirements

Hardware

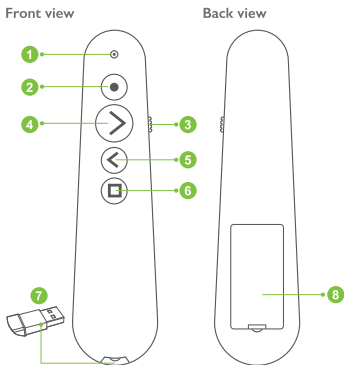
- USB Versions 1.1/ 2.0/ 3.0

Operating systems

- Windows® 2003, XP, Windows Vista, Windows 7-10
- Mac OS*
- Linux*
- Android*

* Certain limitations apply.

4. Product overview



1. LED indicator
2. Laser beam button
3. ON/OFF switch
4. Scroll forward button

5. Scroll backward button
6. Screen control button
7. USB receiver
8. Battery compartment

5. Description of functions

- 1. LED indicator:** The LED light turns red to indicate a key is being pressed and functioning.
- 2. Laser beam button:** Press it to activate the beam and direct the audience's attention to the portion you want it to focus on.
- 3. ON/OFF switch:** Use it to turn the presenter on or off.
- 4. Scroll forward button:** Use this button to go to the next slide.
- 5. Scroll backward button:** Press this button to go to the previous slide.
- 6. Screen control button (presentation):** Press this button briefly to enter the full screen mode (first slide), and press it again to exit this mode. Once in the full screen mode (end of slide show), press and hold this button to enter the black screen mode, press and hold it again to exit this mode.
- 7. USB receiver:** Connect the USB receiver to your computer to start using the pointer. It can be stowed in the presenter's bottom compartment or left connected into the USB port of your PC or laptop.
- 8. Battery compartment:** Insert a AAA battery in this compartment for the presenter to start working.

6. Connecting the presenter to the computer

1. Insert one AAA battery in the battery compartment.
2. Remove the USB receiver from the wireless presenter. Power on the presenter by sliding the on/off switch to its **ON** position.
3. Insert the USB receiver into the USB port of the PC or laptop.



4. Turn on your computer, if you have not done so already.

Note: The radio frequency (RF) codes are factory preset for your convenience; the presenter should be functional at this point.

5. No further configuration is necessary. Now you can start enjoying instant and trouble-free wireless connectivity to launch and manage your presentations seamlessly, from any spot in the room. Remember to put the USB receiver back into the wireless presenter, and turn off the device when you are not using it.

7. Troubleshooting

If the presenter fails to work as expected, first verify that the recommendations mentioned below have been followed:

- The USB receiver is correctly connected to the computer.
- The receiver is within communication range with the presenter (no more than 50 feet away, depending on location.)
- If the pointer is emitting the light beam, the receiver is recognized by the PC but the connection is not working, or the device is unable to control your PC, it is possible that the address code (driver) hasn't been loaded correctly in the receiver. Please follow these steps to solve the problem:
 - Open a PowerPoint file on your PC
 - Press and hold the scroll forward/backward button on the presenter
 - Turn OFF/ON the presenter while holding the backward button, until the PowerPoint presentation starts responding to the back/forward function. When this process finishes successfully it means communication has been established.

Note: If the presenter is not responding after completing the procedure mentioned above, the device needs to be returned to an authorized service dealer for repair.

Technical specifications

Device	R155
Type	Wireless presenter
Technology	2.4G
Laser distance	About 656ft
Remote operation distance	50ft
Laser Class	Class II
Laser power	<1mW
Working voltage (DC)	1.5V
Operating system compatibility	Windows2003, XP, Windows Vista, Windows 7-10, Mac OS, Linux, Android
Connectivity	
Connection type	Wireless
Wireless RF frequency	2.403GHz,2.45GHz,2.475GHz
Sensitivity	-96dBm
Wireless range	2.4-2.475GHz
USB receiver	
USB versions supported	USB Versions 3.0/2.0/1.1
Working voltage	4.5 - 5.5VDC
Dimensions	0.9x0.5x0.1in
Weight	0.1oz
Battery	
Battery type	AAA Type, 1.5VDC
Battery run time	15 hours
Battery standby time	3000 hours
Specifications	
Dimensions (LxWxH)	5.3x1.3x1in
Weight	1.1oz
Warranty	1 year

FCC statement

This equipment has been tested and found to comply with the limits for a Class B digital device, pursuant to part 15 of the FCC rules. These limits are designed to provide reasonable protection against harmful interference in a residential installation. This equipment generates, uses and can radiate radio frequency energy and, if not installed and used in accordance with the instructions, may cause harmful interference to radio communications. However, there is no guarantee that interference will not occur in a particular installation. If this equipment does cause harmful interference to radio or television reception, which can be determined by turning the equipment off and on, the user is encouraged to try to correct the interference by one or more of the following measures:

- Reorient or relocate the receiving antenna.
- Increase the separation between the equipment and receiver.
- Connect the equipment into an outlet on a circuit different from that to which the receiver is connected.
- Consult the dealer or an experienced radio/TV technician for help.

FCC Caution

Any changes or modifications not expressly approved by the party responsible for compliance could void the user's authority to operate this equipment.

This device complies with Part 15 of the FCC rules. Operation is subject to the following two conditions: (1) This device may not cause harmful interference, and (2) this device must accept any interference received, including interference that may cause undesired operation.

8. Disposal

Electrical and electronic products must not be discarded as regular household waste! As part of the company's eco-friendly approach, we encourage you to follow all applicable local waste regulations to dispose of your used electronics properly.



FCC Requirement

changes or modifications not expressly approved by the party responsible for compliance could void the user's authority to operate the equipment.

This device complies with Part 15 of the FCC Rules. Operation is subject to the following two conditions:

- (1) this device may not cause harmful interference, and
- (2) this device must accept any interference received, including interference that may cause undesired operation.

Note: This equipment has been tested and found to comply with the limits for a Class B digital device, pursuant to Part 15 of the FCC Rules. These limits are designed to provide reasonable protection against harmful interference in a residential installation. This equipment generates, uses, and can radiate radio frequency energy, and if not installed and used in accordance with the instructions, may cause harmful interference to radio communications. However, there is no guarantee that interference will not occur in a particular installation. If this equipment does cause harmful interference to radio or television reception, which can be determined by turning the equipment off and on, the user is encouraged to try to correct the interference by one or more of the following measures:

- Reorient or relocate the receiving antenna.
- Increase the separation between the equipment and receiver.
- Connect the equipment into an outlet on a circuit different from that to which the receiver is connected.
- Consult the dealer or an experienced radio/TV technician for help.