

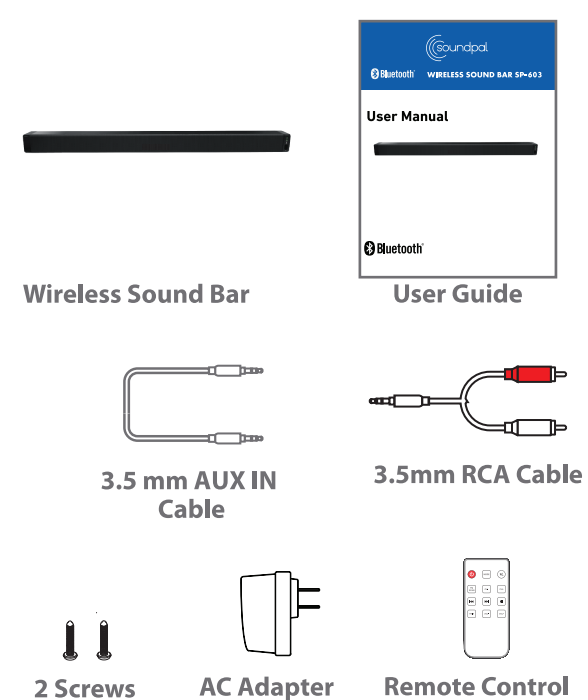


Bluetooth WIRELESS SOUND BAR SP-603

User Manual



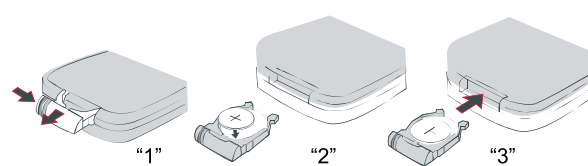
In the box



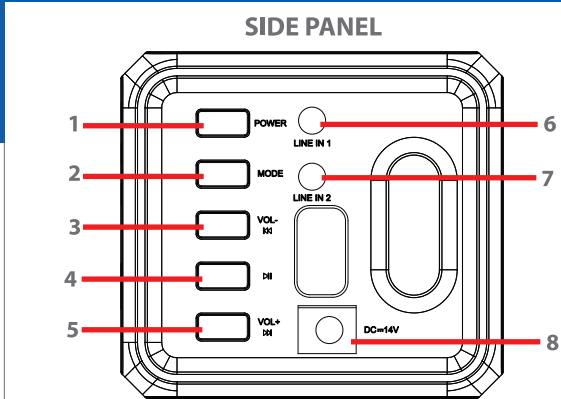
Installing the battery

The battery for the remote control (1 CR2025 Lithium Battery) is included. To replace the battery, push and slide out the battery door on the remote control. Replace the battery with a new CR2025 battery with the positive (+) polarity facing up. Slide the battery door back in to the remote control.

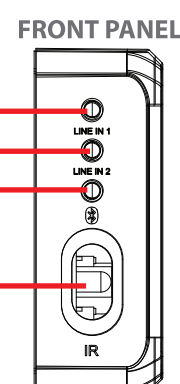
NOTE: The soundpal remote is packaged with a plastic protection tab. Before operating the remote, gently pull the protective tab extending out of the remote control's battery door.



Location of controls

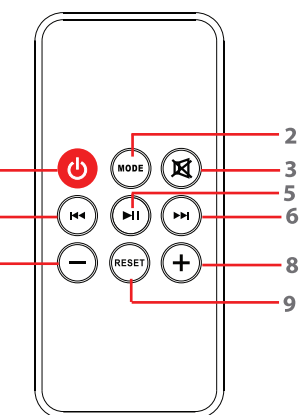


- [POWER] button: Power ON/OFF
- [MODE] button: AUX IN, Bluetooth
- [VOL- \llcorner] button:
 - decrease volume
 - skip to previous track
- [||] button: Play/pause music
- [VOL+ \lrcorner] button:
 - increase button
 - skip to next track
- LINE IN 1: AUX IN jack
- LINE IN 2: AUX IN jack
- DC14V IN jack



- LINE IN 1 LED indicator light
- LINE IN 2 LED indicator light
- Bluetooth LED indicator light
- Infrared sensor

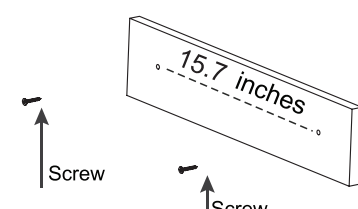
REMOTE CONTROL



- [\odot] key: Standby Power ON/OFF
- [MODE] key: Switch modes: AUX IN, Bluetooth
- [\boxtimes] key: Mute volume
- [\llcorner] key: Skip to previous track
- [||] key: Play/pause music
- [\lrcorner] key: Skip to next track
- [-] key: Decrease volume
- [RESET] key: Restore settings
- [+] key: Increase volume

Mounting the speaker

- Measure a width of 15.7 inches on the wall.
- Mark the position of the mounting screws on the wall using a pencil.
- Drill the supplied screws directly into the marks that you have made on the wall and leave approximately 0.3 inch length to hook the Wireless Sound Bar.
- Put the Wireless Sound Bar onto the mounting screws. Make sure they are firm and stable.

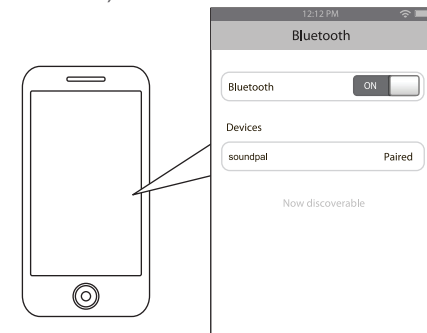


Pairing the speaker with a Bluetooth enabled device

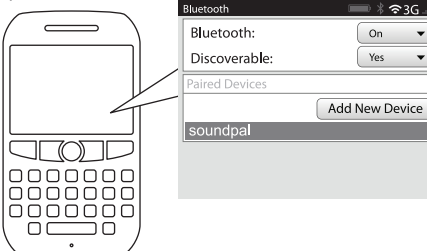
- Connect the AC power cord into a wall socket.
- Turn the speaker on by pressing the [POWER] button on the speaker or remote control.
- Press the [MODE] Button on the speaker or remote control to enter Bluetooth Mode. A tone is heard and the Bluetooth LED indicator light will flash quickly.
- Keep the speaker and your Bluetooth enabled device within three feet of each other during the pairing process.
- Set your mobile phone or other Bluetooth enabled device to search for compatible Bluetooth devices.

i If there are no paired devices in range when the speaker is turned on, it will go into pairing mode automatically. If a paired device is in range, the speaker will connect to it automatically.

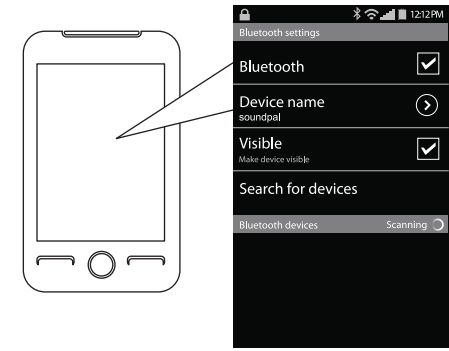
On an iPhone
Go to SETTINGS > BLUETOOTH (Make sure Bluetooth is turned ON)



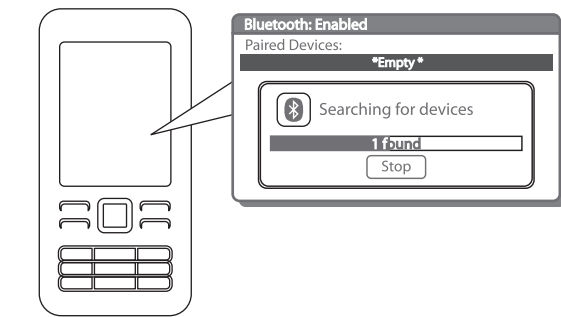
On a BlackBerry
Go to SETTINGS/OPTIONS > BLUETOOTH
Enable BLUETOOTH (Make sure Bluetooth is turned ON)



On an Android Phone
Go to SETTINGS > BLUETOOTH > MENU > Search for devices (Make sure Bluetooth is turned ON)



On other Cell Phones/Devices
Review the instruction manual that came with your phone/device.



- When your Bluetooth enabled device finds the speaker, select "soundpal" from the list of found devices.
- If required, enter the password 0000 (four zeros). Select OK or YES to pair the two units.
- A tone will sound indicating a successful pairing. The Bluetooth LED indicator light will remain solid, indicating that you are now connected.

NOTE: If you would like to connect the speaker to another device, you must disconnect the speaker from the currently paired device first. On your device's Bluetooth settings, select "soundpal", then select "disconnect" or "unpair". When the speaker has been unpaired, repeat the pairing process.

i The screenshots above are typical of many Bluetooth enabled devices in the market today, and are used to assist in the explanation of the pairing process. Your Bluetooth enabled device's interface and interaction with the speaker may differ slightly from the illustrations shown.

Using the speaker

Powering ON/OFF
Turn the speaker ON and OFF by pressing the [POWER] button on the unit or the [\odot] key on the remote.

Adjusting the volume
Quick press the [VOL+ \lrcorner] button on the speaker or the [+] key on the remote control to increase the volume.
Quick press the [VOL- \llcorner] button on the speaker or the [-] key on the remote control to decrease the volume.
Press the [\boxtimes] button on the remote control to mute the sound. Press again to turn the sound back on.

i You can also adjust the volume from your connected device's volume control.

Switching modes
Press the [MODE] button on the speaker or the remote control repeatedly to switch between Bluetooth and LINE IN modes.

Playing music

Playing music wirelessly
To enjoy listening to music wirelessly on your Wireless Speaker Bar, make sure you are connected to a Bluetooth enabled device. Once connected, press PLAY on your Bluetooth device. After playback starts, you can control the music with your connected device or the buttons of the Bluetooth speaker (with devices that have the AVRCP Bluetooth profile).

Play/Pause
Quick press the [||] button on the speaker or the remote control to pause the music. To resume music playback, quick press the [\lrcorner] button again.

Skipping Songs
Quick press the [VOL- \llcorner] button on the speaker or the [\llcorner] key on the remote control to skip to the previous song.
Quick press the [VOL+ \lrcorner] button to on the speaker or the [\lrcorner] key on the remote control to skip to the next song.

Adjusting the volume
Quick press the [VOL+ \lrcorner] button on the speaker or the [+] key on the remote control to increase the volume.
Quick press the [VOL- \llcorner] button on the speaker or the [-] key on the remote control to decrease the volume.
Press the [\boxtimes] button on the remote control to mute the sound. Press again to turn the sound back on.

Using as a wired speaker

- Turn the speaker on.
- Press the [MODE] button on the speaker or remote control until the LINE IN 1 or LINE IN 2 LED indicator light turns green.
- Connect one end of the included 3.5mm auxiliary cable or the small end of the RCA cable to one of the LINE IN ports on the side of the speaker.
- Connect the other end of the 3.5 auxiliary cable to an external device's headphone jack (smartphone, tablet or MP3 player); or the red and white ends of the RCA cable to external speakers.
- Open a media player on your device and press PLAY to start playing your music.
- Use the controls on your connected device to control music playback and volume.

Troubleshooting tips

i My Bluetooth Device is not able to pair with the Wireless Speaker Bar.

- Make sure the Wireless Speaker Bar is turned ON before beginning the pairing process.
- Keep the Wireless Speaker Bar and Bluetooth enabled device within 3 feet of each other during the pairing process.
- Press the [MODE] Button on the speaker or remote control to enter Bluetooth Mode. A tone is heard and the Bluetooth LED indicator light flashes blue quickly.
- Check that YOUR device's Bluetooth feature is turned ON.
- Try repeating the pairing process. Refer to "Pairing the Speaker with a Bluetooth Enabled Device."

i I can pair the Wireless Speaker Bar with my Bluetooth device, but I cannot hear any music.

- Make sure your Bluetooth device supports A2DP profile.
- Turn up the volume on your Bluetooth device.
- You may have to unpair the speaker, then re-pair to your device.

i I cannot get the Wireless Speaker Bar into Pairing Mode.

- Make sure the Wireless Speaker Bar is turned ON before beginning the pairing process.
- Press the [MODE] Button on the speaker or remote control to enter Bluetooth Mode. A tone is heard and the Bluetooth LED indicator light flashes quickly.
- The speaker is now in pairing mode.

Safety instructions

- Read these instructions.
- Keep these instructions.
- Heed all warnings.
- Follow all instructions.
- Do not use this apparatus near water.
- Clean only with a dry cloth.
- Do not block any ventilation openings. Install in accordance with the manufacturer's instructions.
- Do not install near any heat sources such as radiators, heat registers, stoves, or other apparatus (including amplifiers) that produce heat.
- Do not defeat the safety purpose of the polarized or grounding-type plug. A polarized plug has two blades with one wider than the other. A grounding type plug has two blades and a third grounding prong. The wide blade or the third prong are provided for your safety. When the provided plug does not fit into your outlet, consult an electrician for replacement of the obsolete outlet.
- Protect the power cord from being walked on or pinched particularly at plugs, convenience receptacles, and the point where they exit from the apparatus.
- Only use attachments/accessories specified by the manufacturer.
- Use only with a cart, stand, tripod, bracket, or table specified by the manufacturer, or sold with the apparatus. When a cart is used, use caution when moving the cart/apparatus combination during lightning storms or when unused for long periods of time.



- Unplug the apparatus during lightning storms or when unused for long periods of time.
- Refer all servicing to qualified service personnel. Servicing is required when the apparatus has been damaged in any way, such as power-supply cord or plug is damaged; liquid has been spilled or objects have fallen into the apparatus; the apparatus has been exposed to rain or moisture, does not operate normally, or has been dropped.
- WARNING: The mains plug is used as a disconnect device; the disconnect device shall remain readily operable.
- WARNING: To reduce the risk of fire or electric shock, do not expose this apparatus to rain or moisture. The apparatus shall not be exposed to dripping or splashing, and objects filled with liquids, such as vases, shall not be placed on apparatus.
- This equipment is a Class II or double insulated electrical appliance. It has been designed in such a way that it does not require a safety connection to electrical earth.



! The lightning flash with arrowhead symbol, within an equilateral triangle, is intended to alert the user of the presence of uninsulated "dangerous voltage" within the product's enclosure that may be sufficient to cause electric shock. The exclamation point within an equilateral triangle is intended to alert the user to the presence of important operating and maintenance (servicing) instructions in the literature accompanying the appliance.

Additional warnings and precautions

Battery shall not be exposed to excessive heat such as sunshine, fire or the like. Danger of explosion if battery is incorrectly replaced. Replace only with the same or equivalent type.

CAUTION: TO PREVENT ELECTRIC SHOCK, MATCH WIDE BLADE OF PLUG TO WIDE SLOT. FULLY INSERT.

CAUTION: Use of controls or adjustments or performance of procedures other than those specified may result in hazardous radiation exposure.

WARNING: Changes or modifications to this unit not expressly approved by the party responsible for compliance could void the user's authority to operate the equipment.

WARNING: Do not place this unit directly onto furniture surfaces with any type of soft, porous, or sensitive finish. As with any rubber compound made with oils, the feet of this unit may cause marks or staining where they reside. We recommend using a protective barrier such as a cloth or a piece of glass between the unit and the surface to reduce the risk of damage and/or staining.

WARNING: Use of this unit near fluorescent lighting may cause erratic behavior regarding use of the remote. If the unit is displaying such behavior move away from any fluorescent lighting, as it may be the cause.

WARNING: Shock hazard - Do Not Open.

WARNING: TO REDUCE THE RISK OF ELECTRIC SHOCK, DO NOT REMOVE COVER (OR BACK). NO USER-SERVICEABLE PARTS INSIDE. REFER SERVICING TO QUALIFIED SERVICE PERSONNEL.

Legal information

Caution: Any changes or modifications not expressly approved could void the user's authority to operate the equipment.

Note: This equipment has been tested and found to comply with the limits for a Class B digital device, pursuant to part 15 of the FCC Rules. These limits are designed to provide reasonable protection against harmful interference in a residential installation. This equipment generates, uses and can radiate radio frequency energy and, if not installed and used in accordance with the instructions, may cause harmful interference to radio communications. However, there is no guarantee that interference will not occur in a particular installation. If this equipment does cause harmful interference to radio or television reception, which can be determined by turning the equipment off and on, the user is encouraged to try to correct the interference by one or more of the following measures:

- Reorient or relocate the receiving antenna.
- Increase the separation between the equipment and receiver.
- Connect the equipment into an outlet on a circuit different from that to which the receiver is connected.
- Consult the dealer or an experienced radio/TV technician for help.