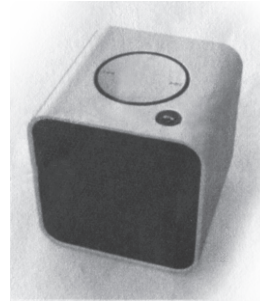


Specifications

Bluetooth Version	V5.0 + EDR
Dimension	6X6X5cm
Weight	8.3 OZ
Working Range	~ 33'
Output Power	3W
Frequency Response	280Hz – 16kHz
Signal to Noise	~95db
Battery Capacity	450 mHA

Bluetooth Speaker

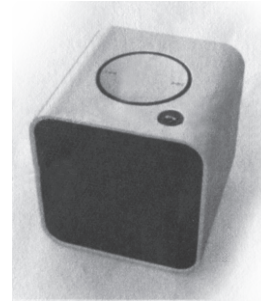


User's Manual

Specifications

Bluetooth Version	V5.0 + EDR
Dimension	6X6X5cm
Weight	8.3 OZ
Working Range	~ 33'
Output Power	3W
Frequency Response	280Hz – 16kHz
Signal to Noise	~95db
Battery Capacity	450 mHA

Bluetooth Speaker

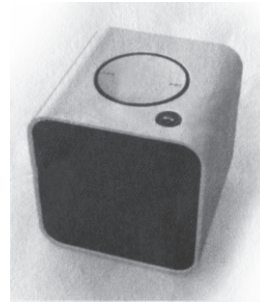


User's Manual

Specifications

Bluetooth Version	V5.0 + EDR
Dimension	6X6X5cm
Weight	8.3 OZ
Working Range	~ 33'
Output Power	3W
Frequency Response	280Hz – 16kHz
Signal to Noise	~95db
Battery Capacity	450 mHA

Bluetooth Speaker

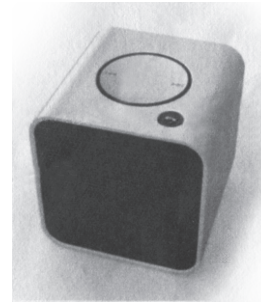


User's Manual

Specifications

Bluetooth Version	V5.0 + EDR
Dimension	6X6X5cm
Weight	8.3 OZ
Working Range	~ 33'
Output Power	3W
Frequency Response	280Hz – 16kHz
Signal to Noise	~95db
Battery Capacity	450 mHA

Bluetooth Speaker



User's Manual

Thank you for choosing our BT-Speaker stereo bluetooth speaker. Please carefully review the following instructions before operating the Unit.

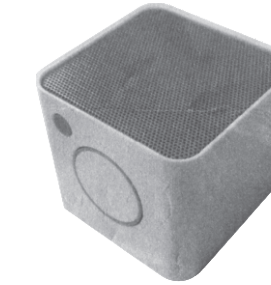
Pairing

1. Recharge the speaker first or connect the speaker to a USB charging port if necessary
2. Turn on the speaker.
3. Activate the bluetooth connectivity on your device.
4. Select "BT-Speaker" from the device list when your device completes bluetooth scanning
5. Enter the code issued by your device (may not applicable for some devices)
6. Pairing complete

Basic Operation

1. Press the play button to start, pause, and resume playing
2. Short press the fast forward button to skip to the next title
3. Short press the backward button to return to the previous title

4. Press the talk button to answer or disconnect a call
5. Press and hold the fast forward button + to increase the volume
6. Press and hold the fast backward button - to decrease the volume



Optionally, you can use the included 3.5mm AUX cable to establish a wired connection with a music player or PC.

Thank you for choosing our BT-Speaker stereo bluetooth speaker. Please carefully review the following instructions before operating the Unit.

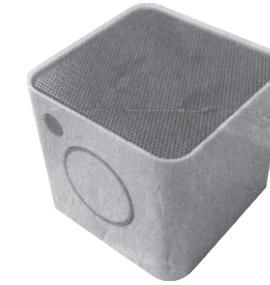
Pairing

1. Recharge the speaker first or connect the speaker to a USB charging port if necessary
2. Turn on the speaker.
3. Activate the bluetooth connectivity on your device.
4. Select "BT-Speaker" from the device list when your device completes bluetooth scanning
5. Enter the code issued by your device (may not applicable for some devices)
6. Pairing complete

Basic Operation

1. Press the play button to start, pause, and resume playing
2. Short press the fast forward button to skip to the next title
3. Short press the backward button to return to the previous title

4. Press the talk button to answer or disconnect a call
5. Press and hold the fast forward button + to increase the volume
6. Press and hold the fast backward button - to decrease the volume



Optionally, you can use the included 3.5mm AUX cable to establish a wired connection with a music player or PC.

Thank you for choosing our BT-Speaker stereo bluetooth speaker. Please carefully review the following instructions before operating the Unit.

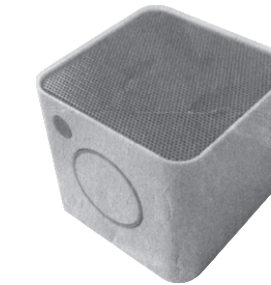
Pairing

1. Recharge the speaker first or connect the speaker to a USB charging port if necessary
2. Turn on the speaker.
3. Activate the bluetooth connectivity on your device.
4. Select "BT-Speaker" from the device list when your device completes bluetooth scanning
5. Enter the code issued by your device (may not applicable for some devices)
6. Pairing complete

Basic Operation

1. Press the play button to start, pause, and resume playing
2. Short press the fast forward button to skip to the next title
3. Short press the backward button to return to the previous title

4. Press the talk button to answer or disconnect a call
5. Press and hold the fast forward button + to increase the volume
6. Press and hold the fast backward button - to decrease the volume



Optionally, you can use the included 3.5mm AUX cable to establish a wired connection with a music player or PC.

Thank you for choosing our BT-Speaker stereo bluetooth speaker. Please carefully review the following instructions before operating the Unit.

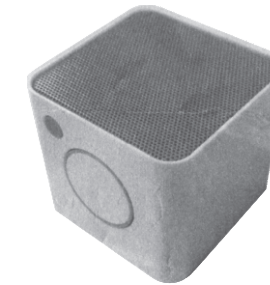
Pairing

1. Recharge the speaker first or connect the speaker to a USB charging port if necessary
2. Turn on the speaker.
3. Activate the bluetooth connectivity on your device.
4. Select "BT-Speaker" from the device list when your device completes bluetooth scanning
5. Enter the code issued by your device (may not applicable for some devices)
6. Pairing complete

Basic Operation

1. Press the play button to start, pause, and resume playing
2. Short press the fast forward button to skip to the next title
3. Short press the backward button to return to the previous title

4. Press the talk button to answer or disconnect a call
5. Press and hold the fast forward button + to increase the volume
6. Press and hold the fast backward button - to decrease the volume



Optionally, you can use the included 3.5mm AUX cable to establish a wired connection with a music player or PC.

FCC Information and Copyright

This equipment has been tested and found to comply with the limits for a Class B digital device, pursuant to part 15 of the FCC Rules.

These limits are designed to provide reasonable protection against harmful interference in a residential installation. This equipment generates,

uses and can radiate radio frequency energy and, if not installed and used in accordance with the instructions, may cause harmful interference

to radio communications. However, there is no guarantee that interference will not occur in a particular installation. If this equipment does

cause harmful interference to radio or television reception, which can be determined by turning the equipment off and on, the user is

encouraged to try to correct the interference by one or more of the following measures:

- Reorient or relocate the receiving antenna.
- Increase the separation between the equipment and receiver.
- Connect the equipment into an outlet on a circuit different from that to which the receiver is connected.
- Consult the dealer or an experienced radio/TV technician for help.

15.19 Labelling requirements.

This device complies with part 15 of the FCC Rules. Operation is subject to the following two conditions:

- (1) This device may not cause harmful interference, and
- (2) this device must accept any interference received, including interference that may cause undesired operation.

changes or modifications not expressly approved by the party responsible for compliance could void the user's authority to operate the equipment.

FCC RF warning statement: the device has been evaluated to meet general RF exposure requirement , The device can be used in portable exposure condition without restriction.