

PAGE 4/FOLD TO INSIDE

SAFETY AND CARE INSTRUCTIONS

- Do not attempt to disassemble the unit.
- Repairs to electrical equipment should only be performed by a qualified service person. Improper repairs may place user as risk and void warranty.
- Do not puncture or harm the exterior surface of the product in any way.
- Do not drop or let the unit fall from high places, as doing so may damage the device.
- Do not use this unit for anything other than its intended use or purpose. Doing so may damage the device and void warranty.
- This product is not a toy. Keep out of reach of children.
- Do not expose batteries or battery pack to excessive heat or open flame.
- Do not expose the unit to extremely high or low temperatures as this will shorten the life of the device, destroy the battery, and/or distort certain parts.
- Do not use abrasive cleaning solvents to clean the unit.
- In order to prolong battery life, turn off when not in use.

WARNINGS

Any changes or modifications not expressly approved by the party responsible for compliance could void this user's authority to operate the equipment.

BACK COVER

FCC STATEMENT

This device complies with part 15 of the FCC Rules. Operation is subject to the following two conditions:

- (1) This device may not cause harmful interference, and
- (2) this device must accept any interference received, including interference that may cause undesired operation.

NOTE: This equipment has been tested and found to comply with the limits for a wireless power charger, pursuant to Part 15 of the FCC Rules. These limits are designed to provide reasonable protection against harmful interference in a residential installation. This equipment generates, uses and can radiate radio frequency energy and, if not installed and used in accordance with the instructions, may cause harmful interference to radio communications. However, there is no guarantee that interference will not occur in a particular installation. If this equipment does cause harmful interference to radio or television reception, which can be determined by turning the equipment off and on, the user is encouraged to try to correct the interference by one or more of the following measures:

- Reorient or relocate the receiving antenna.
- Increase the separation between the equipment and receiver.
- Connect the equipment into an outlet on a circuit different from that to which the receiver is connected.
- Consult the dealer or an experienced radio/TV technician for help.

CAUTION: Changes or modifications not expressly approved by the party responsible for compliance could void the user's authority to operate the product. This equipment complies with FCC radiation exposure limits set forth for an uncontrolled environment. This equipment should be installed and operated with minimum distance 20cm between the radiator and your body. This transmitter must not be co-located or operating in conjunction with any other antenna or transmitter.

MONSTER

SUPPORT: 877-543-3540

WWW.MONSTER-AUTO.COM

©2021 Lifeworks Technology Group LLC. New York, NY 10018. The M Monster logo is a trademark used under license of Monster, Inc. All rights reserved. Manufactured, marketed and distributed by Lifeworks Technology Group LLC. Made in China. All other brands are registered trademarks of their respective companies.

California Proposition 65 Warning:

WARNING: Cancer and Reproductive Harm
www.P65Warnings.ca.gov



Google Play and the Google Play logo are trademarks of Google LLC. Apple and the Apple logo are registered trademarks of Apple Inc. The Bluetooth word mark and logos are registered trademarks owned by Bluetooth SIG, Inc. Photos & illustrations may differ slightly from actual product & are for demonstration purposes only. Color & lighting effects are enhanced for packaging.

FRONT COVER

LT-1475

Bluetooth RGB LED STRIP LIGHT

APP CONTROLLED SMART LED LIGHTING



4 STRIPS INCLUDED

DOWNLOAD THE APP

CONNECT WITH BLUETOOTH

USER MANUAL

3MNLA0638B0G7

SIDE 1/OUTSIDE

INSIDE/PAGE 1

INSTALLATION

1. Clean the surface you intend to stick the light strip to.
2. Peel off the backing strip of the 3M adhesive tape.
3. Press and hold the light strip firmly against the surface.
4. Plug the DC Adapter into your car's 12V DC power socket.

OPERATION

- Press the power button located on the DC plug. The LED power indicator will illuminate indicating there is power to the LED accent light.
- Scan QR code to download Monster Smart App. You can also find it on the IR connector.

Apple:

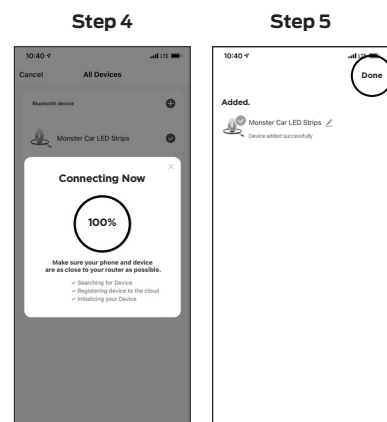
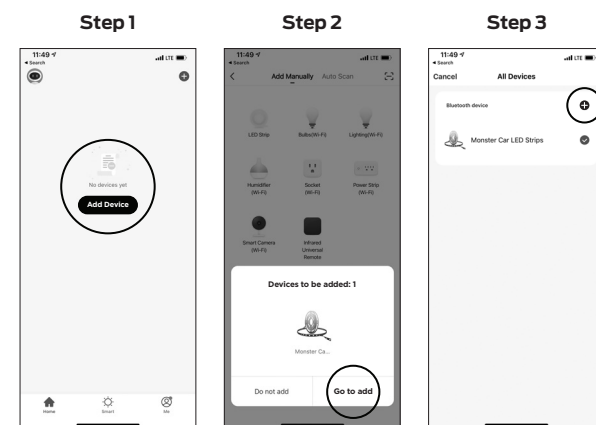


Google Play Store:



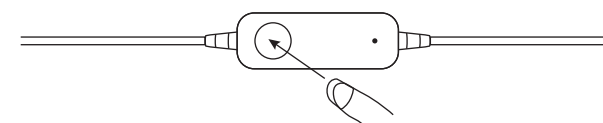
- Open Monster Smart app and register user account.
- Click the Add Device button as shown and follow the steps to add the Monster Car LED Strips manually or automatically.

INSIDE/PAGE 2



INSIDE/PAGE 3

- After adding the light strip, you can change LED color or adjust brightness to your favorite mood.
- Press the button on IR connector to change light color.



PACKAGING CONTENTS

- (4pc) LED Light Strips with Smart App Control
- (1) DC 12V Car Adapter
- (1) User Manual

TECHNICAL DATA

Voltage supply: LED strips (USB) 5V
 Output: 2.5W

SIDE 2/INSIDE