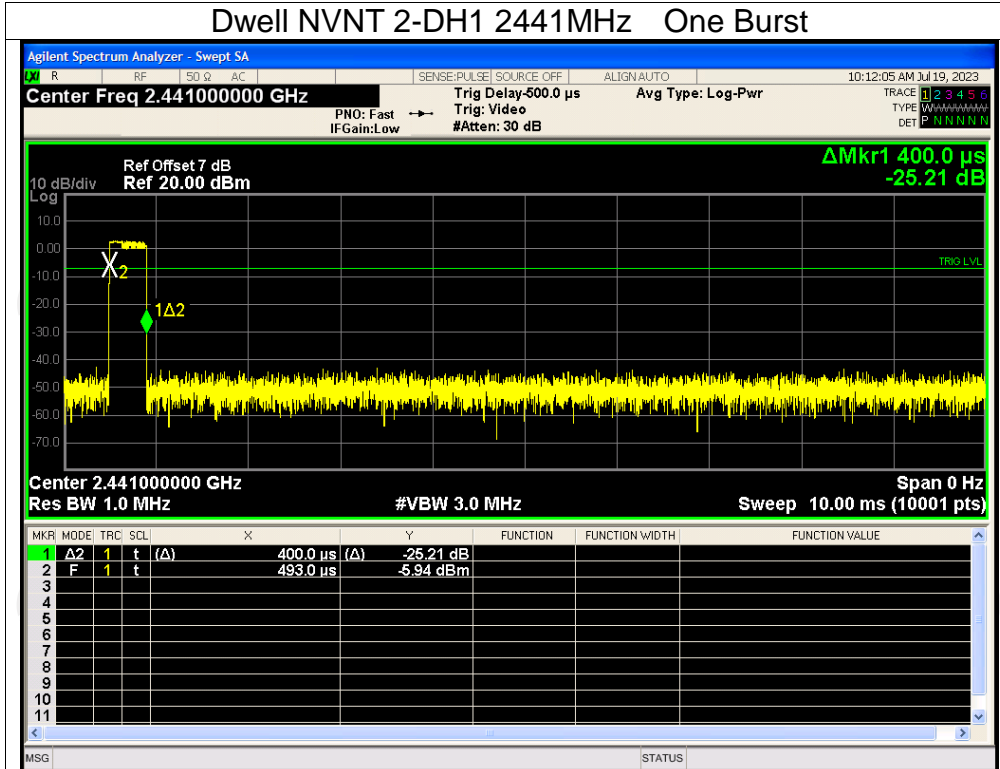
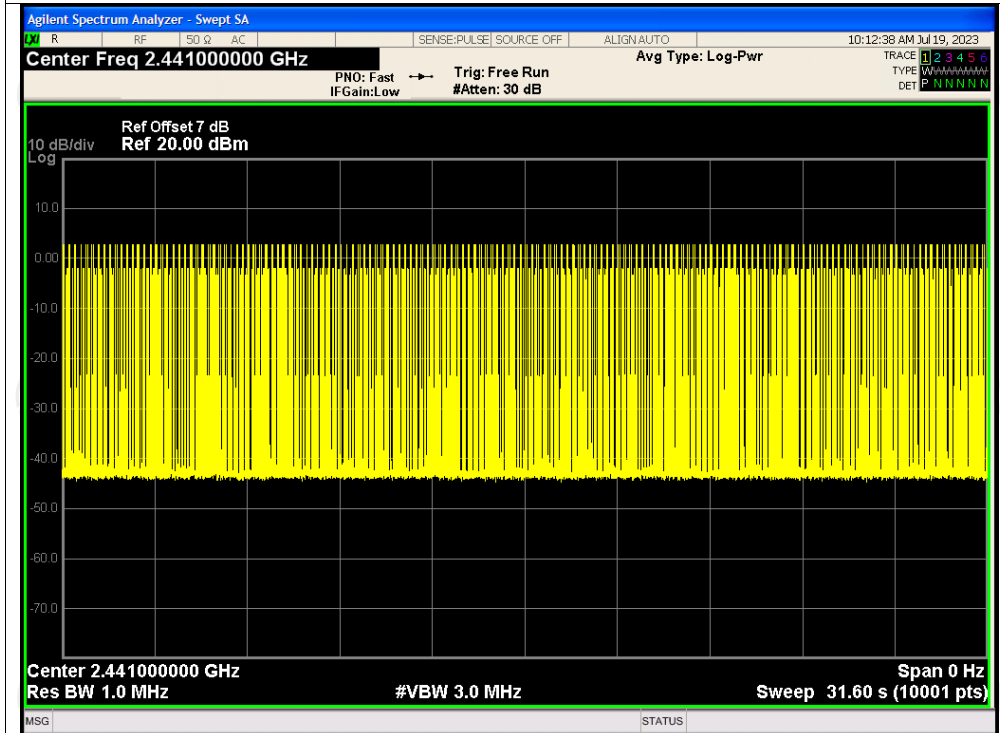


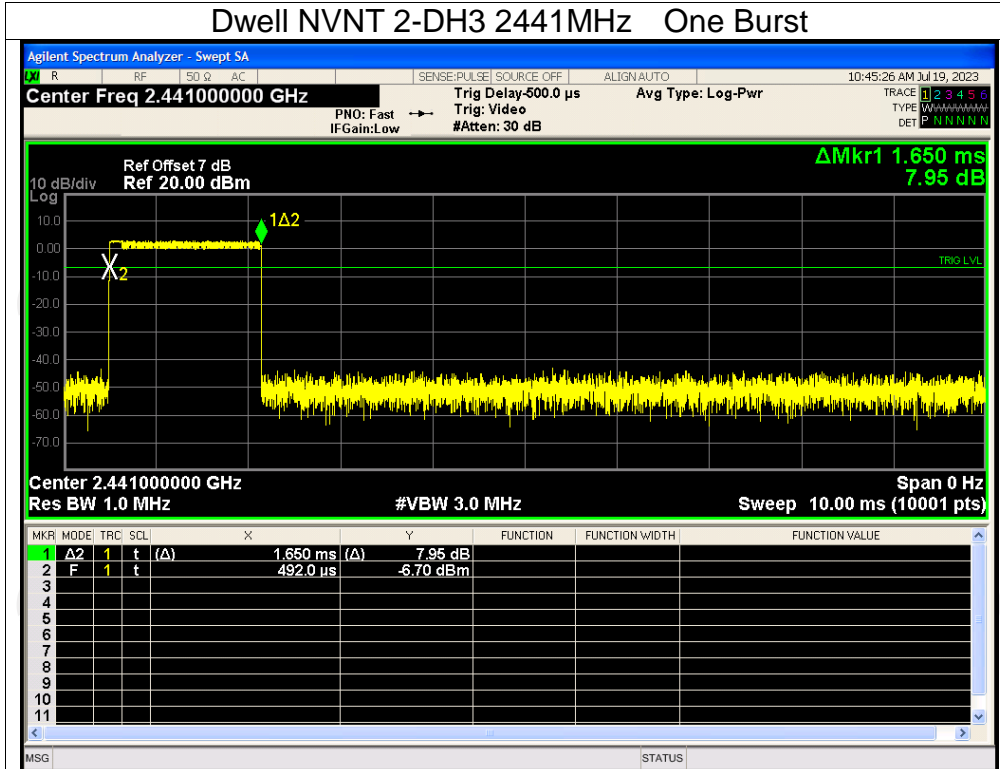
Dwell NVNT 2-DH1 2441MHz One Burst



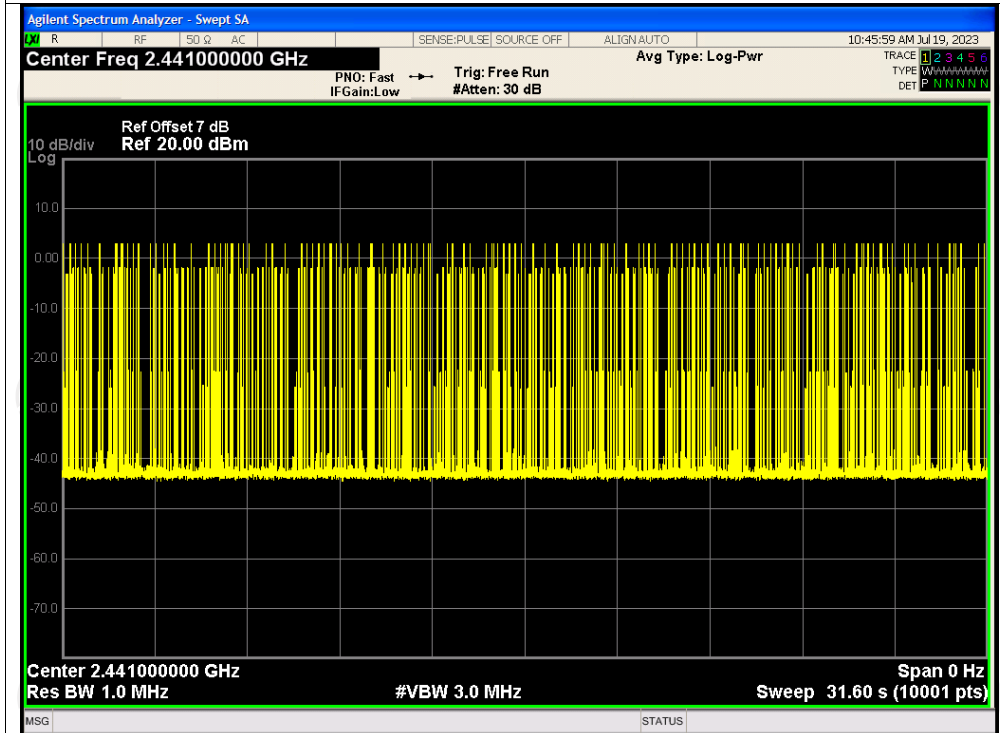
Dwell NVNT 2-DH1 2441MHz Accumulated



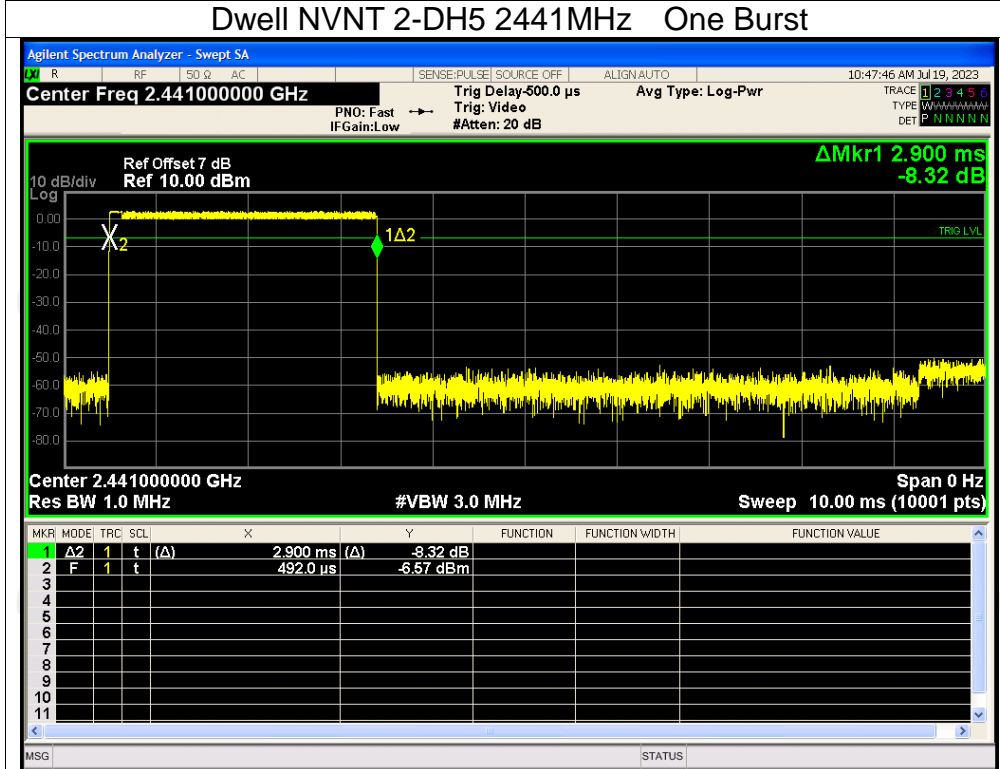
Dwell NVNT 2-DH3 2441MHz One Burst



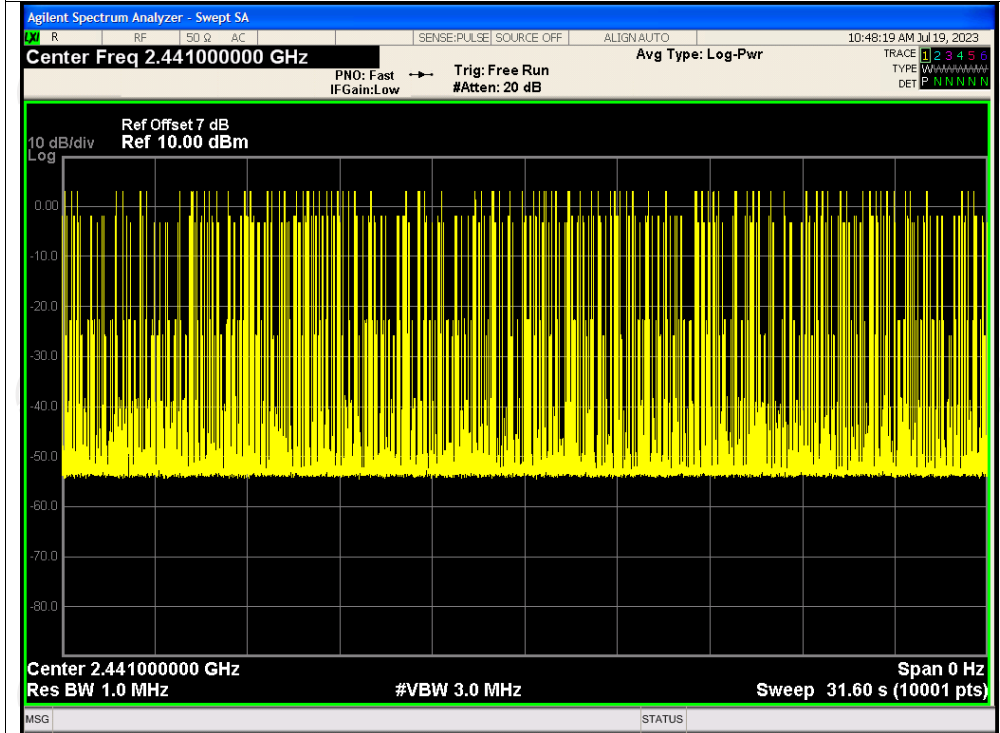
Dwell NVNT 2-DH3 2441MHz Accumulated



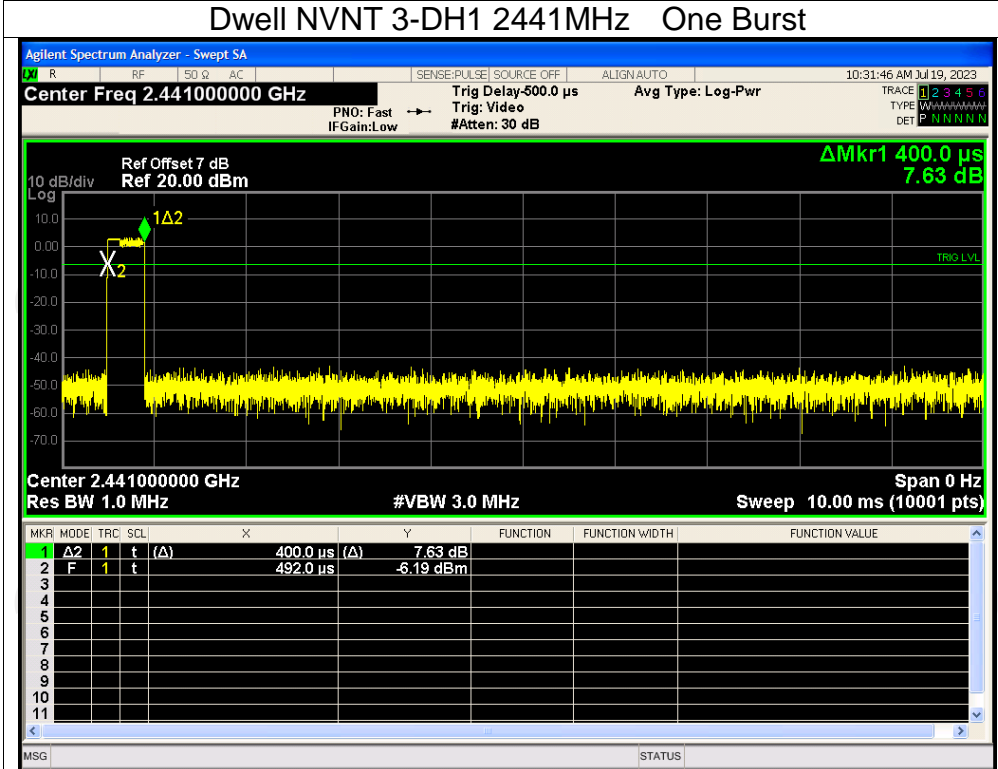
Dwell NVNT 2-DH5 2441MHz One Burst



Dwell NVNT 2-DH5 2441MHz Accumulated



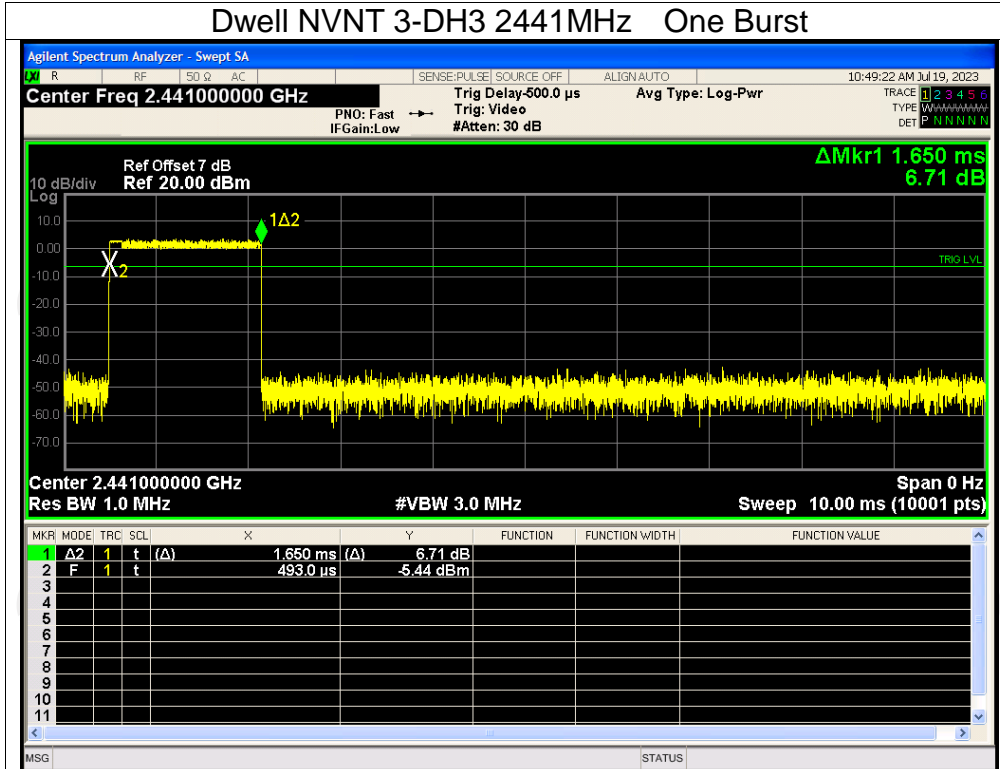
Dwell NVNT 3-DH1 2441MHz One Burst



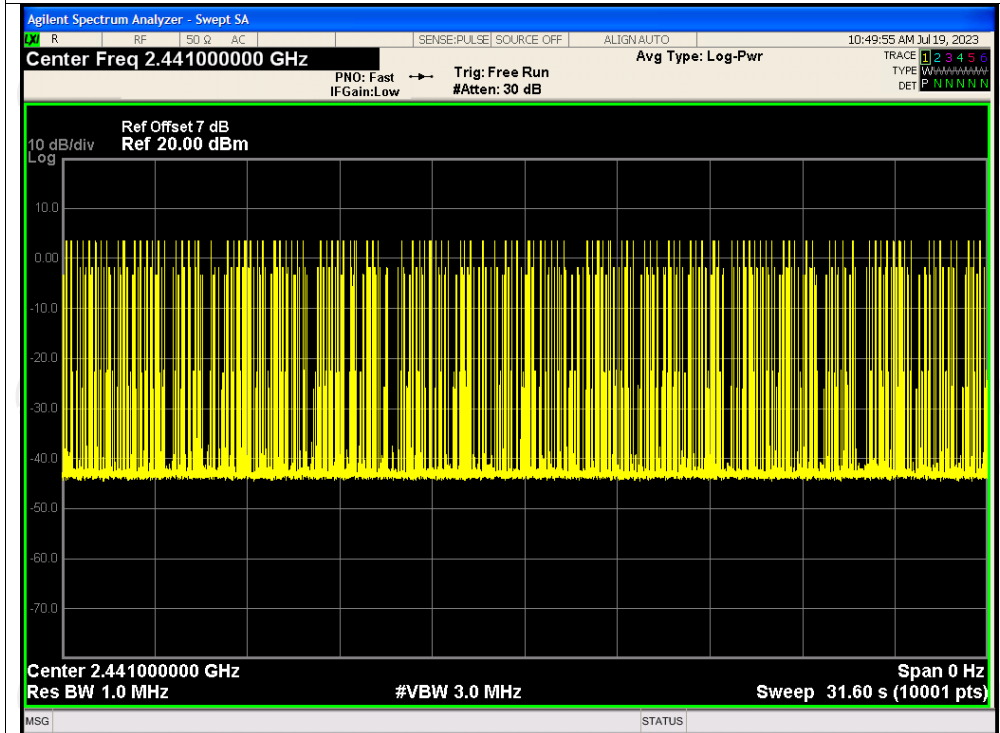
Dwell NVNT 3-DH1 2441MHz Accumulated



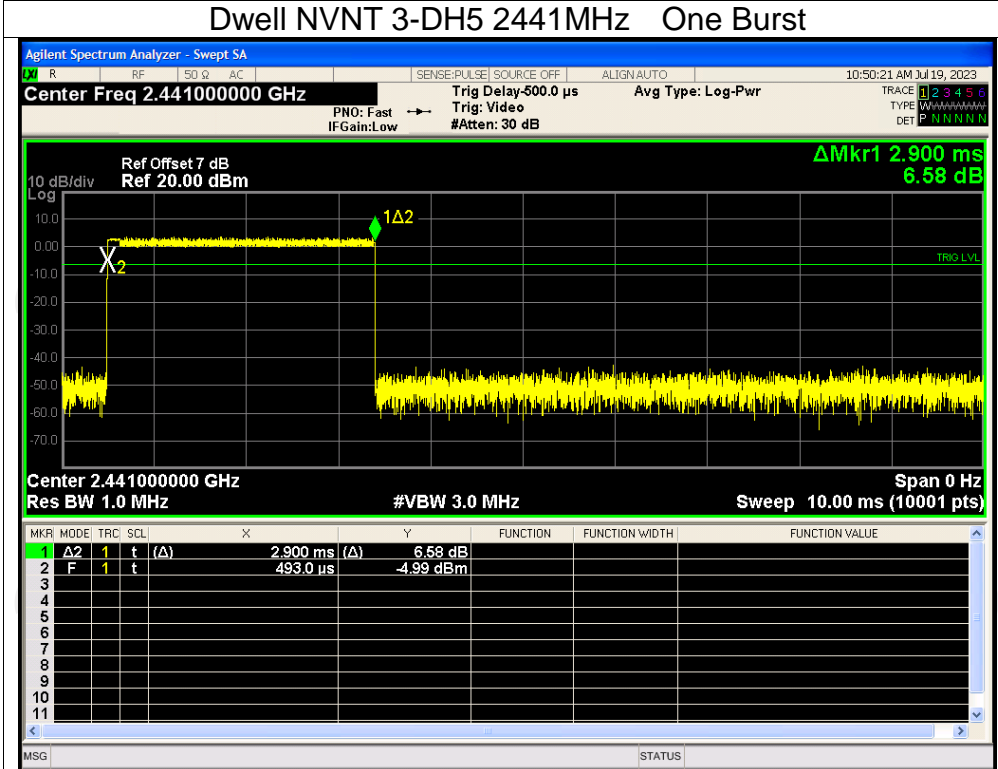
Dwell NVNT 3-DH3 2441MHz One Burst



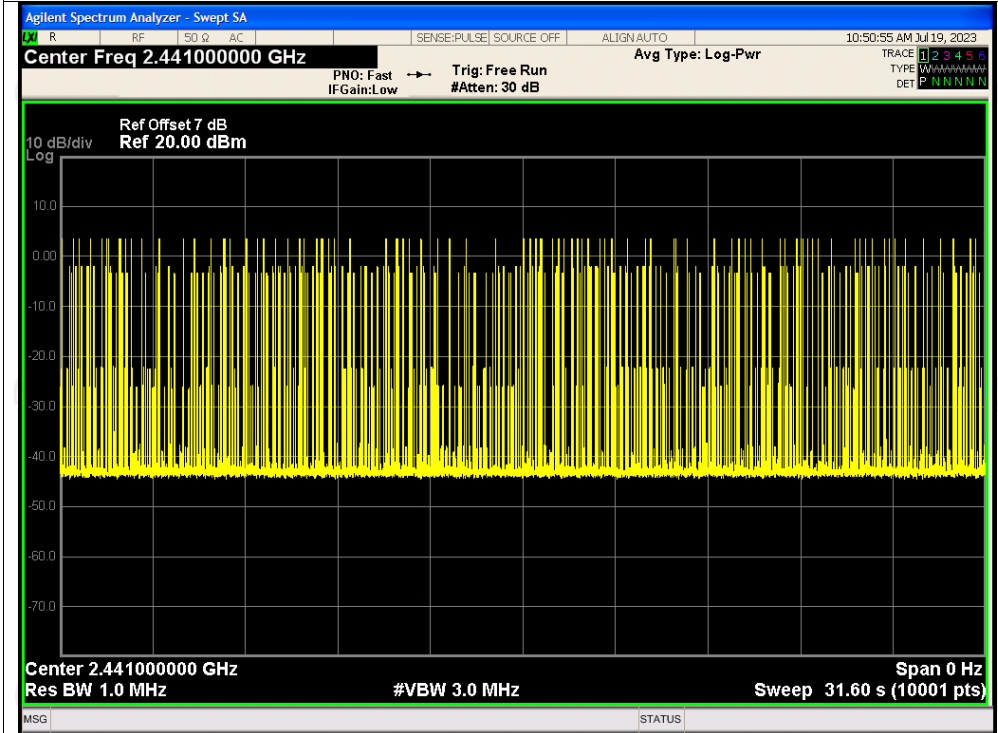
Dwell NVNT 3-DH3 2441MHz Accumulated



Dwell NVNT 3-DH5 2441MHz One Burst



Dwell NVNT 3-DH5 2441MHz Accumulated

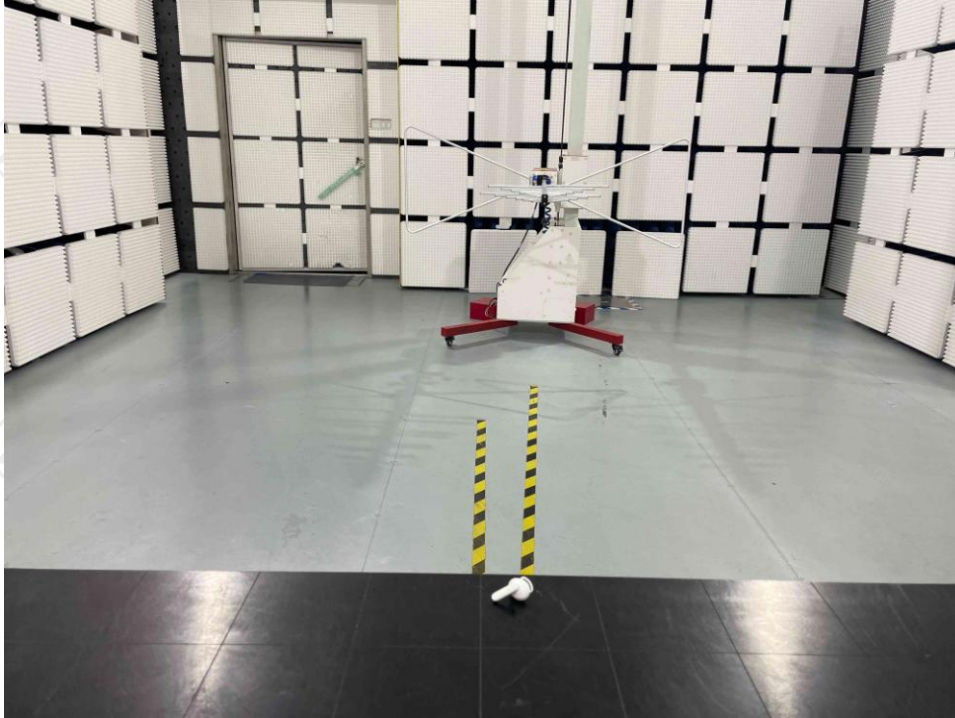


Appendix B: Photographs of Test Setup

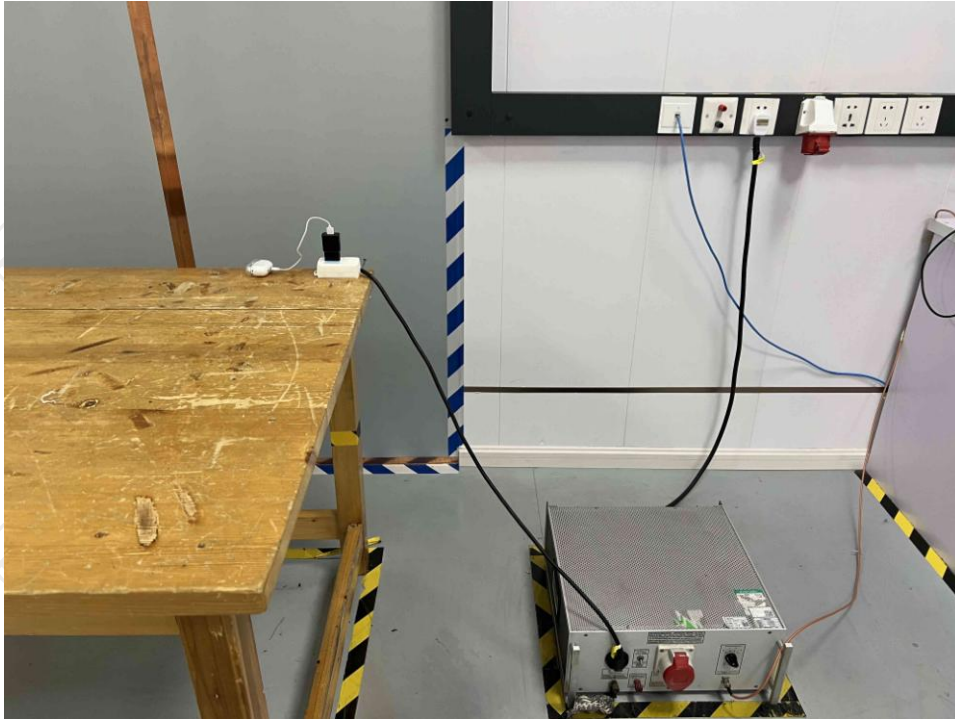
Product: Prodigy Clear TWS Earphones with Charging Case

Model: MA-3768

Radiated Emission



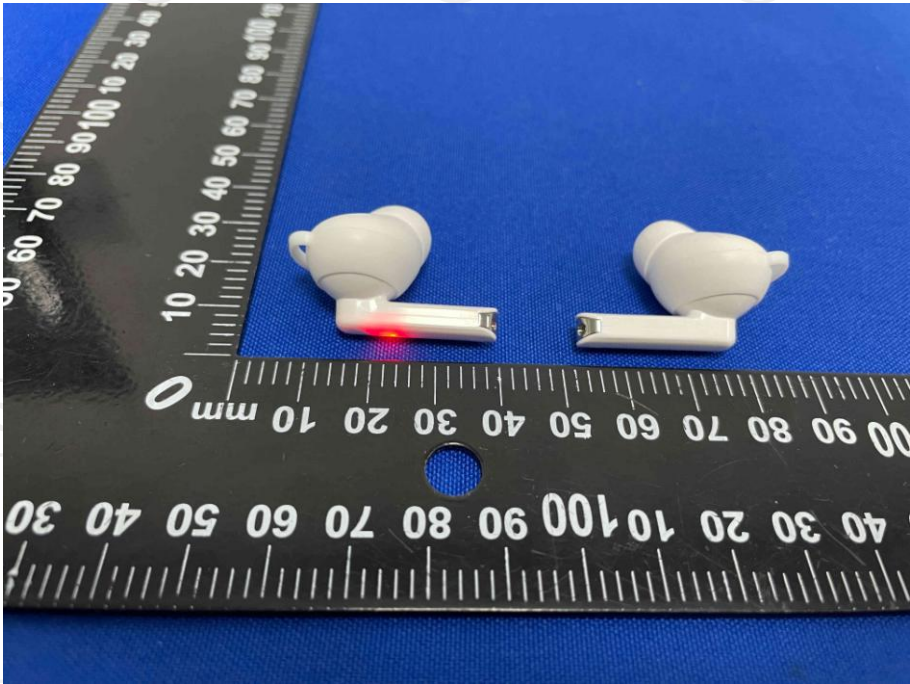
Conducted Emission



Appendix C: Photographs of EUT
Product: Prodigy Clear TWS Earphones with Charging Case
Model: MA-3768
External Photos

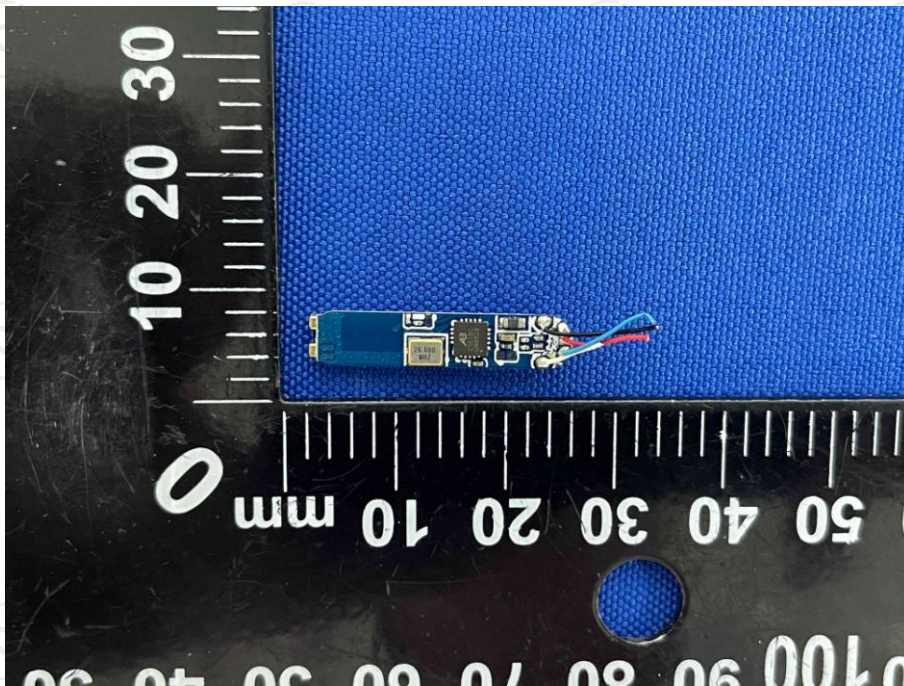
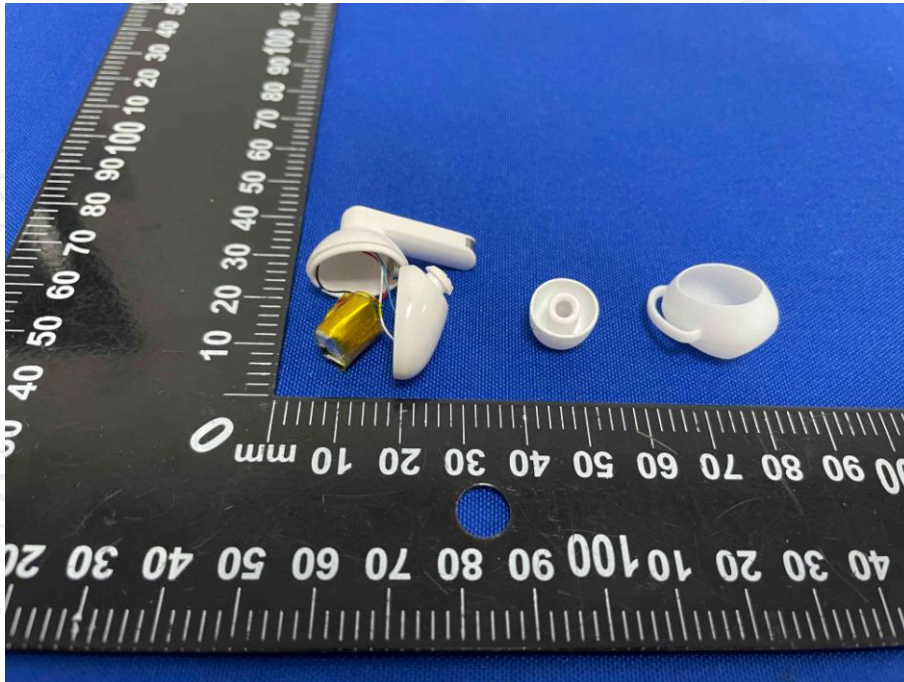


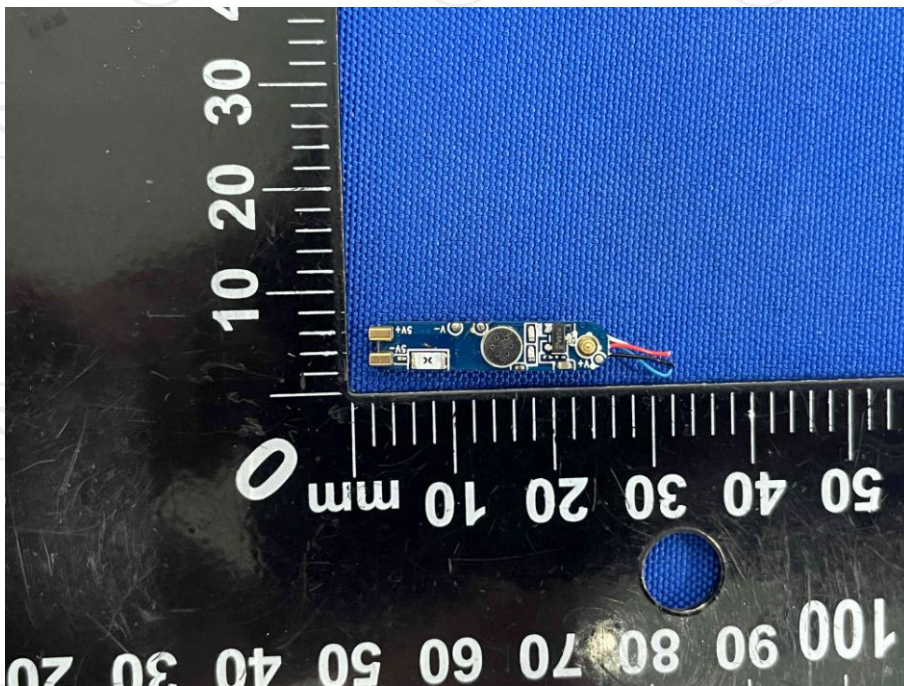
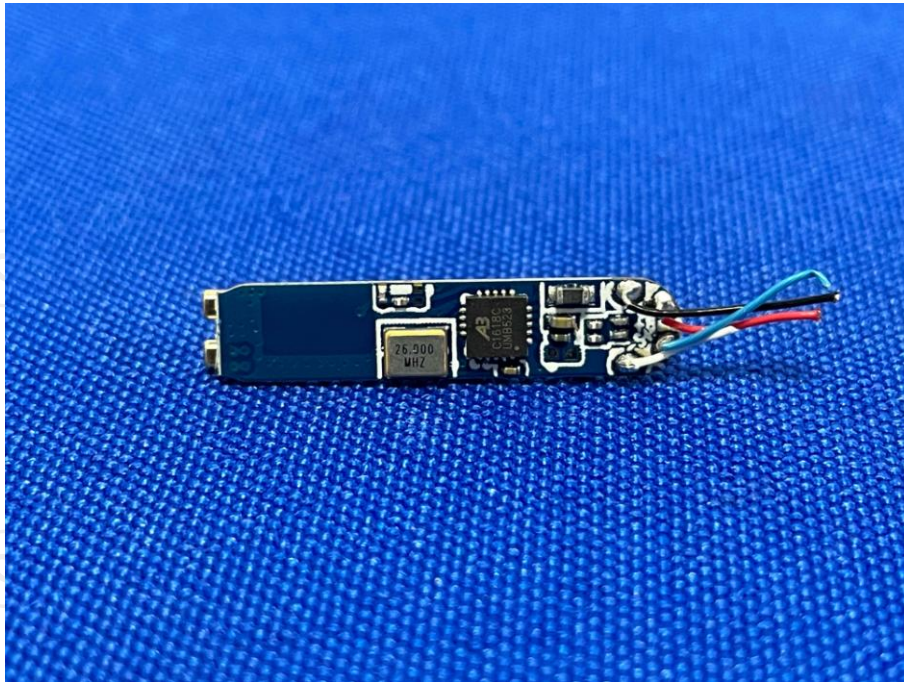


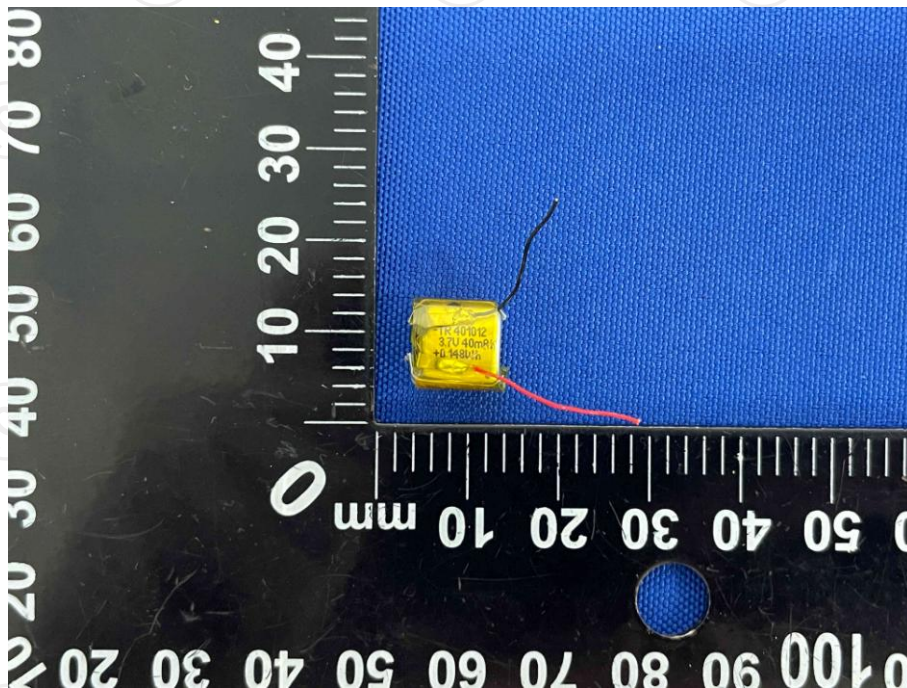
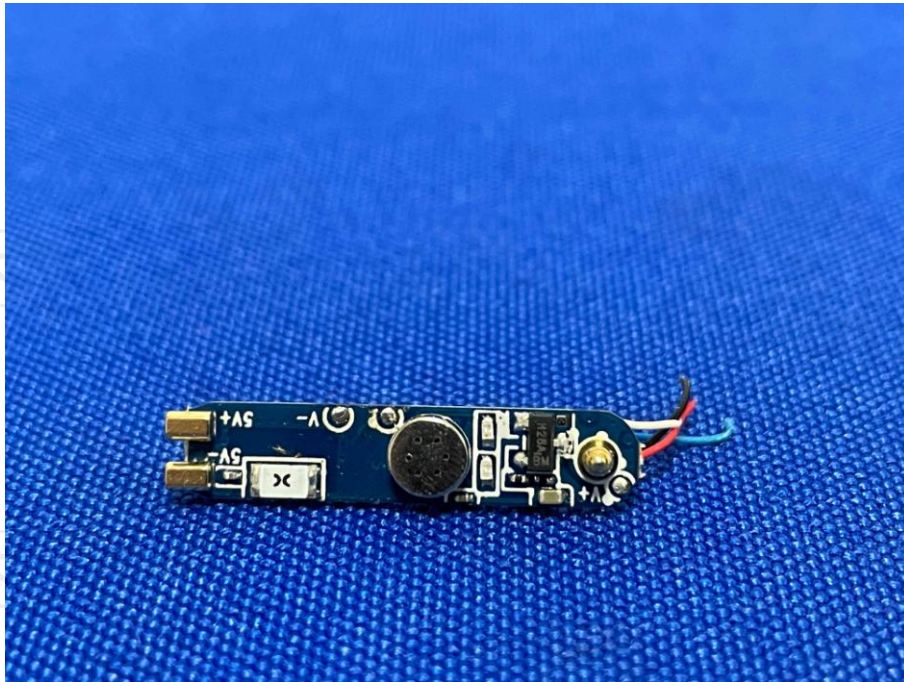


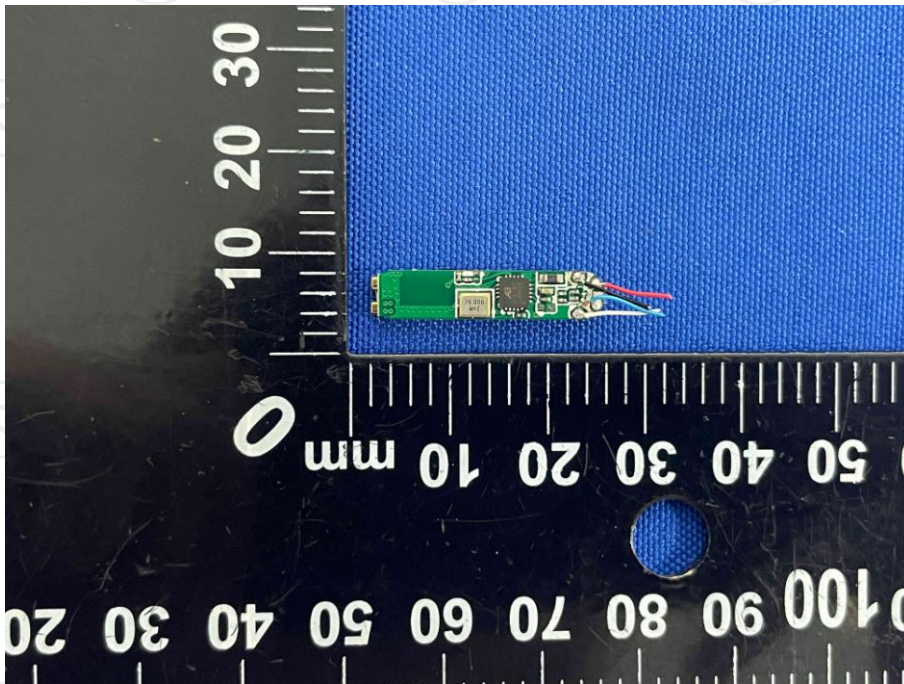
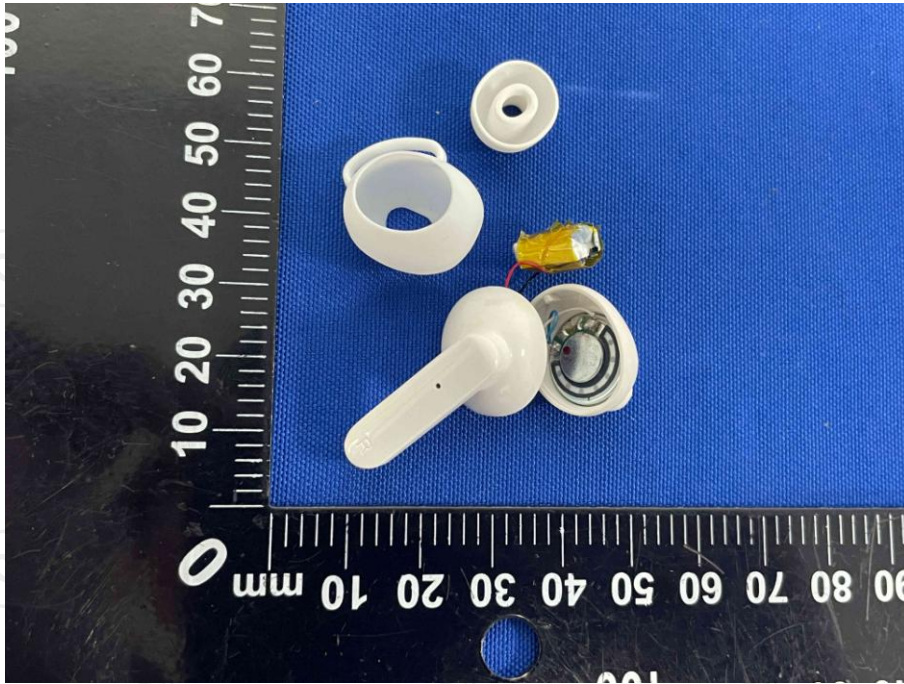


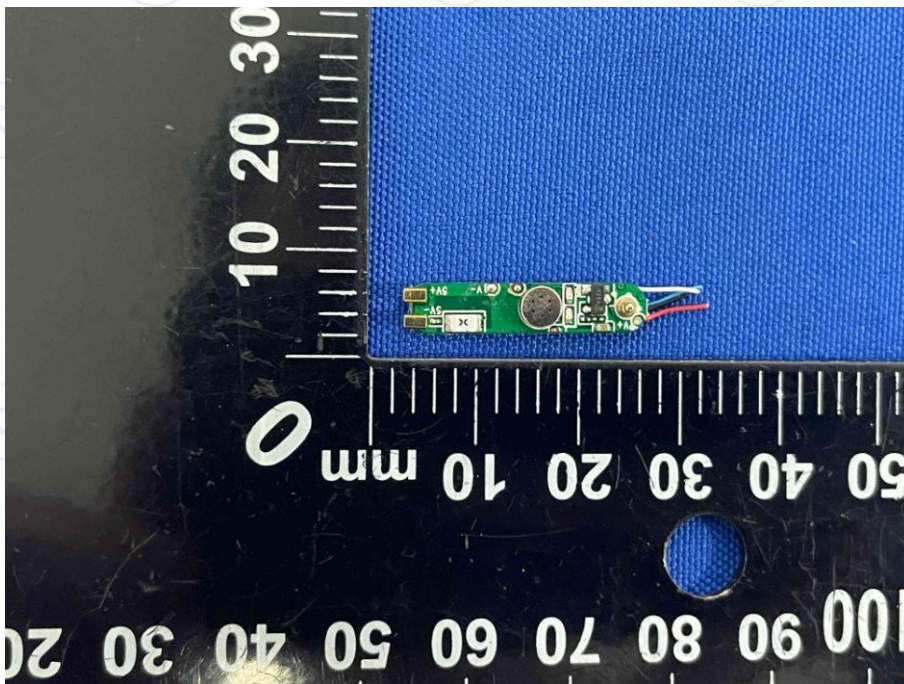
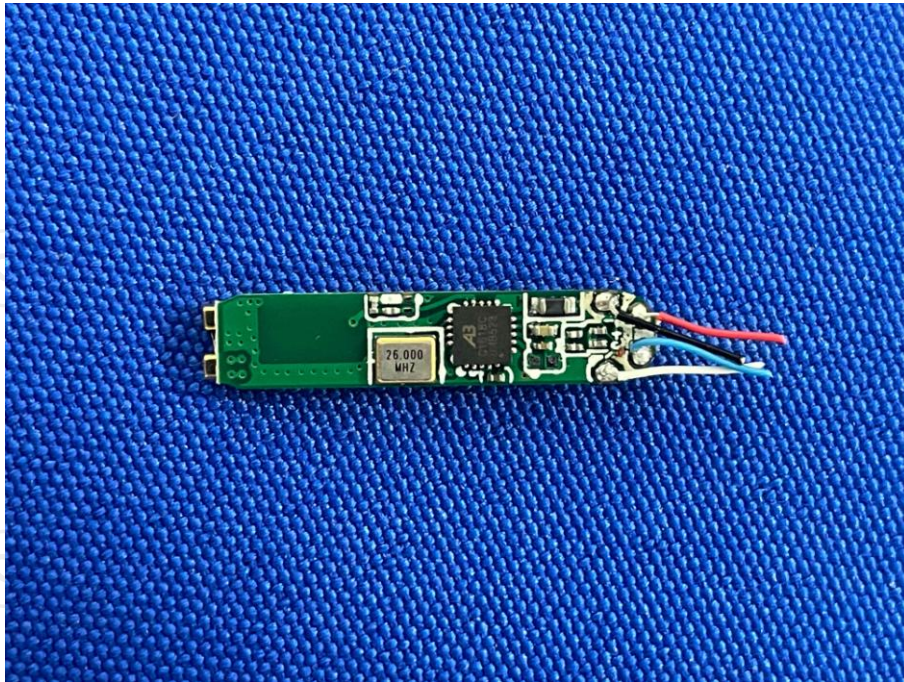
Product: Prodigy Clear TWS Earphones with Charging Case
Model: MA-3768
Internal Photos

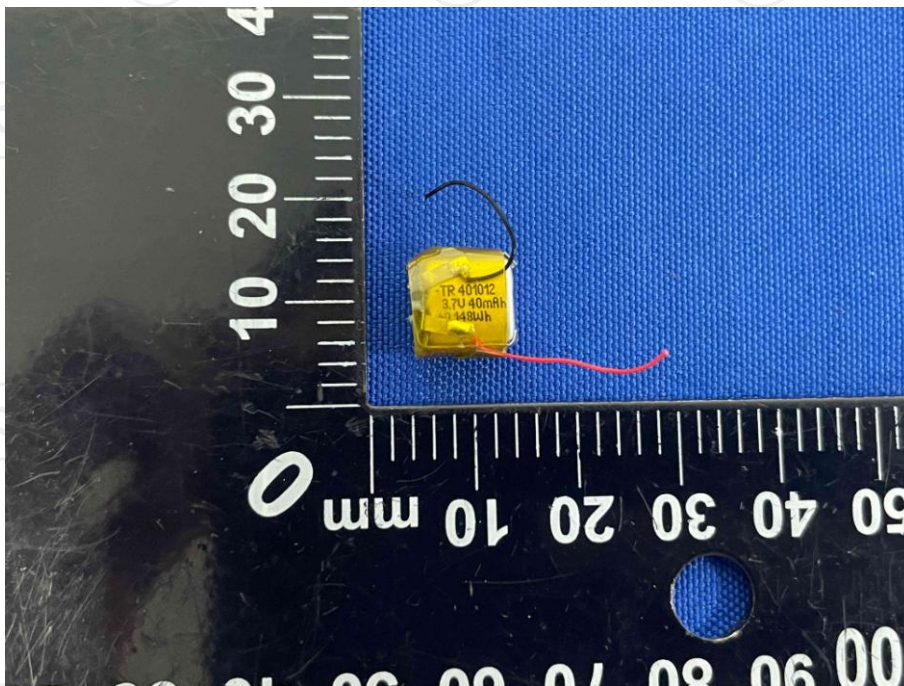
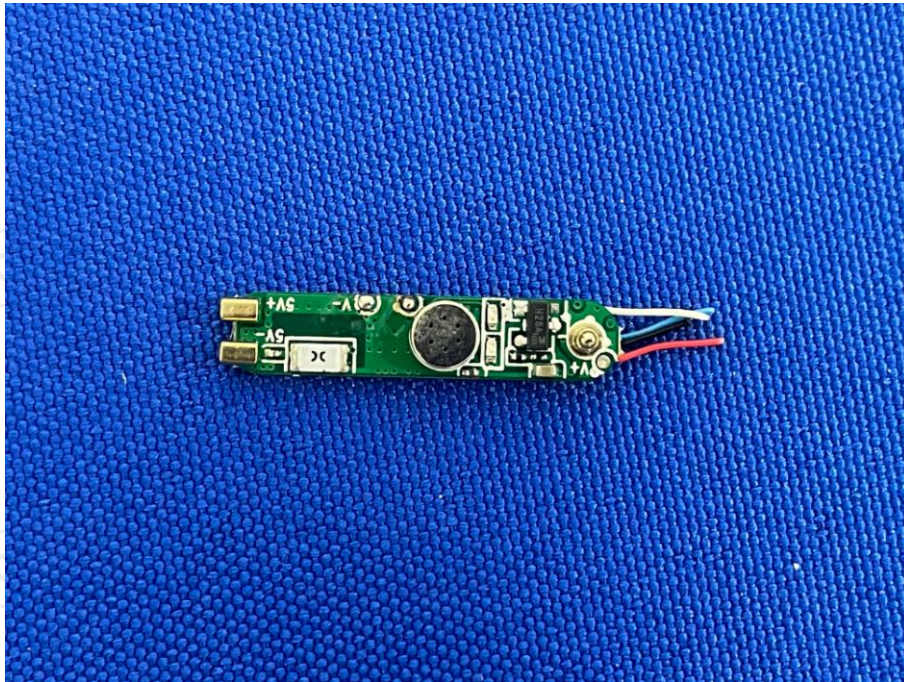












*****END OF REPORT*****