



Bluetooth Antenna
specification&Test report

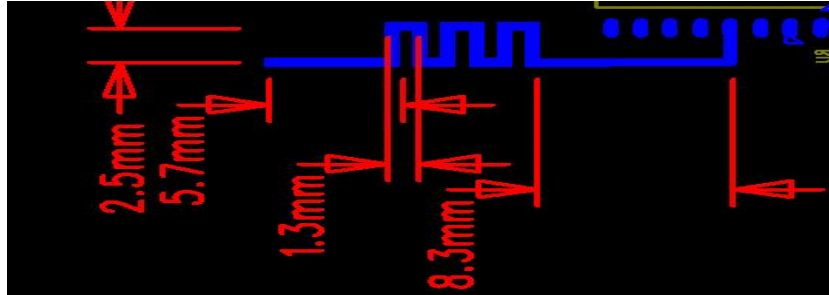
Yichip Microelectronics

©2014

antenna design specification

Antenna dimensions as blow picture show: the material is FR4 and the thickness is 1.6mm of PCB.

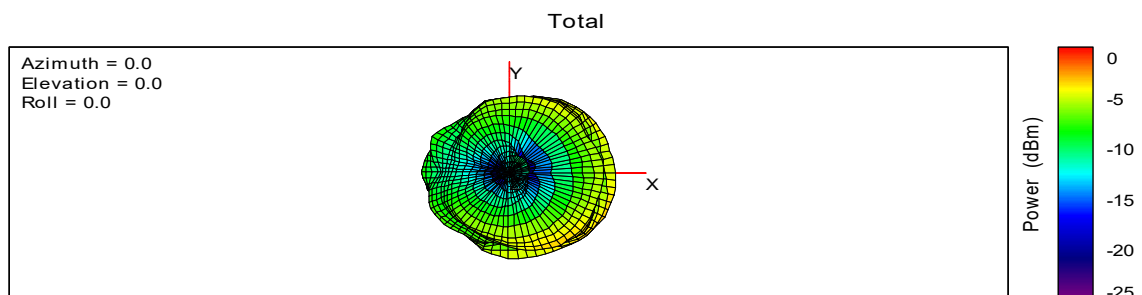
ANT1:



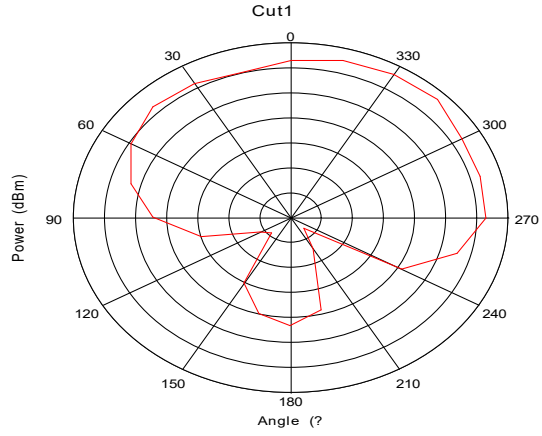
Gian and Efficiency

Frequency (MHz)	Efficiency(%)	Gain(dBi)
2300	13.17	-1.57
2320	19.08	-0.76
2340	22.65	-0.41
2360	22.62	-0.12
2380	18.03	-0.42
2400	14.86	-0.93
2420	12.54	-1.17
2440	9.92	-2.03
2460	7.46	-2.47
2480	6.11	-2.98
2500	5.39	-3.83

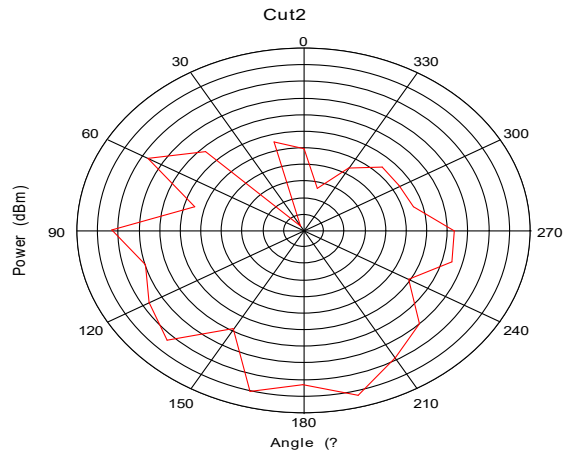
3D and 1D Radiation Patterns



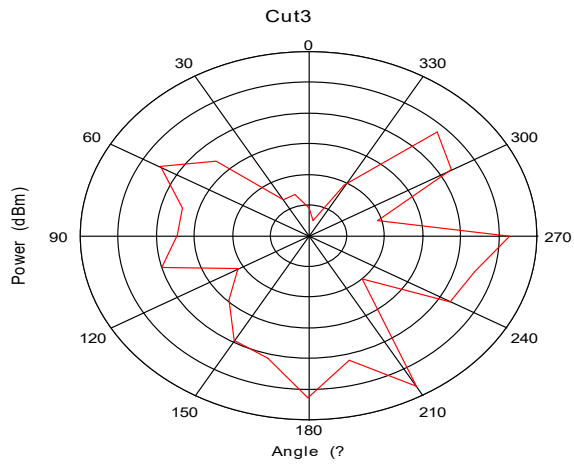
2440M TRP 1



Max: -2
Min: -16
Scale: 2/div



Max: 0
Min: -22
Scale: 2/div



Max: -2
Min: -14
Scale: 2/div

ANT2:

2360	44.44	2.69
2380	42.81	3.27
2400	46.29	3.85
2420	56.89	4.41
2440	60.27	4.33
2460	57.59	3.73
2480	55.54	3.66

2500	56.50	4.05
2520	50.26	3.52
2540	47.76	3.49

3D and 1D Radiation Patterns