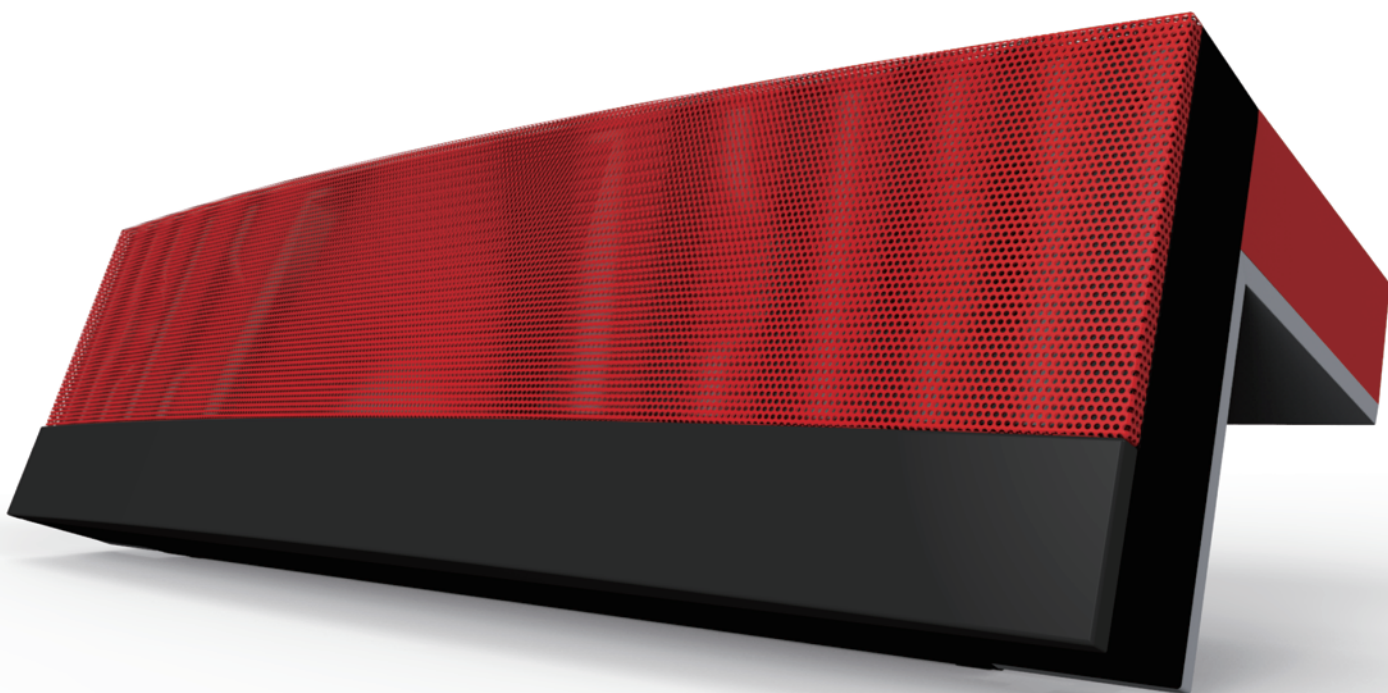


BLUETOOTH™
HOME SPEAKER SYSTEM



PID 11411/11412

User's Manual



SAFETY WARNINGS AND GUIDELINES

Please read this manual thoroughly prior to using this device. Pay particular attention to these Safety Warnings and Guidelines. Keep this manual in a safe place for future reference.

- Do not expose this device to water or moisture of any kind. Do not place drinks or other containers with liquid on or near the device. If moisture does get in or on the device, immediately unplug it from the power outlet.
- Do not expose this device to fire or other heat sources. Do not install it on or near heat sources, such as ventilators, radiators, or near a fireplace. Do not place objects with open flame, such as lit candles, on or near this device.
- This device contains no user-serviceable parts. Do not open or attempt to modify this device.
- Take care to ensure that the power cord does not get crimped, kinked, pinched, stepped on, or otherwise damaged. Take care that the cord cannot be a trip/fall hazard.
- When unplugging connections, always grasp the connector head or AC adapter body. Never pull on the cord or wires.
- Use only the AC adapter included with this device. If the AC adapter is lost or damaged, use only an exact replacement.
- Remove power from this device when it will not be in use for some time.
- Do not use solvents or chemical cleaners on this device. Clean using a soft, dry cloth only. For particularly stubborn dirt, moisten the cloth with warm water.

FEATURES

- 2.1 channel system with two full range drivers and two bass drivers
- 10 watts per channel full range amplifier and 20 watts bass amplifier
- Uses Bluetooth v4.0 with the A2DP and AVRCP profiles
- NFC functionality for automatic Bluetooth pairing
- Features the aptX® codec for superior audio clarity
- Five selectable EQ settings (Normal, Jazz, Rock, Pop, Classic)
- USB port for charging mobile devices
- 3.5mm stereo auxiliary input
- Full function IR remote control
- 3.5mm stereo headphone output
- Touch panel controls

PACKAGE CONTENTS

Please take an inventory of the package contents to ensure you have all the items listed below. If anything is missing or damaged, please contact Customer Service for a replacement.

1x Bluetooth home speaker system

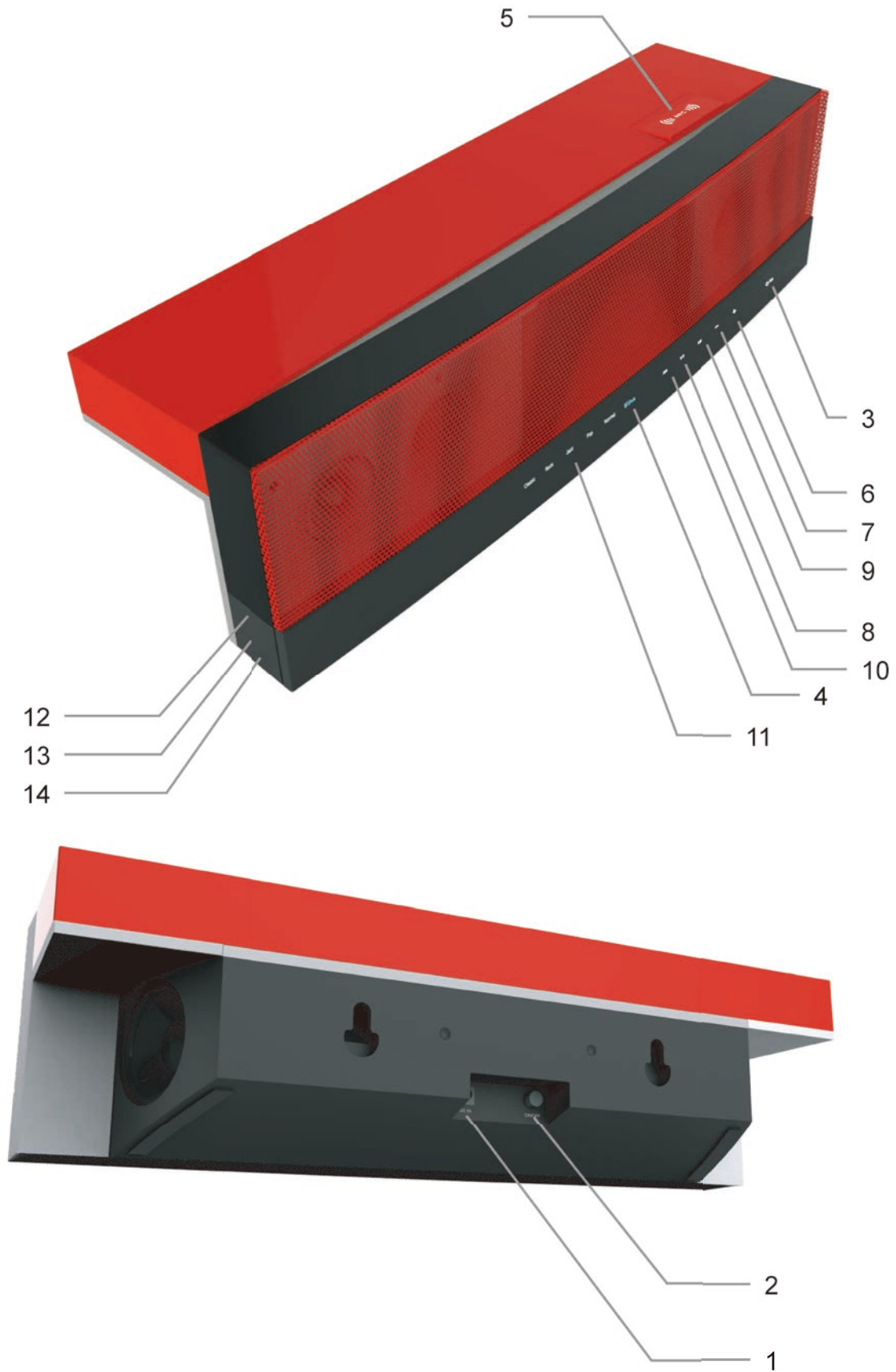
1x AC power adapter (15 VDC, 3A)

1x 3.5mm audio patch cable

1x IR remote control

1x User's manual

CONTROLS AND CONNECTIONS



1. DC IN

Plug the power adaptor into the **DC IN** socket on the rear panel.

2. ON/OFF Button

This button applies and removes power to the speaker system. When power is applied, the system goes into Standby mode.

3. Standby/EQ Button/Indicator

- When in Standby, the indicator is Red and all other indicators are off.
- Press to turn the unit on and the indicator will turn White.
- With the unit powered on, press the Standby/EQ button to cycle through the available EQ settings.
- To return to Standby mode, press and hold the button for about 3 seconds.

4. BT/Aux Indicator

- The indicator flashes Blue when there is no active Bluetooth connection and the device is ready to be paired.
- The indicator glows Blue steadily when there is an active Bluetooth connection.
- The indicator glows Green steadily when the Auxiliary input is in use.

5. NFC Hotspot

Place your NFC equipped device on the NFC Hotspot to automatically pair it and connect or disconnect to the speaker system.

6. Volume + Button

Press this button to increase the volume level.

7. Volume – Button

Press this button to decrease the volume level.

8. Play/Pause Button

- Press this button to start or pause playback from your Bluetooth equipped device. This button has no effect if the Auxiliary input is in use.
- Press and hold this button for about 3 seconds to delete the current pairing, allowing the speaker system to be paired to a different device.

9. Next Button

Press this button to skip forwards to the next track in the playlist. This button has no effect when the Auxiliary input is in use.

10. Previous Button

Press this button to skip back to the beginning of the current track. If already at the beginning, it will skip back to the beginning of the previous track in the playlist. This button has no effect when the Auxiliary input is in use.

11. EQ Indicators

These indicators show which EQ setting is in use. The available EQ settings are:

- Normal
- Classic
- Rock
- Jazz
- Pop
- Normal

12. Headphone Jack

Plug a pair of headphones into this 3.5mm TRS jack to listen to music privately. The speakers are automatically muted whenever a TRS plug is inserted into this jack.

13. Aux In Jack

Plug a 3.5mm TRS audio cable into this jack to connect a device that lacks Bluetooth connectivity. The Auxiliary input overrides any existing Bluetooth connection.

14. USB Power Port

Plug any USB powered device (smartphone, tablet, mp3 player, etc.) into this USB port to power or charge the device. This port provides 5 VDC, 2000mA of charging power.

REMOTE CONTROL



15. Power ON/OFF

Press this button to turn the unit on or to put it into Standby mode.

16. Bluetooth pairing

Press and hold this button for about 3 seconds to disconnect the current pairing, allowing the speaker system to be paired to a different device.

17. Volume down

Press this button to decrease the volume level.

18. Volume up

Press this button to increase the volume level.

19. Previous

Press this button to skip back to the beginning of the current track. If already at the beginning, it will skip back to the beginning of the previous track in the playlist. This button has no effect when the Auxiliary input is in use.

20. Play/Pause

- Press this button to start or pause playback from your Bluetooth equipped device. This button has no effect if the Auxiliary input is in use.

21. Next

Press this button to skip forwards to the next track in the playlist. This button has no effect when the Auxiliary input is in use.

22. EQ Pop

Press this button to select the Pop EQ setting.

23. EQ Rock

Press this button to select the Rock EQ setting.

24. EQ Jazz

Press this button to select the Jazz EQ setting.

25. EQ Normal

Press this button to select the Normal EQ setting.

26. EQ Classic

Press this button to select the Classic EQ setting.

INITIAL SETUP

1. Plug one end of the AC adapter into the DC IN jack on the rear panel. Plug the other end into a nearby AC power outlet.
2. Depress the ON/OFF button on the rear panel. The Standby/EQ button/indicator on the front panel will glow Red in response.
3. Press the Standby/EQ button/indicator on the front panel. The indicator will change to White and the other buttons and indicators will illuminate in response.
4. Pair the system with your Bluetooth equipped audio device or physically connect it to the AUX IN jack on the left side panel.

NFC PAIRING

If your Bluetooth device is equipped with NFC, you can pair it to the speaker system automatically by performing the following steps:

1. Check the BT/Aux indicator on the front panel. If it is flashing Blue, the system is ready for pairing. If it is glowing Blue steadily, it is already paired. To disconnect the existing pairing, press and hold the Play/Pause button on the front panel for about 3 seconds until the indicator begins flashing.
2. Check your device to ensure that both Bluetooth and NFC are activated.
3. Place your Bluetooth device on the NFC Hotspot. The device will automatically pair with the speaker system and the BT/Aux indicator will cease flashing and will glow Blue continuously.

MANUAL PAIRING

If your Bluetooth device lacks NFC or if you simply wish to manually pair the device with the speaker system, perform the following steps:

1. Check the BT/Aux indicator on the front panel. If it is flashing Blue, the system is ready for pairing. If it is glowing Blue steadily, it is already paired. To delete the existing pairing, press and hold the Play/Pause button on the front panel for about 3 seconds until the indicator begins flashing.
2. Ensure your device is within 3 feet (1 meter) of the speaker system.
3. Open the Bluetooth setup section on your device.
4. Initiate a Scan for nearby Bluetooth devices.
5. In the list of devices, select the entry labeled **BT speaker**.
6. When pairing is complete, the BT/Aux indicator will cease flashing and will glow Blue continuously.
7. After pairing is complete, you may need to tap the **BT speaker** entry again to establish the connection.

DISCONNECT A PAIRING

If you want to pair the speaker system with a different device, you will need to delete the current pairing by performing the following steps:

1. Press and hold the Play/Pause button on the front panel for about 3 seconds.
2. The BT/Aux indicator will begin flashing, indicating that the speaker system is ready to be paired to another device.

SPECIFICATIONS

Full Range Amplifier: 10 watts x 2 channels

Bass Amplifier: 20 watts

Full Range Driver Type: 2" driver

Woofer Driver Type: 3" fiber reinforced paper cone with rubber surround

Frequency Response: 70 Hz ~ 20 kHz (+/- 3dB)

Signal to Noise Ratio: 70dB

Bluetooth Version: v4.0 with NFC

Bluetooth Range: up to 32 feet (10 meters)

Bluetooth Profiles: A2DP (aptX®), AVRCP

Codec Support: aptX®

AC Adapter Input: 100 ~ 240 VAC, 50/60 Hz

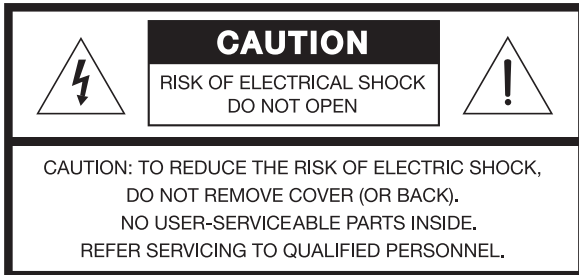
AC Adapter Output: 15 VDC, 3A

Dimensions: 20.5" x 5.8" x 5.6" (520 x 147 x 142 mm)

Weight: 8.6 lbs. (3.9kg)

Safety and Compliance

WARNING: To reduce the risk of fire or electrical shock, do not expose the system to rain or moisture.



A warning that batteries (battery pack or batteries installed) shall not be exposed to excessive heat such as sunshine, fire or the light.

FCC Information

This equipment has been tested and found to comply with the limits for a Class B digital device, pursuant to part 15 of the FCC Rules. These limits are designed to provide reasonable protection against harmful interference in a residential installation. This equipment generates, uses and can radiate radio frequency energy and, if not installed and used in accordance with the instructions, may cause harmful interference to radio communications. However, there is no guarantee that interference will not occur in a particular installation. If this equipment does cause harmful interference to radio or television reception, which can be determined by turning the equipment off and on, the user is encouraged to try to correct the interference by one or more of the following measures:

- Reorient or relocate the receiving antenna.
- Increase the separation between the equipment and receiver.
- Connect the equipment into an outlet on a circuit different from that to which the receiver is connected.
- Consult the dealer or an experienced radio/TV technician for help

Changes or modifications not expressly approved by the party responsible for compliance.

May cause interference and void the user's authority to operate the equipment. This device complies with Part 15 of the FCC Rules. Operation is subject to the following two conditions: (1) This device may not cause harmful interference, and (2) this device must accept any interference received, including interference that may cause undesired operation.