

vifa

STOCKHOLM  
*owner's manual*

## *You've chosen well*

The Vifa Stockholm. A loudspeaker for anyone who values exclusive Nordic design and authentic sound.

It's designed to be intuitive for you to use. This manual just spells out the details - for instance, how to connect wirelessly in a flash.

Enjoy!

# IMPORTANT SAFETY INSTRUCTIONS

## Regulatory Safety Information

- 1 Read these instructions.
- 2 Keep these instructions.
- 3 Heed all warnings.
- 4 Follow all instructions.
- 5 Do not use this apparatus near water.
- 6 Clean only with dry cloth.
- 7 Do not block any ventilation openings. Install in accordance with the manufacturer's instructions.
- 8 Do not install near any heat sources such as radiators, heat registers, stoves, or other apparatus (including amplifiers) that produce heat.
- 9 Do not defeat the safety purpose of the polarized or grounding-type plug. A polarized plug has two blades with one wider than the other. A grounding type plug has two blades and a third grounding prong. The wide blade or the third prong are provided for your safety. If the provided plug does not fit into your outlet consult an electrician for replacement of the obsolete outlet.
- 10 Make sure the power cord is not stepped on or otherwise interfered with, particularly at the mains socket and where it exits the apparatus.
- 11 Only use attachments/accessories specified by the manufacturer.
- 12 Use only with the cart, stand, tripod, bracket or table specified by the manufacturer or sold with the apparatus. When a cart is used, use caution when moving the cart/apparatus combination to avoid injury from tip-over.
- 13 Unplug this apparatus during lightning storms or when unused for long periods of time.
- 14 Refer all servicing to qualified service personnel. Servicing is required when the apparatus has been damaged in any way, such as damage to the power cord or plug, liquid has been spilled or objects have fallen into the apparatus, the apparatus has been exposed to rain or moisture, does not operate normally or has been dropped.
- 15 To completely disconnect unit power from the AC mains, disconnect the unit's power cord from the mains socket.

### WARNING:

- To reduce the risk of fire and electric shock do not expose this apparatus to rain or moisture.
- Do not place objects filled with liquids such as vases on the apparatus.
- Do not open the apparatus. There are no user-serviceable parts inside. Risk of electric shock inside.



The lightning flash and arrow head within the triangle is a warning sign alerting you of dangerous voltage inside the product.



The exclamation point within the triangle is a warning sign alerting you to important instructions accompanying the product.



Use only with the cart, stand, tripod, bracket or table specified by the manufacturer or sold with the apparatus. When a cart is used, use caution when moving the cart/apparatus combination to avoid injury from tip-over.

## IMPORTANT STATEMENTS:

This device complies with Part 15 of the FCC Rules. Its operation is subject to the following two conditions:

1. This device may not cause harmful interference, and
2. This device must accept any interference received, including interference that may cause undesired operation.

Cet appareil est conforme à la section 15 des réglementations de la FCC. Le fonctionnement de l'appareil est sujet aux deux conditions suivantes:

1. Cet appareil ne doit pas provoquer d'interférences néfastes, et
2. Cet appareil doit tolérer les interférences reçues, y compris celles qui risquent de provoquer un fonctionnement indésirable.

Note: This product has been tested and found to comply with the limits for a Class B digital device, pursuant to Part 15 of the FCC Rules. These limits are designed to provide reasonable protection against harmful interference in a residential installation. This product generates, uses, and can radiate radio frequency energy and, if not installed and used in accordance with the instructions, may cause harmful interference to radio communications.

However, there is no guarantee that interference will not occur in a particular installation. If this product does cause harmful interference to radio or television reception, which can be determined by turning the equipment off and on, the user is encouraged to try to correct the interference by one or more of the following measures:

- Reorient or relocate the receiving antenna.
- Increase the separation between the equipment and receiver.
- Connect the equipment into an outlet on a circuit different from that to which the receiver is connected.
- Consult the dealer or an experienced radio/TV technician for help.

Changes or modifications not expressly approved by the party responsible for compliance could void the user's authority to operate the equipment.

This device complies with Industry Canada licence-exempt RSS standard(s).

Operation is subject to the following two conditions:

1. This device may not cause interference, and
2. This device must accept any interference, including interference that may cause undesired operation of the device.

Le présent appareil est conforme aux CNR d'Industrie Canada applicables aux appareils radioexemptés de licence. L'exploitation est autorisée aux deux conditions suivantes :

1. l'appareil ne doit pas produire de brouillage, et
2. l'utilisateur de l'appareil doit accepter tout brouillage radioélectrique subi, même si le brouillage est susceptible d'en compromettre le fonctionnement.

# CE1588

Vifa Denmark A/S  
Mariendalsvej 2A  
DK-8800 - Denmark  
[www.vifa.dk](http://www.vifa.dk)

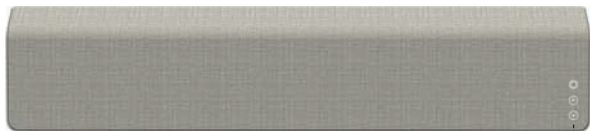
Buttons and indicators on Stockholm.....	6
Status indicator.....	7
The Vifa remote.....	8
Input options.....	10
Connecting priority.....	11

## **Connecting to Stockholm**

<i>Bluetooth</i> .....	12
Wi-Fi Direct.....	13
Wi-Fi Network manual setup.....	14
Wi-Fi Network using an iOS device.....	16
Wi-Fi Network using WPS.....	18
Playback through Wi-Fi.....	19
Wired connection - optical, analog or USB.....	20
Reset and set to factory default.....	21
Vifa app.....	22
Product care.....	23
Troubleshooting.....	24
Specifications.....	25
Register and Trademarks.....	26

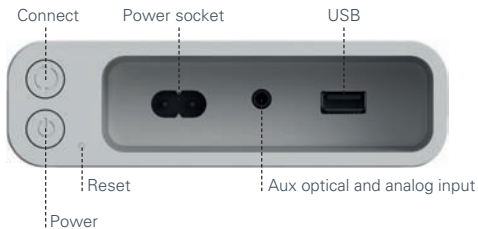
For manuals in other languages, please visit: [www.vifa.dk/support](http://www.vifa.dk/support)

## BUTTONS AND INDICATORS ON STOCKHOLM



*You can change the light intensity of the status indicator using the Vifa app.*

Status indicator  
Volume up  
Volume down



# STATUS INDICATOR

## No light – Stockholm is in standby mode or is off



### Breathing – Stockholm is hibernating

*(Stockholm will automatically go into hibernation after 5 min. without signal)*


To wake up Stockholm press the  POWER button.

- From standby: press until the status indicator flashes WHITE.
- From hibernation: play music on one of the inputs, or briefly press the power or one of the vol. buttons.

### Rapidly flashing – Stockholm is in setup mode

-  WHITE: Wi-Fi setup
-  YELLOW: USB or WPS network setup
-  GREEN: Locking on to wired input

### Constant light – Stockholm is on

-  WHITE: Wi-Fi connection
-  BLUE: *Bluetooth* connection
-  GREEN: Wired connection
-  YELLOW: No connection or signal

*Note: When muted the constant white light is briefly interrupted every three seconds.*

### Slow flashing

-  WHITE: Wi-Fi Direct mode, waiting to start playing

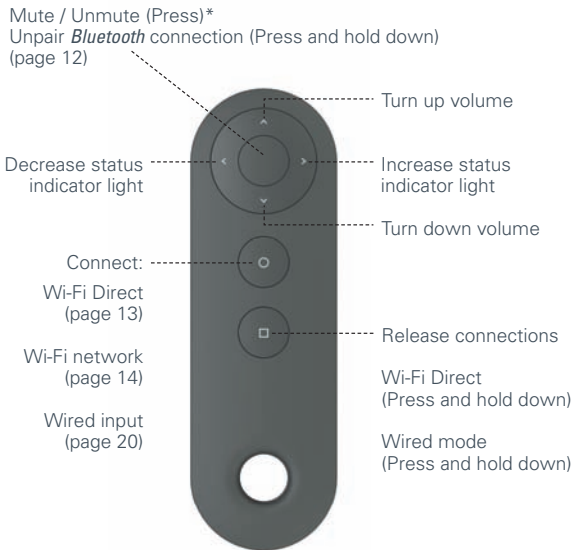
To power down Stockholm press the  POWER button.

- For hibernation: press until the status indicator flashes WHITE once.
- For standby: press until the status indicator flashes WHITE twice.

*Note: Putting Stockholm into hibernation mode will allow you to wake it up rapidly. In standby mode Stockholm will consume less than 0.5 watt from the power outlet.*

## THE VIFA REMOTE

The Vifa remote lets you easily control your Stockholm loudspeaker from anywhere in the room. Turn up the volume of your favorite music or easily set up your Stockholm to your preferred connection, like Wi-Fi Direct, your Wi-Fi network or via wired input.



*\*Note: when the speaker is muted the status indicator light is on every 3rd second it will be briefly interrupted indicating that mute is on.*



## Changing the VIFA remote battery

Replace the battery with a CR2025 battery.

To replace the battery:

1. Use a coin to remove the battery compartment cover.
2. Remove the battery.
3. Insert a CR2025 battery with the positive side facing up.
4. Replace the battery compartment cover and use a coin to tighten it.



## INPUT OPTIONS

- ***Bluetooth***  
Fast and easy and works for virtually every phone, tablet or MAC/PC - supports aptX for Hi-Fi sound.
- **Wi-Fi**  
Works for phones, tablets, MAC/PC Wi-Fi and networked DLNA enabled devices - supports Wi-Fi Direct.
- **Wired optical or analog**  
For music players, media players or televisions.
- **Wired USB**  
USB playback works for iOS. USB will charge your device.

## CONNECTING PRIORITY

Stockholm automatically selects input for you based on the following rules.

**1. 1st priority is Wi-Fi and USB**

If Wi-Fi or USB is connected and playing music, other connections are disconnected.

**2. 2nd priority is *Bluetooth***

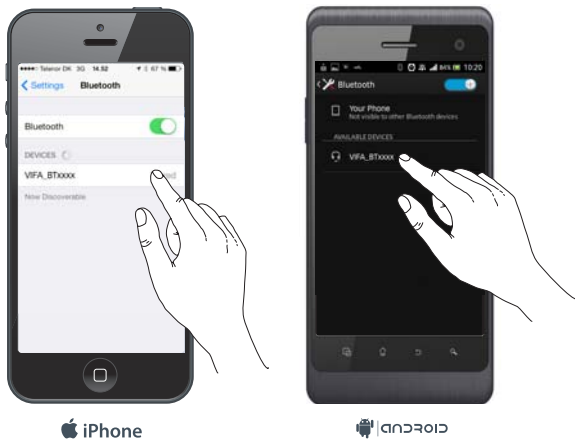
If *Bluetooth* is connected and playing music, a wired analog or optical connection will be disconnected.

**3. 3rd priority is wired**

When no *Bluetooth*, USB or Wi-Fi is used, you can use the wired input. You can, however, lock Stockholm to wired input, look for further information on page 20.

## CONNECTING WITH *BLUETOOTH*

*Fast and easy wireless connection for virtually every phone*



1. Enable **Bluetooth** pairing on your device and select Vifa BTxxxxxx as your **Bluetooth** device.
2. Let the music play, the status indicator turns BLUE when Stockholm receives the music.
3. Adjust the volume on Stockholm, with the remote or your device.

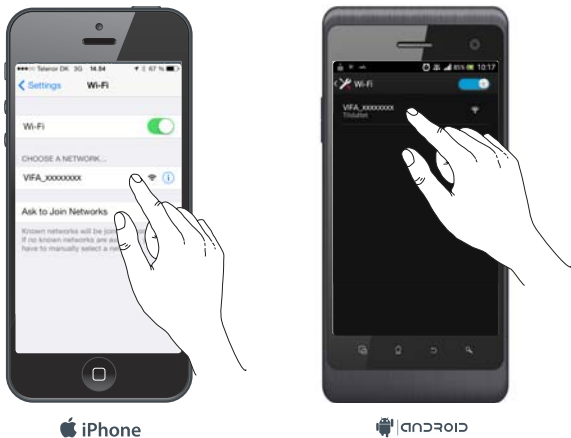
*Note: Release of the Bluetooth pairing can be done either on the paired device, on Stockholm or with the Stockholm remote. On Stockholm press the "Volume up" and "Volume down" button simultaneously until the indicator flashes BLUE three times. On the remote hold down the "Mute/Unmute" button until the indicator flashes BLUE three times.*

*Page 13: Note\*: Internet connection in Wi-Fi Direct mode will have to come from the mobile network. ►*

*Page 13: Note \*\*: You can release Stockholm from Wi-Fi Direct mode - by pressing the  CONNECT button briefly. ►*

# CONNECTING WITH Wi-Fi DIRECT

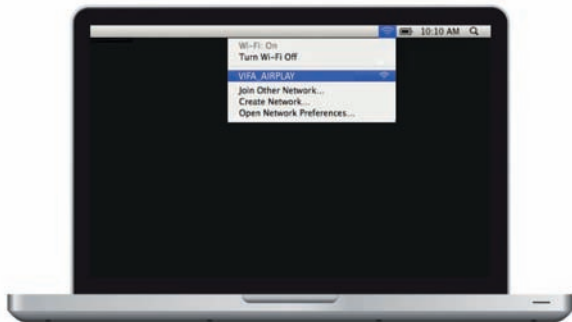
*For AirPlay and DLNA direct playback*





- 1.1 On Stockholm: Press and hold the **CONNECT** button until the status indicator flashes **WHITE** rapidly and then release the **CONNECT** button – the indicator will now start to pulse until it receives a music signal.
- 1.2 With the remote: Press and hold the **CONNECT** button until the status indicator flashes **WHITE** rapidly and then release the **CONNECT** button – the indicator will now start to pulse until it receives a music signal.
2. Find Wi-Fi network settings on your device.
3. Select the network called VIFA\_..... (No password required)
4. Play music on your device – the status indicator turns solid **WHITE** when Stockholm receives the music.

# CONNECTING TO YOUR Wi-Fi NETWORK

*Manual setup*



- 1.1 On Stockholm: Press and hold the  CONNECT button until the status indicator flashes WHITE rapidly and then release the  CONNECT button – the indicator will now start to pulse until it receives a music signal.
- 1.2 With the remote: Press and hold the  CONNECT button until the status indicator flashes WHITE rapidly and then release the  CONNECT button – the indicator will now start to pulse until it receives a music signal.
2. Find Wi-Fi network settings on your device.
3. Select the network called VIFA\_..... (No password required)
4. On your device open the browser (e.g. Safari or Internet Explorer) and enter 192.168.1.1 in the address line, and press enter.



5. Now the Stockholm setup page open up.
6. Choose your preferred network and enter the password if needed. Then type in the name you want displayed for Stockholm on the network ex. "Stockholm Living room".
7. Then press "Apply".
8. When the status indicator turns solid WHITE the connection is established.
9. On your device, remember to change network back to your preferred network.

## CONNECTING TO YOUR Wi-Fi NETWORK

*Using iOS device*



1. Make sure your iOS device is connected to your network.
2. Connect your iOS device to Stockholm using a USB cable.
- 3.1 On Stockholm: Press and hold the **CONNECT** button on Stockholm until the status indicator flashes **YELLOW** rapidly and then release the **CONNECT** button.










- 3.2 With the remote: Press and hold the  CONNECT button until the status indicator flashes YELLOW rapidly and then release the  CONNECT button.
4. The iOS device will ask you if it may transfer network settings to the speaker. Press Allow on the iOS device.
5. When the status indicator on Stockholm turns solid WHITE, the connection is established.

# CONNECTING TO YOUR Wi-Fi NETWORK

*Using WPS*



1. Press  WPS button on your router.
- 2.1 On Stockholm: Press and hold the  CONNECT button until the status indicator flashes YELLOW rapidly and then release the  CONNECT button.
- 2.2 With the remote: Press and hold the  CONNECT button until the status indicator flashes YELLOW rapidly and then release the  CONNECT button.
3. When the status indicator on Stockholm turns solid WHITE, the connection is established.

## PLAYBACK THROUGH Wi-Fi

Connect your playback device and Stockholm to the same Wi-Fi network - and playback is simple, choose Stockholm as sound device or renderer on your playback device.



For iOS device just press the AirPlay logo and choose Stockholm.

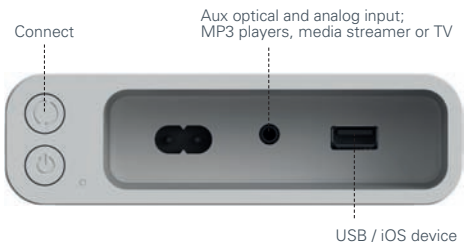
Using iTunes on a MAC/PC, you can stream music through your preferred network to multiple Vifa Stockholms simultaneously. You can even remote control iTunes with a free Apple remote app. In this way you can control the music stream from iTunes to multiple Vifa Stockholms with your iPhone, iPod or iPad.

## LIVE STREAMING

We recommend that you connect Stockholm to your preferred Wi-Fi network when possible. This gives you access to Wi-Fi streaming within your entire Wi-Fi network range, and allows you to have stable streaming from internet radio services or music services.

Please note: When streaming from the internet the playback quality will depend on your internet connection. If the connection is slow, dropouts may occur. Also be aware that internet connection can be expensive when using a mobile phone.

## WIRED CONNECTION



- On the rear of Stockholm, the 3.5 mm mini-jack auxiliary input will support both an analog signal and an optical input with a digital data stream up to 24bit/192kHz.

### TO LOCK ON TO WIRED INPUT

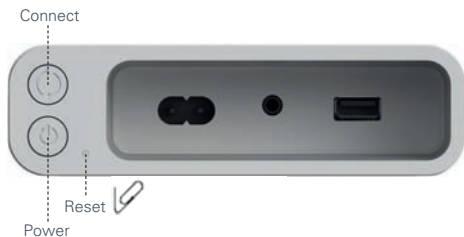
- A1. On Stockholm: Press and hold the  CONNECT button, until the status indicator flashes rapidly GREEN and then release.
- A2. With the remote: Press and hold the  CONNECT button, until the status indicator flashes rapidly GREEN and then release.

### TO RELEASE THE LOCKED WIRED INPUT

- B1. On Stockholm: Briefly press the  CONNECT button, then the status indicator will flash GREEN three times and normal input priority is restored.
- B2. With the remote: Briefly press the  CONNECT button, then the status indicator will flash GREEN three times and normal input priority is restored.

*You can use USB as a playback input from your iOS device. Stockholm will charge your iOS device simultaneously.*

## RESET AND SET TO FACTORY DEFAULT



### RESET

- MAY BE USED IF STOCKHOLM FREEZES

To reset Stockholm, briefly press the reset button  
- no user settings will be lost.

### FACTORY DEFAULT

- RESETS STOCKHOLM'S SOFTWARE TO FACTORY SETTINGS

To factory default Stockholm: press and hold the  
Ⓞ POWER and the Ⓞ CONNECT button simultaneously  
until the status indicator starts triple flashing WHITE.  
Release the buttons and Stockholm will go to factory default  
- after factory default ALL USER SETTINGS WILL BE LOST.

To firmware update Stockholm, please go to  
[www.Vifa.dk/support](http://www.Vifa.dk/support) for further information.

## THE VIFA APP

To get the most out of your Vifa Stockholm, download the free Vifa app. You can find links to the app under "support" on the Vifa website.

The Vifa app allows you to:

- Adjust the sound to your preferred taste or surroundings
- Change the name that Stockholm will show on the Wi-Fi network
- Change the network settings on Stockholm
- Manage your inputs on Stockholm
- Adjust the light intensity of the "status indicator"



[www.vifa.dk/support](http://www.vifa.dk/support)

## PRODUCT CARE



This product is designed for premium music performance in normal living space. Exposure to rain, moisture, high humidity or sources of heat may damage the product. The intended use is within a temperature range of 5 - 40 °C (40 - 105 °F).

### CLEANING

Your Vifa product is covered by beautiful highly durable textile from Kvadrat. Remove non-greasy stains by carefully dabbing with a lint-free cloth or use a lint roller to remove lint from the textile.



**Never use a vacuum cleaner, this can cause damage to the loudspeaker units behind the textile.**

## TROUBLESHOOTING

In the extreme case that Stockholm is pushed to overheating, the status indicator lights RED constantly - please unplug the power cord and wait for approximately 5 min. before plugging in Stockholm and powering it up again.



**Here you can find further support  
on our Vifa products:  
[www.vifa.dk/support](http://www.vifa.dk/support)**



## SPECIFICATIONS

Description	Wireless loudspeaker
Technical features	<b>Bluetooth</b> aptX Wi-Fi Direct Apple AirPlay Works with DLNA DSP signal processing Force Balanced Woofers Digital pure path amplifiers
Drive units	
Tweeter	2 X 28 mm Vifa drive units with soft dome and neodymium magnet.
Midrange	2 X 80 mm Vifa drive units with aluminium cone and neodymium magnet.
Woofer	4 X 100 mm Vifa drive units with flat sandwich cone and neodymium magnet. Mounted mechanically back to back in a force balanced configuration supported by 4 passive radiators.
Frequency response	42Hz - 20kHz @ +/- 3 dB
Input voltage	100 Volt - 240 Volt 50/60 Hz
Max. Rated power consumption	150 watt
Standby power consumption	Less than 0.5 watt
Output	USB 5 volt / 2.1 A
Inputs	<b>Bluetooth</b> aptX Wi-Fi Direct Wi-Fi networked Wired optical or analog (3.5 mm minijack) Wired USB (only iOS device at present)
Dimensions Height/Width/Depth	215 mm / 1100 mm / 100 mm
Net weight	9.8 kg
Frame	Diecast aluminium
Textile	Custom made Kvadrat textile

## REGISTER AND TRADEMARKS



**We encourage you to register your product at:**  
**[www.vifa.dk/register](http://www.vifa.dk/register)**

*A Vifa product is in compliance with **CE** directives of relevance, including RoHS directive – see product label for more regional regulatory approvals.*

---



Made for iPhone 5s, iPhone 5c, iPhone 5, iPhone 4s, iPhone 4, iPhone 3GS, iPhone 3, iPad AIR, iPad (3rd and 4th generation), iPad 2, iPad, iPad mini with Retina display, iPad mini, iPod touch (1st through 5th generation), iPod classic, and iPod nano (1st through 7th generation).

AirPlay works with iPhone, iPad and iPod touch with iOS 4.3.3 or later, Mac with OS X Mountain Lion or later, and PC with iTunes 10.2.2 or later.

USB works with iPhone 5s, iPhone 5c, iPhone 5, iPhone 4s, iPhone 4, iPhone 3GS, iPhone 3, iPad AIR, iPad (3rd and 4th generation), iPad 2, iPad, iPad mini with Retina display, iPad mini, iPod touch (1st through 5th generation), iPod classic, and iPod nano (1st through 7th generation).

AirPlay, iPad, iPhone, iPod, iPod classic, iPod nano, iPod touch, and Retina are trademarks of Apple Inc., registered in the U.S. and other countries. iPad Air, iPad mini, and Lightning are trademarks of Apple Inc.

“Made for iPod”, “Made for iPhone” and “Made for iPad” mean that an electronic accessory has been designed to connect specifically to iPod, iPhone, or iPad, respectively, and has been certified by the developer to meet Apple performance standards. Apple is not responsible for the operation of this device or its compliance with safety and regulatory standards. Please note that the use of this accessory with iPod, iPhone, or iPad may affect wireless performance.



The Wi-Fi Certified Logo is a certification mark of the Wi-Fi Alliance.



The *Bluetooth* logo, the *Bluetooth* name and the combination are trademarks owned by *Bluetooth* SIG Inc.



© 2013 CSR pic and its group companies. The aptX® mark and the aptX logo are trade marks of CSR pic or one of its group companies and may be registered in one or more jurisdictions.

For more information please visit our website at  
[www.vifa.dk](http://www.vifa.dk)