

vifa



**OSLO**

Owner's Manual

# IMPORTANT SAFETY INSTRUCTIONS

## Regulatory Safety Information

- 1 Read these instructions.
- 2 Keep these instructions.
- 3 Heed all warnings.
- 4 Follow all instructions.
- 5 Do not use this apparatus near water.
- 6 Clean only with dry cloth.
- 7 Do not block any ventilation openings. Install in accordance with the manufacturer's instructions.
- 8 Do not install near any heat sources such as radiators, heat registers, stoves, or other apparatus (including amplifiers) that produce heat.
- 9 Do not defeat the safety purpose of the polarized or grounding-type plug. A polarized plug has two blades with one wider than the other. A grounding type plug has two blades and a third grounding prong. The wide blade or the third prong are provided for your safety. If the provided plug does not fit into your outlet consult an electrician for replacement of the obsolete outlet.
- 10 Make sure the power cord is not stepped on or otherwise interfered with, particularly at the mains socket and where it exits the apparatus.
- 11 Only use attachments/accessories specified by the manufacturer.
- 12 Use only with the cart, stand, tripod, bracket or table specified by the manufacturer or sold with the apparatus. When a cart is used, use caution when moving the cart/apparatus combination to avoid injury from tip-over.
- 13 Unplug this apparatus during lightning storms or when unused for long periods of time.
- 14 Refer all servicing to qualified service personnel. Servicing is required when the apparatus has been damaged in any way, such as damage to the power cord or plug, liquid has been spilled or objects have fallen into the apparatus, the apparatus has been exposed to rain or moisture, does not operate normally or has been dropped.
- 15 To completely disconnect unit power from the AC mains, disconnect the unit's power cord from the mains socket.

### WARNING:

- To reduce the risk of fire and electric shock do not expose this apparatus to rain or moisture.
- Do not place objects filled with liquids such as vases on the apparatus.
- Do not open the apparatus. There are no user-serviceable parts inside. Risk of electric shock inside.



The lightning flash and arrow head within the triangle is a warning sign alerting you of dangerous voltage inside the product.



The exclamation point within the triangle is a warning sign alerting you to important instructions accompanying the product.



- 12 Use only with the cart, stand, tripod, bracket or table specified by the manufacturer or sold with the apparatus. When a cart is used, use caution when moving the cart/apparatus combination to avoid injury from tip-over.



## IMPORTANT STATEMENTS

This device complies with Part 15 of the FCC Rules. Its operation is subject to the following two conditions:

1. This device may not cause harmful interference, and
2. This device must accept any interference received, including interference that may cause undesired operation.

Cet appareil est conforme à la section 15 des réglementations de la FCC. Le fonctionnement de l'appareil est sujet aux deux conditions suivantes:

1. Cet appareil ne doit pas provoquer d'interférences néfastes, et
2. Cet appareil doit tolérer les interférences reçues, y compris celles qui risquent de provoquer un fonctionnement indésirable.

Note: This product has been tested and found to comply with the limits for a Class B digital device, pursuant to Part 15 of the FCC Rules. These limits are designed to provide reasonable protection against harmful interference in a residential installation. This product generates, uses, and can radiate radio frequency energy and, if not installed and used in accordance with the instructions, may cause harmful interference to radio communications.

However, there is no guarantee that interference will not occur in a particular installation. If this product does cause harmful interference to radio or television reception, which can be determined by turning the equipment off and on, the user is encouraged to try to correct the interference by one or more of the following measures:

- Reorient or relocate the receiving antenna.
- Increase the separation between the equipment and receiver.
- Connect the equipment into an outlet on a circuit different from that to which the receiver is connected.
- Consult the dealer or an experienced radio/TV technician for help.

Changes or modifications not expressly approved by the party responsible for compliance could void the user's authority to operate the equipment.

This device complies with Industry Canada licence-exempt RSS standard(s).

Operation is subject to the following two conditions:

1. This device may not cause interference, and
2. This device must accept any interference, including interference that may cause undesired operation of the device.

Le présent appareil est conforme aux CNR d'Industrie Canada applicables aux appareils radioexemptés de licence. L'exploitation est autorisée aux deux conditions suivantes :

1. l'appareil ne doit pas produire de brouillage, et
2. l'utilisateur de l'appareil doit accepter tout brouillage radioélectrique subi, même si le brouillage est susceptible d'en compromettre le fonctionnement.



Vifa Denmark A/S  
Mariendalsvej 2A  
DK-8800 - Denmark  
[www.vifa.dk](http://www.vifa.dk)



Product Care .....	6
--------------------	---

## **Oslo Functions**

Buttons and indicators on Oslo.....	8
Mode button & Status indicator.....	9

Battery charge .....	10
----------------------	----

## **Connecting to Oslo**

Connecting with <i>Bluetooth</i> .....	12
Connecting with <i>Bluetooth</i> - NFC .....	13
Wired connection .....	14

## **Troubleshooting**

Factory Default .....	16
Oslo Reset.....	17

Specifications .....	19
Support .....	20
Trademarks .....	21



*For manuals in other languages please visit [www.vifa.dk/support](http://www.vifa.dk/support)*

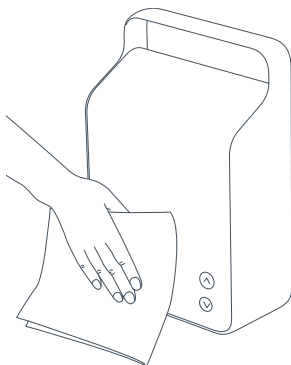
## *You've chosen well*

Vifa Oslo. A loudspeaker for anyone who values exclusive Nordic design and authentic sound.

Designed to be intuitive for you to use, this manual just spells out the details - for instance, how to connect wirelessly in a flash.

Enjoy!

## PRODUCT CARE



Oslo is built for a long-lasting relationship. In order to ensure the quality music performance please ensure no exposure to rain, moisture, high humidity or sources of heat that may damage the product. The intended use is within a temperature range of 5 - 40 °C (40 - 105 °F).

### Cleaning

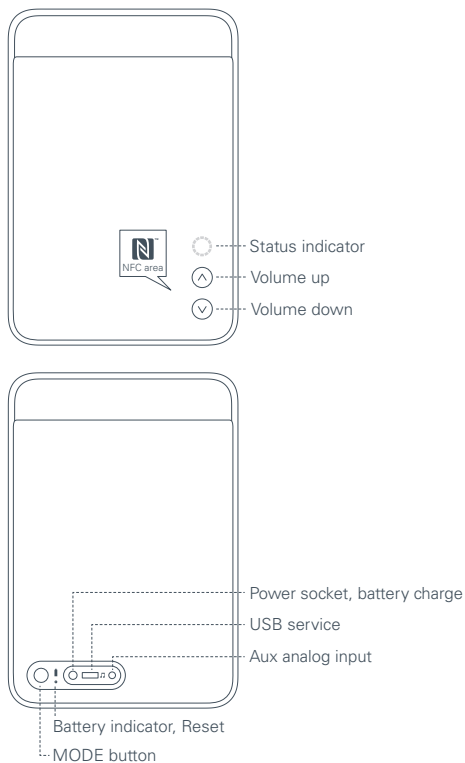
Your Vifa product is covered by beautiful highly durable textile from Kvadrat. Remove non-greasy stains by carefully dabbing with a lint-free cloth or use a lint roller to remove lint from the textile.



*Never use a vacuum cleaner, this can cause damage to the loudspeaker units behind the textile.*

# OSLO FUNCTIONS

## BUTTONS AND INDICATORS ON OSLO





## MODE BUTTON & STATUS INDICATOR

### Turn Oslo ON

Press and hold the MODE button until the status indicator turns solid YELLOW.





### Turn Oslo OFF

Press and hold the MODE button until the status indicator flashes YELLOW. Then release.

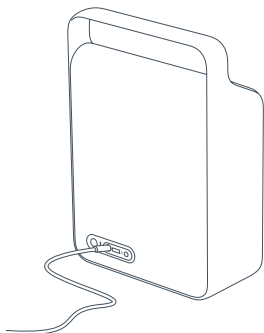
### Oslo SLEEP mode

If no signal input or no button is being pressed for 3 minutes, Oslo goes into SLEEP mode, meaning the status indicator will pulsate.

### Status Indicator

-  BLUE - Bluetooth connection
-  GREEN - AUX connection
-  RED - Fault indications
-  YELLOW - No connections active

## BATTERY CHARGE



A full charge will take 3-4 hours. Please charge Oslo for more than 4 hours the first time you charge it. Keep Oslo plugged in when near power outlet. The intelligent power management will keep battery in perfect condition.

When charging you can see the progress,



### **Low**

Battery level below 5% RED



### **Medium**

Battery level between 5 and 80% YELLOW

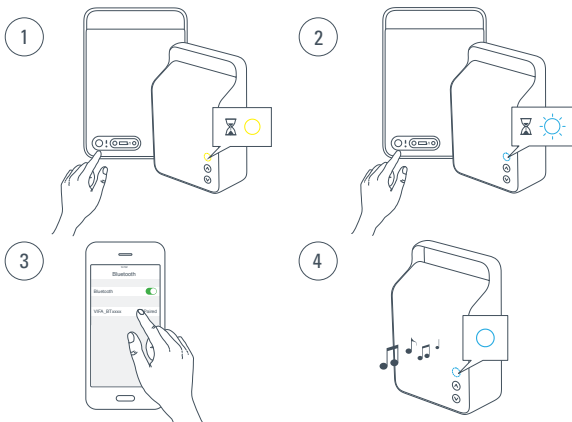


### **Full**

Battery level above 80% GREEN

# CONNECTING TO OSLO

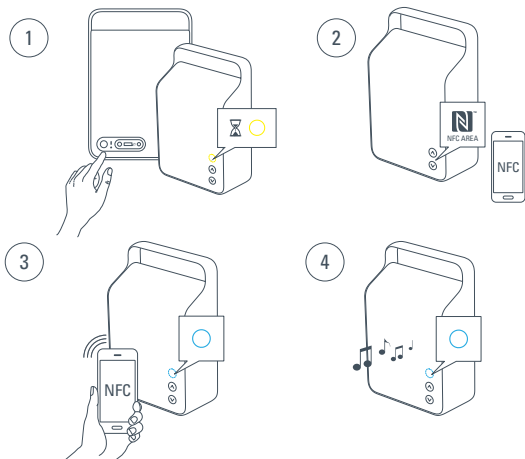
## CONNECTING WITH *BLUETOOTH*



1. To turn Oslo on, press and hold the MODE button until status indicator turns on.
2. Press and hold the MODE button until status indicator flashes BLUE.
3. Enable *Bluetooth* pairing on your device and select Vifa BTxxxx as your *Bluetooth* device.
4. The status indicator turns solid BLUE when a connection is established. Let the music play.

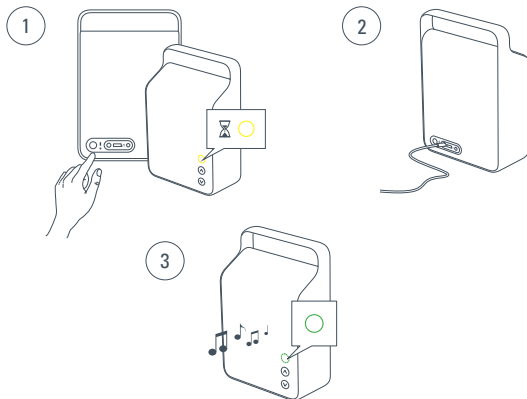
## CONNECTING WITH *BLUETOOTH - NFC*

*Only for NFC enabled devices*



1. To turn Oslo on, press and hold the MODE button until status indicator turns on.
2. The NFC area of Oslo is placed by the volume buttons.
3. Activate NFC function on your device. Place NFC enabled device on NFC area and accept pairing on your device.
4. The status indicator turns solid BLUE when a connection is established. Let the music play.

## WIRED CONNECTION



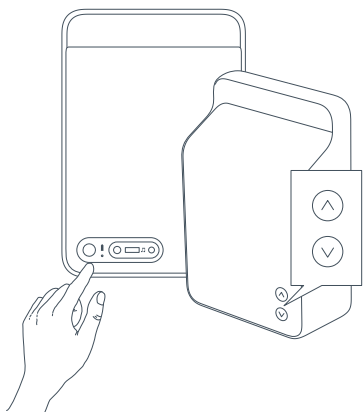
1. To turn Oslo ON press and hold the MODE button until status indicator turns on.
2. Connect the wire on the back side and start music playback from your device.
3. The status indicator turns solid GREEN when wired playback is enabled.



*Oslo prefers Bluetooth over AUX. But briefly pressing the MODE button the connection will switch from Bluetooth to AUX. Pressing it again turns it back to normal priority.*

# TROUBLESHOOTING

## FACTORY DEFAULT



### **Factory default**

Resets Oslo's software to factory settings

To factory default Oslo, press and hold the MODE button and the volume up and volume down buttons simultaneously until the status indicator turns red.

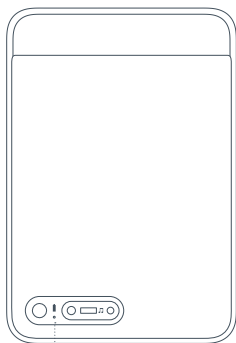
Release the buttons and Oslo will go to factory default. Please note that after factory default ALL USER SETTINGS WILL BE LOST.



*To update Oslo's firmware, please go to [www.vifa.dk/support](http://www.vifa.dk/support) for further information.*



## OSLO RESET



Reset 

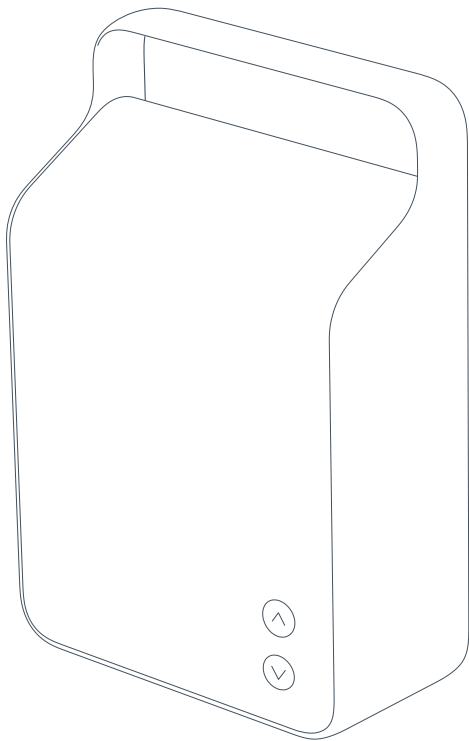
### **Reset**

May be used if Oslo freezes.

To reset Oslo, briefly press the reset button - no user settings will be lost.



*If you experience issues that are not described in this manual, please refer to [www.vifa.dk/support](http://www.vifa.dk/support)*



# SPECIFICATIONS

Description	Portable wireless loudspeaker
Technical features	<i>Bluetooth</i> 4.0 aptX AUX 3.5 mm mini-jack NFC Lithium Ion battery Force Balanced Woofers DSP crossover, optimized for low distortion and high precision 4 channel digital PurePath amplifier
Drive Units	
Full-range	2 X 50 mm Vifa driver unit with aluminum cone and neodymium magnet
Woofer	2 x 65 mm Vifa drive units with flat sandwich cone and neodymium magnet. Mounted mechanically back to back in a force balanced configuration supported by 2 passive radiators.
Frequency response	55 Hz – 18 kHz @ +/- 3 dB
Input voltage, wall adaptor	100 Volt - 240 Volt 50/60 Hz 1500mA Max
Input voltage, loudspeaker	18VDC,2500mA
Standby power consumption	Less than 0.5 watt when battery is fully charged.
Inputs	<i>Bluetooth</i> aptX AUX 3.5 mm mini-jack.
Dimensions Height/Width/Depth	268 mm / 181 mm / 90 mm
Net weight	2,4 kg
Frame	One piece diecast aluminium
Enclosure	Reinforced ABS
Grilles	Custom made Kvadrat textile



# SUPPORT

## **Vifa App**

An app will be available for your Vifa Oslo.

More info will be announced on [www.vifa.dk/support](http://www.vifa.dk/support)

## **Register your Oslo**

We encourage you to register your product at [www.vifa.dk/support](http://www.vifa.dk/support)

## TRADEMARKS

*A Vifa product is in compliance with CE directives of relevance, including RoHS directive – Vifa declaration of conformity can be found and downloaded from: [www.vifa.dk/support](http://www.vifa.dk/support) - see product label for more regional regulatory approvals.*

---



The NFC Forum has developed the “N-mark” trademark as a universal symbol for Near field communication.



The *Bluetooth* logo, the *Bluetooth* name and the combination are trademarks owned by *Bluetooth* SIG Inc.



© 2013 CSR pic and its group companies. The aptX® mark and the aptX logo are trade marks of CSR pic or one of its group companies and may be registered in one or more jurisdictions.

For more information please visit our website at  
[www.vifa.dk](http://www.vifa.dk)