

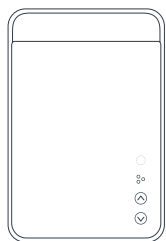
vifa

OSLO 2.0

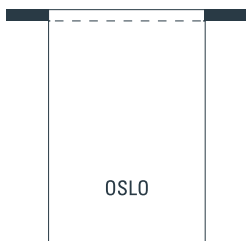
In the Box	2	Vifa® PLAY	35
Buttons and Indicators	3	Vifa® LINK	43
Status Indicator	5	Charging	48
Connect and Disconnect	7	Power Bank	52
Wi-Fi	15	Factory Settings	53
Bluetooth	23	Reset	55
AUX 3.5mm/Optical audio cable	31	Software Update	57

English	60
Deutsch	69
Français	78
Dansk	87
简体中文	96
繁體中文	104
한국어	112
にほんご	121

In the Box



①



②



③



④



⑤



KO



UK



EU



CN



US

⑥

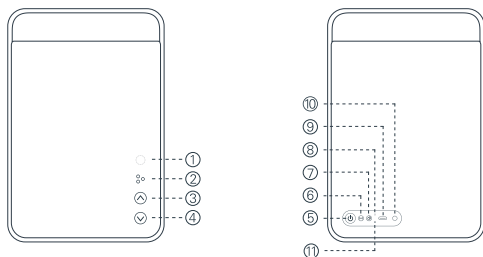
- EN:** ① Vifa Oslo 2.0 ② Travel bag ③ AUX 3.5mm audio cable
 ④ Type-C cable ⑤ User manual ⑥ Adapter

*Only a adapter that meets the local safety standards in the packaging.

- CN:** ① Vifa Oslo 2.0 ② 旅行袋 ③ AUX 3.5mm音频线
 ④ Type-C线 ⑤ 用户指南 ⑥ 适配器

*包装中仅提供符合当地安全标准的适配器。

Buttons and Indicators



EN:

- ① Status indicator
- ② Vifa® Play
- ③ Volume+
- ④ Volume-
- ⑤ Power button
- ⑥ Connect button
- ⑦ Vifa® Link
- ⑧ Battery indicator
- ⑨ Type-C interface
- ⑩ AUX/Optical analog input
- ⑪ Restart button

CN:

- ① 状态指示灯
- ② Vifa® Play
- ③ 音量加键
- ④ 音量减键
- ⑤ 电源键
- ⑥ Connect键
- ⑦ Vifa® Link
- ⑧ 电池指示灯
- ⑨ Type-C接口
- ⑩ AUX/光纤模拟输入
- ⑪ 重启键

Status Indicator

EN:

White - White-Wi-Fi connected/Vifa® Link, connected, Vifa® Play connected or standby

Blue - Bluetooth connected

Green - Spotify connected

Orange - AUX or optical fiber connected

Red - System software update/Vifa® Play connection failed

CN:

白色 — Wi-Fi连接、Vifa® Play连接、Vifa® Link连接或待机

蓝色 — 蓝牙连接

绿色 — Spotify连接

橙色 — AUX或光纤连接

红色 — 系统软件更新 / Vifa® Play连接失败

Connect and Disconnect

EN:

Turn on Oslo

Press and hold the power button until the status indicator flashes quickly in white; release the power button, and wait for one minute until the product is ready, and then Oslo will enter the network set-up mode.

Turn off Oslo

Press and hold the power button until the status indicator flashes quickly in white and the shutdown prompt sounds.

Sleep Mode

If there is no signal input within 5 minutes, Oslo will enter the sleep mode, and the status indicator will flash slowly. If there is no signal input within 55 minutes, Oslo will be automatically turned off.

Network-Forbidden Mode

Press and hold the power button and Vifa Link button at the same time, the status indicator will flash in orange, and Oslo will enter the network-forbidden mode. At this time, Bluetooth and Wi-Fi functions are disabled, and only AUX or optical fiber connection is supported.

Wi-Fi Connection

Short press the Connect button until the status indicator turns white. Then, enter the Wi-Fi connection (When Oslo is powered on for the first time, the default is Wi-Fi connection).

Bluetooth Connection

Short press the Connect button until the status indicator turns blue. Then, enter Bluetooth connection.

AUX 3.5mm/Optical Audio Cable Connection

Short press the Connect button until the status indicator turns orange. Then, enter the AUX 3.5mm/Optical audio cable connection

Vifa® Play

Wi-Fi connection; long press Vifa® Play until the status indicator turns white. Then, enter Vifa® Play model to play your favorite music or radio.

Vifa® Link

Wi-Fi connection; short press Vifa® Link until the status indicator turns white. Then, enter Vifa® Link model to connect to multiple Vifa stereos.

CN:

开启 Oslo

长按电源键，状态指示灯白色快闪，等待一分钟直到产品准备好，Oslo进行配网。

关闭 Oslo

长按电源键，状态指示灯白色快闪，关机提示音响起。

休眠模式

如果5分钟内无信号输入，Oslo即进入休眠模式；休眠模式下，如果55分钟内无信号输入，Oslo即关机。

禁网模式

长按电源键和Vifa® Link，状态指示灯呈橙色闪烁，Oslo即进入禁网模式，此时Bluetooth和Wi-Fi功能禁用，只支持AUX或光纤连接。

Wi-Fi连接

短按Connect键至状态指示灯呈白色，进入Wi-Fi连接（首次开启Oslo默认为Wi-Fi连接）。

Bluetooth连接

短按Connect键至状态指示灯呈蓝色，进入Bluetooth连接。

AUX 3.5mm/Optical Audio Cable连接

短按Connect键至状态指示灯呈橙色，进入AUX 3.5mm/Optical audio cable连接。

Vifa® Play

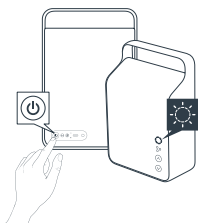
Wi-Fi连接，长按Vifa® Play，状态指示灯呈白色，进入Vifa® Play模式，播放喜爱的音乐或电台。

Vifa® Link

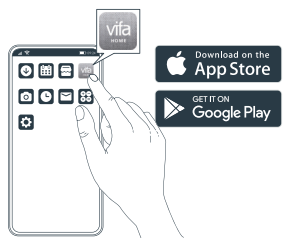
Wi-Fi连接，短按Vifa® Link，状态指示灯呈白色，进入Vifa® Link模式，连接多台Vifa音响。

Wi-Fi

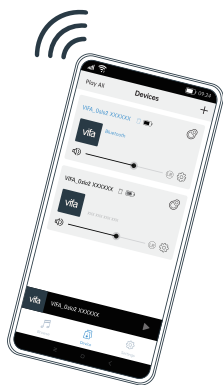
1



2



3



EN:

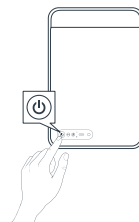
Function	Operation Method
Download APP	Download Vifa® HOME APP from Apple Store, Google Play or www.vifa.dk Please download the instructions for use of Vifa® HOME APP from www.vifa.dk
Connect Wi-Fi for the first time	Press and hold the power button until the status indicator flashes quickly in white. Release the power button, Oslo will enter the network set-up mode, and the status indicator will flash in white. Connect the mobile device to Wi-Fi and open the APP, and connect VIFA_Oslo2 XXXXXX to the same network according to the APP's instructions. When the connection is successful, the status indicator will be always on in white, and the connection success prompt will sound.
Reconnect Wi-Fi	When Oslo needs to connect to a new network, press and hold the Connect button when Oslo is in the Wi-Fi mode, the status indicator will flash in white, and Oslo will enter the network set-up mode. Connect the mobile device to Wi-Fi, open the APP, and connect VIFA_Oslo2 XXXXXX to the same network. When the connection is successful, the status indicator will be always on in white, and the connection success prompt will sound.
Play/Pause	Press Vifa® Play
Volume +	Press the Volume+ button (press and hold the Volume+ button to quickly raise the volume)
Volume -	Press the Volume- button (press and hold the Volume- button to quickly lower the volume)
Last song	Press Vifa® Play three times
Next song	Press Vifa® Play twice

CN:

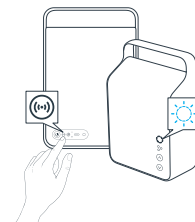
功能	操作方法
下载 APP	从 Apple Store、Google Play 或 www.vifa.dk 下载 Vifa® HOME APP Vifa® HOME APP 的使用说明请从 www.vifa.dk 下载。
首次 连接 Wi-Fi	长按电源键，直到状态指示灯呈白色快闪，松开电源键，Oslo 进入配网模式，状态指示灯呈白色闪烁，将移动设备连接至 Wi-Fi 并打开 APP，按照 APP 指引将 VIFA_Oslo2 XXXXXX 连接至同一网络下，成功后状态指示灯呈白色长亮，连接成功提示音响起。
重新 连接 Wi-Fi	Oslo 需要连接新的网络时，请使 Oslo 在 Wi-Fi 模式下，长按 Connect 键，状态指示灯呈白色闪烁，Oslo 进入配网模式。将移动设备连接至 Wi-Fi 并打开 APP，将 VIFA_Oslo2 XXXXXX 连接至同一网络下，成功后状态指示灯呈白色长亮，连接成功提示音响起。
播放 / 暂停	短按 Vifa® Play
增大音量	短按音量加键 (长按音量加键，快速调高音量)。
减小音量	短按音量减键 (长按音量减键，快速调低音量)。
上一曲	三按 Vifa® Play
下一曲	两按 Vifa® Play

Bluetooth

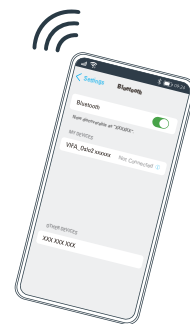
1



2



3



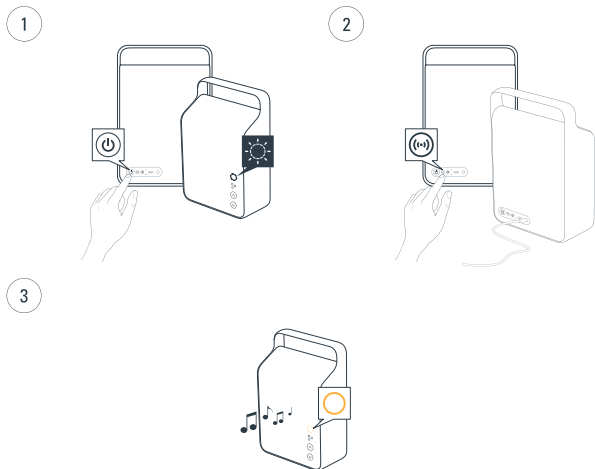
EN:

Function	Operation Method
Connect via Bluetooth	Press and hold the power button until the status indicator flashes quickly in white, and then release it. After the status indicator changes from flashing quickly to flashing, press the Connect button, so that the status indicator flashes in blue. Find the Bluetooth function on the mobile device, and select VIFA_Oslo2 XXXXXX in the device list. After the connection is established, the status indicator will be always on in blue, and the connection success prompt will sound. The connection is successful.
Reconnect the Bluetooth device	When Oslo needs to connect a new Bluetooth device, please make Oslo in the Bluetooth mode first. Press and hold the Connect button, and the status indicator will flash in blue. Find the Bluetooth function on the device, and select VIFA_Oslo2 XXXXXX in the device list. After the connection is established, the status indicator will be always on in blue, and the connection success prompt will sound, which indicates that the connection is successful.
Play/Pause	Press Vifa® Play
Volume +	Press the Volume+ button (press and hold the Volume+ button to quickly raise the volume)
Volume -	Press the Volume- button (press and hold the Volume- button to quickly lower the volume)
Last song	Press Vifa® Play three times
Next song	Press Vifa® Play twice

CN:

功能	操作方法
连接蓝牙	长按电源键至状态指示灯白色快闪后松开，待状态指示灯由快闪变为闪烁后，短按 Connect 键，使状态指示灯呈蓝色闪烁，在移动设备上找到 Bluetooth 功能，在设备列表中选择 VIFA_Oslo2 XXXXXX，连接建立后状态指示灯呈蓝色长亮，连接成功提示音响起，连接成功。
重新连接蓝牙设备	Oslo 需要连接新蓝牙设备时，请使 Oslo 在蓝牙模式下，长按 Connect 键，状态指示灯呈蓝色闪烁，在设备上找到 Bluetooth 功能，在设备列表中选择 VIFA_Oslo2 XXXXXX，连接建立后状态指示灯呈蓝色长亮，连接成功提示音响起，连接成功。
播放 / 暂停	短按 Vifa® Play
增大音量	短按音量加键（长按音量加键，快速调高音量）。
减小音量	短按音量减键（长按音量减键，快速调低音量）。
上一曲	三按 Vifa® Play
下一曲	两按 Vifa® Play

AUX 3.5mm/Optical audio cable



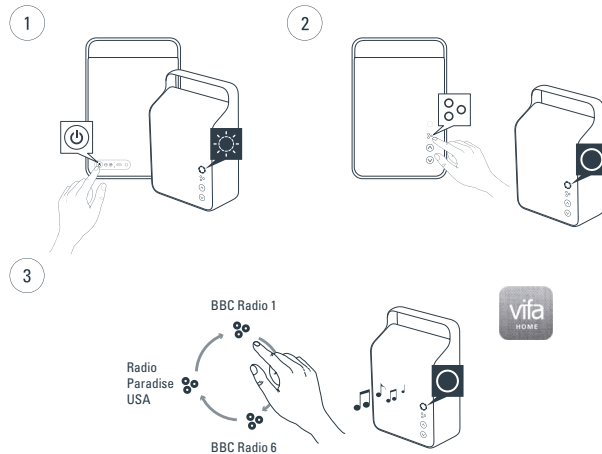
EN:

Function	Operation Method
Connect with AUX 3.5mm audio cable or optical fiber cable	Press and hold the power button until the status indicator flashes quickly in white, and then release it. After the status indicator changes from flashing quickly to flashing, connect your device to Oslo with a 3.5mm audio cable/optical fiber cable. Press the Connect button, and the status indicator will be always on in orange, which indicates that the connection is successful.
Play/Pause	Press Vifa® Play
Volume +	Press the Volume+ button (press and hold the Volume+ button to quickly raise the volume)
Volume -	Press the Volume- button (press and hold the Volume- button to quickly lower the volume)

CN:

功能	操作方法
连接 AUX 3.5mm 音频线或光纤线	长按电源键至状态指示灯白色快闪后松开, 待状态指示灯由快闪变为闪烁后, 使用 3.5mm 音频线 / 光纤线将您的设备连接到 Oslo, 短按 Connect 键, 状态指示灯呈橙色长亮, 连接成功。
播放 / 静音	短按 Vifa® Play
增大音量	短按音量加键 (长按音量加键, 快速调高音量)。
减小音量	短按音量减键 (长按音量减键, 快速调低音量)。

Vifa® PLAY



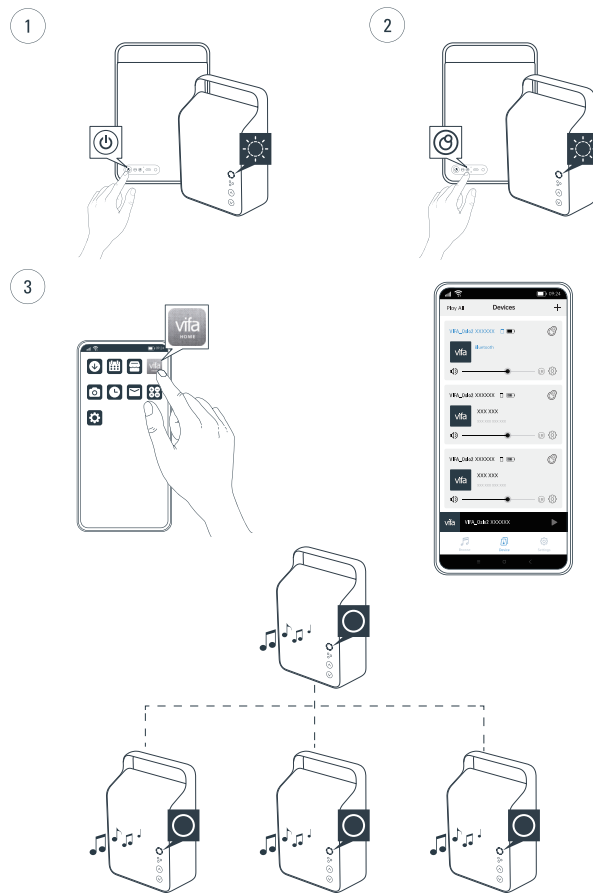
EN:

Function	Operation Method
Vifa® Play	Vifa® Play can allow you to immediately enter your favorite music or radio. Note: Three radios were preset when Oslo was delivered from the factory. If you need to modify the preset radios, please operate on Vifa® HOME APP. The preset radios only support TuneIn countries or regions.
Use Vifa® Play	Press and hold the power button until the status indicator flashes quickly in white. Release the power button, Oslo will enter the network set-up mode, and the status indicator will flash in white. Connect the mobile device to Wi-Fi and open the APP, and connect VIFA_Oslo2 XXXXXX to the same network according to the APP's instructions. When the connection is successful, the status indicator will be always on in white, and the connection success prompt will sound. Press and hold Vifa® Play, the status indicator will be always on in white, which indicates that the connection is successful. When the connection is unsuccessful, the status indicator will flash in red.
Switch radio channels	Press and hold Vifa® Play to switch radio channels.
Play/Pause	Press Vifa® Play
Volume +	Press the Volume+ button (press and hold the Volume+ button to quickly raise the volume)
Volume -	Press the Volume- button (press and hold the Volume- button to quickly lower the volume)

CN:

功能	操作方法
Vifa® Play	Vifa® Play 可以让您立即进入您最喜爱的音乐或电台。 注意: Oslo 出厂时预设三个电台, 如需修改预设电台请在 Vifa® HOME APP 上操作, 预设的广播电台仅限支持 TuneIn 的国家或地区。
使用 Vifa® Play	长按电源键, 直到状态指示灯呈白色快闪, 松开电源键, Oslo 进入配网模式。状态指示灯呈白色闪烁, 将移动设备连接至 Wi-Fi 并打开 APP, 按照 APP 指引将 VIFA_Oslo2 XXXXXX 连接至同一网络下, 成功后状态指示灯呈白色长亮, 连接成功提示音响起。长按 Vifa® Play, 状态指示灯呈白色长亮, Vifa® Play 连接成功, 当连接不成功, 状态指示灯呈红色闪烁。
切换电台	长按 Vifa® Play, 切换电台。
播放 / 暂停	短按 Vifa® Play
增大音量	短按音量加键 (长按音量加键, 快速调高音量)。
减小音量	短按音量减键 (长按音量减键, 快速调低音量)。

Vifa® LINK



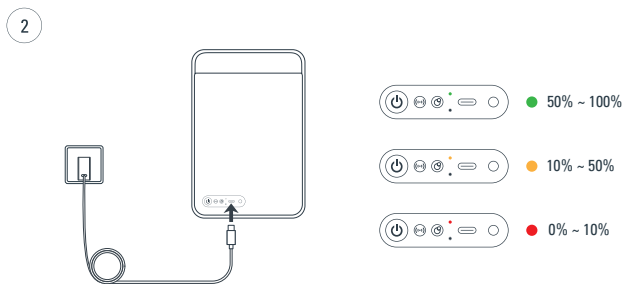
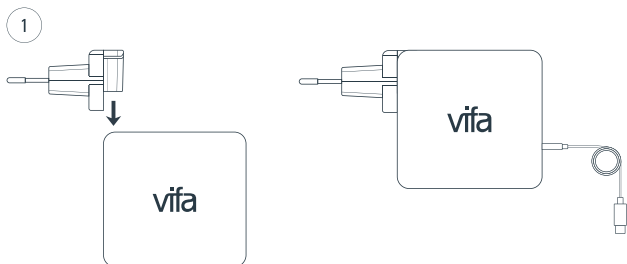
EN:

Function	Operation Method
Vifa® Link	Interconnect different Vifa® HOME stereos through Vifa® Link or APP.
Start Vifa® Link	Press and hold the power button until the status indicator flashes quickly in white. Release the power button, Oslo will enter the network set-up mode, and the status indicator will flash in white. Connect the mobile device to Wi-Fi and open the APP, and connect VIFA_Oslo2 XXXXXX to the same network according to the APP's instructions. When the connection is successful, the status indicator will be always on in white, and the connection success prompt will sound. Press Vifa® Link, and the status indicator will be white and flash slowly, which indicates that Vifa® Link connection is successful.
Disable Vifa® Link	Press and hold Vifa® Link to disable the Vifa® Link grouping function.

CN:

功能	操作方法
Vifa® Link	通过 Vifa® Link 或 APP 使不同 Vifa® HOME 音响互连。
启用 Vifa® Link	长按电源键，直到状态指示灯呈白色快闪，松开电源键，Oslo 进入配网模式。状态指示灯呈白色闪烁，将移动设备连接至 Wi-Fi 并打开 APP，按照 APP 指引将 VIFA_Oslo2 XXXXXX 连接至同一网络下，成功后状态指示灯呈白色长亮，连接成功提示音响起。短按 Vifa® Link，状态指示灯呈白色呼吸，Vifa® Link 连接成功。
解除 Vifa® Link	长按 Vifa® Link，解除 Vifa® Link 组队功能。

Charging



EN:

Use the power cord to charge Oslo. The recommended charging time is 4 to 6 hours, and the playing time is about 14 hours when fully charged (the specific playing time is related to the volume and content).

Note:

Please connect it to the AC (mains) power outlet when you use it for the first time. Press the power button, and the battery level indicator will show the battery level. When Oslo's battery level reaches 100%, the battery level indicator will be always on in green. When Oslo's battery level is less than 10%, the battery level indicator will flash in red.

CN:

使用电源线对Oslo充电。建议充电时间为4-6小时，在满电状态下播放时长约为14小时（具体播放时长与音量和播放内容相关）。

注意：

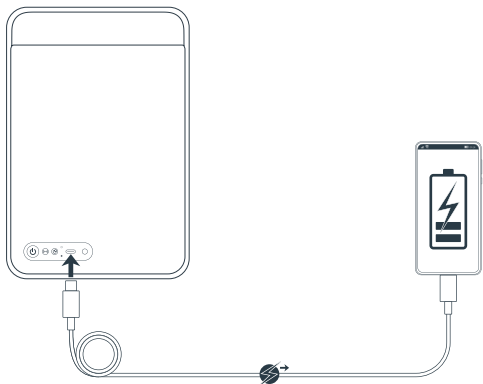
第一次使用时请将其连接到交流（市电）电源插座。

短按电源键，电量指示灯显示电量。

当Oslo充电量达到100%时，电量显示灯绿色长亮。

当Oslo电量小于10%时，电量显示灯红色闪烁。

Power Bank



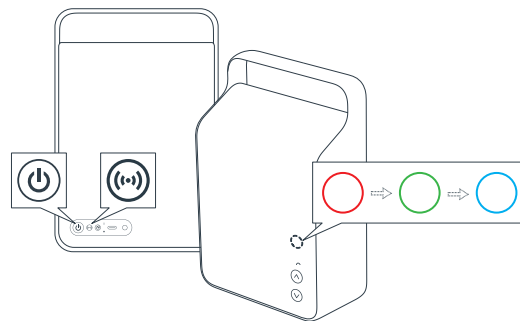
EN:

Oslo can charge your mobile devices. Please use the Charging cable to connect your mobile devices with Oslo, and press and hold the power button to turn on Oslo to charge your mobile devices.

CN:

Oslo可以为您的移动设备进行充电。请使用充电线连接您的移动设备与Oslo，长按电源键开启Oslo，即可为您的移动设备充电。

Factory Settings



EN:

Press the power button and the Connect button at the same time, until the status indicator turns red, green and blue, and then turn off. Release the button, and Oslo will enter the factory default state.

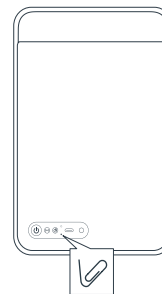
Please note that all user settings will be lost after Oslo is set to the factory default state.

CN:

同时按电源键和Connect键,直到状态指示灯变为红色,绿色,蓝色然后关闭。松开按键,Oslo即进入出厂默认状态。

请注意设置为出厂默认值后,所有的用户设置都会丢失。

Reset



EN:

Available when Oslo crashes.

Use a tool to press the restart button. Oslo will shut down, and the user settings will not be lost.

If the product problems you encounter cannot be found in this user manual, you can contact Support@vifa.dk by email or find more support on the official website www.vifa.dk.

CN:

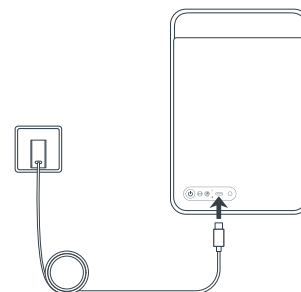
当Oslo处于死机状态时可用。

使用工具，短按重启按键，Oslo关机，用户设置不会丢失。

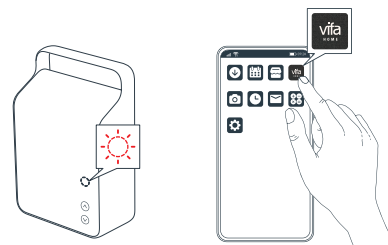
如果您遇到的产品问题未能在此用户手册找到，可以通过邮件方式联系Support@vifa.dk或者在官方网站www.vifa.dk上找到更多支持。

Software Update

1



2



EN:

To ensure that your products get the latest features and updates, you can use Vifa® HOME APP to update the software. Before the software update, please connect your Oslo to the AC (mains) power outlet with the power cord. When the software is being updated, the status indicator will flash in red. After the update is successful, your Oslo will be restarted.

CN:

为确保您的产品获得最新的功能和更新，您可以使用Vifa® HOME APP升级软件，在软件升级前请用电源线将您的Oslo连接到交流（市电）电源插座。软件升级时状态指示灯呈红灯闪烁，升级成功后，您的Oslo将重新启动。

Important Safety Instructions	61
Specifications	64
Trademarks	65
Product Care	66
Limited Warranty by Vifa	67



Please visit: <https://www.vifa.dk/pages/oslo-2-0>
for manuals in other languages

IMPORTANT SAFETY INSTRUCTIONS

This device complies with Part 15 of the FCC Rules. Operation is subject to the following two conditions:

(1) this device may not cause harmful interference, and (2) this device must accept any interference received, including interference that may cause undesired operation.

Note:

This equipment has been tested and found to comply with the limits for a Class B digital device, pursuant to part 15 of the FCC Rules. These limits are designed to provide reasonable protection against harmful interference in a residential installation. This equipment generates uses and can radiate radio frequency energy and, if not installed and used in accordance with the instructions, may cause harmful interference to radio communications. However, there is no guarantee that interference will not occur in a particular installation. If this equipment does cause harmful interference to radio or television reception, which can be determined by turning the equipment off and on, the user is encouraged to try to correct the interference by one or more of the following measures:

—Reorient or relocate the receiving antenna.

—Increase the separation between the equipment and receiver.

—Connect the equipment into an outlet on a circuit different from that to which the receiver is connected.

—Consult the dealer or an experienced radio/TV technician for help.

Any changes or modifications not expressly approved by the party responsible for compliance could void the user's authority to operate the equipment.

FCC/IC Radiation Exposure Statement

This equipment complies with FCC radiation exposure limits set forth for an uncontrolled environment. This equipment should be installed and operated with a minimum distance of 20cm between the radiator and any part of your body. This transmitter must not be co-located or operating in conjunction with any other antenna or transmitter.



Vifa hereby states that Bluetooth and Wi-Fi product Oslo 2.0(VIFA062) conforms to EU Directive 2014/53/EU(RED),(EC) No 1275/2008 and (EU) No 801/2013.

Bluetooth version: 5.0

Bluetooth transmitter frequency range: 2400 MHz- 2483.5 MHz

Bluetooth transmitter power: <12 dBm (EIRP)

Wi-Fi network: IEEE 802.11 a/b/g/n/ac (2.4GHz/5GHz)

2.4G Wi-Fi transmitter frequency range: 2412- 2472 MHz (2.4 GHz ISM Band, USA 11 Channels, Europe and others 13 Channels)

2.4G Wi-Fi transmitter power: <18 dBm (EIRP)

5G Wi-Fi transmitter frequency range: 5.15- 5.35GHz, 5.470- 5.725GHz, 5.725 - 5.825GHz

5G Wi-Fi transmitter power: 5.15- 5.25GHz <23 dBm, 5.25- 5.35GHz & 5.470- 5.725GHz <20 dBm, 5.725- 5.825GHz <14 dBm (EIRP)

The complete statement of compliance with EU standards can be downloaded from www.vifa.dk

The complete statement of compliance with UK standards (UKCA) can be downloaded from www.vifa.dk

The firmware version is equal to or higher than system 00658256

Supervision Safety Information

- 1 Read the instructions for use.
- 2 Keep the instructions for use appropriately.
- 3 Pay attention to all warnings.
- 4 Abide by all instructions for operation.
- 5 Do not use the device near water.
- 6 Clean the device with a dry cloth only.
- 7 Do not block any of the ventilation openings of this device. Install it in accordance with the manufacturer's instructions.
- 8 Do not install device such as electric heater, heat blast controller, stove and other heat-producing device (including power amplifiers) near any heat sources.
- 9 Do not damage polarized or grounding plugs with safety features. The polarized plug has two pins, one wide and one narrow. A grounding plug has two pins and a grounding pin. The wide pin or grounding pin is used to protect your safety. If the provided plug does not match with your outlet, ask an electrician to replace it with a suitable outlet.
- 10 In particular, the power cord shall be protected from being walked on or pinched at the plug socket and device outlet.

11 Only use attachments/accessories specified by the manufacturer.

12 Use the cart, foundation, tripod, bracket or table specified by the manufacturer or sold with the device only. When using a cart, move the cart/device combination with care to avoid tip-over and damage.



13 Unplug this power cord of the device during the thunderstorm period or when the device is not used for a long time.

14 For maintenance and inspection, please consult the relevant qualified service personnel. The device must be overhauled in case of the following conditions: damaged cables or plugs, liquid penetration, foreign objects involvement, being affected by the rain or moisture, operation failure or device falling, etc.

15 The mains plug or appliance coupler is used as disconnect device, the disconnect device shall remain readily operable.

16 Important! The device shall not be placed on soft supports (such as bedding and blanket).

17 Throwing the battery into a fire or stove, or breaking or cutting it with external force may cause an explosion.

18 The maximum ambient temperature shall not exceed 45°C. The minimum temperature is 10°C, the storage temperature is -20°C- 40°C and the transport temperature is 10°C- 45°C. The minimum atmospheric pressure standard is 2000m above sea level, and the atmospheric pressure is 86-106Kpa.

19 Placing the battery in an extremely high temperature environment can cause the battery explosion or leakage of flammable liquids or gases.

Caution!

- 20 Extremely low atmospheric pressure can cause leakage of flammable liquid or gas from the battery.
- 21 The product label shall be attached to the bottom of the product.
- 22 Warning: The battery can cause the explosion if placed inappropriately. If the battery needs to be replaced, a battery of the same type must be used.
- 23 Warning: The battery (external or internal) shall not be exposed to excessive heat such as sunlight, fire or similar heat sources.
- 24 Warning: Keep the power supply available at any time.
- 25 Keep a minimum ventilation distance of 1cm around the product.
- 26 In order to ensure the ventilation of the product, do not place newspapers, tablecloths and curtains, etc. at the ventilation location.
- 27 To protect the environment, do not discard the battery at will.
- 28 This product can be used in tropical conditions.
- 29 There will be a risk of explosion if a battery with inappropriate model is replaced.
- 30 If consumers use a power adapter to supply power to the device, they shall purchase a power adapter that has passed CCC certification and meets the standard requirements.

Do not open this device. There are parts which can be maintained by users inside the device. There is a risk of electric shock inside.

Do not expose this device to dropping water and splashes.

Do not expose the device to open flames. For example, the burning candles cannot be placed on the device.



An exclamation point within a triangle is a warning sign, indicating important instructions that come with the product.



A battery subjected to extremely low air pressure that may result in an explosion or the leakage of flammable liquid or gas. Risk of fire or explosion if the battery is replaced by an incorrect type.

Warning:

To reduce the risk of fire and electric shock, do not expose this device to rain or moisture.

Do not place objects filled with liquids, such as vase, on the device.

SPECIFICATIONS

Description	Vifa® HOME - portable wireless speaker
Model	VIFA062
Technical Features	Bluetooth® Wi-Fi 2.4GHz/5GHz Apple Airplay2 DLNA supported Lithium-ion battery DSP signal processing Dynamic balance bass unit 4-channel digital power amplifier
Loudspeaker	2X50mm Vifa speaker unit with aluminum cone and neodymium magnet
Full Frequency	2X80mm Vifa speaker unit with flat sandwich cone and neodymium magnet
LF	These units are all installed in the speaker box in a back-to-back manner to achieve the balance of front and rear output power, and four passive radiators are provided to enhance the bass effect
Frequency response	55Hz to 20kHz
Bluetooth® version	5.0
SNR	>80dB
Sound pressure level	>98dB@1m
Type of battery	Lithium-ion battery (7.2V/12800mAh)
Connection port	Type-C output, AUX or optical fiber auxiliary input
Input voltage	100V to 240V~50/60Hz
Output voltage	5V≒1A (Type-C)
Standby power	<2W (<0.5W in case of network shutdown)
Input option	Bluetooth® Wi-Fi network Striped optical fiber or analog (3.5mm audio cable)
Output power	AC mode 2*1.5W HF speaker 2*9W MF speaker 2*30W LF speaker
Dimensions	268mm*182mm*90mm (height/width/depth)
Net weight	2.70kg
Frame	Integral die-casting aluminum
Mesh	Customized Kvadrat fabric

TRADEMARKS



Use of the Works with Apple badge means that an accessory has been designed to work specifically with the technology identified in the badge and has been certified by the developer to meet Apple performance standards.

Apple® and AirPlay® logo are trademarks of Apple Inc., registered in the U.S. and other countries.



Amazon, Alexa and all related logos are trademarks of Amazon.com, Inc. or its affiliates.



The Wi-Fi CERTIFIED™ Logo is a registered trademark of Wi-Fi Alliance®.



The Spotify Software is subject to third party licenses found here: <https://www.spotify.com/connect/third-party-licenses>.

Use your phone, tablet or computer as a remote control for Spotify.

Go to [spotify.com/connect](https://www.spotify.com/connect) to learn how.



The Bluetooth® word mark and logos are registered trademarks owned by Bluetooth SIG, Inc. and any use of such marks by Vifa Denmark A/S is under license. Other trademarks and trade names are those of their respective owners.

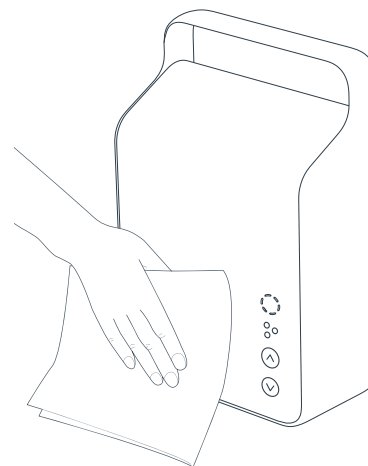


Google Play and Google Play logo are trademarks of Google Inc.

vifa

Vifa® HOME, Vifa® PLAY, Vifa® LINK and the logo are registered trademarks of Vifa Denmark A/S.

PRODUCT CARE



This product is designed to provide advanced musical expression in normal living spaces.

Rain, damp, high humidity or being close to heat sources may damage this product. Recommended for indoor use.

Cleaning

Vifa products are covered with beautiful and durable textile fabrics. Gently wipe with a lintfree cloth to remove non-oil stains or use a sticky stick to remove fine fabric lint.



Do not use a vacuum cleaner, which may damage the speaker device behind the fabric.

LIMITED WARRANTY OF VIFA

This limited warranty applies only to products manufactured by Vifa (each "Product").

Warranty Scope

This limited warranty covers the functions of the product using only in the normal environment specified in the instructions for use and does not cover malfunctions resulting from improper or unreasonable use or maintenance, such as accidents, water ingress, improper packaging, lightning strike, surge or unauthorized tampering, and changes or modifications not authorized by Vifa. This limited warranty is limited to repair or replacement of the product at Vifa's discretion, and the product transportation, relocation and installation expenses are not covered by this limited warranty.

Warranty Period

The warranty period is 12 months/1 year, unless otherwise stated in the documents expressly included in the purchase, or otherwise specified by local laws and regulations. The warranty period shall take effect immediately after the product is delivered to the customer. If the product is repaired/altered by a company or person not authorized by Vifa, or if the serial number of the product is removed from the product for any reason, the warranty period shall cease immediately.

Vifa Provides You with Sincere Services

If Vifa receives a valid notice of any product defect covered by the warranty during the applicable warranty period, Vifa will take one of following actions according to the actual conditions within a reasonable time limit after receiving the notice of defect:

- 1 Repairing the faults free of charge with new or refurbished replacement parts.
- 2 Replacing with a similar product.
- 3 Returning the amount for purchasing the product.

The response time may vary with the country, including shipping of available parts. All defective parts replaced will become the property of Vifa. Vifa has no obligation for repair, replacement or refund before the customer returns the faulted product to an authorized distributor. Any replaced product may be new or nearly new and shall provide at least the same functionality as the replaced product. Repairs or damage beyond the limited warranty period is not covered by this warranty unless prior approval has been obtained.

How to Obtain Service

In the event of a product defect, you shall take the following measures:

- 1 Please refer to the instructions for use to identify and correct the problem of this device.
- 2 If the problem cannot be solved by referring to the instructions for use, please contact the merchant/shop that you originally purchased the product to inquire about the problem you want to solve.
- 3 Vifa will arrange for repair or replacement of the product if necessary. Please present the date and address of your original invoice for the purchase of the product. The terms of repair or replacement are subject to the extension terms clearly determined between you and the merchant/shop at the time of delivery and the local relevant legal provisions of the electronic product, and are not covered by this limited warranty.

If you intend to transport the product, neither Vifa nor the distributor shall be responsible for any damage to the product during the transportation. Therefore, we always recommend that you should pack your product in the original shipping carton.

Other Rights

This limited warranty does not affect your statutory rights. This limited warranty gives you specific rights under specific conditions. You may also have other mandatory legal rights depending on the country in which the product was originally purchased. This limited warranty does not affect similar legal rights and does not prevent you from seeking any legal remedies according to the law.

Warranty Restrictions and Responsibilities

Except for personal or property damage caused by Vifa's gross negligence, Vifa's maximum compensation shall not exceed the price originally paid by you to purchase the product. In the event of personal injury and/or property damage caused by Vifa's gross negligence, Vifa is only responsible for the direct losses.

Vifa shall have the final power of interpretation.

重要安全声明

本设备符合FCC规则第15部分的要求。

其操作取决于以下两个条件:

- 1 本设备不会产生有害干扰。
- 2 本设备必须接受任何可能的干扰,包括可能导致非正常操作的干扰。

注意:

本设备已根据FCC规则第15部分经过测试,符合B类数字设备的限制。这些限制旨在提供合理的保护,防止家用设备的有害干扰。本设备会产生、使用并可能辐射无线电频率能量,如果不按照指示安装和使用,可能造成对无线电通讯的有害干扰。然而,在特定的安装条件下,也不能保证不会发生干扰,如果本设备确实对无线电或电视接收造成有害干扰,可以通过打开和关闭设备确定。我们鼓励用户尝试以下措施中的一项或多项进行纠正干扰。

措施:

- 一重新定位或重新定位天线。
- 一增加设备和接收器之间的间隔距离。
- 一将设备连接到不同于接收器所连接的电源插座上。
- 一咨询Vifa或经销商或有经验的无线电/电视技术人员,以求助。

警告!

任何未经合规责任方明确批准的更改或修改都可能使用户操作设备的权限失效。

FCC/IC 辐射暴露声明

本设备符合针对不受控制环境规定的FCC辐射暴露限制。安装和操作本设备时,散热器与您身体的任何部位之间的最小距离应为20cm。此发射器不得与任何其他天线或发射器位于同一位置或一起运行。

Vifa Denmark A/S特声明,蓝牙和Wi-Fi无线产品Oslo 2.0(VIFA062)符合欧盟2014/53/EU (RED)、(EC) No 1275/2008 和 (EU) No 801/2013指令。完整的欧盟合格声明可从以下网站下载: www.vifa.dk

完整的符合英国标准 (UKCA) 的声明可从以下网站下载: www.vifa.dk

固件版本等于或高于00658256

监管安全信息

- 1 阅读本说明书。
- 2 妥善保管本说明书。
- 3 注意所有警告。
- 4 遵照所有说明操作。
- 5 请勿在靠近水处使用本设备。
- 6 仅用于布清洁本设备。
- 7 请勿阻挡本设备任何通风口,按照制造商的说明进行安装。
- 8 请勿安装在任何热源附近,如电暖器、热风调节器、暖炉及其他产热的设备(包括功放机)。
- 9 请勿破坏具有安全功效的极性插头或者接地式插头。极性插头有两个插片,一宽一窄。接地式插头有两个插头和一个接地针。其中,宽插片或接地针用来保障您的安全。如果所提供的插头与您的插座不匹配,请要求电工更换适合的插座。
- 10 尤其要保护插头插座和设备出口处的电源线免受踩踏或挤压。
- 11 只能使用制造商指定的附件/配件。
- 12 只能使用制造商指定或随设备销售的推车、底座、三脚台、支架或桌子。使用推车时,移动推车/设备组合要小心,以免翻倒受伤。

重要安全声明	97
规格	99
商标	100
产品保养	101
Vifa 有限保修	102



如需其他语言的手册,请访问:
<https://www.vifa.dk/pages/oslo-2-0>



- 13 长时间不使用或雷雨期间,请拔下本设备的电源。
- 14 如需维护检修,请咨询相关有资质的维修人员。如有以下情况出现,必须对设备进行检修:电缆或插头损坏、液体渗入、异物掉入、淋雨受潮、无法正常运行或设备跌落等。
- 15 电源插头和器具耦合作为断开装置,断开装置应当保持能方便地操作。
- 16 重要!本设备不能放在柔软的支持物上(比如床上用品,毯子等)。
- 17 把电池扔到火或火炉,或者用外力弄碎或切割可能导致爆炸。
- 18 环境温度最大不应该超过45°C,最低10°C,存储温度-20°C-40°C,运输温度10°C-45°C,最低气压标准是在海拔2000m,气压为86-106Kpa。
把电池放置在极高温度的环境下会引起电池爆炸或者易燃液体或气体的泄漏。
- 20 极端低气压会引起电池的易燃液体或气体的泄漏。
- 21 产品标签贴在产品底部。
- 22 警告:如果电池放置不当会引起爆炸。如需替换,必须使用相同型号的电池。
- 23 警告:电池(外置或内置)不应该暴露在过热的环境下比如阳光、火或类似的热源。
- 24 警告:保持电源随时可用。
- 25 保持产品周围最少有1cm的通风距离。
- 26 为保障产品通风,请不要在通风处放置报纸、桌布、窗帘等。
- 27 为了保护环境,请不要随意丢弃电池。
- 28 本产品用于在热带或温和的气温下。
- 29 如果使用不当的型号替换电池会有爆炸的危险。

- 30 消费者若使用电源适配器给本设备进行供电,则应购买获得CCC认证并满足标准要求电源适配器。

警告:

为降低火灾和触电的风险,请勿让本设备淋雨或受潮。
请勿在设备上放置装满液体的物体,如花瓶。
请勿打开设备。设备内没有用户可维修的部件。内部有触电的危险。
请勿让设备暴露在滴水 and 飞溅的场所。
请勿让产品暴露在明火下,比如燃烧蜡烛不能放置在产品上。



三角形内的感叹号是警示标志,表示产品随附的重要说明。



仅适用于海拔2000m以下使用。



极端低气压会引起电池的易燃液体或气体的泄漏。如果用不当的型号替换电池会有爆炸的危险。

规格

描述	Vifa® HOME-便携式无线音箱
型号	VIFA062
技术特点	Bluetooth® Wi-Fi 2.4GHz/5GHz Apple Airplay2 支持DLNA 锂离子电池 DSP信号处理 力平衡低音单元 4通道数字功放
扬声器	2x50mm带铝盆和钹磁铁的Vifa扬声器单元 2X80 mm带扁平三文治盆和钹磁铁的vifa扬声器单元, 这些单元都是以背靠背方式安装在音箱内从而达到前后输出力度的平衡, 同时配置两个无源辐射器增强低音效果。
全频	55Hz-20kHz
低音	5.0 > 80dB > 98dB@1m 锂离子电池 (7.2V/12800mAh) Type-C输出、AUX或光纤辅助输入 100-240V~50/60Hz 5V⎓1A (Type-C) < 2W(关闭网络 < 0.5W) Bluetooth® Wi-Fi网络 带光纤或模拟 (3.5mm音频线) 交流电模式 2*1.5W高音扬声器 2*9W中音扬声器 2*30W低音扬声器 268mm*182mm*90mm 2.70kg 整体压铸铝 定制Kvadrat布料
频率响应	
Bluetooth®版本	
信噪比	
声压级	
电池类型	
连接端口	
输入电压	
输出电压	
待机耗电量	
输入选项	
输出功率	
尺寸 (高/宽/深)	
净重	
框架	
网罩	

商标



使用“Works with Apple”徽章意味着配件专为与徽章中标识的技术配合使用，并经开发人员认证符合Apple性能标准。Apple®和AirPlay®徽标是苹果公司在美国和其他国家注册的商标。



Amazon, Alexa和所有相关徽标是Amazon公司或其附属公司的商标。



Wi-Fi CERTIFIED™徽标是Wi-Fi Alliance®的注册商标。



Spotify软件从属于以下第三方许可：www.spotify.com/connect/third-party-licenses

将您的手机、平板或电脑用作Spotify遥控器。前往spotify.com/connect了解如何使用。



Bluetooth®徽标、Bluetooth名称和组合是Bluetooth SIG公司拥有的商标。Vifa Denmark A/S的任何使用都是在此许可之下。其他商标和商品名称是其各自所有者的名称。

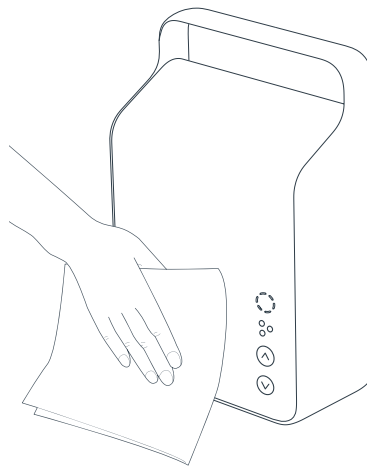


Google Play和Google Play徽标是Google Inc.的商标。

vifa

Vifa®HOME, Vifa®PLAY, Vifa®LINK和徽标是Vifa Denmark A/S的注册商标。

产品保养



本产品是为在正常居住空间内提供高级音乐表现力而设计。

淋雨、受潮、湿度高或靠近热源都可能会损坏本产品。

建议室内使用。

清洁

Vifa产品覆有美观、高耐用的纺织布，用一块无绒布轻擦以除去非油污渍或用粘毛根除去织物细绒。



切勿使用真空吸尘器，这会导致织物后面的扬声器装置受损。

Vifa 有限保修

此有限保修仅适用于由Vifa生产的产品（每个“产品”）。

保修范围

本有限保修涵盖仅使用说明书中规定的正常环境的产品功能，不包括因不当或不合理使用或维修产生的故障，如事故、进水、包装不当、雷击、电涌或未经授权的篡改，未经Vifa授权的更改或修改。本有限保修限于由Vifa决定维修或更换产品，产品的运输、搬迁、安装费不在此有限保修覆盖范围内。

保修时间

除在购买中明确的文件另有说明，或当地法律法规另有规定外，质保期为12个月/1年。保修期在产品交付给客户后立即生效。如果产品被非Vifa授权的公司或个人修理/改动，或无论出于何种原因产品的序列号被从产品中删除，保修期立即停止。

Vifa 为您提供

在适用的保修期内，如果Vifa收到保修范围内任何产品不良的有效通知，Vifa将在收到不良情况通知后的合理时间内，根据实际情况采取以下任一措施之一：

- 1 免费修复故障，使用新的或翻新的替换零件。
- 2 更换同款产品。
- 3 退还购买产品的金额。

回复时间可能因国家而异，其中包括可用的零件的运输情况。更换的所有故障的零部件将成为Vifa的资产。在客户返回故障产品给授权经销商前，Vifa并没有义务修理、更换或退款。任何更换的产品可能是新的或几乎是新的，至少提供与被更换产品同等的功能。有限保修期外的维修或损坏并不在此保修内，除非先获得批准外。

如何获得服务

如出现产品缺陷，您应该采取以下措施：

- 1 请参阅说明书，以识别和纠正本设备的问题。
- 2 如果参照使用说明书问题仍不能得到解决，请联系最初购买产品的商家/地方咨询您想要解决的问题。
- 3 如果有必要，Vifa将安排维修或更换产品，请出示您购买产品的原始发票的日期和地址。维修或更换的条款，受您与商家/地方交付时的明确扩展条款和当地电子产品的相关法律条款而定，并不在此本有限保修内。

如果您要运输产品，不管Vifa还是经销商都对运输过程中产品产生的损坏不负有责任。因此，我们总是建议您使用原装运纸箱包装产品。

其他权利

本有限保修不影响您的法定权利。此有限保修提供您在特定条件下的特定权利。您可能还拥有其他强制性法律权利，这取决于最初购买该产品在哪个国家。本有限保修不影响类似的法律权利，且不阻碍您在法律下寻求任何法律补偿。

保修限制和责任

除因Vifa存在重大过失造成人身或财产损失外，Vifa的最高赔偿不得超过最初由您支付购买产品的价格。因Vifa重大过失引起人身伤害和/或财产损害的，Vifa仅就其直接损失承担赔偿责任。

最终解释权归Vifa所有



微信公众号

保修卡

客服电话：400-668-8408

机身编号：

商品名称：_____ 产品型号：_____

销售日期：____年__月__日 发票号码：_____

用户姓名：_____ 联系电话：_____

地址（邮编）：_____

产品中有害物质的名称及含量

部件名称 Part Name	有毒有害物质或元素					
	铅 (Pb)	汞 (Hg)	镉 (Cd)	六价铬 (Cr6+)	多溴联苯 (PBBS)	多溴二苯醚 (PBDES)
电路板部分 (PCBA)	×	○	○	○	○	○
塑料部分 (Plastic Part)	○	○	○	○	○	○
金属部分 (Metal Part)	×	○	○	○	○	○
线材 (Cable)	×	○	○	○	○	○
扬声器 (Speaker)	○	○	○	○	○	○
包装材料 (Packing)	○	○	○	○	○	○

本表格根据SJ/T 11364的规定编制

×：表示该有害物质在该部件所有均质中的含量均在GB/T 26572的限制要求以下。

○：表示该有害物质至少在该部件的某一均质中的含量超出GB/T 26572的限制要求以下。

For more information please visit our website at
www.vifa.dk