



# TEST REPORT

**Report Reference No.**..... : **TRE1410009404** R/C.....:53771  
**FCC ID**..... : **2AAP6M7054**  
**Applicant's name**..... : **SHENZHEN ZOWEE TECHNOLOGY CO.,LTD**  
 Address..... : Science &Technology Industrial Park of Privately Owned Enterprises,  
 Pingshan, Xili, Nanshan District, Shenzhen, PR CHINA  
 Manufacturer..... : SHENZHEN ZOWEE TECHNOLOGY CO.,LTD  
 Address..... : Science &Technology Industrial Park of Privately Owned Enterprises,  
 Pingshan, Xili, Nanshan District, Shenzhen, PR CHINA  
**Test item description** ..... : **Internet Tablet**  
 Trade Mark ..... : TMAX,APEX,DOPO,NOBIS,DAGE,NOVISION  
 Model/Type reference..... : M7054  
 Listed Model(s) ..... : DPM7828,DPM7827,DPM7826,TM7005,TM7006,TM7008,NB7856,  
 NB7866  
**Standard** ..... : **ANSI C95.1-1999/47CFR § 2.1093**  
 Date of receipt of test sample.....: Oct 24, 2014  
 Date of testing.....: Oct 25, 2014  
 Date of issue.....: Nov 04, 2014  
**Result**.....: **PASS**

Compiled by  
 ( position+printed name+signature)...: File administrators Any Yang

*Any Yang*

Supervised by  
 ( position+printed name+signature)...: Project Engineer Jerome Luo

*Jerome Luo*

Approved by  
 ( position+printed name+signature)...: RF Manager Hans Hu

*Hans Hu*

**Testing Laboratory Name** ..... : **Shenzhen Huatongwei International Inspection Co., Ltd**  
 Address..... : Keji Nan No.12 Road, Hi-tech Park, Shenzhen, China

**Shenzhen Huatongwei International Inspection Co., Ltd. All rights reserved.**

This publication may be reproduced in whole or in part for non-commercial purposes as long as the Shenzhen Huatongwei International Inspection Co., Ltd is acknowledged as copyright owner and source of the material. Shenzhen Huatongwei International Inspection Co., Ltd takes no responsibility for and will not assume liability for damages resulting from the reader's interpretation of the reproduced material due to its placement and context.

## Contents

|           |   |           |
|-----------|---|-----------|
| <b>1.</b> | <b><u>TEST STANDARDS</u></b>                            | <b>3</b>  |
| <b>2.</b> | <b><u>SUMMARY</u></b>                                   | <b>4</b>  |
| 2.1.      | Client Information                                      | 4         |
| 2.2.      | Product Description                                     | 4         |
| 2.3.      | Statement of Compliance                                 | 4         |
| 2.4.      | Equipment under Test                                    | 5         |
| 2.5.      | Short description of the Equipment under Test (EUT)     | 5         |
| 2.6.      | EUT configuration                                       | 5         |
| <b>3.</b> | <b><u>TEST ENVIRONMENT</u></b>                          | <b>6</b>  |
| 3.1.      | Address of the test laboratory                          | 6         |
| 3.2.      | Test Facility   | 6         |
| 3.3.      | Environmental conditions                                | 7         |
| 3.4.      | SAR Limits  | 7         |
| 3.5.      | Equipments Used during the Test                         | 7         |
| <b>4.</b> | <b><u>SAR MEASUREMENTS SYSTEM CONFIGURATION</u></b>     | <b>8</b>  |
| 4.1.      | SAR Measurement Set-up                                  | 8         |
| 4.2.      | DASY5 E-field Probe System                              | 9         |
| 4.3.      | Phantoms  | 10        |
| 4.4.      | Device Holder   | 10        |
| 4.5.      | Scanning Procedure                                      | 11        |
| 4.6.      | Data Storage and Evaluation                             | 11        |
| 4.7.      | Tissue Dielectric Parameters for Head and Body Phantoms | 13        |
| 4.8.      | Tissue equivalent liquid properties                     | 14        |
| 4.9.      | System Check  | 14        |
| 4.10.     | SAR measurement procedure                               | 15        |
| <b>5.</b> | <b><u>TEST CONDITIONS AND RESULTS</u></b>               | <b>19</b> |
| 5.1.      | Conducted Power Results                                 | 19        |
| 5.2.      | Simultaneous TX SAR Considerations                      | 20        |
| 5.3.      | SAR Measurement Results                                 | 22        |
| 5.4.      | SAR Measurement Variability                             | 23        |
| 5.5.      | Measurement Uncertainty (300MHz-3GHz)                   | 24        |
| 5.6.      | System Check Results                                    | 26        |
| 5.7.      | SAR Test Graph Results                                  | 27        |
| <b>6.</b> | <b><u>CALIBRATION CERTIFICATE</u></b>                   | <b>28</b> |
| 6.1.      | Probe Calibration Certificate                           | 28        |
| 6.2.      | D2450V2 Dipole Calibration Certificate                  | 39        |
| 6.3.      | DAE4 Calibration Certificate                            | 47        |
| <b>7.</b> | <b><u>TEST SETUP PHOTOS</u></b>                         | <b>50</b> |
| <b>8.</b> | <b><u>EXTERNAL PHOTOS OF THE EUT</u></b>                | <b>51</b> |

## 1. TEST STANDARDS

The tests were performed according to following standards:

[IEEE Std C95.1, 1999](#): IEEE Standard for Safety Levels with Respect to Human Exposure to Radio Frequency Electromagnetic Fields, 3 KHz to 300 GHz. It specifies the maximum exposure limit of 1.6 W/kg as averaged over any 1 gram of tissue for portable devices being used within 20 cm of the user in the uncontrolled environment.

[IEEE Std 1528™-2003](#): IEEE Recommended Practice for Determining the Peak Spatial-Average Specific Absorption Rate (SAR) in the Human Head from Wireless Communications Devices: Measurement Techniques.

[KDB 447498 D01 Mobile Portable RF Exposure v05r02](#): Mobile and Portable Device RF Exposure Procedures and Equipment Authorization Policies

[KDB 616217 D04 SAR for laptop and tablets v01](#): SAR Evaluation Considerations for Laptop, Notebook, Netbook and Tablet Computers

[KDB865664 D01 SAR measurement 100 MHz to 6 GHz v01r03](#): SAR Measurement Requirements for 100 MHz to 6 GHz

[KDB865664 D02 SAR Reporting v01](#): RF Exposure Compliance Reporting and Documentation Considerations

[KDB248227](#): SAR measurement procedures for 802.112abg transmitters

[FCC Part 2.1093 Radiofrequency Radiation Exposure Evaluation](#): Portable Devices

## 2. SUMMARY

### 2.1. Client Information

|               |  |
|---------------|--|
| Applicant:    | SHENZHEN ZOWEE TECHNOLOGY CO.,LTD  |
| Address:      | Science &Technology Industrial Park of Privately Owned Enterprises, Pingshan, Xili, Nanshan District, Shenzhen, PR CHINA |
| Manufacturer: | SHENZHEN ZOWEE TECHNOLOGY CO.,LTD  |
| Address:      | Science &Technology Industrial Park of Privately Owned Enterprises, Pingshan, Xili, Nanshan District, Shenzhen, PR CHINA |

### 2.2. Product Description

|                      |   |
|----------------------|---|
| Name of EUT          | Internet Tablet   |
| Trade Mark:          | TMAX,APEX,DOPO,NOBIS,DAGE,NOVISION  |
| Model No.:           | M7054   |
| Listed Model(s):     | DPM7828,DPM7827,DPM7826, TM7005, TM7006, TM7008, NB7856, NB7866                         |
| Power supply:        | DC 3.7V From Internal Battery   |
| Adapter information: | Model No.:JK050150-S02USU<br>Input: AC 100-240V~, 50/60Hz, 0.3A<br>Output: DC 5.0V 1.5A |
| <b>WIFI</b>          |   |
| Supported type:      | 802.11b/802.11g/802.11n(H20)/802.11n(H40)   |
| Modulation:          | 802.11b: DSSS<br>802.11g/802.11n(H20)/802.11n(H40):OFDM                                 |
| Operation frequency: | 802.11b/802.11g/802.11n(H20): 2412MHz~2462MHz<br>802.11n(H40): 2422MHz~2452MHz          |
| Channel number:      | 802.11b/802.11g/802.11n(H20): 11<br>802.11n(H40): 7                                     |
| Channel separation:  | 5MHz  |
| Antenna type:        | Internal Antenna  |
| Antenna gain:        | 2.0 dBi   |
| <b>BT4.0+BLE</b>     |   |
| Supported type:      | Supported BT4.0+EDR   |
| Modulation:          | GFSK  |
| Operation frequency: | 2402MHz~2480MHz   |
| Channel number:      | 40  |
| Channel separation:  | 2MHz  |
| Antenna type:        | Internal Antenna  |
| Antenna gain:        | 2.0dBi  |

### 2.3. Statement of Compliance

The maximum of results of SAR found during testing for M7054 are follows:

| Exposure Configuration            | Technolohy Band | Highest Reported SAR<br>1g(W/Kg) | Equipment Class |
|-----------------------------------|-----------------|----------------------------------|-----------------|
| Body<br>(Separation Distance 0mm) | WLAN2450        | <b>0.744</b>                     | DTS             |

The SAR values found for theTable PC are below the maximum recommended levels of 1.6W/Kg as averaged over any 1g tissue accordintg to the ANSI C95.1-1999.

The EUT battery must be fully charged and checked periodically during the test to ascertain iniform power output.

The highest reported SAR values is obtained at the case of, and the values are: **0.744 W/Kg(1g)**.

## 2.4. Equipment under Test

### Power supply system utilised

|                      |   |   |                                   |
|----------------------|---|---|-----------------------------------|
| Power supply voltage | : | <input type="radio"/> 120V / 60 Hz                                | <input type="radio"/> 115V / 60Hz |
|                      |   | <input type="radio"/> 12 V DC                                     | <input type="radio"/> 24 V DC     |
|                      |   | <input checked="" type="radio"/> Other (specified in blank below) |                                   |

DC 3.70 V/DC 5.0V Adapter from AC 120V/60Hz

## 2.5. Short description of the Equipment under Test (EUT)

Internet Tablet (Model: M7054).

The EUT battery must be fully charged and checked periodically during the test to ascertain maximum power output.

## 2.6. EUT configuration

The following peripheral devices and interface cables were connected during the measurement:

- supplied by the manufacturer

- supplied by the lab

|                                   |                |   |
|-----------------------------------|----------------|---|
| <input type="radio"/> Power Cable | Length (m) :   | / |
|                                   | Shield :       | / |
|                                   | Detachable :   | / |
| <input type="radio"/> Multimeter  | Manufacturer : | / |
|                                   | Model No. :    | / |

### **3. TEST ENVIRONMENT**

#### **3.1. Address of the test laboratory**

Test Laboratory: Shenzhen Huatongwei International Inspection Co., Ltd  
Address: Keji Nan No.12 Road, Hi-tech Park, Shenzhen, China  
Phone: 86-755-26715686 Fax: 86-755-26748089

#### **3.2. Test Facility**

The test facility is recognized, certified, or accredited by the following organizations:

##### **CNAS-Lab Code: L1225**

Shenzhen Huatongwei International Inspection Co., Ltd. has been assessed and proved to be in compliance with CNAS-CL01 Accreditation Criteria for Testing and Calibration Laboratories (identical to ISO/IEC 17025: 2005 General Requirements) for the Competence of Testing and Calibration Laboratories, Date of Registration: Mar. 29, 2012. Valid time is until Feb. 28, 2015.

##### **A2LA-Lab Cert. No. 2243.01**

Shenzhen Huatongwei International Inspection Co., Ltd. EMC Laboratory has been accredited by A2LA for technical competence in the field of electrical testing, and proved to be in compliance with ISO/IEC 17025: 2005 General Requirements for the Competence of Testing and Calibration Laboratories and any additional program requirements in the identified field of testing. Valid time is until Sept. 30, 2013.

##### **FCC-Registration No.: 662850**

Shenzhen Huatongwei International Inspection Co., Ltd. EMC Laboratory has been registered and fully described in a report filed with the FCC (Federal Communications Commission). The acceptance letter from the FCC is maintained in our files. Registration 662850, Renewal date June. 01, 2012, valid time is until June. 01, 2015.

##### **IC-Registration No.: 5377A**

The 3m Alternate Test Site of Shenzhen Huatongwei International Inspection Co., Ltd. has been registered by Certification and Engineering Bureau of Industry Canada for the performance of radiated measurements with Registration No. 5377A on Jan. 25, 2011, valid time is until Jan. 24, 2014.

##### **ACA**

Shenzhen Huatongwei International Inspection Co., Ltd. EMC Laboratory can also perform testing for the Australian C-Tick mark as a result of our A2LA accreditation.

##### **VCCI**

The 3m Semi-anechoic chamber (12.2m×7.95m×6.7m) and Shielded Room (8m×4m×3m) of Shenzhen Huatongwei International Inspection Co., Ltd. has been registered in accordance with the Regulations for Voluntary Control Measures with Registration No.: G-292. Date of Registration: Dec. 24, 2010. Valid time is until Dec. 23, 2013.

Main Ports Conducted Interference Measurement of Shenzhen Huatongwei International Inspection Co., Ltd. has been registered in accordance with the Regulations for Voluntary Control Measures with Registration No.: C-2726. Date of Registration: Dec. 20, 2012. Valid time is until Dec. 19, 2015.

Telecommunication Ports Conducted Interference Measurement of Shenzhen Huatongwei International Inspection Co., Ltd. has been registered in accordance with the Regulations for Voluntary Control Measures with Registration No.: T-1837. Date of Registration: May 07, 2013. Valid time is until May 06, 2016.

##### **DNV**

Shenzhen Huatongwei International Inspection Co., Ltd. has been found to comply with the requirements of DNV towards subcontractor of EMC and safety testing services in conjunction with the EMC and Low voltage Directives and in the voluntary field. The acceptance is based on a formal quality Audit and follow-ups according to relevant parts of ISO/IEC Guide 17025 (2005), in accordance with the requirements of the DNV Laboratory Quality Manual towards subcontractors. Valid time is until Aug. 24, 2016.

### 3.3. Environmental conditions

During the measurement the environmental conditions were within the listed ranges:

|                       |              |
|-----------------------|--------------|
| Temperature:          | 18-25 ° C    |
| Humidity:             | 40-65 %      |
| Atmospheric pressure: | 950-1050mbar |

### 3.4. SAR Limits

FCC Limit (1g Tissue)

| EXPOSURE LIMITS  | SAR (W/kg)   |  |
|--|--|--|
|  | (General Population /<br>Uncontrolled Exposure<br>Environment) | (Occupational /<br>Controlled Exposure<br>Environment) |
| Spatial Average<br>(averaged over the whole body)                | 0.08   | 0.4  |
| Spatial Peak<br>(averaged over any 1 g of<br>tissue)             | 1.60   | 8.0  |
| Spatial Peak<br>(hands/wrists/feet/ankles<br>averaged over 10 g) | 4.0  | 20.0   |

Population/Uncontrolled Environments are defined as locations where there is the exposure of individual who have no knowledge or control of their exposure.

Occupational/Controlled Environments are defined as locations where there is exposure that may be incurred by people who are aware of the potential for exposure (i.e. as a result of employment or occupation).

### 3.5. Equipments Used during the Test

| Test Equipment                       | Manufacturer    | Type/Model | Serial Number | Calibration      |                      |
|--------------------------------------|-----------------|------------|---------------|------------------|----------------------|
|                                      |                 |            |               | Last Calibration | Calibration Interval |
| Data Acquisition Electronics DAEx    | SPEAG           | DAE4       | 1315          | 2013/11/25       | 1                    |
| E-field Probe                        | SPEAG           | EX3DV4     | 3842          | 2014/06/06       | 1                    |
| System Validation Dipole 2450V2      | SPEAG           | D2450V2    | 884           | 2013/12/11       | 1                    |
| Dielectric Probe Kit                 | Agilent         | 85070E     | US44020288    | /                | /                    |
| Power meter                          | Agilent         | E4417A     | GB41292254    | 2013/12/26       | 1                    |
| Power sensor                         | Agilent         | 8481H      | MY41095360    | 2013/12/26       | 1                    |
| Network analyzer                     | Agilent         | 8753E      | US37390562    | 2013/12/25       | 1                    |
| Universal Radio Communication Tester | ROHDE & SCHWARZ | CMU200     | 112012        | 2013/10/23       | 1                    |

## 4. SAR Measurements System configuration

### 4.1. SAR Measurement Set-up

The DASY5 system for performing compliance tests consists of the following items:

A standard high precision 6-axis robot (Stäubli RX family) with controller and software. An arm extension for accommodating the data acquisition electronics (DAE).

A dosimetric probe, i.e. an isotropic E-field probe optimized and calibrated for usage in tissue simulating liquid. The probe is equipped with an optical surface detector system.

A data acquisition electronic (DAE) which performs the signal amplification, signal multiplexing, AD-conversion, offset measurements, mechanical surface detection, collision detection, etc. The unit is battery powered with standard or rechargeable batteries. The signal is optically transmitted to the EOC.

A unit to operate the optical surface detector which is connected to the EOC.

The Electro-Optical Coupler (EOC) performs the conversion from the optical into a digital electric signal of the DAE. The EOC is connected to the DASY5 measurement server.

The DASY5 measurement server, which performs all real-time data evaluation for field measurements and surface detection, controls robot movements and handles safety operation. A computer operating Windows 2003.

DASY5 software and SEMCAD data evaluation software.

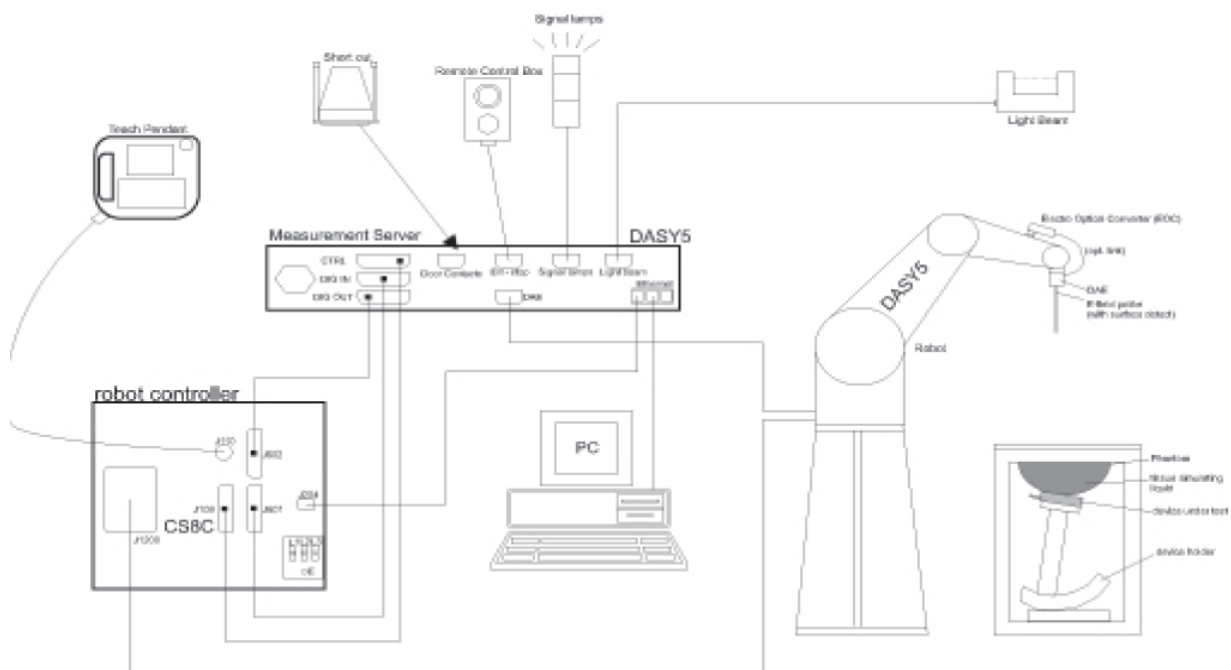
Remote control with teach panel and additional circuitry for robot safety such as warning lamps, etc.

The generic twin phantom enabling the testing of left-hand and right-hand usage.

The device holder for handheld mobile phones.

Tissue simulating liquid mixed according to the given recipes.

System validation dipoles allowing to validate the proper functioning of the system.





## 4.2. DASY5 E-field Probe System

The SAR measurements were conducted with the dosimetric probe ES3DV3 (manufactured by SPEAG), designed in the classical triangular configuration and optimized for dosimetric evaluation.

### Probe Specification

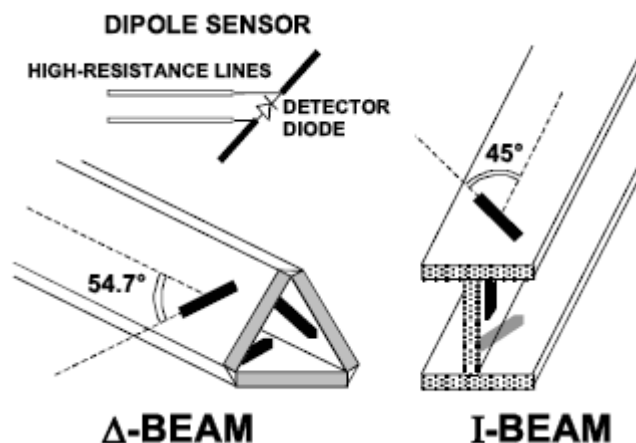
|               |  |
|---------------|--|
| Construction  | Symmetrical design with triangular core<br>Interleaved sensors<br>Built-in shielding against static charges<br>PEEK enclosure material (resistant to organic solvents, e.g., DGBE) |
| Calibration   | ISO/IEC 17025 calibration service available.   |
| Frequency     | 10 MHz to 4 GHz;<br>Linearity: $\pm 0.2$ dB (30 MHz to 4 GHz)  |
| Directivity   | $\pm 0.2$ dB in HSL (rotation around probe axis)<br>$\pm 0.3$ dB in tissue material (rotation normal to probe axis)  |
| Dynamic Range | 5 $\mu$ W/g to > 100 mW/g;<br>Linearity: $\pm 0.2$ dB  |
| Dimensions    | Overall length: 337 mm (Tip: 20 mm)<br>Tip diameter: 3.9 mm (Body: 12 mm)<br>Distance from probe tip to dipole centers: 2.0 mm   |
| Application   | General dosimetry up to 4 GHz<br>Dosimetry in strong gradient fields<br>Compliance tests of mobile phones  |
| Compatibility | DASY3, DASY4, DASY52 SAR and higher, EASY4/MRI   |



### Isotropic E-Field Probe

The isotropic E-Field probe has been fully calibrated and assessed for isotropicity, and boundary effect within a controlled environment. Depending on the frequency for which the probe is calibrated the method utilized for calibration will change.

The E-Field probe utilizes a triangular sensor arrangement as detailed in the diagram below:



### 4.3. Phantoms

The phantom used for all tests i.e. for both system checks and device testing, was the twin-headed "SAM Phantom", manufactured by SPEAG. The SAM twin phantom is a fiberglass shell phantom with 2mm shell thickness (except the ear region, where shell thickness increases to 6mm). System checking was performed using the flat section, whilst Head SAR tests used the left and right head profile sections. Body SAR testing also used the flat section between the head profiles.



SAM Twin Phantom

### 4.4. Device Holder

The device was placed in the device holder (illustrated below) that is supplied by SPEAG as an integral part of the DASY system.

The DASY device holder is designed to cope with the different positions given in the standard. It has two scales for device rotation (with respect to the body axis) and device inclination (with respect to the line between the ear reference points). The rotation centers for both scales is the ear reference point (ERP). Thus the device needs no repositioning when changing the angles.



Device holder supplied by SPEAG

## 4.5. Scanning Procedure

The DASY5 installation includes predefined files with recommended procedures for measurements and validation. They are read-only document files and destined as fully defined but unmeasured masks. All test positions (head or body-worn) are tested with the same configuration of test steps differing only in the grid definition for the different test positions.

The “reference” and “drift” measurements are located at the beginning and end of the batch process. They measure the field drift at one single point in the liquid over the complete procedure. The indicated drift is mainly the variation of the DUT’s output power and should vary max.  $\pm 5\%$ .

The “surface check” measurement tests the optical surface detection system of the DASY5 system by repeatedly detecting the surface with the optical and mechanical surface detector and comparing the results. The output gives the detecting heights of both systems, the difference between the two systems and the standard deviation of the detection repeatability. Air bubbles or refraction in the liquid due to separation of the sugar-water mixture gives poor repeatability (above  $\pm 0.1\text{mm}$ ). To prevent wrong results tests are only executed when the liquid is free of air bubbles. The difference between the optical surface detection and the actual surface depends on the probe and is specified with each probe (It does not depend on the surface reflectivity or the probe angle to the surface within  $\pm 30^\circ$ .)

### Area Scan

The Area Scan is used as a fast scan in two dimensions to find the area of high field values before running a detailed measurement around the hot spot. Before starting the area scan a grid spacing of 15 mm x 15 mm is set. During the scan the distance of the probe to the phantom remains unchanged. After finishing area scan, the field maxima within a range of 2 dB will be ascertained.

### Zoom Scan

Zoom Scans are used to estimate the peak spatial SAR values within a cubic averaging volume containing 1 g and 10 g of simulated tissue. The default Zoom Scan is done by 7x7x7 points within a cube whose base is centered around the maxima found in the preceding area scan.

### Spatial Peak Detection

The procedure for spatial peak SAR evaluation has been implemented and can determine values of masses of 1g and 10g, as well as for user-specific masses. The DASY5 system allows evaluations that combine measured data and robot positions, such as: • maximum search • extrapolation • boundary correction • peak search for averaged SAR. During a maximum search, global and local maxima searches are automatically performed in 2-D after each Area Scan measurement with at least 6 measurement points. It is based on the evaluation of the local SAR gradient calculated by the Quadratic Shepard’s method. The algorithm will find the global maximum and all local maxima within -2 dB of the global maxima for all SAR distributions.

Extrapolation routines are used to obtain SAR values between the lowest measurement points and the inner phantom surface. The extrapolation distance is determined by the surface detection distance and the probe sensor offset. Several measurements at different distances are necessary for the extrapolation. Extrapolation routines require at least 10 measurement points in 3-D space. They are used in the Zoom Scan to obtain SAR values between the lowest measurement points and the inner phantom surface. The routine uses the modified Quadratic Shepard’s method for extrapolation. For a grid using 7x7x7 measurement points with 5mm resolution amounting to 343 measurement points, the uncertainty of the extrapolation routines is less than 1% for 1g and 10g cubes.

A Z-axis scan measures the total SAR value at the x-and y-position of the maximum SAR value found during the cube 7x7x7 scan. The probe is moved away in z-direction from the bottom of the SAM phantom in 5mm steps.

## 4.6. Data Storage and Evaluation

### Data Storage

The DASY5 software stores the acquired data from the data acquisition electronics as raw data (in microvolt readings from the probe sensors), together with all necessary software parameters for the data evaluation (probe calibration data, liquid parameters and device frequency and modulation data) in measurement files with the extension “.DA4”. The software evaluates the desired unit and format for output each time the data is visualized or exported. This allows verification of the complete software setup even after the measurement and allows correction of incorrect parameter settings. For example, if a measurement has been performed with a wrong crest factor parameter in the device setup, the parameter can be corrected afterwards and the data can be re-evaluated.

The measured data can be visualized or exported in different units or formats, depending on the selected probe type ([V/m], [A/m], [°C], [mW/g], [mW/cm<sup>2</sup>], [dBrel], etc.). Some of these units are not available in certain situations or show meaningless results, e.g., a SAR output in a lossless media will always be zero. Raw data can also be exported to perform the evaluation with other software packages.

#### Data Evaluation

The SEMCAD software automatically executes the following procedures to calculate the field units from the microvolt readings at the probe connector. The parameters used in the evaluation are stored in the configuration modules of the software:

|                    |                           |                      |
|--------------------|---------------------------|----------------------|
| Probe parameters:  | - Sensitivity             | Normi, ai0, ai1, ai2 |
|                    | - Conversion factor       | ConvFi               |
|                    | - Diode compression point | Dcpi                 |
| Device parameters: | - Frequency               | f                    |
|                    | - Crest factor            | cf                   |
| Media parameters:  | - Conductivity            | $\sigma$             |
|                    | - Density                 | $\rho$               |

These parameters must be set correctly in the software. They can be found in the component documents or they can be imported into the software from the configuration files issued for the DASY5 components. In the direct measuring mode of the multimeter option, the parameters of the actual system setup are used. In the scan visualization and export modes, the parameters stored in the corresponding document files are used.

The first step of the evaluation is a linearization of the filtered input signal to account for the compression characteristics of the detector diode. The compensation depends on the input signal, the diode type and the DC-transmission factor from the diode to the evaluation electronics. If the exciting field is pulsed, the crest factor of the signal must be known to correctly compensate for peak power. The formula for each channel can be given as:

$$V_i = U_i + U_i^2 \cdot \frac{cf}{dcp_i}$$

|      |                  |                                   |                  |
|------|------------------|-----------------------------------|------------------|
| With | $V_i$            | = compensated signal of channel i | (i = x, y, z)    |
|      | $U_i$            | = input signal of channel i       | (i = x, y, z)    |
|      | cf               | = crest factor of exciting field  | (DASY parameter) |
|      | dcp <sub>i</sub> | = diode compression point         | (DASY parameter) |

From the compensated input signals the primary field data for each channel can be evaluated:

$$\text{E - fieldprobes : } E_i = \sqrt{\frac{V_i}{Norm_i \cdot ConvF}}$$

$$\text{H - fieldprobes : } H_i = \sqrt{V_i} \cdot \frac{a_{i0} + a_{i1}f + a_{i2}f^2}{f}$$

|      |                   |   |               |
|------|-------------------|---|---------------|
| With | $V_i$             | = compensated signal of channel i               | (i = x, y, z) |
|      | Norm <sub>i</sub> | = sensor sensitivity of channel i               | (i = x, y, z) |
|      |                   | [mV/(V/m) <sup>2</sup> ] for E-field Probes     |               |
|      | ConvF             | = sensitivity enhancement in solution           |               |
|      | a <sub>ij</sub>   | = sensor sensitivity factors for H-field probes |               |
|      | f                 | = carrier frequency [GHz]                       |               |
|      | $E_i$             | = electric field strength of channel i in V/m   |               |
|      | $H_i$             | = magnetic field strength of channel i in A/m   |               |

The RSS value of the field components gives the total field strength (Hermitian magnitude):

$$E_{tot} = \sqrt{E_x^2 + E_y^2 + E_z^2}$$

The primary field data are used to calculate the derived field units.

$$SAR = E_{tot}^2 \cdot \frac{\sigma}{\rho \cdot 1'000}$$

|      |           |  |
|------|-----------|--|
| with | SAR       | = local specific absorption rate in mW/g         |
|      | $E_{tot}$ | = total field strength in V/m                    |
|      | $\sigma$  | = conductivity in [mho/m] or [Siemens/m]         |
|      | $\rho$    | = equivalent tissue density in g/cm <sup>3</sup> |

Note that the density is normally set to 1 (or 1.06), to account for actual brain density rather than the density of the simulation liquid.

#### 4.7. Tissue Dielectric Parameters for Head and Body Phantoms

The liquid is consisted of water,salt,Glycol,Sugar,Preventol and Cellulose.The liquid has previously been proven to be suited for worst-case.The table 3 and table 4 show the detail solition.It's satisfying the latest tissue dielectric parameters requirements proposed by the KDB865664.

Table 3:Composition of the Head Tissue Equivalent Matter

| MIXTURE%                          | FREQUENCY(Brain) 835MHz                |
|-----------------------------------|--|
| Water                             | 41.45                                  |
| Sugar                             | 56                                     |
| Salt                              | 1.45                                   |
| Preventol                         | 0.12                                   |
| Cellulose                         | 1.0                                    |
| Dielectric Paramters Target Value | f=835MHz $\epsilon=41.50$ $\sigma=0.9$ |

| MIXTURE%                          | FREQUENCY(Brain) 1750MHz                 |
|-----------------------------------|--|
| Water                             | 55.24                                    |
| Glycol                            | 44.45                                    |
| Salt                              | 0.31                                     |
| Dielectric Paramters Target Value | f=1750MHz $\epsilon=40.10$ $\sigma=1.37$ |

| MIXTURE%                          | FREQUENCY(Brain) 1900MHz                 |
|-----------------------------------|--|
| Water                             | 55.242                                   |
| Glycol monobutyl                  | 44.452                                   |
| Salt                              | 0.306                                    |
| Dielectric Paramters Target Value | f=1900MHz $\epsilon=40.00$ $\sigma=1.40$ |

| MIXTURE%                          | FREQUENCY(Brain) 2450MHz                 |
|-----------------------------------|--|
| Water                             | 62.70                                    |
| Glycol                            | 36.80                                    |
| Salt                              | 0.50                                     |
| Dielectric Paramters Target Value | f=2450MHz $\epsilon=39.20$ $\sigma=1.80$ |

Table 4:Composition of the Body Tissue Equivalent Matter

| MIXTURE%                          | FREQUENCY(Brain) 835MHz                 |
|-----------------------------------|---|
| Water                             | 52.50                                   |
| Sugar                             | 45                                      |
| Salt                              | 1.40                                    |
| Preventol                         | 0.10                                    |
| Cellulose                         | 1.00                                    |
| Dielectric Paramters Target Value | f=835MHz $\epsilon=55.20$ $\sigma=0.97$ |

| MIXTURE%                          | FREQUENCY(Brain) 1750MHz                 |
|-----------------------------------|--|
| Water                             | 69.61                                    |
| Glycol                            | 29.97                                    |
| Salt                              | 0.12                                     |
| Dielectric Paramters Target Value | f=1750MHz $\epsilon=53.40$ $\sigma=1.49$ |

| MIXTURE%                          | FREQUENCY(Brain) 1900MHz                 |
|-----------------------------------|--|
| Water                             | 69.91                                    |
| Glycol monobutyl                  | 29.96                                    |
| Salt                              | 0.13                                     |
| Dielectric Paramters Target Value | f=1900MHz $\epsilon=53.30$ $\sigma=1.52$ |

| MIXTURE%                          | FREQUENCY(Brain) 2450MHz                 |
|-----------------------------------|--|
| Water                             | 73.20                                    |
| Glycol                            | 26.70                                    |
| Salt                              | 0.10                                     |
| Dielectric Paramters Target Value | f=2450MHz $\epsilon=52.70$ $\sigma=1.95$ |

### 4.8. Tissue equivalent liquid properties

Dielectric performance of Body tissue simulating liquid

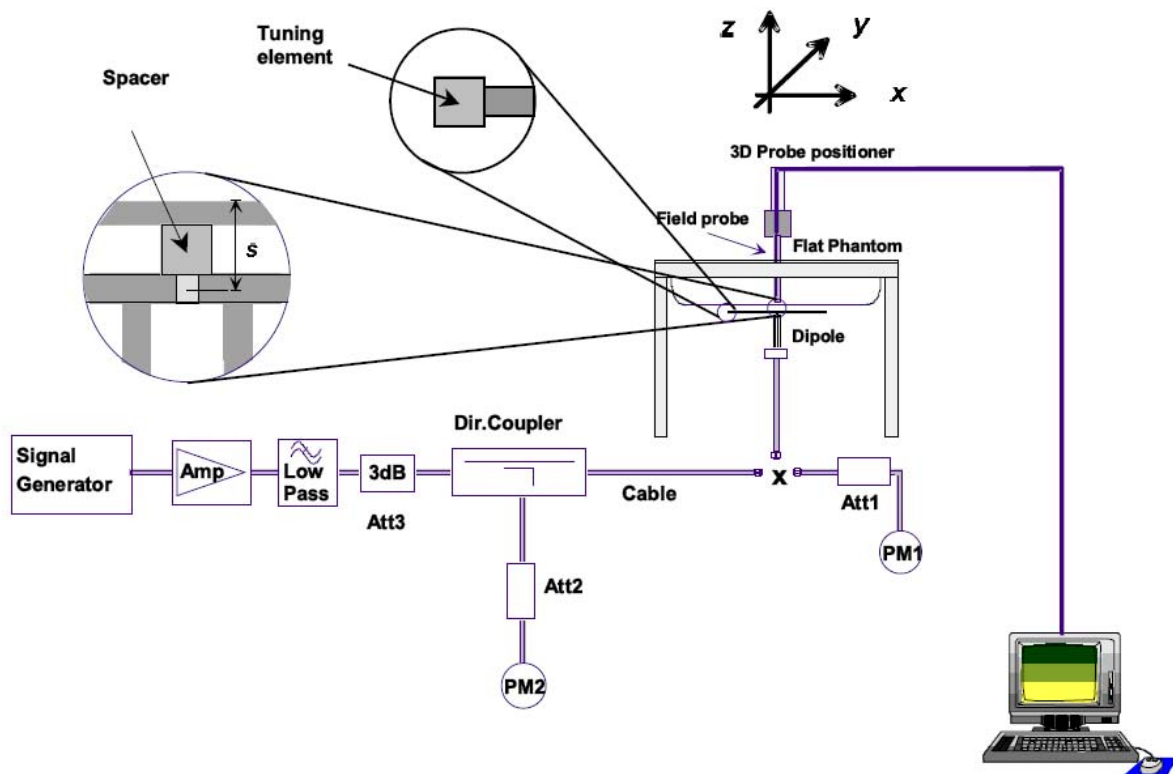
| Frequency     | Description                     | Dielectric parameters |                     |
|---------------|---------------------------------|-----------------------|---------------------|
|               |                                 | $\epsilon_r$          | $\sigma$            |
| 2450MHz(Body) | Target Value $\pm 5\%$          | 52.7<br>(50.1~55.3)   | 1.95<br>(1.85~2.05) |
|               | Measurement Value<br>2014-10-25 | 53.6                  | 1.98                |

### 4.9. System Check

The purpose of the system check is to verify that the system operates within its specifications at the device test frequency. The system check is simple check of repeatability to make sure that the system works correctly at the time of the compliance test;

System check results have to be equal or near the values determined during dipole calibration with the relevant liquids and test system ( $\pm 10\%$ ).

System check is performed regularly on all frequency bands where tests are performed with the DASY5 system.



The output power on dipole port must be calibrated to 24 dBm (250mW) before dipole is connected.



Photo of Dipole Setup

## System Validation of Body

| Measurement is made at temperature 22.0 °C and relative humidity 55%. |                 |                     |              |                       |              |             |              |
|---|-----------------|---------------------|--------------|-----------------------|--------------|-------------|--------------|
| Liquid temperature 22.0 °C  |                 |                     |              |                       |              |             |              |
| Measurement Date: 2450MHz Oct 25 <sup>th</sup> , 2014                 |                 |                     |              |                       |              |             |              |
| Verification results  | Frequency (MHz) | Target value (W/kg) |              | Measured value (W/kg) |              | Deviation   |              |
|   |                 | 1 g Average         | 10 g Average | 1 g Average           | 10 g Average | 1 g Average | 10 g Average |
|   | 2450            | 12.80               | 5.98         | 12.72                 | 5.95         | -0.62%      | 0.50%        |

## 4.10. SAR measurement procedure

### 4.10.1 Tests to be performed

In order to determine the highest value of the peak spatial-average SAR of a handset, all device positions, configurations and operational modes shall be tested for each frequency band according to steps 1 to 3 below. A flowchart of the test process is shown in Picture 11.1.

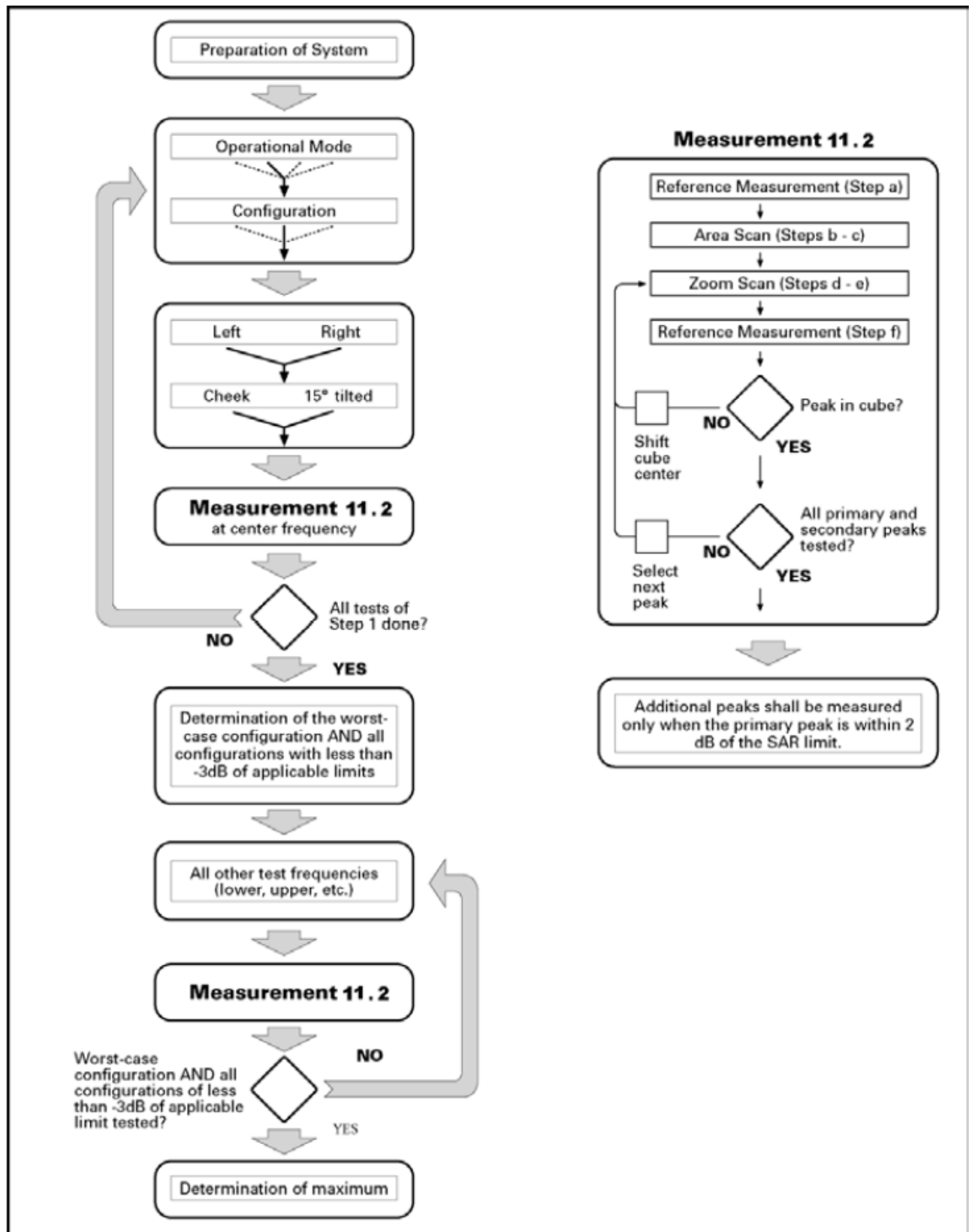
Step 1: The tests described in 11.2 shall be performed at the channel that is closest to the centre of the transmit frequency band ( $f_c$ ) for:

- all device positions (cheek and tilt, for both left and right sides of the SAM phantom);
- all configurations for each device position in a), e.g., antenna extended and retracted, and
- all operational modes, e.g., analogue and digital, for each device position in a) and configuration in b) in each frequency band.

If more than three frequencies need to be tested according to 11.1 (i.e.,  $N_c > 3$ ), then all frequencies, configurations and modes shall be tested for all of the above test conditions.

Step 2: For the condition providing highest peak spatial-average SAR determined in Step 1, perform all tests described in 11.2 at all other test frequencies, i.e., lowest and highest frequencies. In addition, for all other conditions (device position, configuration and operational mode) where the peak spatial-average SAR value determined in Step 1 is within 3 dB of the applicable SAR limit, it is recommended that all other test frequencies shall be tested as well.

Step 3: Examine all data to determine the highest value of the peak spatial-average SAR found in Steps 1 to 2.



Picture 10.1 Block diagram of the tests to be performed

#### 4.10.2 General Measurement Procedure

The area and zoom scan resolutions specified in the table below must be applied to the SAR measurements and fully documented in SAR reports to qualify for TCB approval. Probe boundary effect error compensation is required for measurements with the probe tip closer than half a probe tip diameter to the phantom surface. Both the probe tip diameter and sensor offset distance must satisfy measurement protocols; to ensure probe boundary effect errors are minimized and the higher fields closest to the phantom surface can be correctly measured and extrapolated to the phantom surface for computing 1-g SAR. Tolerances of the post-processing



algorithms must be verified by the test laboratory for the scan resolutions used in the SAR measurements, according to the reference distribution functions specified in IEEE Std 1528-2003. The results should be documented as part of the system validation records and may be requested to support test results when all the measurement parameters in the following table are not satisfied.

|   |                                    | $\leq 3$ GHz   | $> 3$ GHz   |  |
|---|------------------------------------|--|---|--|
| Maximum distance from closest measurement point (geometric center of probe sensors) to phantom surface  |                                    | $5 \pm 1$ mm   | $\frac{1}{2} \cdot \delta \cdot \ln(2) \pm 0.5$ mm                            |  |
| Maximum probe angle from probe axis to phantom surface normal at the measurement location   |                                    | $30^\circ \pm 1^\circ$   | $20^\circ \pm 1^\circ$  |  |
| Maximum area scan spatial resolution: $\Delta x_{Area}$ , $\Delta y_{Area}$   |                                    | $\leq 2$ GHz: $\leq 15$ mm<br>2 – 3 GHz: $\leq 12$ mm  | 3 – 4 GHz: $\leq 12$ mm<br>4 – 6 GHz: $\leq 10$ mm                            |  |
|   |                                    | When the x or y dimension of the test device, in the measurement plane orientation, is smaller than the above, the measurement resolution must be $\leq$ the corresponding x or y dimension of the test device with at least one measurement point on the test device. |   |  |
| Maximum zoom scan spatial resolution: $\Delta x_{Zoom}$ , $\Delta y_{Zoom}$   |                                    | $\leq 2$ GHz: $\leq 8$ mm<br>2 – 3 GHz: $\leq 5$ mm*   | 3 – 4 GHz: $\leq 5$ mm*<br>4 – 6 GHz: $\leq 4$ mm*                            |  |
| Maximum zoom scan spatial resolution, normal to phantom surface   | uniform grid: $\Delta z_{Zoom}(n)$ | $\leq 5$ mm  | 3 – 4 GHz: $\leq 4$ mm<br>4 – 5 GHz: $\leq 3$ mm<br>5 – 6 GHz: $\leq 2$ mm    |  |
|   | graded grid                        | $\Delta z_{Zoom}(1)$ : between 1 <sup>st</sup> two points closest to phantom surface   | $\leq 4$ mm   | 3 – 4 GHz: $\leq 3$ mm<br>4 – 5 GHz: $\leq 2.5$ mm<br>5 – 6 GHz: $\leq 2$ mm |
|   |                                    | $\Delta z_{Zoom}(n>1)$ : between subsequent points   | $\leq 1.5 \cdot \Delta z_{Zoom}(n-1)$   |  |
| Minimum zoom scan volume  | x, y, z                            | $\geq 30$ mm   | 3 – 4 GHz: $\geq 28$ mm<br>4 – 5 GHz: $\geq 25$ mm<br>5 – 6 GHz: $\geq 22$ mm |  |
| Note: $\delta$ is the penetration depth of a plane-wave at normal incidence to the tissue medium; see draft standard IEEE P1528-2011 for details.   |                                    |  |   |  |
| * When zoom scan is required and the <i>reported</i> SAR from the area scan based <i>1-g SAR estimation</i> procedures of KDB 447498 is $\leq 1.4$ W/kg, $\leq 8$ mm, $\leq 7$ mm and $\leq 5$ mm zoom scan resolution may be applied, respectively, for 2 GHz to 3 GHz, 3 GHz to 4 GHz and 4 GHz to 6 GHz. |                                    |  |   |  |

#### 4.10.3 WLAN Measurement Procedures for SAR

For WLAN SAR testing, WLAN engineering testing software installed on the DUT can provide continuous transmitting RF signal. The Tx power is set to 58 for 802.11 b mode, set to 48 for 802.11 g mode, set to 40 for 802.11 n mode by software. This RF signal utilized in SAR measurement has almost 100% duty cycle and its crest factor is 1.

For the 802.11b/g/n SAR tests, a communication link is set up with the test mode software for WIFI mode test. During the test, at the each test frequency channel, the EUT is operated at the RF continuous emission mode. Each channel should be tested at the highest power rate.

802.11b/g/n operating modes are tested independently according to the service requirements in each frequency band. 802.11b/g/n modes are tested on the maximum average output channel;

SAR is not required for 802.11g/n channels when the maximum average output power is less than 0.25dB higher than that measured on the corresponding 802.11b channels.

#### 4.10.4 Power Drift

To control the output power stability during the SAR test, DASY5 system calculates the power drift by measuring the E-field at the same location at the beginning and at the end of the measurement for each test position. These drift values can be found in Table 14.1 to Table 14.11 labeled as: (Power Drift [dB]). This ensures that the power drift during one measurement is within 5%.

#### 4.10.4 Area Scan Based 1-g SAR

##### 4.10.4.1 Requirement of KDB

According to the KDB447498 D01 v05, when the implementation is based the specific polynomial fit algorithm as presented at the 29th Bioelectromagnetics Society meeting (2007) and the estimated 1-g SAR is  $\leq 1.2$  W/kg, a zoom scan measurement is not required provided it is also not needed for any other purpose; for example, if the peak SAR location required for simultaneous transmission SAR test exclusion can be determined accurately by the SAR system or manually to discriminate between distinctive peaks and scattered noisy SAR distributions from area scans.

There must not be any warning or alert messages due to various measurement concerns identified by the SAR system; for example, noise in measurements, peaks too close to scan boundary, peaks are too sharp, spatial resolution and uncertainty issues etc. The SAR system verification must also demonstrate that the area scan estimated 1-g SAR is within 3% of the zoom scan 1-g SAR (See Annex B). When all the SAR results for each exposure condition in a frequency band and wireless mode are based on estimated 1-g SAR, the 1-g SAR for the highest SAR configuration must be determined by a zoom scan.

##### 4.10.4.2 Fast SAR Algorithms

The approach is based on the area scan measurement applying a frequency dependent attenuation parameter. This attenuation parameter was empirically determined by analyzing a large number of phones. The MOTOROLA FAST SAR was developed and validated by the MOTOROLA Research Group in Ft. Lauderdale.

In the initial study, an approximation algorithm based on Linear fit was developed. The accuracy of the algorithm has been demonstrated across a broad frequency range (136-2450 MHz) and for both 1- and 10-g averaged SAR using a sample of 264 SAR measurements from 55 wireless handsets. For the sample size studied, the root-mean-squared errors of the algorithm are 1.2% and 5.8% for 1- and 10-g averaged SAR, respectively

In the second step, the same research group optimized the fitting algorithm to an Polynomial fit whereby the frequency validity was extended to cover the range 30-6000MHz. Details of this study can be found in the BEMS 2007 Proceedings.

Both algorithms are implemented in DASY software.

## 5. TEST CONDITIONS AND RESULTS

### 5.1. Conducted Power Results

Max Conducted power measurement results and power drift from tune-up tolerance provide by manufacturer:

#### WLAN

| Mode           | Channel | Frequency (MHz) | Worst case Data rate of worst case | Conducted Output Power (dBm) |         |
|----------------|---------|-----------------|------------------------------------|------------------------------|---------|
|                |         |                 |                                    | Peak                         | Average |
| 802.11b        | 1       | 2412            | 1Mbps                              | 15.95                        | 10.03   |
|                | 6       | 2437            | 1Mbps                              | 16.15                        | 10.26   |
|                | 11      | 2462            | 1Mbps                              | 16.39                        | 10.12   |
| 802.11g        | 1       | 2412            | 6Mbps                              | 14.17                        | 8.45    |
|                | 6       | 2437            | 6Mbps                              | 14.51                        | 8.63    |
|                | 11      | 2462            | 6Mbps                              | 14.75                        | 8.77    |
| 802.11n(20MHz) | 1       | 2412            | 6.5 Mbps                           | 13.81                        | 7.84    |
|                | 6       | 2437            | 6.5 Mbps                           | 13.77                        | 7.69    |
|                | 11      | 2462            | 6.5 Mbps                           | 13.27                        | 7.16    |
| 802.11n(40MHz) | 3       | 2422            | 13.5 Mbps                          | 12.33                        | 6.48    |
|                | 6       | 2442            | 13.5 Mbps                          | 12.47                        | 6.53    |
|                | 9       | 2452            | 13.5 Mbps                          | 12.52                        | 6.66    |

**Note:** SAR is not required for 802.11g/n channels if the output power is less than 0.25dB higher than that measured on the corresponding 802.11b channels, and for each frequency band, testing at higher data rates and higher order modulations is not required when the maximum average output power for each of these configurations is less than 0.25dB higher than those measured at the lowest data rate. According to the above conducted power, the EUT should be tested for "802.11b, 1Mbps".

#### The conducted power measurement results for Bluetooth v4.0+EDR

| Mode          | Channel | Frequency (MHz) | Conducted Output Power (dBm) |         |
|---------------|---------|-----------------|------------------------------|---------|
|               |         |                 | Peak                         | Average |
| GFSK-BLE      | 00      | 2402            | 0.35                         | -1.23   |
|               | 19      | 2440            | 0.59                         | -1.01   |
|               | 39      | 2480            | 0.09                         | -1.85   |
| GFSK          | 00      | 2402            | 7.83                         | 2.34    |
|               | 39      | 2441            | 8.04                         | 2.52    |
|               | 78      | 2480            | 7.89                         | 2.40    |
| $\pi/4$ DQPSK | 00      | 2402            | 7.12                         | 1.87    |
|               | 39      | 2441            | 7.30                         | 2.01    |
|               | 78      | 2480            | 7.19                         | 1.92    |
| 8DPSK         | 00      | 2402            | 7.47                         | 2.14    |
|               | 39      | 2441            | 7.62                         | 2.46    |
|               | 78      | 2480            | 7.53                         | 2.28    |

#### WLAN

| 802.11b              |             |             |             |
|----------------------|-------------|-------------|-------------|
| Channel              | Channel 1   | Channel 6   | Channel 11  |
| Target (dBm)         | 10.0        | 10.0        | 10.0        |
| Tolerance $\pm$ (dB) | 1           | 1           | 1           |
| 802.11g              |             |             |             |
| Channel              | Channel 810 | Channel 661 | Channel 512 |
| Target (dBm)         | 8.0         | 8.0         | 8.0         |
| Tolerance $\pm$ (dB) | 1           | 1           | 1           |
| 802.11n(20MHz)       |             |             |             |
| Channel              | Channel 1   | Channel 6   | Channel 11  |
| Target (dBm)         | 7.0         | 7.0         | 7.0         |
| Tolerance $\pm$ (dB) | 1           | 1           | 1           |
| 802.11n(40MHz)       |             |             |             |
| Channel              | Channel 1   | Channel 6   | Channel 11  |
| Target (dBm)         | 6.0         | 6.0         | 6.0         |
| Tolerance $\pm$ (dB) | 1           | 1           | 1           |

| <b>Bluetooth</b>              |            |            |            |
|-------------------------------|------------|------------|------------|
| <b>GFSK-BLE</b>               |            |            |            |
| Channel                       | Channel 00 | Channel 19 | Channel 39 |
| Target (dBm)                  | -1.0       | -1.0       | -1.0       |
| Tolerance $\pm$ (dB)          | 1          | 1          | 1          |
| <b>GFSK</b>                   |            |            |            |
| Channel                       | Channel 00 | Channel 39 | Channel 78 |
| Target (dBm)                  | 2.0        | 2.0        | 2.0        |
| Tolerance $\pm$ (dB)          | 1          | 1          | 1          |
| <b><math>\pi/4</math>QPSK</b> |            |            |            |
| Channel                       | Channel 00 | Channel 39 | Channel 78 |
| Target (dBm)                  | 2.0        | 2.0        | 2.0        |
| Tolerance $\pm$ (dB)          | 1          | 1          | 1          |
| <b>8DPSK</b>                  |            |            |            |
| Channel                       | Channel 00 | Channel 39 | Channel 78 |
| Target (dBm)                  | 2.0        | 2.0        | 2.0        |
| Tolerance $\pm$ (dB)          | 1          | 1          | 1          |

## 5.2. Simultaneous TX SAR Considerations

### 5.2.1 Introduction

The following procedures adopted from “FCC SAR Considerations for Cell Phones with Multiple Transmitters” are applicable to handsets with built-in unlicensed transmitters such as 802.11 a/b/g devices which may simultaneously transmit with the licensed transmitter.

### 5.2.2 Transmit Antenna Separation Distances

The product can support WLAN function, according to following picture 1 showed that the diagonal dimension (29cm > 20cm) and figure 2 for antenna position of the DUT. So according to KDB 616217 and KDB447498 for SAR testing.



Figure 1: The diagonal dimension of the DUT

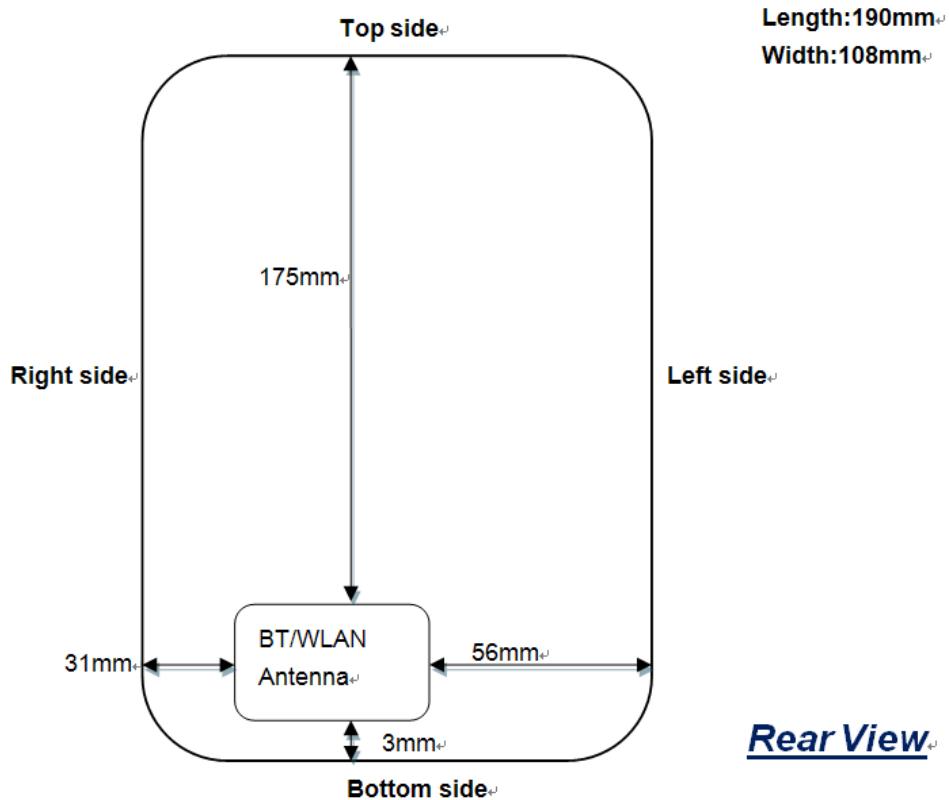


Figure 2: The antenna positions of the DUT

**5.2.3 SAR Measurement Positions**

According to KDB447498 Section 4.3.1 1) for test distance ≤50mm and 2) for test distance >50mm of SAR test exclusion threshold, refer to Figure 2 for antenna positions of the DUT; For test distance ≤50mm, SAR test exclusion as following table 1

Table 1 SAR test exclusion for test distance ≤50mm

| Mode | Position         | Distance (mm) | Maximum Output Power including tune-up tolerance (dBm) | Maximum Output Power including tune-up tolerance (mW) | Evaluated SAR test exclusion | SAR test exclusion thresholds | SAR test exclusion |
|------|------------------|---------------|--|---|------------------------------|-------------------------------|--------------------|
| WLAN | Front Side       | 0             | 11.00  | 12.59   | 3.9                          | 3.0                           | yes <sup>[1]</sup> |
|      | Rear Side        | 0             | 11.00  | 12.59   | 3.9                          | 3.0                           | no                 |
|      | Bottom Edge Side | 3             | 11.00  | 12.59   | 3.9                          | 3.0                           | no                 |
|      | Right Edge Side  | 31            | 11.00  | 12.59   | 0.7                          | 3.0                           | yes                |
| BT   | Front Side       | 0             | 3.00   | 2.00  | 0.6                          | 3.0                           | yes <sup>[1]</sup> |
|      | Rear Side        | 0             | 3.00   | 2.00  | 0.6                          | 3.0                           | yes                |
|      | Bottom Edge Side | 3             | 3.00   | 2.00  | 0.6                          | 3.0                           | yes                |
|      | Right Edge Side  | 31            | 3.00   | 2.00  | 0.3                          | 3.0                           | yes                |

For test distance >50mm, SAR test exclusion as following table 2

Table 2 SAR test exclusion for test distance >50mm

| Mode | Position        | Distance (mm) | Maximum Output Power including tune-up tolerance (dBm) | Maximum Output Power including tune-up tolerance (mW) | SAR test exclusion thresholds (mW) | SAR test exclusion |
|------|-----------------|---------------|--|---|------------------------------------|--------------------|
| WLAN | Leftt Edge Side | 56            | 11.00  | 12.59   | 60.38                              | yes                |
|      | Top Edge Side   | 175           | 11.00  | 12.59   | 1250.38                            | yes                |
| BT   | Leftt Edge Side | 56            | 3.00   | 2.00  | 60.38                              | yes                |
|      | Top Edge Side   | 175           | 3.00   | 2.00  | 1250.38                            | yes                |

Note: 1. Front side SAR test not required according to KDB 616217 D04 SAR for laptop and tablets v01;  
 2. According to KDB 447498 D01 Mobile Portable RF Exposure v05r02, When the minimum test separation distance is < 5 mm, a distance of 5 mm according to 5) in section 4.1 is applied to determine SAR test exclusion.

**5.2.4 Standalone SAR Test Exclusion Considerations**

Standalone 1-g head or body SAR evaluation by measurement or numerical simulation is not required when the corresponding SAR Exclusion Threshold condition, listed below, is satisfied.

The 1-g SAR test exclusion threshold for 100 MHz to 6 GHz at test separation distances ≤ 50 mm are determined by:

$$[(\text{max. power of channel, including tune-up tolerance, mW}) / (\text{min. test separation distance, mm})] \cdot [\sqrt{f(\text{GHz})}] \leq 3.0 \text{ for 1-g SAR, where}$$

- f(GHz) is the RF channel transmit frequency in GHz
- Power and distance are rounded to the nearest mW and mm before calculation
- The result is rounded to one decimal place for comparison

**Appendix A**

**SAR Test Exclusion Thresholds for 100 MHz – 6 GHz and ≤ 50 mm**

Approximate SAR Test Exclusion Power Thresholds at Selected Frequencies and Test Separation Distances are illustrated in the following Table.

| MHz  | 5  | 10 | 15  | 20  | 25  | mm                                |
|------|----|----|-----|-----|-----|-----------------------------------|
| 150  | 39 | 77 | 116 | 155 | 194 | SAR Test Exclusion Threshold (mW) |
| 300  | 27 | 55 | 82  | 110 | 137 |                                   |
| 450  | 22 | 45 | 67  | 89  | 112 |                                   |
| 835  | 16 | 33 | 49  | 66  | 82  |                                   |
| 900  | 16 | 32 | 47  | 63  | 79  |                                   |
| 1500 | 12 | 24 | 37  | 49  | 61  |                                   |
| 1900 | 11 | 22 | 33  | 44  | 54  |                                   |
| 2450 | 10 | 19 | 29  | 38  | 48  |                                   |
| 3600 | 8  | 16 | 24  | 32  | 40  |                                   |
| 5200 | 7  | 13 | 20  | 26  | 33  |                                   |
| 5400 | 6  | 13 | 19  | 26  | 32  |                                   |
| 5800 | 6  | 12 | 19  | 25  | 31  |                                   |

Picture 12.2 Power Thresholds

**5.2.5 Estimated SAR**

When standalone SAR is not required to be measured per FCC KDB 447498 D01, the following equation must be used to estimate the standalone 1g SAR for simultaneous transmission assessment involving that transmitter.

$$\text{Estimated SAR} = \frac{(\text{max. power of channel, including tune-up tolerance, mW}) \cdot \sqrt{f(\text{GHz})}}{(\text{min. test separation distance, mm}) \cdot 7.5}$$

Per FCC KD B447498 D01, simultaneous transmission SAR test exclusion may be applied when the sum of the 1-g SAR for all the transmitting antenna in a specific a physical test configuration is ≤ 1.6 W/Kg. When the sum is greater than the SAR limit, SAR test exclusion is determined by the SAR to peak location separation ratio.

$$\text{Ratio} = \frac{(SAR_1 + SAR_2)^{1.5}}{(\text{peak location separation, mm})} < 0.04$$

For Bluetooth v4.0, the Estimated SAR for 5mm to Estimated Body SAR

**Estimated SAR<sub>Body</sub> = ((2.00mW)/5mm) \* (1.5627/7.5) = 0.083W/Kg**

**5.3. SAR Measurement Results**

It is determined by user manual for the distance between the EUT and the phantom bottom. The distance is 5mm and just applied to the condition of body worn accessory.

The calculated SAR is obtained by the following formula:  
 Reported SAR = Measured SAR \* 10<sup>(P<sub>target</sub> - P<sub>measured</sub>)/10</sup>



$$\text{Scaling factor} = 10^{(P_{\text{target}} - P_{\text{measured}})/10}$$

$$\text{Reported SAR} = \text{Measured SAR} * \text{Scaling factor}$$

Where  $P_{\text{target}}$  is the power of manufacturing upper limit;

$P_{\text{measured}}$  is the measured power;

Measured SAR is measured SAR at measured power which including power drift)

Reported SAR which including Power Drift and Scaling factor

#### Duty Cycle

| Test Mode | Duty Cycle |
|-----------|------------|
| WLAN2450  | 1:1        |

#### SAR Values (WiFi2450z 802.11b-Body)

| Test Frequency |      | Test Position | Maximum Allowed Power (dBm) | Conducted Power (dBm) | Measurement SAR over 1g(W/kg) | Power drift | Scaling Factor | Reported SAR over 1g (W/kg) | SAR limit 1g (W/kg) | Ref. Plot # |
|----------------|------|---------------|-----------------------------|-----------------------|-------------------------------|-------------|----------------|-----------------------------|---------------------|-------------|
| Ch             | MHz  |               |                             |                       |                               |             |                |                             |                     |             |
| 6              | 2437 | Front         | 11.00                       | 10.26                 | N/A                           | N/A         | N/A            | N/A                         | N/A                 | N/A         |
| 6              | 2437 | Rear          | 11.00                       | 10.26                 | 0.625                         | -0.09       | 1.19           | 0.744                       | 1.60                | 1           |
| 6              | 2437 | Left          | 11.00                       | 10.26                 | N/A                           | N/A         | N/A            | N/A                         | N/A                 | N/A         |
| 6              | 2437 | Top           | 11.00                       | 10.26                 | N/A                           | N/A         | N/A            | N/A                         | N/A                 | N/A         |
| 6              | 2437 | Right         | 11.00                       | 10.26                 | N/A                           | N/A         | N/A            | N/A                         | N/A                 | N/A         |
| 6              | 2437 | Bottom        | 11.00                       | 10.26                 | 0.593                         | -0.02       | 1.19           | 0.706                       | 1.60                | --          |
| 1              | 2412 | Front         | 11.00                       | 10.03                 | N/A                           | N/A         | N/A            | N/A                         | N/A                 | N/A         |
| 1              | 2412 | Rear          | 11.00                       | 10.03                 | 0.565                         | -0.02       | 1.25           | 0.706                       | 1.60                | --          |
| 1              | 2412 | Left          | 11.00                       | 10.03                 | N/A                           | N/A         | N/A            | N/A                         | N/A                 | N/A         |
| 1              | 2412 | Top           | 11.00                       | 10.03                 | N/A                           | N/A         | N/A            | N/A                         | N/A                 | N/A         |
| 1              | 2412 | Right         | 11.00                       | 10.03                 | N/A                           | N/A         | N/A            | N/A                         | N/A                 | N/A         |
| 1              | 2412 | Bottom        | 11.00                       | 10.03                 | 0.524                         | -0.05       | 1.25           | 0.655                       | 1.60                | --          |
| 11             | 2462 | Front         | 11.00                       | 10.12                 | N/A                           | N/A         | N/A            | N/A                         | N/A                 | N/A         |
| 11             | 2462 | Rear          | 11.00                       | 10.12                 | 0.533                         | -0.08       | 1.22           | 0.650                       | 1.60                | --          |
| 11             | 2462 | Left          | 11.00                       | 10.12                 | N/A                           | N/A         | N/A            | N/A                         | N/A                 | N/A         |
| 11             | 2462 | Top           | 11.00                       | 10.12                 | N/A                           | N/A         | N/A            | N/A                         | N/A                 | N/A         |
| 11             | 2462 | Right         | 11.00                       | 10.12                 | N/A                           | N/A         | N/A            | N/A                         | N/A                 | N/A         |
| 11             | 2462 | Bottom        | 11.00                       | 10.12                 | 0.524                         | -0.09       | 1.22           | 0.639                       | 1.60                | --          |

Note: 1. According to KDB447498, When the 1-g SAR for the mid-band channel, or the channel with highest output power satisfy the following conditions, testing of the other channels in the band is not required.

$\leq 0.8 \text{ W/Kg}$  and transmission band  $\leq 100 \text{ MHz}$ ;

$\leq 0.6 \text{ W/Kg}$  and  $100 \text{ MHz} \leq \text{transmission band} \leq 200 \text{ MHz}$ ;

$\leq 0.4 \text{ W/Kg}$  and transmission band  $> 200 \text{ MHz}$

2. According to KDB 248227, Each channel should be tested at the lowest data rate in each mode.

#### 5.4. SAR Measurement Variability

SAR measurement variability must be assessed for each frequency band, which is determined by the SAR probe calibration point and tissue-equivalent medium used for the device measurements. When both head and body tissue-equivalent media are required for SAR measurements in a frequency band, the variability measurement procedures should be applied to the tissue medium with the highest measured SAR, using the highest measured SAR configuration for that tissue-equivalent medium. The following procedures are applied to determine if repeated measurements are required.

- 1) Repeated measurement is not required when the original highest measured SAR is  $< 0.80 \text{ W/kg}$ ; steps 2) through 4) do not apply.
- 2) When the original highest measured SAR is  $\geq 0.80 \text{ W/kg}$ , repeat that measurement once.
- 3) Perform a second repeated measurement only if the ratio of largest to smallest SAR for the original and first repeated measurements is  $> 1.20$  or when the original or repeated measurement is  $\geq 1.45 \text{ W/kg}$  ( $\sim 10\%$  from the 1-g SAR limit).
- 4) Perform a third repeated measurement only if the original, first or second repeated measurement is  $\geq 1.5 \text{ W/kg}$  and the ratio of largest to smallest SAR for the original, first and second repeated measurements is  $> 1.20$ .

## 5.5. Measurement Uncertainty (300MHz-3GHz)

| No.                 | Error Description                               | Type | Uncertainty Value | Probably Distribution | Div.       | (Ci) 1g | (Ci) 10g | Std. Unc. (1g) | Std. Unc. (10g) | Degree of freedom |
|---------------------|---|------|-------------------|-----------------------|------------|---------|----------|----------------|-----------------|-------------------|
| Measurement System  |   |      |                   |                       |            |         |          |                |                 |                   |
| 1                   | Probe calibration                               | B    | 5.50%             | N                     | 1          | 1       | 1        | 5.50%          | 5.50%           | $\infty$          |
| 2                   | Axial isotropy                                  | B    | 4.70%             | R                     | $\sqrt{3}$ | 0.7     | 0.7      | 1.90%          | 1.90%           | $\infty$          |
| 3                   | Hemispherical isotropy                          | B    | 9.60%             | R                     | $\sqrt{3}$ | 0.7     | 0.7      | 3.90%          | 3.90%           | $\infty$          |
| 4                   | Boundary Effects                                | B    | 1.00%             | R                     | $\sqrt{3}$ | 1       | 1        | 0.60%          | 0.60%           | $\infty$          |
| 5                   | Probe Linearity                                 | B    | 4.70%             | R                     | $\sqrt{3}$ | 1       | 1        | 2.70%          | 2.70%           | $\infty$          |
| 6                   | Detection limit                                 | B    | 1.00%             | R                     | $\sqrt{3}$ | 1       | 1        | 0.60%          | 0.60%           | $\infty$          |
| 7                   | RF ambient conditions-noise                     | B    | 0.00%             | R                     | $\sqrt{3}$ | 1       | 1        | 0.00%          | 0.00%           | $\infty$          |
| 8                   | RF ambient conditions-reflection                | B    | 0.00%             | R                     | $\sqrt{3}$ | 1       | 1        | 0.00%          | 0.00%           | $\infty$          |
| 9                   | Response time                                   | B    | 0.80%             | R                     | $\sqrt{3}$ | 1       | 1        | 0.50%          | 0.50%           | $\infty$          |
| 10                  | Integration time                                | B    | 5.00%             | R                     | $\sqrt{3}$ | 1       | 1        | 2.90%          | 2.90%           | $\infty$          |
| 11                  | RF ambient                                      | B    | 3.00%             | R                     | $\sqrt{3}$ | 1       | 1        | 1.70%          | 1.70%           | $\infty$          |
| 12                  | Probe positioned mech. restrictions             | B    | 0.40%             | R                     | $\sqrt{3}$ | 1       | 1        | 0.20%          | 0.20%           | $\infty$          |
| 13                  | Probe positioning with respect to phantom shell | B    | 2.90%             | R                     | $\sqrt{3}$ | 1       | 1        | 1.70%          | 1.70%           | $\infty$          |
| 14                  | Max.SAR evaluation                              | B    | 3.90%             | R                     | $\sqrt{3}$ | 1       | 1        | 2.30%          | 2.30%           | $\infty$          |
| Test Sample Related |   |      |                   |                       |            |         |          |                |                 |                   |
| 15                  | Test sample positioning                         | A    | 1.86%             | N                     | 1          | 1       | 1        | 1.86%          | 1.86%           | $\infty$          |
| 16                  | Device holder uncertainty                       | A    | 1.70%             | N                     | 1          | 1       | 1        | 1.70%          | 1.70%           | $\infty$          |
| 17                  | Drift of output power                           | B    | 5.00%             | R                     | $\sqrt{3}$ | 1       | 1        | 2.90%          | 2.90%           | $\infty$          |
| Phantom and Set-up  |   |      |                   |                       |            |         |          |                |                 |                   |
| 18                  | Phantom uncertainty                             | B    | 4.00%             | R                     | $\sqrt{3}$ | 1       | 1        | 2.30%          | 2.30%           | $\infty$          |
| 19                  | Liquid conductivity (target)                    | B    | 5.00%             | R                     | $\sqrt{3}$ | 0.64    | 0.43     | 1.80%          | 1.20%           | $\infty$          |
| 20                  | Liquid conductivity (meas.)                     | A    | 0.50%             | N                     | 1          | 0.64    | 0.43     | 0.32%          | 0.26%           | $\infty$          |
| 21                  | Liquid permittivity (target)                    | B    | 5.00%             | R                     | $\sqrt{3}$ | 0.64    | 0.43     | 1.80%          | 1.20%           | $\infty$          |
| 22                  | Liquid cpermittivity (meas.)                    | A    | 0.16%             | N                     | 1          | 0.64    | 0.43     | 0.10%          | 0.07%           | $\infty$          |



|  |  |   |   |     |   |   |        |        |          |
|--|--|---|---|-----|---|---|--------|--------|----------|
| Combined standard uncertainty                      | $u_c = \sqrt{\sum_{i=1}^{22} c_i^2 u_i^2}$ | / | / | /   | / | / | 10.20% | 10.00% | $\infty$ |
| Expanded uncertainty (confidence interval of 95 %) | $u_e = 2u_c$                               | / | R | K=2 | / | / | 20.40% | 20.00% | $\infty$ |

## 5.6. System Check Results

### System Performance Check at 2450 MHz Body

DUT: Dipole 2450 MHz; Type: D2450V2; Serial: 884

Date/Time: 25/10/2014 AM

Communication System: CW; Frequency: 2450 MHz; Duty Cycle: 1:1

Medium parameters used (interpolated):  $f = 2450$  MHz;  $\sigma = 1.99$  S/m;  $\epsilon_r = 53.70$ ;  $\rho = 1000$  kg/m<sup>3</sup>

Phantom section: Flat Section

DASY5 Configuration:

Probe: EX3DV3 - SN3842; ConvF(10.34, 10.34, 10.34); Calibrated: 06/06/2014;

Sensor-Surface: 3mm (Mechanical Surface Detection)

Electronics: DAE4 Sn1315; Calibrated: 02/27/2013

Phantom: SAM 1; Type: SAM;

Measurement SW: DASY52, Version 52.8 (1); SEMCAD X Version 14.6.5 (6469)

**Area Scan (61x91x1):** Measurement grid: dx=12.00 mm, dy=12.00 mm

Maximum value of SAR (interpolated) = 12.97W/kg

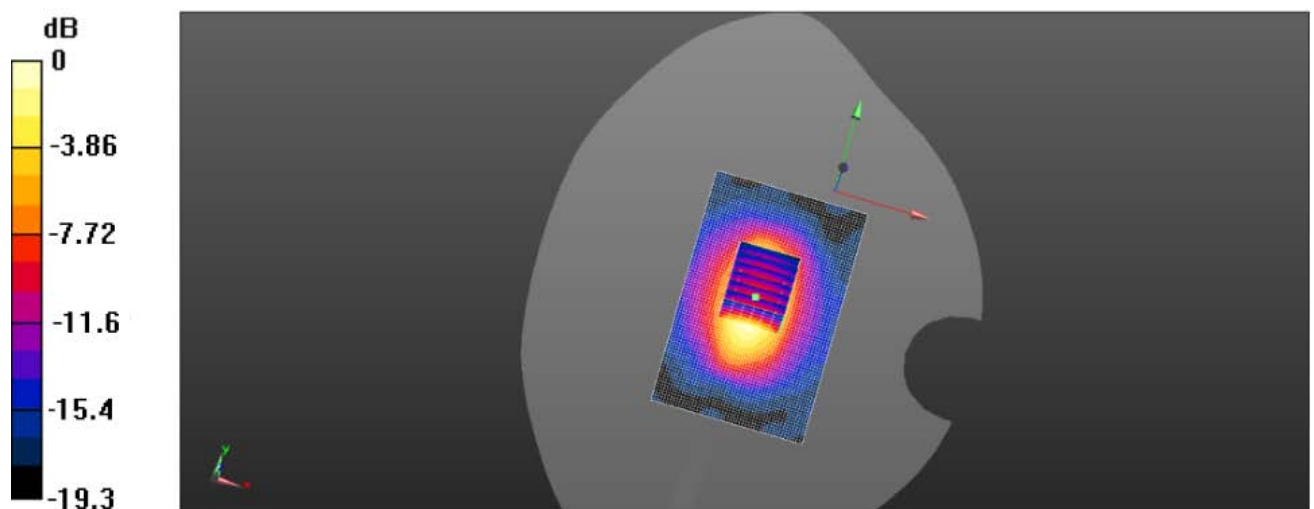
**Zoom Scan (7x7x7)/Cube 0:** Measurement grid: dx=5mm, dy=5mm, dz=5mm

Reference Value = 99.872 V/m; Power Drift = 0.0028 dB

Peak SAR (extrapolated) = 17.651 mW/g

**SAR(1 g) = 12.72 mW/g; SAR(10 g) = 5.95 mW/g**

Maximum value of SAR (measured) = 13.563 W/kg



0 dB = 13.56 mW/g = 22.647 dB mW/g

System Performance Check 2450MHz Body 250mW

## 5.7. SAR Test Graph Results

### WLAN2450 Rear Side Middle Channel -Channel 1-2412MHz (1Mbps)

Communication System: Customer System; Frequency: 2437 MHz; Duty Cycle: 1:1

Medium parameters used (interpolated):  $f = 2437$  MHz;  $\sigma = 2.01$  S/m;  $\epsilon_r = 53.12$ ;  $\rho = 1000$  kg/m<sup>3</sup>

Phantom section: Body- worn

Probe: EX3DV3 - SN3842; ConvF(10.34, 10.34, 10.34); Calibrated: 06/06/2014;

Sensor-Surface: 4mm (Mechanical Surface Detection)

Electronics: DAE4 Sn1315; Calibrated: 25/11/2013

Phantom: SAM 1; Type: SAM;

Measurement SW: DASY52, Version 52.8 (2); SEMCAD X Version 14.6.6 (6824)

**Area Scan (31x91x1):** Measurement grid:  $dx=1.50$  mm,  $dy=1.50$  mm

Maximum value of SAR (interpolated) = 0.637 W/kg

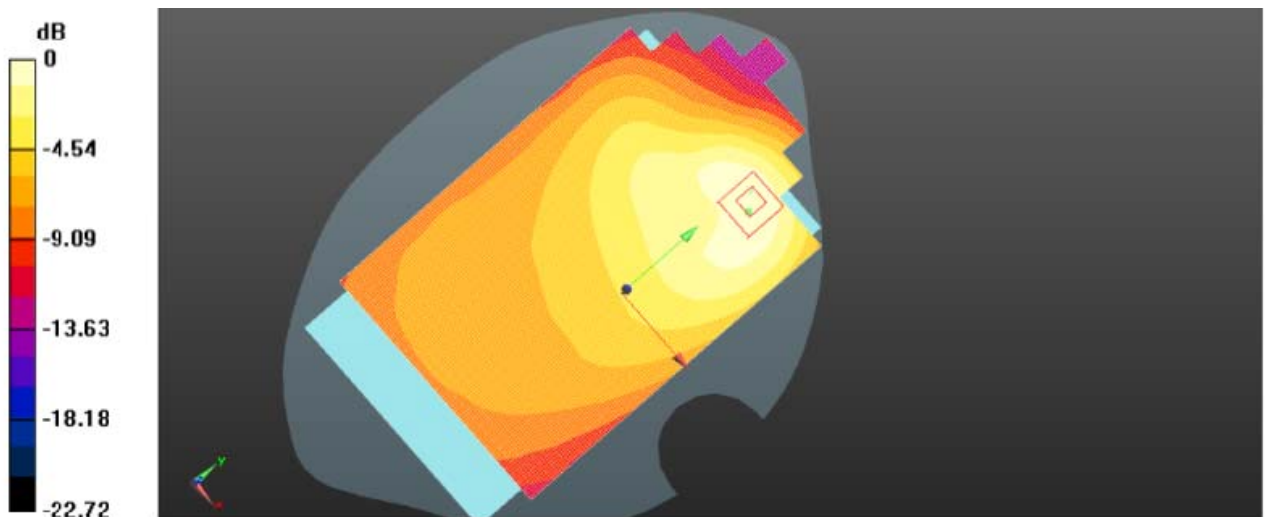
**Zoom Scan (7x7x5)/Cube 0:** Measurement grid:  $dx=5$ mm,  $dy=5$ mm,  $dz=5$ mm

Reference Value = 6.738 V/m; Power Drift = -0.09 dB

Peak SAR (extrapolated) = 0.874 W/Kg

**SAR(1 g) = 0.625 W/Kg; SAR(10 g) = 0.452 W/Kg**

Maximum value of SAR (measured) = 0.633 W/kg



Plot 1: WLAN2450 Rear Side Middle Channel -Channel 1-2412MHz (1Mbps)

## 6. Calibration Certificate

### 6.1. Probe Calibration Certificate

Calibration Laboratory of  
Schmid & Partner  
Engineering AG  
Zeughausstrasse 43, 8004 Zurich, Switzerland



S Schweizerischer Kalibrierdienst  
C Service suisse d'étalonnage  
S Servizio svizzero di taratura  
S Swiss Calibration Service

Accredited by the Swiss Accreditation Service (SAS)  
The Swiss Accreditation Service is one of the signatories to the EA  
Multilateral Agreement for the recognition of calibration certificates

Accreditation No.: SCS 108

Client **CIQ-SZ (Auden)**

Certificate No: EX3-3842\_Jun13

### CALIBRATION CERTIFICATE

Object **EX3DV4 - SN:3842**

Calibration procedure(s) **QA CAL-01.v8, QA CAL-12.v7, QA CAL-23.v4, QA CAL-25.v4  
Calibration procedure for dosimetric E-field probes**

Calibration date: **June 6, 2014**

This calibration certificate documents the traceability to national standards, which realize the physical units of measurements (SI).  
The measurements and the uncertainties with confidence probability are given on the following pages and are part of the certificate.

All calibrations have been conducted in the closed laboratory facility: environment temperature ( $22 \pm 3$ )°C and humidity < 70%.

Calibration Equipment used (M&TE critical for calibration)

| Primary Standards          | ID              | Cal Date (Certificate No.)        | Scheduled Calibration  |
|----------------------------|-----------------|-----------------------------------|------------------------|
| Power meter E4419B         | GB41293874      | 04-Apr-13 (No. 217-01733)         | Apr-14                 |
| Power sensor E4412A        | MY41498087      | 04-Apr-13 (No. 217-01733)         | Apr-14                 |
| Reference 3 dB Attenuator  | SN: S5054 (3c)  | 04-Apr-13 (No. 217-01737)         | Apr-14                 |
| Reference 20 dB Attenuator | SN: S5277 (20x) | 04-Apr-13 (No. 217-01735)         | Apr-14                 |
| Reference 30 dB Attenuator | SN: S5129 (30b) | 04-Apr-13 (No. 217-01738)         | Apr-14                 |
| Reference Probe ES3DV2     | SN: 3013        | 28-Dec-12 (No. ES3-3013_Dec12)    | Dec-13                 |
| DAE4                       | SN: 660         | 31-Jan-13 (No. DAE4-660_Jan13)    | Jan-14                 |
| Secondary Standards        | ID              | Check Date (in house)             | Scheduled Check        |
| RF generator HP 8648C      | US3642U01700    | 4-Aug-99 (in house check Apr-13)  | In house check: Apr-15 |
| Network Analyzer HP 8753E  | US37390585      | 18-Oct-01 (in house check Oct-12) | In house check: Oct-13 |

|                | Name           | Function              | Signature            |
|----------------|----------------|-----------------------|----------------------|
| Calibrated by: | Jeton Kastrati | Laboratory Technician |                      |
| Approved by:   | Katja Pokovic  | Technical Manager     |                      |
|                |                |                       | Issued: June 6, 2014 |

This calibration certificate shall not be reproduced except in full without written approval of the laboratory.

**Calibration Laboratory of  
Schmid & Partner  
Engineering AG**  
Zeughausstrasse 43, 8004 Zurich, Switzerland



**S** Schweizerischer Kalibrierdienst  
**C** Service suisse d'étalonnage  
**S** Servizio svizzero di taratura  
**S** Swiss Calibration Service

Accredited by the Swiss Accreditation Service (SAS)

The Swiss Accreditation Service is one of the signatories to the EA  
Multilateral Agreement for the recognition of calibration certificates

Accreditation No.: **SCS 108**

### Glossary:

|                          |   |
|--------------------------|---|
| TSL                      | tissue simulating liquid  |
| NORM <sub>x,y,z</sub>    | sensitivity in free space   |
| ConvF                    | sensitivity in TSL / NORM <sub>x,y,z</sub>  |
| DCP                      | diode compression point   |
| CF                       | crest factor (1/duty_cycle) of the RF signal  |
| A, B, C, D               | modulation dependent linearization parameters   |
| Polarization $\varphi$   | $\varphi$ rotation around probe axis  |
| Polarization $\vartheta$ | $\vartheta$ rotation around an axis that is in the plane normal to probe axis (at measurement center),<br>i.e., $\vartheta = 0$ is normal to probe axis |

### Calibration is Performed According to the Following Standards:

- IEEE Std 1528-2013, "IEEE Recommended Practice for Determining the Peak Spatial-Averaged Specific Absorption Rate (SAR) in the Human Head from Wireless Communications Devices: Measurement Techniques", December 2013
- IEC 62209-1, "Procedure to measure the Specific Absorption Rate (SAR) for hand-held devices used in close proximity to the ear (frequency range of 300 MHz to 3 GHz)", February 2005

### Methods Applied and Interpretation of Parameters:

- NORM<sub>x,y,z</sub>**: Assessed for E-field polarization  $\vartheta = 0$  ( $f \leq 900$  MHz in TEM-cell;  $f > 1800$  MHz: R22 waveguide). NORM<sub>x,y,z</sub> are only intermediate values, i.e., the uncertainties of NORM<sub>x,y,z</sub> does not affect the E<sup>2</sup>-field uncertainty inside TSL (see below ConvF).
- NORM(f)<sub>x,y,z</sub>** = NORM<sub>x,y,z</sub> \* frequency\_response (see Frequency Response Chart). This linearization is implemented in DASY4 software versions later than 4.2. The uncertainty of the frequency response is included in the stated uncertainty of ConvF.
- DCP<sub>x,y,z</sub>**: DCP are numerical linearization parameters assessed based on the data of power sweep with CW signal (no uncertainty required). DCP does not depend on frequency nor media.
- PAR**: PAR is the Peak to Average Ratio that is not calibrated but determined based on the signal characteristics
- A<sub>x,y,z</sub>; B<sub>x,y,z</sub>; C<sub>x,y,z</sub>; D<sub>x,y,z</sub>; VR<sub>x,y,z</sub>**: A, B, C, D are numerical linearization parameters assessed based on the data of power sweep for specific modulation signal. The parameters do not depend on frequency nor media. VR is the maximum calibration range expressed in RMS voltage across the diode.
- ConvF and Boundary Effect Parameters**: Assessed in flat phantom using E-field (or Temperature Transfer Standard for  $f \leq 800$  MHz) and inside waveguide using analytical field distributions based on power measurements for  $f > 800$  MHz. The same setups are used for assessment of the parameters applied for boundary compensation (alpha, depth) of which typical uncertainty values are given. These parameters are used in DASY4 software to improve probe accuracy close to the boundary. The sensitivity in TSL corresponds to NORM<sub>x,y,z</sub> \* ConvF whereby the uncertainty corresponds to that given for ConvF. A frequency dependent ConvF is used in DASY version 4.4 and higher which allows extending the validity from  $\pm 50$  MHz to  $\pm 100$  MHz.
- Spherical isotropy (3D deviation from isotropy)**: in a field of low gradients realized using a flat phantom exposed by a patch antenna.
- Sensor Offset**: The sensor offset corresponds to the offset of virtual measurement center from the probe tip (on probe axis). No tolerance required.

EX3DV4 – SN:3842

June 6, 2014

# Probe EX3DV4

## SN:3842

Manufactured: October 25, 2011  
Repaired: June 3, 2014  
Calibrated: June 6, 2014

Calibrated for DASY/EASY Systems  
(Note: non-compatible with DASY2 system!)

EX3DV4- SN:3842

June 6, 2014

**DASY/EASY - Parameters of Probe: EX3DV4 - SN:3842****Basic Calibration Parameters**

|   | Sensor X | Sensor Y | Sensor Z | Unc (k=2)     |
|---|----------|----------|----------|---------------|
| Norm ( $\mu\text{V}/(\text{V}/\text{m})^2$ ) <sup>A</sup> | 0.35     | 0.52     | 0.42     | $\pm 10.1 \%$ |
| DCP (mV) <sup>B</sup>                                     | 104.7    | 100.4    | 100.5    |               |

**Modulation Calibration Parameters**

| UID | Communication System Name |   | A<br>dB | B<br>dB $\sqrt{\mu\text{V}}$ | C   | D<br>dB | VR<br>mV | Unc <sup>E</sup><br>(k=2) |
|-----|---------------------------|---|---------|------------------------------|-----|---------|----------|---------------------------|
| 0   | CW                        | X | 0.0     | 0.0                          | 1.0 | 0.00    | 132.3    | $\pm 3.5 \%$              |
|     |                           | Y | 0.0     | 0.0                          | 1.0 |         | 162.7    |                           |
|     |                           | Z | 0.0     | 0.0                          | 1.0 |         | 147.6    |                           |

The reported uncertainty of measurement is stated as the standard uncertainty of measurement multiplied by the coverage factor  $k=2$ , which for a normal distribution corresponds to a coverage probability of approximately 95%.

<sup>A</sup> The uncertainties of NormX,Y,Z do not affect the  $E^2$ -field uncertainty inside TSL (see Pages 5 and 6).

<sup>B</sup> Numerical linearization parameter: uncertainty not required.

<sup>E</sup> Uncertainty is determined using the max. deviation from linear response applying rectangular distribution and is expressed for the square of the field value.

EX3DV4– SN:3842

June 6, 2014

**DASY/EASY - Parameters of Probe: EX3DV4 - SN:3842****Calibration Parameter Determined in Head Tissue Simulating Media**

| f (MHz) <sup>C</sup> | Relative Permittivity <sup>F</sup> | Conductivity (S/m) <sup>F</sup> | ConvF X | ConvF Y | ConvF Z | Alpha | Depth (mm) | Unct. (k=2) |
|----------------------|------------------------------------|---------------------------------|---------|---------|---------|-------|------------|-------------|
| 450                  | 43.5                               | 0.87                            | 10.00   | 10.00   | 10.00   | 0.15  | 1.10       | ± 13.4 %    |
| 835                  | 41.5                               | 0.91                            | 8.83    | 8.83    | 8.83    | 0.28  | 1.07       | ± 12.0 %    |
| 900                  | 41.5                               | 0.97                            | 8.78    | 8.78    | 8.78    | 0.32  | 1.00       | ± 12.0 %    |
| 1810                 | 40.0                               | 1.40                            | 7.68    | 7.68    | 7.68    | 0.38  | 0.88       | ± 12.0 %    |
| 1900                 | 40.0                               | 1.40                            | 7.55    | 7.55    | 7.55    | 0.50  | 0.77       | ± 12.0 %    |
| 2450                 | 39.2                               | 1.80                            | 7.26    | 7.26    | 7.26    | 0.71  | 0.63       | ± 12.0 %    |

<sup>C</sup> Frequency validity of ± 100 MHz only applies for DASY v4.4 and higher (see Page 2), else it is restricted to ± 50 MHz. The uncertainty is the RSS of the ConvF uncertainty at calibration frequency and the uncertainty for the indicated frequency band.

<sup>F</sup> At frequencies below 3 GHz, the validity of tissue parameters ( $\epsilon$  and  $\sigma$ ) can be relaxed to ± 10% if liquid compensation formula is applied to measured SAR values. At frequencies above 3 GHz, the validity of tissue parameters ( $\epsilon$  and  $\sigma$ ) is restricted to ± 5%. The uncertainty is the RSS of the ConvF uncertainty for indicated target tissue parameters.



EX3DV4- SN:3842

June 6, 2014

**DASY/EASY - Parameters of Probe: EX3DV4 - SN:3842****Calibration Parameter Determined in Body Tissue Simulating Media**

| f (MHz) <sup>C</sup> | Relative Permittivity <sup>F</sup> | Conductivity (S/m) <sup>F</sup> | ConvF X | ConvF Y | ConvF Z | Alpha | Depth (mm) | Unct. (k=2) |
|----------------------|------------------------------------|---------------------------------|---------|---------|---------|-------|------------|-------------|
| 450                  | 56.7                               | 0.94                            | 10.34   | 10.34   | 10.34   | 0.09  | 1.00       | ± 13.4 %    |
| 835                  | 55.2                               | 0.98                            | 9.09    | 9.09    | 9.09    | 0.42  | 0.84       | ± 12.0 %    |
| 900                  | 55.0                               | 1.05                            | 9.16    | 9.16    | 9.16    | 0.47  | 0.79       | ± 12.0 %    |
| 1810                 | 53.3                               | 1.52                            | 7.78    | 7.78    | 7.78    | 0.50  | 0.81       | ± 12.0 %    |
| 1900                 | 53.3                               | 1.52                            | 7.43    | 7.43    | 7.43    | 0.29  | 1.07       | ± 12.0 %    |
| 2450                 | 52.7                               | 1.95                            | 6.93    | 6.93    | 6.93    | 0.80  | 0.59       | ± 12.0 %    |

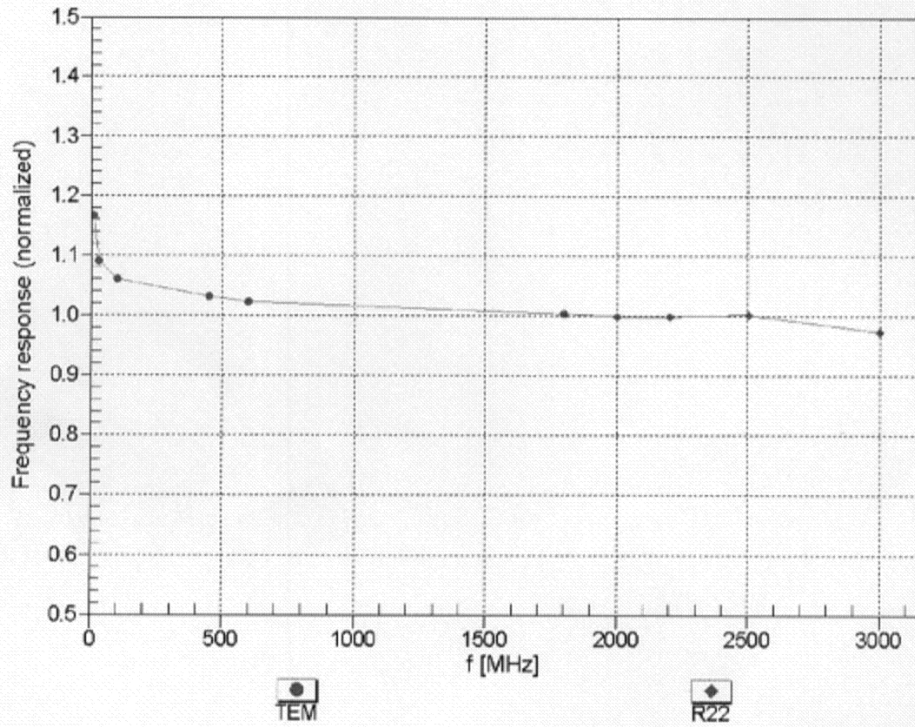
<sup>C</sup> Frequency validity of ± 100 MHz only applies for DASY v4.4 and higher (see Page 2), else it is restricted to ± 50 MHz. The uncertainty is the RSS of the ConvF uncertainty at calibration frequency and the uncertainty for the indicated frequency band.

<sup>F</sup> At frequencies below 3 GHz, the validity of tissue parameters ( $\epsilon$  and  $\sigma$ ) can be relaxed to ± 10% if liquid compensation formula is applied to measured SAR values. At frequencies above 3 GHz, the validity of tissue parameters ( $\epsilon$  and  $\sigma$ ) is restricted to ± 5%. The uncertainty is the RSS of the ConvF uncertainty for indicated target tissue parameters.

EX3DV4- SN:3842

June 6, 2014

### Frequency Response of E-Field (TEM-Cell: ifi110 EXX, Waveguide: R22)



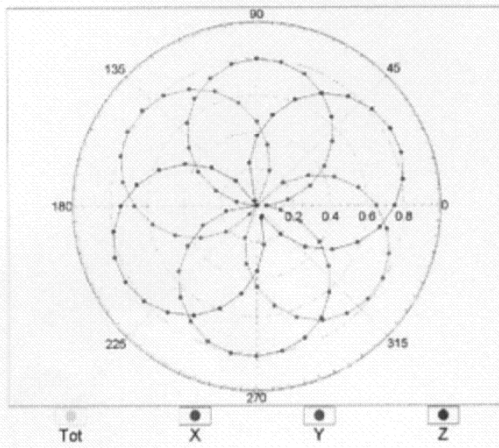
Uncertainty of Frequency Response of E-field:  $\pm 6.3\%$  (k=2)

EX3DV4- SN:3842

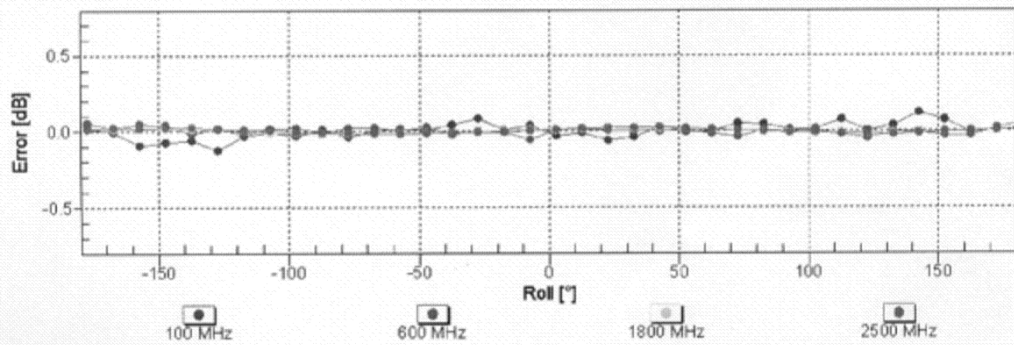
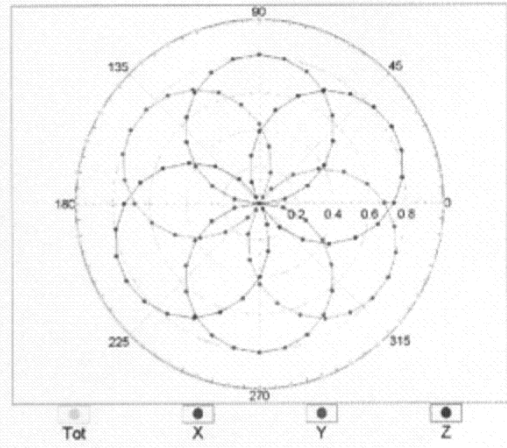
June 6, 2014

### Receiving Pattern ( $\phi$ ), $\theta = 0^\circ$

f=600 MHz,TEM



f=1800 MHz,R22

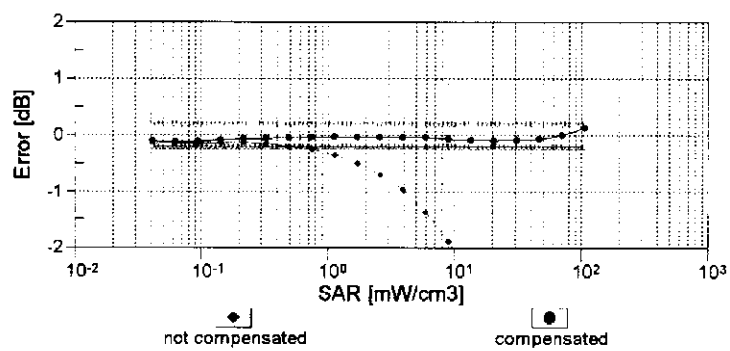
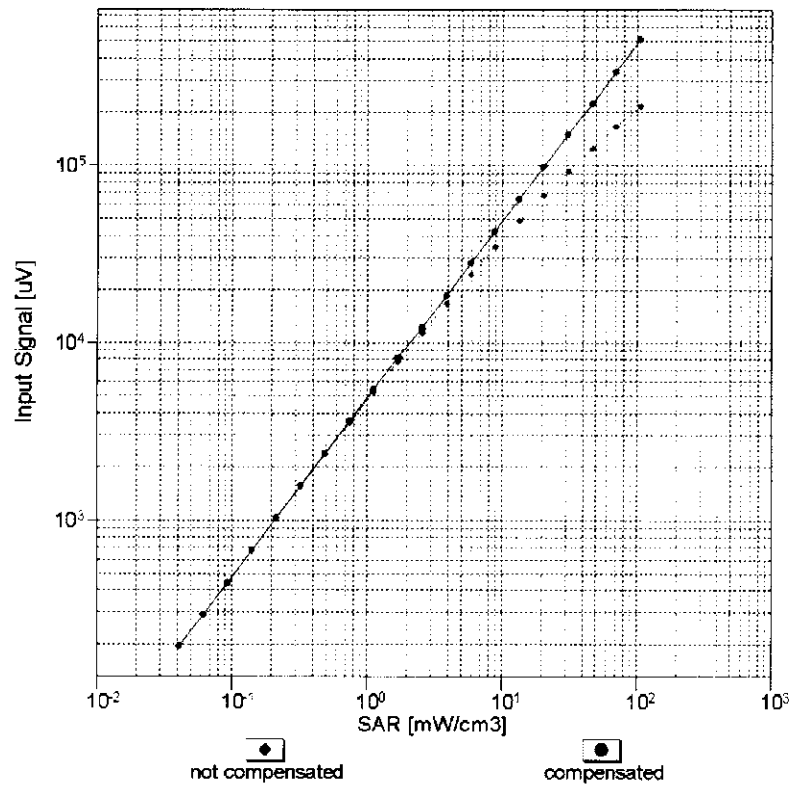


Uncertainty of Axial Isotropy Assessment:  $\pm 0.5\%$  (k=2)

EX3DV4- SN:3842

June 6, 2014

### Dynamic Range $f(\text{SAR}_{\text{head}})$ (TEM cell , $f = 900 \text{ MHz}$ )

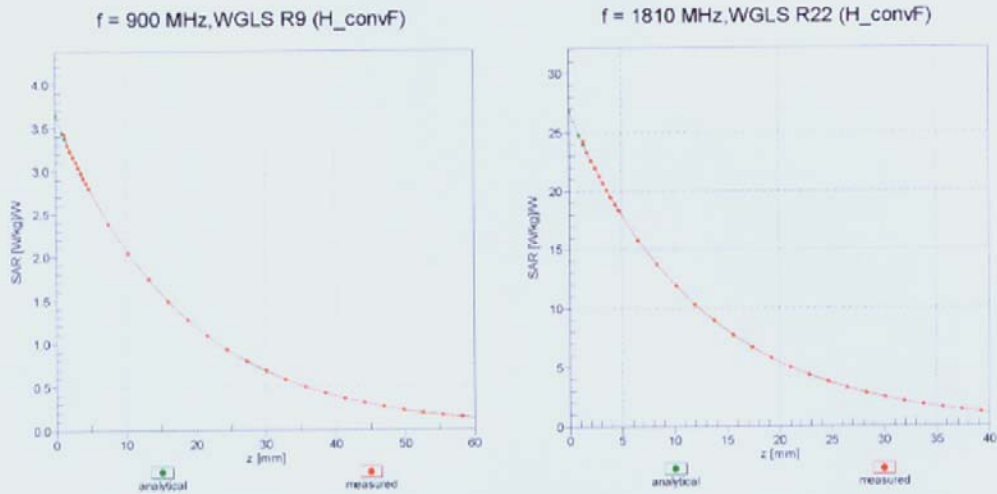


Uncertainty of Linearity Assessment:  $\pm 0.6\%$  ( $k=2$ )

EX3DV4- SN:3842

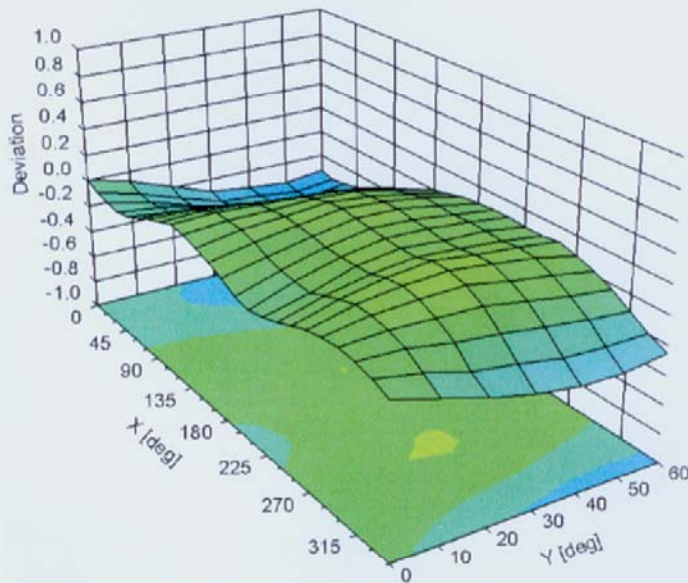
June 6, 2014

### Conversion Factor Assessment



### Deviation from Isotropy in Liquid

Error ( $\phi, \theta$ ), f = 900 MHz



Uncertainty of Spherical Isotropy Assessment:  $\pm 2.6\%$  (k=2)

EX3DV4- SN:3842

June 6, 2014

**DASY/EASY - Parameters of Probe: EX3DV4 - SN:3842****Other Probe Parameters**

|   |            |
|---|------------|
| Sensor Arrangement                            | Triangular |
| Connector Angle (°)                           | -117.4     |
| Mechanical Surface Detection Mode             | enabled    |
| Optical Surface Detection Mode                | disabled   |
| Probe Overall Length                          | 337 mm     |
| Probe Body Diameter                           | 10 mm      |
| Tip Length                                    | 9 mm       |
| Tip Diameter                                  | 2.5 mm     |
| Probe Tip to Sensor X Calibration Point       | 1 mm       |
| Probe Tip to Sensor Y Calibration Point       | 1 mm       |
| Probe Tip to Sensor Z Calibration Point       | 1 mm       |
| Recommended Measurement Distance from Surface | 2 mm       |



6.2. D2450V2 Dipole Calibration Certificate



In Collaboration with  
**s p e a g**  
 CALIBRATION LABORATORY

Add: No.52 Huayuanbei Road, Haidian District, Beijing, 100191, China  
 Tel: +86-10-62304633-2079 Fax: +86-10-62304633-2504  
 E-mail: Info@emcite.com Http://www.emcite.com



Client **CIQ SZ (Auden)**

Certificate No: **J13-2-3053**

**CALIBRATION CERTIFICATE**

Object **D2450V2 - SN: 884**

Calibration Procedure(s) **TMC-OS-E-02-194**  
**Calibration procedure for dipole validation kits**

Calibration date: **December 11, 2013**

This calibration Certificate documents the traceability to national standards, which realize the physical units of measurements(SI). The measurements and the uncertainties with confidence probability are given on the following pages and are part of the certificate.

All calibrations have been conducted in the closed laboratory facility: environment temperature(22±3)°C and humidity<70%.

Calibration Equipment used (M&TE critical for calibration)

| Primary Standards       | ID #       | Cal Date(Calibrated by, Certificate No.) | Scheduled Calibration |
|-------------------------|------------|--|-----------------------|
| Power Meter NRVD        | 102083     | 11-Sep-13 (TMC, No.JZ13-443)             | Sep-14                |
| Power sensor NRV-Z5     | 100595     | 11-Sep-13 (TMC, No. JZ13-443)            | Sep -14               |
| Reference Probe ES3DV3  | SN 3149    | 5- Sep-13 (SPEAG, No.ES3-3149_Sep13)     | Sep-14                |
| DAE4                    | SN 777     | 22-Feb-13 (SPEAG, DAE4-777_Feb13)        | Feb -14               |
| Signal Generator E4438C | MY49070393 | 13-Nov-13 (TMC, No.JZ13-394)             | Nov-14                |
| Network Analyzer E8362B | MY43021135 | 19-Oct-13 (TMC, No.JZ13-278)             | Oct-14                |

|                | Name        | Function                          | Signature |
|----------------|-------------|-----------------------------------|-----------|
| Calibrated by: | Zhao Jing   | SAR Test Engineer                 |           |
| Reviewed by:   | Qi Dianyuan | SAR Project Leader                |           |
| Approved by:   | Lu Bingsong | Deputy Director of the laboratory |           |

Issued: December 17, 2013

This calibration certificate shall not be reproduced except in full without written approval of the laboratory.



In Collaboration with

**s p e a g**  
**CALIBRATION LABORATORY**

Add: No.52 Huayuanbei Road, Haidian District, Beijing, 100191, China  
 Tel: +86-10-62304633-2079 Fax: +86-10-62304633-2504  
 E-mail: Info@emcite.com [Http://www.emcite.com](http://www.emcite.com)

**Glossary:**

|       |  |
|-------|--|
| TSL   | tissue simulating liquid                   |
| ConvF | sensitivity in TSL / NORM <sub>x,y,z</sub> |
| N/A   | not applicable or not measured             |

**Calibration is Performed According to the Following Standards:**

- IEEE Std 1528-2013, "IEEE Recommended Practice for Determining the Peak Spatial-Averaged Specific Absorption Rate (SAR) in the Human Head from Wireless Communications Devices: Measurement Techniques", June 2013
- IEC 62209-1, "Procedure to measure the Specific Absorption Rate (SAR) For hand-held devices used in close proximity to the ear (frequency range of 300MHz to 3GHz)", February 2005
- KDB865664, SAR Measurement Requirements for 100 MHz to 6 GHz

**Additional Documentation:**

- DASY4/5 System Handbook

**Methods Applied and Interpretation of Parameters:**

- Measurement Conditions:* Further details are available from the Validation Report at the end of the certificate. All figures stated in the certificate are valid at the frequency indicated.
- Antenna Parameters with TSL:* The dipole is mounted with the spacer to position its feed point exactly below the center marking of the flat phantom section, with the arms oriented parallel to the body axis.
- Feed Point Impedance and Return Loss:* These parameters are measured with the dipole positioned under the liquid filled phantom. The impedance stated is transformed from the measurement at the SMA connector to the feed point. The Return Loss ensures low reflected power. No uncertainty required.
- Electrical Delay:* One-way delay between the SMA connector and the antenna feed point. No uncertainty required.
- SAR measured:* SAR measured at the stated antenna input power.
- SAR normalized:* SAR as measured, normalized to an input power of 1 W at the antenna connector.
- SAR for nominal TSL parameters:* The measured TSL parameters are used to calculate the nominal SAR result.

The reported uncertainty of measurement is stated as the standard uncertainty of Measurement multiplied by the coverage factor  $k=2$ , which for a normal distribution Corresponds to a coverage probability of approximately 95%.





In Collaboration with  
**s p e a g**  
**CALIBRATION LABORATORY**

Add: No.52 Huayuanbei Road, Haidian District, Beijing, 100191, China  
Tel: +86-10-62304633-2079 Fax: +86-10-62304633-2504  
E-mail: Info@emcite.com [Http://www.emcite.com](http://www.emcite.com)

### Measurement Conditions

DASY system configuration, as far as not given on page 1.

|                              |                        |             |
|------------------------------|------------------------|-------------|
| DASY Version                 | DASY52                 | 52.8.7.1137 |
| Extrapolation                | Advanced Extrapolation |             |
| Phantom                      | Twin Phantom           |             |
| Distance Dipole Center - TSL | 10 mm                  | with Spacer |
| Zoom Scan Resolution         | dx, dy, dz = 5 mm      |             |
| Frequency                    | 2450 MHz $\pm$ 1 MHz   |             |

### Head TSL parameters

The following parameters and calculations were applied.

|   | Temperature         | Permittivity   | Conductivity         |
|---|---------------------|----------------|----------------------|
| Nominal Head TSL parameters             | 22.0 °C             | 39.2           | 1.80 mho/m           |
| Measured Head TSL parameters            | (22.0 $\pm$ 0.2) °C | 39.0 $\pm$ 6 % | 1.82 mho/m $\pm$ 6 % |
| Head TSL temperature change during test | <0.5 °C             | ----           | ----                 |

### SAR result with Head TSL

| SAR averaged over 1 $cm^3$ (1 g) of Head TSL   | Condition          |                                |
|--|--------------------|--------------------------------|
| SAR measured                                   | 250 mW input power | 13.0 mW / g                    |
| SAR for nominal Head TSL parameters            | normalized to 1W   | 51.7 mW / g $\pm$ 20.8 % (k=2) |
| SAR averaged over 10 $cm^3$ (10 g) of Head TSL | Condition          |                                |
| SAR measured                                   | 250 mW input power | 6.05 mW / g                    |
| SAR for nominal Head TSL parameters            | normalized to 1W   | 24.1 mW / g $\pm$ 20.4 % (k=2) |

### Body TSL parameters

The following parameters and calculations were applied.

|   | Temperature         | Permittivity   | Conductivity         |
|---|---------------------|----------------|----------------------|
| Nominal Body TSL parameters             | 22.0 °C             | 52.7           | 1.95 mho/m           |
| Measured Body TSL parameters            | (22.0 $\pm$ 0.2) °C | 52.8 $\pm$ 6 % | 1.94 mho/m $\pm$ 6 % |
| Body TSL temperature change during test | <0.5 °C             | ----           | ----                 |

### SAR result with Body TSL

| SAR averaged over 1 $cm^3$ (1 g) of Body TSL   | Condition          |                                |
|--|--------------------|--------------------------------|
| SAR measured                                   | 250 mW input power | 12.9 mW / g                    |
| SAR for nominal Body TSL parameters            | normalized to 1W   | 51.8 mW / g $\pm$ 20.8 % (k=2) |
| SAR averaged over 10 $cm^3$ (10 g) of Body TSL | Condition          |                                |
| SAR measured                                   | 250 mW input power | 5.98 mW / g                    |
| SAR for nominal Body TSL parameters            | normalized to 1W   | 24.0 mW / g $\pm$ 20.4 % (k=2) |



In Collaboration with  
**s p e a g**  
 CALIBRATION LABORATORY

Add: No.52 Huayuanbei Road, Haidian District, Beijing, 100191, China  
 Tel: +86-10-62304633-2079 Fax: +86-10-62304633-2504  
 E-mail: Info@emcite.com [Http://www.emcite.com](http://www.emcite.com)

## Appendix

### Antenna Parameters with Head TSL

|                                      |               |
|--------------------------------------|---------------|
| Impedance, transformed to feed point | 46.8Ω+ 3.76jΩ |
| Return Loss                          | - 25.9dB      |

### Antenna Parameters with Body TSL

|                                      |               |
|--------------------------------------|---------------|
| Impedance, transformed to feed point | 55.2Ω+ 2.38jΩ |
| Return Loss                          | - 25.4dB      |

### General Antenna Parameters and Design

|                                  |          |
|----------------------------------|----------|
| Electrical Delay (one direction) | 1.199 ns |
|----------------------------------|----------|

After long term use with 100W radiated power, only a slight warming of the dipole near the feedpoint can be measured.

The dipole is made of standard semirigid coaxial cable. The center conductor of the feeding line is directly connected to the second arm of the dipole. The antenna is therefore short-circuited for DC-signals. On some of the dipoles, small end caps are added to the dipole arms in order to improve matching when loaded according to the position as explained in the "Measurement Conditions" paragraph. The SAR data are not affected by this change. The overall dipole length is still according to the Standard.

No excessive force must be applied to the dipole arms, because they might bend or the soldered connections near the feedpoint may be damaged.

### Additional EUT Data

|                 |       |
|-----------------|-------|
| Manufactured by | SPEAG |
|-----------------|-------|



Add: No.52 Huayuanbei Road, Haidian District, Beijing, 100191, China  
Tel: +86-10-62304633-2079 Fax: +86-10-62304633-2504  
E-mail: Info@emcite.com [Http://www.emcite.com](http://www.emcite.com)

### DASY5 Validation Report for Head TSL

Date: 12.10.2013

Test Laboratory: TMC, Beijing, China

DUT: Dipole 2450 MHz; Type: D2450V2; Serial: D2450V2 - SN: 884

Communication System: CW; Frequency: 2450 MHz

Medium parameters used:  $f = 2450$  MHz;  $\sigma = 1.817$  mho/m;  $\epsilon_r = 38.96$ ;  $\rho = 1000$  kg/m<sup>3</sup>

Phantom section: Flat Section

Measurement Standard: DASY5 (IEEE/IEC/ANSI C63.19-2007)

#### DASY5 Configuration:

- Probe: ES3DV3 - SN3149; ConvF(4.48,4.48,4.48); Calibrated: 2013/9/5
- Sensor-Surface: 3mm (Mechanical Surface Detection)
- Electronics: DAE4 Sn777; Calibrated: 22/2/2013
- Phantom: SAM 1593; Type: QD000P40CC;
- DASY52 52.8.7(1137); SEMCAD X Version 14.6.10 (7164)

#### Dipole Calibration for Head Tissue/Pin=250mW, d=10mm/Zoom Scan

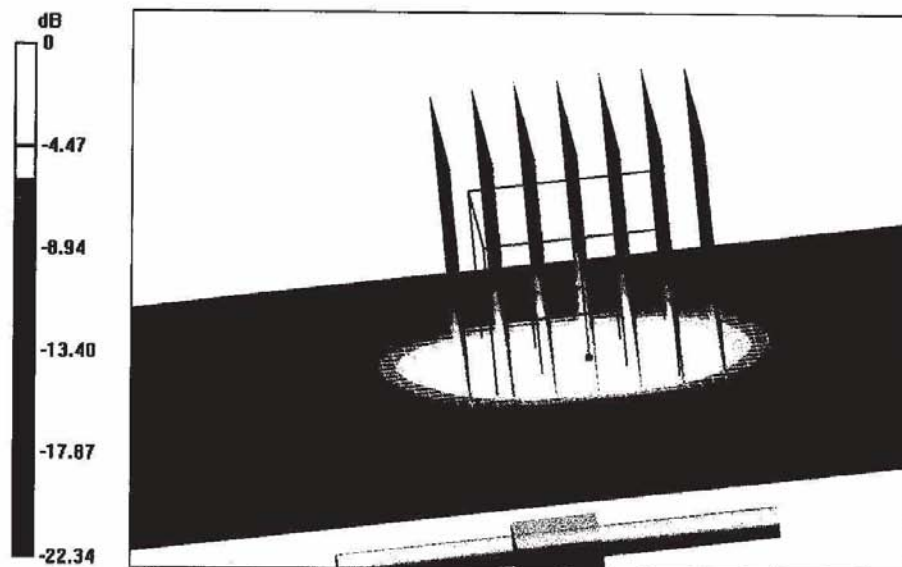
(7x7x7)/Cube 0: Measurement grid: dx=5mm, dy=5mm, dz=5mm

Reference Value = 86.529 V/m; Power Drift = -0.07 dB

Peak SAR (extrapolated) = 27.0 W/kg

**SAR(1 g) = 13 W/kg; SAR(10 g) = 6.05 W/kg**

Maximum value of SAR (measured) = 16.2 W/kg



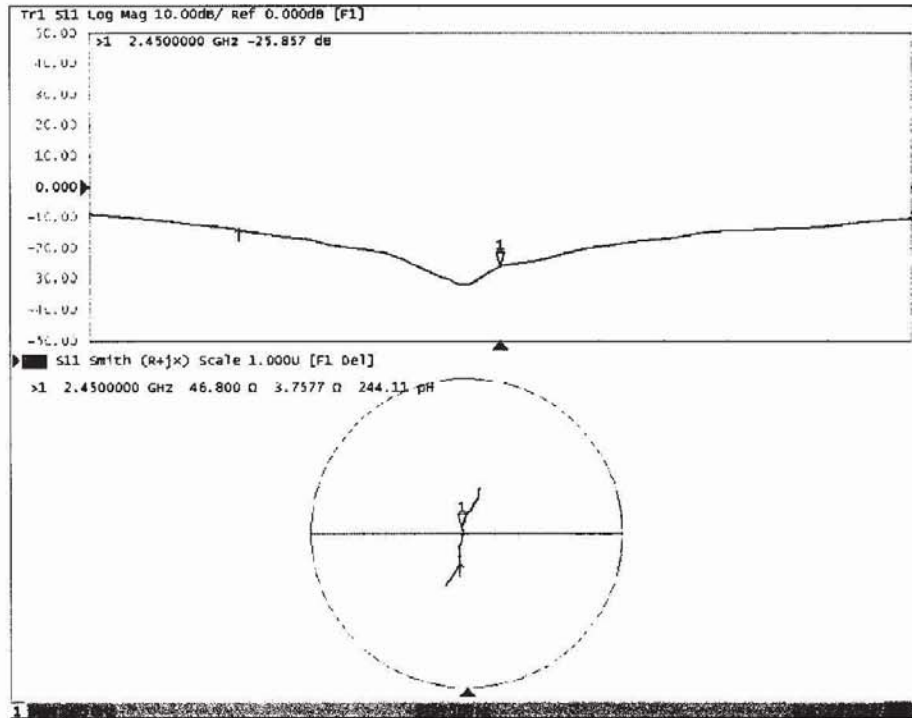
0 dB = 16.2 W/kg = 12.10 dBW/kg



In Collaboration with  
**s p e a g**  
CALIBRATION LABORATORY

Add: No.52 Huayuanbei Road, Haidian District, Beijing, 100191, China  
Tel: +86-10-62304633-2079 Fax: +86-10-62304633-2504  
E-mail: Info@emcite.com [Http://www.emcite.com](http://www.emcite.com)

### Impedance Measurement Plot for Head TSL







In Collaboration with

**s p e a g****CALIBRATION LABORATORY**

Add: No.52 Huayuanbei Road, Haidian District, Beijing, 100191, China  
 Tel: +86-10-62304633-2079 Fax: +86-10-62304633-2504  
 E-mail: Info@emcite.com Http://www.emcite.com

**DASY5 Validation Report for Body TSL**

Date: 12.11.2013

Test Laboratory: TMC, Beijing, China

**DUT: Dipole 2450 MHz; Type: D2450V2; Serial: D2450V2 - SN: 884**

Communication System: CW; Frequency: 2450 MHz;

Medium parameters used:  $f = 2450$  MHz;  $\sigma = 1.939$  mho/m;  $\epsilon_r = 52.97$ ;  $\rho = 1000$  kg/m<sup>3</sup>

Phantom section: Flat Phantom

Measurement Standard: DASY5 (IEEE/IEC/ANSI C63.19-2007)

**DASY5 Configuration:**

- Probe: ES3DVS - SN3149; ConvF(4.21,4.21,4.21) ; Calibrated: 2013/9/5
- Sensor-Surface: 3mm (Mechanical Surface Detection)
- Electronics: DAE4 Sn777; Calibrated: 22/2/2013
- Phantom: SAM1186; Type: QD000P40CC;
- DASY52 52.8.7(1137); SEMCAD X Version 14.6.10 (7164)

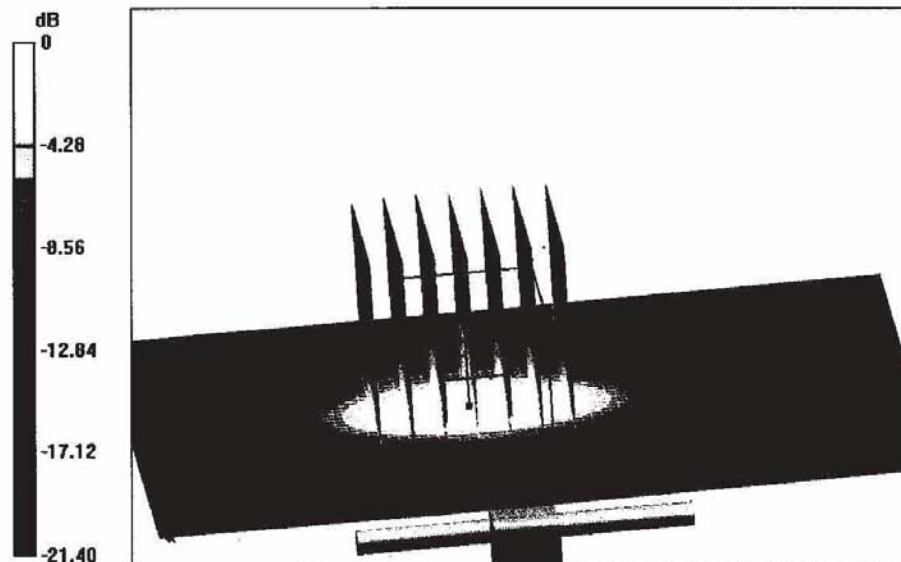
**Dipole Calibration for Body Tissue/Pin=250mW, d=10mm/Zoom Scan****(7x7x7)/Cube 0:** Measurement grid: dx=5mm, dy=5mm, dz=5mm

Reference Value = 84.687 V/m; Power Drift = -0.03 dB

Peak SAR (extrapolated) = 27.1 W/kg

**SAR(1 g) = 12.9 W/kg; SAR(10 g) = 5.98 W/kg**

Maximum value of SAR (measured) = 16.0 W/kg



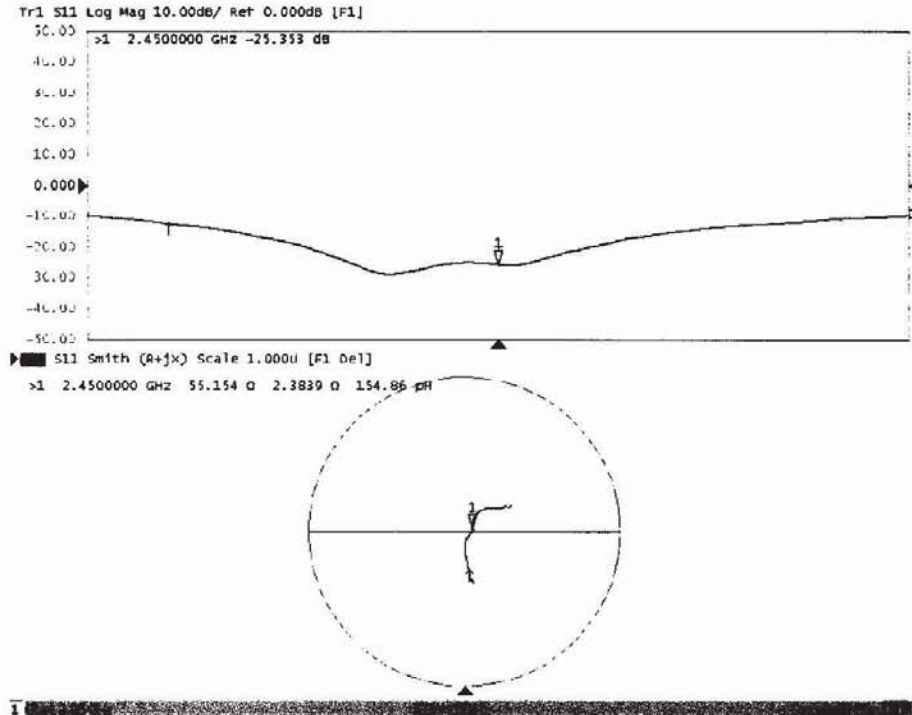
0 dB = 16.0 W/kg = 12.04 dBW/kg



In Collaboration with  
**s p e a g**  
CALIBRATION LABORATORY

Add: No.52 Huayuanbei Road, Haidian District, Beijing, 100191, China  
Tel: +86-10-62304633-2079 Fax: +86-10-62304633-2504  
E-mail: Info@emcite.com [Http://www.emcite.com](http://www.emcite.com)

### Impedance Measurement Plot for Body TSL



6.3. DAE4 Calibration Certificate



In Collaboration with  
**s p e a g**  
 CALIBRATION LABORATORY

Add: No.52 Huayuanbei Road, Haidian District, Beijing, 100191, China  
 Tel: +86-10-62304633-2079 Fax: +86-10-62304633-2504  
 E-mail: [info@emcite.com](mailto:info@emcite.com) Http://www.emcite.com



Client : **CIQ SZ (Auden)**

Certificate No: **J13-2-3048**

| <b>CALIBRATION CERTIFICATE</b>   |  |  |                           |
|--|--|--|---------------------------|
| Object   | DAE4 - SN: 1315  |  |                           |
| Calibration Procedure(s)   | TMC-OS-E-01-198<br>Calibration Procedure for the Data Acquisition Electronics (DAEx) |  |                           |
| Calibration date:  | November 25, 2013  |  |                           |
| <p>This calibration Certificate documents the traceability to national standards, which realize the physical units of measurements(SI). The measurements and the uncertainties with confidence probability are given on the following pages and are part of the certificate.</p> <p>All calibrations have been conducted in the closed laboratory facility: environment temperature(22±3)°C and humidity&lt;70%.</p> <p>Calibration Equipment used (M&amp;TE critical for calibration)</p> |  |  |                           |
| Primary Standards  | ID #   | Cal Date(Calibrated by, Certificate No.) | Scheduled Calibration     |
| Documenting Process Calibrator 753   | 1971018  | 01-July-13 (TMC, No:JW13-049)            | July-14                   |
| Calibrated by:   | Name<br>Yu zongying  | Function<br>SAR Test Engineer            | Signature<br>             |
| Reviewed by:   | Qi Dianyuan  | SAR Project Leader                       |                           |
| Approved by:   | Lu Bingsong  | Deputy Director of the laboratory        |                           |
|  |  |  | Issued: November 25, 2013 |
| This calibration certificate shall not be reproduced except in full without written approval of the laboratoty.  |  |  |                           |



In Collaboration with

**s p e a g**  
**CALIBRATION LABORATORY**

Add: No.52 Huayuanbei Road, Haidian District, Beijing, 100191, China  
Tel: +86-10-62304633-2079 Fax: +86-10-62304633-2504  
E-mail: [Info@emcite.com](mailto:Info@emcite.com) Http://www.emcite.com

**Glossary:**

DAE data acquisition electronics  
Connector angle information used in DASY system to align probe sensor X to the robot coordinate system.

**Methods Applied and Interpretation of Parameters:**

- *DC Voltage Measurement:* Calibration Factor assessed for use in DASY system by comparison with a calibrated instrument traceable to national standards. The figure given corresponds to the full scale range of the voltmeter in the respective range.
- *Connector angle:* The angle of the connector is assessed measuring the angle mechanically by a tool inserted. Uncertainty is not required.
- The report provide only calibration results for DAE, it does not contain other performance test results.





In Collaboration with

**s p e a g****CALIBRATION LABORATORY**

Add: No.52 Huayuanbei Road, Haidian District, Beijing, 100191, China  
 Tel: +86-10-62304633-2079 Fax: +86-10-62304633-2504  
 E-mail: [Info@emcite.com](mailto:Info@emcite.com) Http://www.emcite.com

**DC Voltage Measurement**

A/D - Converter Resolution nominal

High Range: 1LSB = 6.1 $\mu$ V, full range = -100...+300 mV

Low Range: 1LSB = 61nV, full range = -1.....+3mV

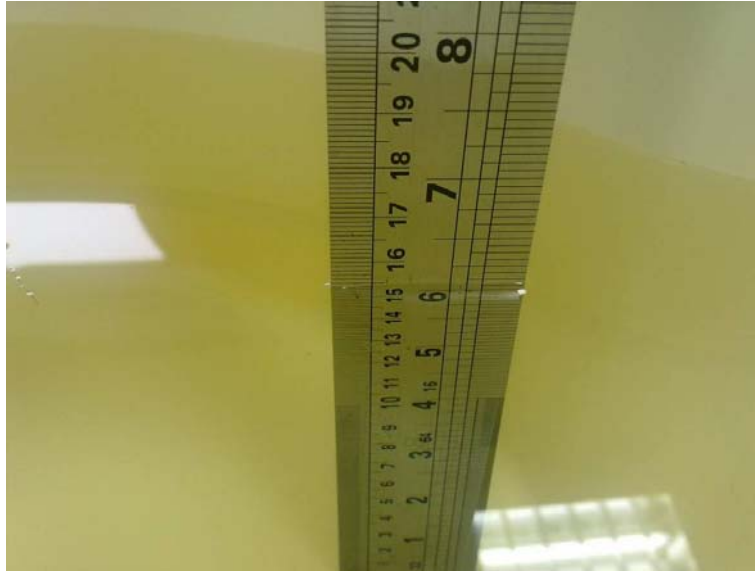
DASY measurement parameters: Auto Zero Time: 3 sec; Measuring time: 3 sec

| Calibration Factors | X                         | Y                         | Z                         |
|---------------------|---------------------------|---------------------------|---------------------------|
| High Range          | 403.915 $\pm$ 0.15% (k=2) | 405.171 $\pm$ 0.15% (k=2) | 404.667 $\pm$ 0.15% (k=2) |
| Low Range           | 3.98903 $\pm$ 0.7% (k=2)  | 3.94180 $\pm$ 0.7% (k=2)  | 3.93862 $\pm$ 0.7% (k=2)  |

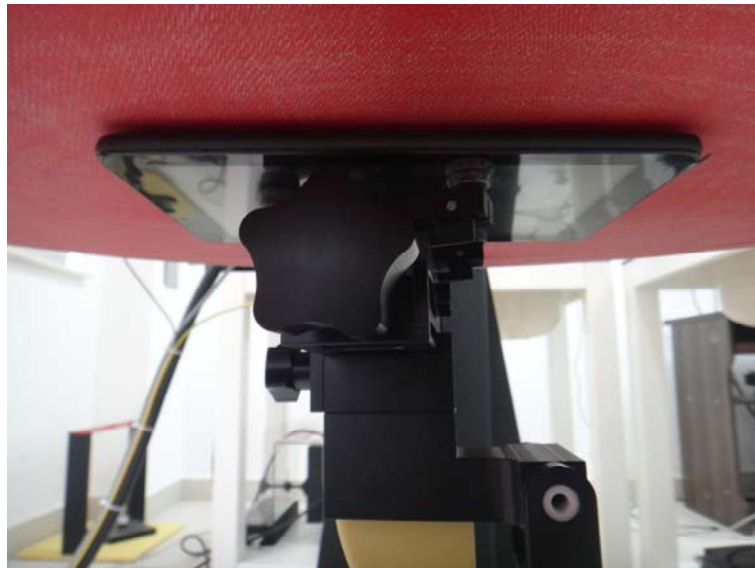
**Connector Angle**

|   |                 |
|---|-----------------|
| Connector Angle to be used in DASY system | 162.5° $\pm$ 1° |
|---|-----------------|

## 7. Test Setup Photos



Photograph of the depth in the Body Phantom (2450MHz)



0mm Body Rear Side Setup Photo



0mm Body Bottom Side Setup Photo

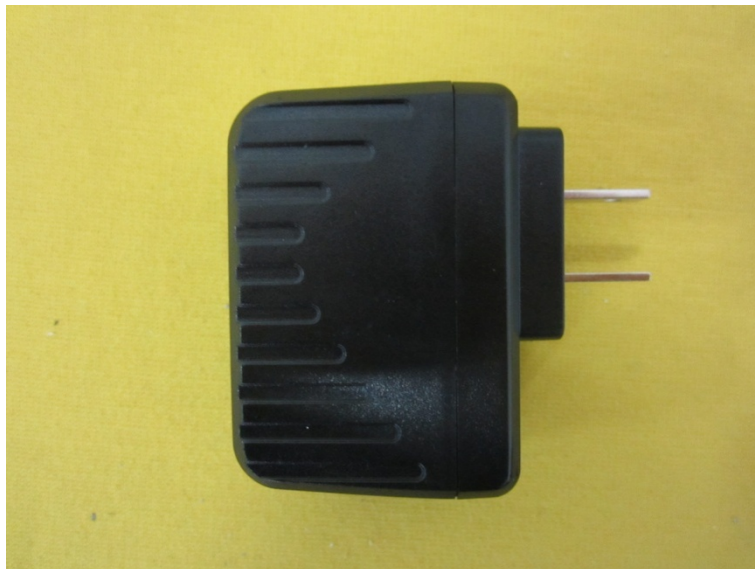
## 8. External Photos of the EUT

### External photos of the EUT





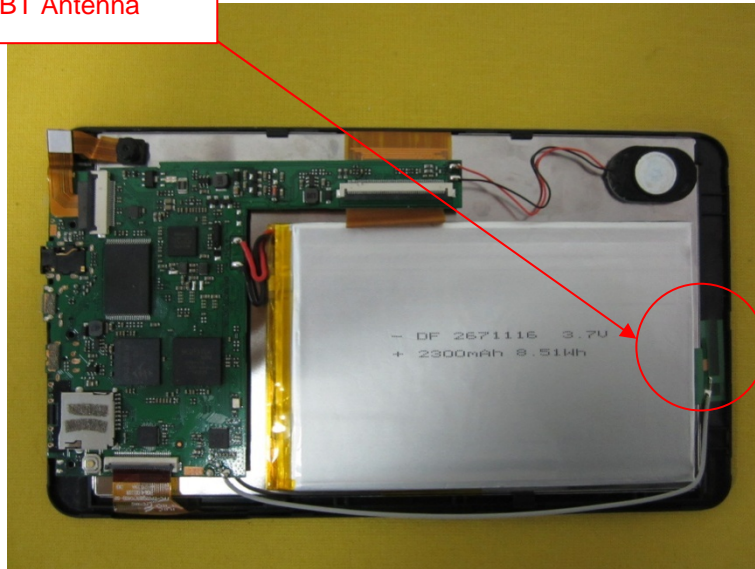


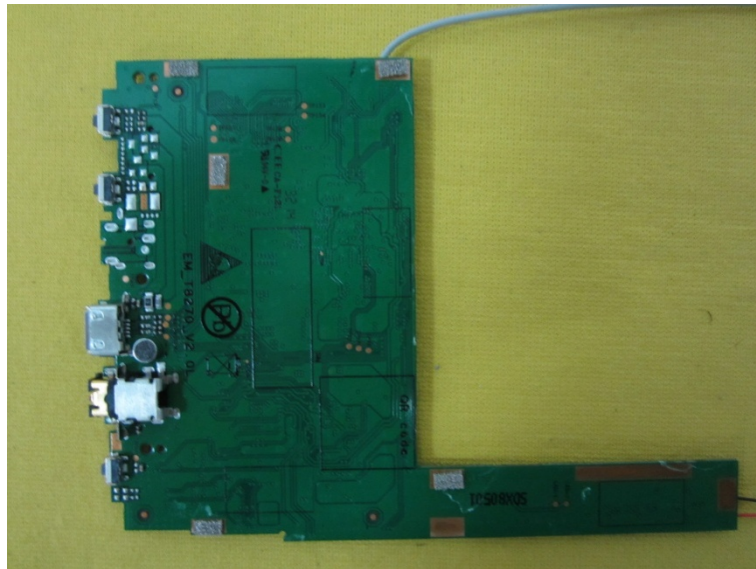
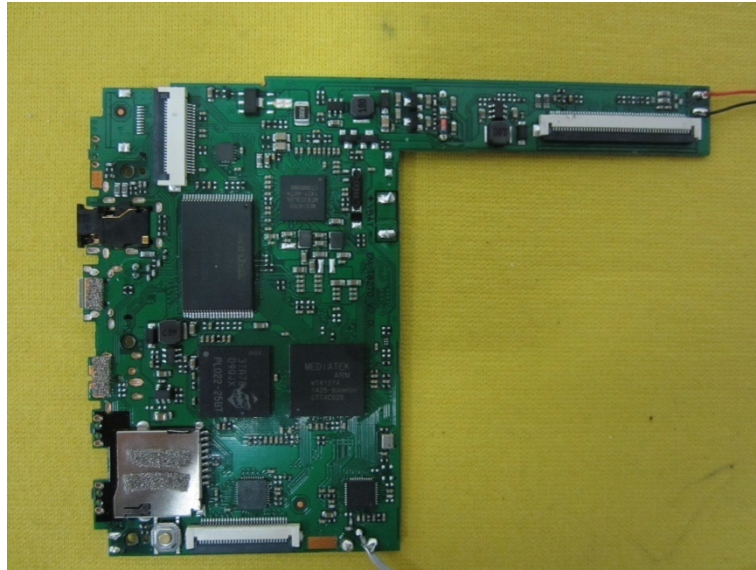


Internal photos of the EUT



WIFI/BT Antenna





.....End of Report.....