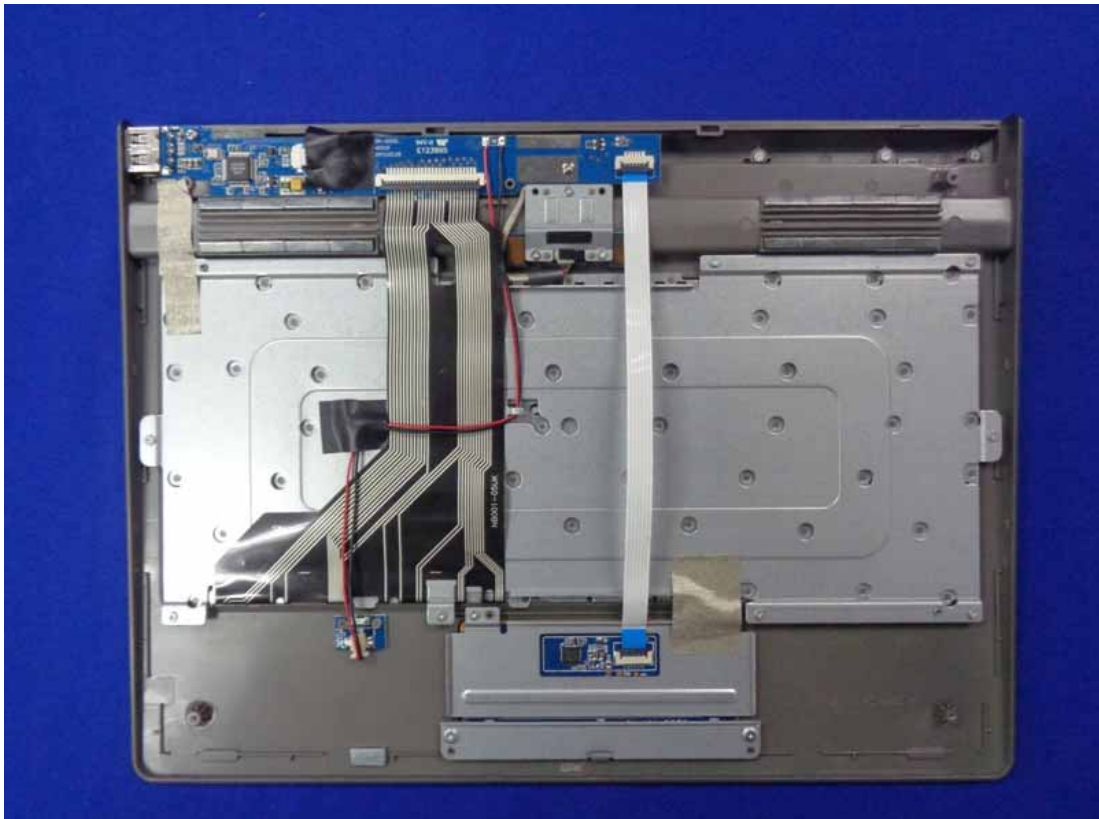


**Figure 15**  
Inside of the EUT



**Figure 16**  
Inside of the EUT



**Figure 17**  
Inside of the EUT



**Figure 18**  
Inside of the EUT



**Figure 19**  
EUT of the Panel



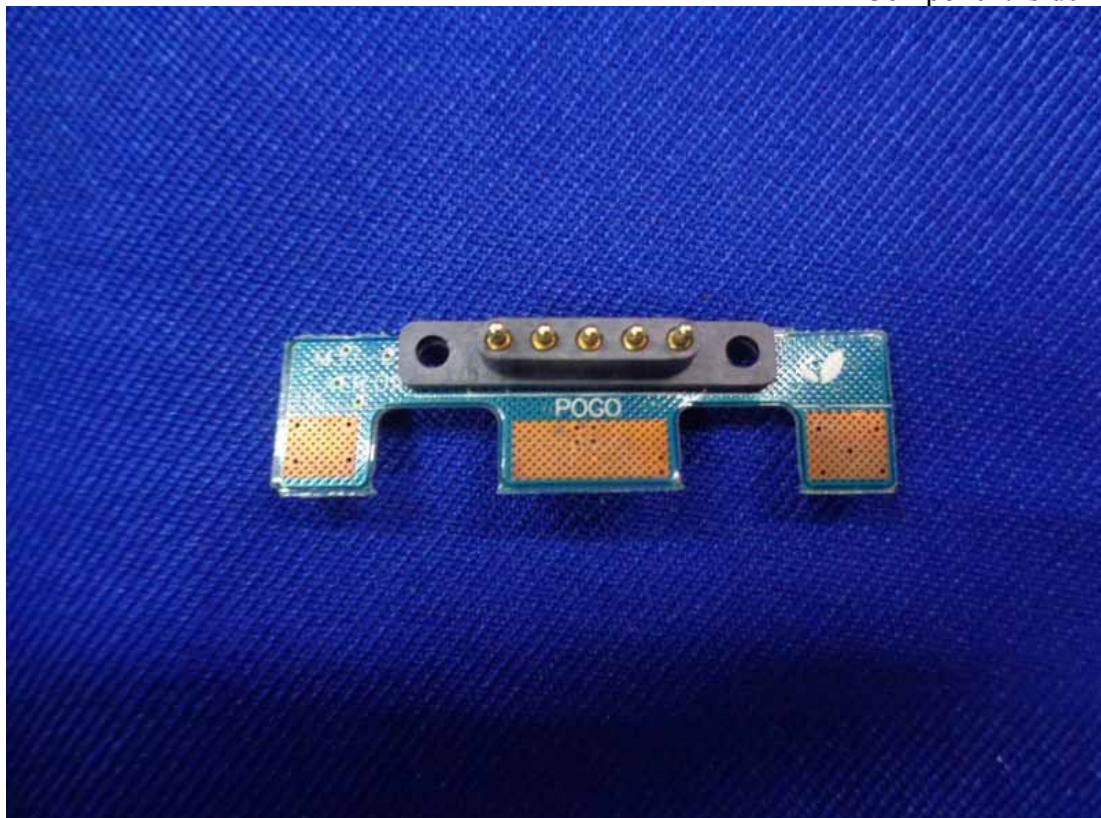
**Figure 20**  
EUT of the Panel



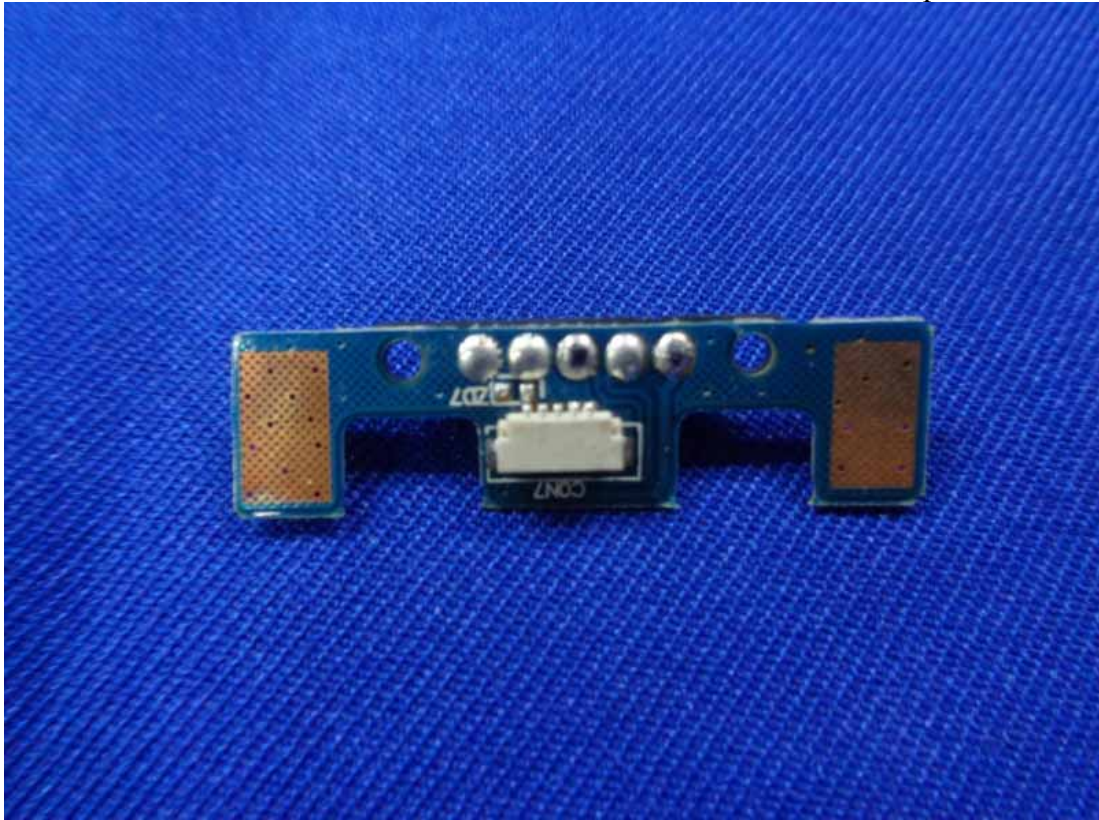
**Figure 21**  
Panel of the Label



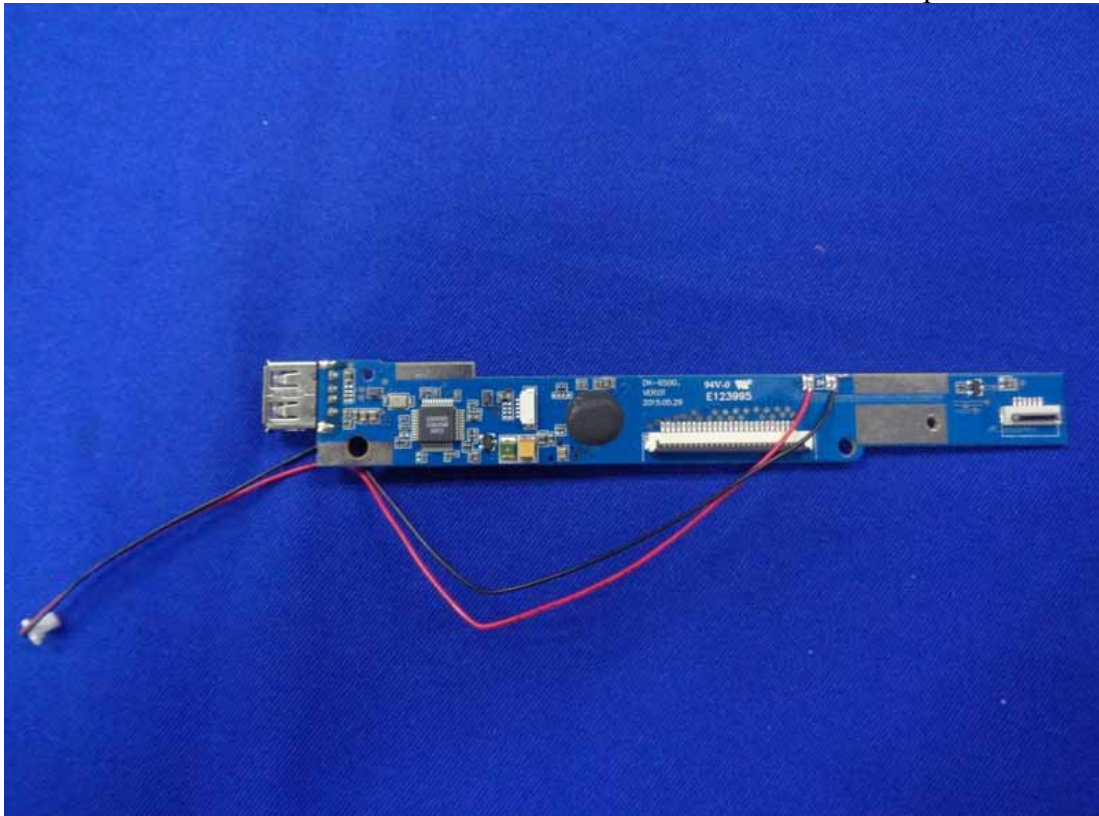
**Figure 22**  
Component side of the PCB



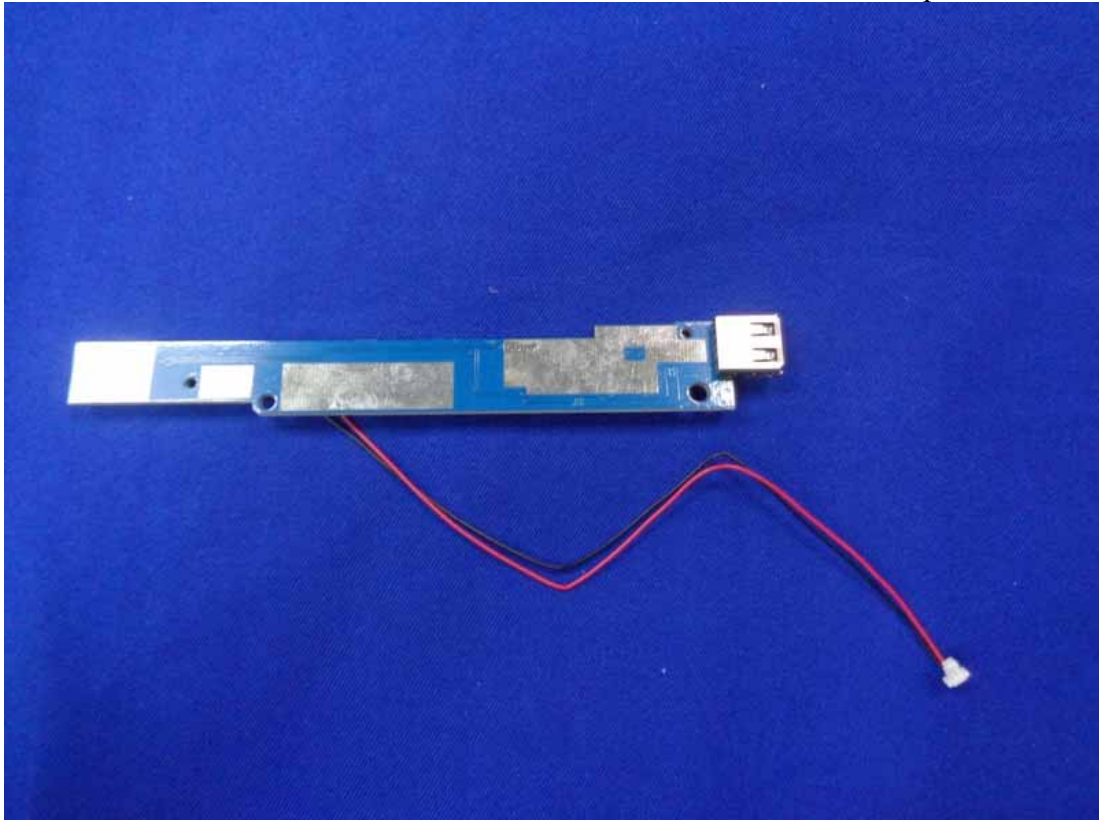
**Figure 23**  
Component side of the PCB



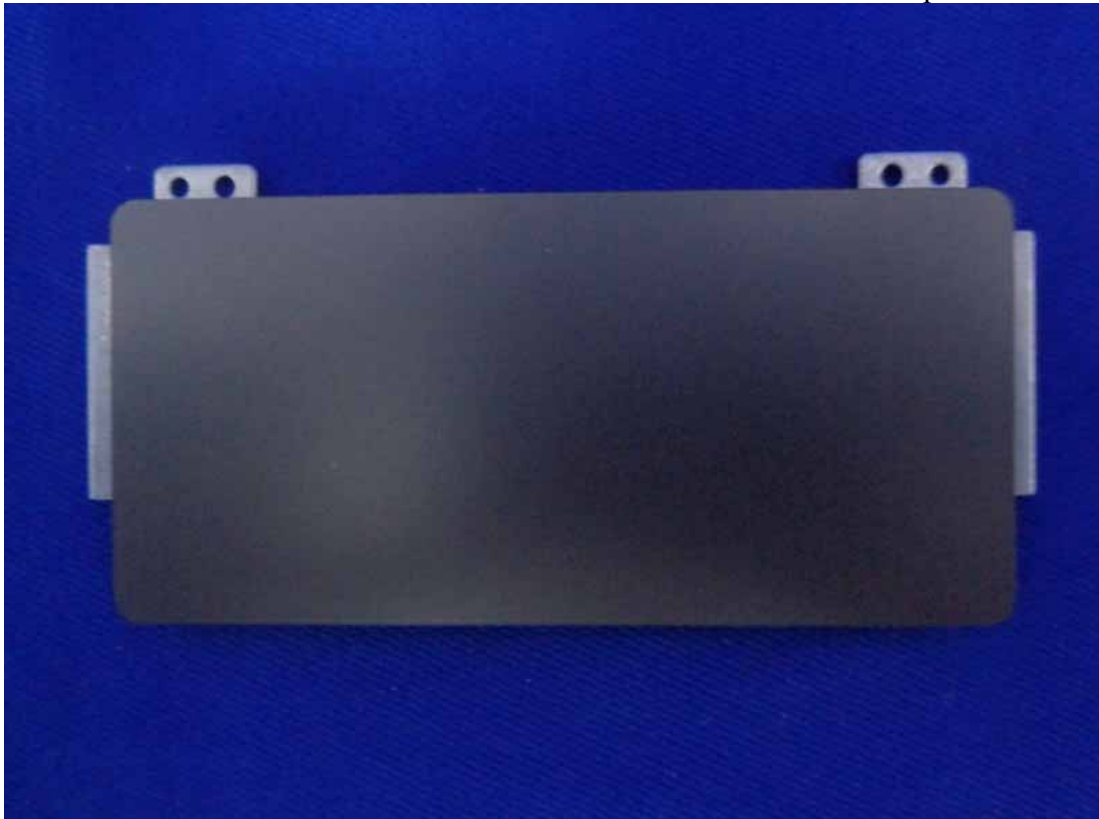
**Figure 24**  
Component side of the PCB



**Figure 25**  
Component side of the PCB



**Figure 26**  
Component side of the PCB



**Figure 27**  
Component side of the PCB



**Figure 28**  
Power Adapter #1



**Figure 29**  
Battery

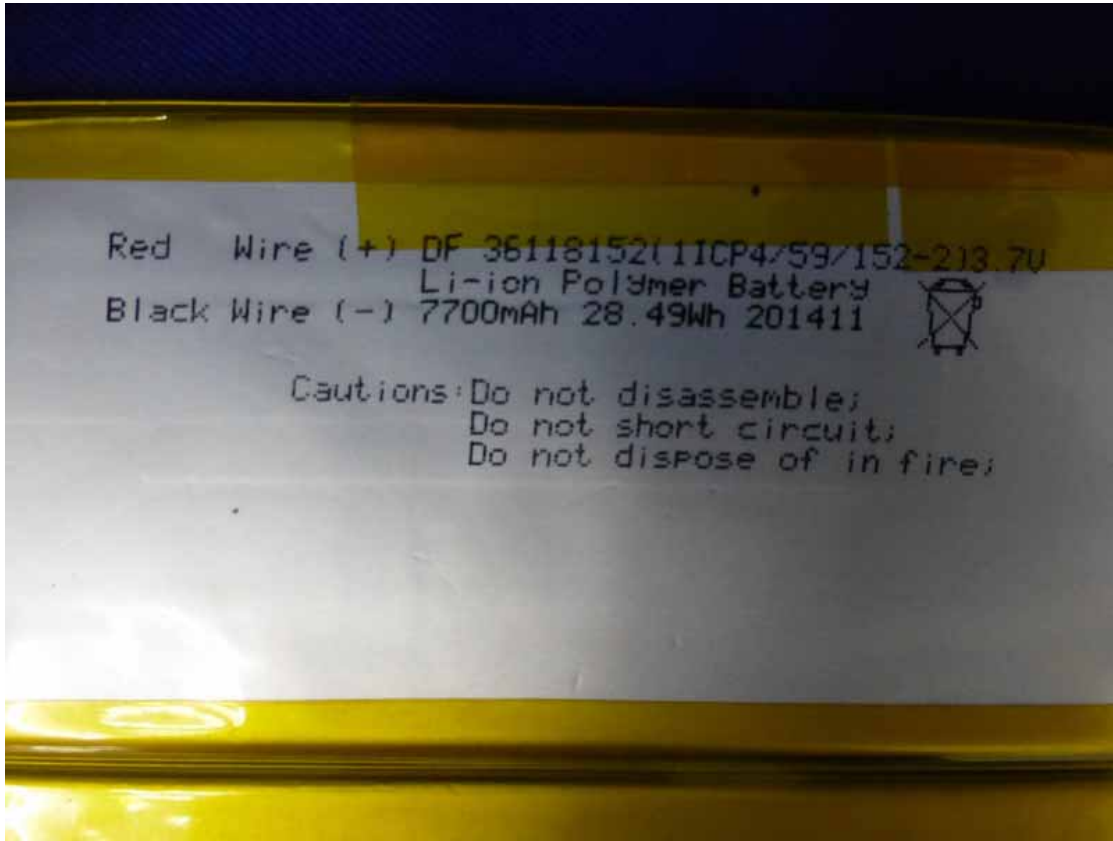


**Figure 30**  
Battery

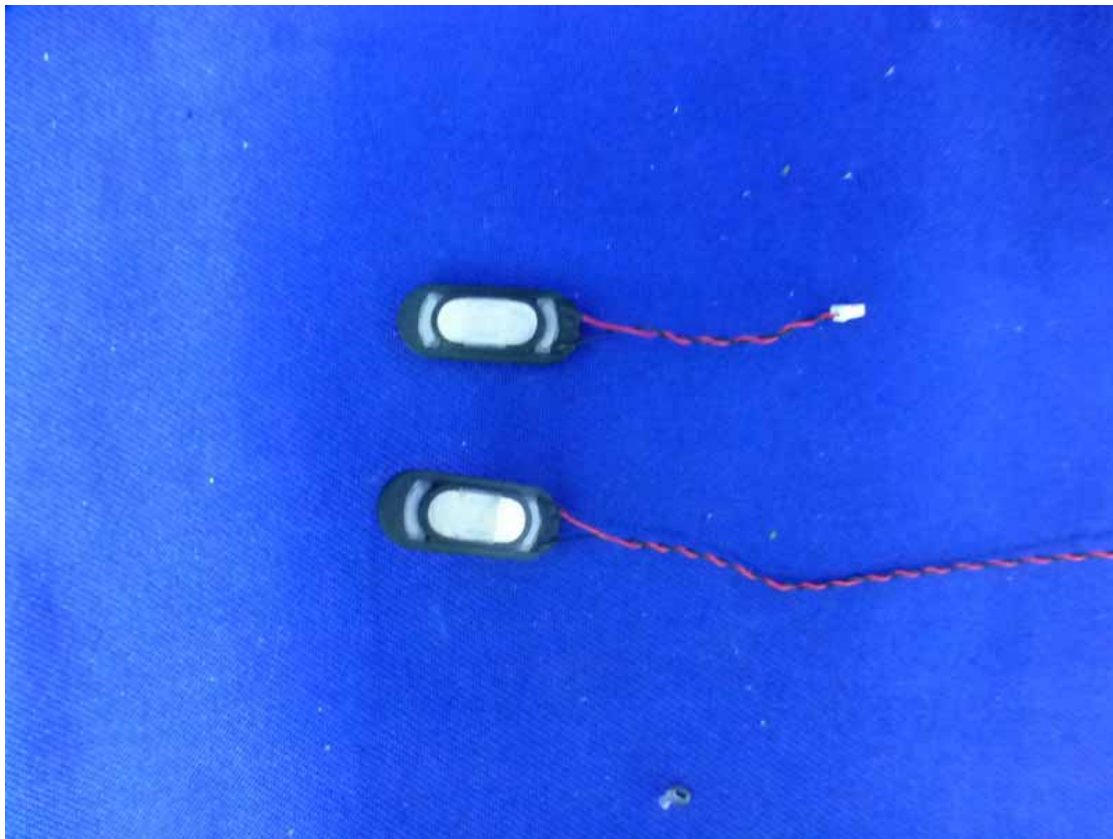




**Figure 31**  
Battery



**Figure 32**  
Speaker



**Figure 33**  
Power Adapter



**Figure 34**  
Power Adapter



**Figure 35**  
Power Adapter



**Figure 36**  
OTG Cable



**Figure 37**  
USB Cable

