



TEST REPORT

Report Reference No......: **TRE1310002803 R/C: 98688**

FCC ID.....: **2AAP6E7312**

Compiled by

(position+printed name+signature)..: File administrators Jerome Luo

Jerome Luo

Supervised by

(position+printed name+signature)..: Test Engineer Yuchao Wang

yuchao.wang

Approved by

(position+printed name+signature)..: Manager Wenliang Li

Wenliang Li

Date of issue.....: Oct 23, 2013

Representative Laboratory Name ..: **Shenzhen Huatongwei International Inspection Co., Ltd**

Address.....: No.149, Gongye 7th Road, Shekou Nanshan, Shenzhen, CHINA

Applicant's name.....: **SHENZHEN ZOWEE TECHNOLOGY CO.,LTD**

Address.....: Science & Technology Industrial Park of Privately Owned Enterprises, Pingshan, Xili, Nanshan District, Shenzhen, PR CHINA

Test specification:

Standard.....: **ANSI C95.1-1999**

47CFR § 2.1093

TRF Originator.....: Shenzhen Huatongwei International Inspection CO., Ltd

Master TRF.....: Dated 2006-06

Shenzhen Huatongwei International Inspection Co., Ltd. All rights reserved.

This publication may be reproduced in whole or in part for non-commercial purposes as long as the Shenzhen Huatongwei International Inspection Co., Ltd is acknowledged as copyright owner and source of the material. Shenzhen Huatongwei International Inspection Co., Ltd takes no responsibility for and will not assume liability for damages resulting from the reader's interpretation of the reproduced material due to its placement and context.

Test item description: Tablet PC

Trade Mark.....: Medion / Lifetab

Manufacturer.....: **SHENZHEN ZOWEE TECHNOLOGY CO.,LTD**

Model/Type reference.....: E7312

Listed Models.....: E7311, M7008R

Rating.....: DC 3.70V/DC 5.0V adapter from AC120V/60Hz

Android Version.....: Android 4.2.2

Result.....: **Positive**

TEST REPORT

Test Report No. :	TRE1310002803	Oct 23, 2013
		Date of issue

Equipment under Test : Tablet PC

Model /Type : E7312

Listed Models : E7311,M7008R

Applicant : **SHENZHEN ZOWEE TECHNOLOGY CO.,LTD**

Address : Science &Technology Industrial Park of Privately Owned Enterprises, Pingshan, Xili, Nanshan District, Shenzhen, PR CHINA

Manufacturer : **SHENZHEN ZOWEE TECHNOLOGY CO.,LTD**

Address : Science &Technology Industrial Park of Privately Owned Enterprises, Pingshan, Xili, Nanshan District, Shenzhen, PR CHINA

Test Result according to the standards on page 4:	Positive
--	-----------------

The test report merely corresponds to the test sample.
It is not permitted to copy extracts of these test result without the written permission of the test laboratory.

Contents

1.	<u>TEST STANDARDS</u>	4
2.	<u>SUMMARY</u>	5
2.1.	General Remarks	5
2.2.	Product Description	5
2.3.	Statement of Compliance	5
2.4.	Equipment under Test	5
2.5.	Short description of the Equipment under Test (EUT)	6
2.6.	EUT configuration	6
2.7.	Note	6
3.	<u>TEST ENVIRONMENT</u>	7
3.1.	Address of the test laboratory	7
3.2.	Test Facility	7
3.3.	Environmental conditions	8
3.4.	SAR Limits	8
3.5.	Equipments Used during the Test	8
4.	<u>SAR MEASUREMENTS SYSTEM CONFIGURATION</u>	9
4.1.	SAR Measurement Set-up	9
4.2.	DASY5 E-field Probe System	10
4.3.	Phantoms	11
4.4.	Device Holder	11
4.5.	Scanning Procedure	11
4.6.	Data Storage and Evaluation	12
4.7.	Tissue Dielectric Parameters for Head and Body Phantoms	14
4.8.	Tissue equivalent liquid properties	14
4.9.	System Check	15
4.10.	SAR measurement procedure	16
5.	<u>TEST CONDITIONS AND RESULTS</u>	20
5.1.	Conducted Power Results	20
5.2.	Simultaneous TX SAR Considerations	21
5.3.	SAR Measurement Results	23
5.4.	SAR Measurement Variability	24
5.5.	Measurement Uncertainty (300MHz-3GHz)	25
5.6.	System Check Results	27
5.7.	SAR Test Graph Results	28
5.8.	SAR Measurement Variability	34
6.	<u>CALIBRATION CERTIFICATE</u>	37
6.1.	Probe Calibration Certificate	37
6.2.	D2450V2 Dipole Calibration Certificate	48
6.3.	DAE4 Calibration Certificate	56
7.	<u>TEST SETUP PHOTOS</u>	61
8.	<u>EXTERNAL PHOTOS OF THE EUT</u>	63

1. TEST STANDARDS

The tests were performed according to following standards:

[IEEE Std C95.1, 1999](#): IEEE Standard for Safety Levels with Respect to Human Exposure to Radio Frequency Electromagnetic Fields, 3 KHz to 300 GHz. It specifies the maximum exposure limit of 1.6 W/kg as averaged over any 1 gram of tissue for portable devices being used within 20 cm of the user in the uncontrolled environment.

[IEEE Std 1528™-2003](#): IEEE Recommended Practice for Determining the Peak Spatial-Average Specific Absorption Rate (SAR) in the Human Head from Wireless Communications Devices: Measurement Techniques.

[KDB 447498 D01 Mobile Portable RF Exposure v05r01](#): Mobile and Portable Device RF Exposure Procedures and Equipment Authorization Policies

[KDB 616217 D04 SAR for laptop and tablets v01](#): SAR Evaluation Considerations for Laptop, Notebook, Netbook and Tablet Computers

[KDB865664 D01 SAR measurement 100 MHz to 6 GHz v01](#): SAR Measurement Requirements for 100 MHz to 6 GHz

[KDB865664 D02 SAR Reporting v01](#): RF Exposure Compliance Reporting and Documentation Considerations

[KDB248227](#): SAR measurement procedures for 802.112abg transmitters

[FCC Part 2.1093 Radiofrequency Radiation Exposure Evaluation](#): Portable Devices

[KDB 616217 D04 SAR for laptop and Internet Tablets v01](#): SAR Evaluation Considerations for Laptop, Notebook, Netbook and Internet Tablet Computers

2. SUMMARY

2.1. General Remarks

Date of receipt of test sample	:	Oct 22, 2013
Testing commenced on	:	Oct 22, 2013
Testing concluded on	:	Oct 23,2013

2.2. Product Description

The **SHENZHEN ZOWEE TECHNOLOGY CO.,LTD** 's Model: E7312 or the "EUT" as referred to in this report; more general information as follows, for more details, refer to the user's manual of the EUT.

Name of EUT	Tablet PC
Model Number	E7312, E7311, M7008R
FCC ID	2AAP6E7312
WLAN	Supported 802.11b/802.11g/802.11n
Bluetooth	Supported BT2.1+EDR
Antenna Type	Internal
WLAN FCC Operation frequency	IEEE 802.11b: 2412MHz—2462MHz IEEE 802.11g: 2412MHz—2462MHz IEEE 802.11n HT20: 2412MHz—2462MHz
Bluetooth FCC Operation frequency	2402MHz-2480MHz
WLAN Modulation	IEEE 802.11b: DSSS(CCK,DQPSK,DBPSK) IEEE 802.11g: OFDM(64QAM, 16QAM, QPSK, BPSK) IEEE 802.11n HT20: OFDM (64QAM, 16QAM, QPSK,BPSK)
Bluetooth Modulation	GFSK,8DPSK, π /4DQPSK
Hardware version	TVE733S V1.
Android Version	Android 4.2.2

2.3. Statement of Compliance

The maximum of results of SAR found during testing for E7312 are follows:

Exposure Configuration	Technolohy Band	Highest Reported SAR 1g(W/Kg)	Equipment Class
Body-worn (Separation Distance 0mm)	WLAN2450	1.266	DTS

The SAR values found for theTable PC are below the maximum recommended levels of 1.6W/Kg as averaged over any 1g tissue accordintg to the ANSI C95.1-1999.

For body worn operation,this devices has been tested and meets FCC RF exposure guidelines when used with any accessory that conrtains no metal and which provides a minimum separation distance of 10mm between this devices and the body of the user.User of other accessories may not ensure compliance with FCC RF exposure guidelines.

The EUT battery must be fully charged and checked periodically during the test to ascertain iniform power output.

The highest reported SAR values is obtained at the case of,and the values are:**1.266W/Kg(1g)**.

2.4. Equipment under Test

Power supply system utilised

Power supply voltage	:	<input type="radio"/> 120V / 60 Hz	<input type="radio"/> 115V / 60Hz
		<input type="radio"/> 12 V DC	<input type="radio"/> 24 V DC
		<input checked="" type="radio"/> Other (specified in blank below)	

DC 3.70 V/DC 5.0V Adapter from AC 120V/60Hz

2.5. Short description of the Equipment under Test (EUT)

Mobile phone (Model: E7312).

The EUT battery must be fully charged and checked periodically during the test to ascertain maximum power output.

2.6. EUT configuration

The following peripheral devices and interface cables were connected during the measurement:

● - supplied by the manufacturer

○ - supplied by the lab

<input type="radio"/>	Power Cable	Length (m) :	/
		Shield :	/
		Detachable :	/
<input type="radio"/>	Multimeter	Manufacturer :	/
		Model No. :	/

Battery information :

Model:E7312

Manufacturer: Shenzhen M.batt electronics co.,ltd

Capacitance:3000mAh

Nominal Voltage:3.70V

Adapter information:

Model: KSAPK0110500200HU

Input: 100-240V~50/60Hz 0.5A

Output: OUTPUT: 5.0V DC 2.0A

Power Cable: 100cm With Core

Shielded Unshielded

2.7. Note

1. The EUT is a Tablet PC with WLAN and Bluetooth fuction,The functions of the EUT listed as below:

	Test Standards	Reference Report
WLAN	FCC Part 15 C 15.247	TRE1310002801
Bluetooth	FCC Part 15 C 15.247	TRE1310002802
SAR	FCC Part 2 §2.1093	TRE1310002803

3 . TEST ENVIRONMENT

3.1. Address of the test laboratory

Shenzhen Huatongwei International Inspection Co., Ltd
Keji Nan No.12 Road, Hi-tech Park, Shenzhen, China
Phone: 86-755-26715686 Fax: 86-755-26748089

The sites are constructed in conformance with the requirements of ANSI C63.7, ANSI C63.4 (2009) and CISPR Publication 22.

3.2. Test Facility

The test facility is recognized, certified, or accredited by the following organizations:

CNAS-Lab Code: L1225

Shenzhen Huatongwei International Inspection Co., Ltd. has been assessed and proved to be in compliance with CNAS-CL01 Accreditation Criteria for Testing and Calibration Laboratories (identical to ISO/IEC 17025: 2005 General Requirements) for the Competence of Testing and Calibration Laboratories, Date of Registration: Mar. 29, 2012. Valid time is until Feb. 28, 2015.

A2LA-Lab Cert. No. 2243.01

Shenzhen Huatongwei International Inspection Co., Ltd. EMC Laboratory has been accredited by A2LA for technical competence in the field of electrical testing, and proved to be in compliance with ISO/IEC 17025: 2005 General Requirements for the Competence of Testing and Calibration Laboratories and any additional program requirements in the identified field of testing. Valid time is until Sept. 30, 2015.

FCC-Registration No.: 662850

Shenzhen Huatongwei International Inspection Co., Ltd. EMC Laboratory has been registered and fully described in a report filed with the FCC (Federal Communications Commission). The acceptance letter from the FCC is maintained in our files. Registration 662850, Renewal date June. 01, 2012, valid time is until June. 01, 2015.

IC-Registration No.: 5377A

The 3m Alternate Test Site of Shenzhen Huatongwei International Inspection Co., Ltd. has been registered by Certification and Engineering Bureau of Industry Canada for the performance of radiated measurements with Registration No. 5377A on Jan. 25, 2011, valid time is until Jan. 24, 2014.

ACA

Shenzhen Huatongwei International Inspection Co., Ltd. EMC Laboratory can also perform testing for the Australian C-Tick mark as a result of our A2LA accreditation.

VCCI

The 3m Semi-anechoic chamber (12.2m×7.95m×6.7m) and Shielded Room (8m×4m×3m) of Shenzhen Huatongwei International Inspection Co., Ltd. has been registered in accordance with the Regulations for Voluntary Control Measures with Registration No.: G-292. Date of Registration: Dec. 24, 2010. Valid time is until Dec. 23, 2013.

Main Ports Conducted Interference Measurement of Shenzhen Huatongwei International Inspection Co., Ltd. has been registered in accordance with the Regulations for Voluntary Control Measures with Registration No.: C-2726. Date of Registration: Dec. 20, 2012. Valid time is until Dec. 19, 2015.

Telecommunication Ports Conducted Interference Measurement of Shenzhen Huatongwei International Inspection Co., Ltd. has been registered in accordance with the Regulations for Voluntary Control Measures with Registration No.: T-1837. Date of Registration: May 07, 2013. Valid time is until May 06, 2016.

DNV

Shenzhen Huatongwei International Inspection Co., Ltd. has been found to comply with the requirements of DNV towards subcontractor of EMC and safety testing services in conjunction with the EMC and Low voltage Directives and in the voluntary field. The acceptance is based on a formal quality Audit and follow-ups

according to relevant parts of ISO/IEC Guide 17025 (2005), in accordance with the requirements of the DNV Laboratory Quality Manual towards subcontractors. Valid time is until Aug. 24, 2016.

3.3. Environmental conditions

During the measurement the environmental conditions were within the listed ranges:

Temperature:	18-25 ° C
Humidity:	40-65 %
Atmospheric pressure:	950-1050mbar

3.4. SAR Limits

FCC Limit (1g Tissue)

EXPOSURE LIMITS	SAR (W/kg)	
	(General Population / Uncontrolled Exposure Environment)	(Occupational / Controlled Exposure Environment)
Spatial Average (averaged over the whole body)	0.08	0.4
Spatial Peak (averaged over any 1 g of tissue)	1.60	8.0
Spatial Peak (hands/wrists/feet/ankles averaged over 10 g)	4.0	20.0

Population/Uncontrolled Environments are defined as locations where there is the exposure of individual who have no knowledge or control of their exposure.

Occupational/Controlled Environments are defined as locations where there is exposure that may be incurred by people who are aware of the potential for exposure (i.e. as a result of employment or occupation).

3.5. Equipments Used during the Test

Test Equipment	Manufacturer	Type/Model	Serial Number	Calibration	
				Last Calibration	Calibration Interval
Data Acquisition Electronics DAEx	SPEAG	DAE4	1315	2013/2/27	1
E-field Probe	SPEAG	ES3DV3	3292	2013/2/24	1
System Validation Dipole 2450V2	SPEAG	D2450V2	884	2013/2/29	1
Network analyzer	Agilent	8753E	US37390562	2013/3/25	1
Dielectric Probe Kit	Agilent	85070E	US44020288	/	/
Power meter	Agilent	E4417A	GB41292254	2013/03/26	1
Power sensor	Agilent	8481H	MY41095360	2013/03/26	1
Signal generator	IFR	2032	203002/100	2012/10/27	1
Amplifier	AR	75A250	302205	2012/10/27	1

4.2. DASY5 E-field Probe System

The SAR measurements were conducted with the dosimetric probe ES3DV3 (manufactured by SPEAG), designed in the classical triangular configuration and optimized for dosimetric evaluation.

Probe Specification

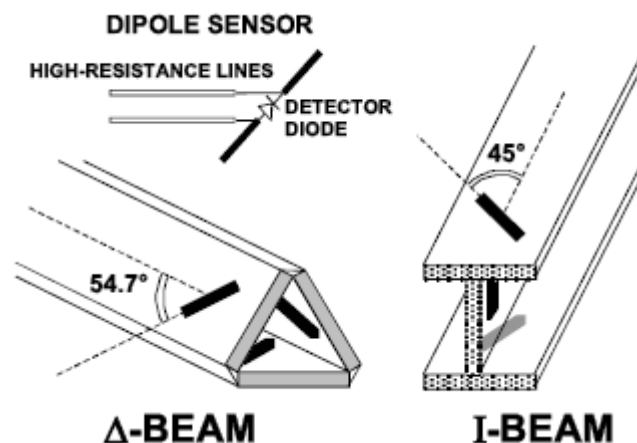
Construction	Symmetrical design with triangular core Interleaved sensors Built-in shielding against static charges PEEK enclosure material (resistant to organic solvents, e.g., DGBE)
Calibration	ISO/IEC 17025 calibration service available.
Frequency	10 MHz to 4 GHz; Linearity: ± 0.2 dB (30 MHz to 4 GHz)
Directivity	± 0.2 dB in HSL (rotation around probe axis) ± 0.3 dB in tissue material (rotation normal to probe axis)
Dynamic Range	$5 \mu\text{W/g}$ to $> 100 \text{ mW/g}$; Linearity: ± 0.2 dB
Dimensions	Overall length: 337 mm (Tip: 20 mm) Tip diameter: 3.9 mm (Body: 12 mm) Distance from probe tip to dipole centers: 2.0 mm
Application	General dosimetry up to 4 GHz Dosimetry in strong gradient fields Compliance tests of mobile phones
Compatibility	DASY3, DASY4, DASY52 SAR and higher, EASY4/MRI



Isotropic E-Field Probe

The isotropic E-Field probe has been fully calibrated and assessed for isotropicity, and boundary effect within a controlled environment. Depending on the frequency for which the probe is calibrated the method utilized for calibration will change.

The E-Field probe utilizes a triangular sensor arrangement as detailed in the diagram below:



4.3. Phantoms

The phantom used for all tests i.e. for both system checks and device testing, was the twin-headed "SAM Phantom", manufactured by SPEAG. The SAM twin phantom is a fiberglass shell phantom with 2mm shell thickness (except the ear region, where shell thickness increases to 6mm). System checking was performed using the flat section, whilst Head SAR tests used the left and right head profile sections. Body SAR testing also used the flat section between the head profiles.



SAM Twin Phantom

4.4. Device Holder

The device was placed in the device holder (illustrated below) that is supplied by SPEAG as an integral part of the DASY system.

The DASY device holder is designed to cope with the different positions given in the standard. It has two scales for device rotation (with respect to the body axis) and device inclination (with respect to the line between the ear reference points). The rotation centers for both scales is the ear reference point (ERP). Thus the device needs no repositioning when changing the angles.



Device holder supplied by SPEAG

4.5. Scanning Procedure

The DASY5 installation includes predefined files with recommended procedures for measurements and validation. They are read-only document files and destined as fully defined but unmeasured masks. All test positions (head or body-worn) are tested with the same configuration of test steps differing only in the grid definition for the different test positions.

The “reference” and “drift” measurements are located at the beginning and end of the batch process. They measure the field drift at one single point in the liquid over the complete procedure. The indicated drift is mainly the variation of the DUT’s output power and should vary max. $\pm 5\%$.

The “surface check” measurement tests the optical surface detection system of the DASY5 system by repeatedly detecting the surface with the optical and mechanical surface detector and comparing the results. The output gives the detecting heights of both systems, the difference between the two systems and the standard deviation of the detection repeatability. Air bubbles or refraction in the liquid due to separation of the sugar-water mixture gives poor repeatability (above $\pm 0.1\text{mm}$). To prevent wrong results tests are only executed when the liquid is free of air bubbles. The difference between the optical surface detection and the actual surface depends on the probe and is specified with each probe (It does not depend on the surface reflectivity or the probe angle to the surface within $\pm 30^\circ$.)

Area Scan

The Area Scan is used as a fast scan in two dimensions to find the area of high field values before running a detailed measurement around the hot spot. Before starting the area scan a grid spacing of 15 mm x 15 mm is set. During the scan the distance of the probe to the phantom remains unchanged. After finishing area scan, the field maxima within a range of 2 dB will be ascertained.

Zoom Scan

Zoom Scans are used to estimate the peak spatial SAR values within a cubic averaging volume containing 1 g and 10 g of simulated tissue. The default Zoom Scan is done by 7x7x7 points within a cube whose base is centered around the maxima found in the preceding area scan.

Spatial Peak Detection

The procedure for spatial peak SAR evaluation has been implemented and can determine values of masses of 1g and 10g, as well as for user-specific masses. The DASY5 system allows evaluations that combine measured data and robot positions, such as: • maximum search • extrapolation • boundary correction • peak search for averaged SAR. During a maximum search, global and local maxima searches are automatically performed in 2-D after each Area Scan measurement with at least 6 measurement points. It is based on the evaluation of the local SAR gradient calculated by the Quadratic Shepard’s method. The algorithm will find the global maximum and all local maxima within -2 dB of the global maxima for all SAR distributions.

Extrapolation routines are used to obtain SAR values between the lowest measurement points and the inner phantom surface. The extrapolation distance is determined by the surface detection distance and the probe sensor offset. Several measurements at different distances are necessary for the extrapolation. Extrapolation routines require at least 10 measurement points in 3-D space. They are used in the Zoom Scan to obtain SAR values between the lowest measurement points and the inner phantom surface. The routine uses the modified Quadratic Shepard’s method for extrapolation. For a grid using 7x7x7 measurement points with 5mm resolution amounting to 343 measurement points, the uncertainty of the extrapolation routines is less than 1% for 1g and 10g cubes.

A Z-axis scan measures the total SAR value at the x-and y-position of the maximum SAR value found during the cube 7x7x7 scan. The probe is moved away in z-direction from the bottom of the SAM phantom in 5mm steps.

4.6. Data Storage and Evaluation

Data Storage

The DASY5 software stores the acquired data from the data acquisition electronics as raw data (in microvolt readings from the probe sensors), together with all necessary software parameters for the data evaluation (probe calibration data, liquid parameters and device frequency and modulation data) in measurement files with the extension “.DA4”. The software evaluates the desired unit and format for output each time the data is visualized or exported. This allows verification of the complete software setup even after the measurement and allows correction of incorrect parameter settings. For example, if a measurement has been performed with a wrong crest factor parameter in the device setup, the parameter can be corrected afterwards and the data can be re-evaluated.

The measured data can be visualized or exported in different units or formats, depending on the selected probe type ([V/m], [A/m], [°C], [mW/g], [mW/cm²], [dBrel], etc.). Some of these units are not available in certain

situations or show meaningless results, e.g., a SAR output in a lossless media will always be zero. Raw data can also be exported to perform the evaluation with other software packages.

Data Evaluation

The SEMCAD software automatically executes the following procedures to calculate the field units from the microvolt readings at the probe connector. The parameters used in the evaluation are stored in the configuration modules of the software:

Probe parameters:	- Sensitivity	Normi, ai0, ai1, ai2
	- Conversion factor	ConvFi
	- Diode compression point	Dcpi
Device parameters:	- Frequency	f
	- Crest factor	cf
Media parameters:	- Conductivity	σ
	- Density	ρ

These parameters must be set correctly in the software. They can be found in the component documents or they can be imported into the software from the configuration files issued for the DASY5 components. In the direct measuring mode of the multimeter option, the parameters of the actual system setup are used. In the scan visualization and export modes, the parameters stored in the corresponding document files are used.

The first step of the evaluation is a linearization of the filtered input signal to account for the compression characteristics of the detector diode. The compensation depends on the input signal, the diode type and the DC-transmission factor from the diode to the evaluation electronics. If the exciting field is pulsed, the crest factor of the signal must be known to correctly compensate for peak power. The formula for each channel can be given as:

$$V_i = U_i + U_i^2 \cdot \frac{cf}{dcp_i}$$

With	V_i	= compensated signal of channel i	(i = x, y, z)
	U_i	= input signal of channel i	(i = x, y, z)
	cf	= crest factor of exciting field	(DASY parameter)
	dcp _i	= diode compression point	(DASY parameter)

From the compensated input signals the primary field data for each channel can be evaluated:

$$E - \text{fieldprobes} : \quad E_i = \sqrt{\frac{V_i}{Norm_i \cdot ConvF}}$$

$$H - \text{fieldprobes} : \quad H_i = \sqrt{V_i} \cdot \frac{a_{i0} + a_{i1}f + a_{i2}f^2}{f}$$

With	V_i	= compensated signal of channel i	(i = x, y, z)
	Norm _i	= sensor sensitivity of channel i	(i = x, y, z)
		[mV/(V/m) ²] for E-field Probes	
	ConvF	= sensitivity enhancement in solution	
	a _{ij}	= sensor sensitivity factors for H-field probes	
	f	= carrier frequency [GHz]	
	E_i	= electric field strength of channel i in V/m	
	H_i	= magnetic field strength of channel i in A/m	

The RSS value of the field components gives the total field strength (Hermitian magnitude):

$$E_{tot} = \sqrt{E_x^2 + E_y^2 + E_z^2}$$

The primary field data are used to calculate the derived field units.

$$SAR = E_{tot}^2 \cdot \frac{\sigma}{\rho \cdot 1'000}$$

with	SAR	= local specific absorption rate in mW/g
	E_{tot}	= total field strength in V/m
	σ	= conductivity in [mho/m] or [Siemens/m]
	ρ	= equivalent tissue density in g/cm ³

Note that the density is normally set to 1 (or 1.06), to account for actual brain density rather than the density of the simulation liquid.

4.7. Tissue Dielectric Parameters for Head and Body Phantoms

The liquid is consisted of water,salt,Glycol,Sugar,Preventol and Cellulose.The liquid has previously been proven to be suited for worst-case.The table 3 and table 4 show the detail solition.It's satisfying the latest tissue dielectric parameters requirements proposed by the KDB865664.

Table 3:Composition of the Head Tissue Equivalent Matter

MIXTURE%	FREQUENCY(Brain) 835MHz
Water	41.45
Sugar	56
Salt	1.45
Preventol	0.12
Cellulose	1.0
Dielectric Paramters Target Value	f=835MHz $\epsilon=41.50$ $\sigma=0.9$

MIXTURE%	FREQUENCY(Brain) 1750MHz
Water	55.24
Glycol	44.45
Salt	0.31
Dielectric Paramters Target Value	f=1750MHz $\epsilon=40.10$ $\sigma=1.37$

MIXTURE%	FREQUENCY(Brain) 1900MHz
Water	55.242
Glycol monobutyl	44.452
Salt	0.306
Dielectric Paramters Target Value	f=1900MHz $\epsilon=40.00$ $\sigma=1.40$

MIXTURE%	FREQUENCY(Brain) 2450MHz
Water	62.70
Glycol	36.80
Salt	0.50
Dielectric Paramters Target Value	f=2450MHz $\epsilon=39.20$ $\sigma=1.80$

Table 4:Composition of the Body Tissue Equivalent Matter

MIXTURE%	FREQUENCY(Brain) 835MHz
Water	52.50
Sugar	45
Salt	1.40
Preventol	0.10
Cellulose	1.00
Dielectric Paramters Target Value	f=835MHz $\epsilon=55.20$ $\sigma=0.97$

MIXTURE%	FREQUENCY(Brain) 1750MHz
Water	69.61
Glycol	29.97
Salt	0.12
Dielectric Paramters Target Value	f=1750MHz $\epsilon=53.40$ $\sigma=1.49$

MIXTURE%	FREQUENCY(Brain) 1900MHz
Water	69.91
Glycol monobutyl	29.96
Salt	0.13
Dielectric Paramters Target Value	f=1900MHz $\epsilon=53.30$ $\sigma=1.52$

MIXTURE%	FREQUENCY(Brain) 2450MHz
Water	73.20
Glycol	26.70
Salt	0.10
Dielectric Paramters Target Value	f=2450MHz $\epsilon=52.70$ $\sigma=1.95$

4.8. Tissue equivalent liquid properties

Dielectric performance of Body tissue simulating liquid

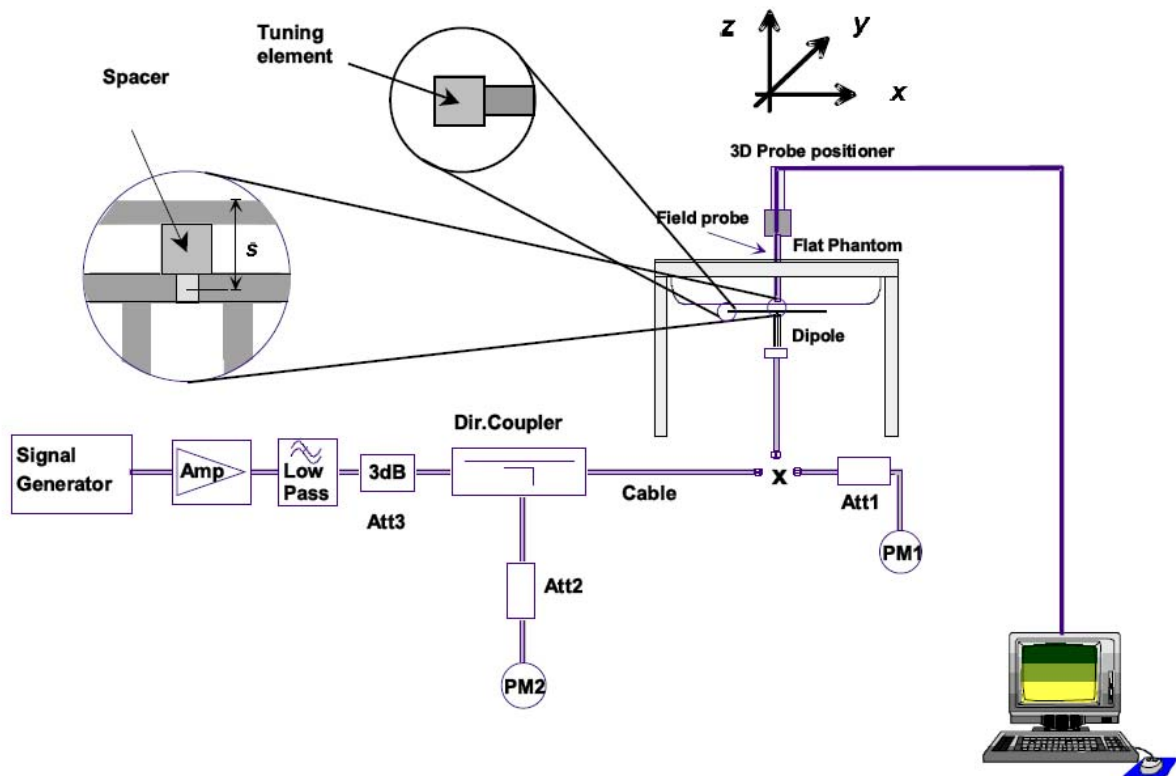
Frequency	Description	Dielectric parameters	
		ϵ_r	σ
2450MHz(Body)	Target Value $\pm 5\%$	52.7 (50.1~55.3)	1.95 (1.85~2.05)
	Measurement Value 2013-10-23	53.7	1.99

4.9. System Check

The purpose of the system check is to verify that the system operates within its specifications at the device test frequency. The system check is simple check of repeatability to make sure that the system works correctly at the time of the compliance test;

System check results have to be equal or near the values determined during dipole calibration with the relevant liquids and test system ($\pm 10\%$).

System check is performed regularly on all frequency bands where tests are performed with the DASY5 system.



The output power on dipole port must be calibrated to 24 dBm (250mW) before dipole is connected.

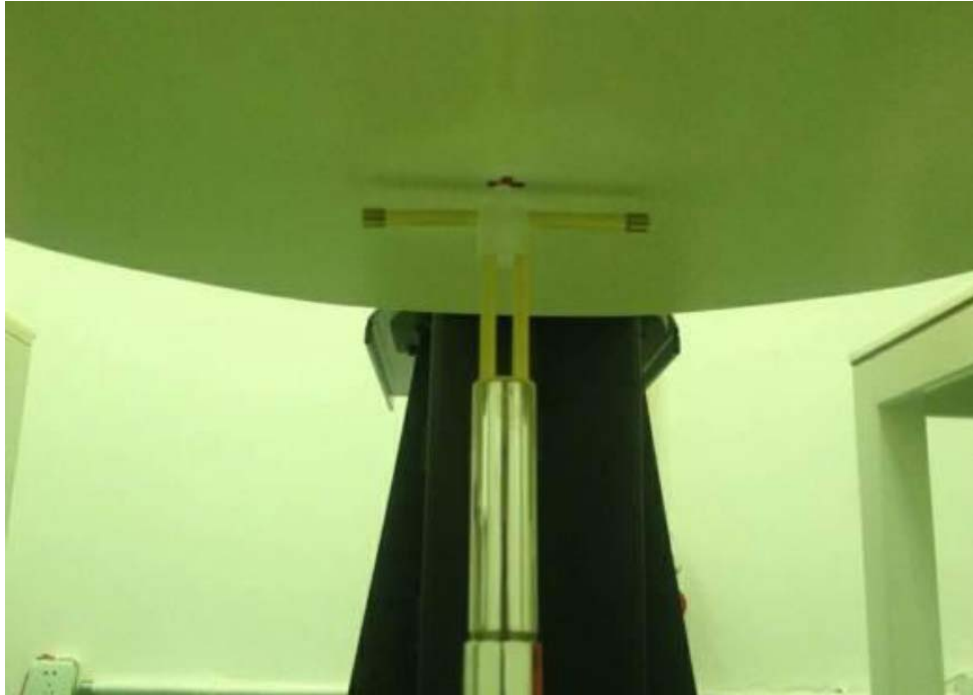


Photo of Dipole Setup

System Validation of Body

Measurement is made at temperature 22.0 °C and relative humidity 55%.							
Measurement Date: 2450MHz Oct 23 th , 2013							
Verification results	Frequency (MHz)	Target value (W/kg)		Measured value (W/kg)		Deviation	
		10 g Average	1 g Average	10 g Average	1 g Average	10 g Average	1 g Average
	2450	5.98	12.80	6.10	12.83	2.01%	0.23%

4.10. SAR measurement procedure

4.10.1 Tests to be performed

In order to determine the highest value of the peak spatial-average SAR of a handset, all device positions, configurations and operational modes shall be tested for each frequency band according to steps 1 to 3 below. A flowchart of the test process is shown in Picture 11.1.

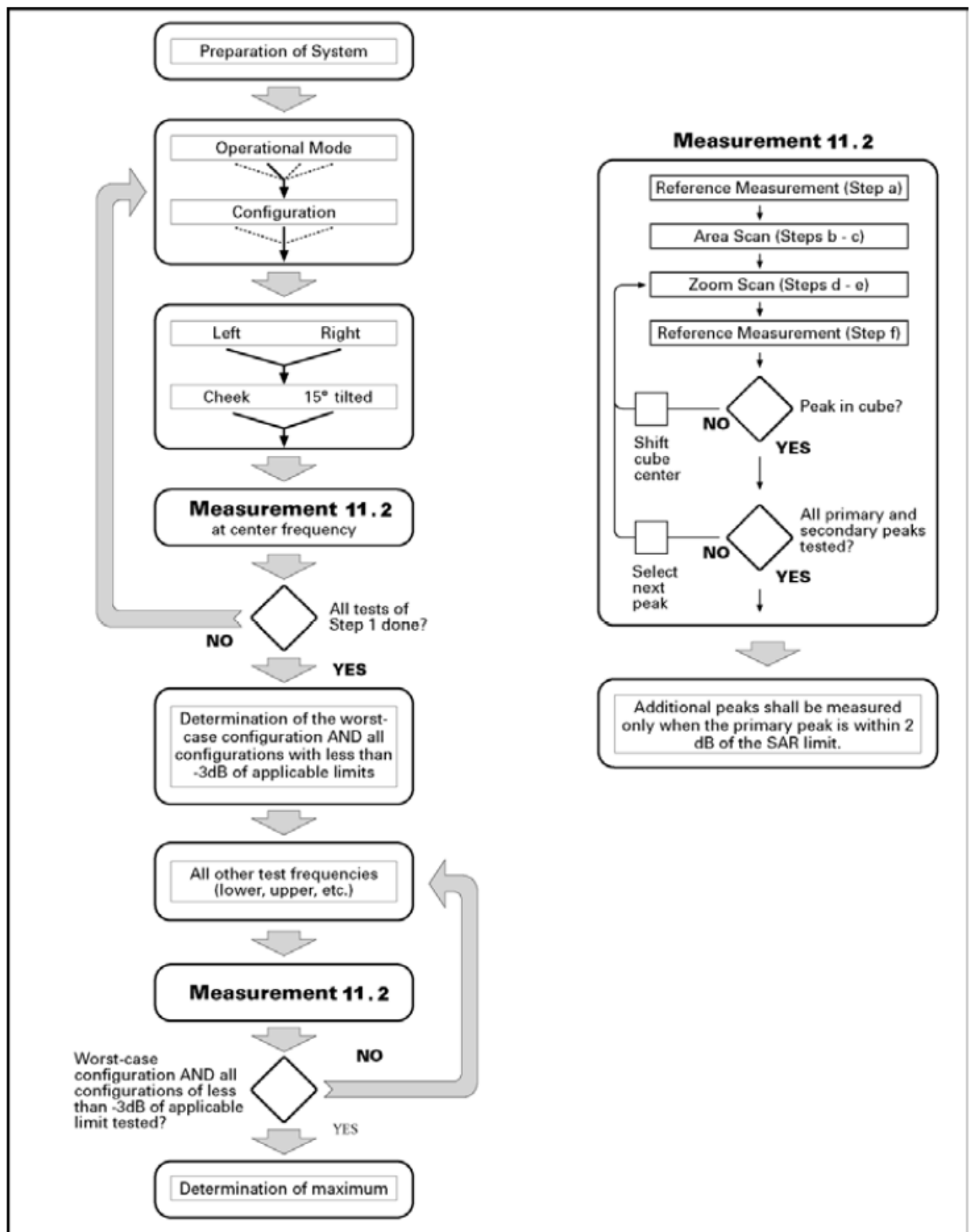
Step 1: The tests described in 11.2 shall be performed at the channel that is closest to the centre of the transmit frequency band (f_c) for:

- all device positions (cheek and tilt, for both left and right sides of the SAM phantom);
- all configurations for each device position in a), e.g., antenna extended and retracted, and
- all operational modes, e.g., analogue and digital, for each device position in a) and configuration in b) in each frequency band.

If more than three frequencies need to be tested according to 11.1 (i.e., $N_c > 3$), then all frequencies, configurations and modes shall be tested for all of the above test conditions.

Step 2: For the condition providing highest peak spatial-average SAR determined in Step 1, perform all tests described in 11.2 at all other test frequencies, i.e., lowest and highest frequencies. In addition, for all other conditions (device position, configuration and operational mode) where the peak spatial-average SAR value determined in Step 1 is within 3 dB of the applicable SAR limit, it is recommended that all other test frequencies shall be tested as well.

Step 3: Examine all data to determine the highest value of the peak spatial-average SAR found in Steps 1 to 2.



Picture 10.1 Block diagram of the tests to be performed

4.10.2 General Measurement Procedure

The area and zoom scan resolutions specified in the table below must be applied to the SAR measurements and fully documented in SAR reports to qualify for TCB approval. Probe boundary effect error compensation is required for measurements with the probe tip closer than half a probe tip diameter to the phantom surface. Both the probe tip diameter and sensor offset distance must satisfy measurement protocols; to ensure probe boundary effect errors are minimized and the higher fields closest to the phantom surface can be correctly measured and extrapolated to the phantom surface for computing 1-g SAR. Tolerances of the post-processing algorithms must be verified by the test laboratory for the scan resolutions used in the SAR measurements,

according to the reference distribution functions specified in IEEE Std 1528-2003. The results should be documented as part of the system validation records and may be requested to support test results when all the measurement parameters in the following table are not satisfied.

		≤ 3 GHz	> 3 GHz
Maximum distance from closest measurement point (geometric center of probe sensors) to phantom surface		5 ± 1 mm	$\frac{1}{2} \cdot \delta \cdot \ln(2) \pm 0.5$ mm
Maximum probe angle from probe axis to phantom surface normal at the measurement location		$30^\circ \pm 1^\circ$	$20^\circ \pm 1^\circ$
Maximum area scan spatial resolution: Δx_{Area} , Δy_{Area}		≤ 2 GHz: ≤ 15 mm 2 – 3 GHz: ≤ 12 mm	3 – 4 GHz: ≤ 12 mm 4 – 6 GHz: ≤ 10 mm
		When the x or y dimension of the test device, in the measurement plane orientation, is smaller than the above, the measurement resolution must be \leq the corresponding x or y dimension of the test device with at least one measurement point on the test device.	
Maximum zoom scan spatial resolution: Δx_{Zoom} , Δy_{Zoom}		≤ 2 GHz: ≤ 8 mm 2 – 3 GHz: ≤ 5 mm*	3 – 4 GHz: ≤ 5 mm* 4 – 6 GHz: ≤ 4 mm*
Maximum zoom scan spatial resolution, normal to phantom surface	uniform grid: $\Delta z_{Zoom}(n)$	≤ 5 mm	3 – 4 GHz: ≤ 4 mm 4 – 5 GHz: ≤ 3 mm 5 – 6 GHz: ≤ 2 mm
	graded grid $\Delta z_{Zoom}(1)$: between 1 st two points closest to phantom surface	≤ 4 mm	3 – 4 GHz: ≤ 3 mm 4 – 5 GHz: ≤ 2.5 mm 5 – 6 GHz: ≤ 2 mm
	$\Delta z_{Zoom}(n>1)$: between subsequent points	$\leq 1.5 \cdot \Delta z_{Zoom}(n-1)$	
Minimum zoom scan volume	x, y, z	≥ 30 mm	3 – 4 GHz: ≥ 28 mm 4 – 5 GHz: ≥ 25 mm 5 – 6 GHz: ≥ 22 mm
Note: δ is the penetration depth of a plane-wave at normal incidence to the tissue medium; see draft standard IEEE P1528-2011 for details.			
* When zoom scan is required and the <u>reported</u> SAR from the area scan based <i>I-g SAR estimation</i> procedures of KDB 447498 is ≤ 1.4 W/kg, ≤ 8 mm, ≤ 7 mm and ≤ 5 mm zoom scan resolution may be applied, respectively, for 2 GHz to 3 GHz, 3 GHz to 4 GHz and 4 GHz to 6 GHz.			

4.10.3 WLAN Measurement Procedures for SAR

For WLAN SAR testing, WLAN engineering testing software installed on the DUT can provide continuous transmitting RF signal. The Tx power is set to 58 for 802.11 b mode, set to 48 for 802.11 g mode, set to 40 for 802.11 n mode by software. This RF signal utilized in SAR measurement has almost 100% duty cycle and its crest factor is 1.

For the 802.11b/g/n SAR tests, a communication link is set up with the test mode software for WIFI mode test. During the test, at the each test frequency channel, the EUT is operated at the RF continuous emission mode. Each channel should be tested at the highest power rate.

802.11b/g/n operating modes are tested independently according to the service requirements in each frequency band. 802.11b/g/n modes are tested on the maximum average output channel;

SAR is not required for 802.11g/n channels when the maximum average output power is less than 0.25dB higher than that measured on the corresponding 802.11b channels.

4.10.4 Power Drift

To control the output power stability during the SAR test, DASY5 system calculates the power drift by measuring the E-field at the same location at the beginning and at the end of the measurement for each test position. These drift values can be found in Table 14.1 to Table 14.11 labeled as: (Power Drift [dB]). This ensures that the power drift during one measurement is within 5%.

4.10.4 Area Scan Based 1-g SAR

4.10.4.1 Requirement of KDB

According to the KDB447498 D01 v05, when the implementation is based the specific polynomial fit algorithm as presented at the 29th Bioelectromagnetics Society meeting (2007) and the estimated 1-g SAR is ≤ 1.2 W/kg, a zoom scan measurement is not required provided it is also not needed for any other purpose; for example, if the peak SAR location required for simultaneous transmission SAR test exclusion can be determined accurately by the SAR system or manually to discriminate between distinctive peaks and scattered noisy SAR distributions from area scans.

There must not be any warning or alert messages due to various measurement concerns identified by the SAR system; for example, noise in measurements, peaks too close to scan boundary, peaks are too sharp, spatial resolution and uncertainty issues etc. The SAR system verification must also demonstrate that the area scan estimated 1-g SAR is within 3% of the zoom scan 1-g SAR (See Annex B). When all the SAR results for each exposure condition in a frequency band and wireless mode are based on estimated 1-g SAR, the 1-g SAR for the highest SAR configuration must be determined by a zoom scan.

4.10.4.2 Fast SAR Algorithms

The approach is based on the area scan measurement applying a frequency dependent attenuation parameter. This attenuation parameter was empirically determined by analyzing a large number of phones. The MOTOROLA FAST SAR was developed and validated by the MOTOROLA Research Group in Ft. Lauderdale.

In the initial study, an approximation algorithm based on Linear fit was developed. The accuracy of the algorithm has been demonstrated across a broad frequency range (136-2450 MHz) and for both 1- and 10-g averaged SAR using a sample of 264 SAR measurements from 55 wireless handsets. For the sample size studied, the root-mean-squared errors of the algorithm are 1.2% and 5.8% for 1- and 10-g averaged SAR, respectively

In the second step, the same research group optimized the fitting algorithm to an Polynomial fit whereby the frequency validity was extended to cover the range 30-6000MHz. Details of this study can be found in the BEMS 2007 Proceedings.

Both algorithms are implemented in DASY software.

5. TEST CONDITIONS AND RESULTS

5.1. Conducted Power Results

Max Conducted power measurement results and power drift from tune-up tolerance provide by manufacturer:

WLAN

Mode	Channel	Frequency (MHz)	Worst case Data rate of worst case	Conducted Output Power (dBm)	
				Peak	Average
802.11b	1	2412	1Mbps	15.81	11.93
	6	2437	1Mbps	15.48	11.90
	11	2462	1Mbps	15.48	11.27
802.11g	1	2412	6Mbps	18.75	10.43
	6	2437	6Mbps	18.52	10.06
	11	2462	6Mbps	18.11	9.84
802.11n(20MHz)	1	2412	6.5 Mbps	16.15	7.74
	6	2437	6.5 Mbps	16.08	7.57
	11	2462	6.5 Mbps	15.97	6.88

Note: SAR is not required for 802.11g/n channels if the output power is less than 0.25dB higher than that measured on the corresponding 802.11b channels, and for each frequency band, testing at higher data rates and higher order modulations is not required when the maximum average output power for each of these configurations is less than 0.25dB higher than those measured at the lowest data rate. According to the above conducted power, the EUT should be tested for "802.11b, 1Mbps".

Bluetooth

Mode	Channel	Frequency (MHz)	Conducted Peak Output Power (dBm)
GFSK	00	2402	1.09
	39	2441	1.40
	78	2480	0.96
$\pi/4$ DQPSK	00	2402	0.94
	39	2441	0.99
	78	2480	0.31
8DPSK	00	2402	1.07
	39	2441	0.71
	78	2480	0.30

WLAN

802.11b			
Channel	Channel 1	Channel 6	Channel 11
Target (dBm)	11.0	11.0	11.0
Tolerance \pm (dB)	1	1	1
802.11g			
Channel	Channel 810	Channel 661	Channel 512
Target (dBm)	10.50	10.50	10.50
Tolerance \pm (dB)	1	1	1
802.11n(20MHz)			
Channel	Channel 1	Channel 6	Channel 11
Target (dBm)	7.0	7.0	7.0
Tolerance \pm (dB)	1	1	1

Bluetooth

GFSK			
Channel	Channel 00	Channel 41	Channel 79
Target (dBm)	1.0	1.0	1.0
Tolerance \pm (dB)	1	1	1
8DPSK			
Channel	Channel 00	Channel 41	Channel 79
Target (dBm)	1.0	1.0	1.0
Tolerance \pm (dB)	1	1	1

$\pi/4$ QPSK			
Channel	Channel 00	Channel 41	Channel 79
Target (dBm)	1.0	1.0	1.0
Tolerance \pm (dB)	1	1	1

5.2. Simultaneous TX SAR Considerations

5.2.1 Introduction

The following procedures adopted from "FCC SAR Considerations for Cell Phones with Multiple Transmitters" are applicable to handsets with built-in unlicensed transmitters such as 802.11 a/b/g and Bluetooth devices which may simultaneously transmit with the licensed transmitter.

For the DUT, the WLAN and BT modules sharing difference antenna, and so these two modules can not transmit signal simultaneously.

5.2.2 Transmit Antenna Separation Distances

The product can support WLAN and Bluetooth function, and WLAN and Bluetooth share same antenna, according to following picture 1 showed that the diagonal dimension (21.5cm > 20cm) and figure 2 for antenna position of the DUT. So according to KDB 616217 and KDB447498 for SAR testing.



Figure 1: The diagonal dimension of the DUT

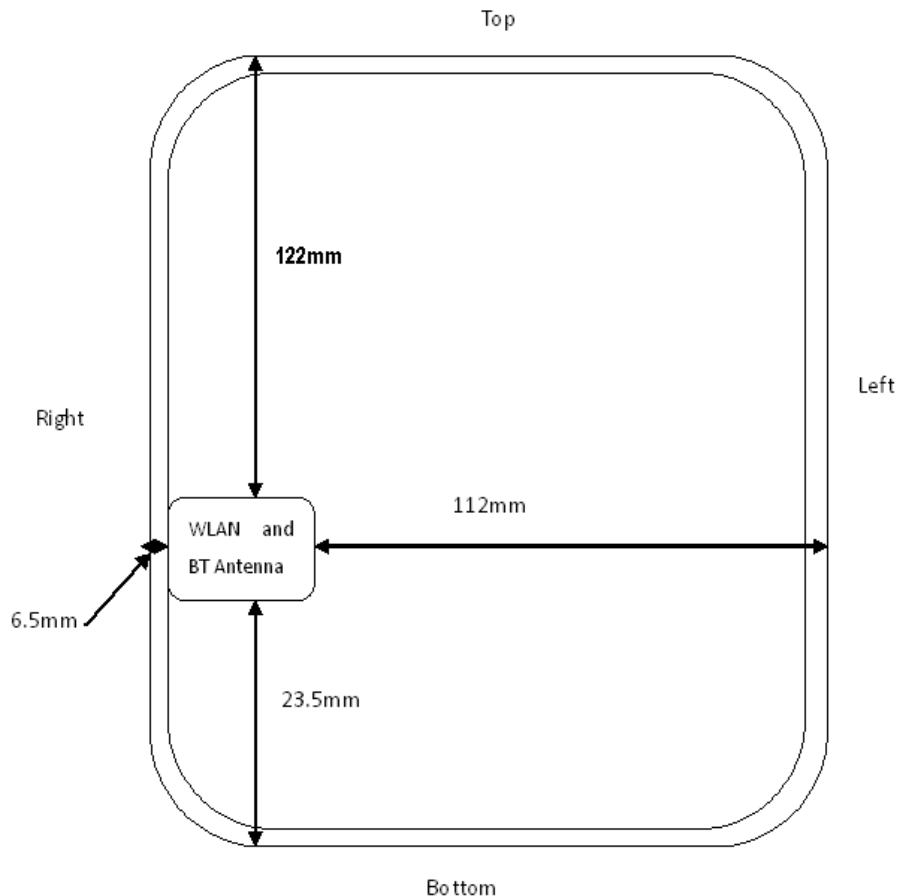


Figure 2: The antenna positions of the DUT

5.2.2 SAR Measurement Positions

According to KDB447498 and Figure 2 for antenna positions of the DUT;

1. Rear side: the back side of the EUT towards and contacted to the phantom.
2. Bottom side: SAR test was not required. Because the distance between WLAN antenna and Bottom side was 23.5mm, maximum average output power (including tune-up tolerance) $12.0\text{dBm} < 15.80\text{dBm}$ (38mW), according KDB447498 Appendix B SAR test exclusion power thresholds.
3. Left side: SAR test was not required. Because the distance between WLAN antenna and Left side was 112mm, maximum output power (including tune-up tolerance) $12.0\text{dBm} < 28.42\text{dBm}$ (696mW), according KDB447498 Appendix B SAR test exclusion power thresholds.
4. Top side: SAR test was not required. Because the distance between WLAN antenna and Top side was 122mm, maximum output power (including tune-up tolerance) $12.0\text{dBm} < 29.01\text{dBm}$ (796mW), according KDB447498 Appendix B SAR test exclusion power thresholds.
5. Right Side: SAR test was required. Because the distance between WLAN antenna and Right side was 6.5mm, maximum output power (including tune-up tolerance) $12.0\text{dBm} > 10.00\text{dBm}$ (10mW), according KDB447498 Appendix B SAR test exclusion power thresholds.
6. Front Side: SAR test was not required.
7. The 2/3/4 positions are not the most conservative antenna - to - user distance at edge mode. According to KDB 447498 4) ii) (2) -SAR is required only the edge with the most conservative exposure conditions, No SAR)

5.2.3 Standalone SAR Test Exclusion Considerations

Standalone 1-g head or body SAR evaluation by measurement or numerical simulation is not required when the corresponding SAR Exclusion Threshold condition, listed below, is satisfied.

The 1-g SAR test exclusion threshold for 100 MHz to 6 GHz at test separation distances ≤ 50 mm are determined by:

$$\left[\frac{\text{max. power of channel, including tune-up tolerance, mW}}{\text{min. test separation distance, mm}} \right] \cdot [\sqrt{f(\text{GHz})}] \leq 3.0 \text{ for 1-g SAR, where}$$

- $f(\text{GHz})$ is the RF channel transmit frequency in GHz
- Power and distance are rounded to the nearest mW and mm before calculation
- The result is rounded to one decimal place for comparison

Appendix A

SAR Test Exclusion Thresholds for 100 MHz – 6 GHz and ≤ 50 mm

Approximate SAR Test Exclusion Power Thresholds at Selected Frequencies and Test Separation Distances are illustrated in the following Table.

MHz	5	10	15	20	25	mm
150	39	77	116	155	194	SAR Test Exclusion Threshold (mW)
300	27	55	82	110	137	
450	22	45	67	89	112	
835	16	33	49	66	82	
900	16	32	47	63	79	
1500	12	24	37	49	61	
1900	11	22	33	44	54	
2450	10	19	29	38	48	
3600	8	16	24	32	40	
5200	7	13	20	26	33	
5400	6	13	19	26	32	
5800	6	12	19	25	31	

Picture 12.2 Power Thresholds

Table 5.2.3.1 Standalone SAR test exclusion considerations

Band/Mode	F(GHz)	SAR test exclusion threshold (mW)	RF output power		SAR test exclusion
			dBm	mW	
Bluetooth	2.441	10	1.40	1.380	Yes
2.4GHz WLAN 802.11 b	2.45	10	11.93	15.60	No

5.2.4 Estimated SAR

When standalone SAR is not required to be measured per FCC KDB 447498 D01, the following equation must be used to estimate the standalone 1g SAR for simultaneous transmission assessment involving that transmitter.

$$\text{Estimated SAR} = \frac{(\text{max. power of channel, including tune-up tolerance, mW}) * \sqrt{f(\text{GHz})}}{(\text{min. test separation distance, mm}) * 7.5}$$

Per FCC KD B447498 D01, simultaneous transmission SAR test exclusion may be applied when the sum of the 1-g SAR for all the transmitting antenna in a specific a physical test configuration is ≤ 1.6 W/Kg. When the sum is greater than the SAR limit, SAR test exclusion is determined by the SAR to peak location separation ratio.

$$\text{Ratio} = \frac{(\text{SAR}_1 + \text{SAR}_2)^{1.5}}{(\text{peak location separation, mm})} < 0.04$$

For Bluetooth, the Estimated SAR for Head at 5mm for estimate and 5mm to Estimated Body SAR

Estimated SAR_{Head} = ((1.38mW)/5mm) * (1.5627/7.5) = 0.0575W/Kg

Estimated SAR_{Body} = ((1.38mW)/5mm) * (1.5627/7.5) = 0.0575W/Kg

5.3. SAR Measurement Results

It is determined by user manual for the distance between the EUT and the phantom bottom. The distance is 5mm and just applied to the condition of body worn accessory.

The calculated SAR is obtained by the following formula:
 Reported SAR = Measured SAR * 10^{(P_{target} - P_{measured})/10}
 Scaling factor = 10^{(P_{target} - P_{measured})/10}
 Reported SAR = Measured SAR * Scaling factor

Where P_{target} is the power of manufacturing upper limit;
 P_{measured} is the measured power;
 Measured SAR is measured SAR at measured power which including power drift)
 Reported SAR which including Power Drift and Scaling factor

Duty Cycle

Test Mode	Duty Cycle
WLAN2450	1:1

SAR Values (WiFi 2450 MHz Band-Body)

Test Frequency		Test Position	Maximum Allowed Power (dBm)	Conducted Power (dBm)	Measurement SAR over 1g(W/kg)	Power drift	Scaling Factor	Reported SAR over1g (W/kg)	SAR limit 1g (W/kg)	Ref. Plot #
Ch	MHz									
6	2437	Front	12.00	11.90	N/A	N/A	N/A	N/A	N/A	N/A
6	2437	Rear	12.00	11.90	1.182	0.06	1.023	1.209	1.60	1
6	2437	Left	12.00	11.90	N/A	N/A	N/A	N/A	N/A	N/A
6	2437	Top	12.00	11.90	N/A	N/A	N/A	N/A	N/A	N/A
6	2437	Right	12.00	11.90	0.796	0.10	1.023	0.814	1.60	2
6	2437	Bottom	12.00	11.90	N/A	N/A	N/A	N/A	N/A	N/A
1	2412	Front	12.00	11.93	N/A	N/A	N/A	N/A	N/A	N/A
1	2412	Rear	12.00	11.93	0.964	-0.13	1.016	0.980	1.60	3
1	2412	Left	12.00	11.93	N/A	N/A	N/A	N/A	N/A	N/A
1	2412	Top	12.00	11.93	N/A	N/A	N/A	N/A	N/A	N/A
1	2412	Right	12.00	11.93	0.660	0.20	1.016	0.671	1.60	4
1	2412	Bottom	12.00	11.93	N/A	N/A	N/A	N/A	N/A	N/A
11	2462	Front	12.00	11.27	N/A	N/A	N/A	N/A	N/A	N/A
11	2462	Rear	12.00	11.27	1.070	-0.19	1.183	1.266	1.60	5
11	2462	Left	12.00	11.27	N/A	N/A	N/A	N/A	N/A	N/A
11	2462	Top	12.00	11.27	N/A	N/A	N/A	N/A	N/A	N/A
11	2462	Right	12.00	11.27	0.647	0.18	1.183	0.765	1.60	6
11	2462	Bottom	12.00	11.27	N/A	N/A	N/A	N/A	N/A	N/A

Note: 1. According to KDB447498, When the 1-g SAR for the mid-band channel, or the channel with highest output power satisfy the following conditions, testing of the other channels in the band is not required.

$\leq 0.8W/Kg$ and transmission band $\leq 100MHz$;

$\leq 0.6W/Kg$ and $100MHz \leq$ transmission band $\leq 200MHz$;

$\leq 0.4W/Kg$ and transmission band $>200MHz$

2. According to KDB 248227, Each channel should be tested at the lowest data rate in each mode.

5.4. SAR Measurement Variability

SAR measurement variability must be assessed for each frequency band, which is determined by the SAR probe calibration point and tissue-equivalent medium used for the device measurements. When both head and body tissue-equivalent media are required for SAR measurements in a frequency band, the variability measurement procedures should be applied to the tissue medium with the highest measured SAR, using the highest measured SAR configuration for that tissue-equivalent medium. The following procedures are applied to determine if repeated measurements are required.

- 1) Repeated measurement is not required when the original highest measured SAR is < 0.80 W/kg; steps 2) through 4) do not apply.
- 2) When the original highest measured SAR is ≥ 0.80 W/kg, repeat that measurement once.
- 3) Perform a second repeated measurement only if the ratio of largest to smallest SAR for the original and first repeated measurements is > 1.20 or when the original or repeated measurement is ≥ 1.45 W/kg ($\sim 10\%$ from the 1-g SAR limit).
- 4) Perform a third repeated measurement only if the original, first or second repeated measurement is ≥ 1.5 W/kg and the ratio of largest to smallest SAR for the original, first and second repeated measurements is > 1.20 .

Test Frequency		Test Position	Original SAR (W/kg)	First Repeated SAR (W/kg)	The Ratio	Second Repeated SAR (W/kg)	Ref. Plot #
Channel	MHz						
6	2437	Rear	1.182	1.100	0.93	/	7

Test Frequency		Test Position	Original SAR (W/kg)	First Repeated SAR (W/kg)	The Ratio	Second Repeated SAR (W/kg)	Ref. Plot #
Channel	MHz						
1	2412	Rear	0.964	0.957	0.99	/	8

Test Frequency		Test Position	Original SAR (W/kg)	First Repeated SAR (W/kg)	The Ratio	Second Repeated SAR (W/kg)	Ref. Plot #
Channel	MHz						
11	2462	Rear	1.070	0.994	0.93	/	8

5.5. Measurement Uncertainty (300MHz-3GHz)

No.	Error Description	Type	Uncertainty Value	Probably Distribution	Div.	(Ci) 1g	(Ci) 10g	Std. Unc. (1g)	Std. Unc. (10g)	Degree of freedom
Measurement System										
1	Probe calibration	B	5.50%	N	1	1	1	5.50%	5.50%	∞
2	Axial isotropy	B	4.70%	R	$\sqrt{3}$	0.7	0.7	1.90%	1.90%	∞
3	Hemispherical isotropy	B	9.60%	R	$\sqrt{3}$	0.7	0.7	3.90%	3.90%	∞
4	Boundary Effects	B	1.00%	R	$\sqrt{3}$	1	1	0.60%	0.60%	∞
5	Probe Linearity	B	4.70%	R	$\sqrt{3}$	1	1	2.70%	2.70%	∞
6	Detection limit	B	1.00%	R	$\sqrt{3}$	1	1	0.60%	0.60%	∞
7	RF ambient conditions-noise	B	0.00%	R	$\sqrt{3}$	1	1	0.00%	0.00%	∞
8	RF ambient conditions-reflection	B	0.00%	R	$\sqrt{3}$	1	1	0.00%	0.00%	∞
9	Response time	B	0.80%	R	$\sqrt{3}$	1	1	0.50%	0.50%	∞
10	Integration time	B	5.00%	R	$\sqrt{3}$	1	1	2.90%	2.90%	∞
11	RF ambient	B	3.00%	R	$\sqrt{3}$	1	1	1.70%	1.70%	∞
12	Probe positioned mech. restrictions	B	0.40%	R	$\sqrt{3}$	1	1	0.20%	0.20%	∞
13	Probe positioning with respect to phantom shell	B	2.90%	R	$\sqrt{3}$	1	1	1.70%	1.70%	∞
14	Max.SAR evaluation	B	3.90%	R	$\sqrt{3}$	1	1	2.30%	2.30%	∞
Test Sample Related										
15	Test sample positioning	A	1.86%	N	1	1	1	1.86%	1.86%	∞
16	Device holder uncertainty	A	1.70%	N	1	1	1	1.70%	1.70%	∞
17	Drift of output power	B	5.00%	R	$\sqrt{3}$	1	1	2.90%	2.90%	∞
Phantom and Set-up										
18	Phantom uncertainty	B	4.00%	R	$\sqrt{3}$	1	1	2.30%	2.30%	∞
19	Liquid conductivity (target)	B	5.00%	R	$\sqrt{3}$	0.64	0.43	1.80%	1.20%	∞
20	Liquid conductivity (meas.)	A	0.50%	N	1	0.64	0.43	0.32%	0.26%	∞
21	Liquid permittivity (target)	B	5.00%	R	$\sqrt{3}$	0.64	0.43	1.80%	1.20%	∞

22	Liquid permittivity (meas.)	A	0.16%	N	1	0.64	0.43	0.10%	0.07%	∞
Combined standard uncertainty	$u_c = \sqrt{\sum_{i=1}^{22} c_i^2 u_i^2}$		/	/	/	/	/	10.20%	10.00%	∞
Expanded uncertainty (confidence interval of 95 %)	$u_e = 2u_c$		/	R	K=2	/	/	20.40%	20.00%	∞

5.6. System Check Results

System Performance Check at 2450 MHz Body

DUT: Dipole 2450 MHz; Type: D2450V2; Serial: 884

Date/Time: 10/23/2013 AM

Communication System: CW; Frequency: 2450 MHz; Duty Cycle: 1:1

Medium parameters used (interpolated): $f = 2450$ MHz; $\sigma = 1.99$ S/m; $\epsilon_r = 53.70$; $\rho = 1000$ kg/m³

Phantom section: Flat Section

DASY5 Configuration:

Probe: ES3DV3 - SN3292; ConvF(4.24, 4.25, 4.25); Calibrated: 24/02/2013;

Sensor-Surface: 3mm (Mechanical Surface Detection)

Electronics: DAE4 Sn1315; Calibrated: 02/27/2013

Phantom: SAM 1; Type: SAM;

Measurement SW: DASY52, Version 52.8 (1); SEMCAD X Version 14.6.5 (6469)

Area Scan (61x91x1): Measurement grid: dx=15.00 mm, dy=15.00 mm

Maximum value of SAR (interpolated) = 14.9 mW/g

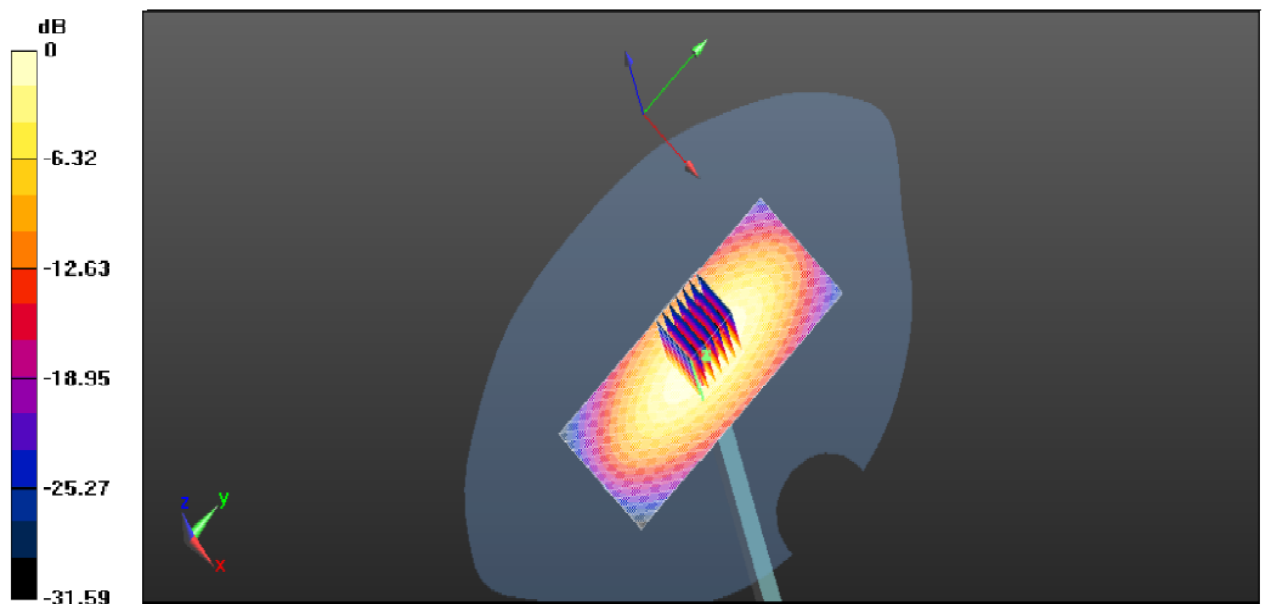
Zoom Scan (7x7x7)/Cube 0: Measurement grid: dx=5mm, dy=5mm, dz=5mm

Reference Value = 97.714 V/m; Power Drift = -0.05 dB

Peak SAR (extrapolated) = 26.08 mW/g

SAR(1 g) = 12.83 mW/g; SAR(10 g) = 6.10 mW/g

Maximum value of SAR (measured) = 14.8 mW/g



0 dB = 14.9 mW/g = 23.46 dB mW/g

5.7. SAR Test Graph Results

WLAN2450 Rear Side Middle Channel -Channel 6-2437MHz (1Mbps)

Communication System: Customer System; Frequency: 2437 MHz; Duty Cycle: 1:1

Medium parameters used (interpolated): $f = 2437$ MHz; $\sigma = 2.02$ S/m; $\epsilon_r = 53.00$; $\rho = 1000$ kg/m³

Phantom section: Body- worn

Probe: ES3DV3 - SN3292; ConvF(4.25, 4.25, 4.25); Calibrated: 24/02/2013;

Sensor-Surface: 4mm (Mechanical Surface Detection)

Electronics: DAE4 Sn1315; Calibrated: 27/02/2013

Phantom: SAM 1; Type: SAM;

Measurement SW: DASY52, Version 52.8 (2); SEMCAD X Version 14.6.6 (6824)

Area Scan (31x91x1): Measurement grid: dx=1.50 mm, dy=1.50 mm

Maximum value of SAR (interpolated) = 0.894 W/kg

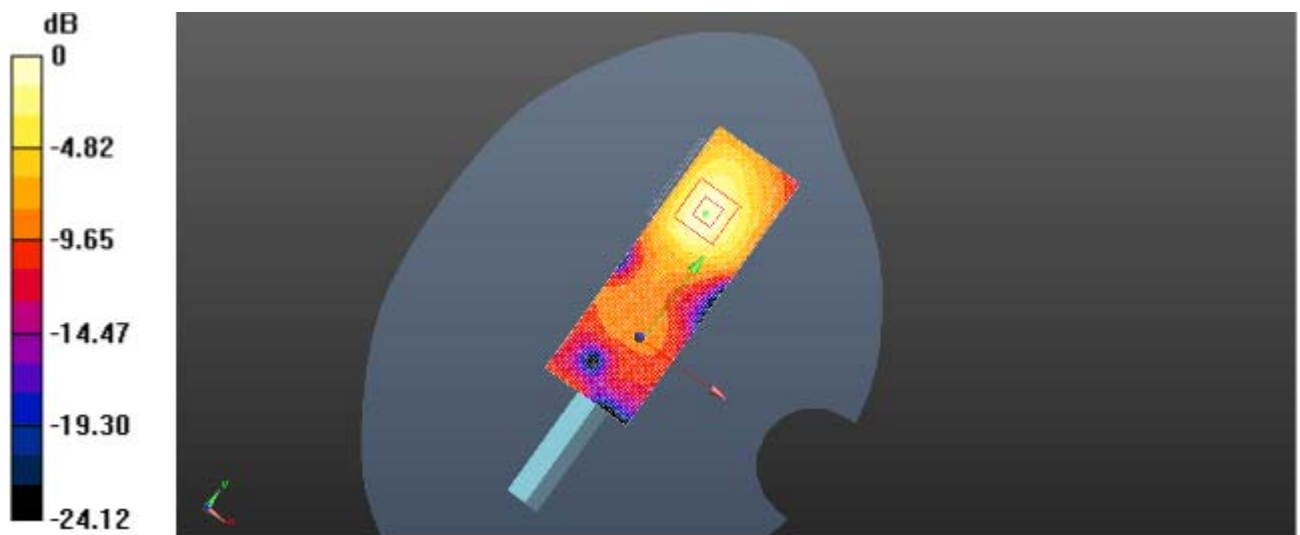
Zoom Scan (7x7x5)/Cube 0: Measurement grid: dx=5mm, dy=5mm, dz=5mm

Reference Value = 6.358 V/m; Power Drift = 0.06 dB

Peak SAR (extrapolated) = 1.34 W/Kg

SAR(1 g) = 1.182 W/Kg; SAR(10 g) = 0.861 W/Kg

Maximum value of SAR (measured) = 0.996 W/kg



0dB = 0.996 W/kg = 1.32 dBW/kg

Plot 1: Front Side (WLAN2450-Middle Channel-Channel 6-2437MHz(1Mbps))

WLAN2450 Right Side Middle Channel –Channel 11-2462MHz (1Mbps)

Communication System: Customer System; Frequency: 2437 MHz;Duty Cycle:1:1

Medium parameters used (interpolated): $f = 2437$ MHz; $\sigma = 2.02$ S/m; $\epsilon_r = 53.00$; $\rho = 1000$ kg/m³

Phantom section: Body- worn

Probe: ES3DV3 - SN3292; ConvF(4.25, 4.25, 4.25); Calibrated: 24/02/2013;

Sensor-Surface: 4mm (Mechanical Surface Detection)

Electronics: DAE4 Sn1315; Calibrated: 27/02/2013

Phantom: SAM 1; Type: SAM;

Measurement SW: DASY52, Version 52.8 (2); SEMCAD X Version 14.6.6 (6824)

Area Scan (31x91x1): Measurement grid: dx=1.50 mm, dy=1.50 mm

Maximum value of SAR (interpolated) =0.951 W/kg

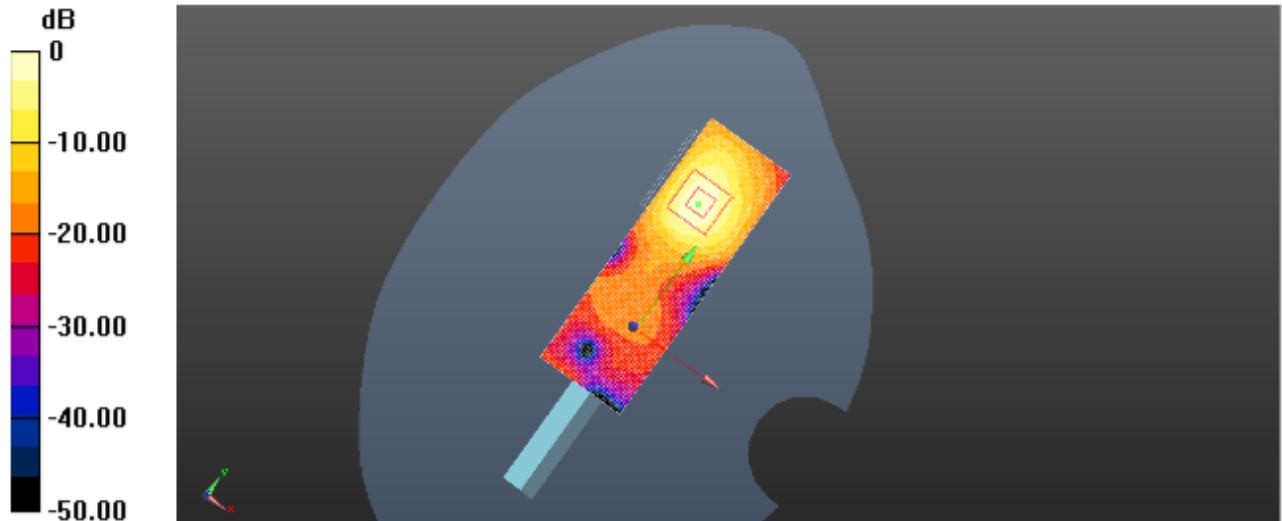
Zoom Scan (7x7x5)/Cube 0: Measurement grid: dx=5mm, dy=5mm, dz=5mm

Reference Value = 2.876 V/m; Power Drift = 0.10 dB

Peak SAR (extrapolated) = 1.68 W/kg

SAR(1 g) = 0.796 W/kg; SAR(10 g) = 0.338 W/kg

Maximum value of SAR (measured) = 0.915 W/kg



0 dB = 0.915 W/kg = -0.22 dB W/kg

Plot 2: Right Side (WLAN2450-Middle Channel-Channel 6-2437MHz(1Mbps))

WLAN2450 Rear Side Low Channel -Channel 1-2412MHz (1Mbps)

Communication System: Customer System; Frequency: 2412 MHz;Duty Cycle:1:1

Medium parameters used (interpolated): $f = 2412$ MHz; $\sigma = 1.97$ S/m; $\epsilon_r = 53.55$; $\rho = 1000$ kg/m³

Phantom section: Body- worn

Probe: ES3DV3 - SN3292; ConvF(4.25, 4.25, 4.25); Calibrated: 24/02/2013;

Sensor-Surface: 4mm (Mechanical Surface Detection)

Electronics: DAE4 Sn1315; Calibrated: 27/02/2013

Phantom: SAM 1; Type: SAM;

Measurement SW: DASY52, Version 52.8 (2); SEMCAD X Version 14.6.6 (6824)

Area Scan (31x91x1): Measurement grid: dx=1.50 mm, dy=1.50 mm

Maximum value of SAR (interpolated) = 0.872 W/kg

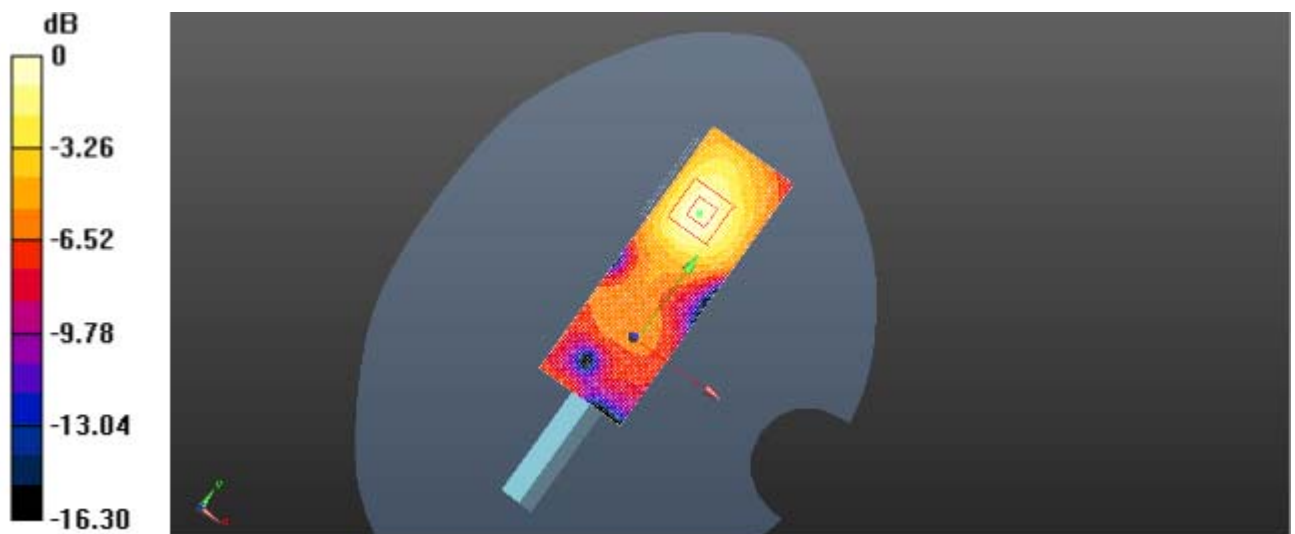
Zoom Scan (7x7x5)/Cube 0: Measurement grid: dx=5mm, dy=5mm, dz=5mm

Reference Value = 6.348 V/m; Power Drift = -0.13 dB

Peak SAR (extrapolated) = 1.28 W/Kg

SAR(1 g) = 0.964 W/Kg; SAR(10 g) = 0.690 W/Kg

Maximum value of SAR (measured) = 0.872 W/kg



0 dB = 0.915 W/kg = -0.22 dB W/kg

Plot 3: Rear Side (WLAN2450-Low Channel-Channel 1-2412MHz (1Mbps))

WLAN2450 Right Side Low Channel -Channel 1-2412MHz (1Mbps)

Communication System: Customer System; Frequency: 2412 MHz;Duty Cycle:1:1

Medium parameters used (interpolated): $f = 2412$ MHz; $\sigma = 1.97$ S/m; $\epsilon_r = 53.55$; $\rho = 1000$ kg/m³

Phantom section: Body- worn

Probe: ES3DV3 - SN3292; ConvF(4.25, 4.25, 4.25); Calibrated: 24/02/2013;

Sensor-Surface: 4mm (Mechanical Surface Detection)

Electronics: DAE4 Sn1315; Calibrated: 27/02/2013

Phantom: SAM 1; Type: SAM;

Measurement SW: DASY52, Version 52.8 (2); SEMCAD X Version 14.6.6 (6824)

Area Scan (31x91x1): Measurement grid: dx=1.50 mm, dy=1.50 mm

Maximum value of SAR (interpolated) = 0.795 W/kg

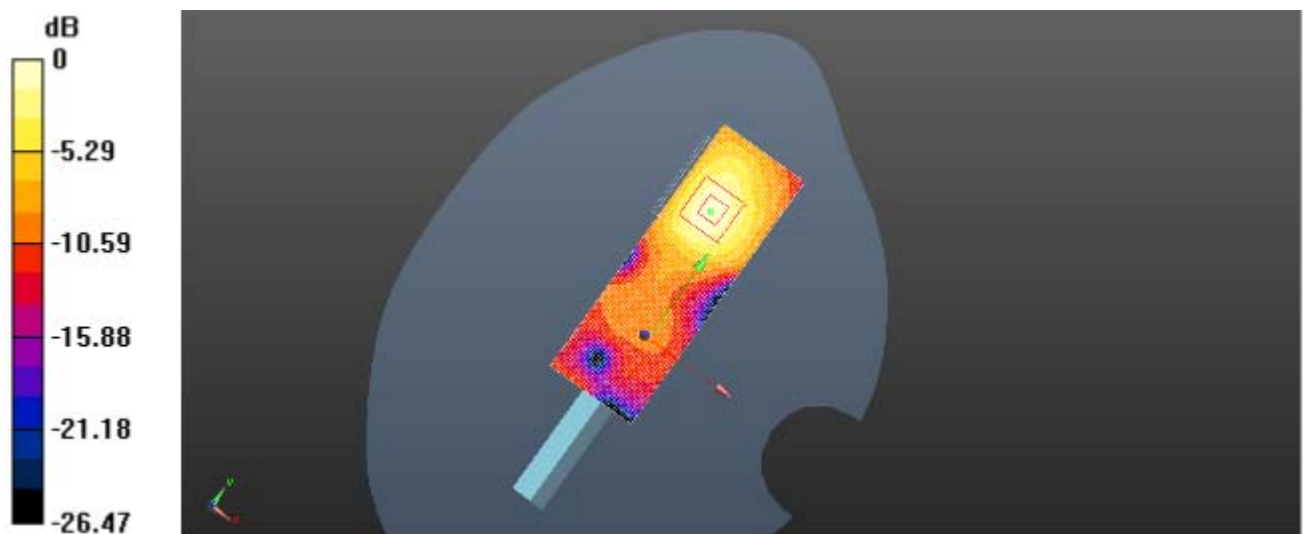
Zoom Scan (7x7x5)/Cube 0: Measurement grid: dx=5mm, dy=5mm, dz=5mm

Reference Value = 11.626 V/m; Power Drift = 0.20 dB

Peak SAR (extrapolated) = 1.45 W/Kg

SAR(1 g) = 0.660 W/g; SAR(10 g) = 0.309 W/Kg

Maximum value of SAR (measured) = 0.739 W/kg



0dB = 0.591 W/kg = -2.28 dBW/kg

Plot 4: Right Side (WLAN2450-Low Channel-Channel 1-2412MHz(1Mbps))

WLAN2450 Rear Side High Channel –Channel 11-2462MHz (1Mbps)

Communication System: Customer System; Frequency: 2462 MHz;Duty Cycle:1:1

Medium parameters used (interpolated): $f = 2462$ MHz; $\sigma = 1.93$ S/m; $\epsilon_r = 52.47$; $\rho = 1000$ kg/m³

Phantom section: Body- worn

Probe: ES3DV3 - SN3292; ConvF(4.25, 4.25, 4.25); Calibrated: 24/02/2013;

Sensor-Surface: 4mm (Mechanical Surface Detection)

Electronics: DAE4 Sn1315; Calibrated: 27/02/2013

Phantom: SAM 1; Type: SAM;

Measurement SW: DASY52, Version 52.8 (2); SEMCAD X Version 14.6.6 (6824)

Area Scan (31x91x1): Measurement grid: dx=1.50 mm, dy=1.50 mm

Maximum value of SAR (interpolated) = 0.854 W/kg

Zoom Scan (7x7x5)/Cube 0: Measurement grid: dx=5mm, dy=5mm, dz=5mm

Reference Value = 6.654 V/m; Power Drift = -0.19 dB

Peak SAR (extrapolated) = 1.18 W/Kg

SAR(1 g) = 1.070 W/Kg; SAR(10 g) = 0.847 W/Kg

Maximum value of SAR (measured) = 0.893 W/kg



0dB = 0.893 W/kg = -0.05 dBW/kg

Plot 5: Rear Side (WLAN2450-Low Channel-Channel 11-2462MHz(1Mbps))

WLAN2450 Right Side High Channel -Channel 11-2462MHz (1Mbps)

Communication System: Customer System; Frequency: 2462 MHz;Duty Cycle:1:1

Medium parameters used (interpolated): $f = 2462$ MHz; $\sigma = 1.93$ S/m; $\epsilon_r = 52.47$; $\rho = 1000$ kg/m³

Phantom section: Body- worn

Probe: ES3DV3 - SN3292; ConvF(4.25, 4.25, 4.25); Calibrated: 24/02/2013;

Sensor-Surface: 4mm (Mechanical Surface Detection)

Electronics: DAE4 Sn1315; Calibrated: 27/02/2013

Phantom: SAM 1; Type: SAM;

Measurement SW: DASY52, Version 52.8 (2); SEMCAD X Version 14.6.6 (6824)

Area Scan (31x91x1): Measurement grid: dx=1.50 mm, dy=1.50 mm

Maximum value of SAR (interpolated) = 0.743 W/kg

Zoom Scan (7x7x5)/Cube 0: Measurement grid: dx=5mm, dy=5mm, dz=5mm

Reference Value = 2.434 V/m; Power Drift = 0.18 dB

Peak SAR (extrapolated) = 1.39 W/kg

SAR(1 g) = 0.647 W/kg; SAR(10 g) = 0.271 W/kg

SAR(1 g) = 0.647 W/kg; SAR(10 g) = 0.271 W/kg



0 dB = 0.915 W/kg = -0.22 dB W/kg

Plot 6: Right Side (WLAN2450-High Channel-Channel 11-2462MHz (1Mbps))

5.8. SAR Measurement Variability

WLAN2450 Rear Side Middle Channel -Channel 6-2437MHz (1Mbps)

Communication System: Customer System; Frequency: 2437 MHz;Duty Cycle:1:1

Medium parameters used (interpolated): $f = 2437$ MHz; $\sigma = 2.02$ S/m; $\epsilon_r = 53.00$; $\rho = 1000$ kg/m³

Phantom section: Body- worn

Probe: ES3DV3 - SN3292; ConvF(4.25, 4.25, 4.25); Calibrated: 24/02/2013;

Sensor-Surface: 4mm (Mechanical Surface Detection)

Electronics: DAE4 Sn1315; Calibrated: 27/02/2013

Phantom: SAM 1; Type: SAM;

Measurement SW: DASY52, Version 52.8 (2); SEMCAD X Version 14.6.6 (6824)

Area Scan (31x91x1): Measurement grid: dx=1.50 mm, dy=1.50 mm

Maximum value of SAR (interpolated) = 0.943 W/kg

Zoom Scan (7x7x5)/Cube 0: Measurement grid: dx=5mm, dy=5mm, dz=5mm

Reference Value = 6.247 V/m; Power Drift = -0.10 dB

Peak SAR (extrapolated) = 0.91 W/Kg

SAR(1 g) = 1.10 W/Kg; SAR(10 g) = 0.743 W/Kg

Maximum value of SAR (measured) = 0.908 W/kg



0dB = 0.908 W/kg = -0.61 dBW/kg

Plot 7: Front Side (WLAN2450-Middle Channel-Channel 6-2437MHz(1Mbps))

WLAN2450 Rear Side Low Channel -Channel 1-2412MHz (1Mbps)

Communication System: Customer System; Frequency: 2412 MHz;Duty Cycle:1:1

Medium parameters used (interpolated): $f = 2412$ MHz; $\sigma = 1.97$ S/m; $\epsilon_r = 53.55$; $\rho = 1000$ kg/m³

Phantom section: Body- worn

Probe: ES3DV3 - SN3292; ConvF(4.25, 4.25, 4.25); Calibrated: 24/02/2013;

Sensor-Surface: 4mm (Mechanical Surface Detection)

Electronics: DAE4 Sn1315; Calibrated: 27/02/2013

Phantom: SAM 1; Type: SAM;

Measurement SW: DASY52, Version 52.8 (2); SEMCAD X Version 14.6.6 (6824)

Area Scan (31x91x1): Measurement grid: dx=1.50 mm, dy=1.50 mm

Maximum value of SAR (interpolated) = 0.861 W/kg

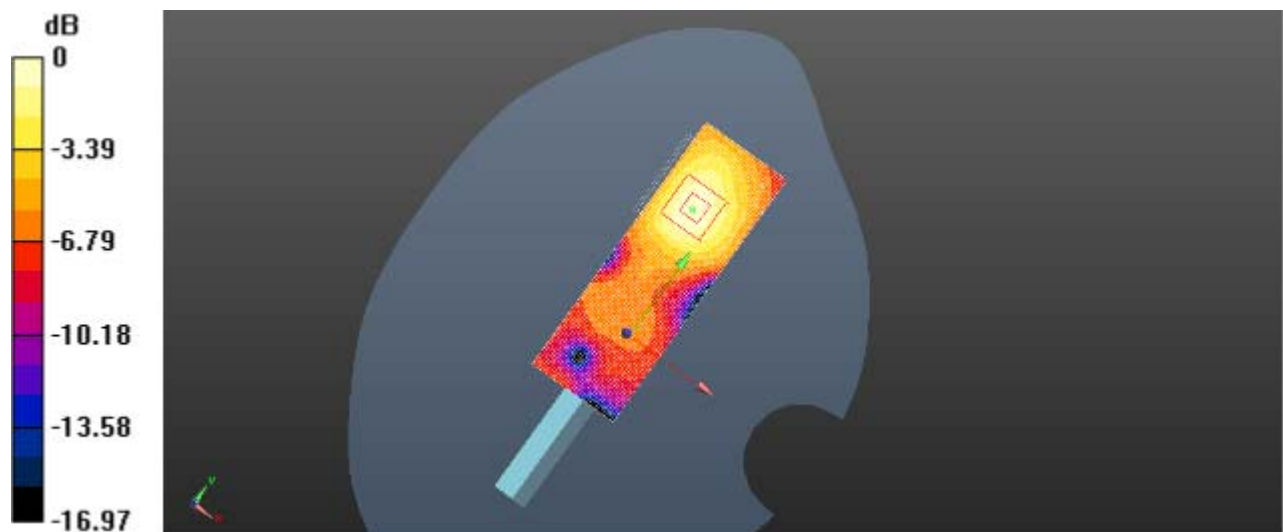
Zoom Scan (7x7x5)/Cube 0: Measurement grid: dx=5mm, dy=5mm, dz=5mm

Reference Value = 5.964 V/m; Power Drift = -0.02 dB

Peak SAR (extrapolated) = 1.26 W/Kg

SAR(1 g) = 0.957 W/Kg; SAR(10 g) = 0.683 W/Kg

Maximum value of SAR (measured) = 0.995 W/kg



0dB = 0.995 W/kg = 0.18 dBW/kg

Plot 8: Rear Side (WLAN2450-Low Channel-Channel 1-2412MHz (1Mbps))

WLAN2450 Rear Side High Channel –Channel 11-2462MHz (1Mbps)

Communication System: Customer System; Frequency: 2462 MHz;Duty Cycle:1:1

Medium parameters used (interpolated): $f = 2462$ MHz; $\sigma = 1.93$ S/m; $\epsilon_r = 52.47$; $\rho = 1000$ kg/m³

Phantom section: Body- worn

Probe: ES3DV3 - SN3292; ConvF(4.25, 4.25, 4.25); Calibrated: 24/02/2013;

Sensor-Surface: 4mm (Mechanical Surface Detection)

Electronics: DAE4 Sn1315; Calibrated: 27/02/2013

Phantom: SAM 1; Type: SAM;

Measurement SW: DASY52, Version 52.8 (2); SEMCAD X Version 14.6.6 (6824)

Area Scan (31x91x1): Measurement grid: dx=1.50 mm, dy=1.50 mm

Maximum value of SAR (interpolated) = 0.914 W/kg

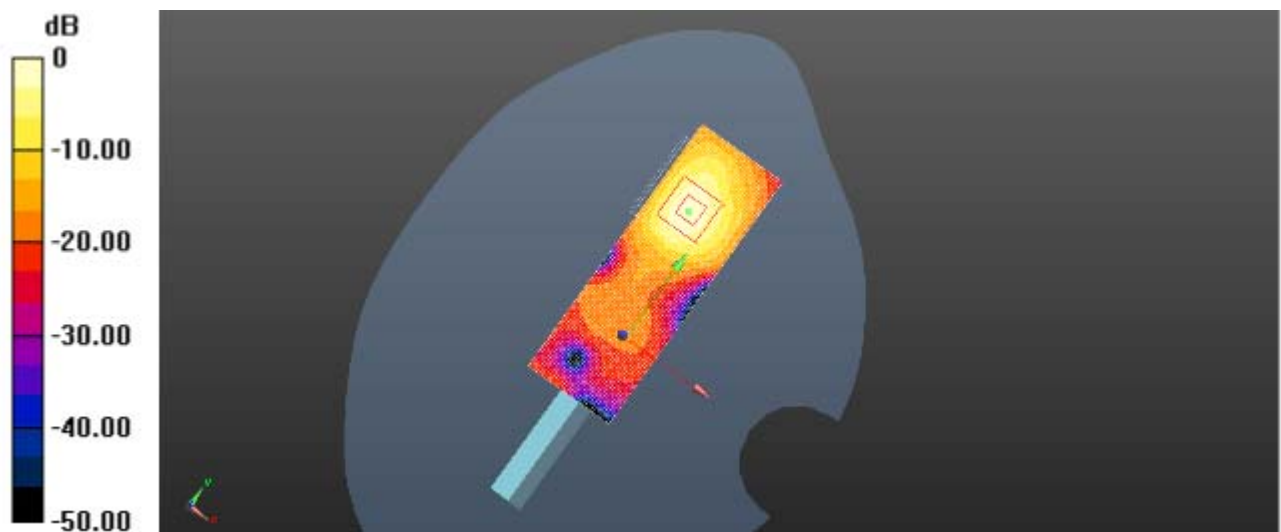
Zoom Scan (7x7x5)/Cube 0: Measurement grid: dx=5mm, dy=5mm, dz=5mm

Reference Value = 7.547 V/m; Power Drift = 0.15 dB

Peak SAR (extrapolated) = 0.846 W/Kg

SAR(1 g) = 0.994 W/Kg; SAR(10 g) = 0.726 W/Kg

Maximum value of SAR (measured) = 0.991 W/kg



0dB = 0.991 W/kg = 2.04 dBW/kg

Plot 9: Rear Side (WLAN2450-Low Channel-Channel 11-2462MHz(1Mbps))

6. Calibration Certificate

6.1. Probe Calibration Certificate

Calibration Laboratory of
Schmid & Partner
Engineering AG
Zeughausstrasse 43, 8004 Zurich, Switzerland



S Schweizerischer Kalibrierdienst
C Service suisse d'étalonnage
S Servizio svizzero di taratura
S Swiss Calibration Service

Accredited by the Swiss Accreditation Service (SAS)

Accreditation No.: SCS 108

The Swiss Accreditation Service is one of the signatories to the EA
Multilateral Agreement for the recognition of calibration certificates

Client **CIQ SZ (Auden)**

Certificate No: **ES3-3292_Feb13**

CALIBRATION CERTIFICATE

Object	ES3DV3 - SN:3292
Calibration procedure(s)	QA CAL-01.v8, QA CAL-14.v7, QA CAL-23.v4, QA CAL-25.v4 Calibration procedure for dosimetric E-field probes
Calibration date:	February 24, 2013
This calibration certificate documents the traceability to national standards, which realize the physical units of measurements (SI). The measurements and the uncertainties with confidence probability are given on the following pages and are part of the certificate.	
All calibrations have been conducted in the closed laboratory facility: environment temperature (22 ± 3)°C and humidity < 70%.	
Calibration Equipment used (M&TE critical for calibration)	

Primary Standards	ID	Cal Date (Certificate No.)	Scheduled Calibration
Power meter E4419B	GB41293874	31-Mar-12 (No. 217-01372)	Apr-13
Power sensor E4412A	MY41498087	31-Mar-12 (No. 217-01372)	Apr-13
Reference 3 dB Attenuator	SN: S5054 (3c)	29-Mar-12 (No. 217-01369)	Apr-13
Reference 20 dB Attenuator	SN: S5086 (20b)	29-Mar-12 (No. 217-01367)	Apr-13
Reference 30 dB Attenuator	SN: S5129 (30b)	29-Mar-12 (No. 217-01370)	Apr-13
Reference Probe ES3DV2	SN: 3013	29-Dec-12 (No. ES3-3013_Dec12)	Dec-13
DAE4	SN: 654	3-May-12 (No. DAE4-654_May12)	May-13
Secondary Standards	ID	Check Date (in house)	Scheduled Check
RF generator HP 8648C	US3642U01700	4-Aug-99 (in house check Apr-12)	In house check: Apr-13
Network Analyzer HP 8753E	US37390585	18-Oct-01 (in house check Oct-12)	In house check: Oct-13

Calibrated by:	Name Jeton Kastrati	Function Laboratory Technician	Signature
Approved by:	Name Katja Pokovic	Function Technical Manager	Signature
			Issued: February 27, 2013
This calibration certificate shall not be reproduced except in full without written approval of the laboratory.			

Calibration Laboratory of
Schmid & Partner
Engineering AG
Zeughausstrasse 43, 8034 Zurich, Switzerland



S Schweizerischer Kalibrierdienst
C Service suisse d'étalonnage
S Servizio svizzero di taratura
Swiss Calibration Service

Accredited by the Swiss Accreditation Service (SAS)

Accreditation No.: **SCS 108**

The Swiss Accreditation Service is one of the signatories to the EA Multilateral Agreement for the recognition of calibration certificates

Glossary:

TSL	tissue simulating liquid
NORM _{x,y,z}	sensitivity in free space
ConvF	sensitivity in TSL / NORM _{x,y,z}
DCP	diode compression point
CF	crest factor (1/duty_cycle) of the RF signal
A, B, C	modulation dependent linearization parameters
Polarization φ	φ rotation around probe axis
Polarization ϑ	ϑ rotation around an axis that is in the plane normal to probe axis (at measurement center), i.e., $\vartheta = 0$ is normal to probe axis

Calibration is Performed According to the Following Standards:

- IEEE Std 1528-2003, "IEEE Recommended Practice for Determining the Peak Spatial-Averaged Specific Absorption Rate (SAR) in the Human Head from Wireless Communications Devices: Measurement Techniques", December 2003
- IEC 62209-1, "Procedure to measure the Specific Absorption Rate (SAR) for hand-held devices used in close proximity to the ear (frequency range of 300 MHz to 3 GHz)", February 2005

Methods Applied and Interpretation of Parameters:

- NORM_{x,y,z}**: Assessed for E-field polarization $\vartheta = 0$ ($f \leq 900$ MHz in TEM-cell; $f > 1800$ MHz: R22 waveguide). NORM_{x,y,z} are only intermediate values, i.e., the uncertainties of NORM_{x,y,z} does not affect the E^2 -field uncertainty inside TSL (see below ConvF).
- NORM(f)_{x,y,z}** = NORM_{x,y,z} * frequency_response (see Frequency Response Chart). This linearization is implemented in DASY4 software versions later than 4.2. The uncertainty of the frequency response is included in the stated uncertainty of ConvF.
- DCP_{x,y,z}**: DCP are numerical linearization parameters assessed based on the data of power sweep with CW signal (no uncertainty required). DCP does not depend on frequency nor media.
- PAR**: PAR is the Peak to Average Ratio that is not calibrated but determined based on the signal characteristics
- A_{x,y,z}; B_{x,y,z}; C_{x,y,z}; VR_{x,y,z}**: A, B, C are numerical linearization parameters assessed based on the data of power sweep for specific modulation signal. The parameters do not depend on frequency nor media. VR is the maximum calibration range expressed in RMS voltage across the diode.
- ConvF and Boundary Effect Parameters**: Assessed in flat phantom using E-field (or Temperature Transfer Standard for $f \leq 800$ MHz) and inside waveguide using analytical field distributions based on power measurements for $f > 800$ MHz. The same setups are used for assessment of the parameters applied for boundary compensation (alpha, depth) of which typical uncertainty values are given. These parameters are used in DASY4 software to improve probe accuracy close to the boundary. The sensitivity in TSL corresponds to NORM_{x,y,z} * ConvF whereby the uncertainty corresponds to that given for ConvF. A frequency dependent ConvF is used in DASY version 4.4 and higher which allows extending the validity from ± 50 MHz to ± 100 MHz.
- Spherical isotropy (3D deviation from isotropy)**: in a field of low gradients realized using a flat phantom exposed by a patch antenna.
- Sensor Offset**: The sensor offset corresponds to the offset of virtual measurement center from the probe tip (on probe axis). No tolerance required.

ES3DV3 – SN:3292

February 24, 2013

Probe ES3DV3

SN:3292

Manufactured: July 6, 2010
Calibrated: February 24, 2013

Calibrated for DASY/EASY Systems
(Note: non-compatible with DASY2 system!)

ES3DV3- SN:3292

February 24, 2013

DASY/EASY - Parameters of Probe: ES3DV3 - SN:3292**Basic Calibration Parameters**

	Sensor X	Sensor Y	Sensor Z	Unc (k=2)
Norm ($\mu\text{V}/(\text{V}/\text{m})^2$) ^A	0.81	0.90	1.18	$\pm 10.1 \%$
DCP (mV) ^B	105.9	104.7	102.0	

Modulation Calibration Parameters

UID	Communication System Name	PAR		A dB	B dB	C dB	VR mV	Unc ^E (k=2)
10000	CW	0.00	X	0.00	0.00	1.00	117.3	$\pm 2.2 \%$
			Y	0.00	0.00	1.00	94.2	
			Z	0.00	0.00	1.00	108.2	

The reported uncertainty of measurement is stated as the standard uncertainty of measurement multiplied by the coverage factor $k=2$, which for a normal distribution corresponds to a coverage probability of approximately 95%.

^A The uncertainties of NormX,Y,Z do not affect the E^2 -field uncertainty inside TSL (see Pages 5 and 6).

^B Numerical linearization parameter: uncertainty not required.

^E Uncertainty is determined using the max. deviation from linear response applying rectangular distribution and is expressed for the square of the field value.

ES3DV3- SN:3292

February 24, 2013

DASY/EASY - Parameters of Probe: ES3DV3 - SN:3292

Calibration Parameter Determined in Head Tissue Simulating Media

f (MHz) ^C	Relative Permittivity ^F	Conductivity (S/m) ^F	ConvF X	ConvF Y	ConvF Z	Alpha	Depth (mm)	Unct. (k=2)
450	43.5	0.87	6.71	6.71	6.71	0.15	1.80	± 13.4 %
835	41.5	0.90	6.06	6.06	6.06	0.26	2.19	± 12.0 %
900	41.5	0.97	6.03	6.03	6.03	0.29	2.00	± 12.0 %
1810	40.0	1.40	5.25	5.25	5.25	0.80	1.17	± 12.0 %
1900	40.0	1.40	5.21	5.21	5.21	0.63	1.38	± 12.0 %
2100	39.8	1.49	5.15	5.15	5.15	0.80	1.20	± 12.0 %
2450	39.2	1.80	4.47	4.47	4.47	0.63	1.50	± 12.0 %

^C Frequency validity of ± 100 MHz only applies for DASY v4.4 and higher (see Page 2), else it is restricted to ± 50 MHz. The uncertainty is the RSS of the ConvF uncertainty at calibration frequency and the uncertainty for the indicated frequency band.

^F At frequencies below 3 GHz, the validity of tissue parameters (ϵ and σ) can be relaxed to ± 10% if liquid compensation formula is applied to measured SAR values. At frequencies above 3 GHz, the validity of tissue parameters (ϵ and σ) is restricted to ± 5%. The uncertainty is the RSS of the ConvF uncertainty for indicated target tissue parameters.

ES3DV3– SN:3292

February 24, 2013

DASY/EASY - Parameters of Probe: ES3DV3 - SN:3292

Calibration Parameter Determined in Body Tissue Simulating Media

f (MHz) ^C	Relative Permittivity ^F	Conductivity (S/m) ^F	ConvF X	ConvF Y	ConvF Z	Alpha	Depth (mm)	Unct. (k=2)
450	56.7	0.94	7.10	7.10	7.10	0.09	1.00	± 13.4 %
835	55.2	0.97	6.14	6.14	6.14	0.42	1.57	± 12.0 %
900	55.0	1.05	6.07	6.07	6.07	0.48	1.49	± 12.0 %
1810	53.3	1.52	4.86	4.86	4.86	0.62	1.42	± 12.0 %
1900	53.3	1.52	4.66	4.66	4.66	0.47	1.75	± 12.0 %
2100	53.2	1.62	4.76	4.76	4.76	0.70	1.39	± 12.0 %
2450	52.7	1.95	4.25	4.25	4.25	0.80	1.03	± 12.0 %

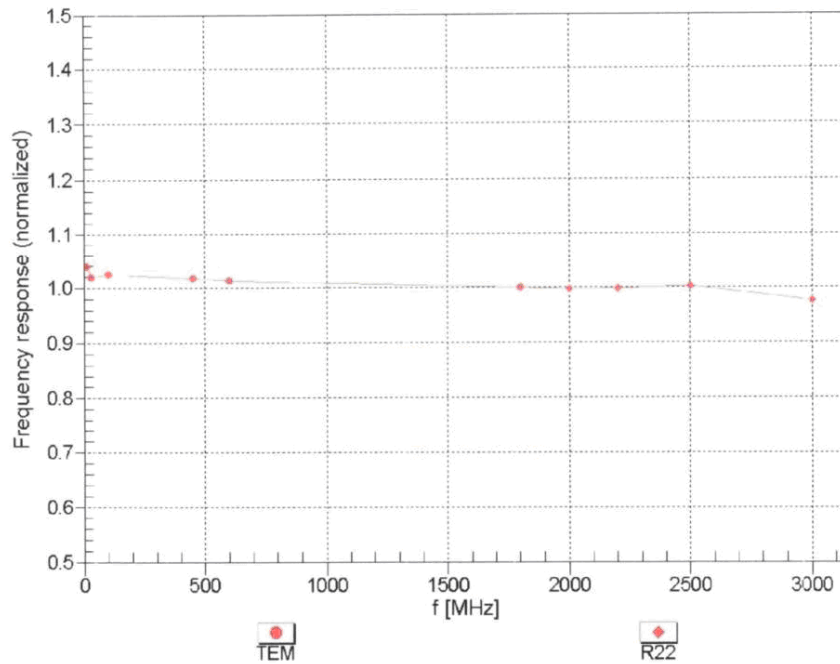
^C Frequency validity of ± 100 MHz only applies for DASY v4.4 and higher (see Page 2), else it is restricted to ± 50 MHz. The uncertainty is the RSS of the ConvF uncertainty at calibration frequency and the uncertainty for the indicated frequency band.

^F At frequencies below 3 GHz, the validity of tissue parameters (ϵ and σ) can be relaxed to ± 10% if liquid compensation formula is applied to measured SAR values. At frequencies above 3 GHz, the validity of tissue parameters (ϵ and σ) is restricted to ± 5%. The uncertainty is the RSS of the ConvF uncertainty for indicated target tissue parameters.

ES3DV3-SN:3292

February 24, 2013

Frequency Response of E-Field (TEM-Cell:ifi110 EXX, Waveguide: R22)



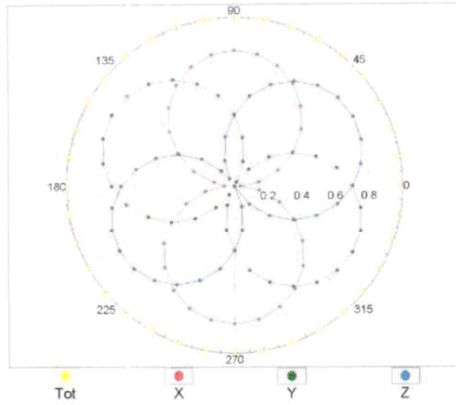
Uncertainty of Frequency Response of E-field: $\pm 6.3\%$ (k=2)

ES3DV3– SN:3292

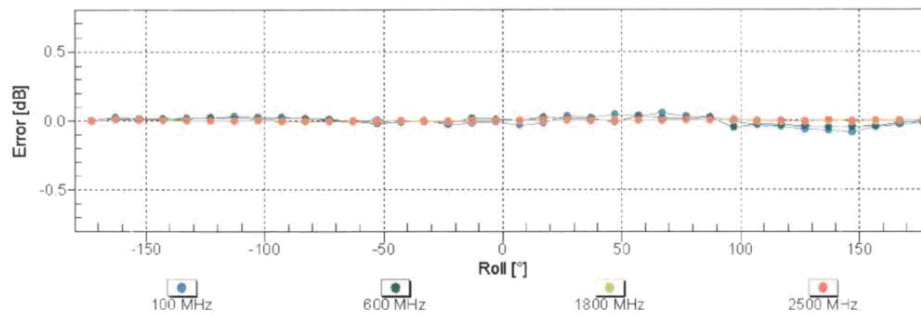
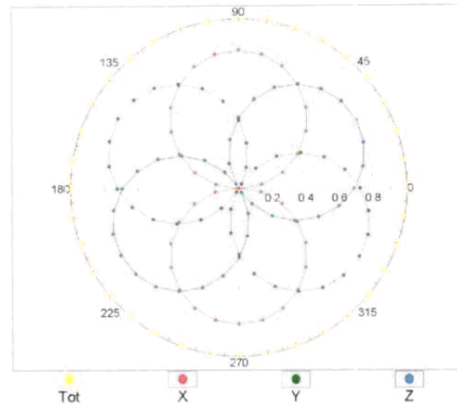
February 24, 2013

Receiving Pattern (ϕ), $\theta = 0^\circ$

f=600 MHz,TEM



f=1800 MHz,R22

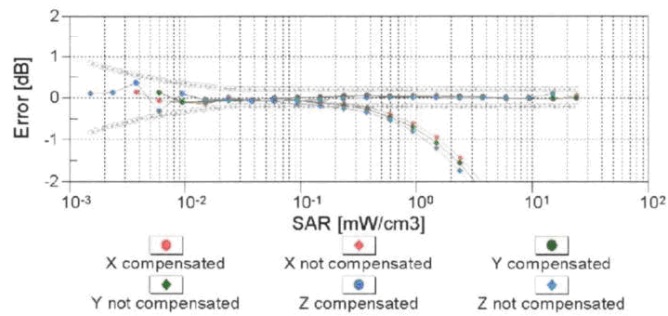
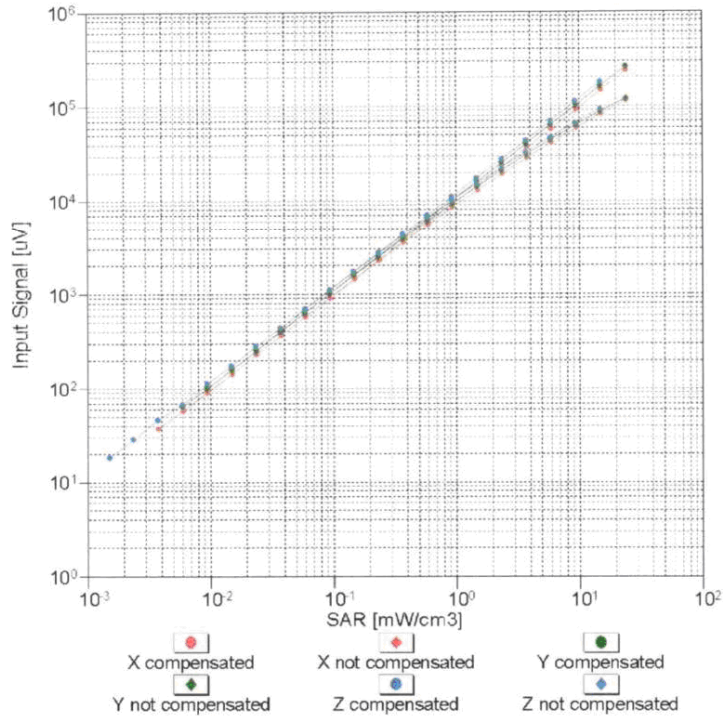


Uncertainty of Axial Isotropy Assessment: $\pm 0.5\%$ (k=2)

ES3DV3- SN:3292

February 24, 2013

Dynamic Range f(SAR_{head}) (TEM cell , f = 900 MHz)

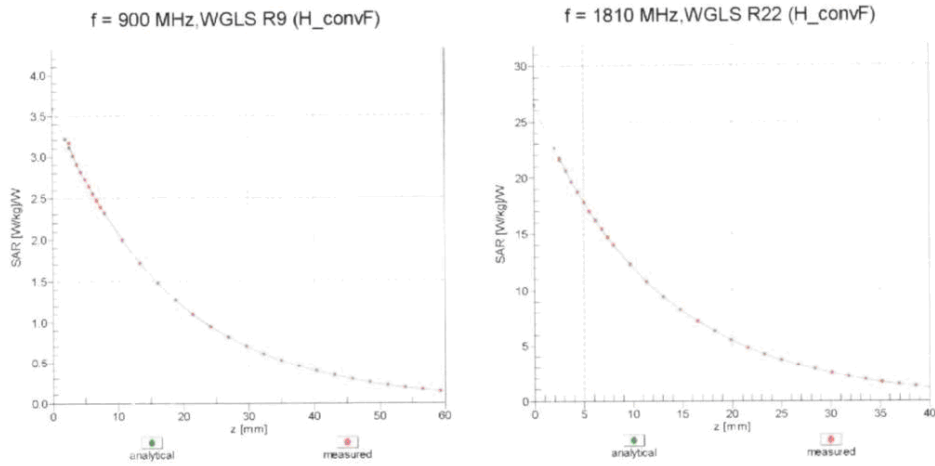


Uncertainty of Linearity Assessment: ± 0.6% (k=2)

ES3DV3-SN:3292

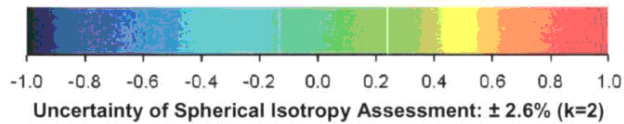
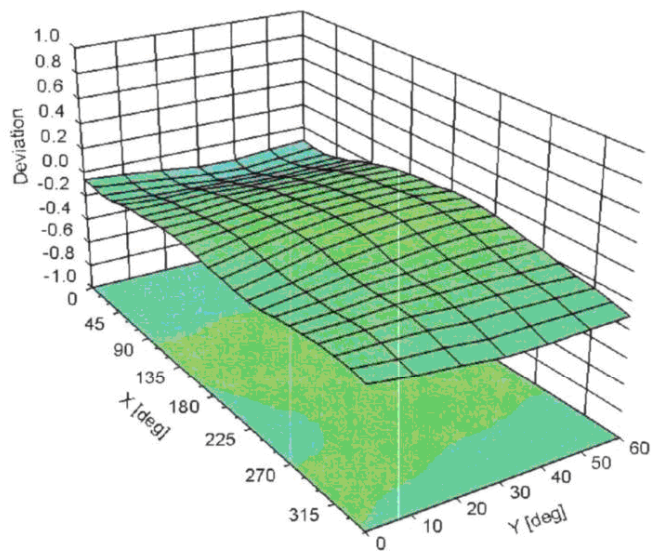
February 24, 2013

Conversion Factor Assessment



Deviation from Isotropy in Liquid

Error (ϕ , θ), f = 900 MHz



ES3DV3- SN:3292

February 24, 2013

DASY/EASY - Parameters of Probe: ES3DV3 - SN:3292**Other Probe Parameters**

Sensor Arrangement	Triangular
Connector Angle (°)	Not applicable
Mechanical Surface Detection Mode	enabled
Optical Surface Detection Mode	disabled
Probe Overall Length	337 mm
Probe Body Diameter	10 mm
Tip Length	10 mm
Tip Diameter	4 mm
Probe Tip to Sensor X Calibration Point	2 mm
Probe Tip to Sensor Y Calibration Point	2 mm
Probe Tip to Sensor Z Calibration Point	2 mm
Recommended Measurement Distance from Surface	3 mm

6.2. D2450V2 Dipole Calibration Certificate

**Calibration Laboratory of
Schmid & Partner
Engineering AG**
Zeughausstrasse 43, 8004 Zurich, Switzerland



S Schweizerischer Kalibrierdienst
C Service suisse d'étalonnage
S Servizio svizzero di taratura
S Swiss Calibration Service

Accredited by the Swiss Accreditation Service (SAS)
The Swiss Accreditation Service is one of the signatories to the EA
Multilateral Agreement for the recognition of calibration certificates

Accreditation No.: **SCS 108**

Client **CIQ SZ (Auden)**

Certificate No: **D2450V2-884_Feb13**

CALIBRATION CERTIFICATE																																															
Object	D2450V2 - SN: 884																																														
Calibration procedure(s)	QA CAL-05.v8 Calibration procedure for dipole validation kits above 700 MHz																																														
Calibration date:	February 29, 2013																																														
<p>This calibration certificate documents the traceability to national standards, which realize the physical units of measurements (SI). The measurements and the uncertainties with confidence probability are given on the following pages and are part of the certificate.</p> <p>All calibrations have been conducted in the closed laboratory facility: environment: temperature (22 ± 3)°C and humidity < 70%.</p> <p>Calibration Equipment used (M&TE critical for calibration)</p> <table border="1"> <thead> <tr> <th>Primary Standards</th> <th>ID #</th> <th>Cal Date (Certificate No.)</th> <th>Scheduled Calibration</th> </tr> </thead> <tbody> <tr> <td>Power meter EPM-442A</td> <td>GB37480704</td> <td>05-Oct-12 (No. 217-01451)</td> <td>Oct-13</td> </tr> <tr> <td>Power sensor HP 8481A</td> <td>US37292783</td> <td>05-Oct-12 (No. 217-01451)</td> <td>Oct-13</td> </tr> <tr> <td>Reference 20 dB Attenuator</td> <td>SN: 5086 (20g)</td> <td>29-Mar-12 (No. 217-01368)</td> <td>Apr-13</td> </tr> <tr> <td>Type-N mismatch combination</td> <td>SN: 5047.2 / 06327</td> <td>29-Mar-12 (No. 217-01371)</td> <td>Apr-13</td> </tr> <tr> <td>Reference Probe ES3DV3</td> <td>SN: 3205</td> <td>30-Dec-12 (No. ES3-3205_Dec12)</td> <td>Dec-13</td> </tr> <tr> <td>DAE4</td> <td>SN: 601</td> <td>04-Jul-12 (No. DAE4-601_Jul12)</td> <td>Jul-13</td> </tr> </tbody> </table> <table border="1"> <thead> <tr> <th>Secondary Standards</th> <th>ID #</th> <th>Check Date (in house)</th> <th>Scheduled Check</th> </tr> </thead> <tbody> <tr> <td>Power sensor HP 8481A</td> <td>MY41092317</td> <td>18-Oct-02 (in house check Oct-12)</td> <td>In house check: Oct-13</td> </tr> <tr> <td>RF generator R&S SMT-C6</td> <td>100005</td> <td>04-Aug-99 (in house check Oct-12)</td> <td>In house check: Oct-13</td> </tr> <tr> <td>Network Analyzer HP 87E3E</td> <td>US37390585 S4206</td> <td>18-Oct-01 (in house check Oct-12)</td> <td>In house check: Oct-13</td> </tr> </tbody> </table>				Primary Standards	ID #	Cal Date (Certificate No.)	Scheduled Calibration	Power meter EPM-442A	GB37480704	05-Oct-12 (No. 217-01451)	Oct-13	Power sensor HP 8481A	US37292783	05-Oct-12 (No. 217-01451)	Oct-13	Reference 20 dB Attenuator	SN: 5086 (20g)	29-Mar-12 (No. 217-01368)	Apr-13	Type-N mismatch combination	SN: 5047.2 / 06327	29-Mar-12 (No. 217-01371)	Apr-13	Reference Probe ES3DV3	SN: 3205	30-Dec-12 (No. ES3-3205_Dec12)	Dec-13	DAE4	SN: 601	04-Jul-12 (No. DAE4-601_Jul12)	Jul-13	Secondary Standards	ID #	Check Date (in house)	Scheduled Check	Power sensor HP 8481A	MY41092317	18-Oct-02 (in house check Oct-12)	In house check: Oct-13	RF generator R&S SMT-C6	100005	04-Aug-99 (in house check Oct-12)	In house check: Oct-13	Network Analyzer HP 87E3E	US37390585 S4206	18-Oct-01 (in house check Oct-12)	In house check: Oct-13
Primary Standards	ID #	Cal Date (Certificate No.)	Scheduled Calibration																																												
Power meter EPM-442A	GB37480704	05-Oct-12 (No. 217-01451)	Oct-13																																												
Power sensor HP 8481A	US37292783	05-Oct-12 (No. 217-01451)	Oct-13																																												
Reference 20 dB Attenuator	SN: 5086 (20g)	29-Mar-12 (No. 217-01368)	Apr-13																																												
Type-N mismatch combination	SN: 5047.2 / 06327	29-Mar-12 (No. 217-01371)	Apr-13																																												
Reference Probe ES3DV3	SN: 3205	30-Dec-12 (No. ES3-3205_Dec12)	Dec-13																																												
DAE4	SN: 601	04-Jul-12 (No. DAE4-601_Jul12)	Jul-13																																												
Secondary Standards	ID #	Check Date (in house)	Scheduled Check																																												
Power sensor HP 8481A	MY41092317	18-Oct-02 (in house check Oct-12)	In house check: Oct-13																																												
RF generator R&S SMT-C6	100005	04-Aug-99 (in house check Oct-12)	In house check: Oct-13																																												
Network Analyzer HP 87E3E	US37390585 S4206	18-Oct-01 (in house check Oct-12)	In house check: Oct-13																																												
Calibrated by:	Name Israe El-Naouq	Function Laboratory Technician	Signature 																																												
Approved by:	Katja Pokovic	Technical Manager																																													
			Issued: February 29, 2013																																												
This calibration certificate shall not be reproduced except in full without written approval of the laboratory.																																															

Calibration Laboratory of
Schmid & Partner
Engineering AG
Zeughausstrasse 43, 8004 Zurich, Switzerland



S Schweizerischer Kalibrierdienst
C Service suisse d'étalonnage
S Servizio svizzero di taratura
S Swiss Calibration Service

Accredited by the Swiss Accreditation Service (SAS)

Accreditation No.: **SCS 108**

The Swiss Accreditation Service is one of the signatories to the EA
Multilateral Agreement for the recognition of calibration certificates

Glossary:

TSL	tissue simulating liquid
ConvF	sensitivity in TSL / NORM x,y,z
N/A	not applicable or not measured

Calibration is Performed According to the Following Standards:

- IEEE Std 1528-2003, "IEEE Recommended Practice for Determining the Peak Spatial-Averaged Specific Absorption Rate (SAR) in the Human Head from Wireless Communications Devices: Measurement Techniques", December 2003
- IEC 62209-1, "Procedure to measure the Specific Absorption Rate (SAR) for hand-held devices used in close proximity to the ear (frequency range of 300 MHz to 3 GHz)", February 2005
- Federal Communications Commission Office of Engineering & Technology (FCC OET), "Evaluating Compliance with FCC Guidelines for Human Exposure to Radiofrequency Electromagnetic Fields; Additional Information for Evaluating Compliance of Mobile and Portable Devices with FCC Limits for Human Exposure to Radiofrequency Emissions", Supplement C (Edition 01-01) to Bulletin 65

Additional Documentation:

- DASY4/5 System Handbook

Methods Applied and Interpretation of Parameters:

- Measurement Conditions:* Further details are available from the Validation Report at the end of the certificate. All figures stated in the certificate are valid at the frequency indicated.
- Antenna Parameters with TSL:* The dipole is mounted with the spacer to position its feed point exactly below the center marking of the flat phantom section, with the arms oriented parallel to the body axis.
- Feed Point Impedance and Return Loss:* These parameters are measured with the dipole positioned under the liquid filled phantom. The impedance stated is transformed from the measurement at the SMA connector to the feed point. The Return Loss ensures low reflected power. No uncertainty required.
- Electrical Delay:* One-way delay between the SMA connector and the antenna feed point. No uncertainty required.
- SAR measured:* SAR measured at the stated antenna input power.
- SAR normalized:* SAR as measured, normalized to an input power of 1 W at the antenna connector.
- SAR for nominal TSL parameters:* The measured TSL parameters are used to calculate the nominal SAR result.

Measurement Conditions

DASY system configuration, as far as not given on page 1.

DASY Version	DASY5	V52.8.0
Extrapolation	Advanced Extrapolation	
Phantom	Modular Flat Phantom	
Distance Dipole Center - TSL	10 mm	with Spacer
Zoom Scan Resolution	dx, dy, dz = 5 mm	
Frequency	2450 MHz \pm 1 MHz	

Head TSL parameters

The following parameters and calculations were applied.

	Temperature	Permittivity	Conductivity
Nominal Head TSL parameters	22.0 °C	39.2	1.80 mho/m
Measured Head TSL parameters	(22.0 \pm 0.2) °C	38.9 \pm 6 %	1.86 mho/m \pm 6 %
Head TSL temperature change during test	< 0.5 °C	----	----

SAR result with Head TSL

SAR averaged over 1 cm ³ (1 g) of Head TSL	Condition	
SAR measured	250 mW input power	13.7 mW / g
SAR for nominal Head TSL parameters	normalized to 1W	53.9 mW / g \pm 17.0 % (k=2)

SAR averaged over 10 cm ³ (10 g) of Head TSL	condition	
SAR measured	250 mW input power	6.36 mW / g
SAR for nominal Head TSL parameters	normalized to 1W	25.2 mW / g \pm 16.5 % (k=2)

Body TSL parameters

The following parameters and calculations were applied.

	Temperature	Permittivity	Conductivity
Nominal Body TSL parameters	22.0 °C	52.7	1.95 mho/m
Measured Body TSL parameters	(22.0 \pm 0.2) °C	52.3 \pm 6 %	2.02 mho/m \pm 6 %
Body TSL temperature change during test	< 0.5 °C	----	----

SAR result with Body TSL

SAR averaged over 1 cm ³ (1 g) of Body TSL	Condition	
SAR measured	250 mW input power	12.8 mW / g
SAR for nominal Body TSL parameters	normalized to 1W	50.3 mW / g \pm 17.0 % (k=2)

SAR averaged over 10 cm ³ (10 g) of Body TSL	condition	
SAR measured	250 mW input power	5.98 mW / g
SAR for nominal Body TSL parameters	normalized to 1W	23.7 mW / g \pm 16.5 % (k=2)

Appendix**Antenna Parameters with Head TSL**

Impedance, transformed to feed point	53.7 Ω + 2.1 j Ω
Return Loss	- 27.7 dB

Antenna Parameters with Body TSL

Impedance, transformed to feed point	50.7 Ω + 3.7 j Ω
Return Loss	- 28.6 dB

General Antenna Parameters and Design

Electrical Delay (one direction)	1.159 ns
----------------------------------	----------

After long term use with 100W radiated power, only a slight warming of the dipole near the feedpoint can be measured.

The dipole is made of standard semirigid coaxial cable. The center conductor of the feeding line is directly connected to the second arm of the dipole. The antenna is therefore short-circuited for DC-signals. On some of the dipoles, small end caps are added to the dipole arms in order to improve matching when loaded according to the position as explained in the "Measurement Conditions" paragraph. The SAR data are not affected by this change. The overall dipole length is still according to the Standard.

No excessive force must be applied to the dipole arms, because they might bend or the soldered connections near the feedpoint may be damaged.

Additional EUT Data

Manufactured by	SPEAG
Manufactured on	October 06, 2011

DASY5 Validation Report for Head TSL

Date: 29.02.2013

Test Laboratory: SPEAG, Zurich, Switzerland

DUT: Dipole 2450 MHz; Type: D2450V2; Serial: D2450V2 - SN: 884

Communication System: CW; Frequency: 2450 MHz

Medium parameters used: $f = 2450$ MHz; $\sigma = 1.86$ mho/m; $\epsilon_r = 38.9$; $\rho = 1000$ kg/m³

Phantom section: Flat Section

Measurement Standard: DASY5 (IEEE/IEC/ANSI C63.19-2007)

DASY52 Configuration:

- Probe: ES3DV3 - SN3205; ConvF(4.45, 4.45, 4.45); Calibrated: 30.12.2012
- Sensor-Surface: 3mm (Mechanical Surface Detection)
- Electronics: DAE4 Sn601; Calibrated: 04.07.2012
- Phantom: Flat Phantom 5.0 (front); Type: QD000P50AA; Serial: 1001
- DASY52 52.8.0(692); SEMCAD X 14.6.4(4989)

Dipole Calibration for Head Tissue/Pin=250 mW, d=10mm/Zoom Scan (7x7x7)/Cube 0:

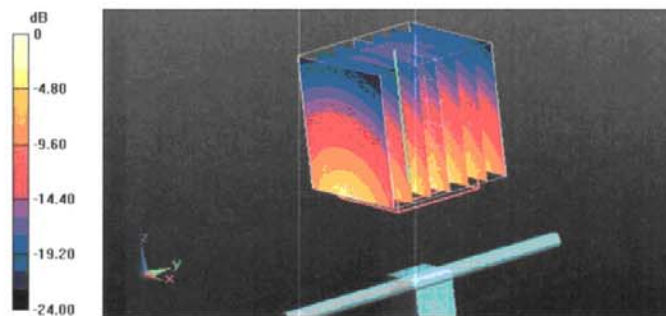
Measurement grid: dx=5mm, dy=5mm, dz=5mm

Reference Value = 100.8 V/m; Power Drift = 0.06 dB

Peak SAR (extrapolated) = 28.4450

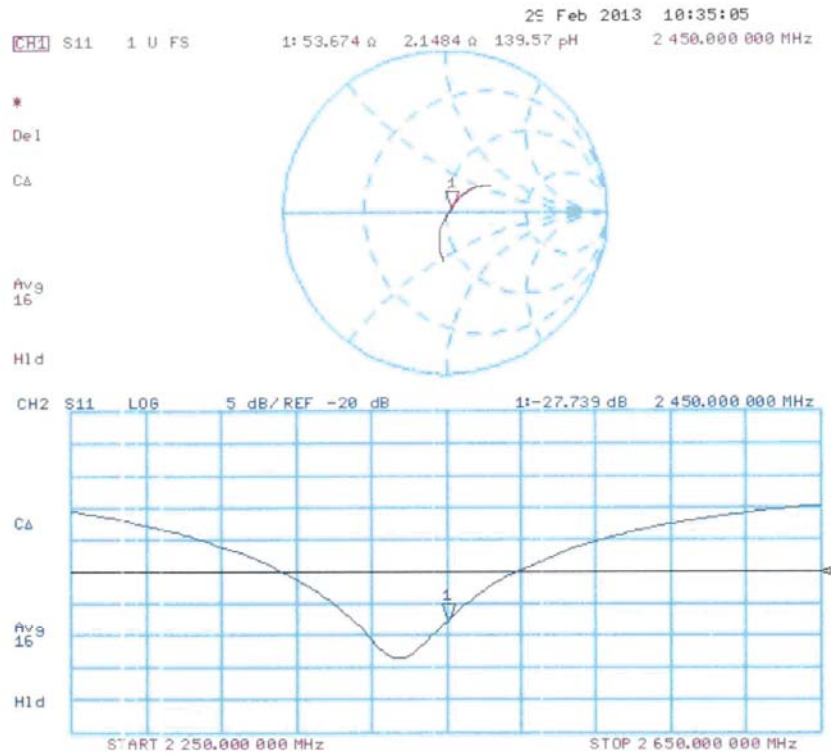
SAR(1 g) = 13.7 mW/g; SAR(10 g) = 6.36 mW/g

Maximum value of SAR (measured) = 17.648 mW/g



0 dB = 17.650mW/g = 24.93 dB mW/g

Impedance Measurement Plot for Head TSL



DASY5 Validation Report for Body TSL

Date: 29.02.2013

Test Laboratory: SPEAG, Zurich, Switzerland

DUT: Dipole 2450 MHz; Type: D2450V2; Serial: D2450V2 - SN: 884

Communication System: CW; Frequency: 2450 MHz

Medium parameters used: $f = 2450$ MHz; $\sigma = 2.02$ mho/m; $\epsilon_r = 52.3$; $\rho = 1000$ kg/m³

Phantom section: Flat Section

Measurement Standard: DASY5 (IEEE/IEC/ANSI C63.19-2007)

DASY52 Configuration:

- Probe: ES3DV3 - SN3205; ConvF(4.26, 4.26, 4.26); Calibrated: 30.12.2012
- Sensor-Surface: 3mm (Mechanical Surface Detection)
- Electronics: DAE4 Sn601; Calibrated: 04.07.2012
- Phantom: Flat Phantom 5.0 (back); Type: QD000P50AA; Serial: 1002
- DASY52 52.8.0(692); SEMCAD X 14.6.4(4989)

Dipole Calibration for Body Tissue/Pin=250 mW, d=10mm/Zoom Scan (7x7x7)/Cube 0:

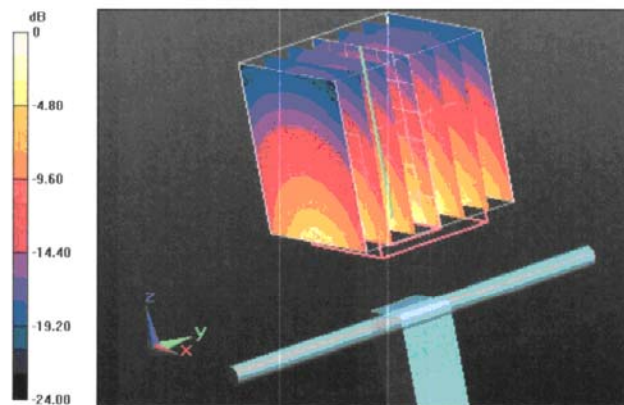
Measurement grid: dx=5mm, dy=5mm, dz=5mm

Reference Value = 94.956 V/m; Power Drift = 0.0027 dB

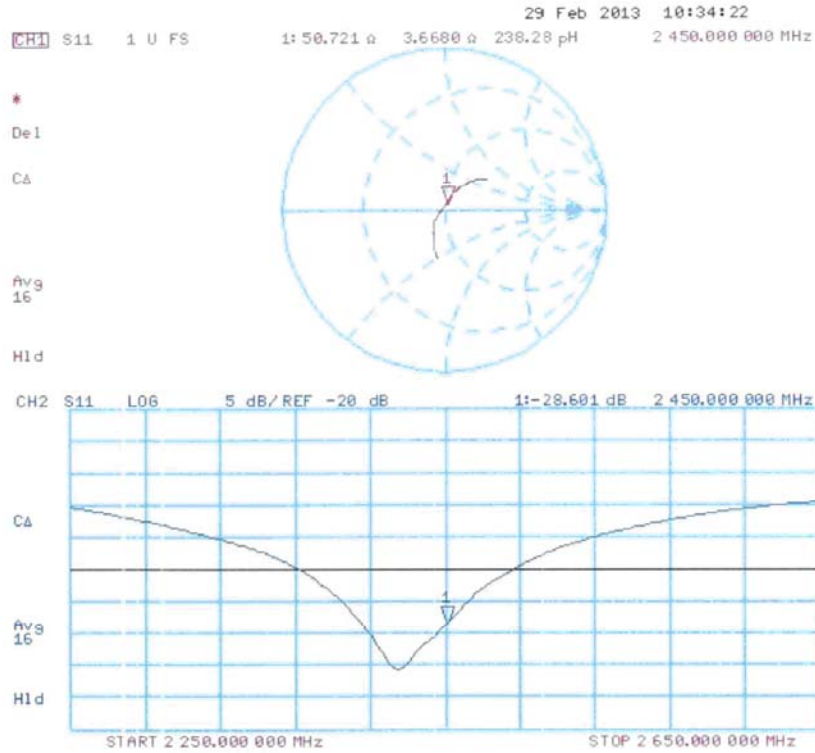
Peak SAR (extrapolated) = 26.2360

SAR(1 g) = 12.8 mW/g; SAR(10 g) = 5.98 mW/g

Maximum value of SAR (measured) = 16.972 mW/g



Impedance Measurement Plot for Body TSL



6.3. DAE4 Calibration Certificate

**Calibration Laboratory of
Schmid & Partner
Engineering AG**
Zeughausstrasse 43, 8004 Zurich, Switzerland



S Schweizerischer Kalibrierdienst
S Service suisse d'étalonnage
C Servizio svizzero di taratura
S Swiss Calibration Service

Accredited by the Swiss Accreditation Service (SAS)
The Swiss Accreditation Service is one of the signatories to the EA
Multilateral Agreement for the recognition of calibration certificates

Accreditation No.: **SCS 108**

Client **CIQ SZ (Auden)**

Certificate No: **DAE4-1315_Feb13**

CALIBRATION CERTIFICATE

Object **DAE4 - SD 000 D04 BJ - SN: 1315**

Calibration procedure(s) **QA CAL-06.v24
Calibration procedure for the data acquisition electronics (DAE)**

Calibration date: **February 27, 2013**

This calibration certificate documents the traceability to national standards, which realize the physical units of measurements (SI).
The measurements and the uncertainties with confidence probability are given on the following pages and are part of the certificate.

All calibrations have been conducted in the closed laboratory facility: environment temperature (22 ± 3)°C and humidity < 70%.

Calibration Equipment used (M&TE critical for calibration)

Primary Standards	ID #	Cal Date (Certificate No.)	Scheduled Calibration
Keithley Multimeter Type 2001	SN: 0810278	28-Sep-12 (No:11450)	Sep-13
Secondary Standards	ID #	Check Date (in house)	Scheduled Check
Calibrator Box V2.1	SE UWS 053 AA 1001	05-Jan-12 (in house check)	In house check: Jan-13

Calibrated by: Name **Andrea Guntli** Function **Technician** Signature

Approved by: Name **Fin Bomholt** Function **R&D Director** Signature

Issued: February 27, 2013

This calibration certificate shall not be reproduced except in full without written approval of the laboratory.

**Calibration Laboratory of
Schmid & Partner
Engineering AG**
Zeughausstrasse 43, 8004 Zurich, Switzerland



S Schweizerischer Kalibrierdienst
C Service suisse d'étalonnage
S Servizio svizzero di taratura
S Swiss Calibration Service

Accredited by the Swiss Accreditation Service (SAS)
The Swiss Accreditation Service is one of the signatories to the EA
Multilateral Agreement for the recognition of calibration certificates

Accreditation No.: **SCS 108**

Glossary

DAE data acquisition electronics
Connector angle information used in DASY system to align probe sensor X to the robot coordinate system.

Methods Applied and Interpretation of Parameters

- *DC Voltage Measurement*: Calibration Factor assessed for use in DASY system by comparison with a calibrated instrument traceable to national standards. The figure given corresponds to the full scale range of the voltmeter in the respective range.
- *Connector angle*: The angle of the connector is assessed measuring the angle mechanically by a tool inserted. Uncertainty is not required.
- The following parameters as documented in the Appendix contain technical information as a result from the performance test and require no uncertainty.
 - *DC Voltage Measurement Linearity*: Verification of the Linearity at +10% and -10% of the nominal calibration voltage. Influence of offset voltage is included in this measurement.
 - *Common mode sensitivity*: Influence of a positive or negative common mode voltage on the differential measurement.
 - *Channel separation*: Influence of a voltage on the neighbor channels not subject to an input voltage.
 - *AD Converter Values with inputs shorted*: Values on the internal AD converter corresponding to zero input voltage
 - *Input Offset Measurement*: Output voltage and statistical results over a large number of zero voltage measurements.
 - *Input Offset Current*: Typical value for information; Maximum channel input offset current, not considering the input resistance.
 - *Input resistance*: Typical value for information: DAE input resistance at the connector, during internal auto-zeroing and during measurement.
 - *Low Battery Alarm Voltage*: Typical value for information. Below this voltage, a battery alarm signal is generated.
 - *Power consumption*: Typical value for information. Supply currents in various operating modes.

DC Voltage Measurement

A/D - Converter Resolution nominal

High Range: 1LSB = 6.1 μ V, full range = -100...+300 mV

Low Range: 1LSB = 61nV, full range = -1.....+3mV

DASY measurement parameters: Auto Zero Time: 3 sec; Measuring time: 3 sec

Calibration Factors	X	Y	Z
High Range	405.194 \pm 0.1% (k=2)	405.031 \pm 0.1% (k=2)	405.006 \pm 0.1% (k=2)
Low Range	4.00179 \pm 0.7% (k=2)	3.99504 \pm 0.7% (k=2)	4.00535 \pm 0.7% (k=2)

Connector Angle

Connector Angle to be used in DASY system	20.0 $^{\circ}$ \pm 1 $^{\circ}$
---	------------------------------------

Appendix

1. DC Voltage Linearity

High Range	Reading (μV)	Difference (μV)	Error (%)
Channel X + Input	199993.07	-0.46	-0.00
Channel X + Input	19998.21	0.29	0.00
Channel X - Input	-19997.04	5.94	-0.03
Channel Y + Input	199992.78	-1.05	-0.00
Channel Y + Input	19995.99	-1.88	-0.01
Channel Y - Input	-20001.41	1.50	-0.01
Channel Z + Input	199996.23	3.02	0.00
Channel Z + Input	19996.75	-0.72	-0.00
Channel Z - Input	-20003.50	-0.24	0.00

Low Range	Reading (μV)	Difference (μV)	Error (%)
Channel X + Input	1999.32	-1.73	-0.09
Channel X + Input	200.22	-1.03	-0.51
Channel X - Input	-198.55	0.32	-0.16
Channel Y + Input	1997.53	-3.28	-0.16
Channel Y + Input	199.64	-1.21	-0.60
Channel Y - Input	-199.77	-0.78	0.39
Channel Z + Input	1997.90	-2.04	-0.10
Channel Z + Input	199.23	-1.21	-0.61
Channel Z - Input	-200.63	-1.12	0.56

2. Common mode sensitivity

DASY measurement parameters: Auto Zero Time: 3 sec; Measuring time: 3 sec

	Common mode Input Voltage (mV)	High Range Average Reading (μV)	Low Range Average Reading (μV)
Channel X	200	-1.10	-3.09
	- 200	4.35	3.23
Channel Y	200	-22.09	-22.46
	- 200	21.74	22.31
Channel Z	200	-4.46	-4.92
	- 200	3.65	2.86

3. Channel separation

DASY measurement parameters: Auto Zero Time: 3 sec; Measuring time: 3 sec

	Input Voltage (mV)	Channel X (μV)	Channel Y (μV)	Channel Z (μV)
Channel X	200	-	-2.62	-3.29
Channel Y	200	6.73	-	-2.17
Channel Z	200	8.11	5.38	-

4. AD-Converter Values with inputs shorted

DASY measurement parameters: Auto Zero Time: 3 sec; Measuring time: 3 sec

	High Range (LSB)	Low Range (LSB)
Channel X	16132	15682
Channel Y	16251	15151
Channel Z	15551	15659

5. Input Offset Measurement

DASY measurement parameters: Auto Zero Time: 3 sec; Measuring time: 3 sec

Input 10M Ω

	Average (μ V)	min. Offset (μ V)	max. Offset (μ V)	Std. Deviation (μ V)
Channel X	1.32	0.22	2.38	0.46
Channel Y	-1.23	-2.04	-0.58	0.36
Channel Z	-1.89	-3.56	-1.12	0.39

6. Input Offset Current

Nominal Input circuitry offset current on all channels: <25fA

7. Input Resistance (Typical values for information)

	Zeroing (kOhm)	Measuring (MOhm)
Channel X	200	200
Channel Y	200	200
Channel Z	200	200

8. Low Battery Alarm Voltage (Typical values for information)

Typical values	Alarm Level (VDC)
Supply (+ Vcc)	+7.9
Supply (- Vcc)	-7.6

9. Power Consumption (Typical values for information)

Typical values	Switched off (mA)	Stand by (mA)	Transmitting (mA)
Supply (+ Vcc)	+0.01	+6	+14
Supply (- Vcc)	-0.01	-8	-9

7. Test Setup Photos



Photograph of the depth in the Body Phantom (2450MHz)



0mm Body-worn Rear Side Setup Photo



0mm Body-worn Right Side Setup Photo

8. External Photos of the EUT

External Photos







.....End of Report.....