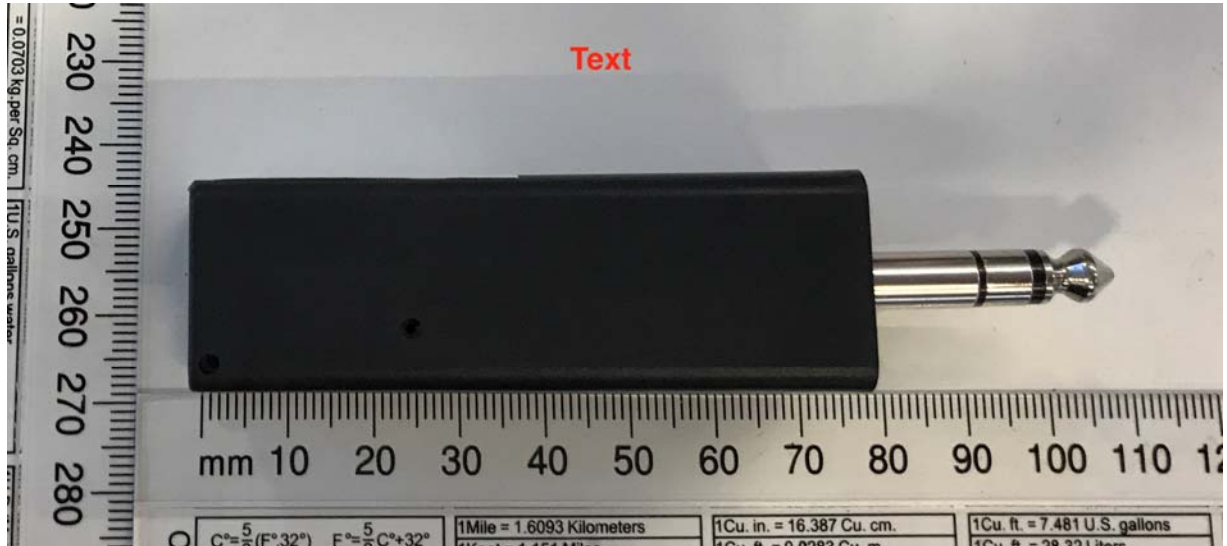


## External Photos Showing All Six Sides

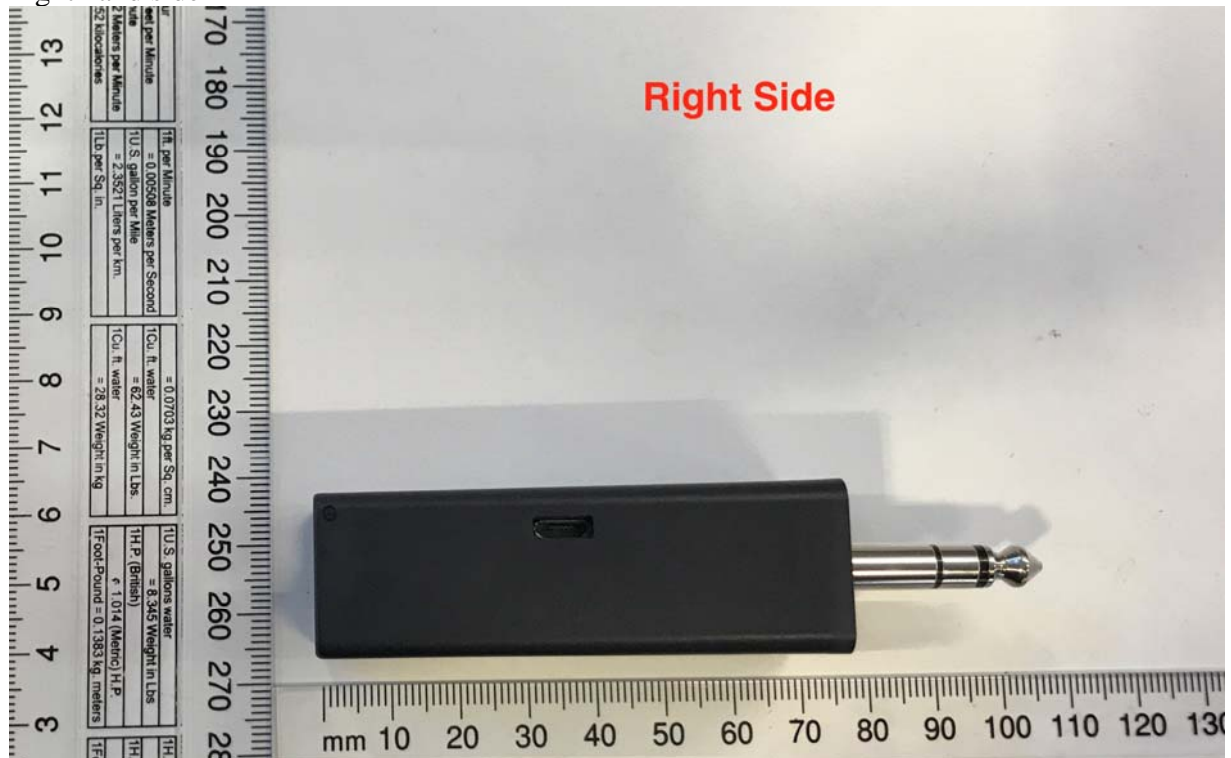
### Left Hand Side



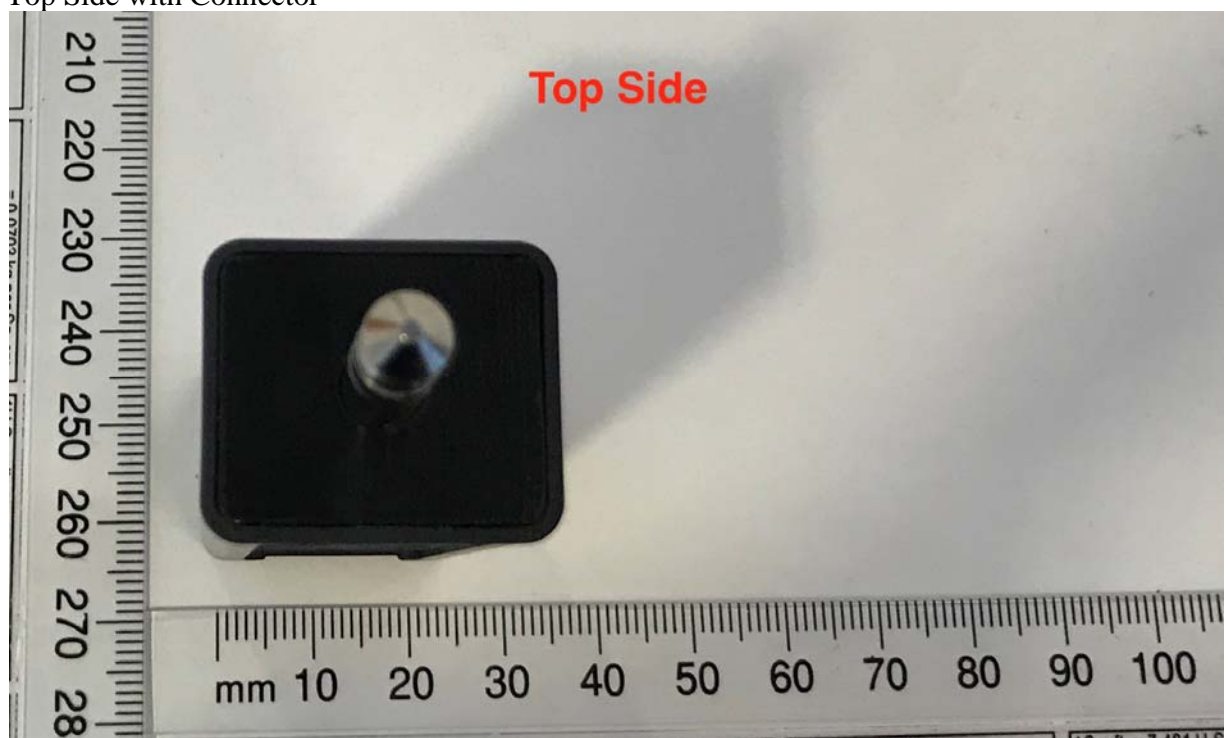
### Rear Side



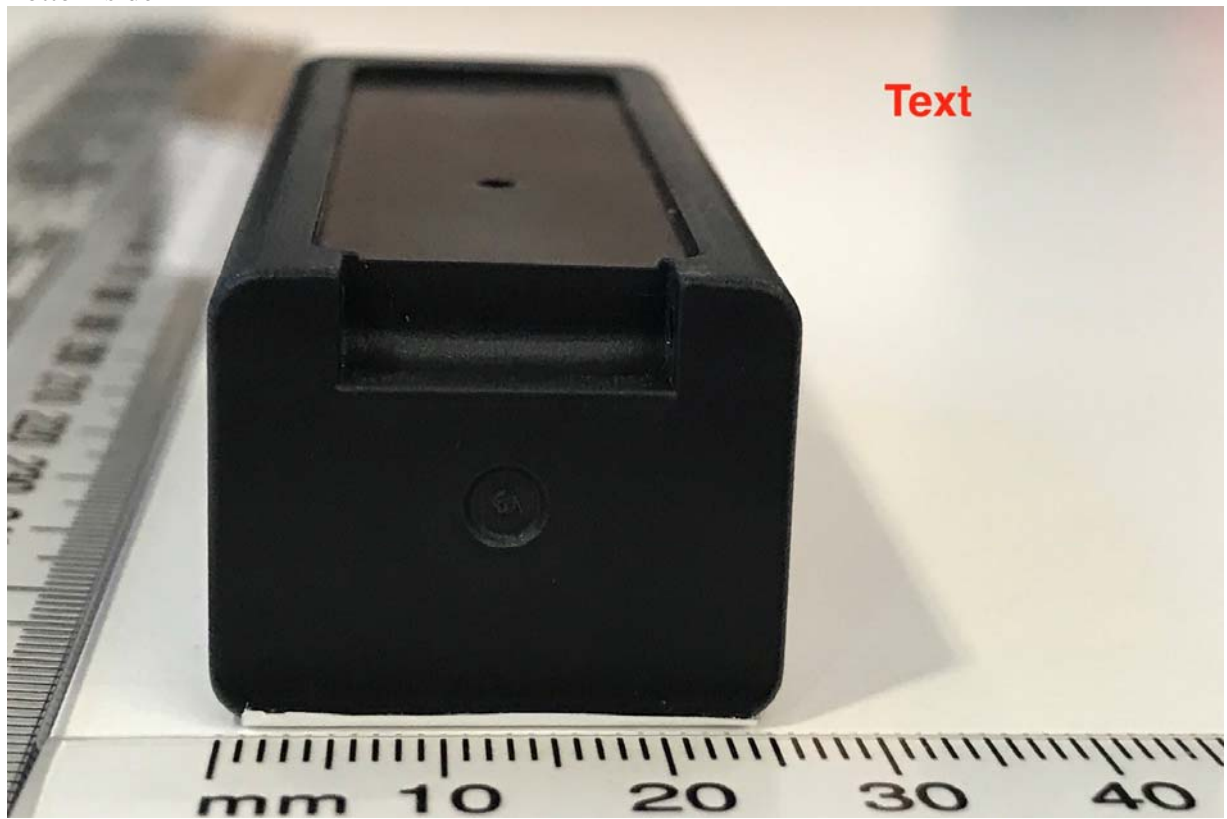
Right hand side



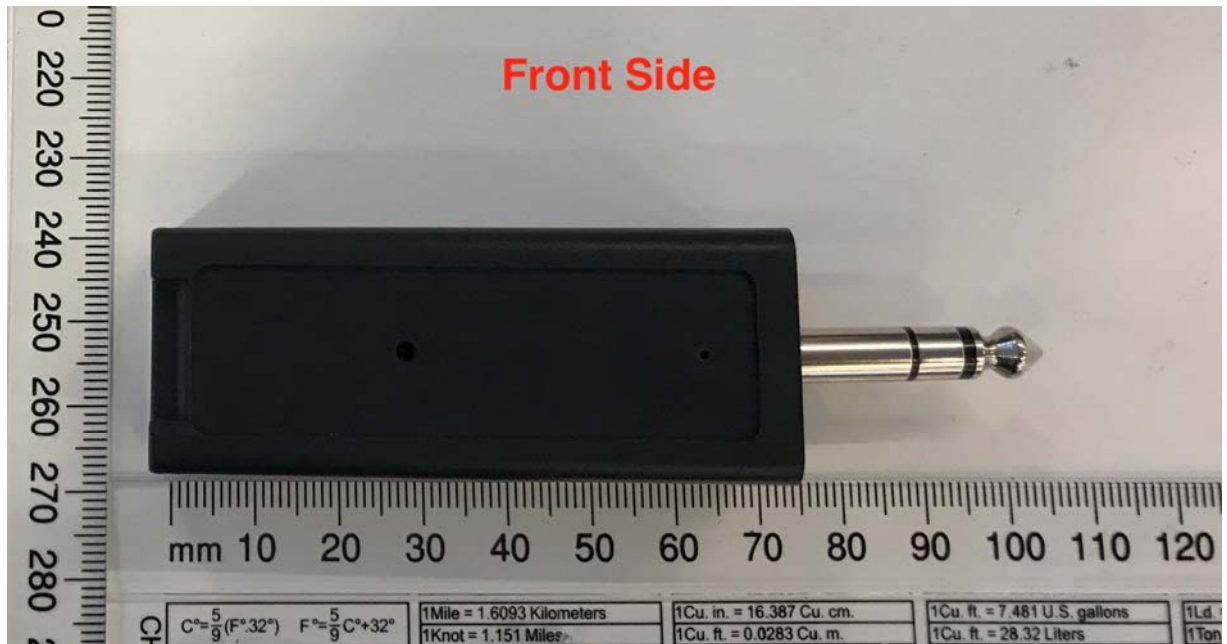
Top Side with Connector



Bottom side



Front side



## 10. PHOTOGRAPHS

External photo and label





NB: The device has a completely black rectangular plastic enclosure.

All sides are identical being black plastic except the bottom connector face and the face with the label.

The left hand side face being completely black is representative of all of the other faces.