

Test Graphs



2DH5_Ant1_2402



2DH5_Ant1_2441



2DH5_Ant1_2480



3DH5_Ant1_2402



3DH5_Ant1_2441



3DH5_Ant1_2480



Appendix C: Carrier frequency separation
 Test Result

Test Mode	Antenna	Freq(MHz)	Result[MHz]	Limit[MHz]	Verdict
DH5	Ant1	2402	1.017	≥0.888	PASS
		2441	0.987	≥0.888	PASS
		2480	1.02	≥0.888	PASS
2DH5	Ant1	2402	1.05	≥0.882	PASS
		2441	1.035	≥0.882	PASS
		2480	1.149	≥0.882	PASS
3DH5	Ant1	2402	1.005	≥0.854	PASS
		2441	1.158	≥0.854	PASS
		2480	1.014	≥0.854	PASS

Test Graphs



2DH5_Ant1_2402



2DH5_Ant1_2441



2DH5_Ant1_2480



3DH5_Ant1_2402



3DH5_Ant1_2441



3DH5_Ant1_2480



Appendix D: Number of hopping channels
 Test Result

Test Mode	Antenna	Freq(MHz)	Result[Num]	Limit[Num]	Verdict
DH5	Ant1	Hop	79	≥15	PASS
2DH5	Ant1	Hop	79	≥15	PASS
3DH5	Ant1	Hop	79	≥15	PASS

Test Graphs



Appendix E: Time of occupancy Test Result

Test Mode	Antenna	Freq(MHz)	Burst Width [ms]	Total Hops [Num]	Result[s]	Limit[s]	Verdict
DH1	Ant1	Hop	0.41	320	0.131	≤0.4	PASS
DH3	Ant1	Hop	1.65	160	0.264	≤0.4	PASS
DH5	Ant1	Hop	2.90	106.67	0.309	≤0.4	PASS
2DH1	Ant1	Hop	0.42	320	0.135	≤0.4	PASS
2DH3	Ant1	Hop	1.66	160	0.266	≤0.4	PASS
2DH5	Ant1	Hop	2.90	106.67	0.309	≤0.4	PASS
3DH1	Ant1	Hop	0.42	320	0.135	≤0.4	PASS
3DH3	Ant1	Hop	1.66	160	0.266	≤0.4	PASS
3DH5	Ant1	Hop	2.90	106.67	0.309	≤0.4	PASS

Test Graphs



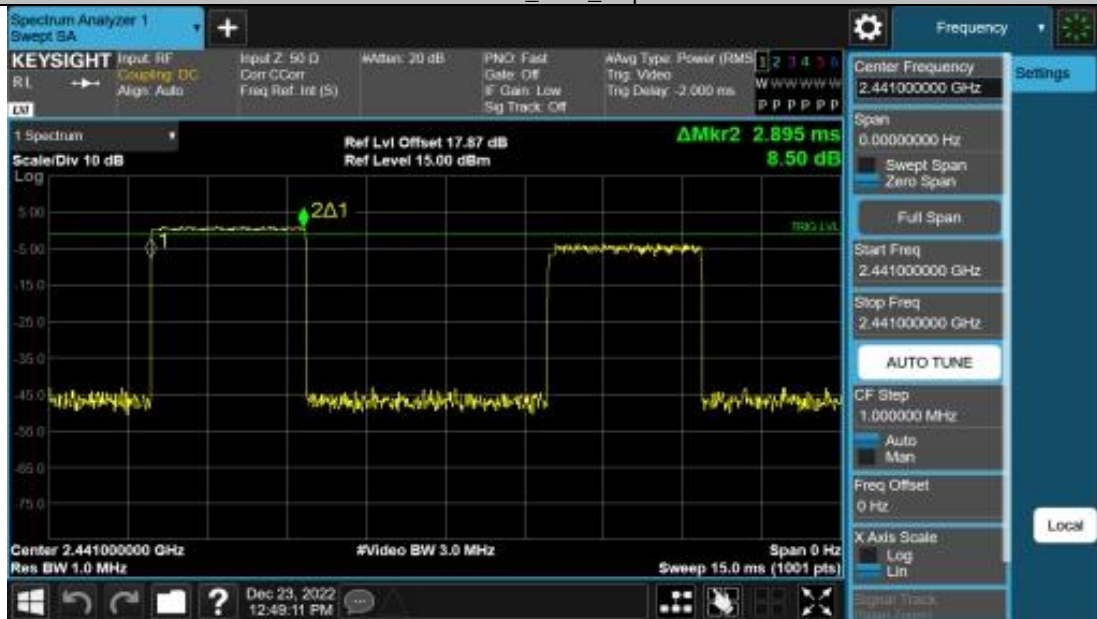
2DH1_Ant1_Hop



2DH3_Ant1_Hop



2DH5_Ant1_Hop



3DH1_Ant1_Hop



3DH3_Ant1_Hop



3DH5_Ant1_Hop



Appendix F: Reference level measurement
 Test Result

Test Mode	Antenna	Freq(MHz)	Max.Point[MHz]	Result[dBm]
DH5	Ant1	2402	2401.93	2.10
		2441	2440.95	3.08
		2480	2479.78	3.65
2DH5	Ant1	2402	2401.81	-2.51
		2441	2440.95	0.19
		2480	2480.11	0.80
3DH5	Ant1	2402	2401.77	-1.41
		2441	2440.77	0.38
		2480	2479.77	1.23

Test Graphs



2DH5_Ant1_2402



2DH5_Ant1_2441



2DH5_Ant1_2480



3DH5_Ant1_2402



3DH5_Ant1_2441



3DH5_Ant1_2480



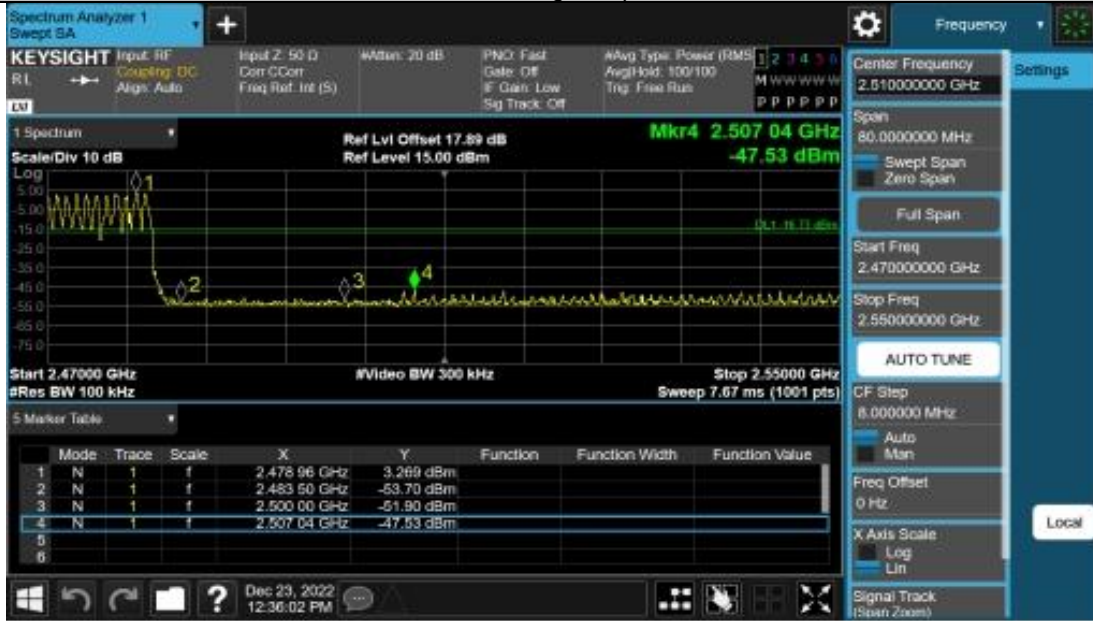
Appendix G: Band edge measurements Test Result

Test Mode	Antenna	Ch Name	Freq(MHz)	Ref Level [dBm]	Result [dBm]	Limit [dBm]	Verdict
DH5	Ant1	Low	2402	2.10	-44.9	≤-17.9	PASS
		High	2480	3.65	-51.52	≤-16.35	PASS
		Low	Hop_2402	2.62	-51.56	≤-17.38	PASS
		High	Hop_2480	3.27	-47.53	≤-16.73	PASS
2DH5	Ant1	Low	2402	-2.51	-50.64	≤-22.51	PASS
		High	2480	0.80	-50.74	≤-19.2	PASS
		Low	Hop_2402	-0.85	-52.06	≤-20.85	PASS
		High	Hop_2480	-1.87	-49.74	≤-21.87	PASS
3DH5	Ant1	Low	2402	-1.41	-51.17	≤-21.41	PASS
		High	2480	1.23	-52.07	≤-18.77	PASS
		Low	Hop_2402	-4.12	-51.79	≤-24.12	PASS
		High	Hop_2480	0.87	-48.07	≤-19.13	PASS

Test Graphs



DH5_Ant1_High_Hop_2480



2DH5_Ant1_Low_2402



2DH5_Ant1_High 2480



2DH5_Ant1_Low_Hop_2402



2DH5_Ant1_High_Hop_2480



3DH5_Ant1_Low_2402



3DH5_Ant1_High_2480



3DH5_Ant1_Low_Hop_2402



3DH5_Ant1_High_Hop_2480



Appendix H: Conducted Spurious Emission Test Result

Test Mode	Antenna	Freq(MHz)	Freq Range [MHz]	Ref Level [dBm]	Result [dBm]	Limit [dBm]	Verdict
DH5	Ant1	2402	30~26500	2.10	-43.35	≤-17.9	PASS
		2441	30~26500	3.08	-42.45	≤-16.92	PASS
		2480	30~26500	3.65	-43.16	≤-16.35	PASS
2DH5	Ant1	2402	30~26500	-2.51	-42.85	≤-22.51	PASS
		2441	30~26500	0.19	-43.6	≤-19.81	PASS
		2480	30~26500	0.80	-43.23	≤-19.2	PASS
3DH5	Ant1	2402	30~26500	-1.41	-42.57	≤-21.41	PASS
		2441	30~26500	0.38	-43.03	≤-19.62	PASS
		2480	30~26500	1.23	-33.95	≤-18.77	PASS

Test Graphs



2DH5_Ant1_2402_30~26500



2DH5_Ant1_2441_30~26500



2DH5_Ant1_2480_30~26500



3DH5_Ant1_2402_30~26500



3DH5_Ant1_2441_30~26500

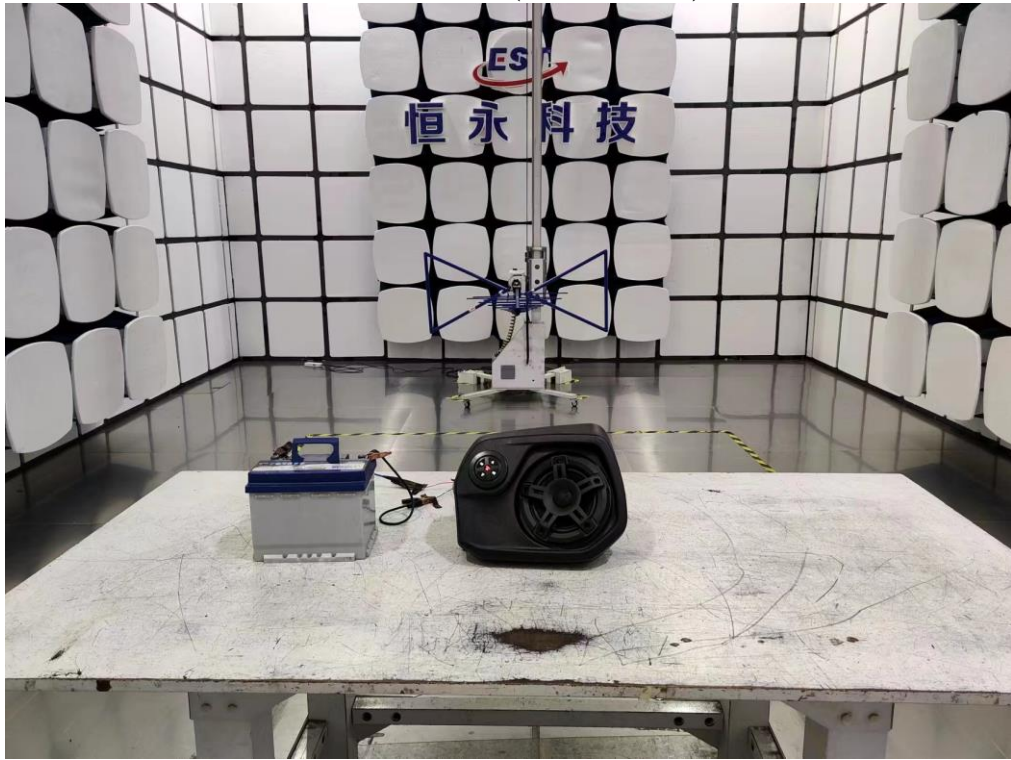


3DH5_Ant1_2480_30~26500

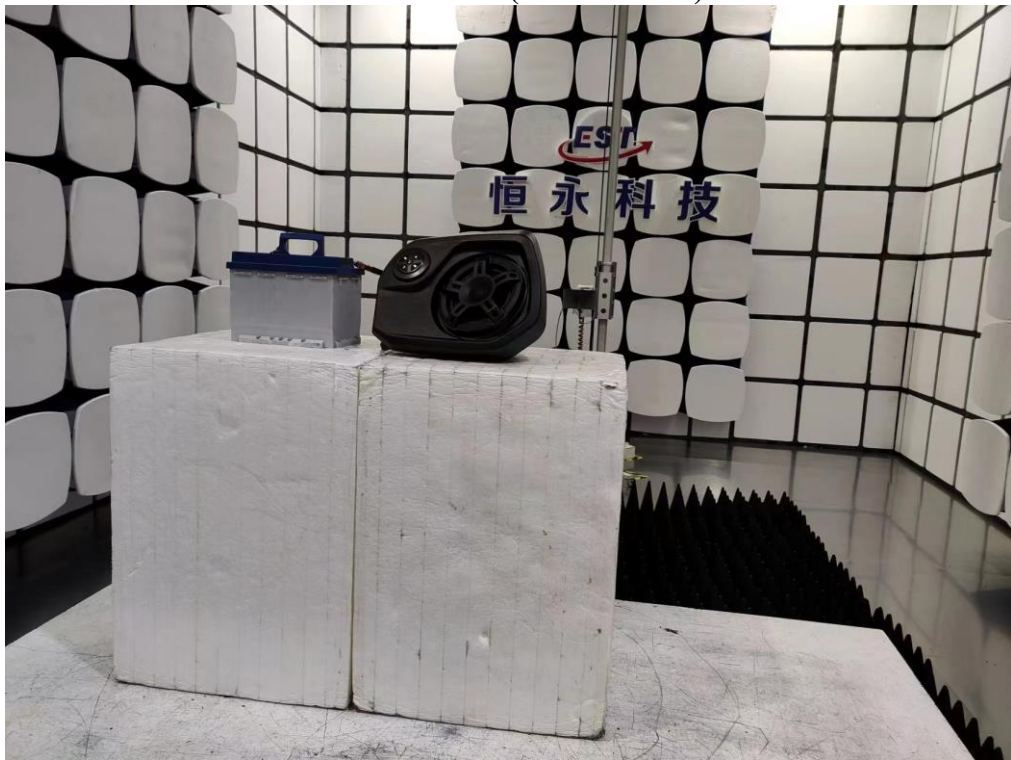


13. TEST SETUP PHOTO

Radiated Test (Below 1GHz)



Radiated Test (Above 1GHz)



14. EUT PHOTO

External Photos
M/N: 715005354



External Photos

M/N: 715005354



External Photos

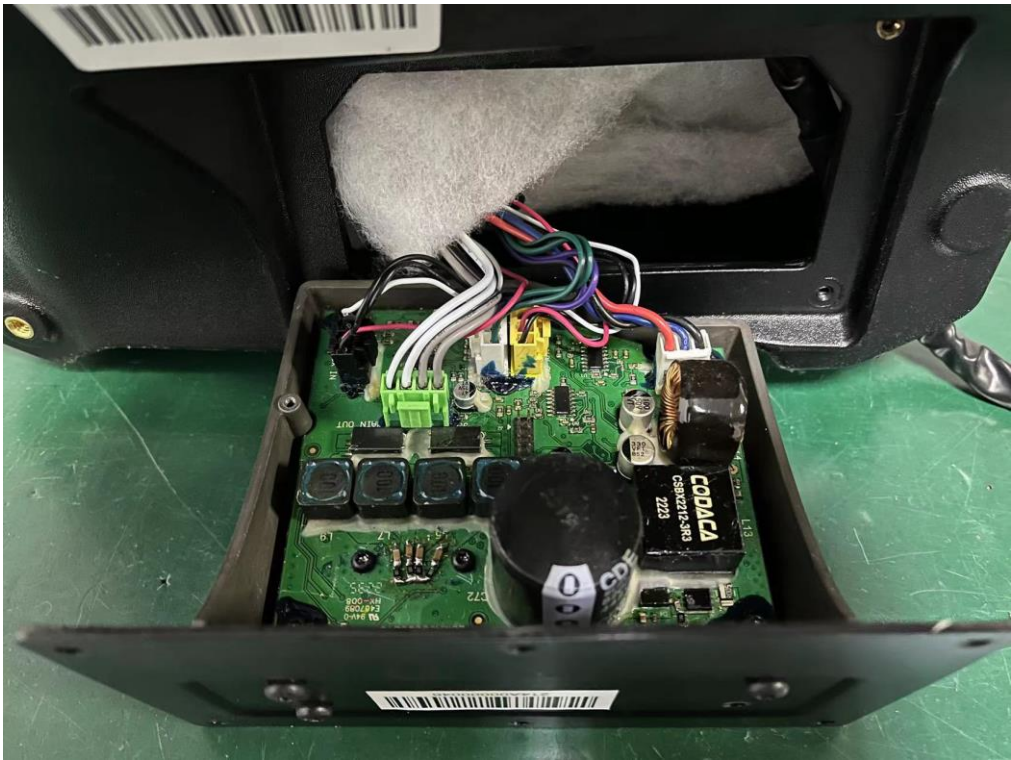
M/N: 715005354



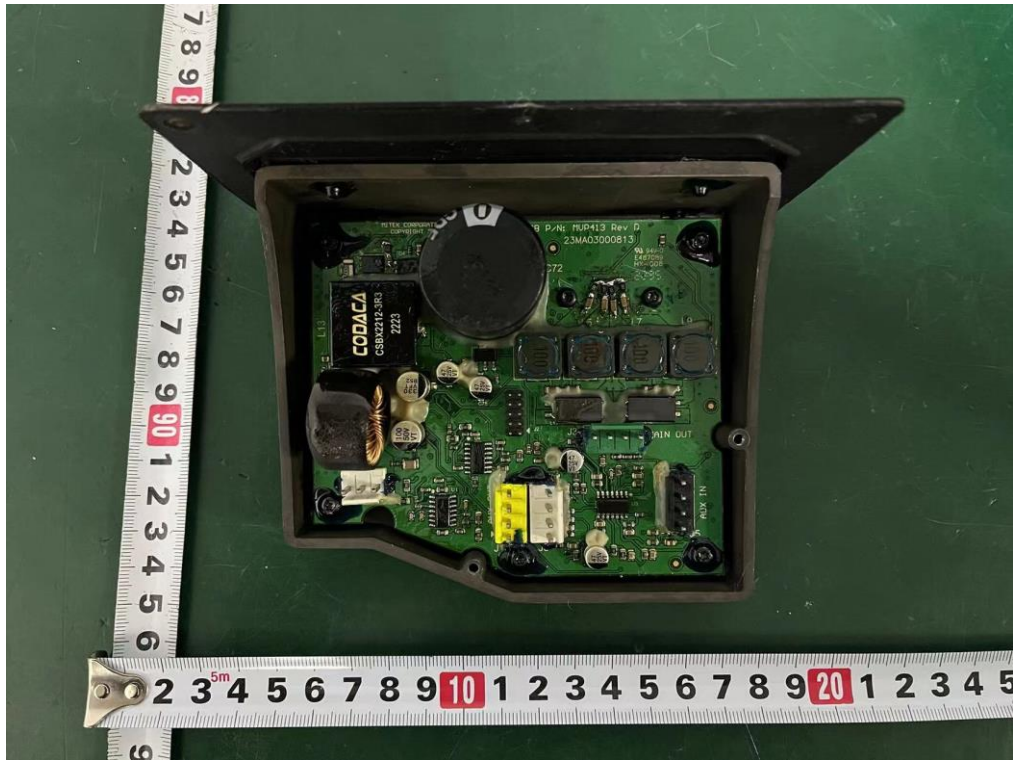
External Photos
M/N: 715005354



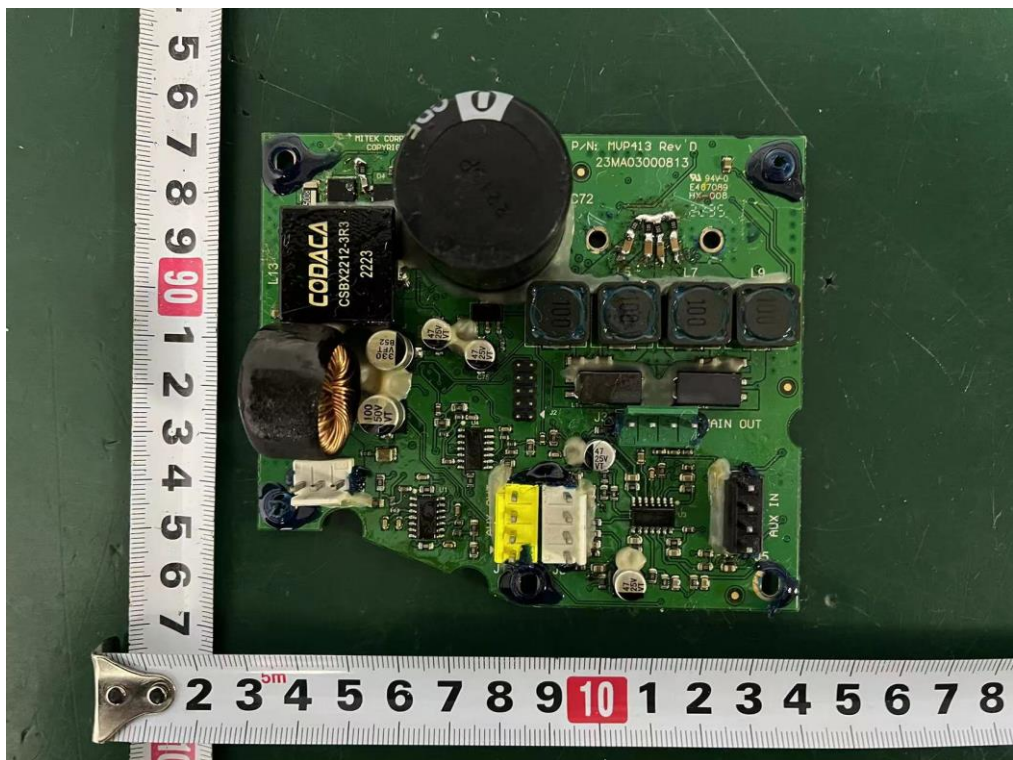
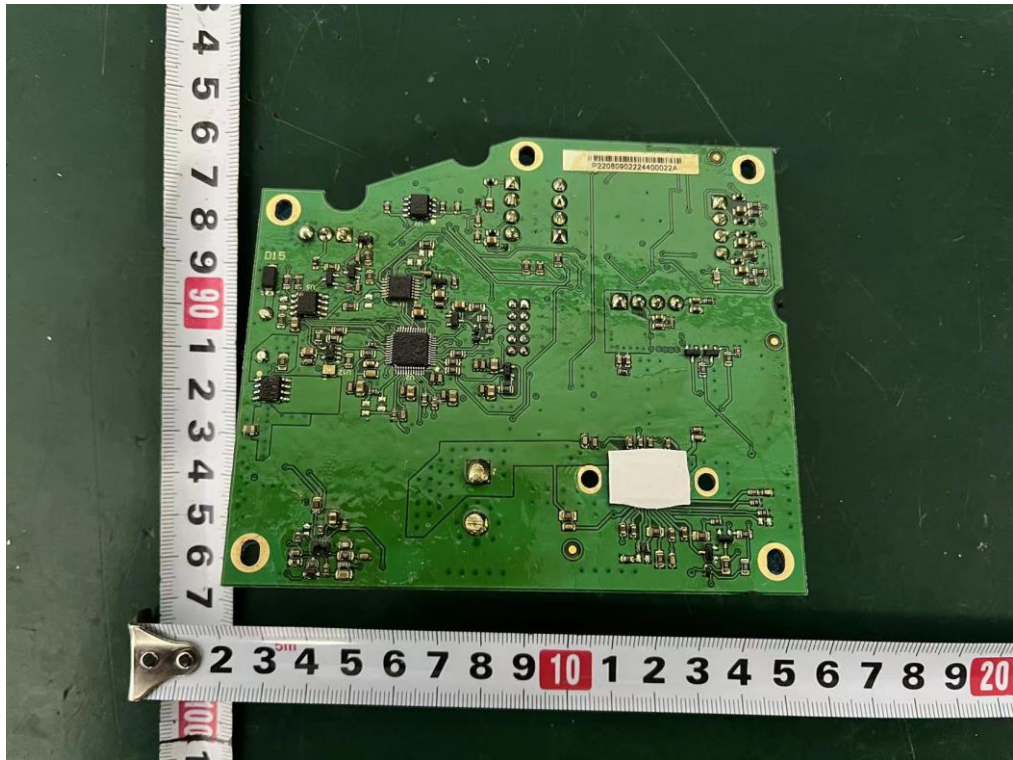
Internal Photos
M/N: 715005354



Internal Photos
M/N: 715005354



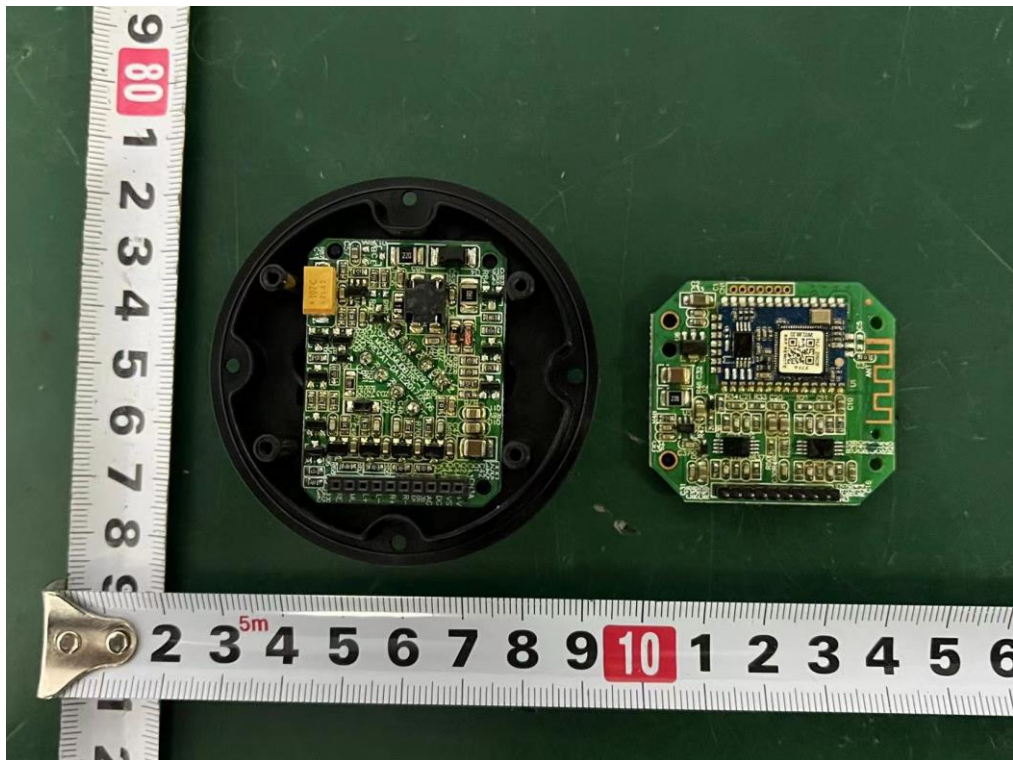
Internal Photos
M/N: 715005354



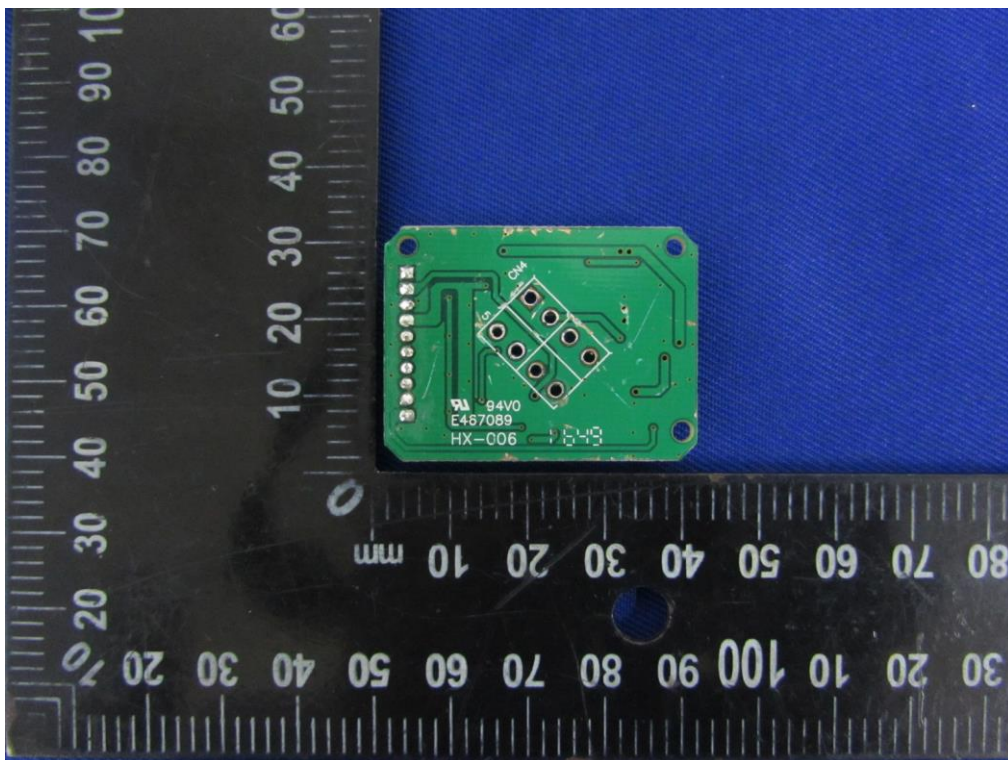
Internal Photos
M/N: 715005354



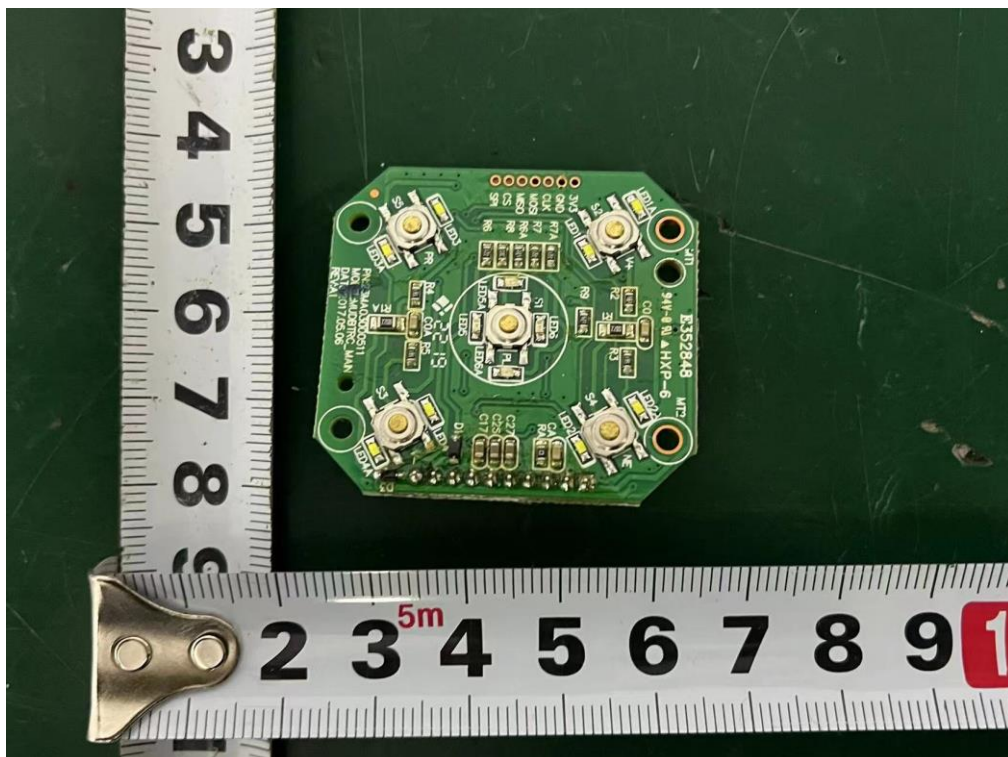
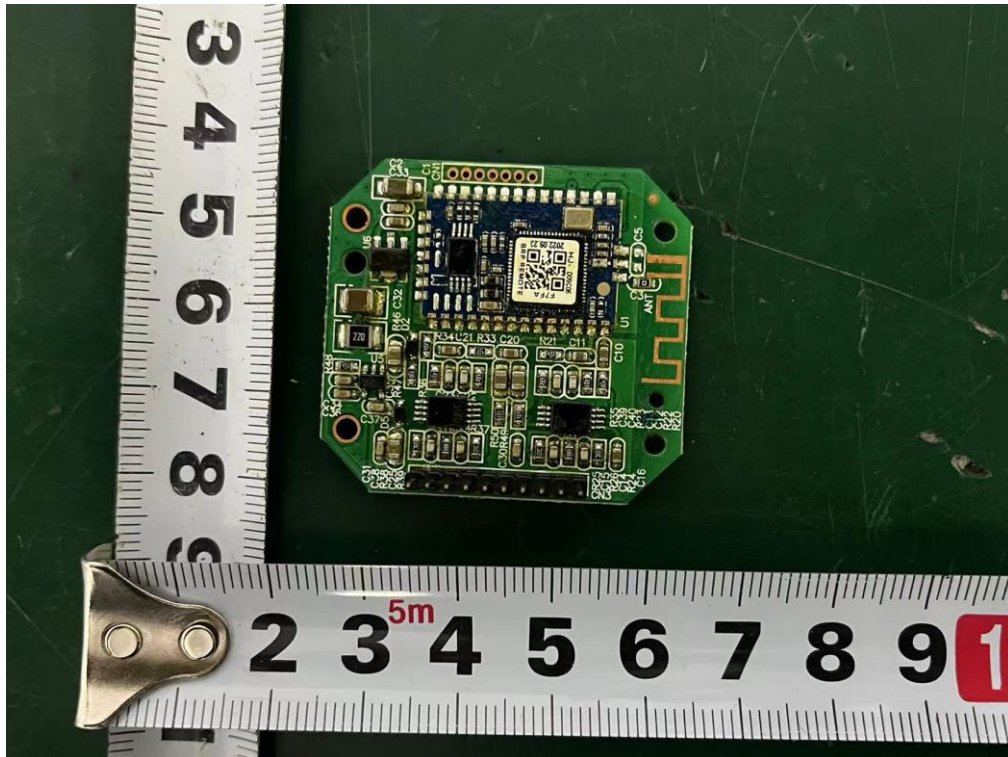
Internal Photos
M/N: 715005354



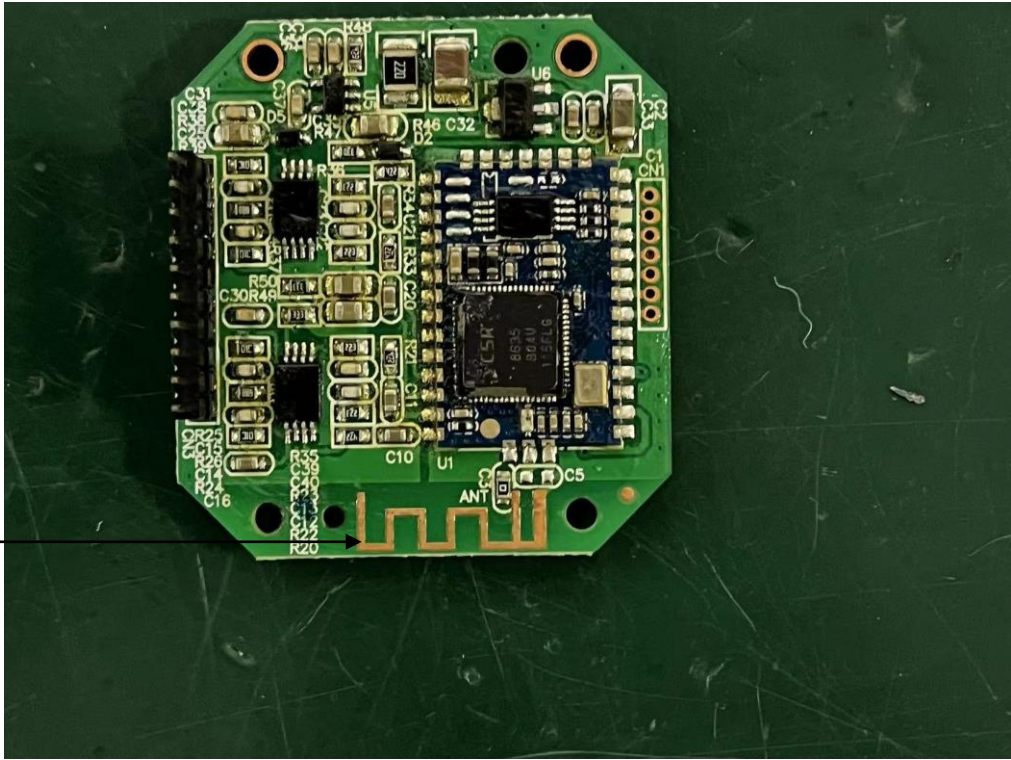
Internal Photos
M/N: 715005354



Internal Photos
M/N: 715005354



Internal Photos
M/N: 715005354



Bluetooth
Antenna



End of Test Report