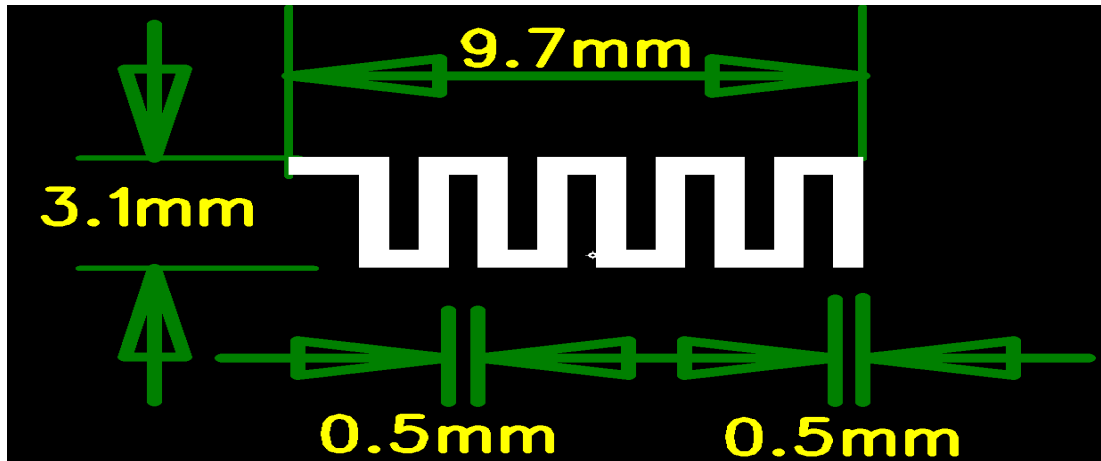


1. Antenna Description:

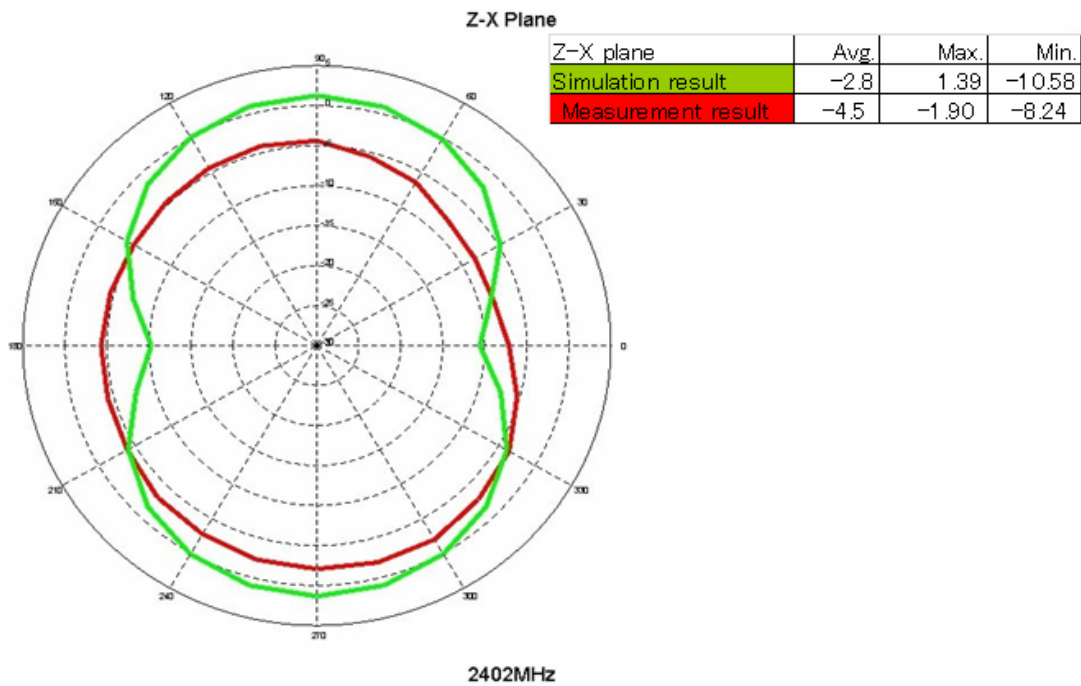
|                   |                 |
|-------------------|-----------------|
| Antenna plate     | PCB Antenna     |
| Antenna peak gain | 2.3 dBi         |
| Frequency range   | 2402MHz~2480MHz |
| Connect type      | Direct Connect  |

2. Picture of antenna



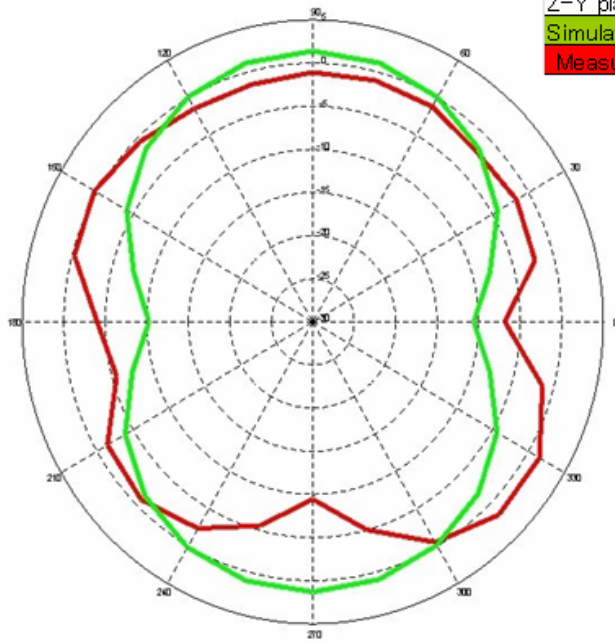
3. Antenna Radiation Pattern

Radiation pattern @2.402GHz



Z-Y Plane

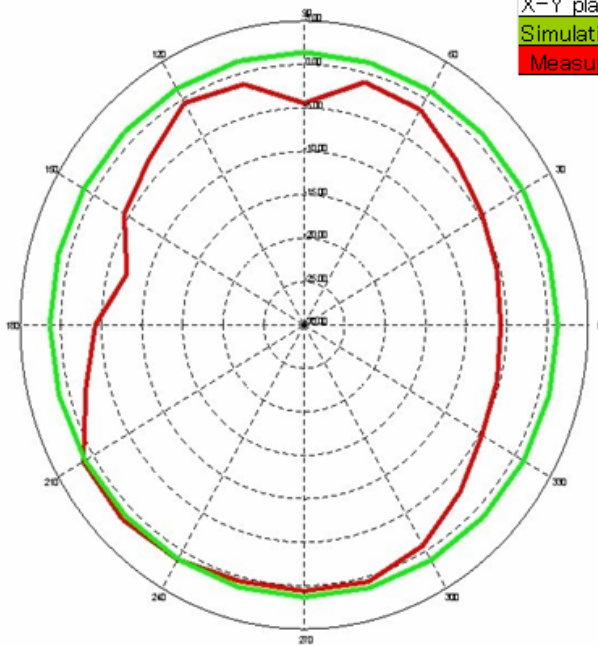
| Z-Y plane          | Avg. | Max. | Min.   |
|--------------------|------|------|--------|
| Simulation result  | -2.8 | 1.45 | -10.58 |
| Measurement result | -2.1 | 1.7  | -9.42  |



2402MHz

X-Y Plane

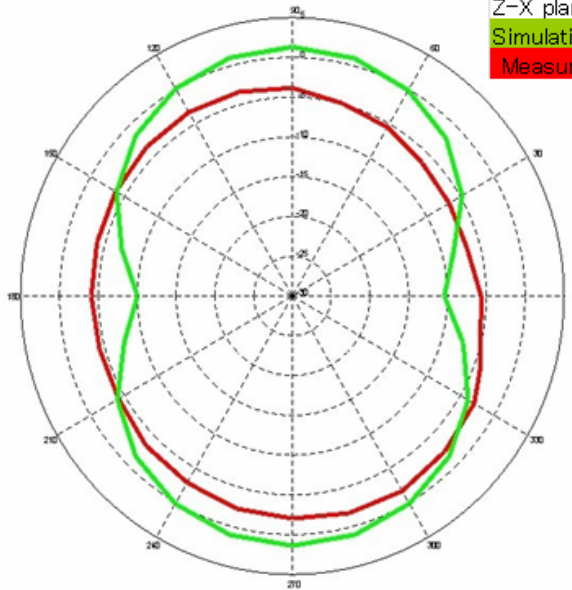
| X-Y plane          | Avg. | Max. | Min.  |
|--------------------|------|------|-------|
| Simulation result  | 1.3  | 1.5  | 1.15  |
| Measurement result | -2.3 | 1.7  | -7.34 |



2402MHz

# Radiation pattern @2.441GHz

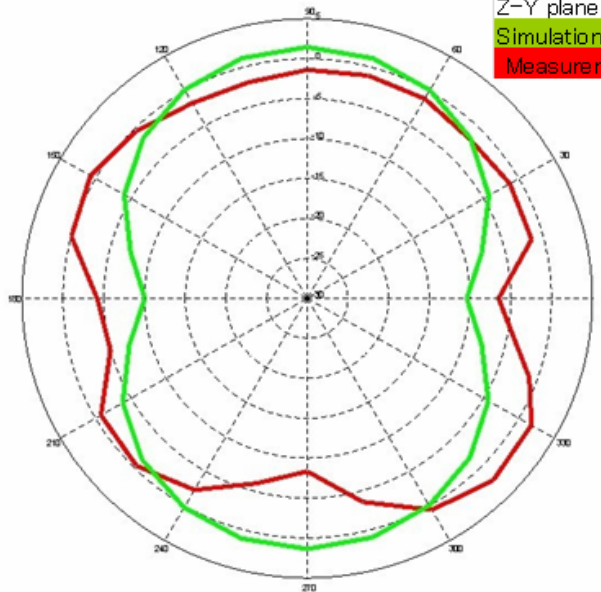
### Z-X Plane



| Z-X plane          | Avg. | Max.  | Min.   |
|--------------------|------|-------|--------|
| Simulation result  | -2.7 | 1.44  | -10.39 |
| Measurement result | -3.9 | -1.65 | -6.68  |

2441MHz

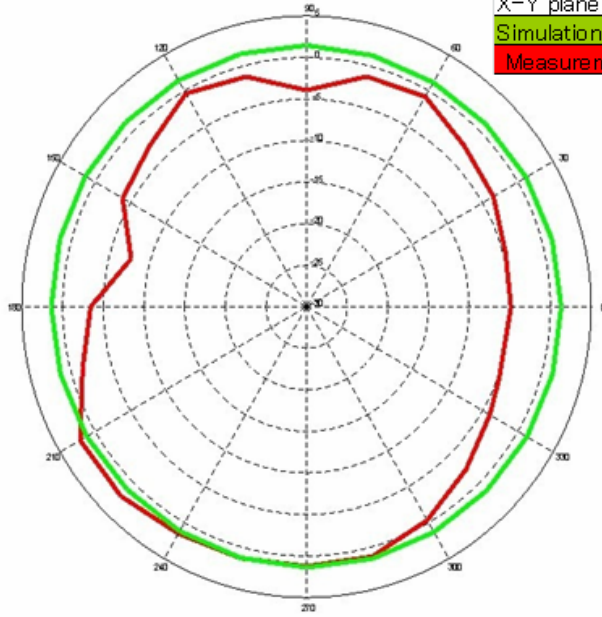
### Z-Y Plane



| Z-Y plane          | Avg. | Max. | Min.   |
|--------------------|------|------|--------|
| Simulation result  | -1.7 | 1.5  | -10.39 |
| Measurement result | -1.8 | 2.3  | -8.31  |

2441MHz

### X-Y Plane

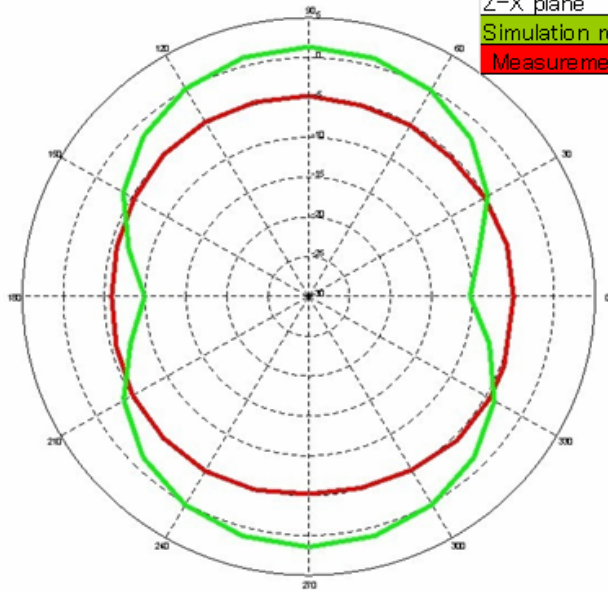


| X-Y plane          | Avg. | Max. | Min.  |
|--------------------|------|------|-------|
| Simulation result  | 1.4  | 1.55 | 1.17  |
| Measurement result | -1.8 | 2.3  | -7.64 |

2441MHz

### Radiation pattern @2.480GHz

### Z-X Plane

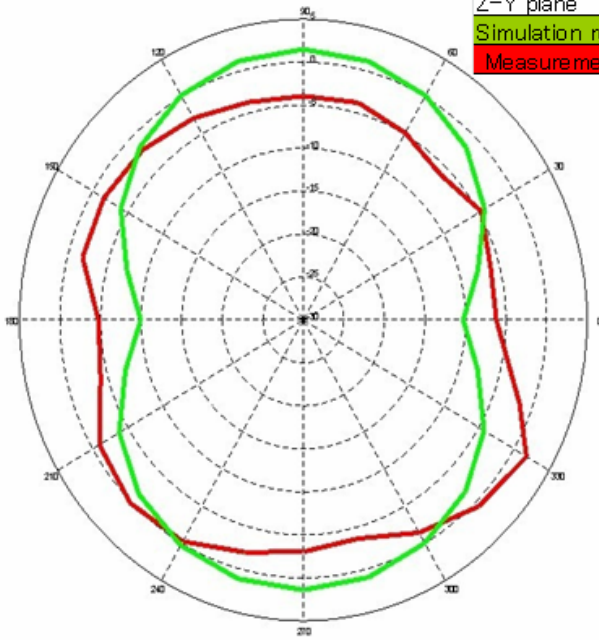


| Z-X plane          | Avg. | Max.  | Min.   |
|--------------------|------|-------|--------|
| Simulation result  | -2.7 | 1.5   | -10.25 |
| Measurement result | -5.0 | -4.35 | -5.88  |

2480MHz

### Z-Y Plane

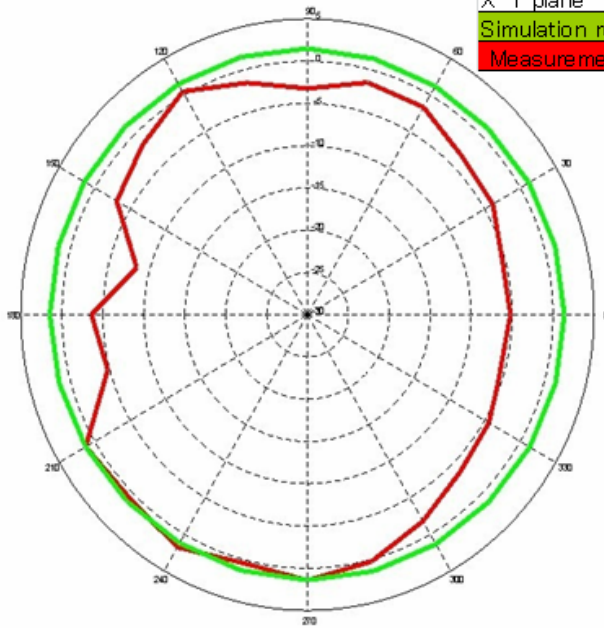
| Z-Y plane          | Avg. | Max. | Min.   |
|--------------------|------|------|--------|
| Simulation result  | -2.7 | 1.55 | -10.25 |
| Measurement result | -2.8 | 1.82 | -6.16  |



2480MHz

### X-Y Plane

| X-Y plane          | Avg. | Max. | Min.  |
|--------------------|------|------|-------|
| Simulation result  | 1.4  | 1.61 | 1.22  |
| Measurement result | -2.3 | 1.82 | -8.38 |



2480MHz